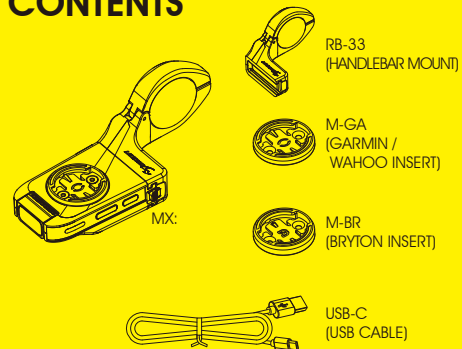


# MX: LINK MANUAL

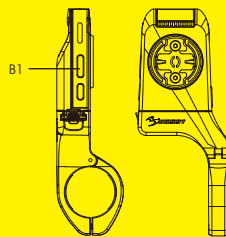
The light is locked for shipment, refer to OPERATION instruction to unlock. Read this manual carefully before using and keep for future reference. Visit [www.moon-sport.com](http://www.moon-sport.com) for manual updates.

## CONTENTS



Optional accessories:  
USB-C-RMS (Remote control)

## OPERATION

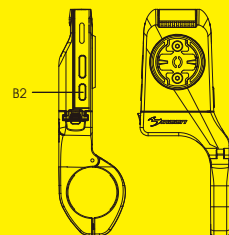


ON / OFF : Press **B1** 1s  
MODE SELECT : Click **B1**  
STEADY / FLASH : Press and hold **B1** 3s  
BOOST MODE : Double click **B1**  
LOCK/UNLOCK : 1. Power off  
2. Press **B1** 5s: Locked / Unlocked



\* Lock system: Lock the light to prevent accidentally turned on.  
\* Mode memory: The light resumes previous mode upon next usage.

## VARIABLE LUMEN SYSTEM



1. Select desired mode.
2. Press and hold **B2** to set lumen.
3. Release **B2** when reaching desired lumen.

\* Light flashes once when reaching the MAX or MIN lumen level.

\* Restore default setting: Press **B1** **B2** 5s

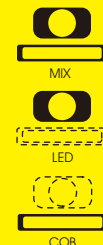


\* Mode memory: The light resumes previous VLS setting upon next usage.

## DUAL COLOUR BEAM

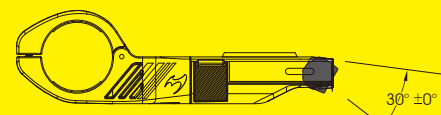
Dual Colour beam is designed for multi-weather conditions.

BEAM SELECT: Click **B2**



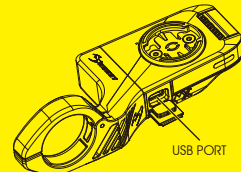
## ADJUSTABLE BEAM ANGLE

The beam angle is adjustable.



⚠ LED is hot in use! Only adjust angle when cool down

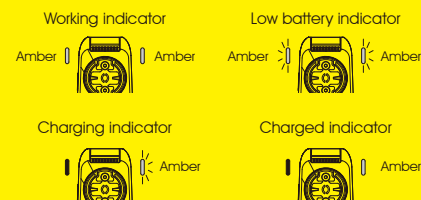
## CHARGING



1. Power off.
2. Plug USB cable to USB port.
3. Unplug after fully charged.

\* Do not charge over 5V.  
\* Keep away from flammable objects while charging.  
\* Recharge time: 2:45 hrs

### LOW BATTERY AND CHARGING INDICATOR



## WIRELESS CONNECTION



1. Restore default setting of headlight and taillight.  
Press **B1** **B2** 5s (\*May connect up to 5 taillights)
2. Wireless connection will be connected automatically.  
ON / OFF : Press power button of headlight or taillight to turn on/off all connected lights

### INDICATOR - CONNECTION



### INDICATOR - LOW BATTERY



⚠ For power saving purpose (to pause the wireless connecting signal), make sure to lock the light when not in use or after charging.

## RUNTIME

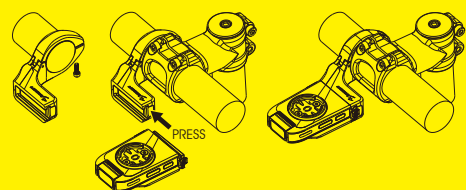
	BOOST	MODE1	MODE2	FLASH1	STEADY FLASH	DAY FLASH	SOS
COOL WHITE LED	400	250	100	100	300	400	-
WARM WHITE COB	400	250	100	100	300	400	-
DEFAULT LUMEN	400	250	100	100	300	400	-
H-MIN	1:45	2:15	5:00	19:00	9:00	20:00	16:00
VLS LUMEN	-	300-20	300-20	400-20	400-20	400-20	-
H-MIN	-	1:30-13:00	1:30-13:00	7:00-30:00	8:00-18:00	20:00-36:00	-

	BOOST	MODE1	MODE2	FLASH1	STEADY FLASH	DAY FLASH	SOS
COOL WHITE LED	400	300	100	100	150	300	-
WARM WHITE COB	400	300	100	100	150	300	-
DEFAULT LUMEN	400	300	100	100	150	300	-
H-MIN	1:45	2:15	4:30	17:00	15:00	24:00	25:00
VLS LUMEN	-	300-20	300-20	300-20	300-20	300-20	-
H-MIN	-	2:15-19:00	2:15-19:00	9:00-37:00	11:00-25:00	22:00-37:00	-

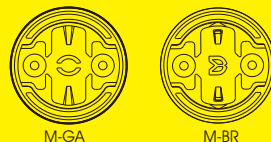
	BOOST	MODE1	MODE2	FLASH1	STEADY FLASH	DAY FLASH	SOS
COOL WHITE LED	400	250	100	100	300	400	-
WARM WHITE COB	400	250	100	100	300	400	-
DEFAULT LUMEN	400	250	100	100	300	400	-
H-MIN	1:45	2:15	5:00	19:00	9:00	20:00	16:00
VLS LUMEN	-	300-20	300-20	400-20	400-20	400-20	-
H-MIN	-	1:30-13:00	1:30-13:00	7:00-30:00	8:00-18:00	20:00-36:00	-

⚠ Use the SOS sign for real emergency only!

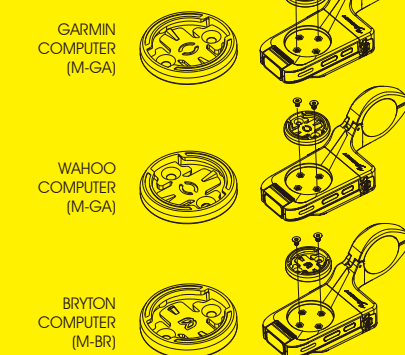
## MOUNTING



## COMPUTER INSTALLATION



### INSTALLATION :



### Warning

- \* The setup procedures are serving for a bike only.
- \* Any improper setup or installation which does not follow original design intentions may result in damage of bike and/or personal injury.
- \* Check and torque all bolts periodically.

## WARNING

Understand country lighting laws and regulations before use.  
Do not shine light directly into eyes.  
Do not mount near wireless computer.  
Do not blind the oncoming vehicles. Always adjust the angle downward.  
Do not submerge the light into water.  
Keep light in cool and dry place when storing.  
Fully recharge the light at least every 3 months during storage.

## WARRANTY

MOON lights are covered by a ONE YEAR LIMITED WARRANTY while MOON batteries are covered by 120 days warranty from the date of purchase. This warranty covers the defects in material and workmanship only with proof of purchase. Please contact original dealer for warranty service. For lights bought on MOON website, please contact [cs@moon-sport.com](mailto:cs@moon-sport.com) for help.

### ONLINE WARRANTY REGISTRATION

Visit [www.moon-sport.com](http://www.moon-sport.com) for online warranty registration.