



Kogan SmarterHome™ 3MP Outdoor Battery Powered Pan and Tilt Security Camera

(With Spotlight)

KASMCM4GPTA

Components	3
Overview	4
Installation	6
Operation	14
Connect to SmarterHome™ App	17
Google Home	20
Amazon Alexa	23
Specifications	27

Components

Lay all components out on a clean floor and ensure all parts are included. If any pieces are missing, check all packaging thoroughly, then contact **help.Kogan.com** for assistance.



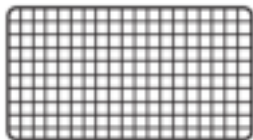
Camera



Mounting Bracket



Wall Mounting Hardware



Solar Panel



Solar Panel Mounting Kit

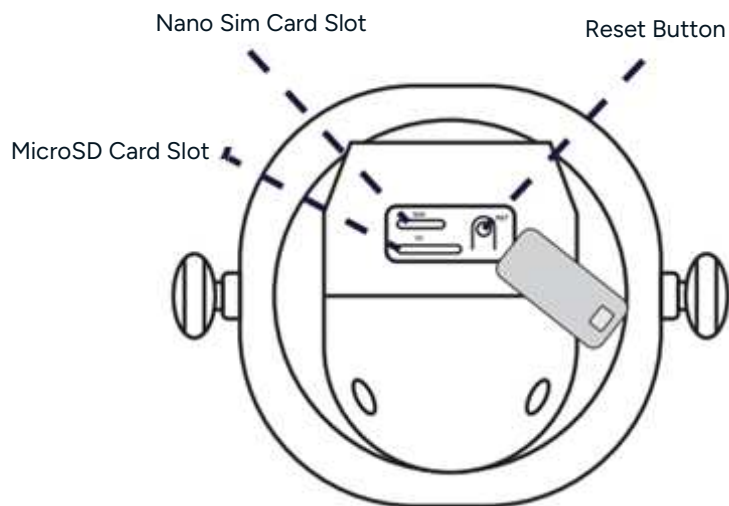
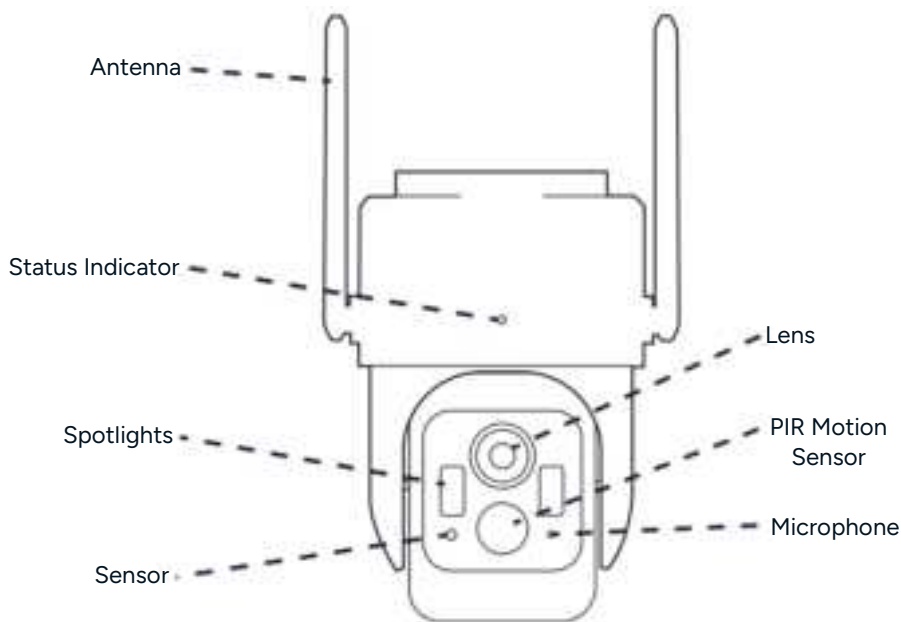


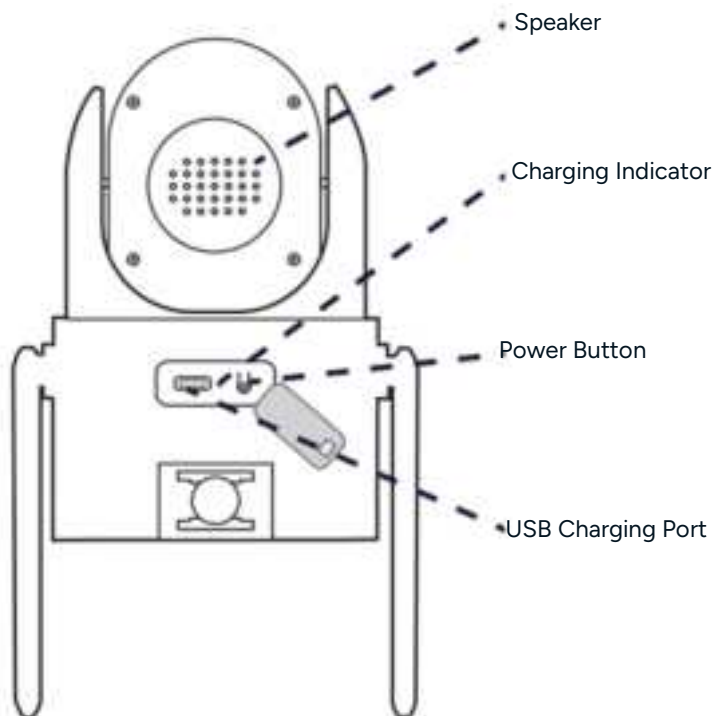
USB Cable



User Guide

Overview





Indicators

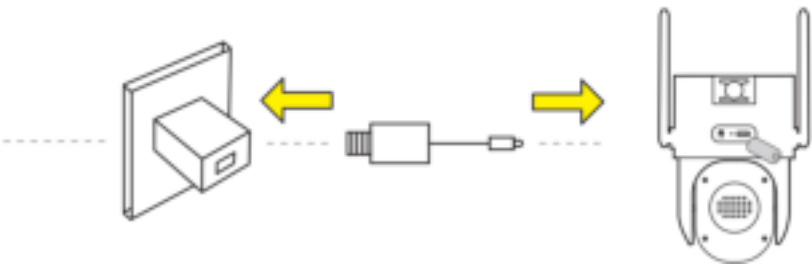
Status Indicator	Description
Slowly flashing red	Ready to connect (pairing mode)
Rapidly flashing red	Disconnected from the Wi-Fi network
Slowly flashing blue	Connected to the router successfully
Flashing blue and red alternately	SIM card is not inserted

Charging Indicator	Description
Solid red	Battery is charging
Solid blue	Charging completed
Flashing indicator light	Charging failure, disconnect and reconnect charging cable.

Installation

Charging the Camera

Before mounting the camera, ensure it is fully charged. Use the supplied USB charging cable and connect it to a 5V 1.5A power adapter (not included). Allow the camera to charge completely before first use.

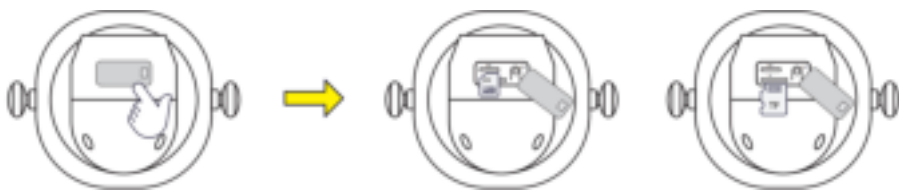


Charging Indicator	Description
Solid red	Battery is charging
Solid blue	Charging completed
Flashing indicator light	Charging failure, disconnect and reconnect charging cable.

Note:
The camera will continue to charge via the solar panel during normal use.

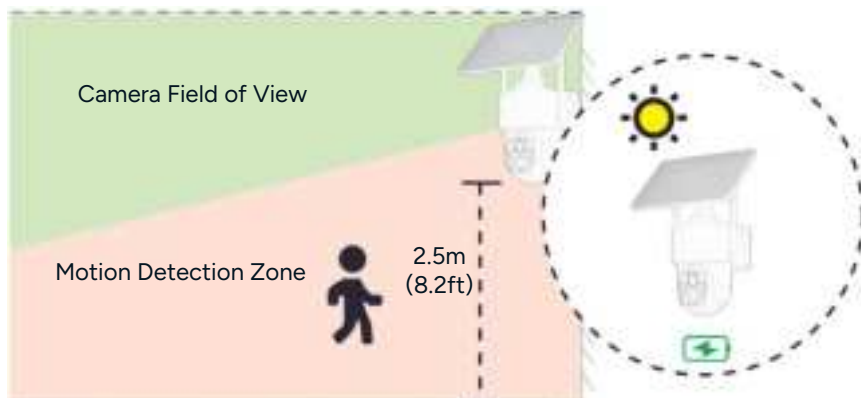
Insert SIM Card and microSD Card

Rotate the camera and open the waterproof cover, then insert a SIM card and a microSD card (not provided).



Select a Location

- The camera should be mounted to a wall. Select a location that provides the desired camera view and allows the solar panel to receive direct sunlight.
- For optimal performance, it is recommended to mount the camera approximately 2.5m (8.2ft) above the ground.

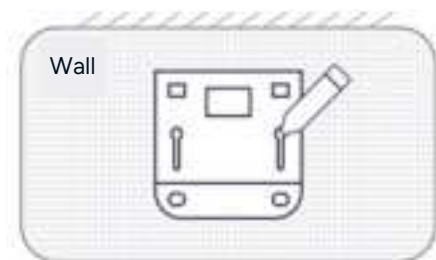


Mount the Camera

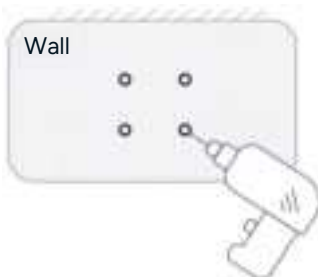
There are 2 methods to mount the camera. You can choose to install the camera on the wall or ceiling.

Wall Mounting

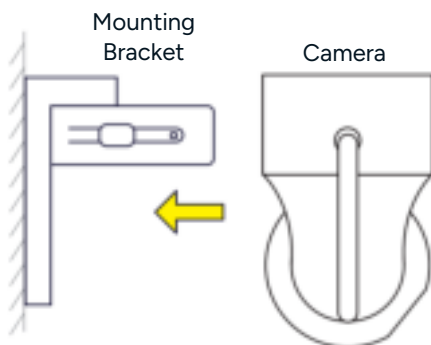
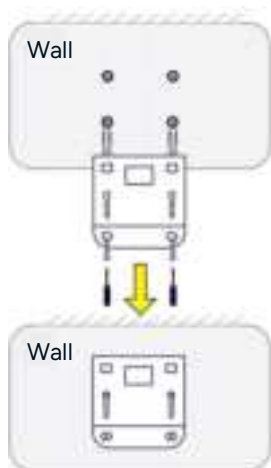
1. Use the Mounting Bracket as a template to mark the 4 mounting points on the wall.



2. Drill 4 holes in the marked spots.

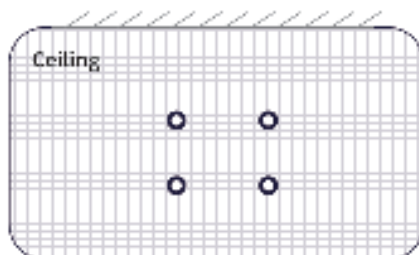
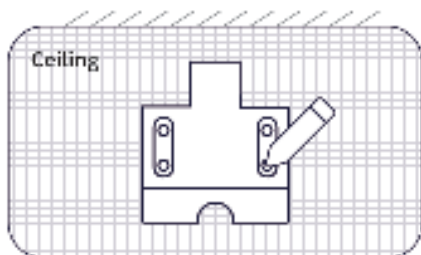


3. If mounting into concrete or masonry, insert the supplied wall anchors into the holes. Then secure the Mounting Bracket to the wall with using the supplied screws. If mounting to wood, wall anchors are not required.
4. Attach the Camera to the Mounting Bracket.

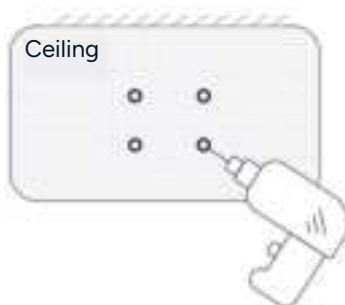


Ceiling Mounting

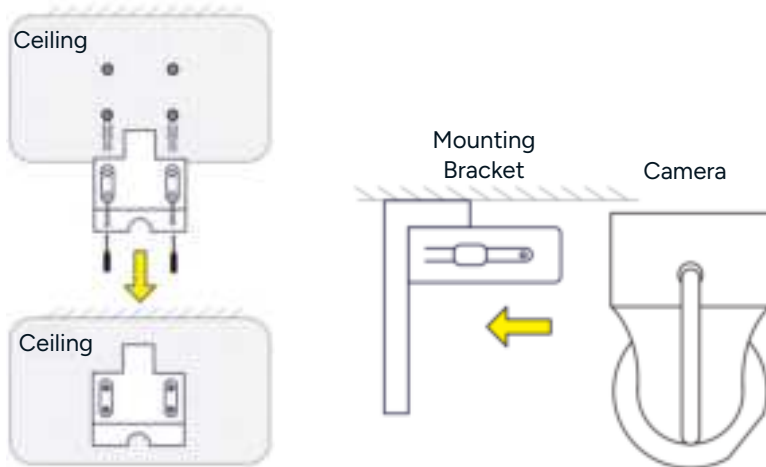
1. Use the Mounting Bracket as a template to mark the 4 mounting points on the ceiling.



2. Drill 4 holes in the marked spots.



3. If mounting into concrete or masonry, insert the supplied wall anchors into the holes. Then secure the Mounting Bracket to the wall with using the supplied screws. If mounting to wood, wall anchors are not required.
4. Attach the Camera to the Mounting Bracket.

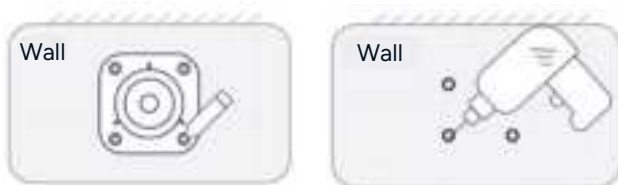


Mounting the Solar Panel

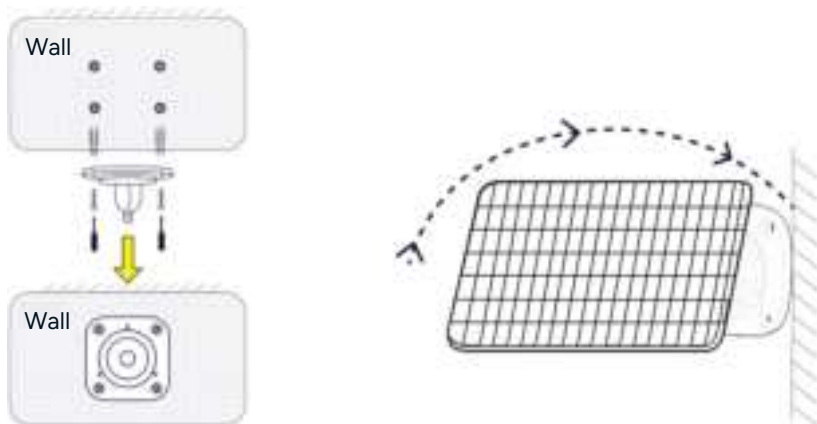
There are two methods to mount the solar panel. You can choose to install the solar panel on the wall or directly on the camera.

Wall Mounting

1. Use the Solar Panel Bracket as a template to mark the 4 mounting points on the wall.
2. Drill 4 holes in the marked spots.



3. If mounting into concrete or masonry, insert the supplied wall anchors into the holes. Then secure the Solar Panel Bracket to the wall with using the supplied screws. If mounting to wood, wall anchors are not required.
4. Align the Solar Panel with the Solar Panel Bracket, then rotate the solar panel clockwise to attach it.

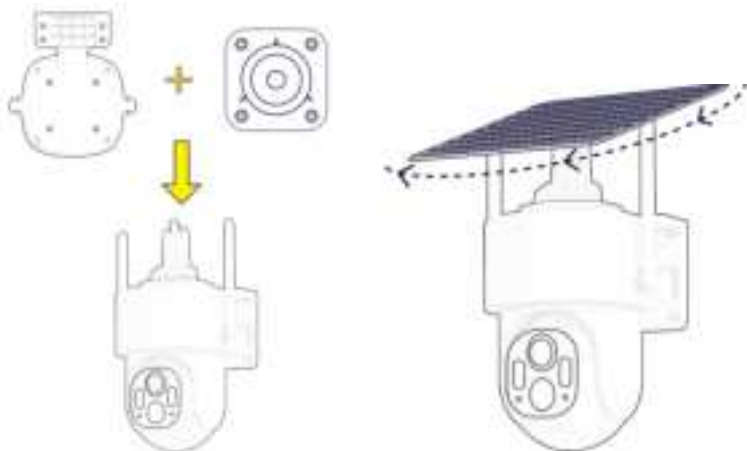


5. Angle the Solar Panel on the Solar Panel Bracket to receive the largest amount of sunlight. A 30° tilt is recommended.

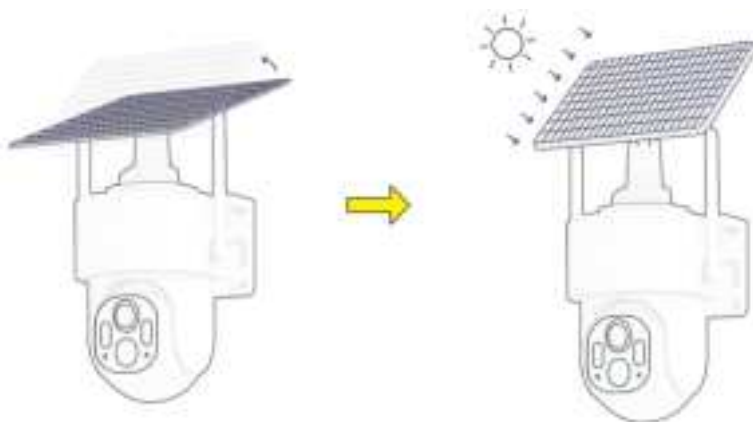


Mounting the Solar Panel to the Camera

1. Use the supplied screws to attach the Solar Panel Bracket to the top of the Camera.
2. Align the Solar Panel with the Solar Panel Bracket, then rotate the solar panel clockwise to attach it.

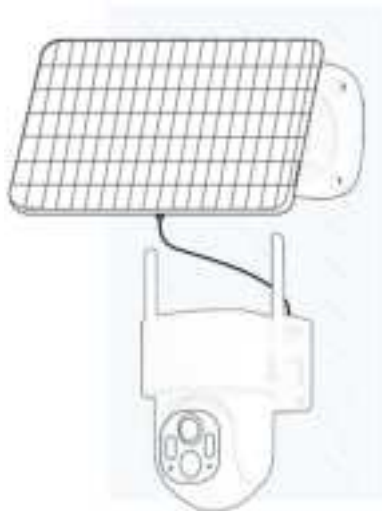


3. Angle the Solar Panel on the Solar Panel Bracket to receive the largest amount of sunlight. A 30° tilt is recommended.



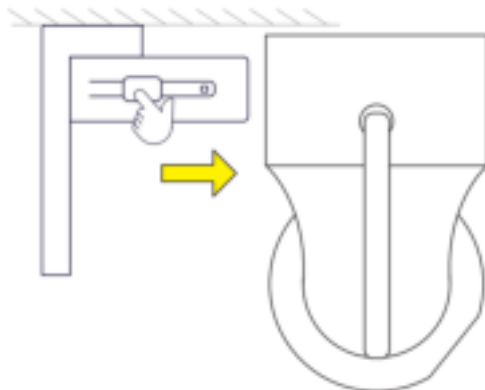
Connecting the Solar Panel to the Camera

After mounting the Camer and Solar Panel, connect the USB-C connector from the Solar Panel into the USB Charging Port on the rear of the Camera.



Removing the Camera

Press and hold the button on the Mounting Bracket while pulling the Camera away from the Mounting Bracket.



Operation

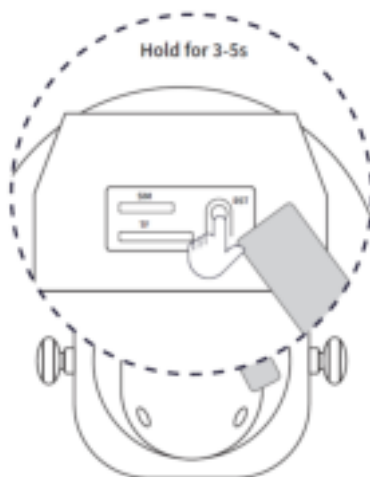
Powering the Camera On/Off

- To turn the camera on, press and hold the 'Power' button until you hear the start-up tone. The camera's status indicator will slowly flash blue.
- Press and hold the 'Power' button to turn the camera off. The status indicator will turn off.

Resetting the Camera / Pairing Mode

When the camera is first turned on, the status indicator will be slowly flashing blue, indicating that it is ready to be paired with the SmarterHome App.

If your router or Wi-Fi network settings have changed or you need to place the camera in pairing mode again you can manually set the device in pairing mode by pressing and holding the 'Reset' button until the voice prompt 'Reset successful' and the status indicator is slowly flashing blue.



App Interface

Live view interface, click '...' to access the camera settings and additional functions.



Two-way audio

You can see and hear the visitors from the camera in your SmarterHome™ app.

Full Colour Vision

The use of white light ensures that pictures and videos captured during motion detection are presented in vivid colour, enhancing overall visibility for a more detailed and clear vision.

PIR Motion Detection

- Built-in motion sensor detects movement, and the camera will send push notifications and app alerts.
- When someone passes by, an alarm will be triggered and sent to phone.

Alerts

When the alarm is triggered at night, the camera will activate both sound and light notifications.

Low Battery

- A low battery warning is triggered when the battery level reaches 20%. A shutdown warning is triggered when it reaches 5%.
- If the camera is not receiving enough sunlight to charge, you may need to fully charge it via USB before resuming operation. Consider adjusting the solar panel to receive more direct sunlight.

Spotlight Control Modes

The spotlight can be controlled through the SmarterHome app. Two lighting modes are available:

- **Manual Control:** Turn the spotlight on manually via the app and adjust the brightness as needed.
- **Night Vision Mode:** The spotlight will automatically turn on when motion is detected in low light conditions.

Record

Use an SD card to keep recording for every moment.

Day & Night

Never miss a moment, even in complete darkness, with powerful night-vision technology.



Note:

The PIR motion sensor will occasionally false trigger depending on the camera's environment. This is completely normal and not an indication of improper operation or product fault.

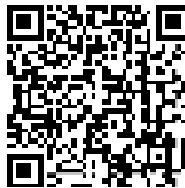
Connect to the SmarterHome™ App

Install the App

Download the Kogan SmarterHome™ app from the Apple App Store (iOS) or the Google Play Store (Android).



App Store (iOS)



Play Store (Android)

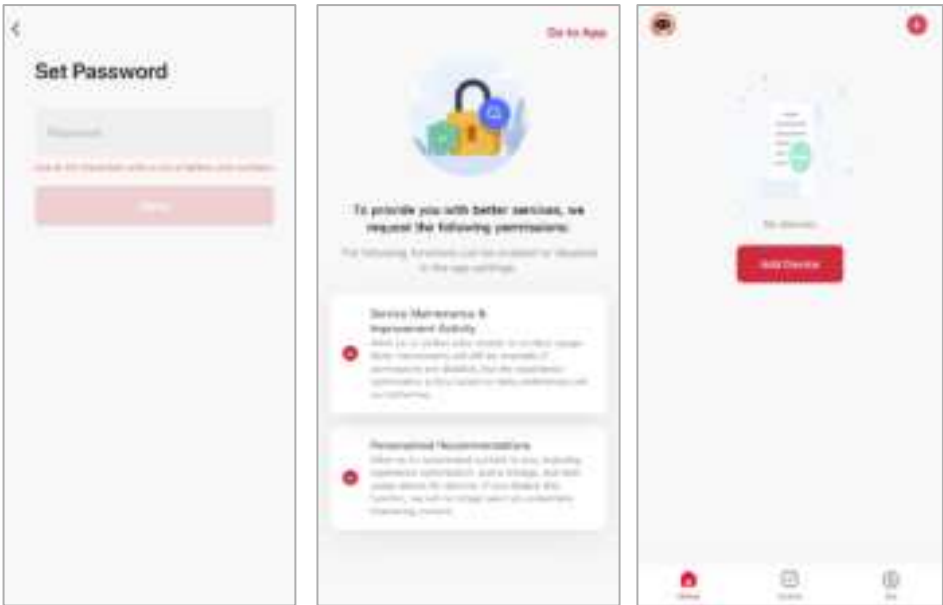


Log In or Sign Up

1. If you already have a SmarterHome account, tap 'Log In'. To register a new account, tap 'Sign Up'.
2. The app will automatically recognise your country. If needed, you can manually select your country from the drop down menu. Enter your email address, agree to the Privacy Polics and User Agreement, and tap 'Get Verification Code' to continue.
3. A 6-digit code will be sent to the submitted email address. Enter the code before the one-minute timer expires.



- 4. Enter a password that uses 6-20 characters with a mix of letters and numbers and tap 'Done'.
- 5. Enable the permissions and tap 'Go to App'.



Set the Device in Pairing Mode

When the device is first turned on, it may automatically enter pairing mode (the status indicator is slowly flashing blue).

If not automatically in pairing mode when powered on, you can manually set the device in pairing mode by pressing and holding the 'Reset' button until the voice prompt 'Reset successful' and the status indicator is slowly flashing blue.

Add the Device to the App

1. Open the SmarterHome™ app.
2. Tap the '+' icon in the top right corner of the screen and then tap 'Add Device'.
3. Tap 'Add' when the device appears. Alternatively, select the product type from the list of options in the app (Security > Cameras).
4. Follow the prompts to add your device to the app.

Notes:

- This device connects through a 4G LTE network it is not compatible with either 2.4Ghz or 5Ghz Wi-Fi networks.
- Ensure a SIM card has been inserted before proceeding with pairing.

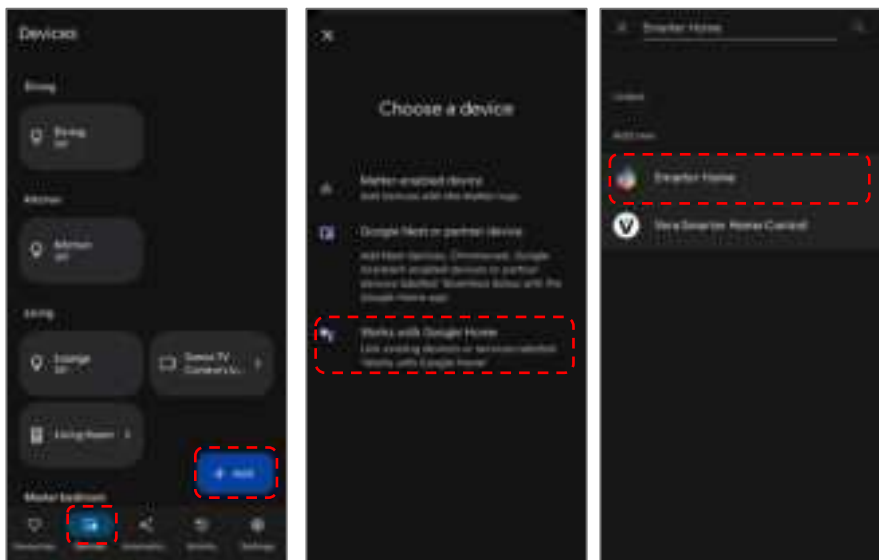
Connectivity Support

Scan the QR code below or go to <https://help.kogan.com/s/article/Kogan-SmarterHome-App-Connectivity-Support> and follow the pairing instructions for EZ mode.

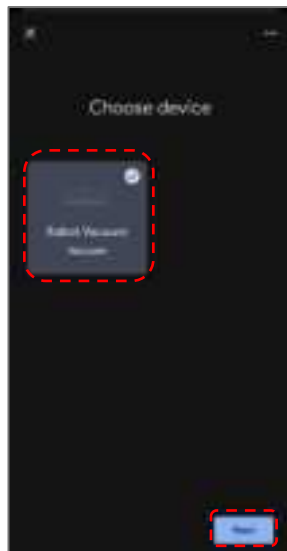
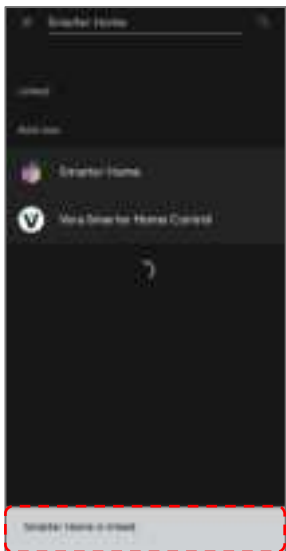


Google Home

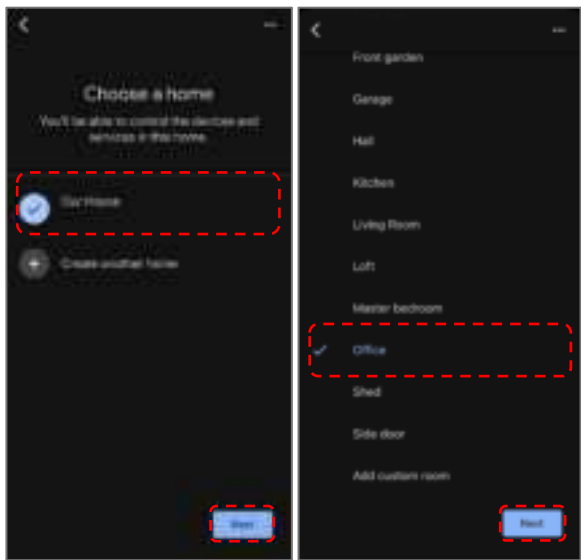
1. Ensure you are logged into the Kogan SmarterHome™ app.
2. Open the Google Home app.
3. Go to the devices tab and tap the '+ Add' button in the lower right corner.
4. Tap 'Works with Google Home'.
5. Search for 'Smarter Home' in the search bar and select 'Smarter Home' from the results.



6. Tap the 'Agree and link' button.
7. Search for 'Smarter Home' in the search bar and select 'Smarter Home' from the results.
8. Once linked, a 'Smarter Home is linked' pop-up will appear at the bottom of the screen.
9. Tap your device and then tap the 'Next' button.

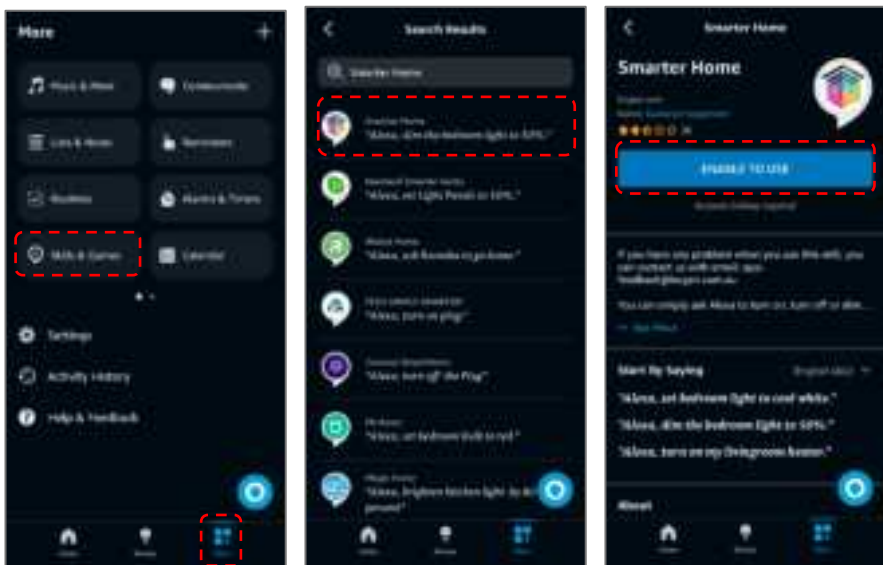


- 10. Select the home you wish to add the device to and tap the 'Next' button.
- 11. Select the room your device is in and tap the 'Next' button.

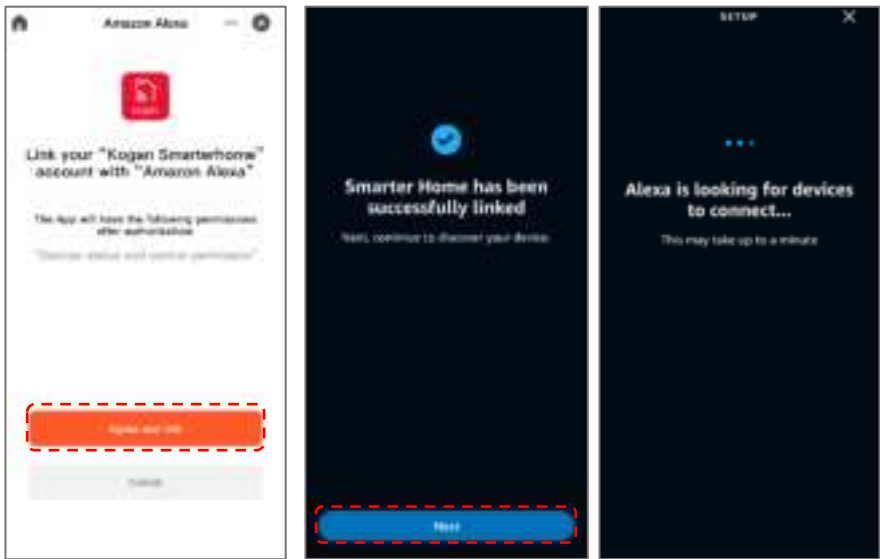


Amazon Alexa

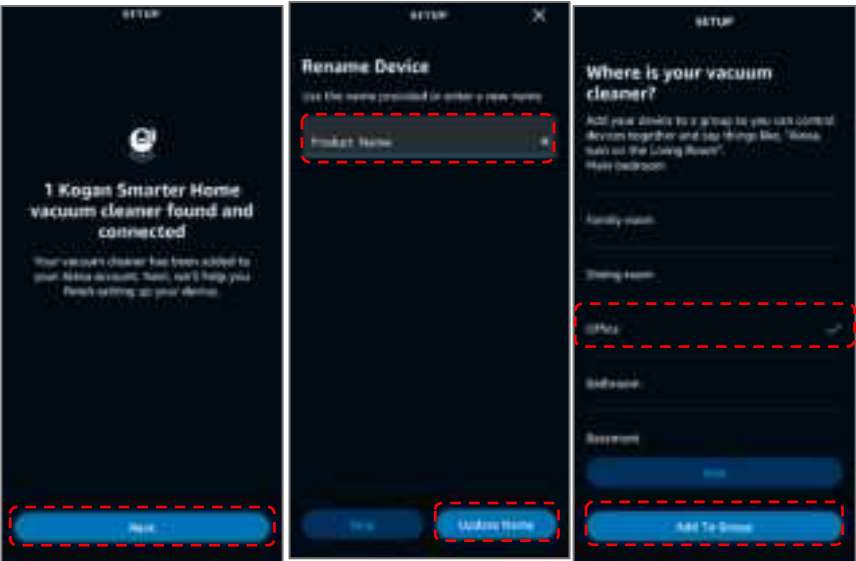
1. Ensure you are logged into the Kogan SmarterHome™ app.
2. Open the Amazon Alexa app.
3. Go to the 'More' tab and tap 'Skills & Games'.
4. Search for 'Smarter Home' in the search bar and select 'Smarter Home' from the results.
5. Tap the 'ENABLE TO USE' button.



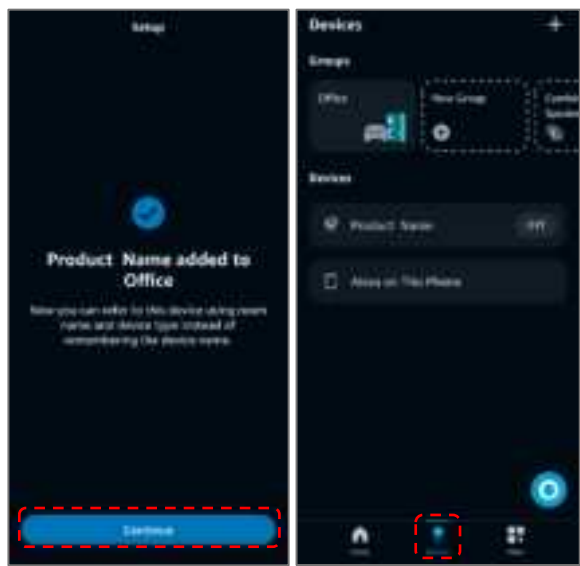
- 6. Tap the 'Agree and link' button.
- 7. Once linked, tap 'Next'. Alexa will search for any compatible devices.



- 8. Once your device has been found, tap 'Next'.
- 9. Rename the device to your desired name and tap 'Update Name'.
- 10. Select the room your device is in and tap 'Add To Group'



- 11. Once the device has been successfully added to your desired room, tap 'Continue'.
- 12. You can view and manage your device from the 'Devices' tab.



Specifications

Effective Pixels	2304 x 1296
Clarity Resolution	3MP
FOV(H/V/D)	104.4°/57.8°/123°
Lens	3.08mm @F2.0
IR LED	10m
Floodlights	10m
Audio	MIC/Speaker
PIR	8m (120°)
Weatherproof	IP65
Pan/Tilt	Pan: 0~355° Tilt: 0~90°
Storage	TF Card (Max 256G)
Wireless	LTE CAT1
Network Security	FDD-LTE
Battery Capacity	10000mAh
Item Weight	550g
Product Dimensions (L x W x H)	92 x 92 x 140mm
Charging Power	Type-C, DC5V/1.5A
Mounting Type	Wall Mount
Working Temp	- 20°C~+50°C
Charging Temp Solar	0°C~45°C

Need more information?

We hope that this user guide has given you the assistance needed for a simple set-up.

For the most up-to-date guide for your product, as well as any additional assistance you may require, head online to **help.Kogan.com**.

