

正面 宽65mm 高110mm

User Manual

LED Strip Light



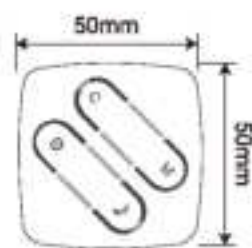
Product Feature

1. Support WiFi 2.4GHz 802.11 b/g/n wireless network.
2. Support remote local control through 20/ 30/ 40/ 50 networks.
3. Added device can be shared with family members.

Product Parameter

Voltage: DC 5-24V
Max Current: 3A
Max Power: 72W
Controller size: L80 * W80 * H18mm
Humidity: 80% RH
Working temperature: -10°C ~ 45°C (14°F ~ 113°F)

Product Dimension

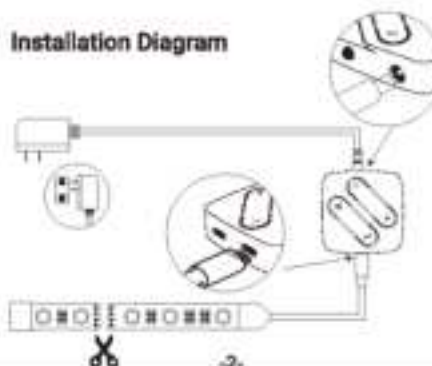


-1-

What's in Package



Installation Diagram



-2-

Add Device

- (1) Download Smart Life APP. Search by name or scan the QR code below to download the App on your smart phone.



- (2) Register with your mobile number or email. A verification code will be sent to you.

(3) Add Device

- A. Power on the strip light and open Smart Life App.
- B. Make sure GPS, WiFi and Bluetooth are enabled.
- C. Tap '+' on the right corner to start adding device.
- D. Searching nearby device automatically and wait for seconds.
- E. After device found, choose 2.4G Wi-Fi and input password as this will register the device to the cloud service.

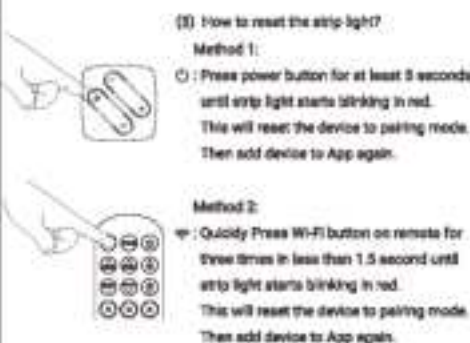


-3-



Choose 2.4G WiFi
Initializing Device
Device added

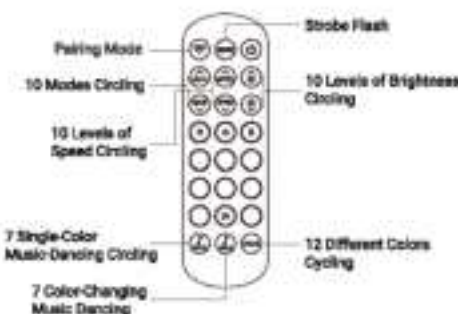
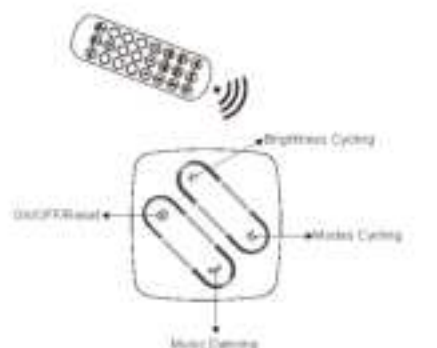
- (4) You need to reset the device in the following situations.
A. When you can't connect the device to your App.
B. When someone else wants to add the product to their phone.
C. When you change your Wi-Fi status, such as changing Wi-Fi name or password or replace your router.



-4-

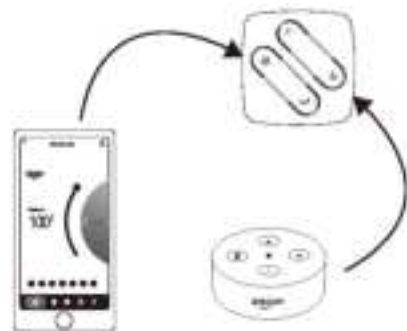
反面 宽65mm 高110mm

(6) Controller Box / Remote Control



-5-

(7) APP Control / Voice Control



Link Smart Life Account to Echo

- (1) Open Alexa APP; tap on the menu on upper left corner.



-6-

(2) Go to Skills



- (3) Search for 'Smart Life' skill in the search bar.



- (5) Enable button



-7-

- (6) Enter your Smart Life account information and tap on 'Link Now' to link your account to your Amazon account.



- (7) Your Amazon Echo is connected to your Smart Life system.



(8) Two ways to discover devices

- i. Discover devices on the Alexa APP: 'Home' → 'Smart Home' → 'Discover Devices'.
- ii. Voice control to discover devices, you could say 'Alexa discover devices'.

-8-

Control Devices by Voice Commands

Now you can control your smart devices through Echo. Speak to Echo like following

- (1) Alexa, turn on/off strip light.
- (2) Alexa, set strip light to 50 percent.
- (3) Alexa, brighten/increase strip light.
- (4) Alexa, dim/decrease strip light.

Link Smart Life Account to Google Home

Make sure you have successfully set up Google Home. 1. Click '+' on the menu of Google Home App home page, then click 'Set up device'. Select 'Works with Google'.

2. Find 'Smart Life' in the list. Select your region, input your Smart Life account and password, then click 'Link Now'. After you assign rooms for devices, your devices will be listed in the Home Control page.

3. Control Your Smart Devices through Google Home. Now you can control your smart devices through Google Home. Take bedroom light as the example, the supported voice commands are as below:

- OK Google, turn on/off bedroom light.
- OK Google, set bedroom light to 50 percent.
- OK Google, brighten bedroom light.
- OK Google, dim bedroom light.
- OK Google, set bedroom light to red.

-9-

FCC WARNING

THIS DEVICE COMPLIES WITH PART 15 OF THE FCC RULES. OPERATION IS SUBJECT TO THE FOLLOWING TWO CONDITIONS:

- (1) THIS DEVICE MAY NOT CAUSE HARMFUL INTERFERENCE, AND**
- (2) THIS DEVICE MUST ACCEPT ANY INTERFERENCE RECEIVED, INCLUDING INTERFERENCE THAT MAY CAUSE UNDESIRABLE OPERATION.**

NOTE 1: THIS EQUIPMENT HAS BEEN TESTED AND FOUND TO COMPLY WITH THE LIMITS FOR A CLASS B DIGITAL DEVICE, PURSUANT TO PART 15 OF THE FCC RULES. THESE LIMITS ARE DESIGNED TO PROVIDE REASONABLE PROTECTION AGAINST HARMFUL INTERFERENCE IN A RESIDENTIAL INSTALLATION. THIS EQUIPMENT GENERATES, USES AND CAN RADIATE RADIO FREQUENCY ENERGY AND, IF NOT INSTALLED AND USED IN ACCORDANCE WITH THE INSTRUCTIONS, MAY CAUSE HARMFUL INTERFERENCE TO RADIO COMMUNICATIONS. HOWEVER, THERE IS NO GUARANTEE THAT INTERFERENCE WILL NOT OCCUR IN A PARTICULAR INSTALLATION. IF THIS EQUIPMENT DOES CAUSE HARMFUL INTERFERENCE TO RADIO OR TELEVISION RECEPTION, WHICH CAN BE DETERMINED BY TURNING THE EQUIPMENT OFF AND ON, THE USER IS ENCOURAGED TO TRY TO CORRECT THE INTERFERENCE BY ONE OR MORE OF THE FOLLOWING MEASURES:

- REORIENT OR RELOCATE THE RECEIVING ANTENNA.**
- INCREASE THE SEPARATION BETWEEN THE EQUIPMENT AND RECEIVER.**
- CONNECT THE EQUIPMENT INTO AN OUTLET ON A CIRCUIT DIFFERENT FROM THAT TO WHICH THE RECEIVER IS CONNECTED.**
- CONSULT THE DEALER OR AN EXPERIENCED RADIO/TV TECHNICIAN FOR HELP.**

NOTE 2: ANY CHANGES OR MODIFICATIONS TO THIS UNIT NOT EXPRESSLY APPROVED BY THE PARTY RESPONSIBLE FOR COMPLIANCE COULD VOID THE USER'S AUTHORITY TO OPERATE THE EQUIPMENT.

RF EXPOSURE STATEMENT

TO MAINTAIN COMPLIANCE WITH FCC'S RF EXPOSURE GUIDELINES, THIS EQUIPMENT SHOULD BE INSTALLED AND OPERATED WITH MINIMUM 20CM BETWEEN THE RADIATOR AND YOUR BODY. THIS DEVICE AND ITS ANTENNA(S) MUST NOT BE CO-LOCATED OR OPERATION IN CONJUNCTION WITH ANY OTHER ANTENNA OR TRANSMITTER.