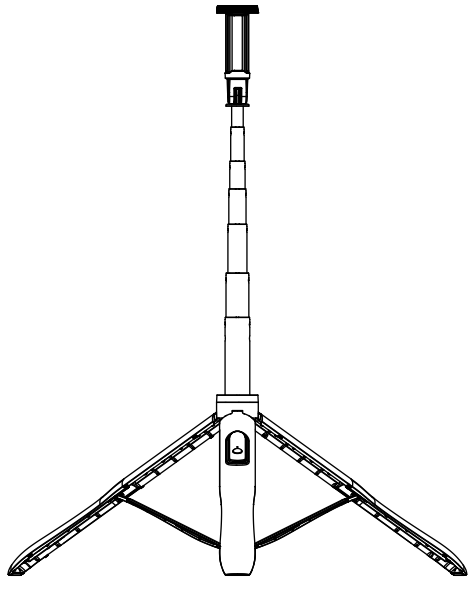
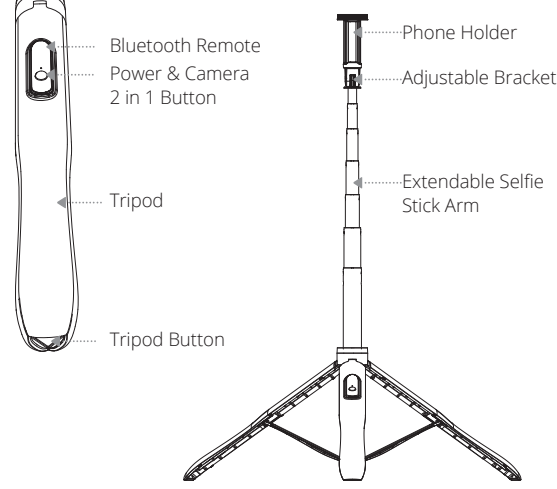


User Manual

1.3m Selfie Stick Tripod with Bluetooth Remote



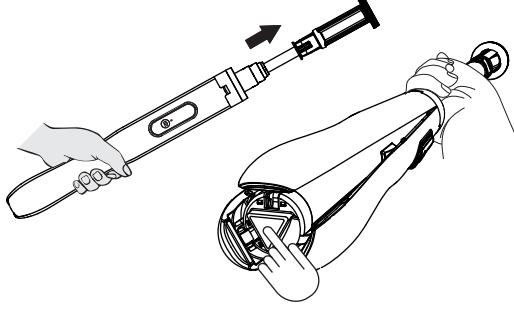
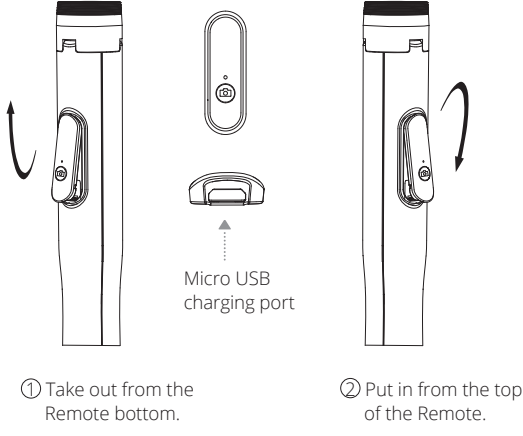
PRODUCT LINE GRAPH



Product Parameters

Weight	Approx. 330g
Remote distance	<10m(33ft)
Ambient temperature	-10℃~50℃
Remote battery capacity	50 mAh
Input	5V/110 mAh
Compatible devices	IOS 7.0 and later/ Android 5.0 and later
Device width	Approx. 2.36" - 3.74"
Extended length w/o tripod activated	Approx. 12.40" - 54.15"
Extended length with tripod activated	Approx. 12.21" - 53.54"
Folded size	Approx. 12.01" * Φ1.57"
Remote button lifespan	>15,000 times

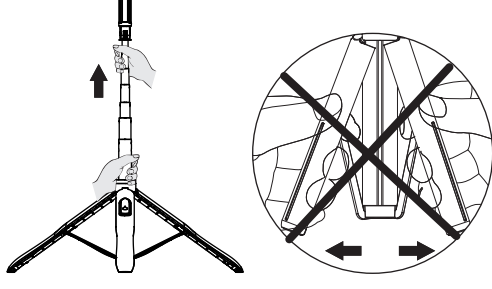
How to take out / put in wireless Bluetooth remote



Step 2: Now pull the whole stick arm out, and the tripod will open automatically.
ATTENTION:
1. Please fully pull out the stick arm so that the tripod can be fully opened. Otherwise, tripod is not fully opened and will not be stable.

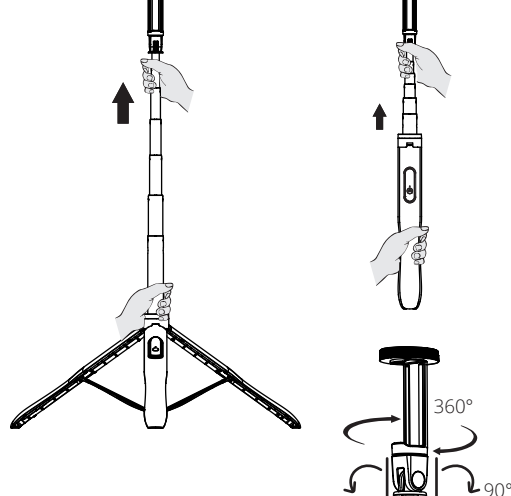
How to use

Step 1: First pull out the phone holder, then press the tripod button on bottom to unlock the 3 legs slightly.
ATTENTION:
When you press the bottom button, please avoid to hold the top of tripod.



Step3: Put the tripod on flat surface, then adjust the extendable stick arm for suitable height. If you do not need to use as tripod, just pull out the stick arm out and adjust height to use it.

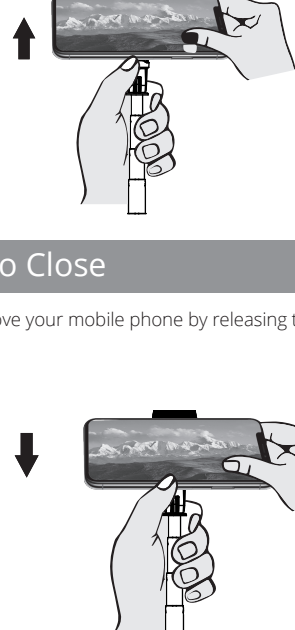
Step 4: Widthwise set your phone inside the smartphone holder by releasing the top cap.
Note: please avoid stuck the button of your phone.



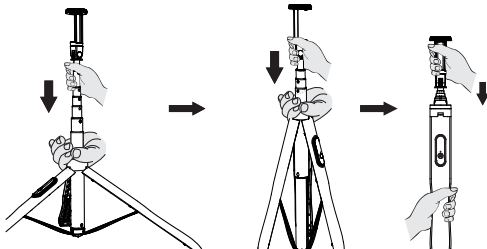
360° horizontally rotation of phone holder;
180° vertically rotation of adjustable bracket.

How to Close

Step 1: Remove your mobile phone by releasing the top cap.



Step 2: Hold the bottom part of stick, then pull back the extendable stick one by one; finally push the phone holder back.
Note: If you open the tripod, the tripod will close automatically when push back the aluminum alloy telescopic arm. Manual operation is prohibited.



WARNING:
Do not push the 3 legs to close!!! It will break legs!!!

NOTE:

1. Open your built-in camera in your phone and press the power & camera 2 in 1 button of once for taking a photo.
2. The wireless Bluetooth remote will connect directly after switch on if it is already connected with the phone Bluetooth in last time.
3. The Bluetooth will automatically disconnect when the distance is greater than or equal to 10 meters.
4. Turn the Bluetooth off in your phone and the wireless Bluetooth remote will standby.
5. How to disconnect with your phone: Go to your phone Bluetooth setting and disconnect "ATUMTEK" in paired devices.
6. Unavailable to use to control the built-in camera app in your phone when the wireless Bluetooth remote in charging.

Bluetooth Connect Instruction

No.	Status	LED Light Indicator
1	Switch On	Green Light Flashing
	Long press camera button for 2 seconds, to open remote.	
2	Switch Off	LED Light OFF
	Long press camera button for 3 seconds, remote light is OFF.	
3	Standby	LED Light OFF
	Remote will standby after 10 minutes without operation; Press the button for once to active, then green light will flash, please reconnect with phone again.	
4	Low Power	Red Light Flashing
5	Charging	Red Light ON
6	Fully Charged	LED Light OFF
7	Connected	Green Light ON
8	Connectionless	Green Light Flashing

*6 It takes about 2 hours to fully charge the remote.

First long press the camera button for 2 seconds, then connect with "ATUMTEK" when green light is flashing, finally press once to take a picture or record video.

If phone could not connect, clean phone Bluetooth connection first, then try again; some Android phones use volume button to control camera, so if you still could not use remote, please choose "take a picture" or "take a video" on camera setting part. Or please contact with seller directly to get support.

FCC Statement

Changes or modifications not expressly approved by the party responsible for compliance could void the user's authority to operate the equipment.

This device complies with part 15 of the FCC Rules. Operation is subject to the following two conditions: (1) This device may not cause harmful interference, and (2) this device must accept any interference that may cause undesired operation.

Note: This equipment has been tested and found to comply with the limits for a Class B digital device, pursuant to Part 15 of the FCC Rules. These limits are designed to provide reasonable protection against harmful interference in a residential installation. This equipment generates, uses, and can radiate radio frequency energy, and if not installed and used in accordance with the instructions, may cause harmful interference to radio communications. However, there is no guarantee that interference will not occur in a particular installation. If this equipment does cause harmful interference to radio or television reception, which can be determined by turning the equipment off and on, the user is encouraged to try to correct the interference by one or more of the following measures:

- Reorient or relocate the receiving antenna.
- Increase the separation between the equipment and receiver.
- Connect the equipment into an outlet on a circuit different from that to which the receiver is connected.
- Consult the dealer or an experienced radio/TV technician for help.