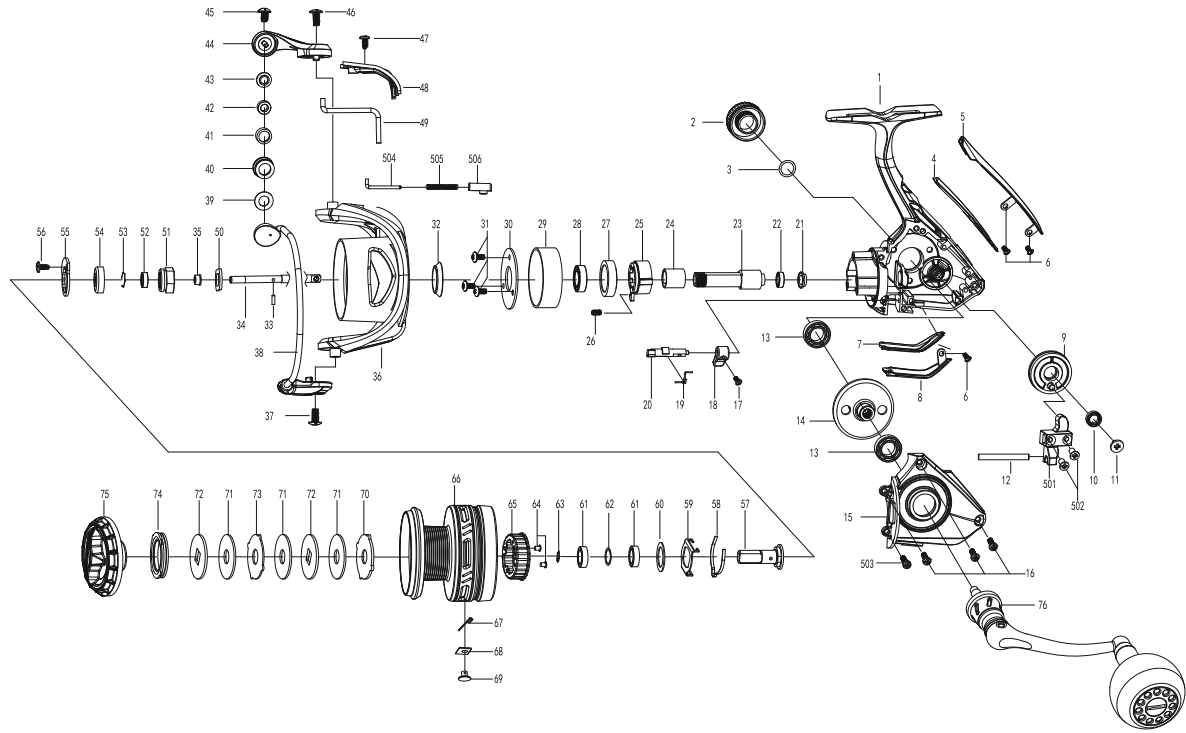
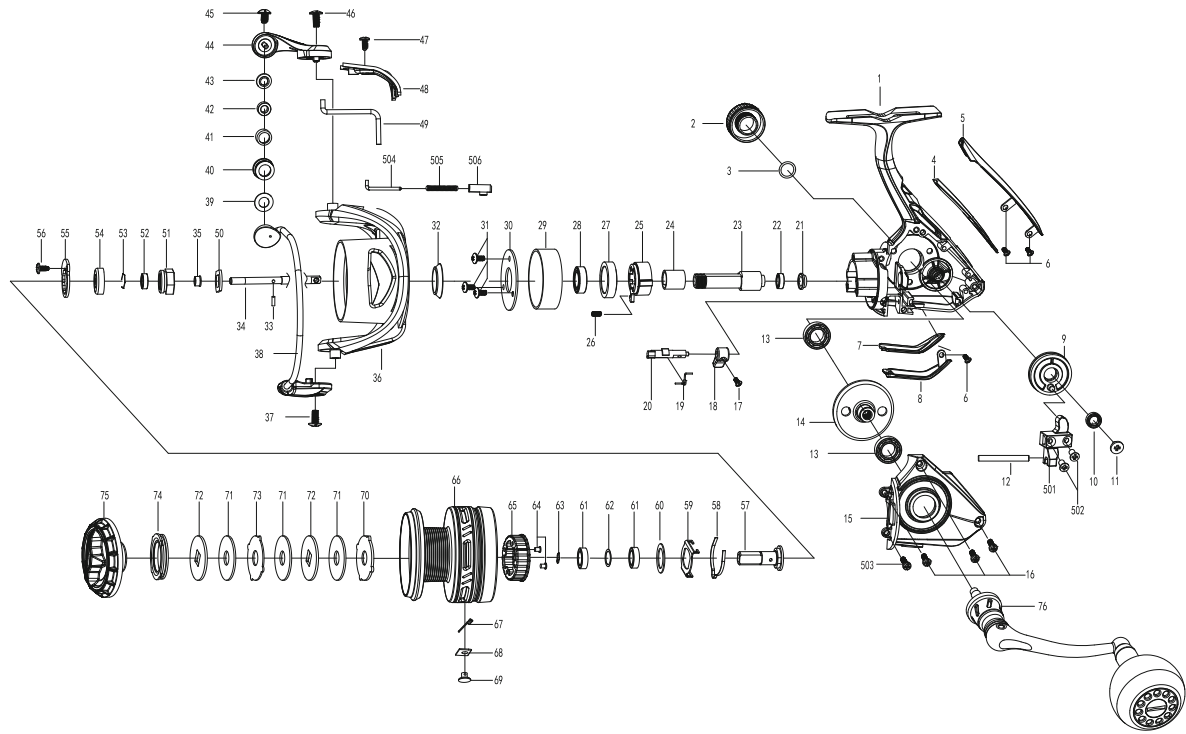


NAUTIX-5000



NO.	PartNumber	Name	NO.	PartNumber	Name	NO.	PartNumber	Name
1	BS0099	Body	29	BS0121	Decoration part	57	BS0145	Shaft bushing
2	BS0002	Handle cap	30	BS0122	Ball bearing cap	58	BS0070	Click Spring
3	BS0003	O-ring A	31	BS0032	Screw	59	BS0071	Click Holder
4	BS0100	Decoration part	32	BS0033	O-ring	60	BS0072	Washer
5	BS0101	Decoration part	33	BS0034	Shaft pin	61	BS0146	Ball bearing
6	BS0006	Screw	34	BS0123	Main shaft	62	BS0147	Washer
7	BS0102	Decoration part	35	BS0124	Shaft bushing	63	BS0075	Spring
8	BS0103	Decoration part	36	BS0125	Rotor	64	BS0076	Screw
9	BS0104	Oscillation gear	37	BS0126	Screw	65	BS0077	Click ratchet
10	BS0105	Ball bearing	38	BS0127	Bail assembly	66	BS0149	Spool assembly
11	BS0106	Screw	39	BS0128	Line roller spacer	67	BS0080	Spring
12	BS0107	Guiding shaft	40	BS0129	Line roller	68	BS0081	Line keeper
13	BS0014	Ball bearing	41	BS0130	Line roller outer bushing	69	BS0082	Line clip
14	BS0108	Drive gear	42	BS0131	Bushing	70	BS0150	Eared washer
15	BS0109	Body cover	43	BS0132	Washer	71	BS0151	Drag washer
16	BS0110	Screw	44	BS0133	Bail arm	72	BS0152	Key washer
17	BS0018	Screw	45	BS0134	Screw	73	BS0153	Eared washer
18	BS0019	Anti-reverse lever	46	BS0135	Screw	74	BS0154	O-Ring
19	BS0111	Spring	47	BS0136	Screw	75	BS0155	Drag knob assembly
20	BS0112	Anti-reverse pin	48	BS0137	Rotor cover	76	BS0156	Handle assembly
21	BS0113	Shaft bushing	49	BS0138	Bail trip lever	501	BS0157	Slider
22	BS0114	Ball bearing	50	BS0139	Rotor nut washer	502	BS0158	Screw
23	BS0115	Pinion gear	51	BS0140	Rotor nut	503	BS0159	Screw
24	BS0116	Roller clutch inner tube	52	BS0141	Ball bearing	504	BS0160	Spring guide bar
25	BS0117	Roller clutch	53	BS0142	Retainer ring	505	BS0161	Spring
26	BS0118	Spring	54	BS0143	Rubber ring	506	BS0162	Bail spring seat
27	BS0119	Ball bearing room	55	BS0144	Handle nut plate			
28	BS0120	Ball bearing	56	BS0068	Screw			

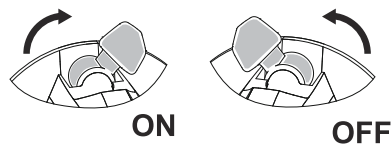
NAUTIX-6000



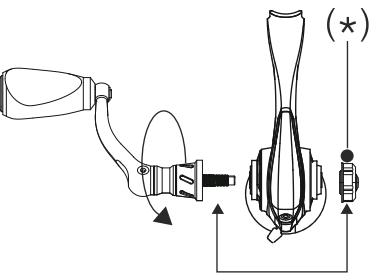
NO.	PartNumber	Name	NO.	PartNumber	Name	NO.	PartNumber	Name
1	BS0099	Body	29	BS0121	Decoration part	57	BS0145	Shaft bushing
2	BS0002	Handle cap	30	BS0122	Ball bearing cap	58	BS0070	Click Spring
3	BS0003	O-ring A	31	BS0032	Screw	59	BS0071	Click Holder
4	BS0100	Decoration part	32	BS0033	O-ring	60	BS0072	Washer
5	BS0101	Decoration part	33	BS0034	Shaft pin	61	BS0146	Ball bearing
6	BS0006	Screw	34	BS0123	Main shaft	62	BS0147	Washer
7	BS0102	Decoration part	35	BS0124	Shaft bushing	63	BS0075	Spring
8	BS0103	Decoration part	36	BS0125	Rotor	64	BS0076	Screw
9	BS0104	Oscillation gear	37	BS0126	Screw	65	BS0077	Click ratchet
10	BS0105	Ball bearing	38	BS0127	Bail assembly	66	BS0148	Spool assembly
11	BS0106	Screw	39	BS0128	Line roller spacer	67	BS0080	Spring
12	BS0107	Guiding shaft	40	BS0129	Line roller	68	BS0081	Line keeper
13	BS0014	Ball bearing	41	BS0130	Line roller outer bushing	69	BS0082	Line clip
14	BS0108	Drive gear	42	BS0131	Bushing	70	BS0150	Eared washer
15	BS0109	Body cover	43	BS0132	Washer	71	BS0151	Drag washer
16	BS0110	Screw	44	BS0133	Bail arm	72	BS0152	Key washer
17	BS0018	Screw	45	BS0134	Screw	73	BS0153	Eared washer
18	BS0019	Anti-reverse lever	46	BS0135	Screw	74	BS0154	O-Ring
19	BS0111	Spring	47	BS0136	Screw	75	BS0155	Drag knob assembly
20	BS0112	Anti-reverse pin	48	BS0137	Rotor cover	76	BS0156	Handle assembly
21	BS0113	Shaft bushing	49	BS0138	Bail trip lever	501	BS0157	Slider
22	BS0114	Ball bearing	50	BS0139	Rotor nut washer	502	BS0158	Screw
23	BS0115	Pinion gear	51	BS0140	Rotor nut	503	BS0159	Screw
24	BS0116	Roller clutch inner tube	52	BS0141	Ball bearing	504	BS0160	Spring guide bar
25	BS0117	Roller clutch	53	BS0142	Retainer ring	505	BS0161	Spring
26	BS0118	Spring	54	BS0143	Rubber ring	506	BS0162	Bail spring seat
27	BS0119	Ball bearing room	55	BS0144	Handle nut plate			
28	BS0120	Ball bearing	56	BS0068	Screw			

How to use Anti-reverse lever

**ON** The handle can only turn forward  
**OFF** The handle can turn forward and backward



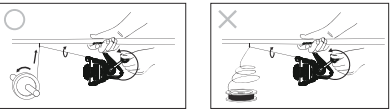
Changing handle position from left to right  
Screw in handle style.



- Remove the handle screw cap.(\*)
  - Turn the handle clockwise and detach the handle assembly.
  - Reassemble in reverse order.
  - Put on the handle screw cap
- There are some models that require a handle shaft change when you switch the handle position.

Winding line

- Attach the reel on rod
- Tighten the drag
- Tie the line on the spool and then use stickers to secure the line
- Turn the handle one time to begin winding the line. Then, turn the line spool vertical (see picture) and put pressure on the line spool\* continue winding under tension until the spool is full



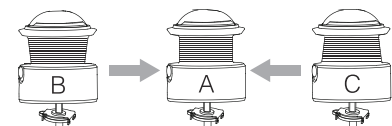
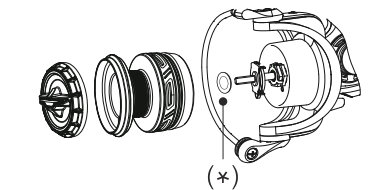
Suggested limit of line capacity

Our spools reduce backlash when you cast. To gain 100% performance, wind the line to "Arrowed line". Don't wind too much line on the spool.



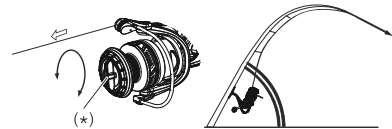
How to adjust line shape on the spool

- Setting upon delivery
- To set to wind more to the back Increase the number of washer(\*) on the spool shaft
- To set to wind more to the front Reduce the number of washer(\*) on the spool shaft



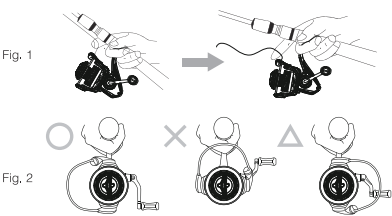
Drag tension adjustment

- Adjustment of drag tension allows the spool to rotate and prevent line breakage when a hooked fish pulls hard on the line.
- Mount the reel on the rod and pass the line through the guides.
  - With the Anti-reverse turned on, pull on the line, as indicated in the diagram, and adjust the tightness of the drag knob when making a long cast, as the drag could slip and result in injury of hand or fingers on the line.
  - As a general rule, adjust the drag tension so that line begins to feed off the spool just before the breaking point. Moreover, always tighten the drag knob when making a long cast, as the drag could slip and result in injury of hand or fingers on the line.



Casting

- Grab the line with your finger. Fig 1
  - Open the bail at the position which is shown on Fig 2
  - Swing the rod and cast.
- Please tighten the drag enough when you cast. If the drag is too loose, there is a possibility of cutting your finger by the spinning spool.



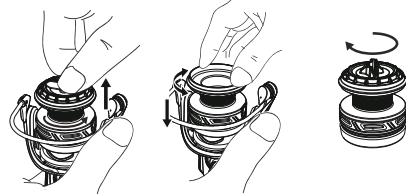
Spool removal & attachment

Removal

Simply turn the drag knob counterclockwise.

Attachment

Slowly turn the spool while sliding it onto the spool shaft until the spool shaft has passed all the way through the spool, then fasten it by turning the drag knob clockwise.



Precautions Concerning Storage

- After use in a saltwater environment and before storing your reel, remove residual salt and dry thoroughly according to the points noted under Basic Maintenance for Use in Saltwater Environments.
- Always remove the reel from the rod before storage. If the reel is rinsed off while mounted on the rod, seawater that has accumulated in the reel seat hood and the reel leg will often remain even after rinsing.
  - Rinsing Use a showerhead, etc., under low pressure to rinse with fresh water and wash away salt and dirt adhering to the exterior of the reel. \*Avoid heated water as it may also wash away grease. For the same reason, the reel should not be immersed in water either. Avoid high pressure wash as it will push salt and debris into the reel.
  - Drying Avoiding direct sunlight. Let dry in a shaded area after thoroughly draining off all water.
  - Exposure to direct sunlight or hot air from a dryer can cause condensation to occur on the interior of the frame.
  - Removing the Maintenance Port cap is recommended as an effective measure when draining off water and drying
  - Oil & Grease Use. Oil and grease correctly as indicated at points illustrated below.

Oil injection

Perform lubrication carefully in a well-ventilated area as oil and grease particles may spatter or linger in the air.

To spray inside the Maintenance port, use a flat-head screwdriver to remove the cap then insert 1-2 drops.

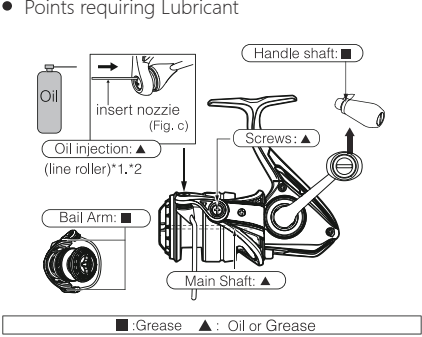
We recommend you to spray oil once every 5 times you go fishing or when you have 1 month or more until your next fishing trip. Be sure reattach the Maintenance Port cap once spraying of oil is complete otherwise you may stain your clothing by spilt oil.

\*Do not spray grease from oil injection too much.  
Anti-reverse stopper may not work properly.

Line roller oil injection

Use oil or grease spray, Put the nozzle inside the injection and press the button quickly (Fig.c)  
(There are some areas where we don't apply the oil and grease spray.)  
\*Attention: Take off the spool and cover the line roller when you spray. Oil or grease may spill from the line roller, wipe off the line roller after your spray, Spilt oil or grease may spread out of the line roller and stain your clothes.

- Do not put grease inside of the Roller bearing or spray inside the rotor, The anti-reverse may not work properly.
- Points requiring Lubricant



\*The picture is different from actual product.  
\*There are some products which don't have oil injection or Anti-reverse lever.  
\*There are some products where external line roller lubrication is not offered.

Precautions Concerning Storage

Always remove the reel from the rod before storage. Leaving your reel in an enclosed space (e.g. car trunk or storage compartment on a boat) under extremely hot, humid conditions, may compromise its ability to resist the effects of corrosion. Dry the reel well and keep it in a well-ventilated location.



NAUTIX

Product manual

More after-sales policies: WWW.PISCIFUN.COM E-mail: CS@PISCIFUN.COM

Return & Warranty Policy

Dear Valued Customer,  
Thank you for choosing our fishing reel products! To provide you with the best experience and protect your rights, we've outlined the following after-sales service policy. Please read and retain this policy for future reference.

Warranty Period  
•Free Return/Exchange: Within 1 month (unused items or due to quality issues only).  
•Free Warranty: Within 1 year.  
•Paid Warranty: Available up to 3 years.  
The warranty covers defects caused by manufacturing but excludes damage from improper use, accidents, or human error. Retain your purchase receipt (order screenshot, date, and platform details) as valid proof for service.

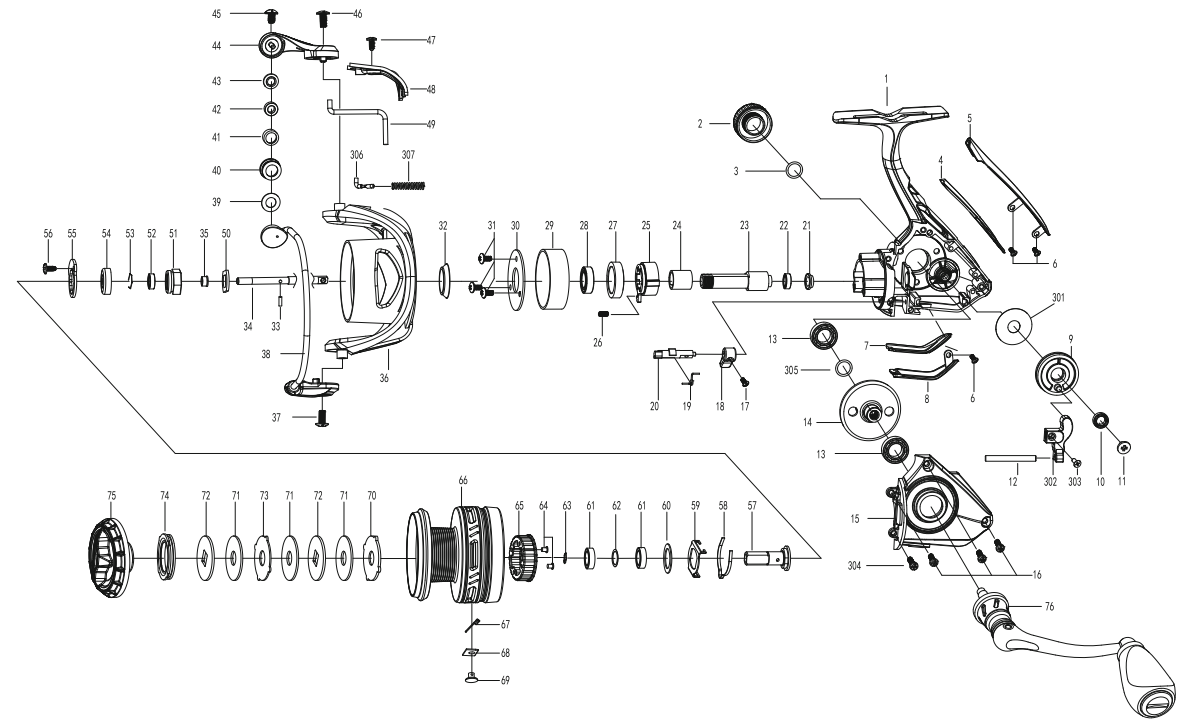
After-Sales Service Process  
1.Contact Customer Service: Reach us through our official website, hotline, or online chat. Provide a screenshot of your purchase order and order number.  
2.Diagnosis: Based on your description, we'll conduct an initial diagnosis. If needed, the product may need to be returned for detailed inspection.  
3.Repair Confirmation: After diagnosis, we'll inform you of the repair plan and costs (if applicable).  
4.Repair Implementation: Upon your approval, we'll complete the repair promptly and notify you for pickup or arrange for return shipping.  
5.Service Tracking: Stay updated on the repair progress with our tracking service.

We are committed to providing professional, high-quality after-sales support and ensuring your satisfaction.

Order Cancellations: Orders can be canceled within 24 hours of placement. We will do our best to intercept shipments if possible.

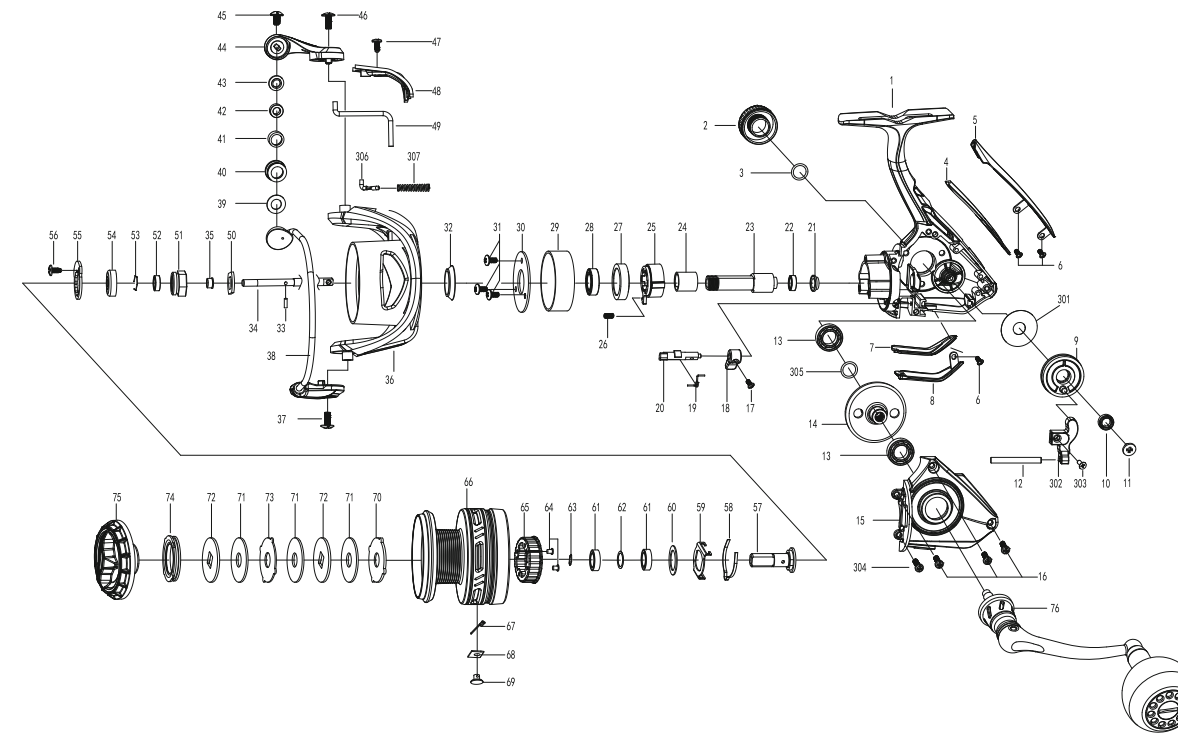
Your satisfaction drives us to continuously improve. Thank you for choosing Piscifun.

NAUTIX-3000



NO.	PartNumber	Name	NO.	PartNumber	Name	NO.	PartNumber	Name
1	BS0001	Body	29	BS0030	Decoration part	57	BS0069	Shaft bushing
2	BS0002	Handle cap	30	BS0031	Ball bearing cap	58	BS0070	Click Spring
3	BS0003	O-ring A	31	BS0032	Screw	59	BS0071	Click Holder
4	BS0004	Decoration part	32	BS0033	O-ring	60	BS0072	Washer
5	BS0005	Decoration part	33	BS0034	Shaft pin	61	BS0073	Ball bearing
6	BS0006	Screw	34	BS0035	Main shaft	62	BS0074	Washer
7	BS0007	Decoration part	35	BS0037	Shaft bushing	63	BS0075	Spring
8	BS0008	Decoration part	36	BS0038	Rotor	64	BS0076	Screw
9	BS0009	Oscillation gear	37	BS0040	Screw	65	BS0077	Click ratchet
10	BS0011	Ball bearing	38	BS0041	Bail assembly	66	BS0078	Spool assembly
11	BS0012	Screw	39	BS0042	Line roller spacer	67	BS0080	Spring
12	BS0013	Guiding shaft	40	BS0043	Line roller	68	BS0081	Line keeper
13	BS0014	Ball bearing	41	BS0044	Line roller outer bushing	69	BS0082	Line clip
14	BS0015	Drive gear	42	BS0045	Bushing	70	BS0083	Eared washer
15	BS0016	Body cover	43	BS0046	Washer	71	BS0084	Drag washer
16	BS0017	Screw	44	BS0047	Bail arm	72	BS0085	Key washer
17	BS0018	Screw	45	BS0055	Screw	73	BS0086	Eared washer
18	BS0019	Anti-reverse lever	46	BS0056	Screw	74	BS0087	O-ring
19	BS0020	Spring	47	BS0057	Screw	75	BS0088	Drag knob assembly
20	BS0021	Anti-reverse pin	48	BS0058	Rotor cover	76	BS0089	Handle assembly
21	BS0022	Shaft bushing	49	BS0059	Bail trip lever	301	BS0091	Washer
22	BS0023	Ball bearing	50	BS0062	Rotor nut washer	302	BS0092	Slider
23	BS0024	Pinion gear	51	BS0063	Rotor nut	303	BS0093	Screw
24	BS0025	Roller clutch inner tube	52	BS0064	Ball bearing	304	BS0094	Screw
25	BS0026	Roller clutch	53	BS0065	Retainer ring	305	BS0095	O-Ring
26	BS0027	Spring	54	BS0066	Rubber ring	306	BS0096	Spring
27	BS0028	Ball bearing room	55	BS0067	Handle nut plate	307	BS0098	Spring guide bar
28	BS0029	Ball bearing	56	BS0068	Screw			

NAUTIX-4000



NO.	PartNumber	Name	NO.	PartNumber	Name	NO.	PartNumber	Name
1	BS0001	Body	29	BS0030	Decoration part	57	BS0069	Shaft bushing
2	BS0002	Handle cap	30	BS0031	Ball bearing cap	58	BS0070	Click Spring
3	BS0003	O-ring A	31	BS0032	Screw	59	BS0071	Click Holder
4	BS0004	Decoration part	32	BS0033	O-ring	60	BS0072	Washer
5	BS0005	Decoration part	33	BS0034	Shaft pin	61	BS0073	Ball bearing
6	BS0006	Screw	34	BS0036	Main shaft	62	BS0074	Washer
7	BS0007	Decoration part	35	BS0037	Shaft bushing	63	BS0075	Spring
8	BS0008	Decoration part	36	BS0039	Rotor	64	BS0076	Screw
9	BS0010	Oscillation gear	37	BS0040	Screw	65	BS0077	Click ratchet
10	BS0011	Ball bearing	38	BS0048	Bail assembly	66	BS0079	Spool assembly
11	BS0012	Screw	39	BS0049	Line roller spacer	67	BS0080	Spring
12	BS0013	Guiding shaft	40	BS0050	Line roller	68	BS0081	Line keeper
13	BS0014	Ball bearing	41	BS0051	Line roller outer bushing	69	BS0082	Line clip
14	BS0015	Drive gear	42	BS0052	Bushing	70	BS0083	Eared washer
15	BS0016	Body cover	43	BS0053	Washer	71	BS0084	Drag washer
16	BS0017	Screw	44	BS0054	Bail arm	72	BS0085	Key washer
17	BS0018	Screw	45	BS0055	Screw	73	BS0086	Eared washer
18	BS0019	Anti-reverse lever	46	BS0056	Screw	74	BS0087	O-ring
19	BS0020	Spring	47	BS0057	Screw	75	BS0088	Drag knob assembly
20	BS0021	Anti-reverse pin	48	BS0058	Rotor cover	76	BS0090	Handle assembly
21	BS0022	Shaft bushing	49	BS0061	Bail trip lever	301	BS0091	Washer
22	BS0023	Ball bearing	50	BS0062	Rotor nut washer	302	BS0092	Slider
23	BS0024	Pinion gear	51	BS0063	Rotor nut	303	BS0093	Screw
24	BS0025	Roller clutch inner tube	52	BS0064	Ball bearing	304	BS0094	Screw
25	BS0026	Roller clutch	53	BS0065	Retainer ring	305	BS0095	O-Ring
26	BS0027	Spring	54	BS0066	Rubber ring	306	BS0097	Spring
27	BS0028	Ball bearing room	55	BS0067	Handle nut plate	307	BS0098	Spring guide bar
28	BS0029	Ball bearing	56	BS0068	Screw			