

ANC LX-20



用户手册 User manual

01 开机动画

- A. 首次开机时候有动画进行HELLO,;
B. 首次开机用按键长按2秒开启;



(开机动画)

02 连接符号说明

- A. 仓未连接耳机: ✖
B. 耳机已经连接仓未连接手机: ✖
C. 耳机已经连接仓并连接手机: ✖



03 开盖实物动画

- A. 开盖时候, 会显示耳机在仓的状态效果;
B. 耳机拿出来的时候会展示耳机的拿取的状态效果;
C. 耳机放入的时候会展示耳机的放入的状态效果;

ANC LX-20



User manual

01 Boot animation

- A. When starting up for the first time, there is an animation for HELLO,;
B. Press and hold the button for 2 seconds to turn on the device for the first time;



(Power on animation)

02 Connection symbol description

- A. Warehouse not connected to headphones: ✖
B. Headphones already connected but not connected to phone: ✖
C. The earphones are connected to the compartment and the phone: ✖



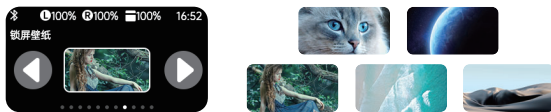
03 Open lid physical animation

- A. When opening the lid, it will display the effect of the earphones in the compartment;
B. When the earphones are taken out, the status and effect of the earphones will be displayed;
C. When the earphones are inserted, the status and effect of the earphones will be displayed;

04 锁屏功能

■注:耳机连上了仓才能选择

- A. 锁屏选择:
1、左右按键选择锁屏图纸; (共有 5 张图片)
2、停留在当前图片, 即选择当前的图纸为锁屏图纸
B. 锁屏效果

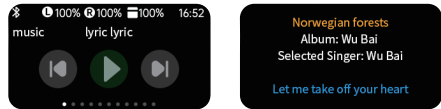


(5款壁纸选择)

05 音乐控制功能

■注:耳机连上了仓并且连上了手机才能显示

- A. 控制上下曲、播放暂停;
B. 歌词同步 (可以看到手机设备播放软件播放的歌曲的歌词, 这里请注意的一点, 是需要设置播放器的“车载 play”或者是上传歌词功能, 请针对不一样播放器做一定的设置, 方可使用。);
C. 歌词同步的显示歌词的内容需要与供应商沟通, 需要做的时候做好与业务沟通;
D. K 歌模式: 点击歌词可以进入歌词的滚动 K 歌模式, 全屏歌词显示。(进入 K 歌模式, 歌词可以单次显示 5 分钟时间。)



04 Lock screen function

■ Note: Only when the earphones are connected to the compartment can they be selected

- A. Lock screen selection:
1. Press the left and right buttons to select the lock screen drawing; (5 images in total)
2. Stay in the current image, that is, select the current drawing as the lock screen drawing
B. Lock screen effect

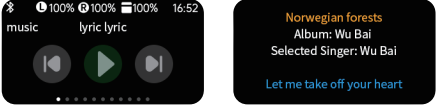


(5 wallpaper options)

05 Music control function

■ Note: Only when the earphones are connected to the compartment and the phone is connected can they be displayed

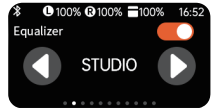
- A. Control up and down tracks, pause playback;
B. Lyrics synchronization (you can see the lyrics of the songs played by the software on your mobile device. Please note thatNeed to set the "car play" or upload lyrics function for the player, please make certain adjustments for different players Only after setting can it be used;
C. The synchronized display of lyrics requires communication with suppliers, and communication with business is necessary when necessary;
D. K Song Mode: Clicking on the lyrics allows you to enter the scrolling K Song mode of the lyrics, which displays the lyrics in full screen. (Enter karaoke mode, The lyrics can be displayed for 5 minutes at a time



06 均衡器功能

■注:耳机连上了仓才能选择

- A. 可以选择开或关均衡器功能; 在右上角有个开关
B. 可以通过显示屏按钮选择不一样的 6 种特定 EQ 音效



JAZZ (爵士乐) — VOCAL (声乐) — BASS (低音) — CLUB (俱乐部) —
STUDIO (录音室) — CUSTOM (自定义)

07 ANC 降噪功能设置

■环境音处理, 耳机连上了仓才能选择



08 空间音频功能

■开关打开后, 图显空间音频符号: 🗣️

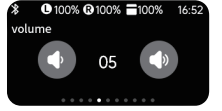
- A. 看剧模式; B. 音乐模式; C. 游戏模式



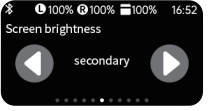
09 音量/屏幕控制

■耳机连上了仓才能选择

- A. 音量在 0-16 之间可控 B. 高中低的亮度控制



(音量控制)



(亮度控制)

10 查找耳机功能

- A. 可以查找 L 左耳, R 右耳
B. 进入了 L 或者 R 后, 进入查找响音界面:



(音量控制)



(亮度控制)

10 语言选择功能/来电显示

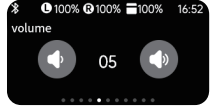
- A. 21 语言选择。



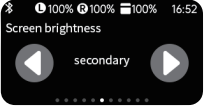
09 Volume/Screen Control

■ The earphones can only be selected after being connected to the compartment

- A. Volume controllable between 0 and 16 B. High, medium, and low brightness control



(Volume control)



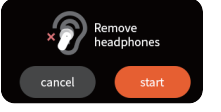
(Brightness control)

10 Search for headphone features

- A. You can search for L's left ear, R Right Ear
B. After entering L or R, enter the sound search interface:



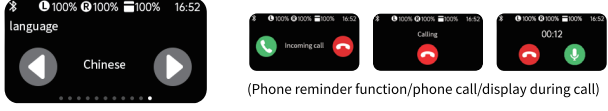
(Volume control)



(Brightness control)

10 Language selection function/caller ID display

- A. 21 language choices.



(Phone reminder function/phone call/display during call)

11 耳机按键功能

开/关机

- 开机: 长按触摸键1.5秒
关机: 长按按触摸键3秒, 主/副耳

切换上/下曲

- 下一曲: 双击右声道切换歌曲
上一曲: 双击左声道切换歌曲

ANC降噪模式

- 长按左声道切换, 降噪、通透、关闭
三个模式相互切换

来电状态

- 接听/挂断: 单击接听, 通话中单击挂断电话
拒接来电: 长按左/右声道2秒拒接电话

中英文切换

未连接手机双击功能键即可切换中英文

音量调节

- 音量加: 三击右声道加音量
音量减: 三击左声道减音量

播放/暂停

- 单击左/右耳播放暂停音乐

呼叫语音助手

- 长按右声道唤醒SIRI

12 LED灯闪烁

■亮红灯:

1. 关机

■亮蓝灯:

1. 开机

■红灯闪烁:

1. 低电

■不亮灯:

1. 音乐播放 2. 音乐暂停 3. 来电 4. 通话中 5. 低电量6. 充满电7. 连接成功

13 参数展示

■耳机参数

配对名称	LX-20	产品类型	ANC降噪耳机
芯片版本	V5.4	播放时长	约4-5H
喇叭尺寸	φ10	频率响应	20Hz-20kHz
耳机电池容量	40mAh	充电时间	0.5-1H
充电方式	顶针接触	待机时间	约120H

■智能屏参数

屏幕尺寸	1.47寸	屏幕分辨率	172*320
电池容量	300mAh	充电方式	TYPE-C

14 耳机注意事项

- 请勿以任何理由拆开、维修或改装耳机, 否则可能会导致起火、电子击穿甚至彻底损坏本产品。
- 请勿将产品置于温度过低或过高(0°C以下或45°C以上)的环境下。
- 请勿在雷雨天气使用本设备, 雷雨天气可能会导致设备故障或电击危险。
- 请勿使用烈性化学制品、清洗剂或强洗涤剂清洁设备或其配件。
- 请勿将设备靠近热源或裸露的火源, 如电暖器、微波炉、烤箱、热水器、炉火蜡烛或其他可能产生高温的地方。
- 请勿长时间大音量听音乐会造成听力损害, 使用该设备时请调整到适当音量。
- 请勿自行更换电池, 本设备配有不可拆卸的内置电池, 以免损坏电池或设备。不建议私自更换。
- 清洁和维护前, 请停止使用本设备, 关闭所有应用, 并断开与其他设备的所有连接或线缆。

12 LED flashing

■ Red light on: 1. Shutdown ■ Bright blue light: 1. Power on ■ No light on: 1. Low battery

■ No flashing light: 1. Music playback 2, music pause 3, incoming call 4, in progress 5, low battery 6, fully charged 7, successful connection

13 Parameter display

■ Headphone parameters

Pairing Name	LX-20	product type	ANC noise reduction
Chip version	V5.4	Playback duration	Approximately 4-5H
Drive Unit	φ10	frequency response	20Hz-20kHz
Earphone capacity	40mAh	Charging time	0.5-1H
Charging method	Thimble contact	Standby time	Approximately 120H

■ Smart screen parameters

Screen size	1.47/in	Screen resolution	172*320
Battery capacity	300mAh	Charging method	TYPE-C

14 Earphone precautions

- Do not disassemble, repair, or modify headphones for any reason, as it may cause fire, electronic breakdown, or even complete damage to this product.
- Do not place the product in an environment where the temperature is too low or too high (below 0 °C or above 45°C).
- Do not use this device in thunderstorm weather as it may cause equipment malfunction or electric shock hazards.
- Do not use strong chemicals, cleaning agents, or strong detergents to clean equipment or its accessories.
- Do not place the device close to heat sources or exposed sources of fire, such as electric heaters, microwaves, ovens, water heaters, stove candles, or other possible sources A place that generates high temperatures.

15 屏幕注意事项

- 操作按钮或触摸屏: 请按照说明书中的指示准确操作按钮或触摸屏, 避免错误操作。
- 显示内容: 显示屏可以显示各种信息, 包括来电通知、音乐播放状态、电池电量等。请确保了解屏幕上显示的各种信息的含义和操作方法。
- 屏幕保护与维护: 为了保护屏幕免受划伤和损坏, 建议避免在尘土或湿润环境中使用耳机。请使用柔软的布清洁屏幕, 并避免使用含有化学成分清洁剂。
- 电源状态指示: 显示屏通常会显示电池电量、连接状态等信息。请注意屏幕上显示的相关指示符号或图标, 以便了解耳机的当前状态。
- 避免在强光下长时间使用屏幕, 以免影响屏幕的显示效果。在操作时请轻按屏幕, 避免用力过度造成损坏
- 收纳注意事项: 在将耳机存放或携带时, 请注意避免将重物或压力施加在显示屏区域, 以免导致屏幕损坏或压碎。并确保屏幕不会受到外部压力或碰撞影响。

16 禁止

- 禁止拆解、撞击、挤压电池或投入火中、插入异物, 以免引起电池漏液过热、起火或爆炸。
- 本设备并非玩具, 儿童应在成人监护下使用本设备配件要求。
- 若出现严重肿胀禁止继续使用。
- 禁止置于高温环境中、远离火源。
- 电池浸水或其它液体中后禁止使用。

- Please do not listen to music at high volume for a long time, which may cause hearing damage. When using this device, please adjust the volume to the appropriate level.
- Do not replace the battery by yourself. This device is equipped with a non removable built-in battery to avoid damaging the battery or device. It is not recommended to replace without authorization.
- Before cleaning and maintenance, please stop using this device, close all applications, and disconnect all connections with other devices Connection or cable.

15 Screen precautions

- Operate buttons or touch screens: Please follow the instructions in the manual to accurately operate buttons or touch screens and avoid incorrect operations.
- Display content: The screen can display various information, including call notifications, music playback status, battery level, etc. Please make sure to understand the meaning and operation methods of the various information displayed on the screen.
- Screen Protection and Maintenance: To protect the screen from scratches and damage, it is recommended to avoid exposure to dust or humid environments Use headphones. Please use a soft cloth to clean the screen and avoid using cleaning agents containing chemicals.
- Power status indicator: The display screen usually displays information such as battery level and connection status. Please pay attention to the information displayed on the screen Relevant indicators or icons to understand the current status of the headphones
- Avoid prolonged use of the screen during operation, avoid excessive force causing damage
- Storage precautions: When storing or carrying headphones, please be careful not to apply heavy objects or pressure to the display screen area to prevent screen damage or crushing. And ensure that the screen is not affected by external pressure or collisions.

16 Prohibit

- It is prohibited to disassemble, impact, squeeze the battery, or put it into fire or insert foreign objects to avoid causing battery leakage and overheating Ignite or explode.
- This device is not a toy and children should use it under adult supervision. The accessories for this device are required.
- If there is severe swelling, it is prohibited to continue using.
- Do not place in a high-temperature environment and keep away from sources of fire.
- Do not use the battery after immersion in water or other liquids.

FCC warning:

1. This device should be installed and operated with minimum distance 0cm between the radiator&your body.
2. This device complies with part 15 of the FCC Rules. Operation is subject to the following two conditions:
 - (1) This device may not cause harmful interference, and
 - (2) This device must accept any interference received, including interference that may cause undesired operation.
3. Changes or modifications not expressly approved by the party responsible for compliance could void the user's authority to operate the equipment.
4. This equipment has been tested and found to comply with the limits for a Class B digital device, pursuant to part 15 of the FCC Rules. These limits are designed to provide reasonable protection against harmful interference in a residential installation. This equipment generates, uses and can radiate radio frequency energy and, if not installed and used in accordance with the instructions, may cause harmful interference to radio communications. However, there is no guarantee that interference will not occur in a particular installation. If this equipment does cause harmful interference to radio or television reception, which can be determined by turning the equipment off and on, the user is encouraged to try to correct the interference by one or more of the following measures:
 - Reorient or relocate the receiving antenna.
 - Increase the separation between the equipment and receiver.
 - Connect the equipment into an outlet on a circuit different from that to which the receiver is connected.
 - Consult the dealer or an experienced radio/TV technician for help.