

Detailed User Manual

Step 1A: Getting Started

Cielo Breez Max can be mounted on a wall using the backplate or placed on a table using the table stand (both included in the box).

Before finalizing the placement, it is recommended to first power up, register, and test the device to ensure signals can easily reach the AC.

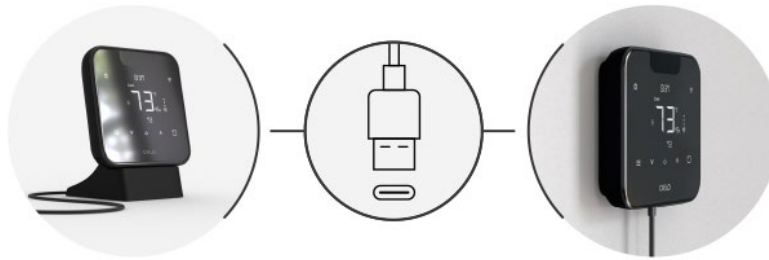
For optimal placement and control:

- Make sure Breez Max is in the line of sight of your air conditioner or heat pump.
- To avoid deviated sensor readings, do not place Breez Max where it may be exposed to excessive sunlight or other heat sources.

Note: It is strongly advised that whenever there is a need to use the remote control for AC/heat pump, point it towards Breez Max while performing any action. This way, your AC/heat pump and Cielo Home app will always be in sync.

Powering Up Options

Breez Max can be powered up using a 5V adapter (always use the provided power adapter and USB cable for optimal results).



OR

Through wired connection
options of 24V or 12V.



Please **DO NOT** use any other voltage level to power up Breez Max. Please choose **ONLY ONE** power-up option, i.e., either 5V OR 24/12V.

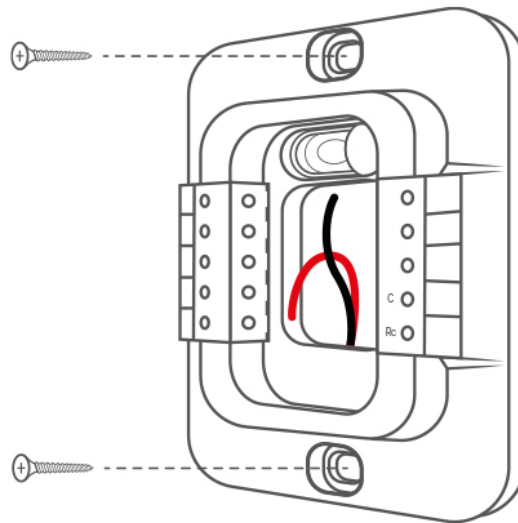
Instructions for Wired Connection

Step 1: Switch off the power by using the circuit breaker. This is very important for your safety.

Step 2: Find a point where 24V or 12V is available (In case of non-availability of 24V/12V point, you can either DIY or consult a professional installer). Ensure that chosen point is also in the line of sight of your AC.

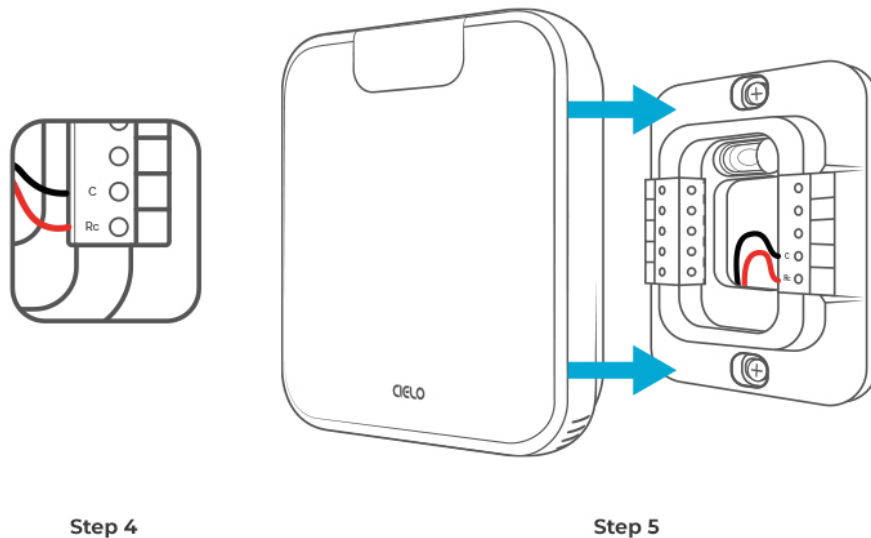
Note: Please DO NOT use any other voltage level to power up Breez Max.

Step 3: Take out the wires through the hole in the middle of the backplate. Screw in the backplate using the provided pair of drywall anchors and screws.



Step 4: Cielo Breez Max has two terminals marked as Rc and C on its backplate. Insert red wire into Rc and black wire into C from the side (press the terminal block buttons for ease of insertion).

Step 5: Align your Cielo Breez Max with the backplate and press gently to fix it properly.



Your installation is complete. Please switch on the power from the circuit breaker.

Step 1B: Prior to App Installation

For your phone:

- Make sure your smartphone's Bluetooth is turned ON.
- Make sure your smartphone's Wi-Fi is turned ON.
- Make sure your smartphone has internet access.

For your Wi-Fi router:

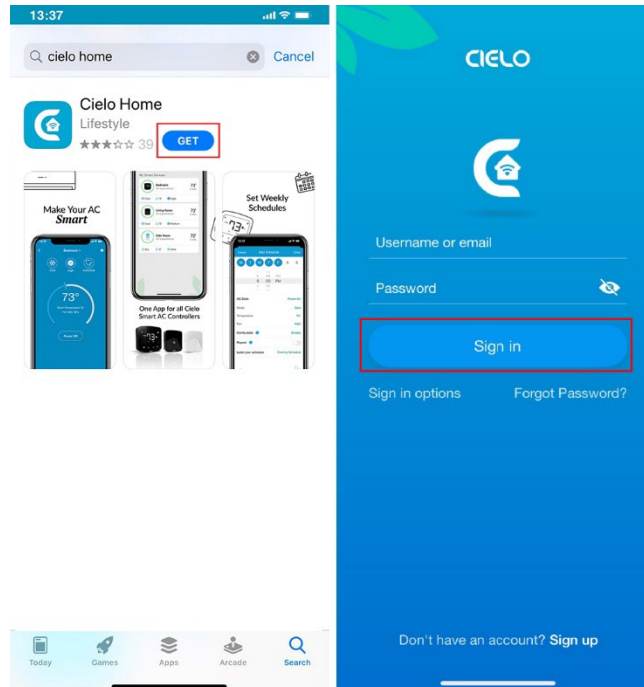
- Make sure you have a working internet connection on your Wi-Fi router.
- Make sure there is no proxy server or authentication server configured on your internet connection.
- Make sure there is no captive portal on your Wi-Fi router.

Note: Make sure IP isolation or client isolation is turned OFF on your Wi-Fi router.

Step 2: App Installation & Registration

Install the 'Cielo Home' app from the App Store.

Log in to the app if you already have an account; otherwise, create one using the sign-up option.



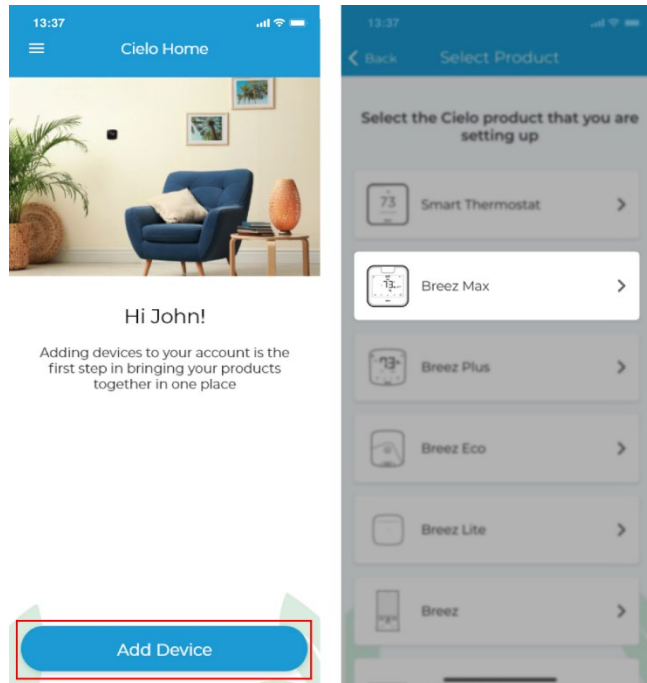
Step 3: Device Registration

Device registration process connects Breez Max to your home Wi-Fi network through the Cielo Home app.

Note:

- For iOS 13.0 & above, location permission is required to complete the registration process. You may disable it later.
- Local Network Access permission is a requirement for iOS 14.0 onwards to successfully register the device.

Open the Cielo Home app, tap 'Add Device' on the home screen, and select Breez Max from the list of devices.

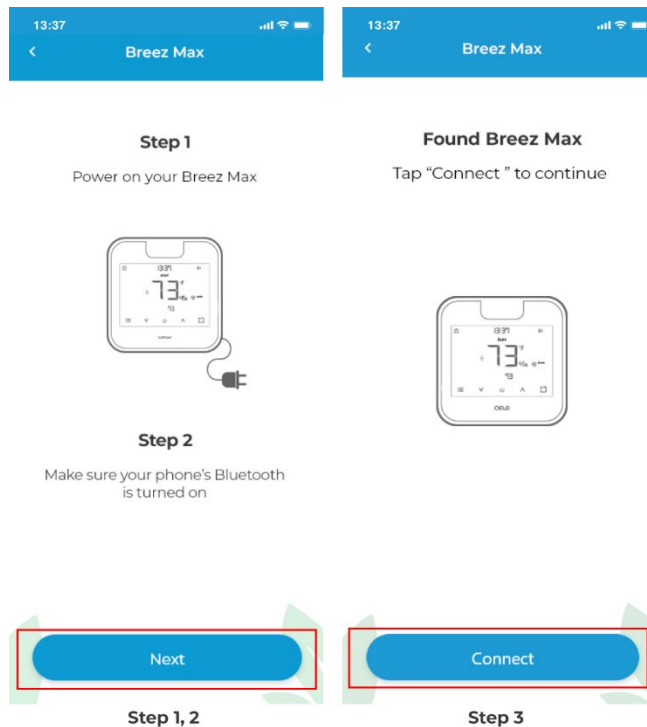


Follow the steps to successfully pair your Breez Max with your phone.

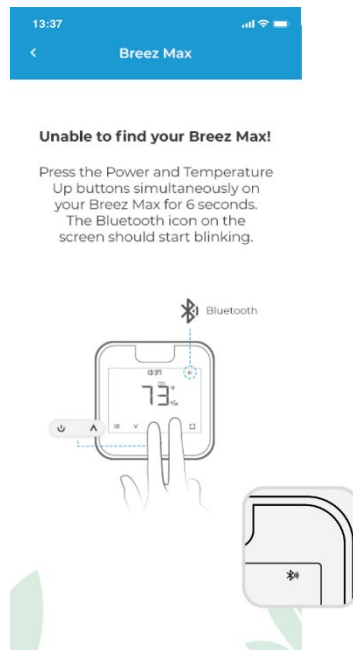
Step 1: Make sure your Breez Max is powered on.

Step 2: Make sure your phone's Bluetooth is turned on. Tap 'Next'.

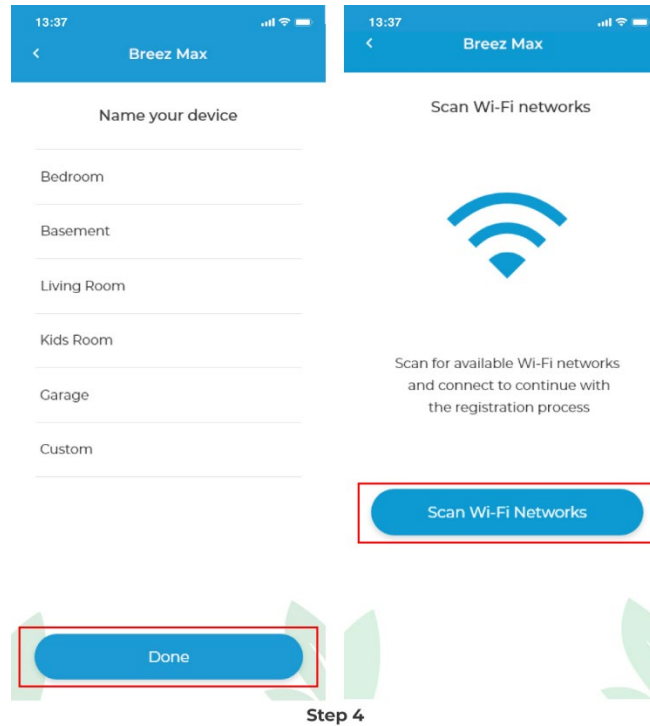
Step 3: Wait for Cielo Breez Max to appear on the screen. Then, tap 'Connect'.



Note: In case Breez Max does not appear, touch and hold the Power and Temperature Up buttons simultaneously for 6 seconds. The Bluetooth icon on the screen should start blinking, and the app will automatically move to the next screen.



Step 4: Your device is now successfully paired with Bluetooth. Name your device and connect it to a Wi-Fi network.

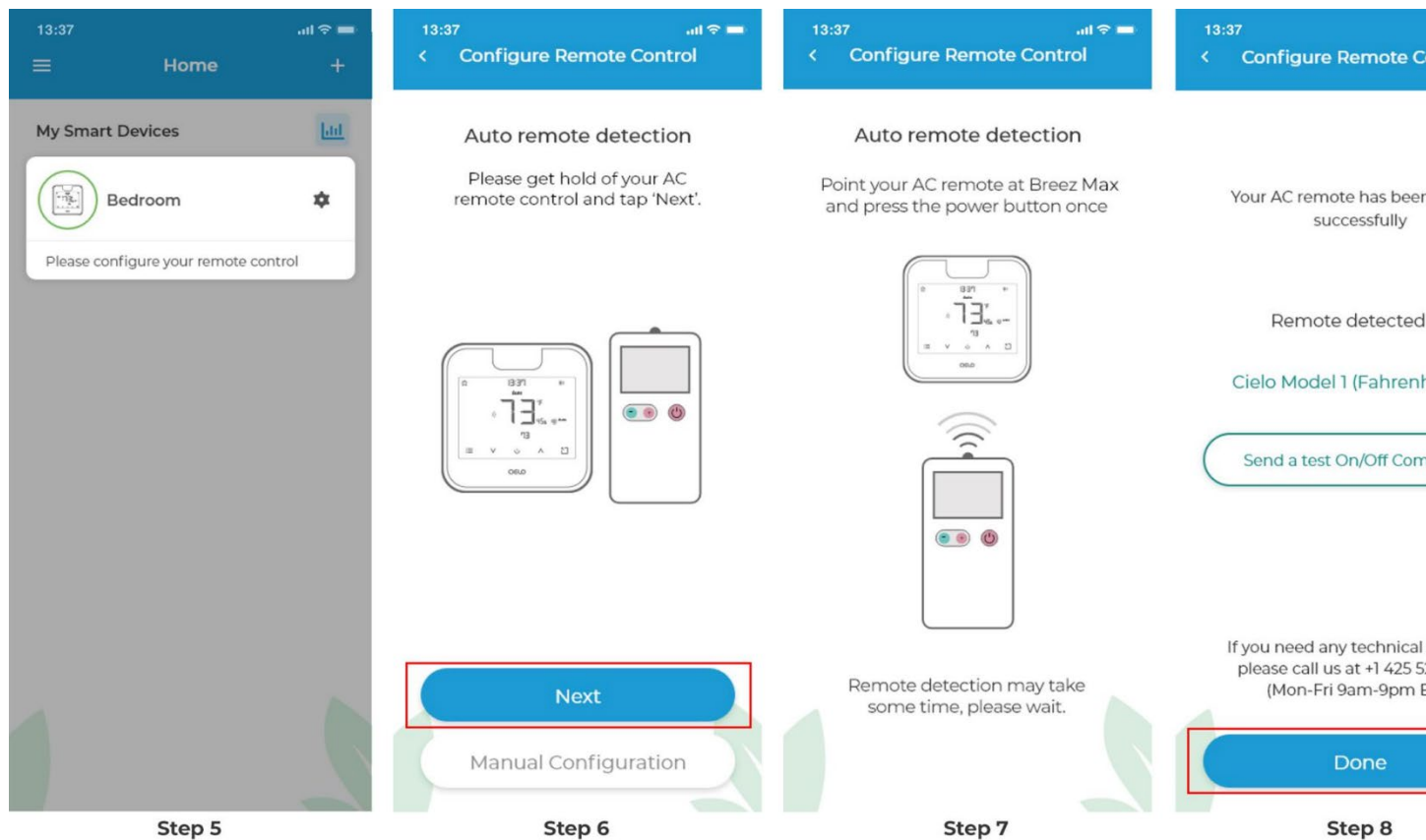


Step 5: After Wi-Fi configuration, your device will appear on the home screen. Tap the device to start the remote configuration process.

Step 6: Get hold of your AC remote and tap 'Next'.

Step 7: Point your AC remote at Breez Max and press the remote's 'Power button' once. It will start the configuration process.

Step 8: The configuration screen will display your detected remote control. Tap 'Send a test On/Off Command'. Your AC will switch on/off.



Your remote is now successfully paired with Breez Max. Tap on 'Done'.

Registration process is complete. Enjoy your smart air conditioning!

Your Home Screen

Your home screen shows the real-time status of all your Cielo devices. A registered Cielo device can show either of the 2 statuses outlined in circles:

- 1 - **Green** - Device is online. You're good to go!
- 2 - **Red** - Device is offline. (try following options)
 - Ensure your phone/device is connected to a working internet connection.
 - Refresh the home screen by swiping downwards (Pull-to-refresh).



Enjoy Unlimited Functionalities



Configuring the Right Remote Control for Your AC

Breez Max auto-detects the relevant remote control for your AC during the registration process. You can also configure your AC remote manually.

For manual selection, follow these steps:

A: Go to settings by tapping the 'Settings' icon on the control screen.

B: Select 'Change Appliance'.

C: Select 'Manual Configuration'.

D: Select the 'Manufacturer' & 'Remote Model' from the drop-down list and tap 'Done'.

13:37



Bedroom ▾



Cool



Medium



Auto/Stop



Presets

73°

Room Temperature 73°

Humidity 45%

Power Off

13:37

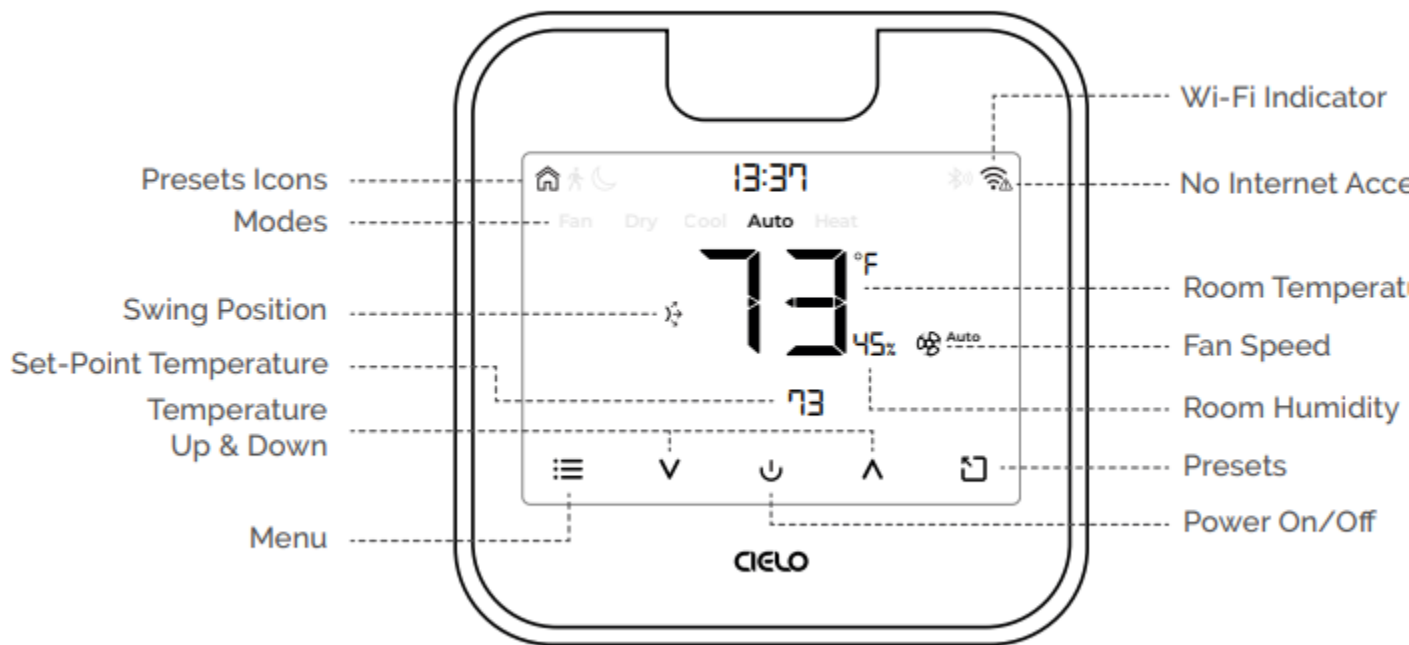


Sett



Quick Tip: Remote control model number is usually found on the back side of the remote control.

Know Your Breez Max



Adjusting the temperature of your AC:

Use the up or down button to set the temperature of your choice.

Changing the mode of your AC:

Touch the menu button once. The AC modes will start blinking. Use the up or down button to select the mode (e.g. Cool, Heat etc.).

Changing the fan speed:

Touch the menu button twice. The fan speed icon will start blinking. Use the up or down button to change the fan speed.

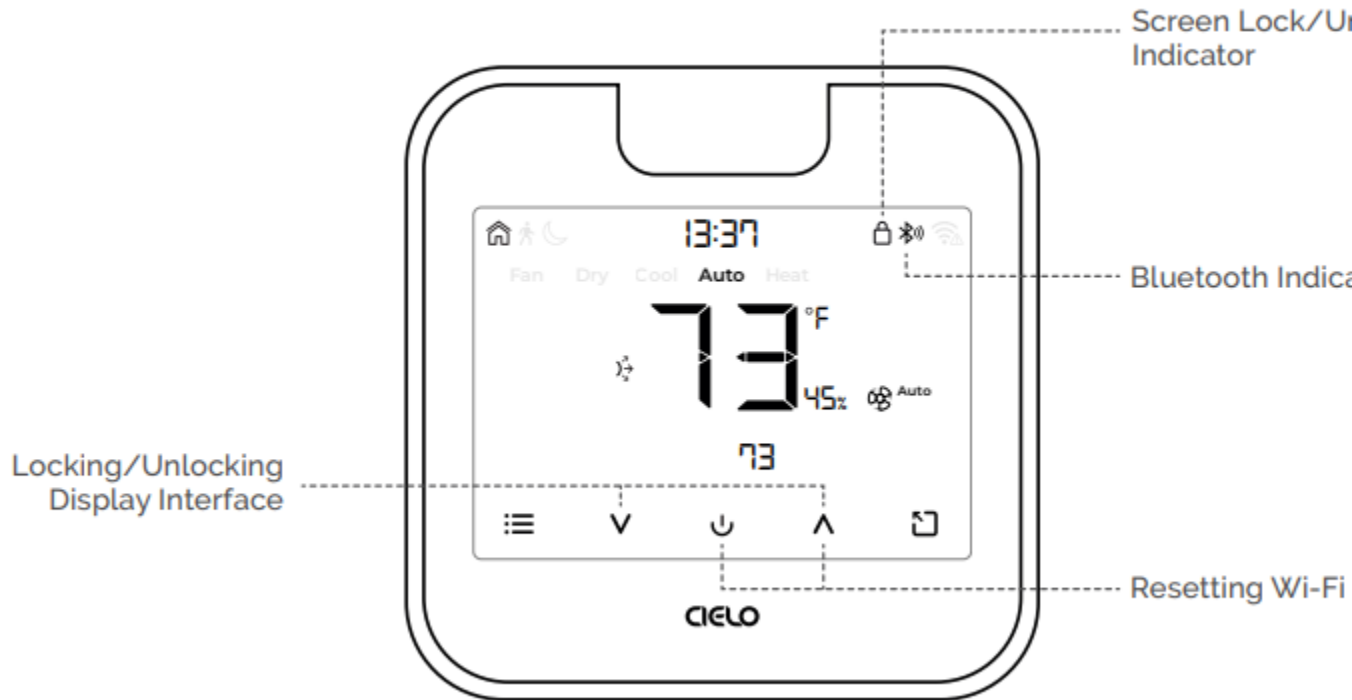
Adjusting the swing position:

Touch the menu button thrice. The swing position icon will start blinking. Use the up or down button to select the swing position.

Changing multiple settings:

You can set the mode, swing position & fan speed. Touch the menu button once and select

the mode of your choice. Touch the menu button again and adjust the fan speed. Touch the menu button again and select the swing position.



Locking/Unlocking the display interface:

Touch and hold the Temperature Up and Down buttons simultaneously until the lock icon on the top right of the screen turns solid/disappears.

Resetting the Wi-Fi of Breez Max:

Touch and hold the Temperature Up and Power buttons simultaneously until the Wi-Fi icon disappears and the Bluetooth icon starts blinking.

Wi-Fi Icon:

Case 1:- Stable Wi-Fi icon - Device is connected to the internet, showing Wi-Fi strength.

Case 2:- Wi-Fi icon with small triangle - Device is connected to the router but has no internet access. Please ensure you have a working internet connection and restart the device.

Bluetooth Icon:

Blinking Bluetooth icon - Device is in broadcast (AP) mode. Please complete the registration process.

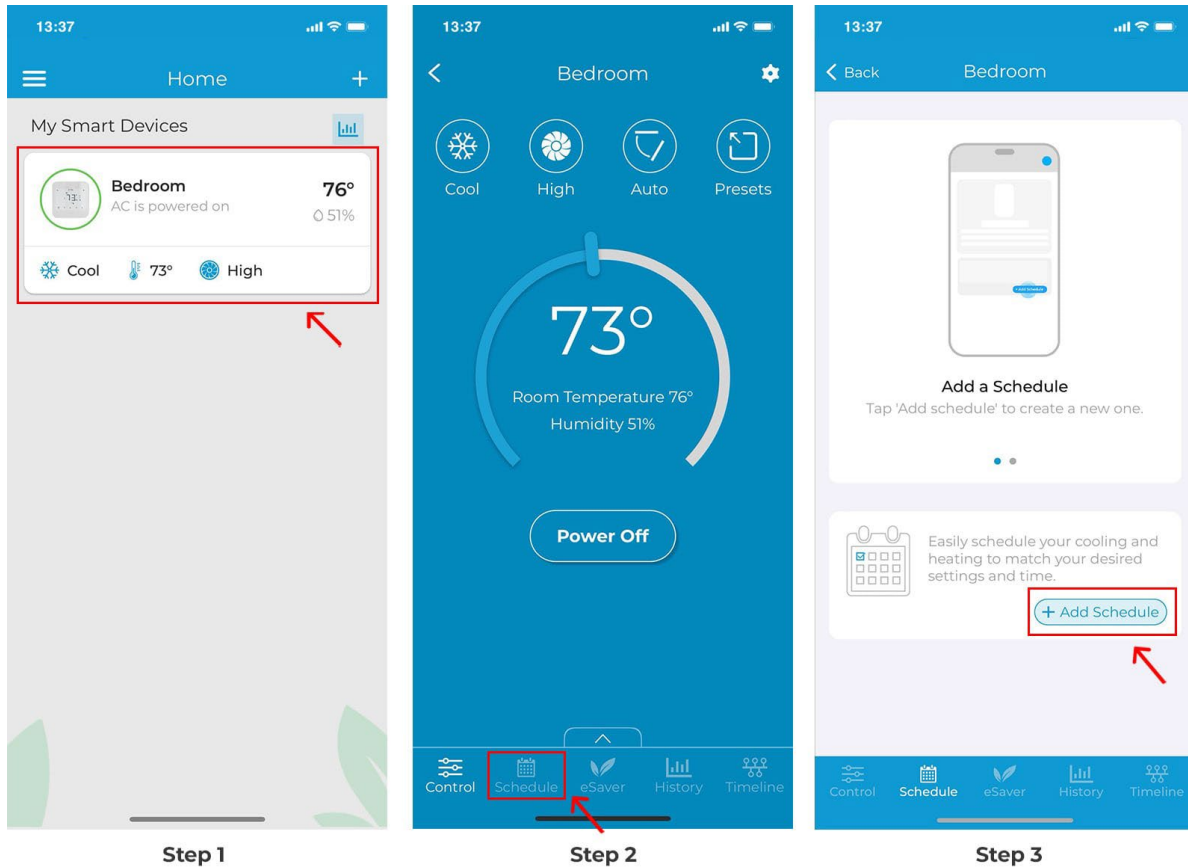
Step 4A: Setting up Schedules for Your Heating and Cooling

1. Setting up a Custom Schedule

Step 1: On the Home screen, tap on the Air-Conditioner / Heat Pump you want to schedule.

Step 2: Tap on 'Schedule' in the navigation bar.

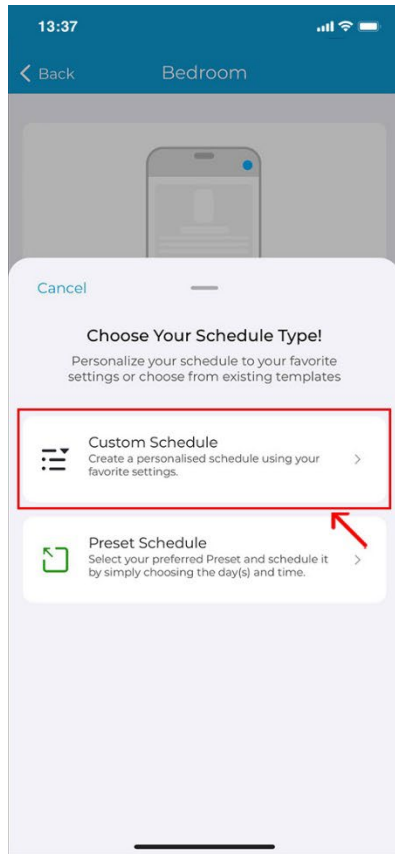
Step 3: Tap on '+ Add Schedule'.



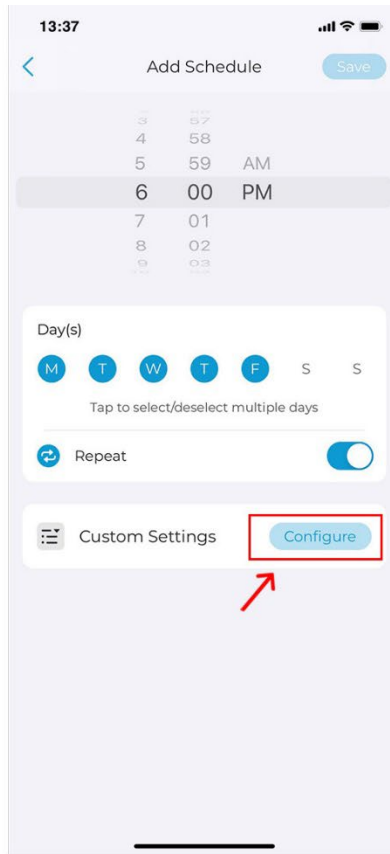
Step 4: Tap on 'Custom Schedule'.

Step 5: Select the time/days you want to set the schedule for and choose whether you want to set it up as a repeat schedule. Tap on 'Configure'.

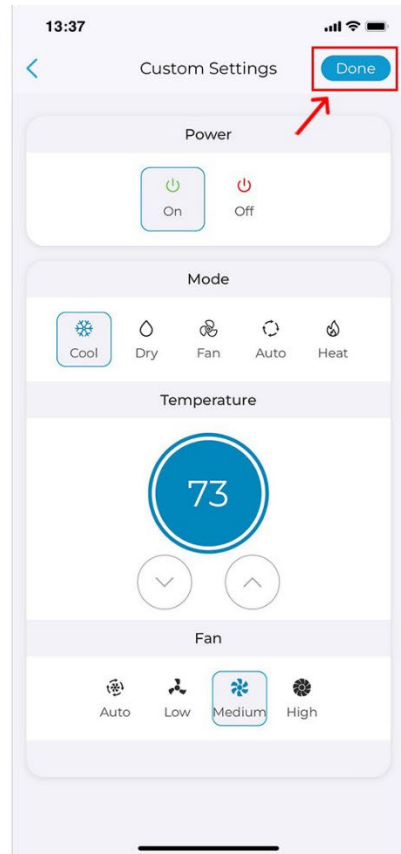
Step 6: Select the power state, mode, temperature, and fan speed of your choice and tap on 'Done'.



Step 4



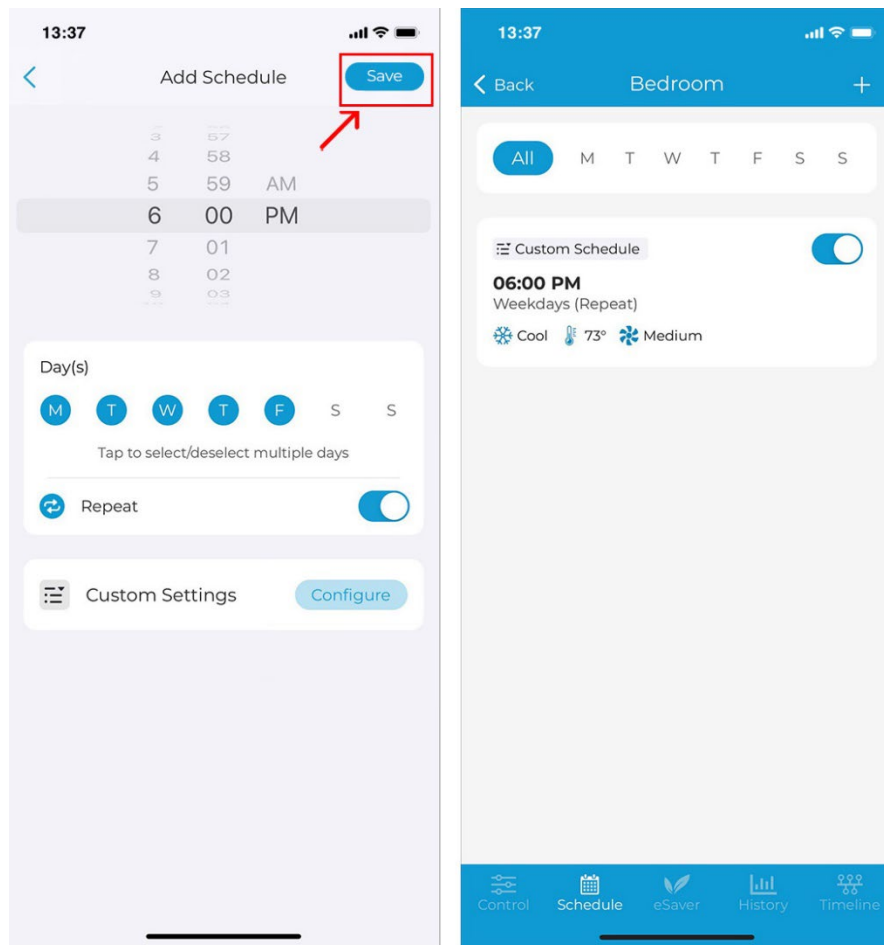
Step 5



Step 6

Step 7: Tap on 'Save' to set up the schedule.

Once the schedule is set, it will appear on the schedule tab. You can turn it On/Off by toggling the slider against the schedule.



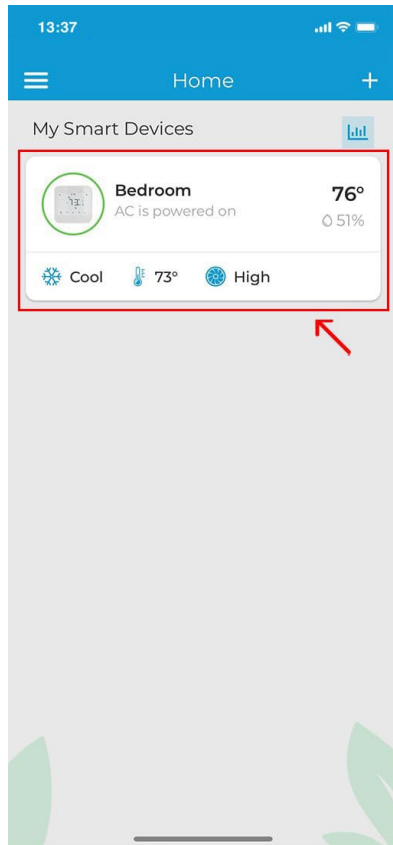
Step 7

2. Scheduling a Preset

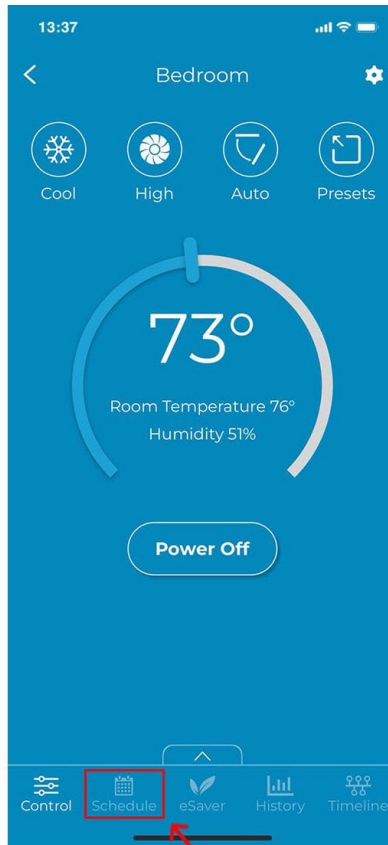
Step 1: On the Home screen, tap on the Air-Conditioner / Heat Pump you want to schedule.

Step 2: Tap on 'Schedule' in the navigation bar.

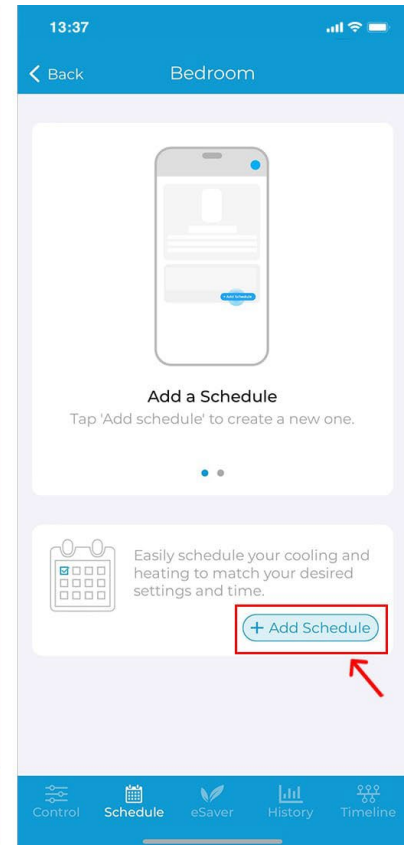
Step 3: Tap on '+ Add Schedule'.



Step 1



Step 2

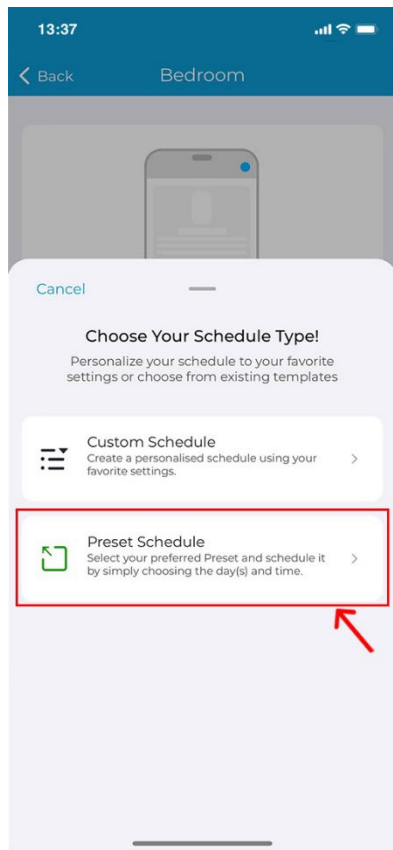


Step 3

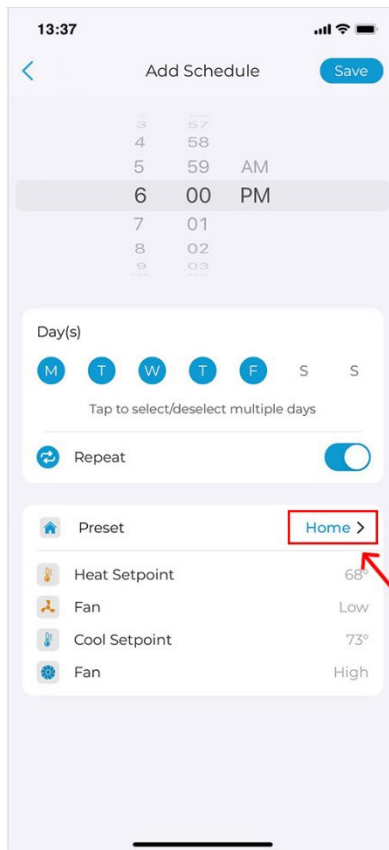
Step 4: Tap on 'Preset Schedule'.

Step 5: Select the time/days you want to set the schedule for choose whether you want to set it as a repeat schedule.

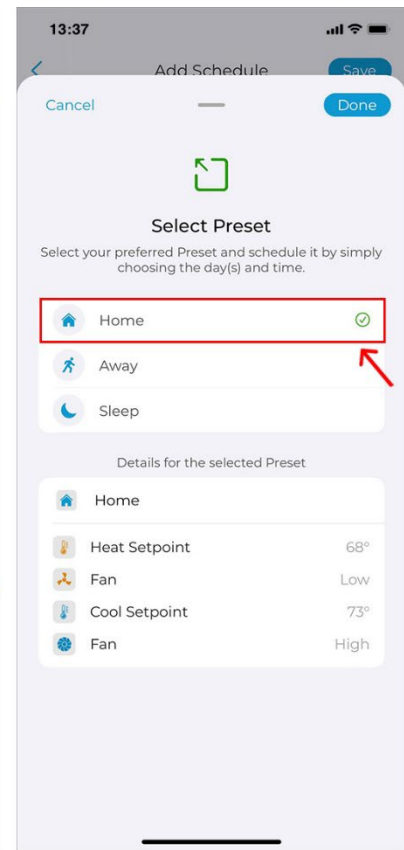
Step 6: Select the Preset you want to schedule.



Step 4

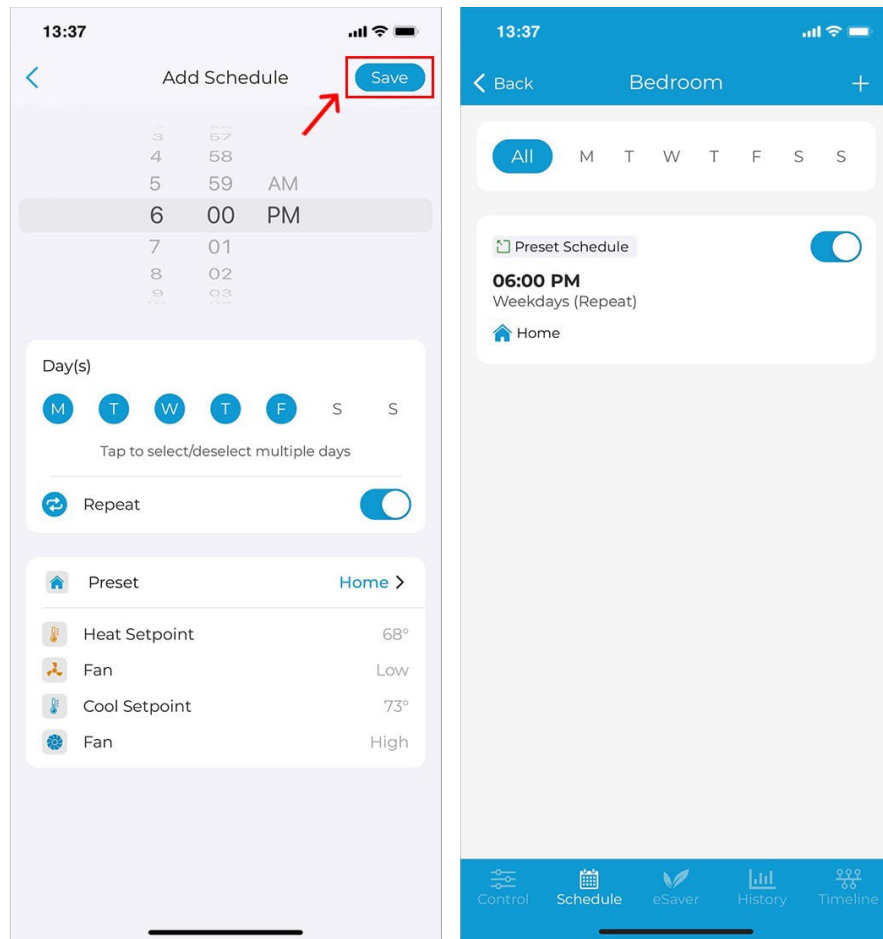


Step 5



Step 6

Step 7: Tap on 'Save' to set up the schedule.



Step 7

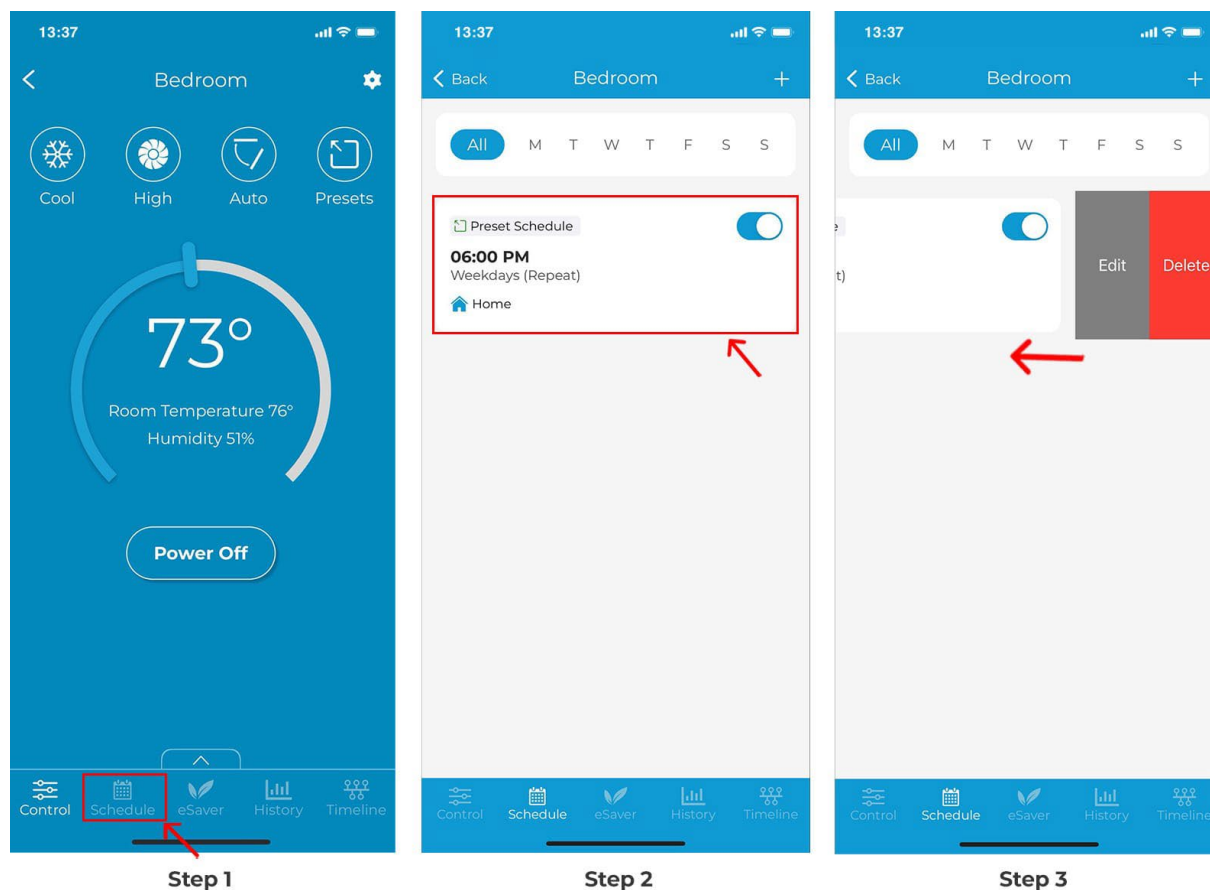
3. Deleting/Editing a schedule

Step 1: From the device control screen, tap on 'Schedule' in the navigation bar.

Step 2: In the 'Schedule' tab, you will see all your set schedules.

Step 3: Swipe left on the schedule you want to edit or delete until both options for Edit/Delete appear.

Choose your desired option and proceed.



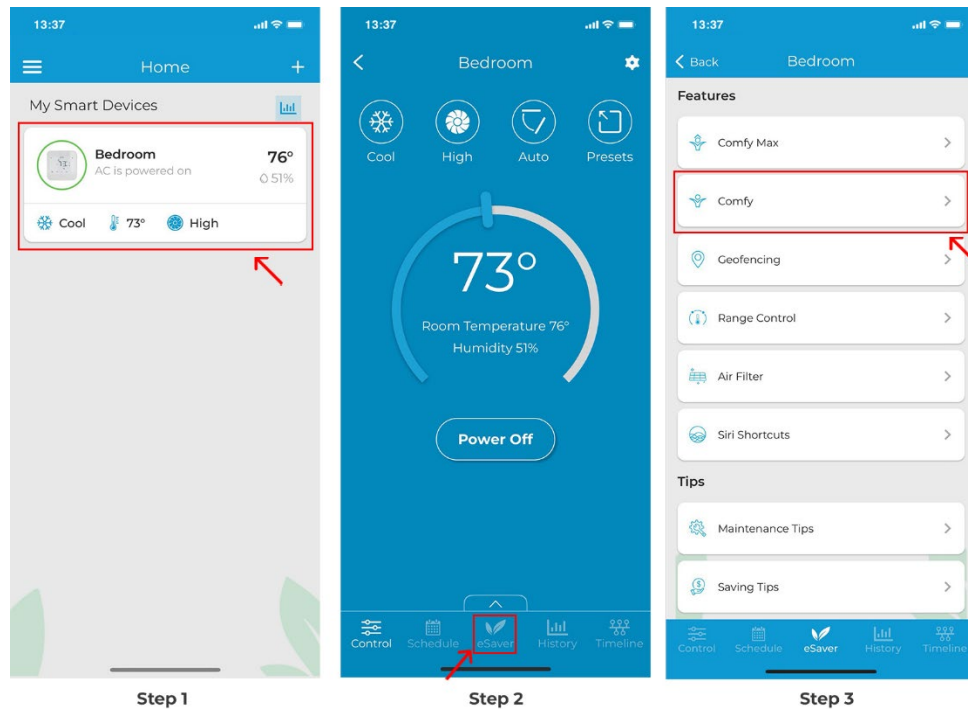
Step 4B: Setting up Comfy Temperature Mode (Automatically change your AC settings if the room temperature goes above or falls below a pre-set value)

You can set up comfy temperature mode for your air conditioner/heat pump by performing these steps via Cielo Home app:

Step 1: On the Home screen, tap on the air conditioner/heat pump you want to set comfy temperature mode on.

Step 2: Tap on 'eSaver' in the navigation bar.

Step 3: Tap on 'Comfy'.



Step 4: Tap on 'Add Template' under the Comfy Temperature heading.

Step 5: Select what actions to perform if the temperature falls below or goes above the set range, e.g. turning the AC off or on, changing its mode, temperature, fan speed, and swing position to help it get back into the preferred temperature range. Add a name for this template and tap on 'Done'.

Step 6: Your Comfy settings are now saved. It is disabled by default. You can turn Comfy 'On' from the toggle next to the name of the Comfy template. Once the device triggers the defined comfy temperature mode actions, you will get a notification in your app timeline.

13:37



< Back

Bedroom

Temperature



Comfy Temperature

Set your rules that trigger the system based on indoor temperature to ensure optimized comfort

+ Add Template

Humidity



Comfy Humidity

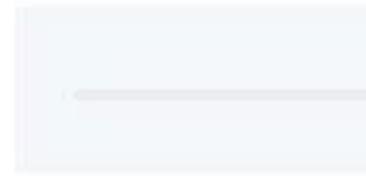
Set your rules that trigger the system based on indoor humidity to ensure optimized comfort

+ Add Template

13:37



Choose your preferred



Temperature falls below

Temperature goes above

Mode

Setpoint

Fan

Swing

Name

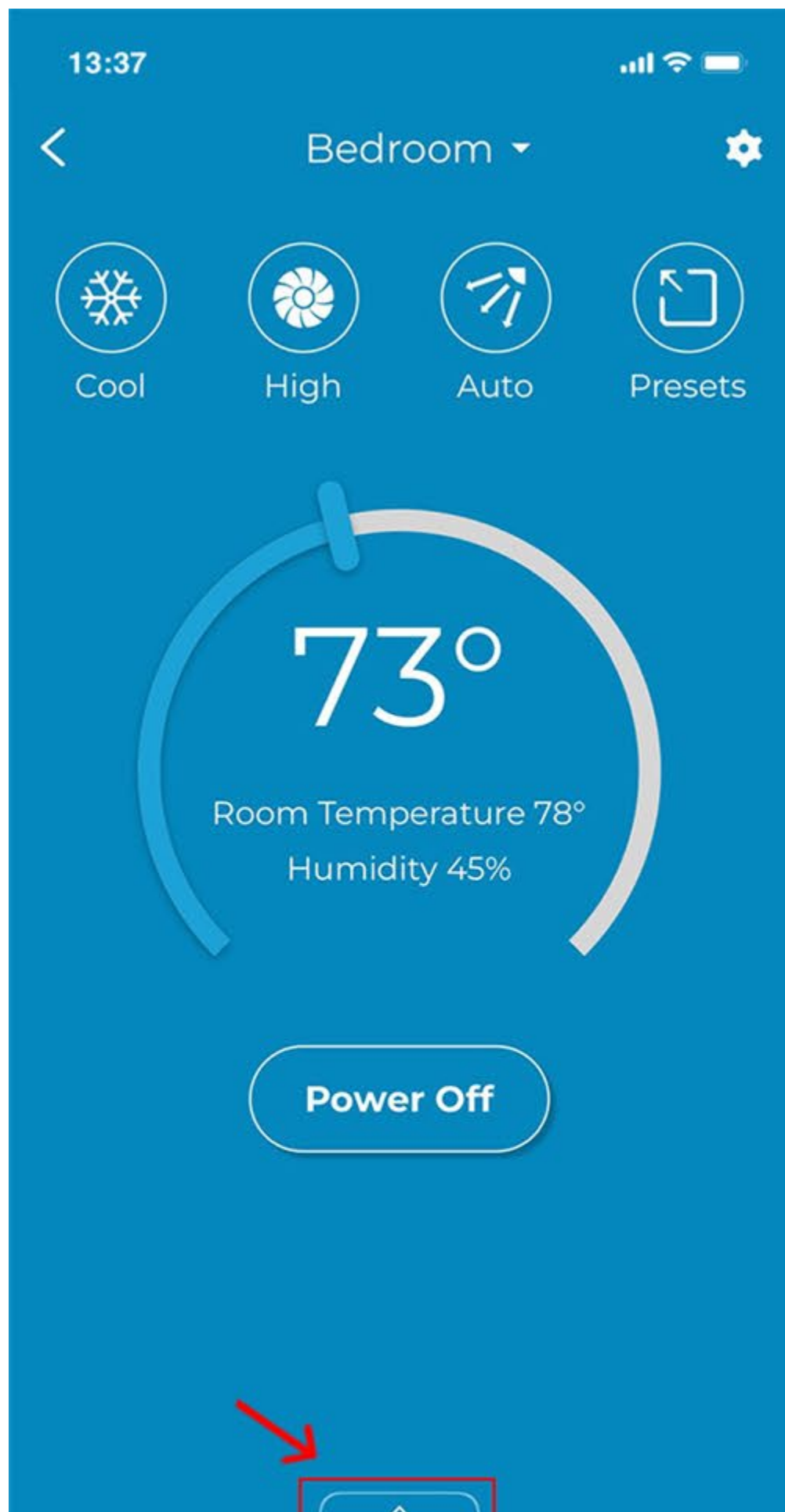
Note: You can set up multiple Comfy settings through Comfy templates. Each of the templates can be turned 'On' or 'Off' from the toggle next to its name. You can have a different Comfy Mode for the morning, a different mode for the afternoon, and so on.

Step 7: You can turn Comfy Mode On/Off from the app control screen. Tap on the 'Up' arrow icon at the bottom of the control screen.

Step 8: In the pop-up navigation bar, tap on 'Comfy' to toggle it On or Off. The greyed-out icon shows that it is currently Off.

Step 9: Select the desired Comfy Mode from the list of available Comfy settings. In this case, 'Temperature'.

Step 10: Comfy Mode is now active, and the Comfy icon will turn white. It is now turned 'On'.



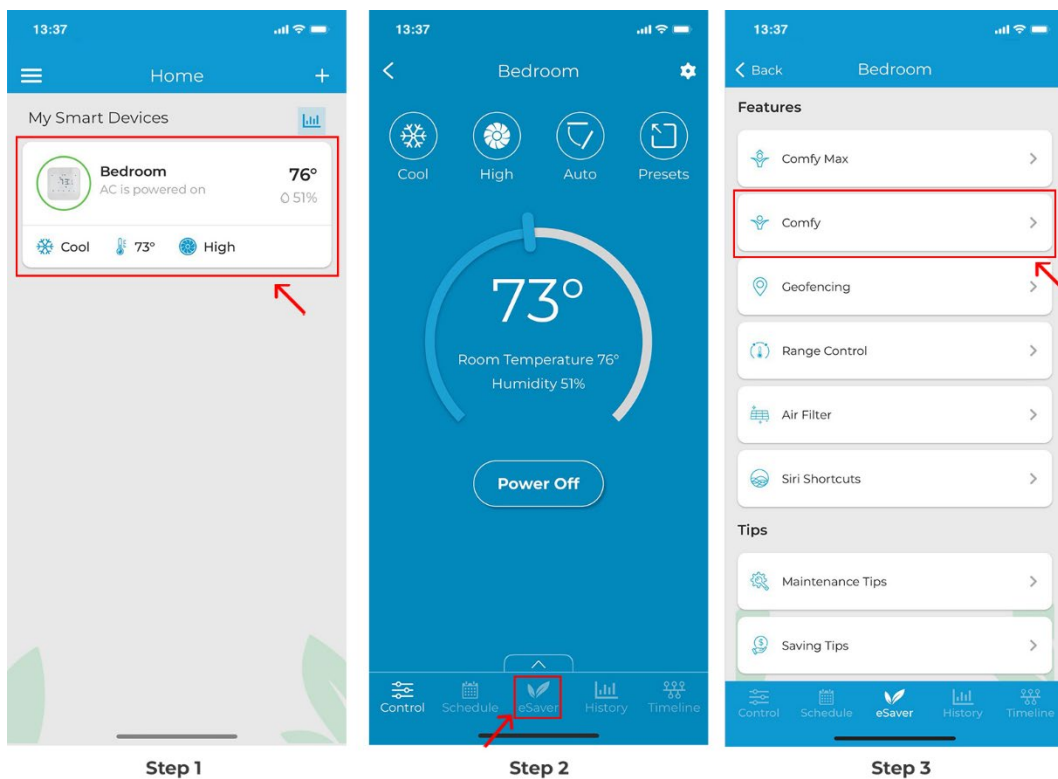
Step 4C: Setting up Comfy Humidity Mode (Automatically Change Your AC Settings if Room Humidity Goes Above or Falls Below a Pre-set Value)

You can set up comfy humidity mode for your air conditioner/heat pump by performing these steps via Cielo Home app:

Step 1: On the Home screen, tap on the air conditioner/heat pump you want to set comfy humidity mode on.

Step 2: Tap on 'eSaver' in the navigation bar.

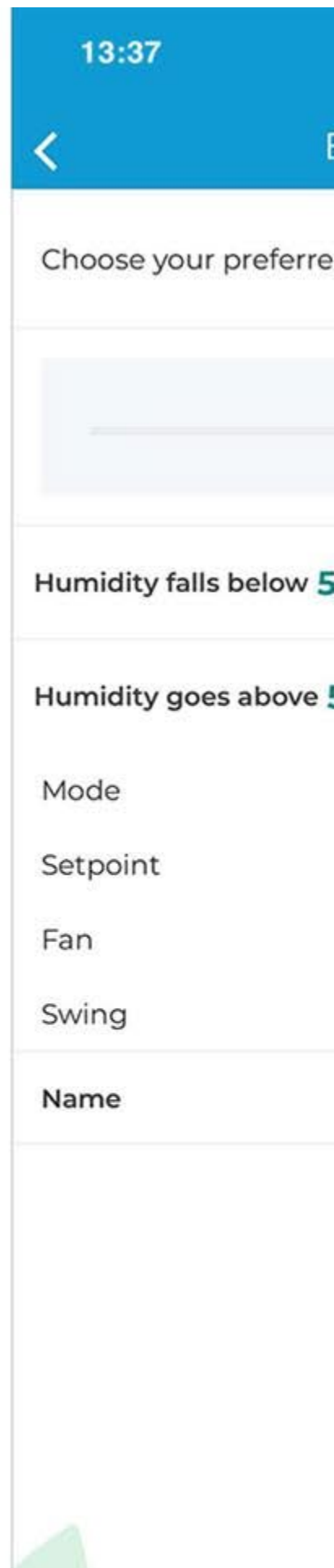
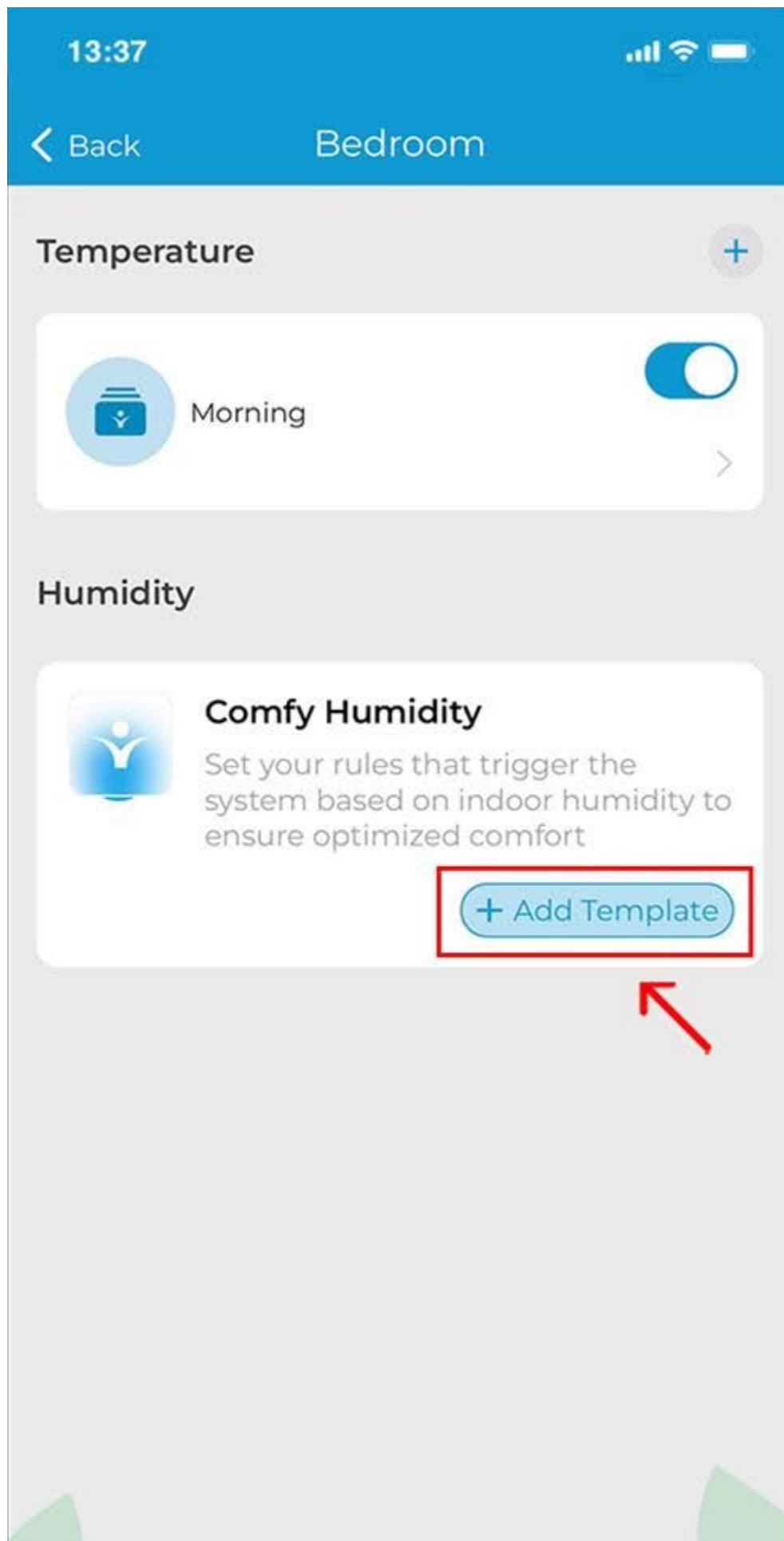
Step 3: Tap on 'Comfy'.



Step 4: Tap on 'Add Template' to set up a Comfy Humidity template.

Step 5: Select what actions to perform if the humidity falls below or goes above the set range e.g. turning the AC off or on, changing its mode, temperature, and fan speed helping it get back into the preferred humidity range. Add a name for this template and tap on 'Done'.

Step 6: 'Comfy Humidity' is now set. You can turn Comfy Mode 'On' or 'Off' from the toggle next to the name of the Comfy Mode. Once the device triggers the defined comfy humidity mode actions, you will get a notification in your app timeline.

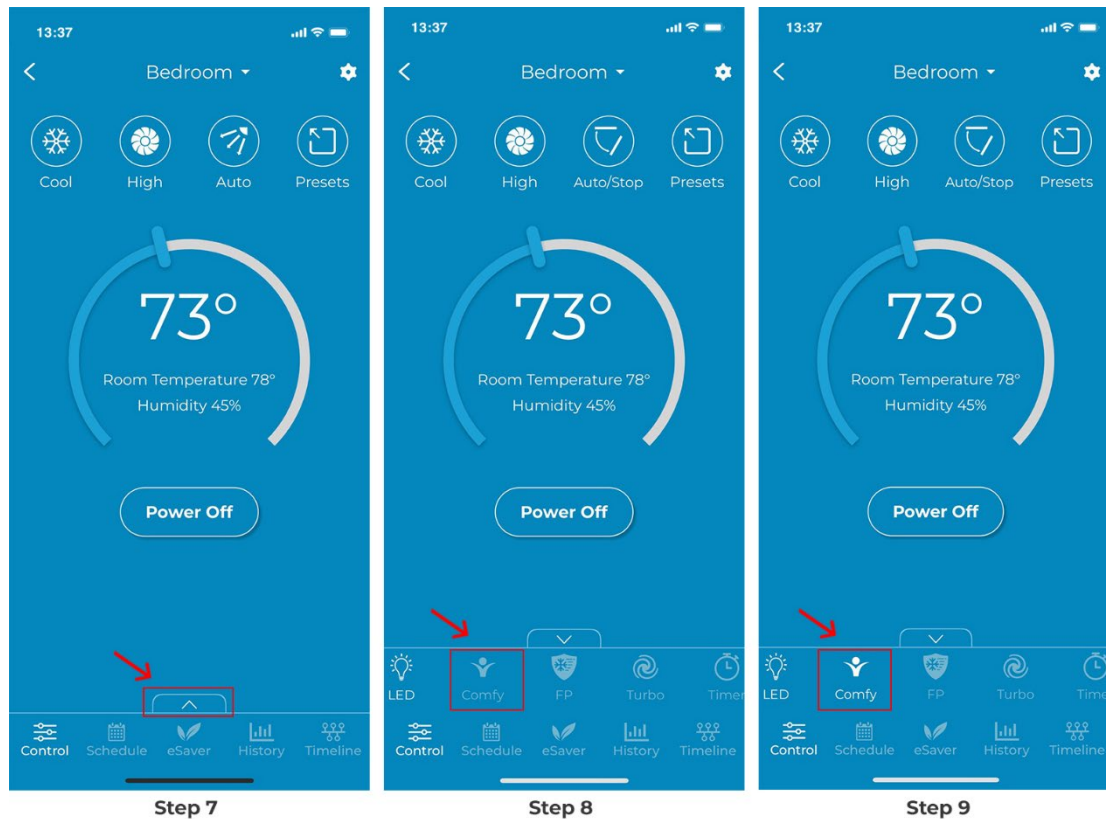


You can turn Comfy Mode On/Off from the app control screen.

Step 7: Tap on the 'Up' arrow icon at the bottom of the control screen.

Step 8: On the pop-up navigation bar, tap on 'Comfy' to toggle it On or Off. Currently, it is turned 'Off', shown by the greyed-out icon.

Step 9: To turn it 'On', tap on the Comfy icon, and it will turn white. It is now turned 'On'.



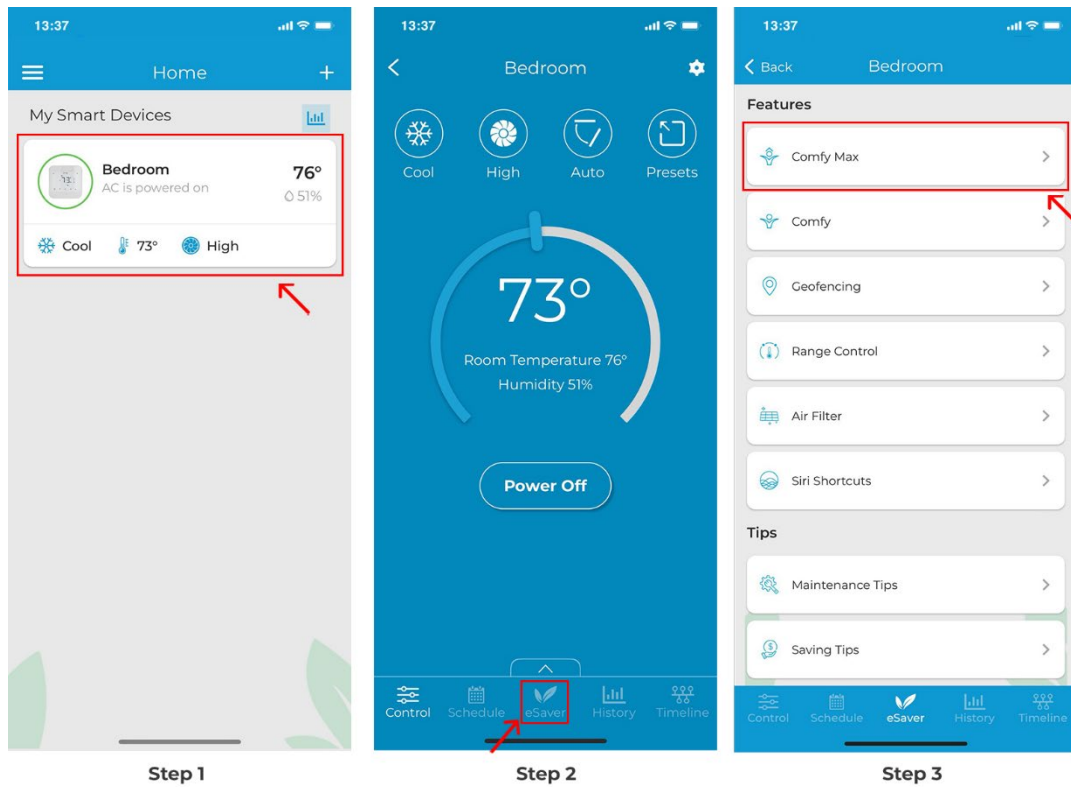
Step 4D: Setting up Comfy Max

You can set up Comfy Max for your air conditioner/heat pump by performing these steps via Cielo Home app:

Step 1: On the Home screen, tap on the air conditioner/heat pump you want to set comfy max on.

Step 2: Tap on 'eSaver' in the navigation bar.

Step 3: Tap on 'Comfy Max'.



Step 4: Tap on 'Add Template' to set up Comfy Max.

Step 5: Choose your preferred temperature window, and select whether you want the fan to run after your desired cooling temperature is reached. Add a name for this template and tap on 'Done'.

Step 6: Your Comfy Max settings are now saved. You can turn Comfy Max 'On' from the toggle next to the name of the Comfy Max template.

13:37



< Back

Bedroom



Multiple Templates

Easily add and switch between multiple templates



Comfy Max takes various parameters into account and works intelligently to maintain your ideal room temperature

+ Add Template



13:37

< Back

Choose your preferred

Comfy Max intelligently
preferred room

72



Enabling Breez Flow
the Cool Set



Breez Flow

Choose a suitable

Name

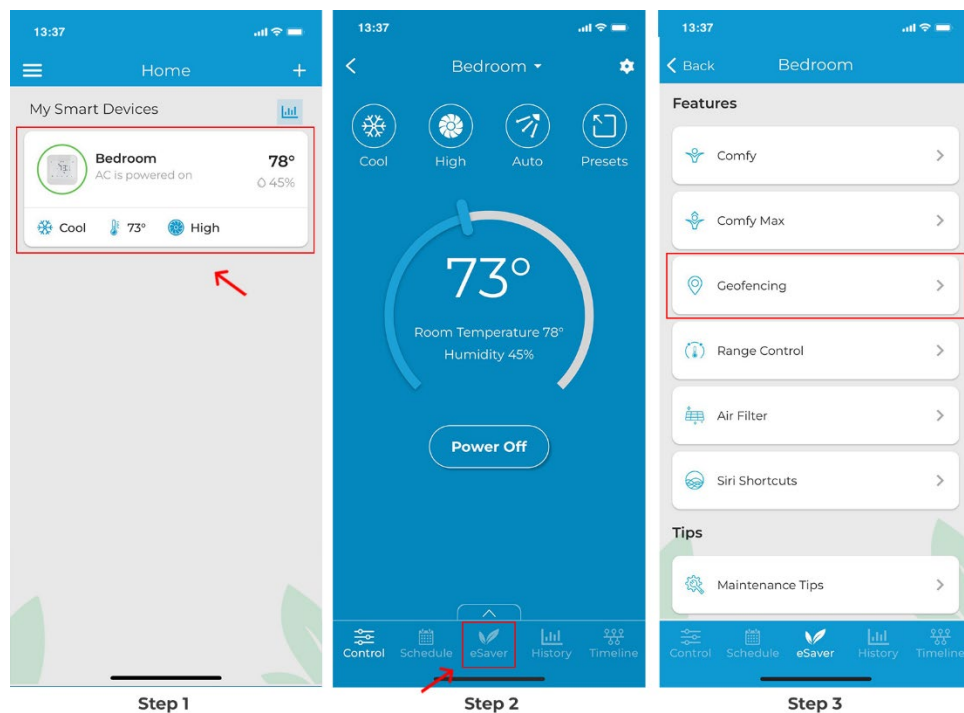
Step 4E: Enabling Location Control (Turn Your AC on Before You Arrive and Turn It off After You Have Left the Pre-set Location)

You can configure location-based control for your Air-Conditioner/Heat Pump by performing these steps via the Cielo Home app:

Step 1: On the Home screen, tap on the Air-Conditioner/Heat Pump you want to control through location controls.

Step 2: Tap on 'eSaver' in the navigation bar.

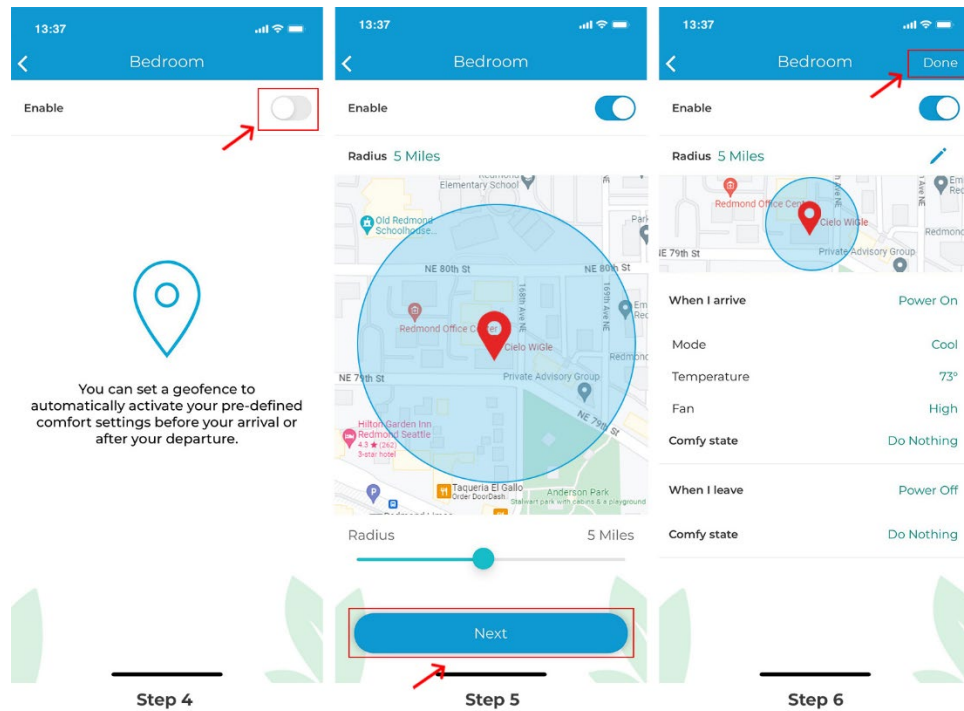
Step 3: Tap on 'Geofencing'.



Step 4: Toggle the slider to enable Location Control, as shown in the red box.

Step 5: You will see your current location on the map. Set a Geo-Fence range for your Air-Conditioner/Heat Pump between 1 - 10 Miles using the slider. Entering or exiting this range will trigger the Air-Conditioner / Heat Pump ON/ OFF. Tap on 'Next'.

Step 6: Select your desired AC settings to be performed when you enter or exit the pre-set location and tap on 'Done'. Once location controls are triggered, you will get a notification in your app timeline.



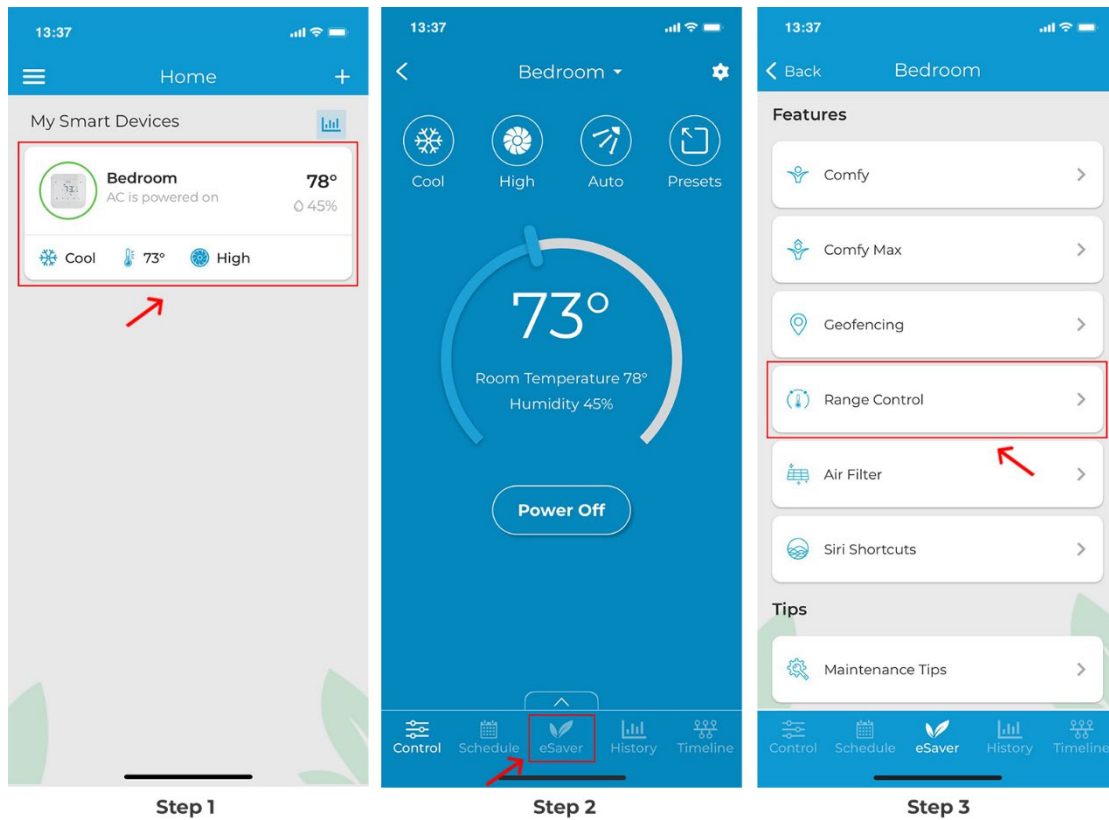
Step 4F: Setting up Temperature Range Control (Set a minimum and maximum temperature value so that your AC runs within that range)

You can set up temperature range control for your Air-Conditioner / Heat Pump by performing these steps via Cielo Home app:

Step 1: On the Home screen, tap on the Air-Conditioner / Heat Pump you want to set temperature range control on.

Step 2: Tap on 'eSaver' in the navigation bar.

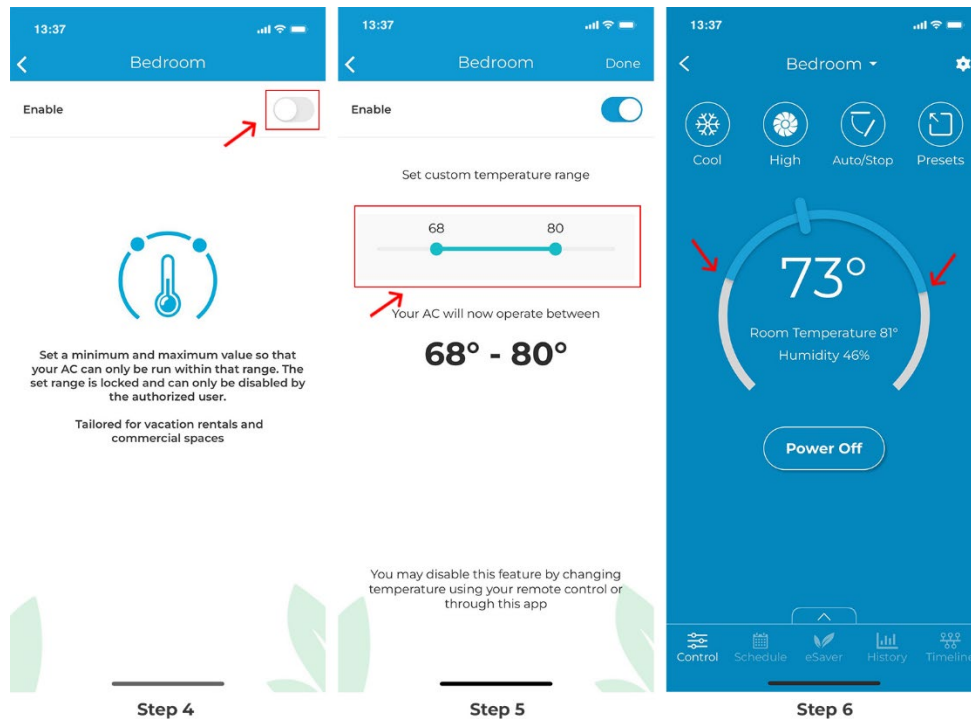
Step 3: Tap on 'Range Control'.



Step 4: Toggle the slider to enable Range Control, as shown in the red box.

Step 5: Choose your preferred temperature range to operate the AC in. Tap on 'Done'.

Step 6: Now the device control screen temperature slider will be restricted to the temperature range specified. The white region on the temperature slider is inaccessible.



Note: Setting a temperature range will disable all schedules, location controls, and comfy mode in case the selected temperature range conflicts with the previously set values. These modes can be set later again within the specified temperature range. If you have a Preset outside the set temperature range, you'll have to edit the preset in order to enable temperature range control.

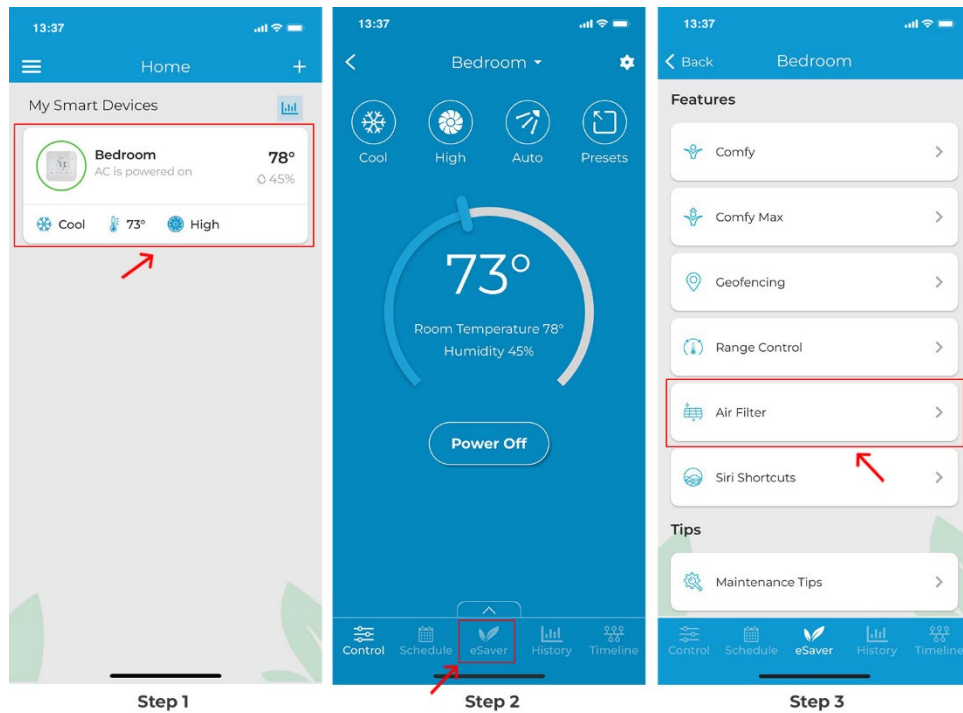
Step 4G: Checking Your AC's Air Filter Status

You can check the live air filter status of your Air-Conditioner/Heat Pump. Simply follow the steps listed below:

Step 1: On the Home screen, tap on the Air-Conditioner/Heat Pump you want to check the air filter status for.

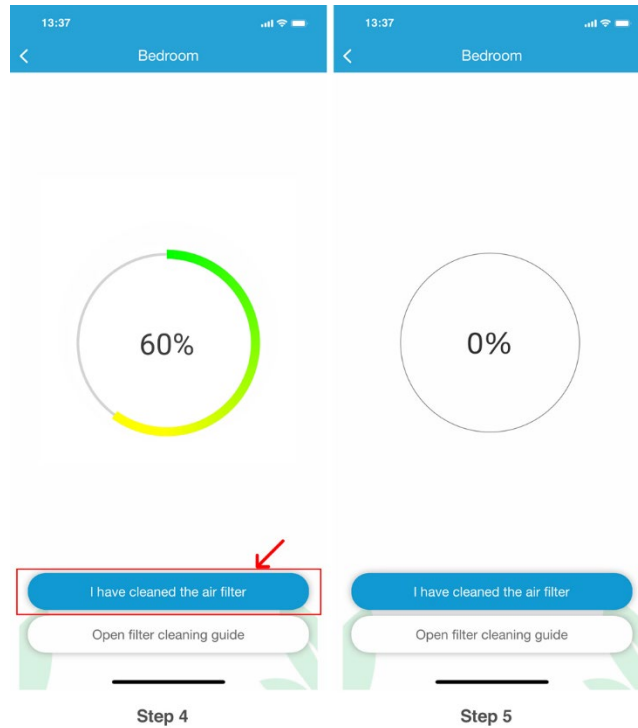
Step 2: Tap on 'eSaver' in the navigation bar.

Step 3: Tap on 'Air Filter'.



Step 4: You will see your current air filter status of the AC being used with the Device since registration (or since the last cleaning). When the range is about to fill up, manually remove the AC's air filter and clean it. Once done, place the filter back into the AC. Tap on 'I have cleaned the air filter'.

Step 5: Your filter status has now begun a new cycle.

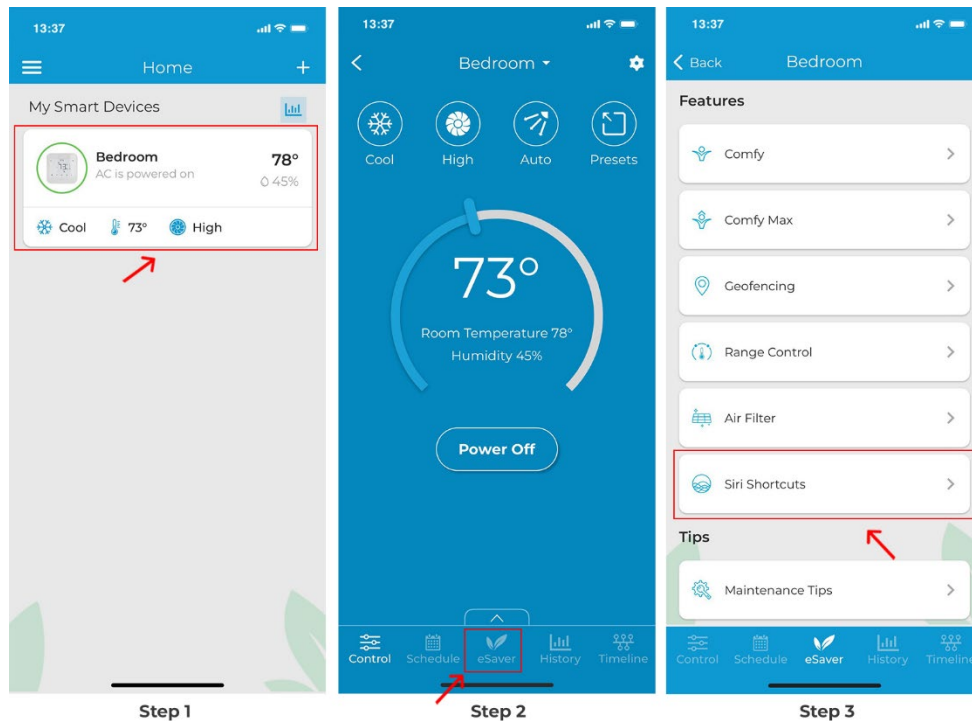


Step 4H: Adding Siri Shortcuts to Cielo Home

Step 1: On the Home screen, tap on the Air-Conditioner/Heat Pump you want to add Siri Shortcuts for.

Step 2: Tap on 'eSaver' in the navigation bar.

Step 3: Tap on 'Siri Shortcuts'.

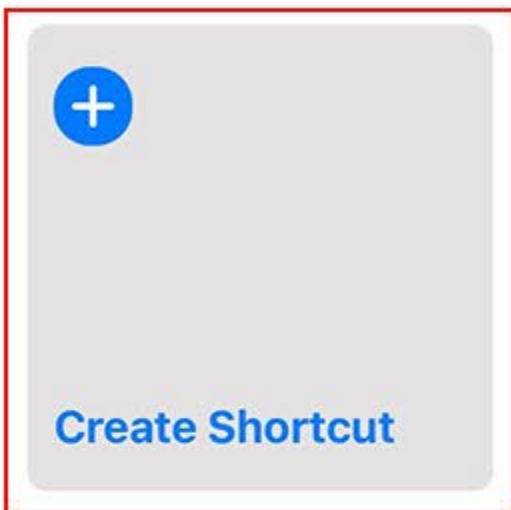


Step 4: Tap on 'Create Shortcut' to make a new Siri Shortcut.

Step 5: Choose whether you want to add "Preset" as a shortcut or select "Custom" and enter the desired AC settings. You can set the AC operating mode, temperature set point, and fan speed. Tap on 'Done'.

Step 6: Next, enter the phrase you want the Shortcut to be activated on. In this example, 'Cool The Room'. Tap on 'Add to Siri'.

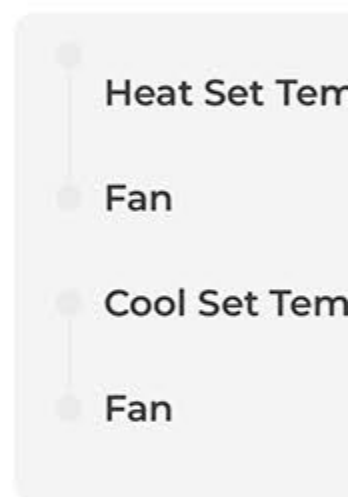
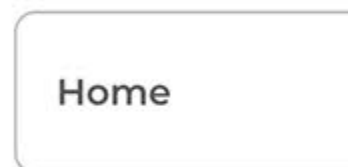
Step 7: All your currently active Siri Shortcuts will now be displayed. In this example, when you say to Siri 'Cool The Room', the AC will turn on at 73 degrees in cool mode at high fan speed.



Shortcut type



Select the Preset

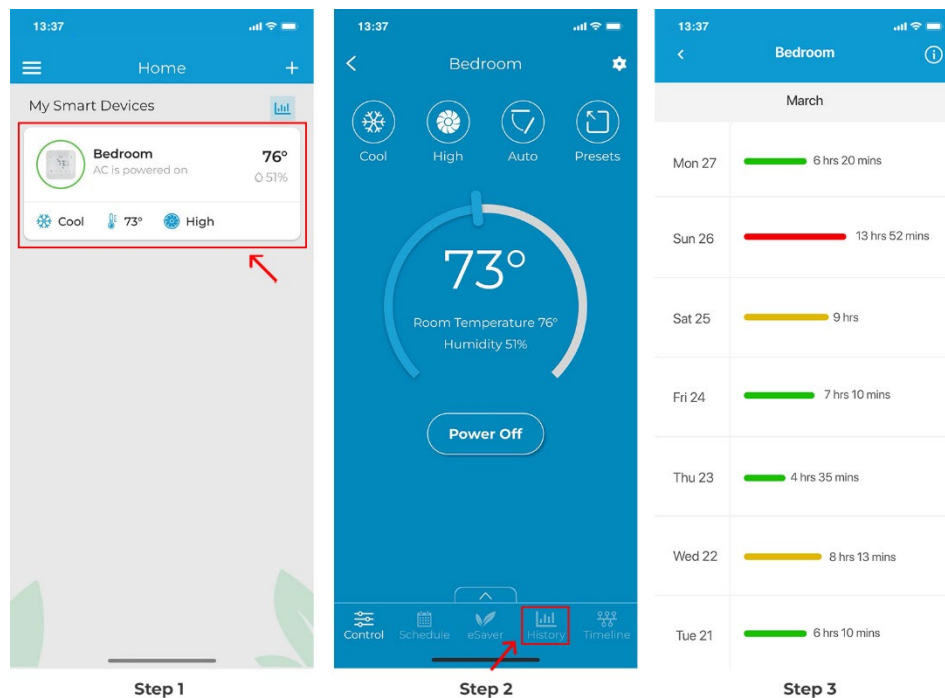


Step 4I: Checking Usage History

Step 1: On the Home screen, tap on the Air-Conditioner/Heat Pump you want to check Usage history for.

Step 2: On the Control screen, Tap on 'History'.

Step 3: Your 30-day usage summary should appear on the screen. Tap on any day to learn more details about your detailed usage history.

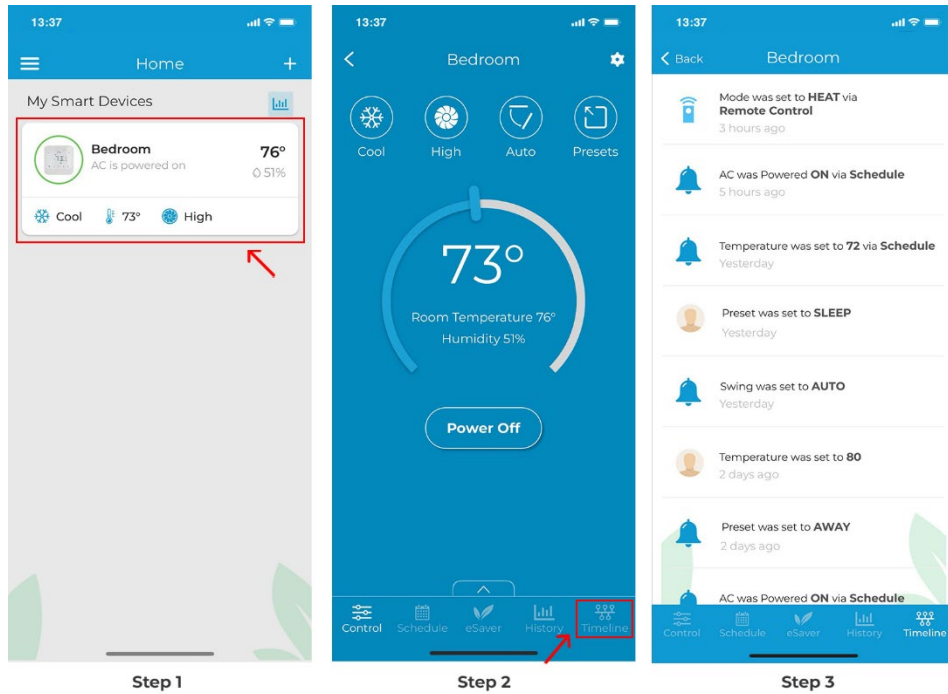


Step 4J: Checking Timeline of Actions

Step 1: On the Home screen, tap on the Air-Conditioner/Heat Pump you want to check the timeline of.

Step 2: On the Control screen, Tap on 'Timeline'.

Step 3: You'll see a complete list of actions performed over the last 90 days.



Step 4K: Editing a preset

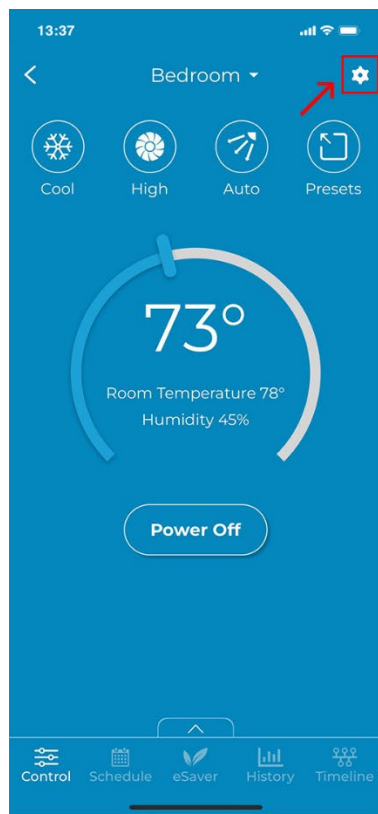
Step 1: From the device control screen, tap on the 'Settings' icon on the top right corner.

Step 2: Tap on 'Preset'.

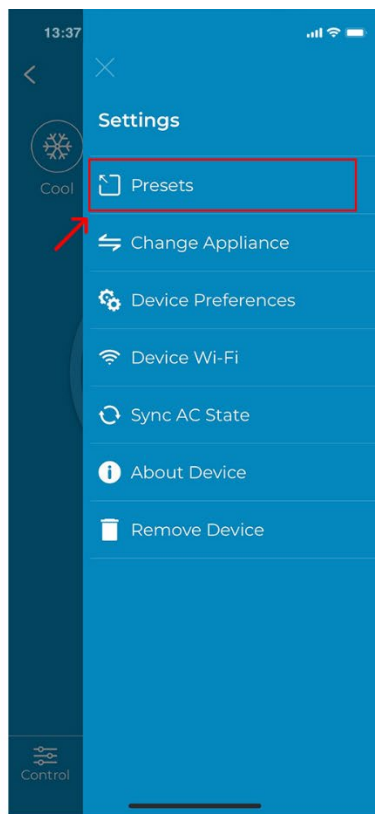
Step 3: Select the Preset you want to edit.

Step 4: Make your desired changes and tap on the 'Done' button.

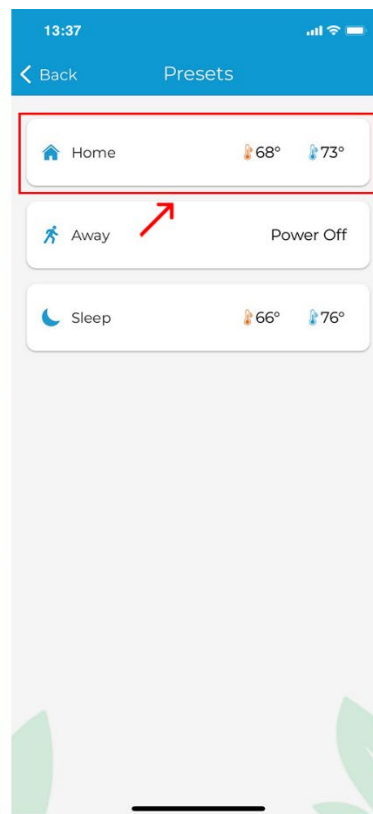
Your Preset has been updated successfully.



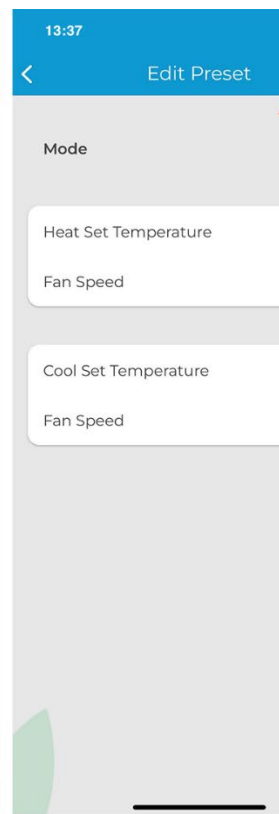
Step 1



Step 2



Step 3



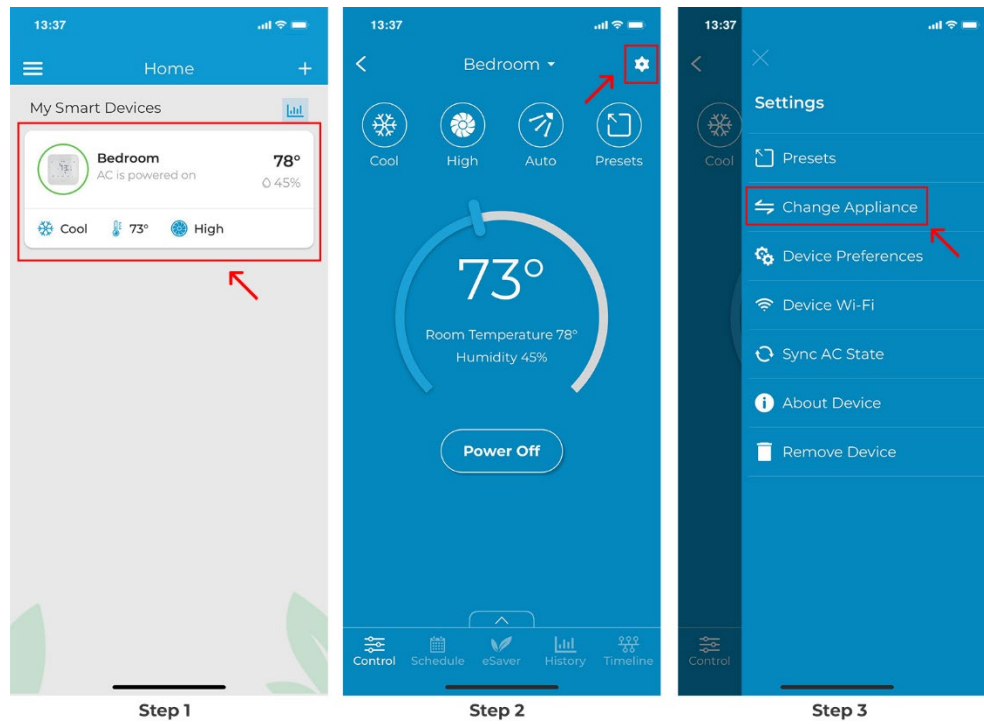
Step 4

Step 4L: Change Appliance (Manufacturer/Model Number)

Step 1: On the Home screen, tap on the Breez Max device you want to change the appliance for.

Step 2: Tap on the 'Settings' icon on the top right.

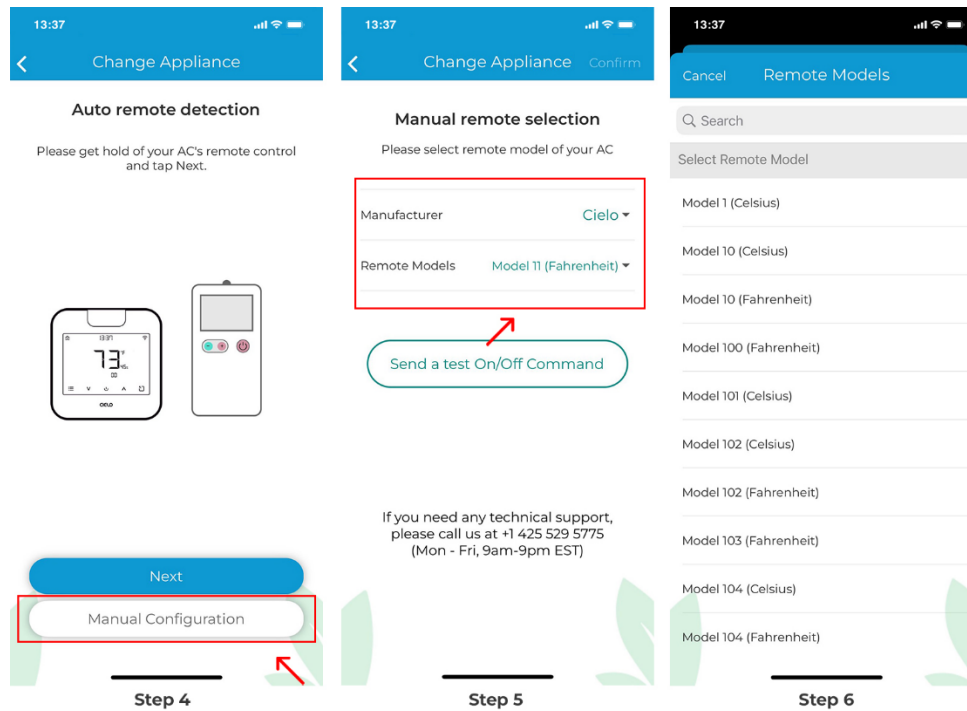
Step 3: Tap on 'Change Appliance'.



Step 4: Tap on 'Manual Configuration'.

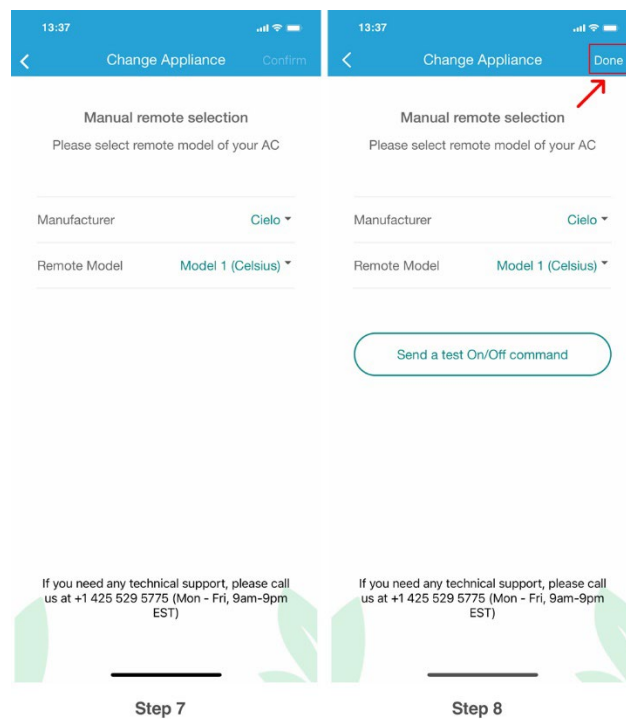
Step 5: Tap on the 'Manufacturer' and select the appropriate AC manufacturer from the drop-down list.

Step 6: Tap on 'Remote Model' and select your remote model from the drop-down list. In this case, 'Model 1 (Celsius)'.



Step 7: Tap on 'Confirm' once you have selected the correct AC manufacturer and remote model.

Step 8: Once selected, send a test On/Off command to your AC. Once the AC accepts the command, tap on 'Done'.

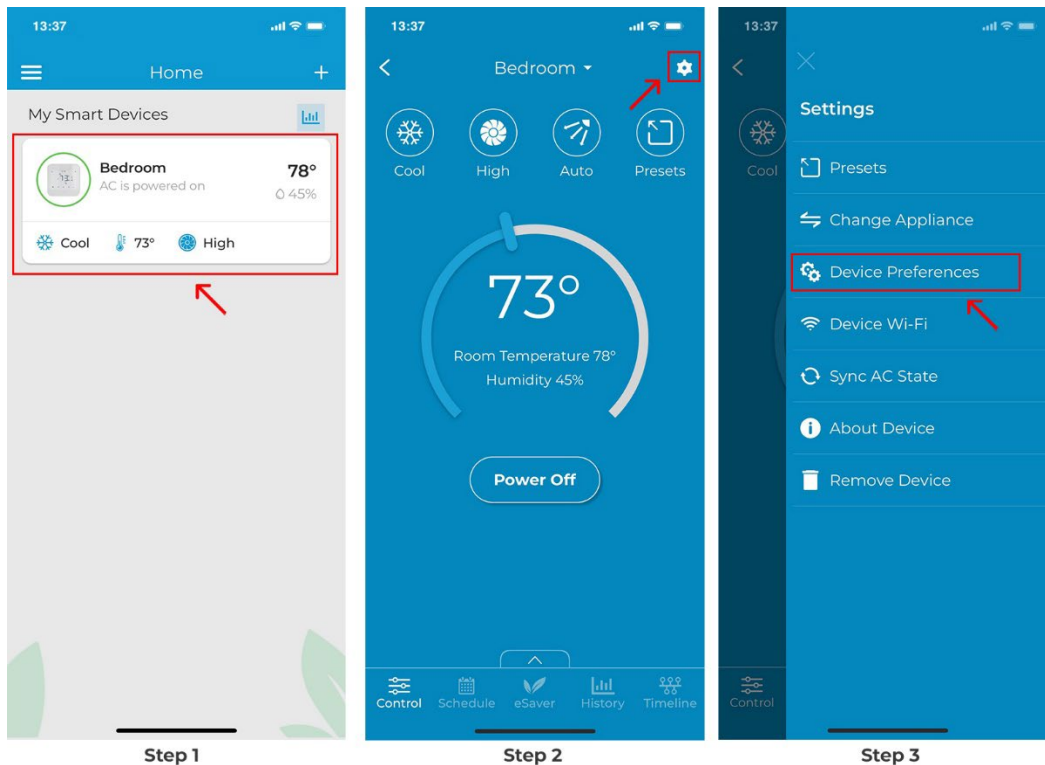


Step 4M: Changing Device Name (e.g. bedroom, lounge etc.)

Step 1: On the Home screen, tap on the Air-Conditioner / Heat Pump you want to change the name of.

Step 2: Tap on the 'Settings' icon on the top right.

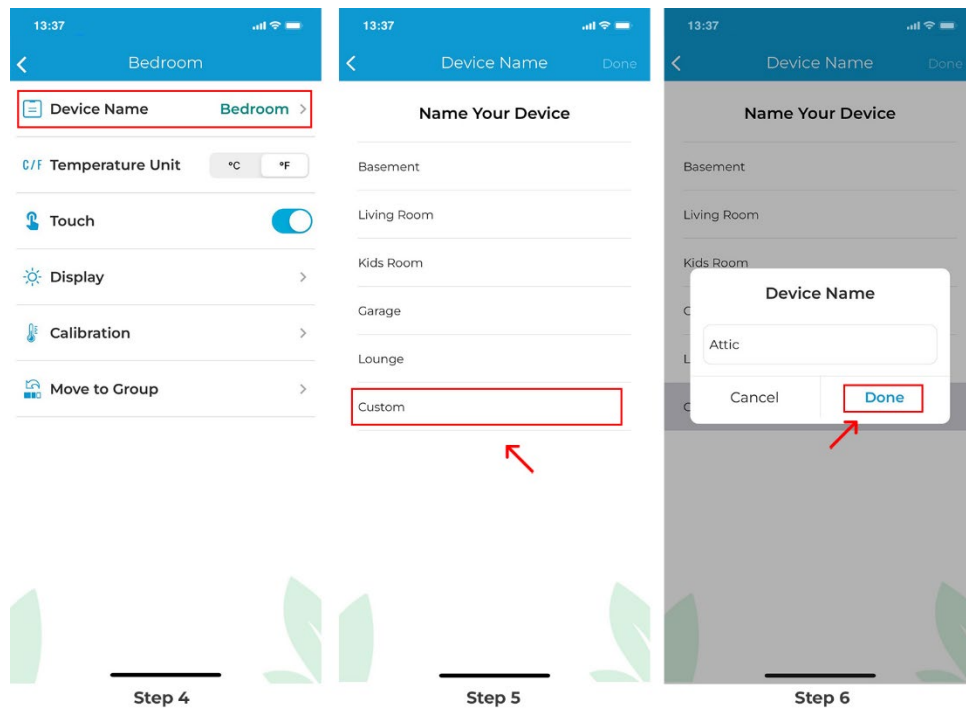
Step 3: Tap on 'Device Preferences'.



Step 4: Tap on 'Device Name'.

Step 5: Select the new name from a list of common names, or type a custom name.

Step 6: Type the new name of the device, and tap on 'Done'. The device name is now changed.

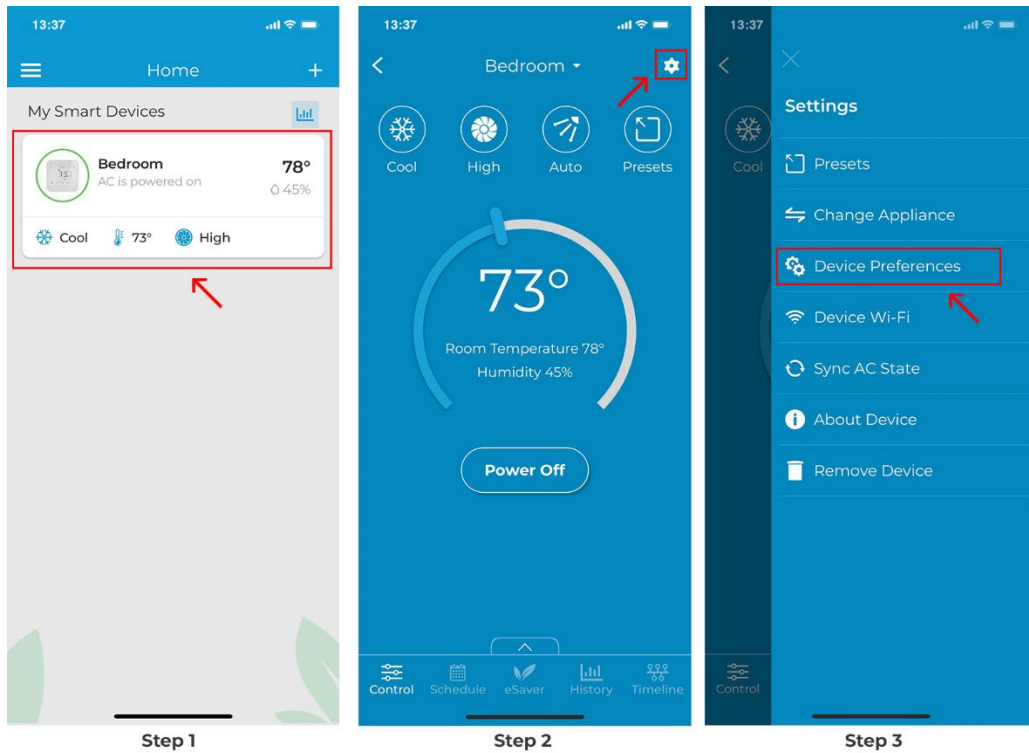


Step 4N: Switch temperature units between Centigrade and Fahrenheit

Step 1: On the Home screen, tap on the Air-Conditioner / Heat Pump you want to change the units of.

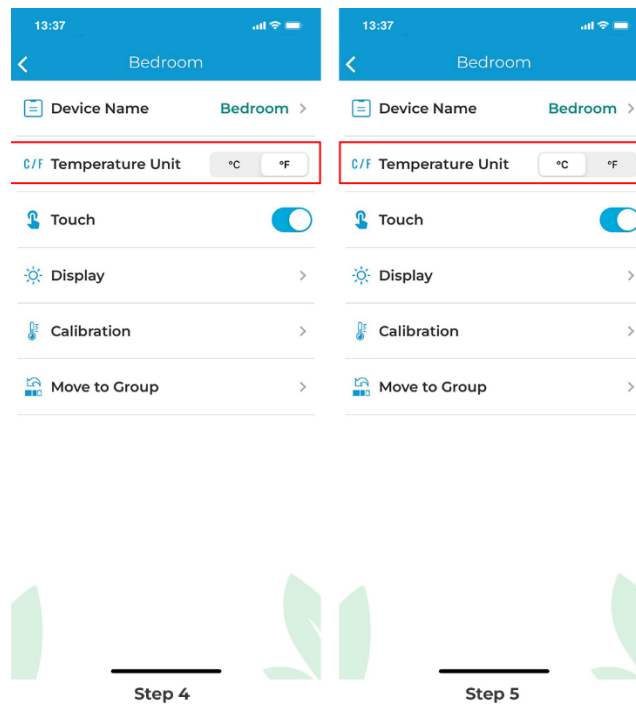
Step 2: Tap on the 'Settings' icon on the top right.

Step 3: Tap on 'Device Preferences'.



Step 4: Tap on the C to F toggle against 'Temperature Unit'.

Step 5: Your device's temperature units are changed successfully from Fahrenheit to Celsius.



Step 40: Enable or disable the touch control function on Breez Max

Step 1: On the Home screen, tap on the Breez Max device you want to lock/unlock.

Step 2: Tap on the 'Settings' icon on the top right.

Step 3: Tap on 'Device Preferences'.

Step 4: Toggle the slider to enable or disable device touch controls.

13:37



Home



My Smart Devices



Bedroom

AC is powered on

78°

45%



Cool



73°



High



13:37



Cool



H

Room

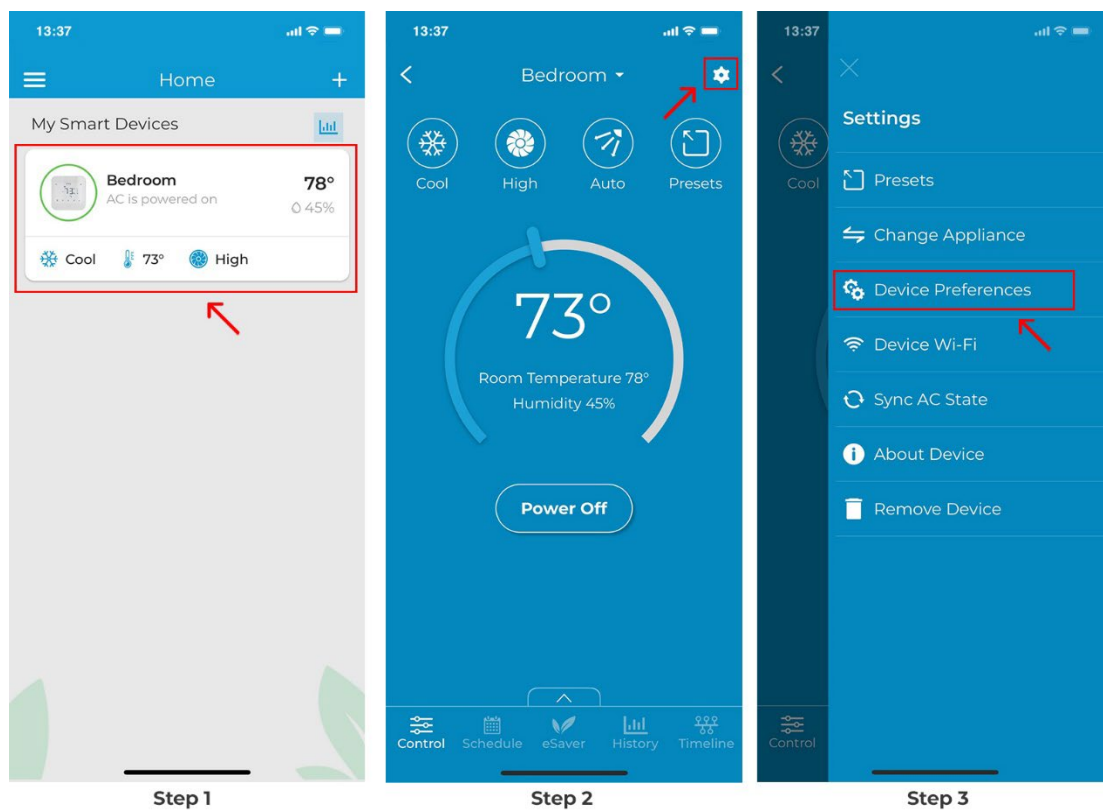
Step 4P: Breez Max Device Display Settings

Switching Breez Max Display ON/OFF or Adjusting the Brightness of the Screen

Step 1: On the Home screen, tap on the Breez Max device you want to turn the display On/Off for.

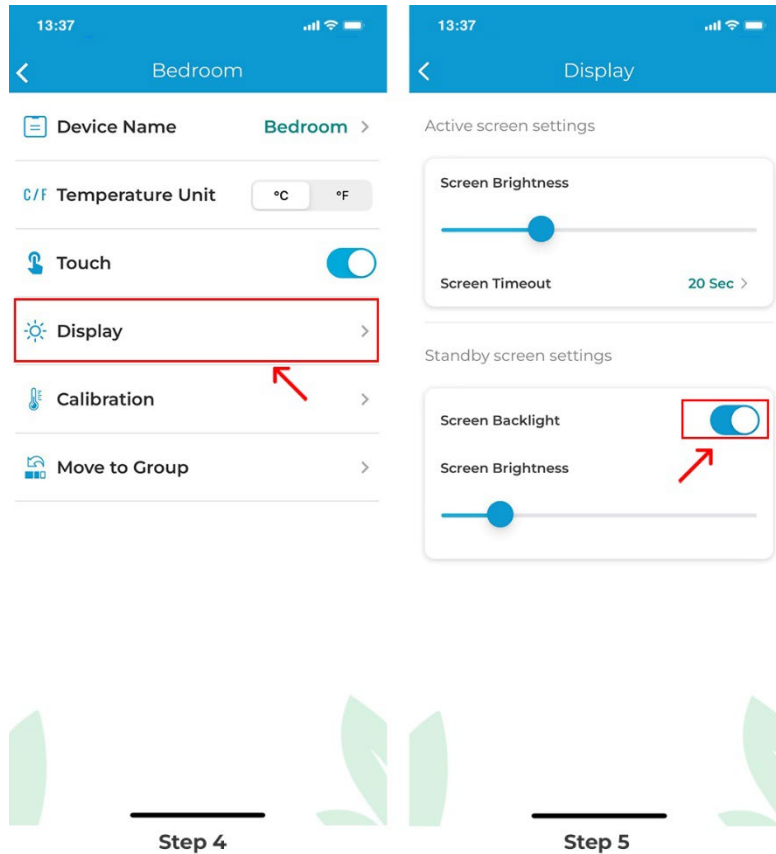
Step 2: Tap on the 'Settings' icon on the top right.

Step 3: Tap on 'Device Preferences'.



Step 4: In Device preferences, tap on 'Display'.

Step 5: Toggle the screen backlight on/off, or adjust the screen brightness as needed.

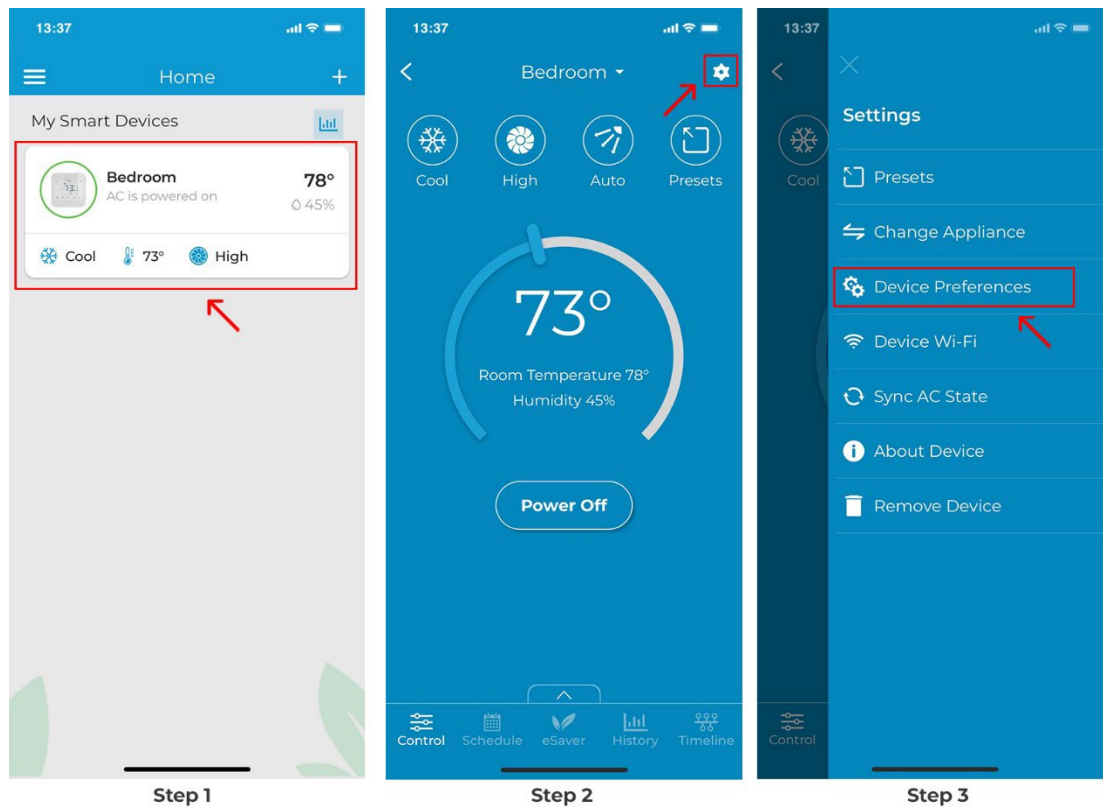


Step 4Q: Calibrate Room Temperature (Shown on Device)

Step 1: On the Home screen, tap on the Air-Conditioner / Heat Pump you want to calibrate.

Step 2: Tap on the 'Settings' icon on the top right.

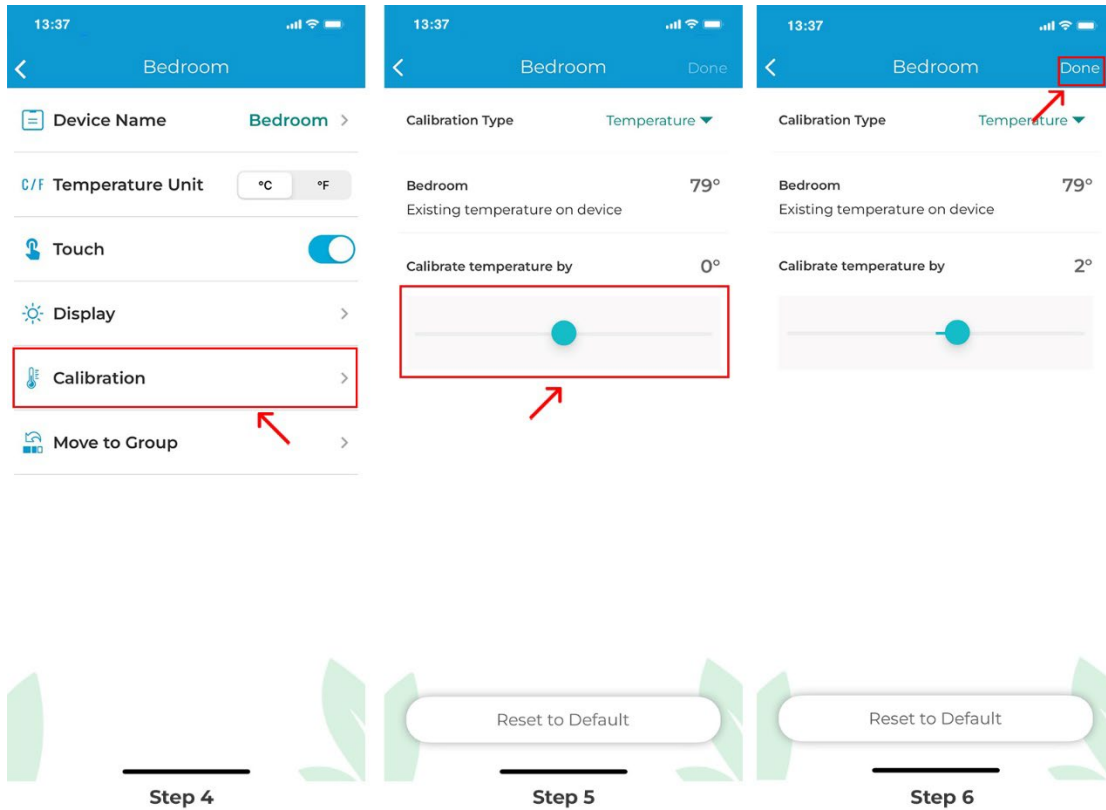
Step 3: Tap on 'Device Preferences'.



Step 4: Tap on 'Calibration'.

Step 5: Adjust the temperature as required.

Step 6: Tap on 'Done'. Your device has now been calibrated.

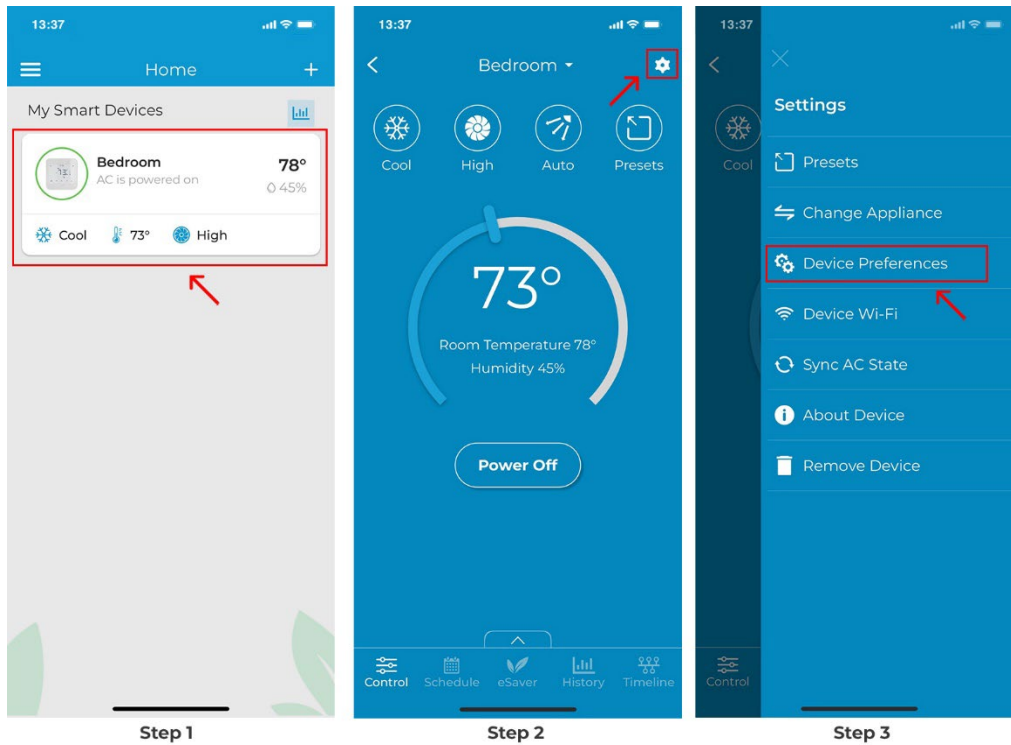


Step 4R: Calibrate Room Humidity (Shown on Device)

Step 1: On the Home screen, tap on the Air-Conditioner / Heat Pump you want to calibrate.

Step 2: Tap on the 'Settings' icon on the top right.

Step 3: Tap on 'Device Preferences'.



Step 4: Tap on 'Calibration'.

Step 5: Tap on 'Temperature'.

Step 6: From the drop-down menu, tap on 'Humidity'. Adjust the humidity as required.

Step 7: Tap on 'Done'. Your device has now been calibrated.

13:37



Bedroom



Device Name

Bedroom >



Temperature Unit

°C

°F



Touch



Display



Calibration



Move to Group



13:37



Calibration Type

Bedroom

Existing temper

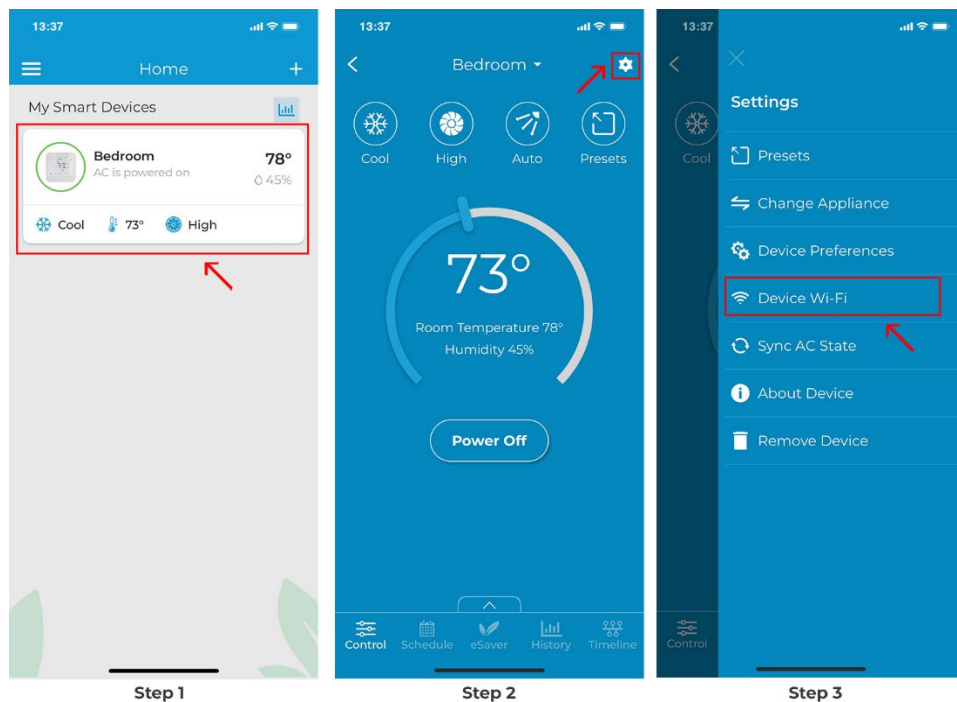
Calibrate temper

Step 4S: Changing Wi-Fi

Step 1: On the Home screen, tap on the Breez Max device you want to change the Wi-Fi of.

Step 2: Tap on the 'Settings' icon on the top right.

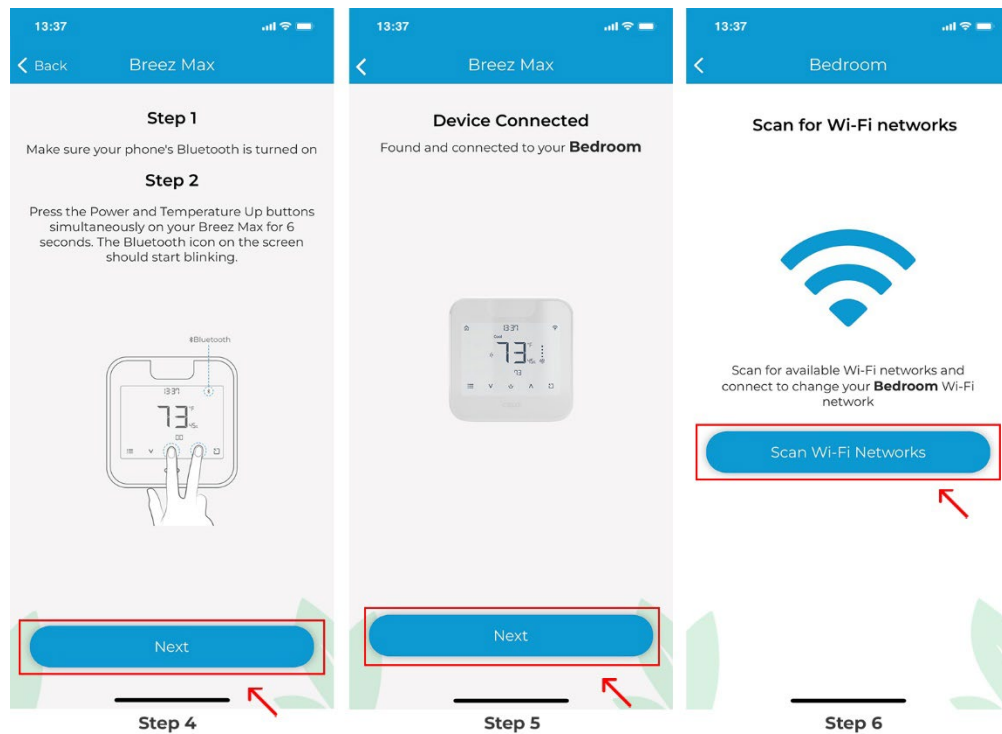
Step 3: Tap on 'Device Wi-Fi'.



Step 4: Make sure your phone's Bluetooth is turned on. Press the power-up and temperature buttons simultaneously on your Breez Max for 6 seconds. The Bluetooth icon on the screen should start blinking. Tap "Next".

Step 5: Cielo Home app will show your connected device. Tap "Next".

Step 6: Tap 'Scan Wi-Fi Networks'. A list of available Wi-Fi networks will appear. Select your desired Wi-Fi network, and enter the password to connect.



Step 4T: Sync AC State (e.g. AC is ON and App is showing it as OFF)

Step 1: On the Home screen, tap on the Breez Max device you want to sync with your AC.

Step 2: Tap on the 'Settings' icon on the top right.

Step 3: Tap on 'Sync AC State'.

Step 4: From the drop-down menus, select the AC parameters which you want on your Breez Max device. Then tap on 'Sync'. The Breez Max device will now display these selected parameter values.

13:37



Home



My Smart Devices



Bedroom

AC is powered on

78°

45%



Cool



73°



High



13:37



Cool



High

Room

Step 4U: Group Settings of your connected Air Conditioners

1. Creating a group

A group will allow you to control the power and other settings of all your registered devices together with a simple tap. To create a group in app, follow these steps:

Step 1: On the Home screen, tap on the Breez Max device you want to move to a group.

Step 2: Tap on the 'Settings' icon on the top right.

Step 3: Tap on 'Device Preferences'.

Step 4: Tap on 'Move to Group'.

13:37



Home



My Smart Devices



Bedroom

AC is powered on

78°

45%



Cool



73°



High



13:37



Cool



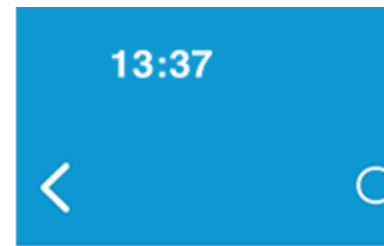
High

Room

Step 5: Tap on 'Add' to create a group.

Step 6/7: Give your group a name (e.g. Ground floor, First floor, Basement, etc.) and choose an icon.

Step 8: Group is created successfully.



Name

First Floor

Select an icon



You have not created a group as yet.
Please tap the button above to create a
group

2. Adding a Device to a group

Step 1: On the Home screen, tap on the Breez Max device you want to move to a group.

Step 2: Tap on the 'Settings' icon on the top right.

Step 3: Tap on 'Device Preferences'.

Step 4: Tap on 'Move to Group'.

13:37



Home



My Smart Devices



Bedroom

AC is powered on

78°

45%



Cool



73°



High



13:37



Cool



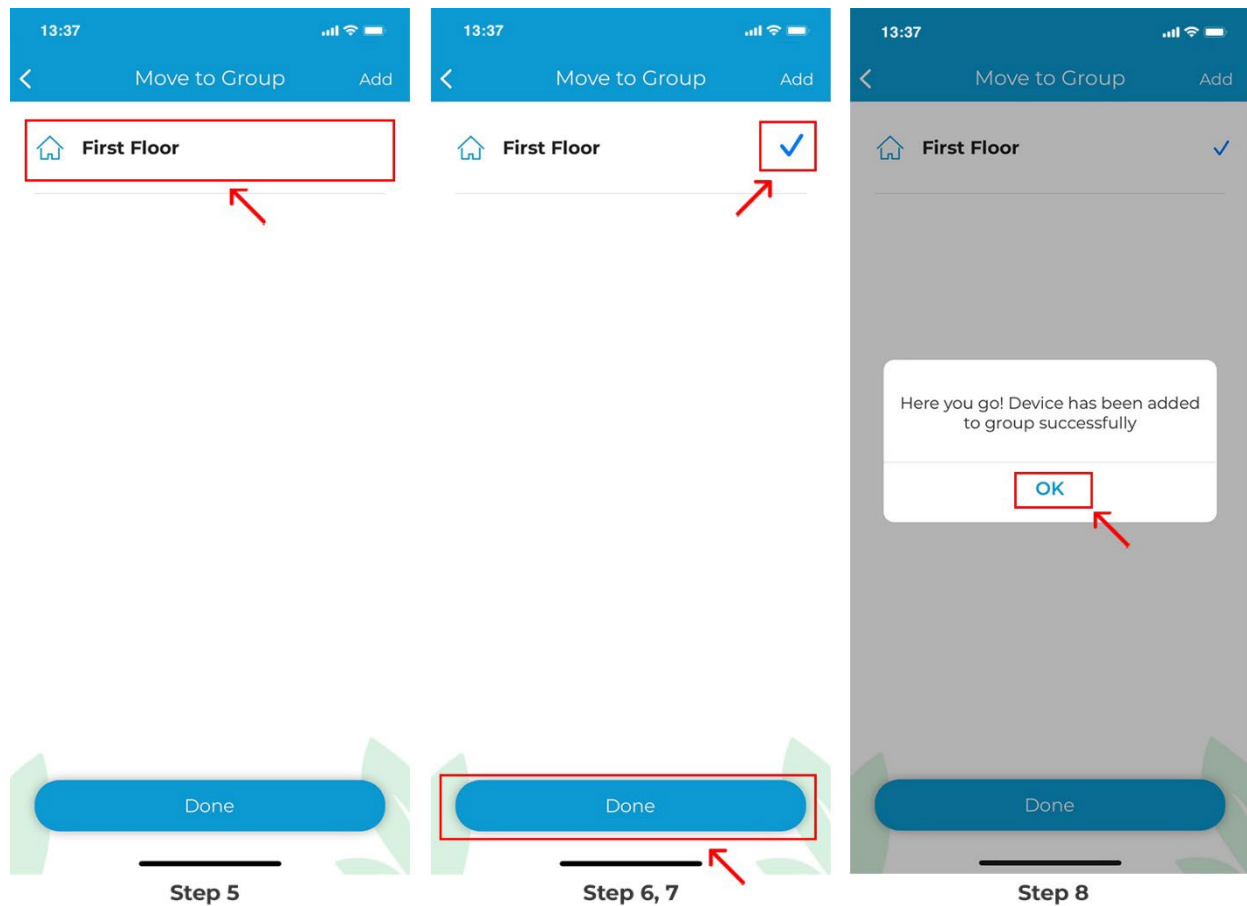
High

Room

Step 5: On the Groups Home screen, you will see a list of all active groups. Tap on the group you wish to move the device to.

Step 6/7 : You will see a checkmark next to the group name. Tap on 'Done' .

Step 8 : Tap on 'OK'. The device is added to the group successfully.



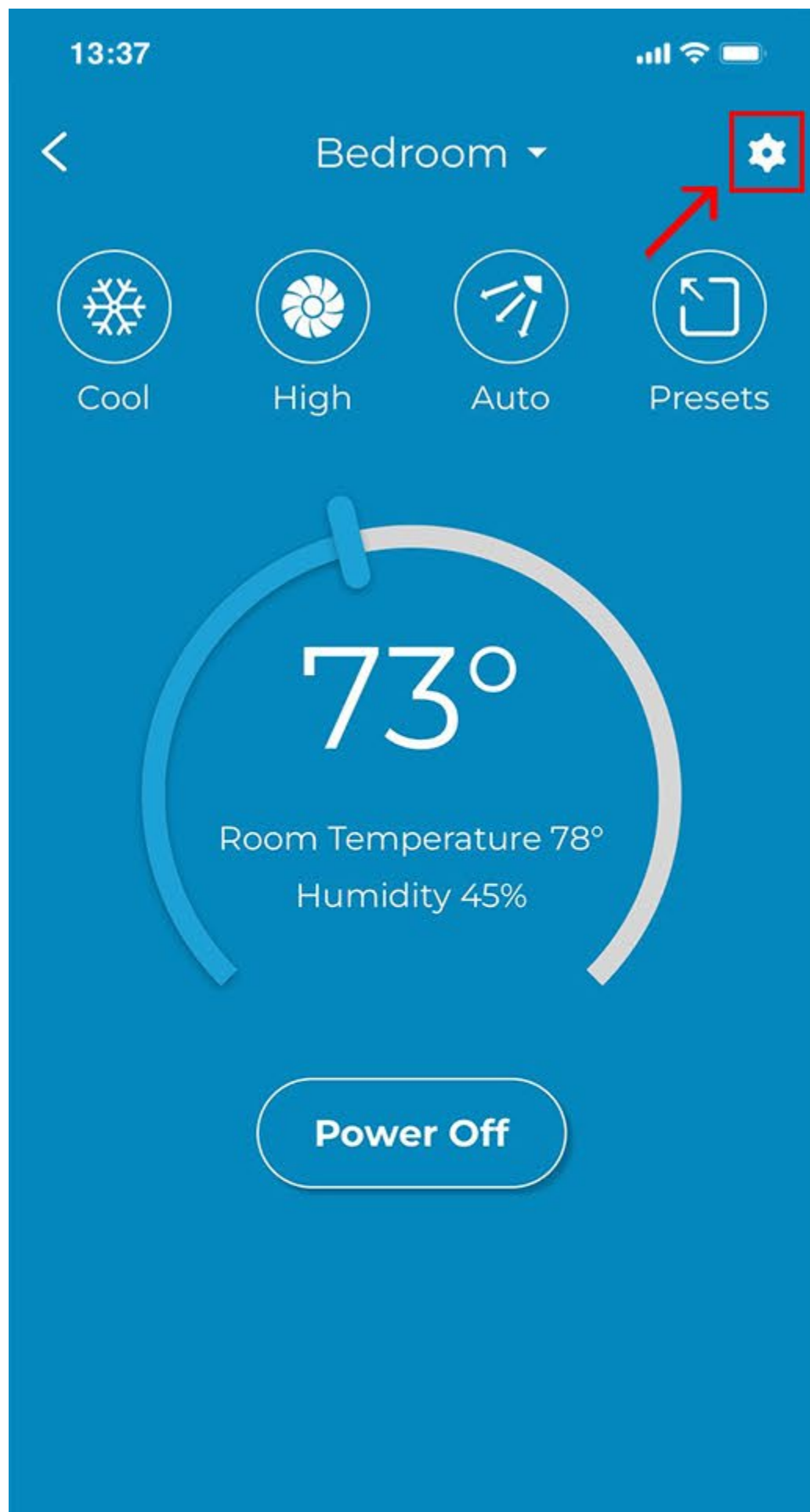
3. Removing a Device from a group

Step 1: On the device control screen, tap on the 'Settings' icon on the top right.

Step 2: Tap on 'Device Preferences'.

Step 3: Tap on 'Remove from Group'.

Step 4: Tap on 'OK'. Device removed from the group successfully.

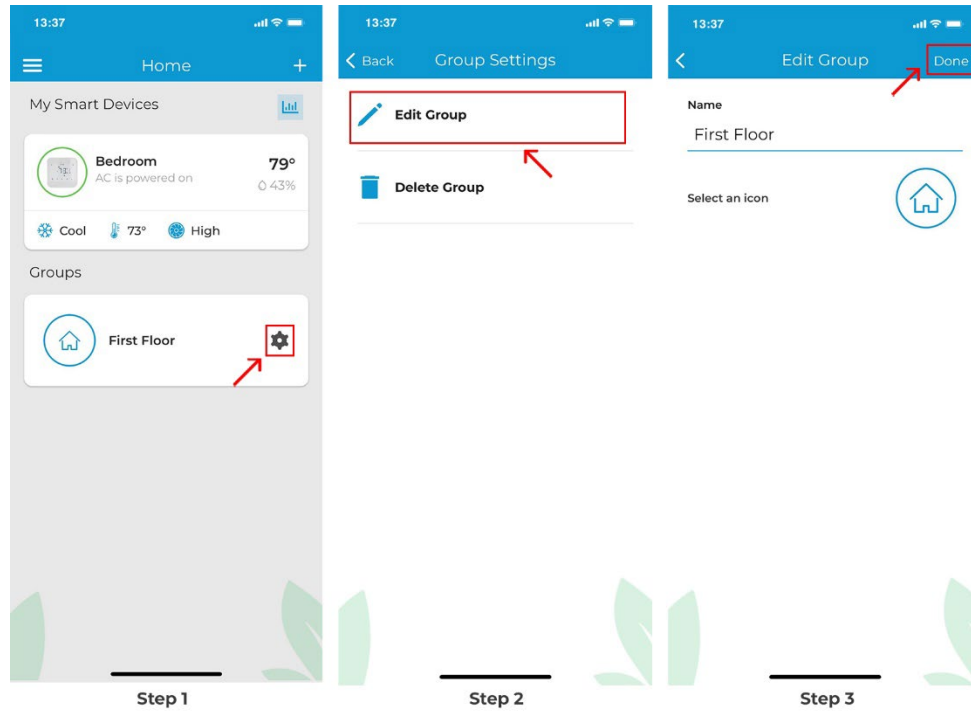


4. Editing a group

Step 1: Tap on 'Settings' icon of the group you wish to edit.

Step 2: In group settings, tap on 'Edit Group'. You can change the icon and name of the group as you desire.

Step 3: Tap on 'Done'.



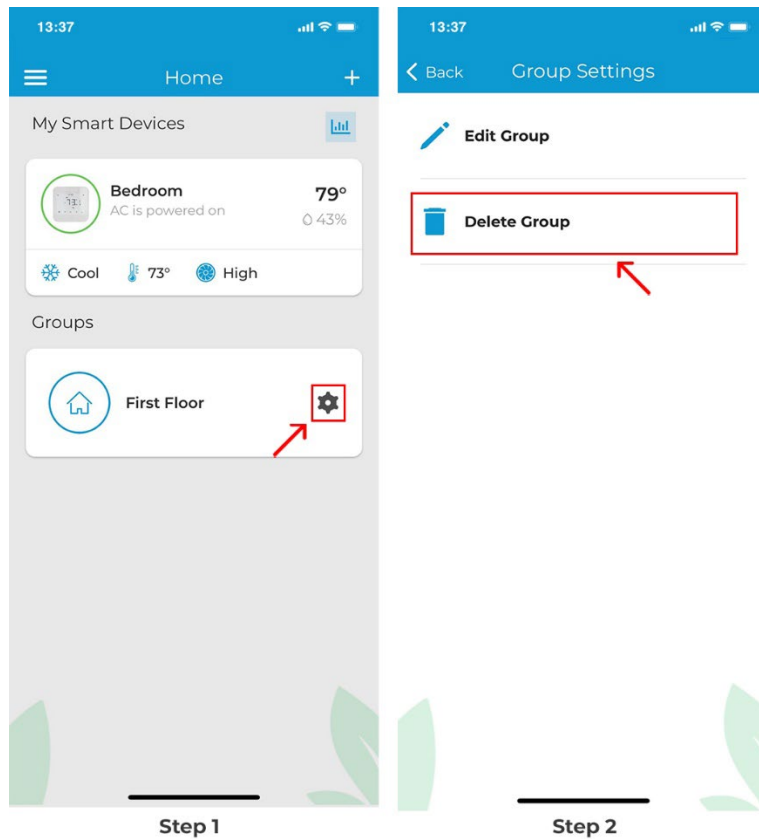
5. Deleting a group

Note: To delete a group, you have to remove all the devices added in a group individually. You may not be allowed to delete a group otherwise. To delete a device from a group, refer to Section 3.

Step 1: Tap on 'Settings' icon of the group you wish to delete.

Step 2: In group settings, tap on 'Delete Group'.

Step 3: Group is successfully deleted.



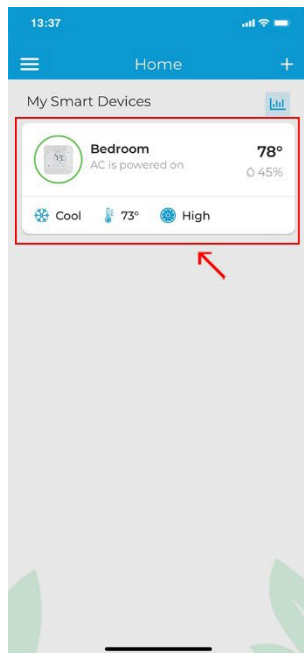
Step 4V: Removing your Device

Step 1: On the Home screen, tap on the Breez Max device you want to delete.

Step 2: Tap on the 'Settings' icon on the top right.

Step 3: Tap on 'Remove Device'.

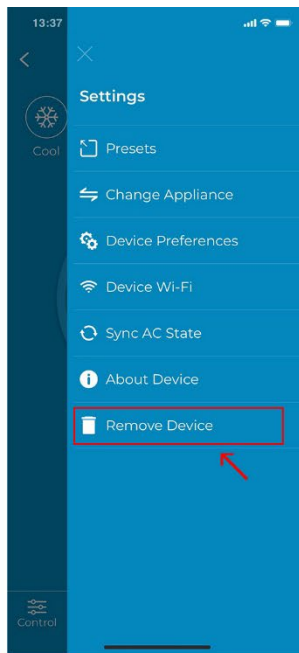
Step 4: Tap on 'Remove' on the pop-up. Your device is now removed.



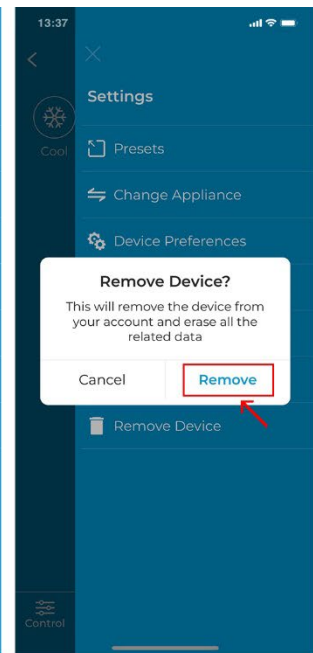
Step 1



Step 2



Step 3



Step 4