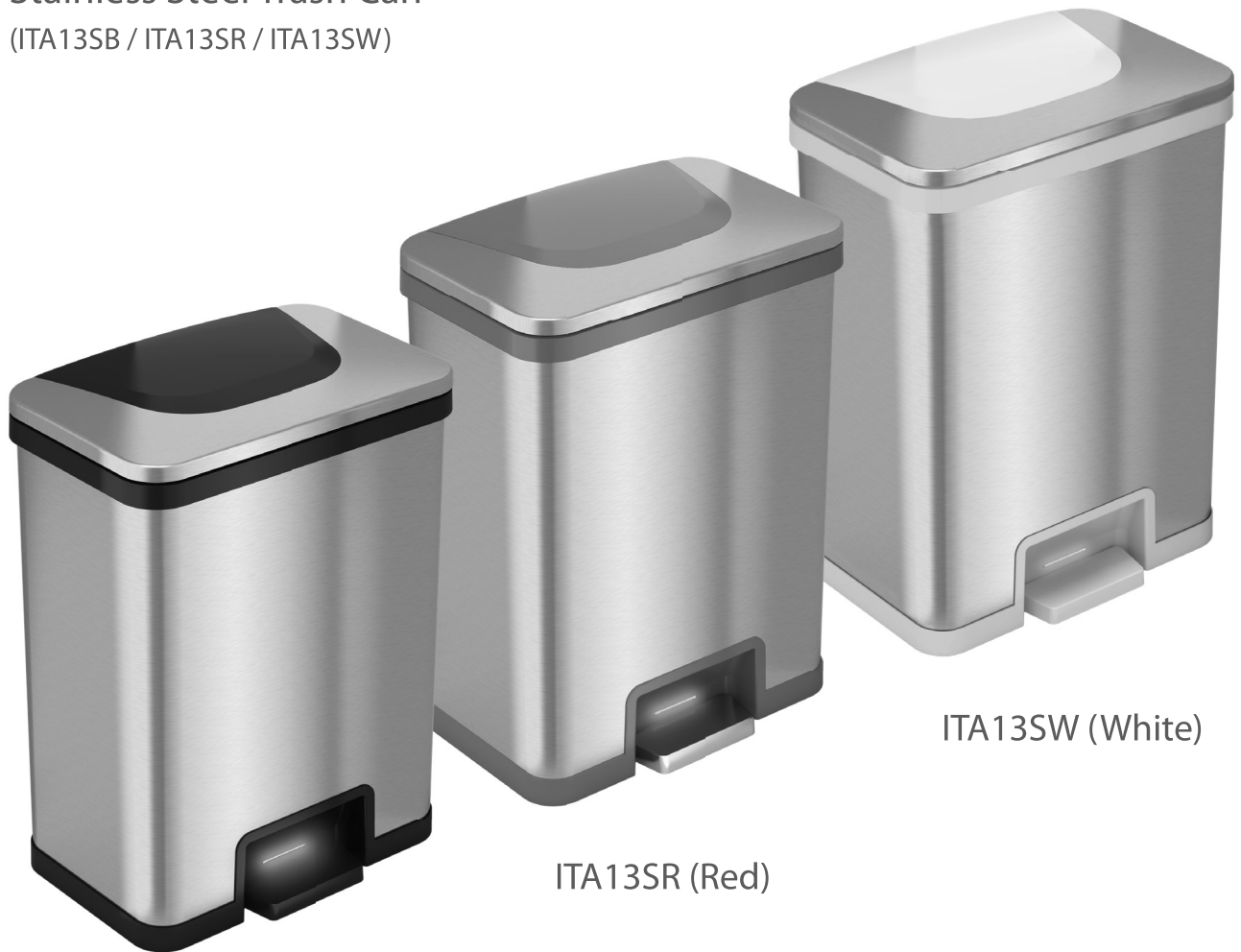




## User Manual

13 Gallon AutoStep®  
Stainless Steel Trash Can  
(ITA13SB / ITA13SR / ITA13SW)



ITA13SB (Black)

ITA13SR (Red)

ITA13SW (White)



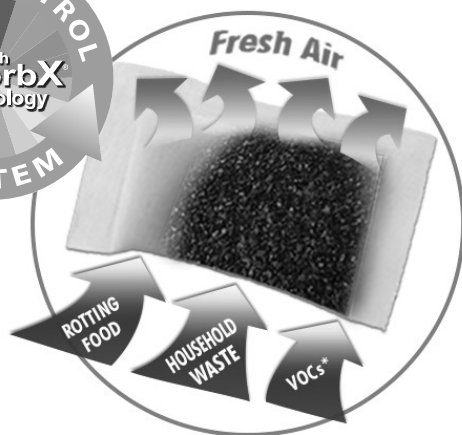
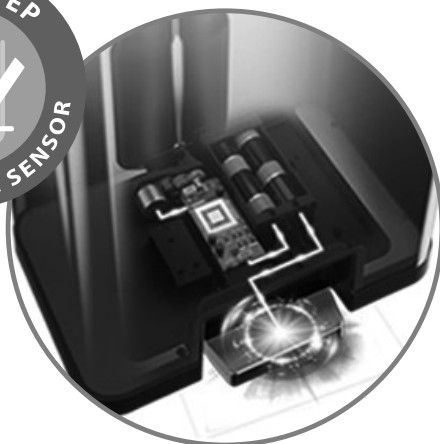
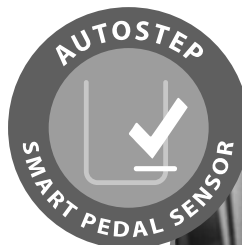
**Your 100%  
satisfaction is  
our #1 goal!**

### We're here to help!

If you have any questions or concerns about this product, please contact iTouchless Customer Support for immediate assistance. You can reach us at **1-844-660-7978** or **support@itouchless.com**.

## About your iTouchless® Trash Can

**Congratulations! Your automatic step trash can is your new best friend at home or the office.** Convenient and hygienic, AutoStep Trash Can is the easy way to dispose of in your home or office. Just a light tap on the pedal sensor automatically opens the lid. The lid will close, silently and gently, when you're done. It's the no-effort, fully automatic step trash can.



## iTouchless is the "*touch less, do more*" company.

Our technologically advanced waste receptacles and housewares are with you throughout your day – at home and at work – making daily chores quicker, easier, and more hygienic, so you can focus on the things that matter most. Our products are designed by industry professionals who have been inventing innovative smart housewares for decades.

Everything we make is rigorously tested to ensure you're getting a high quality product that will work perfectly for years of use.

We also design our products to be as attractive as they are dependable, so you can get the perfect look to match any décor.

#TouchLessDoMore

## About the Company

Follow us on Facebook® and Instagram® to get news about new product releases, special discounts, and contests.



[www.facebook.com/itouchless](http://www.facebook.com/itouchless)



[www.instagram.com/itouchless](http://www.instagram.com/itouchless)

## Discounts & Prizes



Go to **[www.itouchless.com/register](http://www.itouchless.com/register)** to register your product for simple warranty service and to receive product updates and special offers.

**Product Model # ITAS13B / ITAS13R / ITAS13W**

## Register your Product

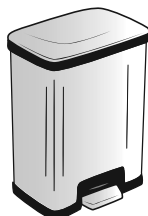
## Contents of the Box



Trash Bag Retainer Ring



One (1) AbsorbX® Odor Filter pre-installed (lasts up to 3 months)\*



Stainless Steel Trash Can



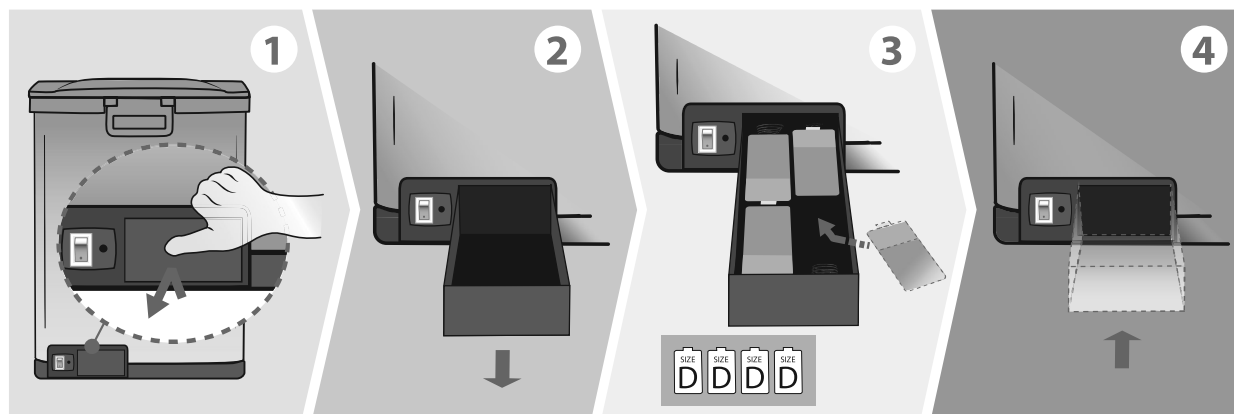
User Manual

\*See "AbsorbX® Odor Filter" section

## Battery Power

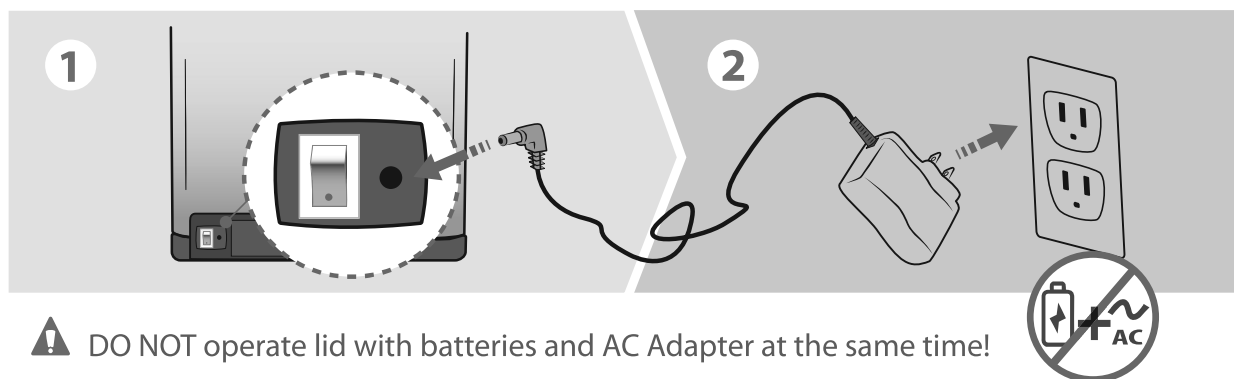
4 "D" Size

(batteries not included)

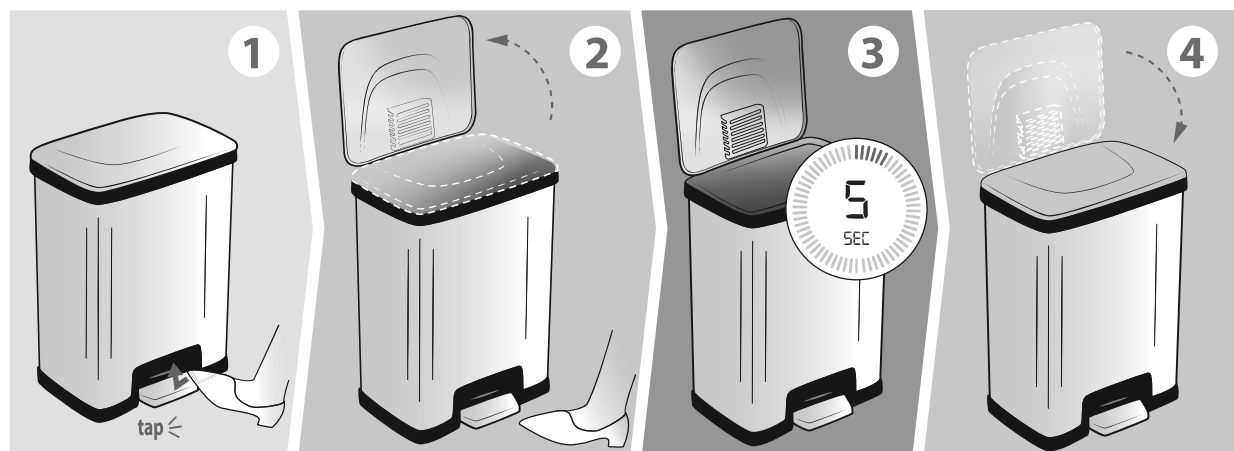


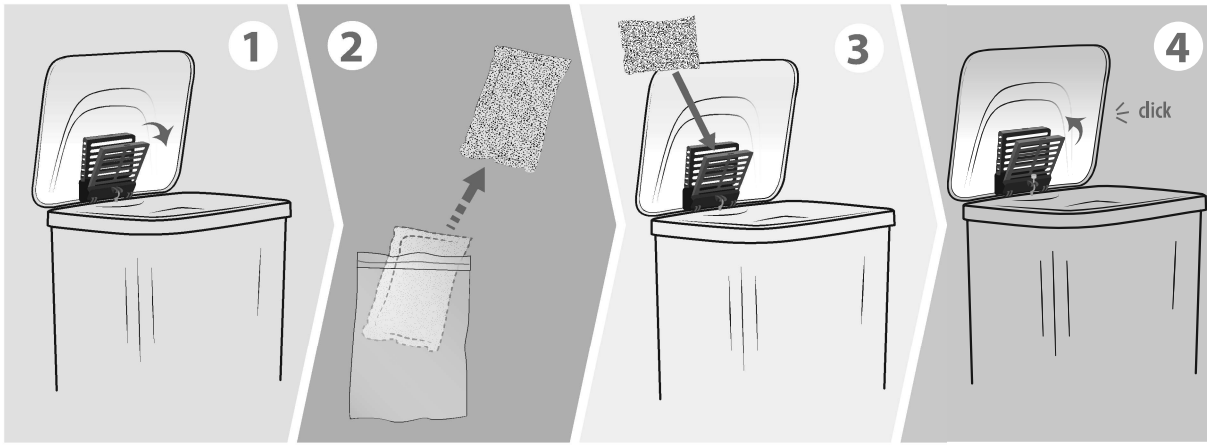
## AC Power

(adapter sold separately)



## Operating TapCan Sensor

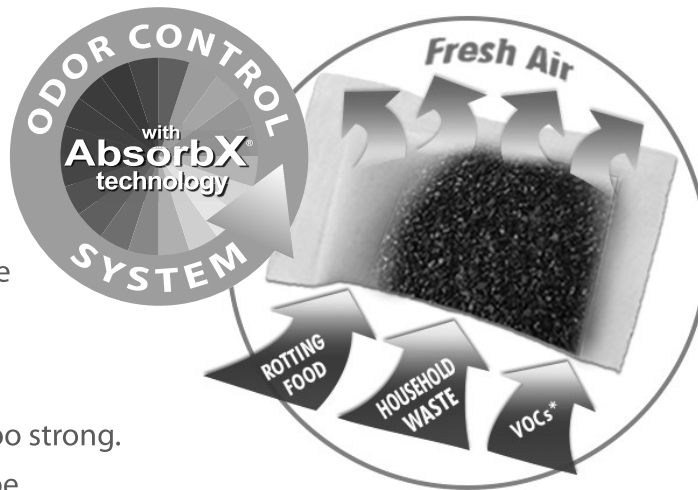




## AbsorbX® Odor Filter

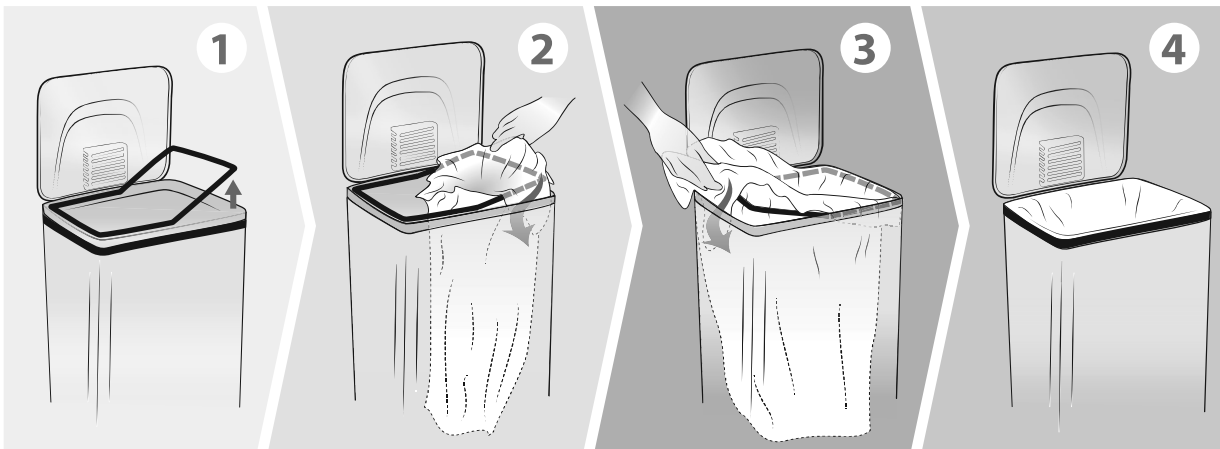
(first filter  
is included)

AbsorbX odor filters utilize all-natural activated carbon technology to absorb and neutralize trash odors, leaving your kitchen smelling fresh and clean. Illness-causing Volatile Organic Compounds (VOCs) are also trapped in the filter, making the air you breathe cleaner and healthier.



## AbsorbX® Odor Control Technology

- Replace AbsorbX® Odor Filter every 3 months or when odor becomes too strong.
- Used AbsorbX® Odor Filter should be disposed of in a trash can.
- Order replacement AbsorbX Odor Filters at [www.itouchless.com/absorbx](http://www.itouchless.com/absorbx)



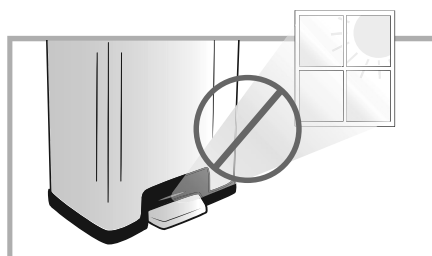
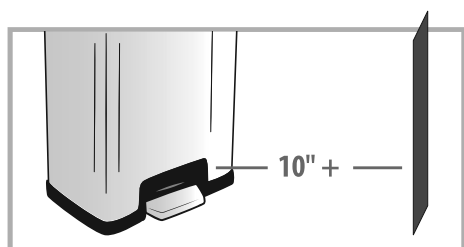
## Trash Bag Retention

## Attention

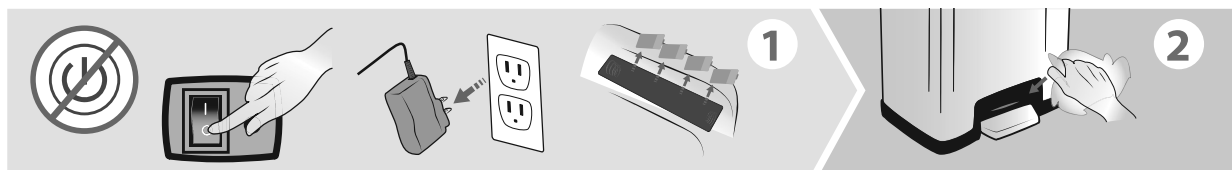
1. This item is not intended for use by persons (including children) with reduced physical, sensory or mental capabilities, or lack of experience and knowledge, unless they have been given supervision or instruction concerning use of the item by a person responsible for their safety. Children should be supervised to ensure that they do not play with the item.
2. Clean the trash can body only with products safe for use on stainless steel.
3. Do not press or force the lid to close. Lid will close automatically after you release the pedal.
4. Ensure there is enough room to operate the trash can without blocking the opening and closing of the lid.
5. Do not overstuff trash bag. It may cause tearing or difficulty removing.



## Care & Maintenance



Maintain at least 10 inches between sensor and wall. Keep sensor out of direct sunshine.





Turn off power, unplug adapter and remove batteries, then clean the sensor area with a soft, damp cloth and dry immediately.



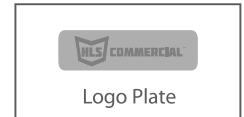
**TO RESET:** Turn off power, unplug adapter and remove batteries, and let trash can sit for at least 2 hours, then plug back in, replace batteries, power on, and attempt to operate lid.

## Trouble-shooting

 Problem	 Solution
<b>1. The lid is opening slowly</b>	The battery power is low. Replace all batteries with a new set of 4 D size alkaline batteries. Do not use rechargeable batteries or mix of old batteries.
<b>2. The lid will not close completely</b>	Ensure that the Trash Bag Retainer Ring has been placed properly on the can, pushed down firmly and is not sticking up.
<b>3. The lid does not open/close</b>  Important: Do not use batteries and the AC power adapter at the same time. It can only be powered by one source at a time.	If you are using Batteries: <ul style="list-style-type: none"> <li>• Ensure batteries are inserted correctly and close the battery cover firmly</li> <li>• Turn power switch to on position "1" and check if the LED blue light flashes.</li> </ul> If you are using AC Power Adapter: <ul style="list-style-type: none"> <li>• Unplug the adapter and insert new alkaline batteries to see if the lid works on battery</li> <li>• If the lid works with batteries, the AC adapter may be broken</li> </ul>
<b>4. I tap the pedal, but the lid does not open</b>	The batteries may need to be replaced. Replace all batteries with a new set of 4 D size alkaline batteries. Do not use rechargeable batteries or a mix of old batteries.
<b>5. I tap the pedal twice, but the lid does not keep open</b>	Ensure the LED is flashing green. The pedal should be tapped two times within 1 second. Please tap the pedal twice quicker.

## Order Replacement Parts & Optional Accessories

Order at [www.itouchless.com/parts](http://www.itouchless.com/parts)



## One (1) Year Limited Warranty

**AutoStep® Trash Can** is distributed by iTouchless with the highest quality components and most advanced technologies available. The trash can is warranted to be free from defects in material and workmanship, given normal use and care, for 365 days from the date of the original purchase with proof of purchase within the United States and Canada. iTouchless will only honor warranty requests from orders placed with our authorized dealers. Items sold as used, floor sample or refinished are sold solely under the terms and conditions of the selling party; iTouchless will not warrant such purchase. iTouchless will repair or replace a working condition Lid Cover thereof which fails as the result of such a defect during the warranty period.

The warranty is the customers' exclusive remedy for product defect and does not apply to:

- User modification
- Attachments to product by user that causes damage
- Any product, on which the seals and/or serial numbers have been broken, removed, tampered with, defaced or altered in any manner
- Damage caused by abuse, misuse, accident, water or theft

Except as stated above, iTouchless makes no express or implied warranties as to any product, in particular, makes no warranty of merchantability or of fitness for any particular purpose. iTouchless shall not be liable for consequential or incidental damages arising from any product defect. Our Liability is limited to the replacement of any defective product. iTouchless expressly disclaims all warranties not satisfied in this limited warranty. Any implied warranties that may be imposed by law are limited to the terms of this limited warranty. The Can Body, AbsorbX® Odor Filter, Retainer Ring, and Filter Compartment are not covered by this warranty.

If Trash Can should fail during the warranty period, contact us through [www.itouchless.com/contacts/](http://www.itouchless.com/contacts/) to submit a request for warranty service. For additional details, please refer to the warranty email that iTouchless will provide. The required warranty fee is subject to location. Fee references are as following: for Contiguous 48 U.S. States \$9.95 and up, for Canada \$19.95 and up, for Alaska and Hawaii \$29.95 and up.

Subject to the above conditions, we will ship a working unit to you after payment has been provided for the warranty service fee. This warranty gives you specific legal rights. However, you may also have other rights that vary from state to state and province.