



V380 Pro Smart camera--Product Manual (Suitable for WiFi camera)

Download

Search for "V380 Pro" in the APP Store or scan the QR code below to download and install the V380 Pro APP



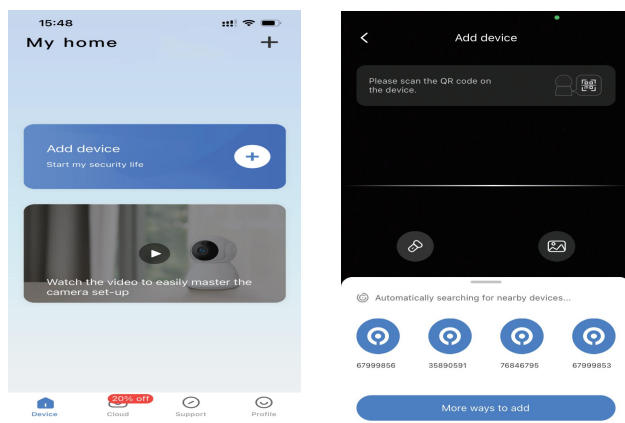
Scan the QR code to download the V380 Pro APP

Electronic manual

Use the V380 Pro APP to scan the QR code on the camera to add the device and follow the instructions to view the electronic manual of the device.

Preparations before network distribution

1. Open the APP, click on the account registration, enter the mobile phone number or email address, obtain the verification code, set the account password and complete the registration;
2. Click "+" in the upper right corner, click "+ Add device", and scan the QR code on the body of the machine with your mobile phone;



After scanning the QR code on the device, please select the corresponding network configuration method according to your network configuration interface.

Solar-powered camera indicator light

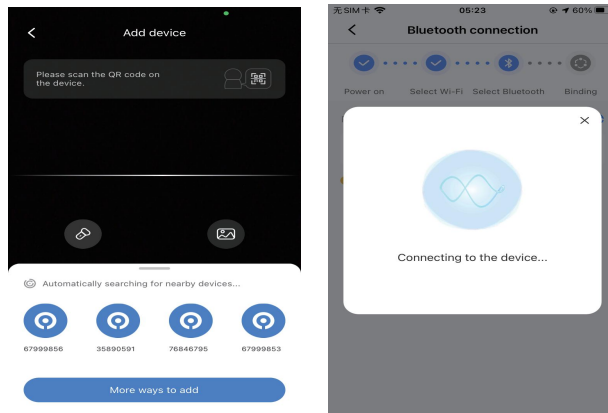
Wi-Fi camera

1. Indicator is off: device is powered off or standby mode;
2. Slow flashing red light: device is ready for connecting;
3. Quick flashing red light: device is connecting to the router;
4. Solid yellow light: device has been connected to the Internet;
5. Flashing yellow light: device is connecting to the Internet. If the device cannot connect to the Internet normally, please check whether the router can access the Internet normally.

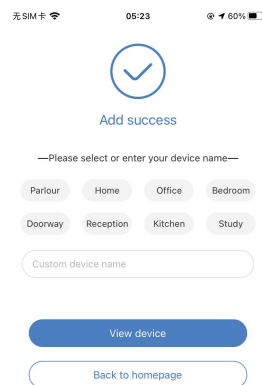
Bluetooth network connection

Note: Turn on your phone's Bluetooth before you add a camera

1. Connect your mobile phone to 2.4GHz Wi-Fi first.
2. Confirm the connected Wi-Fi and enter the password.

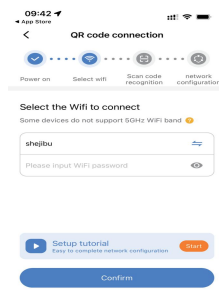


3. The device will prompt "Network configuration received, connecting" Please be patient when using the device for the first time.
4. After the device prompts "Network connected" . "Bind successfully, cameraready", it means that the device has connected to the network and is successfully added.



QR code network connection

1. Please select the Wi-Fi that the device needs to connect to, and enter the correct password.



Note: The device only supports 2.4GHz Wi-Fi, Please select Wi-Fi without "5G". The name of Wi-Fi should not contain special symbols.

2. The APP will generate the QR code and then use camera to scan this QR code.

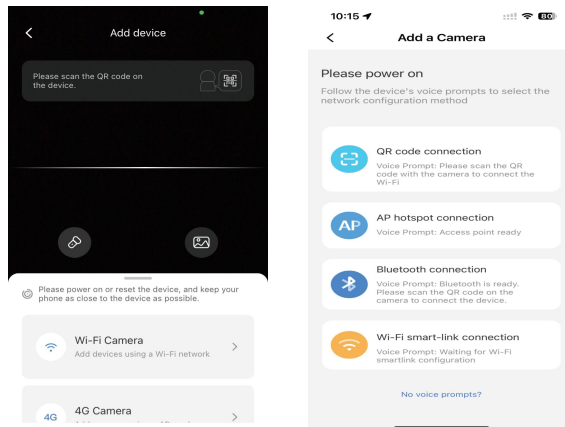
3. After the device identifies the QR code successfully, it will prompt "Network configuration received, connecting". Please be patient when using the device for the first time.
4. After the device prompts "Network connected" . "Bind successfully, cameraready", it means that the device has connected to the network and is successfully added.



AP hotspot connection

The device also supports the "AP hotspot connection". Please ensure the device has been reset.

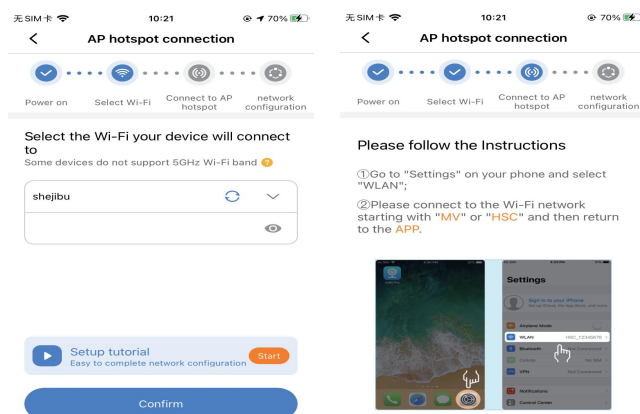
1. Click "+" in the upper right corner, swipe up the bottom and select "Wi-Fi Camera" - "AP hotspot connection".



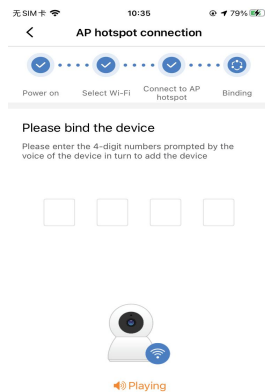
2. Select the Wi-Fi that the device needs to connect to, and enter the correct password.

(For iOS, if you want to connect to other Wi-Fi, please connect your mobilephone to the Wi-Fi you need and then return to the APP to refresh)

3. Connect to the hotspot of the device based on APP instructions.

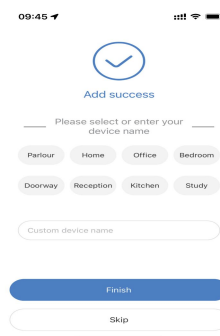


4. Enter the four-digit numbers prompted by the voice of the device in turn to add the device.
5. After the device prompts "Network connected" - "Bind successfully, camera ready", it means that the device has connected to the network and is successfully added.



Adding completed

After the camera prompts "Network connected" - "Bind successfully. camera ready", you can create a group for the camera and set the name.

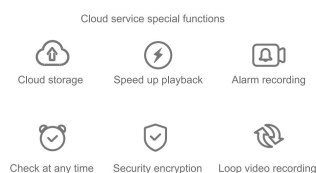


Attentions

1. Concerning Micro SD card recording, when the recording capacity reaches the upper limit, the earliest recording file of the recording event will be automatically overwritten.
2. Long-term use in the unconventional environment (high temperature, high humidity, the large amount of dust or smoke, etc.) may damage the camera.
3. V380 Pro APP and device firmware will be updated from time to time. For your best experience, please update the APP and upgrade the device firmware in time.

Cloud service

You can enjoy these special functions after subscribing the cloud service on the [Cloud] interface of the V380 Pro APP.



Cloud service is a value-added service that requires payment.

