

JETE

WARRANTY CARD and USER MANUAL

TWS TX3



e-Usermanual

IMPORTIR

PT. DORAN SUKSES INDONESIA

Jl. Lebak Jaya 2 Tengah No. 2, Surabaya

CUSTOMER SERVICE

 081217393609

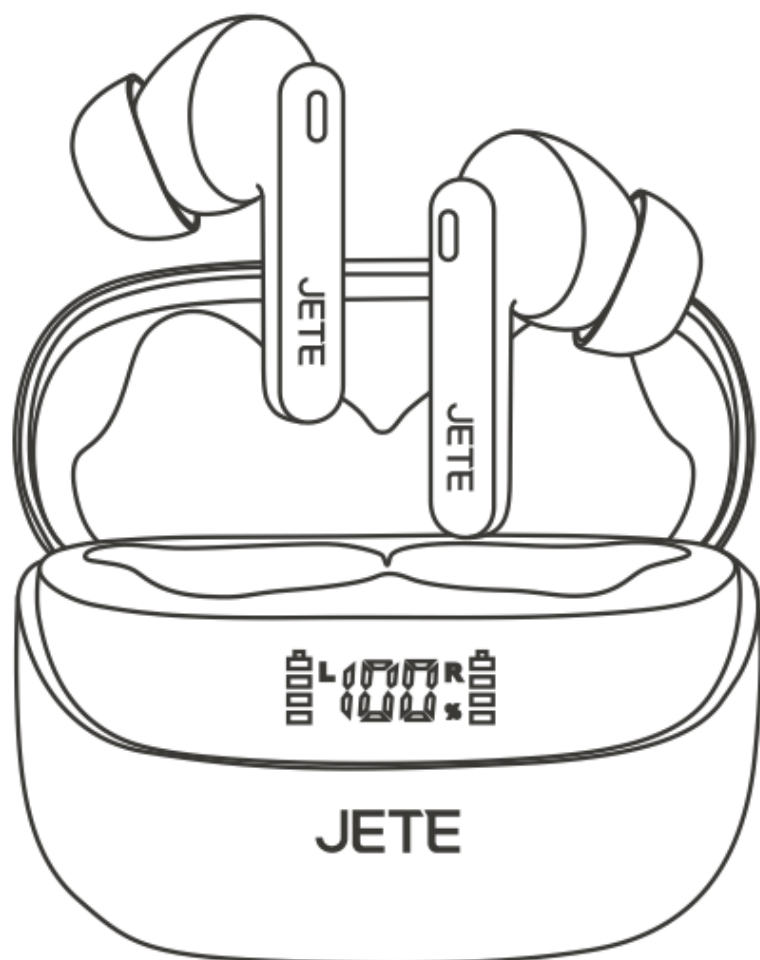
 jete.id  jeteindonesia

 jeteindonesia  jeteindonesia

JETE

USER MANUAL

TWS TX3

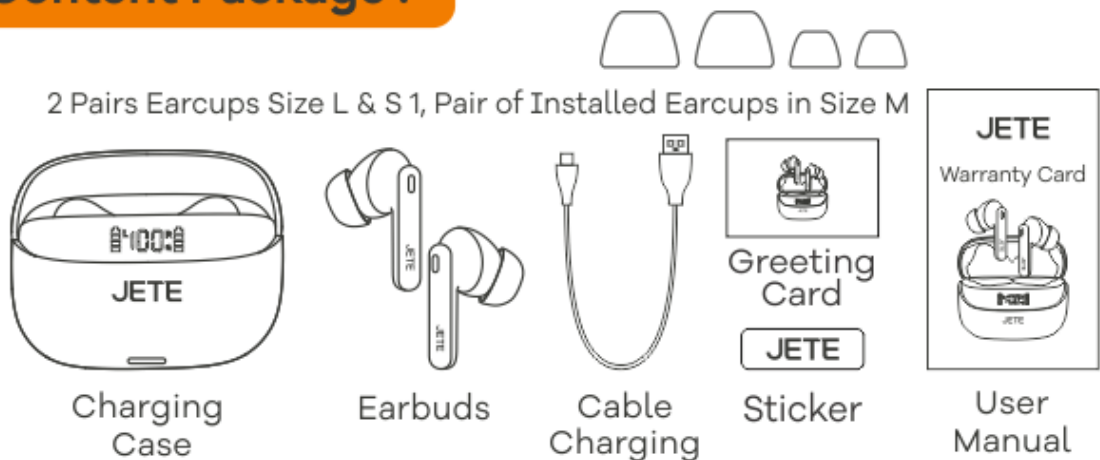


Please read the instructions carefully
before using the product.

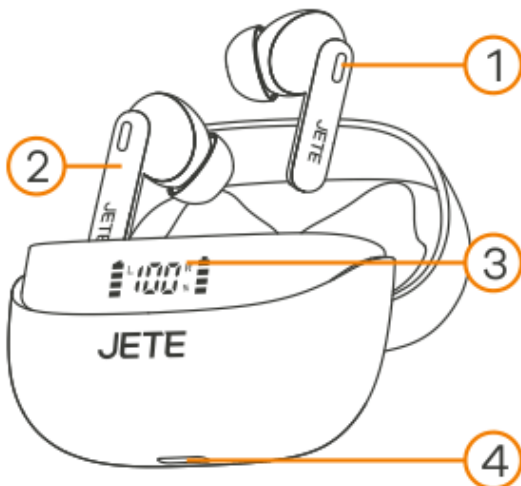
Product Introduction :

Thank you for purchasing JETE products. For optimal and safe performance, it is expected to read the instructions carefully before using this product.

Content Package :



Description Structure Product :



1. Earbud LED Indicator
2. MFB (Multifunction Button)
3. Display LED Case
4. Charging Port

Tips : Gently insert the earbuds into your ears and adjust the position to fit your ears.



Attention:

Please open the plastic seals on both ends of the earbuds and do not forget the earbuds in the charger into the charging case for approximately 10 minutes for optimal use.

How to Install & Register Applications :

QR Aplikasi
"JETE SMART"



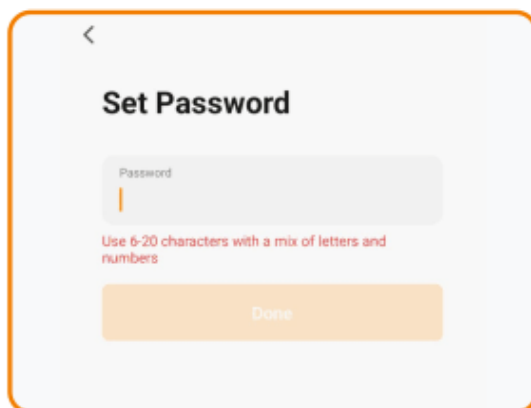
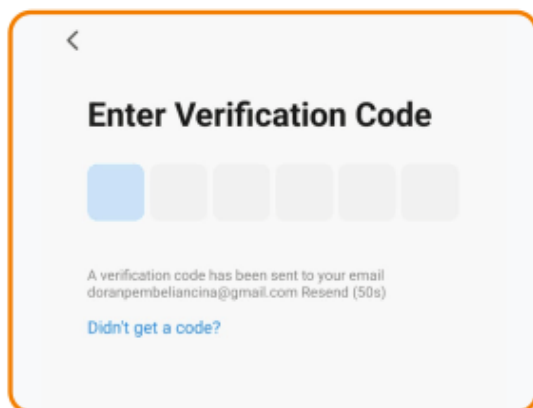
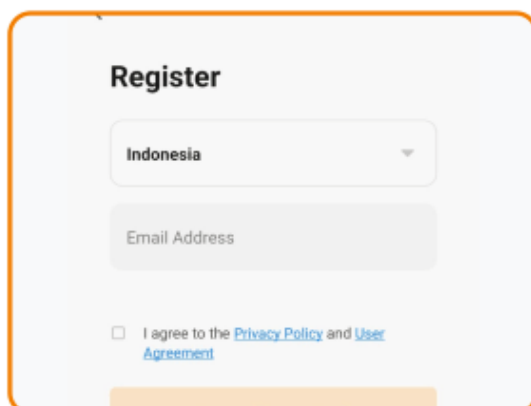
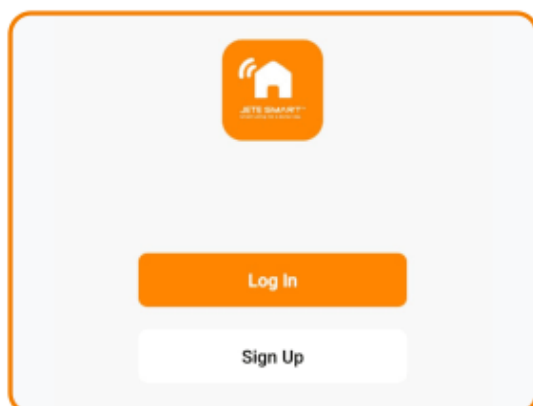
App Store: JETE SMART



Google Play: JETE SMART



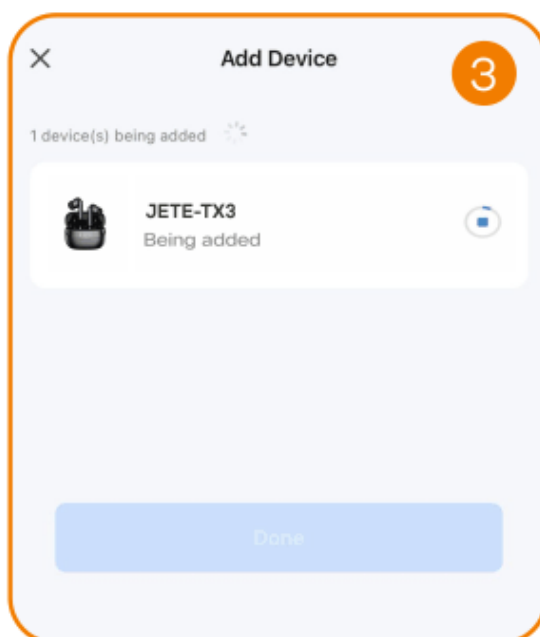
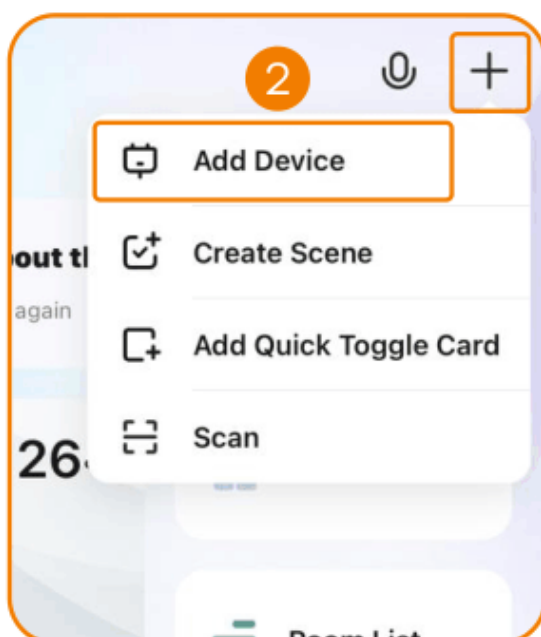
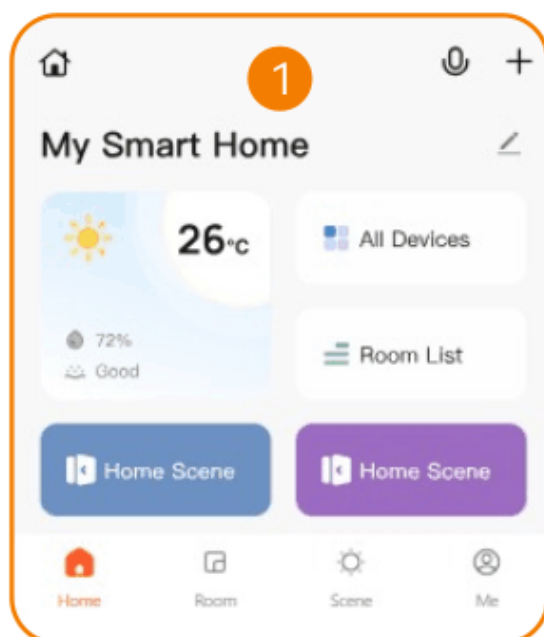
1. Access the Play Store or App Store. Alternatively, you may scan the QR code provided on the product packaging.
2. Download and install the "JETE SMART" application.
3. First-time users are required to complete the registration process.
4. Select "Sign Up" to register.
5. Enter your email address and country of residence.
6. Input the verification code sent to your registered email address.
7. Create your password.



Note : JETE SMART is an application designed to facilitate easy control of your JETE Smart-Home devices.

How to Connect with Your Smartphone :

1. Remove the earbuds from the charging case.
2. Enable Bluetooth on your device.
3. Activate the search function and select "JETE-TX3".
4. Open the JETE SMART application.
5. Tap the "+" icon and select "Add Device".
6. Choose the "JETE-TX3" device.

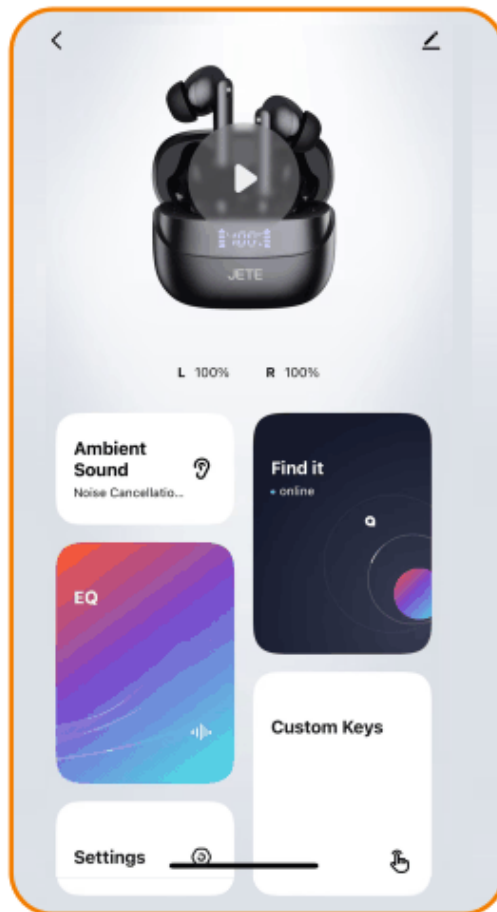


7. The earbuds are now ready for use.
8. If the earbuds are not paired with your device's Bluetooth within 180 seconds after activation, the earbuds must be restarted.

Note :

- The earbuds will automatically connect to the previously paired device upon being powered on.
- The connection will be lost when you move out of range and will automatically reconnect when you return within range within 3 minutes.

How to Use the Application :



A. How to Set Music :

1. Access the home screen.
2. Tap on the TWS image.
3. Select the buttons for next/previous and play/pause.
4. Adjust the volume by sliding it up or down as required for your usage.



B. How to Change Modes Using the Application:

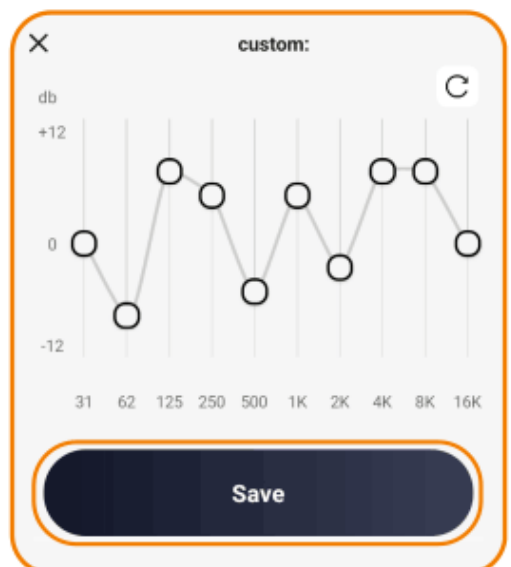
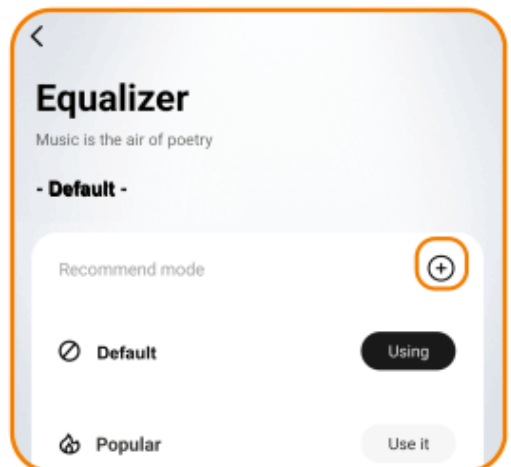
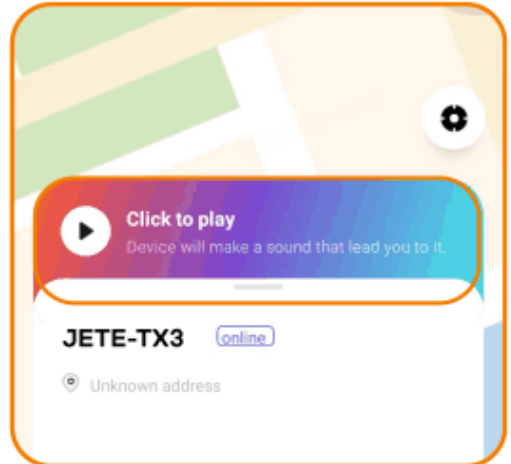
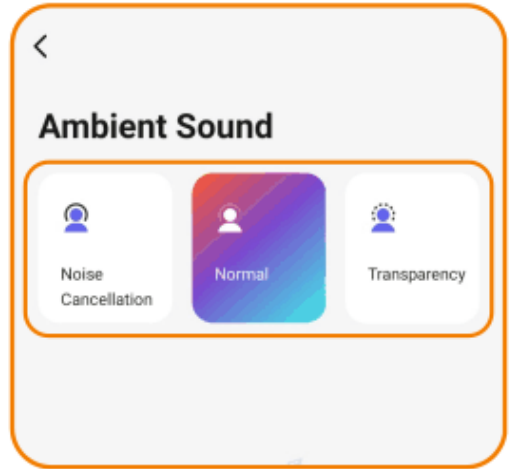
1. Access the home screen.
2. Select the "Ambient Sound" menu.
3. There are 3 options available: Noise Cancellation, Normal, and Transparency.
4. Choose the mode according to your usage.

C. How to Find Earbuds Using the Application:

1. Access the home screen.
2. Select the "Find It" menu.
3. Tap "Click to play"; the earbud indicator will sound, and the display will track the earbud's location.

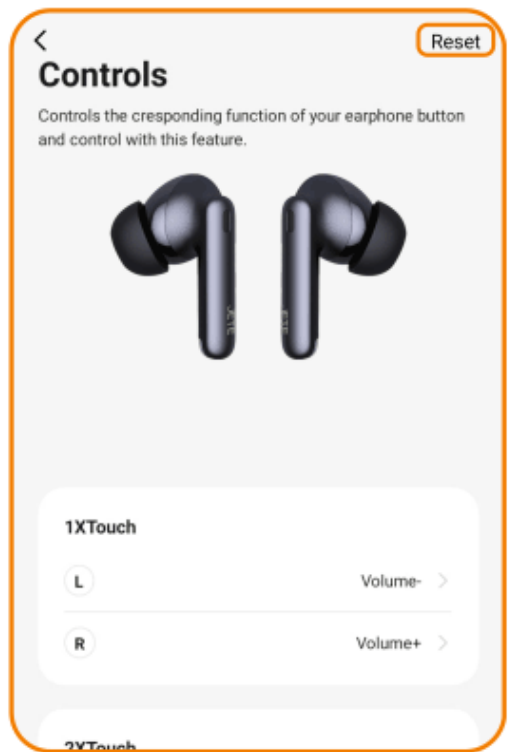
D. How to Change Equalizer Mode Using the Application:

1. Access the home screen.
2. Select the "EQ" menu.
3. Choose your desired equalizer mode.
4. Tap "+" to manually customize the equalizer.
5. Adjust the equalizer graph as desired.
6. Press "Save" when finished.



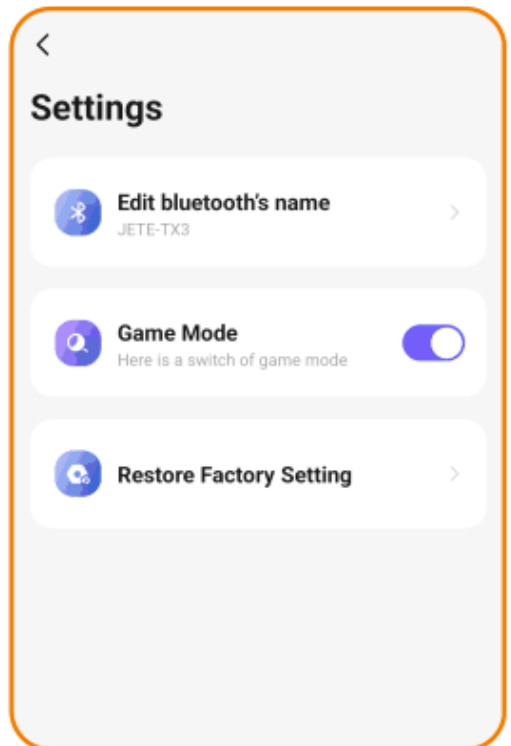
E. How to Change MFB Functions on the Earbuds:

1. Access the home screen.
2. Select the "Custom Keys" menu.
3. Choose "Tap Left" or "Tap Right" as desired.
4. You can reset to default settings by pressing the "Reset" button.



F. How to Change TWS Settings with the Application:

1. Access the initial display.
2. Select the "Settings" menu.
3. There are 3 setting menus:
 - Choose "Edit Bluetooth's name" to change the Bluetooth name, then press save.
 - Slide the "Game Mode" lever to activate Game Mode.
 - Select "Restore Factory Setting" to reset the TWS via the application.



How to Use TWS :

How to Answer/End an Incoming Call :

Press once on the right/left earbud to answer or end a call.

How to Reject an Incoming Call :

Press and hold for 2 seconds on the left/right earbud to reject a call.

Tips: Some devices may be able to answer calls through their own settings. Please adjust according to your device's instructions.

How to Play/Pause :

Press once on the left/right earbud to play/pause a song.

How to Play Music :

- Play next song : Press 3 times on the right earbud to play the next song.
- Play previous song : Press 3 times on the left earbud to play the previous song.

How to Increase & Decrease Volume :

- Press and hold for 2 seconds on the right earbud to decrease volume.
- Press and hold for 2 seconds on the left earbud to increase volume.

How to Activate Voice Assistant Feature :

Press 2 times on the left earbud to activate the voice assistant.

How to Change Mode :

- Press 2 times on the right earbud to change mode (Gaming mode, Music mode).
- Press 4 times on the left/right earbud to change mode (ANC, Transparency mode).

How to Use Mono Mode on Earbud TX3 :

- Take out one earbud from the charging case that was previously connected.
- Then play music (this mode can also be used for phone calls).
- It is recommended that both earbuds function normally when not in mono mode.

How to Restore Factory Settings :

Take out the earbuds from the charging case, then press 6 times on the right/left earbud until the indicator light flashes white and turns off, indicating the earbud has been successfully reset.

How to Charge :

Charging Case

- Charge the case. The charging case's LED indicator will blink, and charging will be complete when the percentage reaches 100%.

Earbuds

- Insert the earbuds into the charging case to charge them. The LED battery indicator on the charging case will appear next to the percentage indicator.

Specifications :

Bluetooth Version	: V5.4
Earbud Battery	: 33mAh*2
Charging Case Battery	: 300mAh
Sensitivity	: 108±3dB
Input	: DC 5V/1A
Impedance	: 32Ω
Latency	: 45ms
Wireless Working Range	: 15m (without obstacles)
Frequency	: 20Hz-20KHz
Standby Time	: 180 days
Talk Time	: 4 Hours
Charging Time	: 1.5 Hours
Weight	: 26g (Charging case)

Terms and Conditions of Warranty :

1. This warranty is valid for 2 years for original JETE products.
2. This warranty is valid for the warranty period stated on the product packaging since the date of sale.
3. During the warranty period, the user is exempt from any replacement costs that may occur.
4. The user must show the warranty card and purchase receipt when applying for a warranty.
5. The warranty applies to functional damage:
 - Disfunction.
 - Audio not detected.
 - Indicator off.
 - Battery damage.
6. This warranty DOES NOT APPLY if:
 - PRODUCT IS BROKEN, CRACKED, BURNED, FALLEN,
 - MODIFIED YOURSELF, SOAKED IN WATER.
 - Supporting accessories such as: cables, adapters, etc.
 - Abnormal use, not stored properly, natural disasters, modified, or anything intentionally.
 - The product has been repaired by a third party.
 - The data is not filled in completely by the seller and buyer.
 - Damage caused by user error.
 - The product warranty period has expired.

Maintenance :

Please read the following recommendations before using JETE

- Avoid exposing the device to water vapor or humid places. This can affect the internal circuit.
- Do not use cleaning solutions to clean the device.
- Do not expose the device to extreme heat or cold, as this can damage the device or change certain plastic parts.
- Avoid exposing the device to sharp objects, as this can cause scratches and damage.
- Do not disassemble or modify the device.
- Do not drop the device, as this can damage the circuitry.
- Always store the device at room temperature.

How to Warranty Claim JETE Product :

1. All warranty claims can be made at the list of Authorized Outlets listed on the warranty card.
2. Buyers can come to an authorized Outlet or contact Customer Service +62812-1739-3609 if they want to exchange the product online.
3. All expedition shipping costs / product postage are borne by the buyer.
4. When claiming the warranty, the buyer is MANDATORY to show the completeness of the warranty:
 - A purchase receipt that clearly states the name of the outlet and the date of the transaction.
 - The product must still be within the specified warranty period.
 - Warranty card that has been filled out.
 - Box / Packing Product.
5. Please inform the constraints / product damage that occurs to our staff.
6. WARRANTY DOES NOT APPLY if USER DAMAGE is found, namely:
 - BROKEN, CRACKED, BURNED, DROPPED, MODIFIED BY YOURSELF, SUBMERGED IN WATER.
7. If there are problems during warranty claims or other questions, please contact Customer Service +62812-1739-3609

**2 YEARS
WARRANTY**

NEW REPLACEMENT
FOR ANY FAULTS *T&C



Contact Us

JETE WARRANTY POINTS

