



# NISSAN JUKE SPECIFICATIONS

## Specifications

	ST	ST+	ST-L	ST-L+	Ti
<strong>Engine</strong>					
HR10DDT - 1.0 litre DOHC Turbocharged in-line 3-cylinder, 4 valves per cylinder					
Power - 84 kW @ 5,250 rpm	•	•	•	•	•
Torque - 180 Nm @ 2,400 rpm					
Direct Injection Gasoline - Turbocharged (DIG-T)	•	•	•	•	•
Idle Stop/Start	•	•	•	•	•
<strong>Drivetrain</strong>					
Front engine/Front-wheel Drive	•	•	•	•	•
7-Speed Dual Clutch Transmission (DCT) Automatic	•	•	•	•	•
<strong>Brakes</strong>					
Anti-lock Braking System (ABS)	•	•	•	•	•
Electronic Brakeforce Distribution	•	•	•	•	•
Electronic Stability Programme	•	•	•	•	•
Brake Assist	•	•	•	•	•
Hill Start Assist	•	•	•	•	•
Intelligent Trace Control	•	•	•	•	•
Intelligent Ride Control	•	•	•	•	•
Front ventilated disc brakes	•	•	•	•	•
Rear drum brakes	•	•			
Rear solid disc brakes			•	•	•
Electric Park Brake with Auto Hold Function			•	•	•
<strong>Suspension/Steering</strong>					
MacPherson strut front suspension	•	•	•	•	•
Twist beam coil spring rear suspension	•	•	•	•	•
Front and rear stabiliser bars	•	•	•	•	•
<strong>Wheels/Tyres</strong>					
17" x 70" alloy wheels	•	•			
P215/60 R17 tyres	•	•			
19" x 75" alloy wheels			•	•	
19" x 75" Akari alloy wheels					•
P225/45 R19 tyres			•	•	•
Temporary Wheel	•	•	•	•	•
<strong>Exterior Features</strong>					
LED Daytime Running Lights	•	•	•	•	•
LED rear taillights	•	•	•	•	•
Pearl Black rear spoiler	•	•	•	•	•
Body coloured outside door handles	•	•	•	•	•
Pearl Black power-adjustable door mirrors with integrated indicators	•	•	•	•	•
Automatic LED headlights with High Beam Assist	•	•	•	•	•
Heated and auto-fold door mirrors	•	•	•	•	•
LED Fog lights		•	•	•	•
Privacy glass (2nd row, rear)					•
Pearl Black Shark Fin Antenna					•

Specifications

	ST	ST+	ST-L	ST-L+	Ti
Comfort/Convenience					
8" colour touch-screen display	•	•	•	•	•
Bluetooth® handfree phone system	•	•	•	•	•
Multi-function D-shape Steering Wheel	•	•	•	•	•
Steering wheel mounted Gearshift Paddles	•	•	•	•	•
Rear parking sensors	•	•	•	•	•
Speed-sensitive variable intermittent windshield wipers	•	•	•	•	•
12V power outlets (x1)	•	•	•	•	•
Cup holders (x2) and bottle holders (x4)	•	•	•	•	•
Tilt and telescopic steering adjustment	•	•	•	•	•
Welcome light	•	•	•	•	•
Cabin light - front and rear	•	•	•	•	•
Rear Luggage hooks (x2)	•	•	•	•	•
Luggage space light	•	•	•	•	•
Cruise control	•	•	•	•	•
Rearview camera with Predictive Path	•	•	•	•	•
Front and rear electric windows with One Touch Driver window control	•	•			
Driver and passenger sun visor with vanity mirror	•	•			
Jack knife key	•	•			
4.2" Advanced Drive-Assist® Display / TFT	•	•			
Air-conditioning	•				
Satellite navigation with live traffic monitoring		•	•	•	•
Auto air-conditioning		•	•	•	•
Front parking sensors		•	•	•	•
Front and rear electric windows with One Touch Driver and Passenger window control			•	•	•
Driver and Passenger seat back pockets			•	•	•
Driver and passenger sun visor with illuminated vanity mirror			•	•	•
Intelligent Key® with push button engine start			•	•	•
Rain-sensing front wipers			•	•	•
Intelligent Around View® Monitor with Moving Object Detection			•	•	•
Auto-dimming rearview mirror			•	•	•
Intelligent Cruise Control			•	•	•
7" Advanced Drive-Assist® Display / TFT			•	•	•
Drive Mode Selector (Sport/Standard/Eco)			•	•	•
Follow me home headlights					•
Illuminated JUKE entry kick plates					•

Seating/Appointments					
6-way manual adjustable driver seat	•	•	•	•	•
4-way manual adjustable front passenger seat	•	•	•	•	•
Adjustable rear headrests	•	•	•	•	•
Black headliner	•	•	•	•	•
60/40 split folding 2nd-row seat	•	•	•	•	•
Interior chrome door handles	•	•	•	•	•
Carbon fibre look instrument cluster and speaker surrounds	•	•	•	•	•
Leather-accented* shift knob and gear shift boot	•	•	•	•	•
Metallic grey centre console and front door trim	•	•	•	•	
Monoform black cloth seats	•	•			
Heated front seats		•	•	•	•
Black leather-accented* soft pad meter visor			•	•	•
Leather-accented* steering wheel			•	•	•
Dimmable Ambient Lighting (Gear console and door trim)			•	•	•
Driver and front passenger seat pockets			•	•	•
Driver and front passenger seat headrest diamond shape cutout			•	•	•
Black part cloth/part leather-accented* monoform seats			•		
Grey leather-accented* dashboard, knee pad, door trim and front armrest			•		
Black part cloth/part white and black leather-accented* monoform seats				•	
White leather-accented* dashboard, knee pad, door trim and front armrest				•	
Black chrome driver and front passenger headrest finisher				•	•
Black chrome centre console and front door trim				•	•
Black quilted leather-accented* and Alcantara® monoform seats					•
Black Alcantara® dashboard, knee pad, door trim and front armrest					•
Black and orange leather-accented* monoform seats					◦
Orange leather-accented* dashboard, knee pad, door trim and front armrest					◦

Specifications

Specifications	ST	ST+	ST-L	ST-L+	Ti
Audio/Entertainment					
Apple CarPlay®* & Android Auto™†	•	•	•	•	•
Voice Recognition	•	•	•	•	•
AM/FM/AUX audio system	•	•	•	•	•
Bluetooth® audio streaming	•	•	•	•	•
Digital radio (DAB+)		•	•	•	•
Front USB charging/Audio input port	•	•	•	•	•
Rear USB charging port			•	•	•
4 speakers	•	•			
6 speakers			•		
8 speaker Bose® Personal® Plus with headrest audio (driver and front passenger)				•	•
Safety/Security					
Driver and front passenger front impact SRS airbags	•	•	•	•	•
Driver and front passenger side impact SRS airbags	•	•	•	•	•
Front to rear SRS curtain airbags	•	•	•	•	•
Vehicle Dynamic Control with Traction Control System	•	•	•	•	•
3-point Emergency Locking Retractor front and rear seatbelts	•	•	•	•	•
Child restraint anchorage (ISOFIX outboard rear seats & tether. Centre seat tether only).	•	•	•	•	•
Height adjustable front seat belts	•	•	•	•	•
Seatbelt reminder (front and rear)	•	•	•	•	•
Alarm	•	•	•	•	•
Intelligent Emergency Braking with Pedestrian & Cyclist Detection	•	•	•	•	•
Forward-Collision Warning	•	•	•	•	•
Lane Departure Warning	•	•	•	•	•
Blind Spot Warning	•	•	•	•	•
Rear Cross Traffic Alert	•	•	•	•	•
Intelligent Driver Alert	•	•	•	•	•
Active Speed Limiter	•	•	•	•	•
Emergency Stop Signal	•	•	•	•	•
Traffic Sign Recognition	•	•	•	•	•
Intelligent Lane Intervention	•	•	•	•	•
Tyre Pressure Monitoring System (TPMS)					•
Dimensions (mm)					
Exterior					
Overall length	4,210				
Overall width (without mirrors)	1,800				
Overall height	1,595				
Wheelbase	2,636				
Track width (unladen) - front/rear	1,561/1,555				
Ground clearance (minimum)	172				
Turning circle (m)	11				
Interior (1st/2nd row)					
Head room (front/rear)	996/948				
Leg room (front/rear)	1,049/843				
Shoulder room (front/rear)	1,357/1,320				
Capacities					
Seating capacity	5				
Cargo capacity with 2nd row upright (litres)	422				
Cargo capacity with 2nd row folded (litres)	1,305				
Fuel tank (litres)	46				
Maximum towing capacity - braked (kg)*	1,250				
Maximum towing capacity - unbraked (kg)†	648				
Weights (kg)					
Kerb weight	1,251		1,274		
Gross vehicle mass	1730				
Fuel Economy					
Fuel economy (Litres/100km combined cycle)ⁱ	5.8				
CO2 emission (g/km)ⁱ	136				
Recommended Fuel type	95RON				

Not available    

•

 Standard    

○

 Optional

## NISSAN JUKE SPECIFICATIONS

### CHOOSE YOUR COLOUR



Fuji Sunset Red



Ivory Pearl<sup>#</sup>



Burgundy<sup>~</sup>



Platinum<sup>#</sup>



Gun Metallic<sup>#</sup>



Pearl Black<sup>#</sup>



Vivid Blue<sup>~</sup>



Arctic White<sup>~</sup>

In some cases, the printed colours may vary from the actual paint colours.

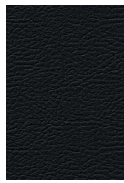
<sup>#</sup>Premium paint available at extra cost. <sup>^</sup>Not available on ST-L<sup>+</sup> or Ti models. <sup>~</sup>Not available on Ti with Energy Orange interior

## NISSAN JUKE SPECIFICATIONS

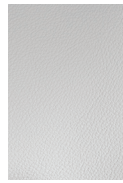
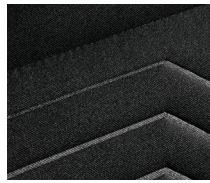
### CHOOSE YOUR SEAT TRIM



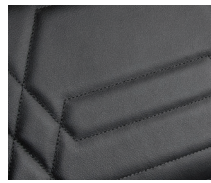
ST and ST+  
Black embossed fabric / black fabric



ST-L  
Black part fabric and part leather-accented\*



ST-L+  
Black part cloth/part white and black leather-accented\*



Ti STANDARD  
Black quilted leather-accented\* and black Alcantara\*

### WHEELS



ST & ST+ only  
17" Alloy Wheel



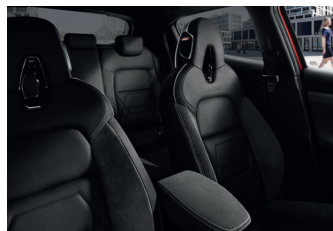
ST-L & ST-L+ only  
19" Alloy Wheel



Ti only  
19" Alloy Wheel

### DIMENSIONS

- A: Wheelbase: 2,636 MM
- B: Overall length: 4,210 MM
- C: Overall width: 1,800 MM
- D: Overall height: 1,595 MM



Ti STANDARD  
Black quilted leather-accented\* and black Alcantara\*



Ti OPTIONAL (Energy Orange)  
Black and orange leather-accented\*

Minor trim variations may occur from time to time.

\* Leather accented features and upholstery may contain synthetic material.

\* Towing capacity is subject to towbar/towball capacity and is based on the fitment of a Genuine Nissan towbar. Towing capacity figure described is a maximum figure. Actual towing capacity depends on the laden mass of the vehicle, driving conditions, fitment of any accessories or towing equipment limitations including the maximum towball download. The maximum towball download for this vehicle is 75kg.

^ Figures tested in accordance with ADR81/02 (combined test). Figures stated for the purposes of comparison amongst vehicles only. It is unlikely that this fuel consumption figure will be achieved in real world driving conditions. Actual fuel consumption and CO2 emissions depends on factors such as traffic conditions, vehicle condition, how you drive and any accessories fitted.

† CarPlay is a registered trademark of Apple Inc. Android Auto is a trademark of Google LLC. Compatible device and USB connection required.



## FINANCIAL SERVICES

For more information please visit [nissan.com.au/owners](https://nissan.com.au/owners), ask your Nissan Dealer or phone 1800 035 035 during normal AEST business hours.

All illustrations, information and specifications presented and referred to in this brochure were correct at the time this brochure was approved for printing. The colours in the photographs may vary from actual colours. However, Nissan Motor Co (Australia) Pty. Ltd. reserves the right, subject to the laws of Australia and/or the regulations of any competent authority which may apply from time to time, at its discretion at any time and without prior notice, to discontinue or change the models, features, specifications, designs and prices of the products referred to in this brochure and any optional equipment therefore without incurring any liability whatsoever to any purchaser or prospective purchaser of any such products. Some of the items referred to herein are optional at extra cost. Some options may be required in combination with other options. Always consult your Nissan Dealer for the latest information on models, specifications, features, prices, options and availability. Nissan Motor Co (Australia) Pty. Ltd. ACN 004 663 156. Updated June 2021. NIS4101

Follow us: @Nissan\_Aus

Like us: Nissan Australia

Check out: NissanAustralia Channel

