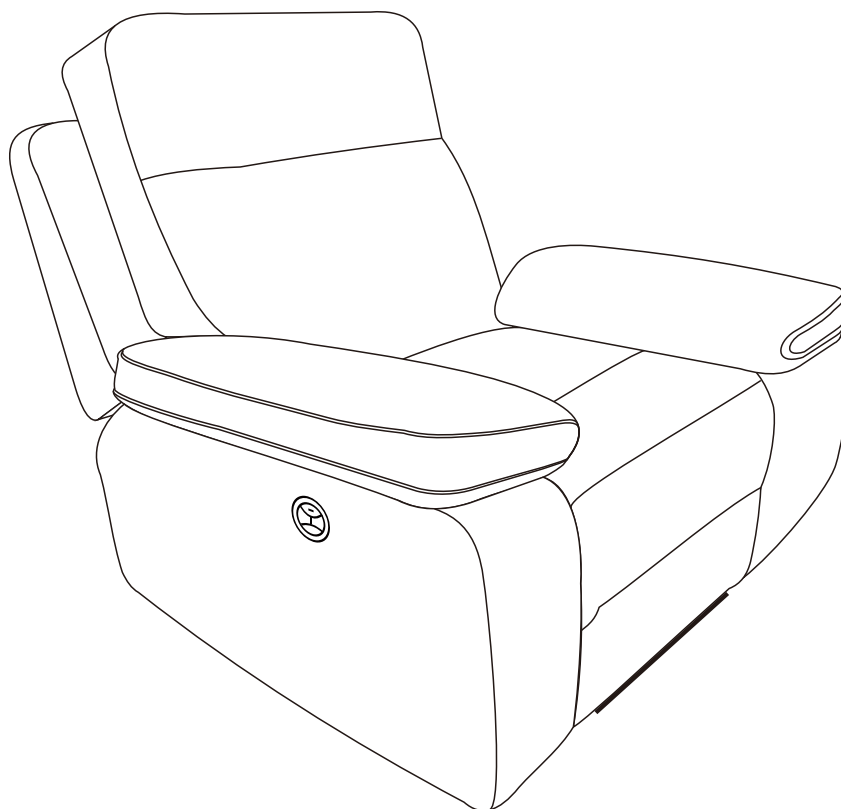


WE HAVE YOU IN MIND, LET US SERVE YOU!

Questions? Issues?

CONTACT US



IMPORTANT

Thank you very much for choosing our products.

Please take time to read these instructions thoroughly and follow each step carefully for safe and easy operation. Keep this manual for future reference.

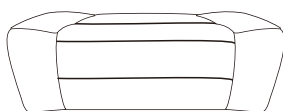
We would like to hear from you with any comments or suggestions. You can send the email to service@bdeus.com to get tech.assistance or to place your replacement part order form.

ASSEMBLY INSTRUCTION 9079

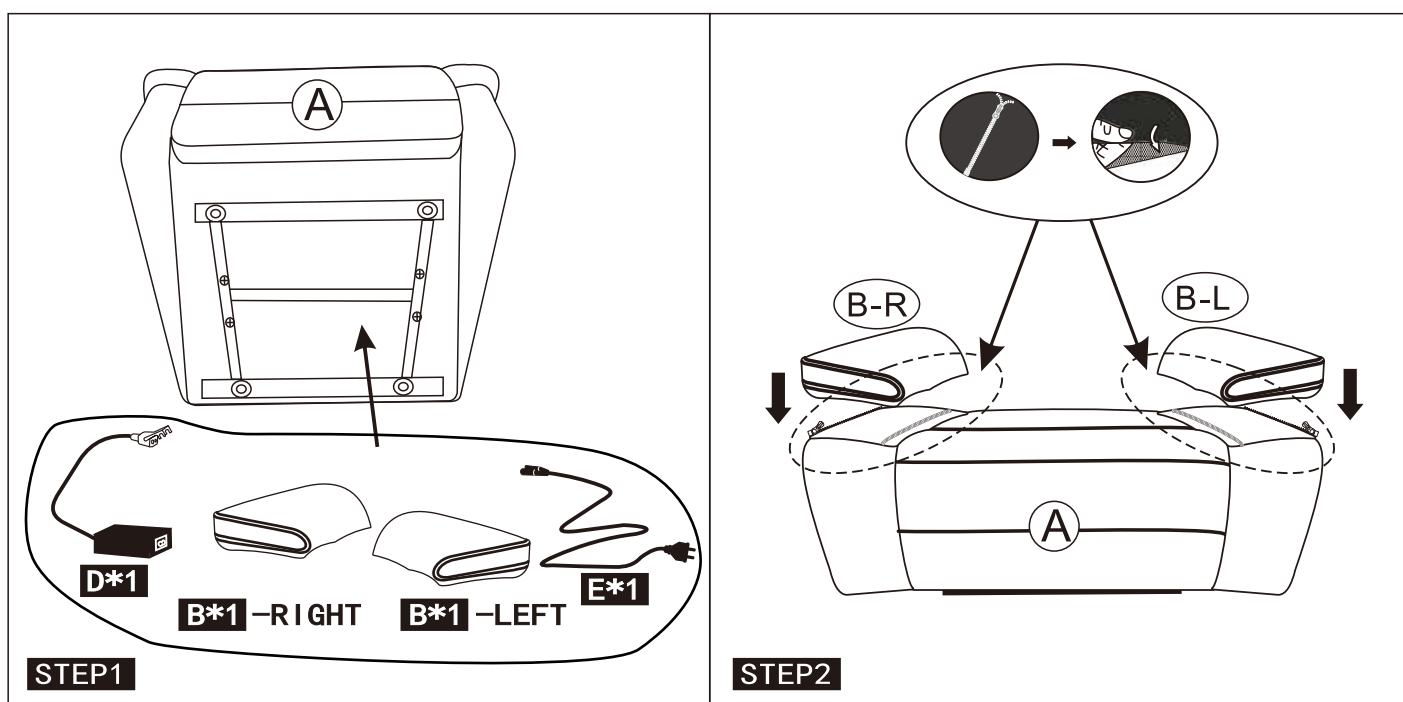
Installation Workers

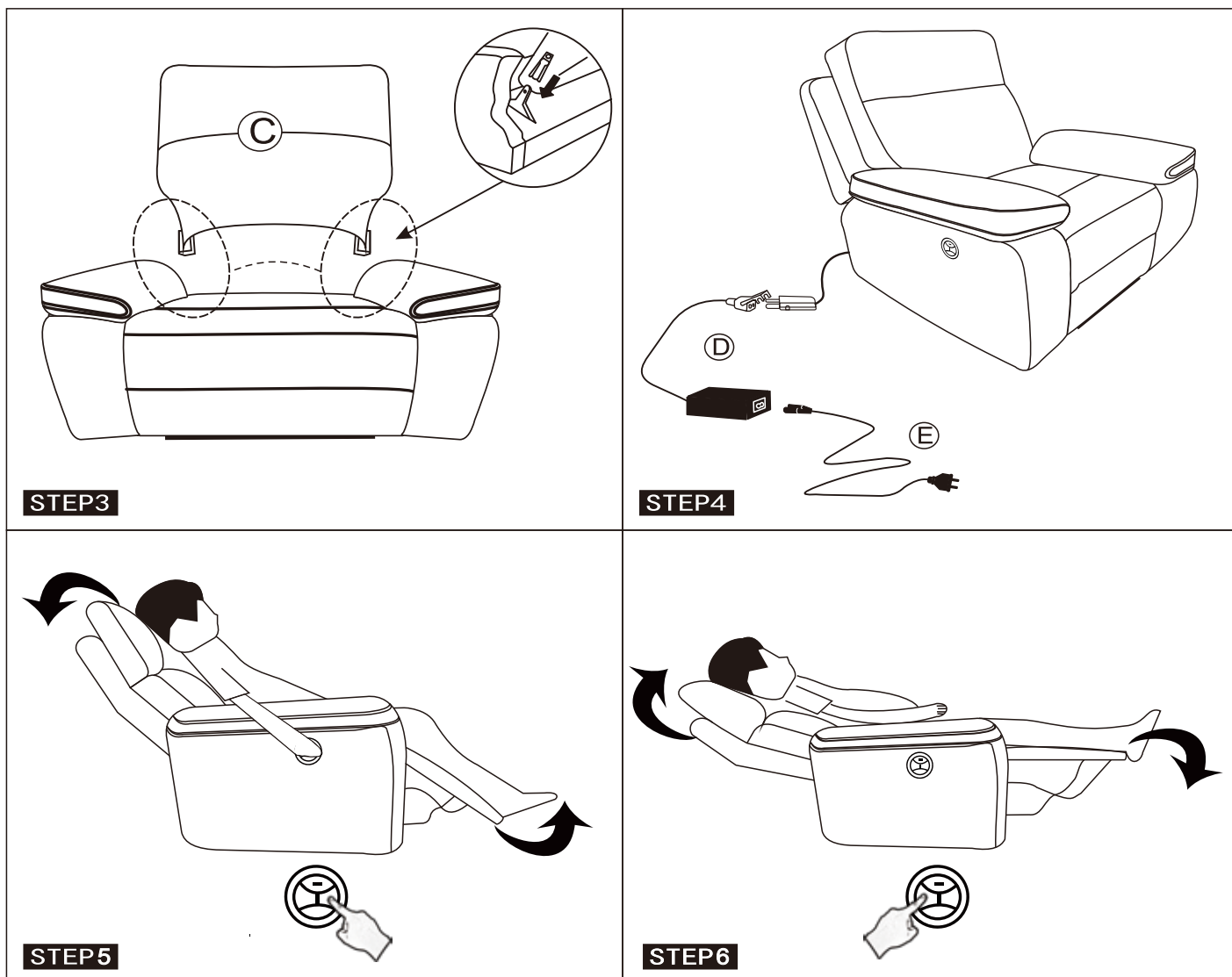


Materials

**A*1****B*1 -RIGHT****B*1 -LEFT****C*1****D*1****E*1**

Installation Steps





CARE AND MAINTENANCE

- We recommend vacuuming the loose cushions & upholstery regularly to keep your sofa clean from dust & dirt.
- Extra care to avoid placing your sofa in direct sunlight to avoid aging of the fabric color.
- Treat stains immediately, blot up as much of the spill as possible with a clean, dry, white cloth. Do not rub stains into the fabric.
- Apply a small amount of cleaner to the stain area and gently rub it with your fingertips and lightly clean with a clean damp fabric. Continue to apply cleaner sparingly and blot until the stain no longer transfers onto the cloth. This may take several attempts. When you've removed as much of the stain as possible, blot any remaining cleaner from the fabric.
- An annual professional cleaning will keep your upholstered furniture looking its best.

ONE-YEAR LIMITED WARRANTY

This limited warranty is extended to the original purchaser and applies to defects in material. And workmanship of your item provided the item is maintained with care and used only for personal, residential purposes.

The manufacturer warrants this item is free of defects in material and workmanship for a period of one year. If any defect is found, please email our customer service department at service@bdeus.com for help. The manufacturer will not cover transportation or delivery costs or compensate the individual or any outside party for assembling or disassembling the product.