

# **VEVOR<sup>®</sup>**

**TOUGH TOOLS, HALF PRICE**

Technical Support and E-Warranty Certificate [www.vevor.com/support](http://www.vevor.com/support)

## **Digital Kiosk**

### **USER'S GUIDE**

**MODEL:DC-A43ZN-A**

We continue to be committed to provide you tools with competitive price.

"Save Half", "Half Price" or any other similar expressions used by us only represents an estimate of savings you might benefit from buying certain tools with us compared to the major top brands and does not necessarily mean to cover all categories of tools offered by us. You are kindly reminded to verify carefully when you are placing an order with us if you are actually saving half in comparison with the top major brands.

# VEVOR<sup>®</sup>

TOUGH TOOLS, HALF PRICE

## Digital Kiosk

MODEL:DC-A43ZN-A






### NEED HELP? CONTACT US!

Have product questions? Need technical support? Please feel free to contact us:

**Technical Support and E-Warranty Certificate**  
**[www.vevor.com/support](http://www.vevor.com/support)**

This is the original instruction, please read all manual instructions carefully before operating. VEVOR reserves a clear interpretation of our user manual. The appearance of the product shall be subject to the product you received. Please forgive us that we won't inform you again if there are any technology or software updates on our product.

	<p><b>Warning-</b>To reduce the risk of injury, user must read instructions manual carefully.</p>
	<p><b>FCC Information</b></p> <p><b>CAUTION:</b> Changes or modifications not expressly approved by the party responsible for compliance could void the user's authority to operate the equipment!</p> <p>This device complies with Part 15 of the FCC Rules. Operation is subject to the following two conditions:</p> <ol style="list-style-type: none"> <li>1) This product may cause harmful interference.</li> <li>2) This product must accept any interference received, including interference that may cause undesired operation.</li> </ol> <p><b>WARNING:</b> Changes or modifications to this product not expressly approved by the party responsible for compliance could void the user's authority to operate the product.</p> <p><b>Note:</b> This product has been tested and found to comply with the limits for a Class B digital device pursuant to Part 15 of the FCC Rules, These limits are designed to provide reasonable protection against harmful interference in a residential installation.</p> <p>This product generates, uses and can radiate radio frequency energy, and if not installed and used in accordance with the instructions, may cause harmful interference to radio communications. However, there is no guarantee that interference will not occur in a particular installation. If this product does cause harmful interference to radio or television reception, which can be determined by turning the product off and on, the user is encouraged to try to correct the interference by one or more of the following measures.</p> <ul style="list-style-type: none"> <li>· Reorient or relocate the receiving antenna.</li> <li>· Increase the distance between the product and receiver.</li> <li>· Connect the product to an outlet on a circuit different from that to which the receiver is connected.</li> </ul>

	<ul style="list-style-type: none"> <li>· Consult the dealer or an experienced radio/TV technician for assistance.</li> </ul>
	<p><b>CORRECT DISPOSAL</b></p> <p>This product is subject to the provision of European Directive 2012/19/EC. The symbol showing a wheeled bin crossed through indicates that the product requires separate refuse collection in the European Union. This applies to the product and all accessories marked with this symbol. Products marked as such may not be discarded with normal domestic waste, but must be taken to a collection point for recycling electrical and electronic devices</p>

## IMPORTANT SAFEGUARDS



**WARNING:** Read all safety warnings, instructions, illustrations and specifications provided with this thermal receipt printer. Failure to follow all instructions listed below may result in electric shock, fire and/or

serious injury.

1. Do not use this product in areas where it may be exposed to water or other liquids.
2. Unplug this product from the wall outlet before cleaning. Do not use liquid or aerosol cleaners. Use a damp cloth for cleaning.
3. To reduce the risk of electric shock, do not disassemble this product. Take it to qualified service personnel when service or repair work is required. Opening or removing covers -like the rear cover plate- may expose you to dangerous voltages or other risks. Incorrect re-assembly can cause electric shock when the appliance is subsequently used.
4. If the supply cord is damaged, it must be replaced by a special cord or assembly available from the manufacturer or its service agent. Only use the cable provided with the unit. The use of other cables may result in electric shock, fire or cause serious damage to the unit.

5. Do not operate the unit in areas with high temperature or high humidity since it may prevent it from working correctly.
6. When unplugging the power plug, do not pull it by the cord but rather grip the plug to pull it out. Not following these instructions may result in electric shock, fire or damage to the unit.
7. Do not use the unit if the power cord is damaged or if the plug socket contact is loose. Not following these instructions may result in electric shock, fire or other hazards.
8. Do not place heavy objects over the cord and do not bend it excessively since it could get damaged. Not following these instructions may result in electric shock, fire or other hazards.
9. When not using the unit for a long period of time, remove the power plug from the wall outlet.
10. This equipment is not suitable for use in locations where children are likely to be present.

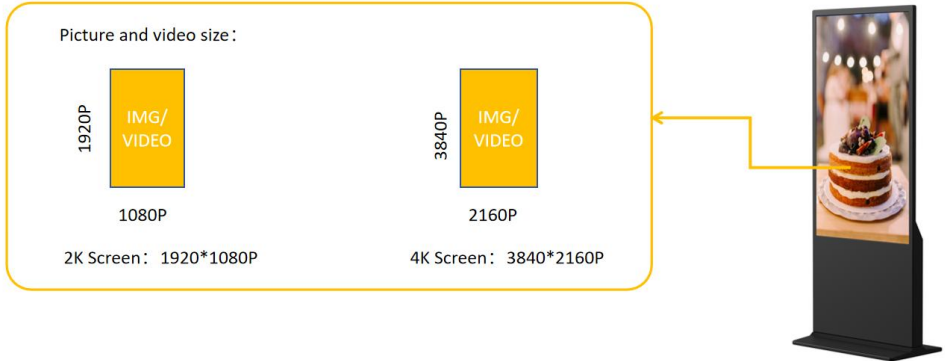
## **SAVE THESE INSTRUCTIONS**

### **INSTRUCTIONS**

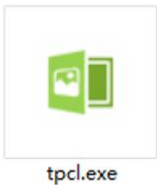
- The upgraded screen playback design perfectly solves the problem of playing pictures and videos at the same time and realizes the intelligent split-screen function, which makes your ads more attractive.
- Using Android 11 OS with powerful speakers, supports U disk plug-and-play.
- The digital kiosk is widely used in commercial centers, airports, hospitals, restaurants and all kinds of stores.

## Easy to publish your advertisement by USB disk

● Prepare the pictures and videos which you want to display. (make sure the pictures and videos is suitable for screen that can get perfect visual experience).



● Copy the software " tpcl.exe " to the document which your picture is already prepared.

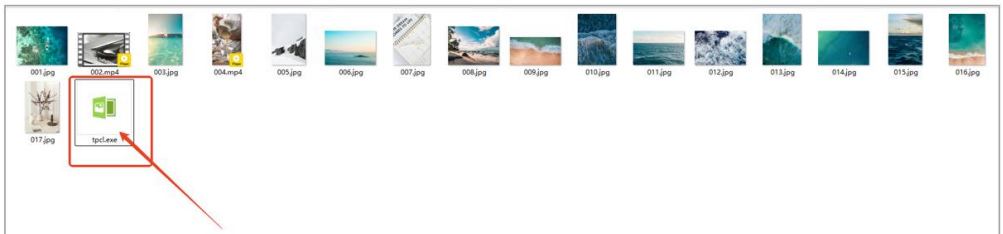


tpcl.exe

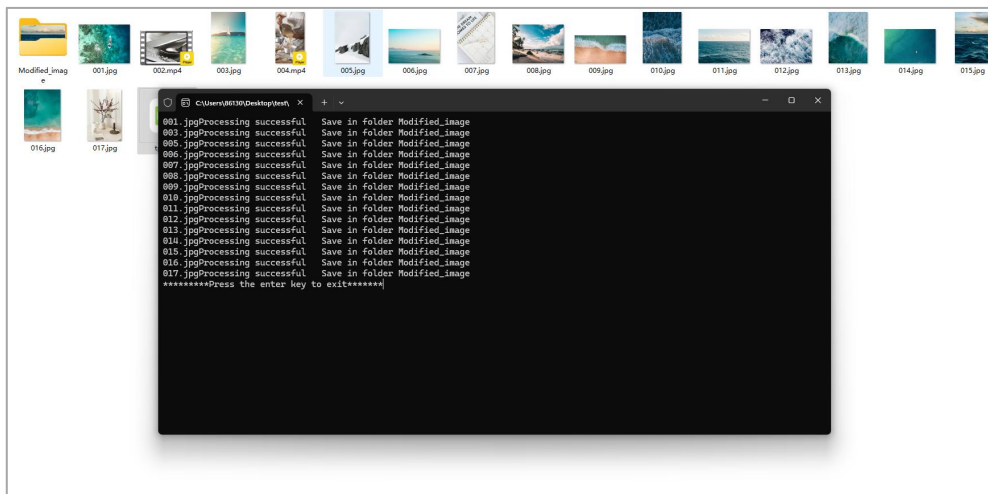
" tpcl.exe " can be found in the USB disk which in the accessory bag.

**NOTE: " tpcl.exe " is a picture dealing software that can make sure your picture can be identify by digital kiosk.**

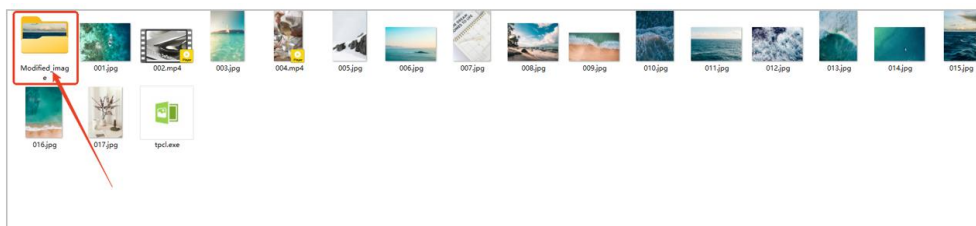
● Run the "tpcl.exe" and the picture will be deal automatically.



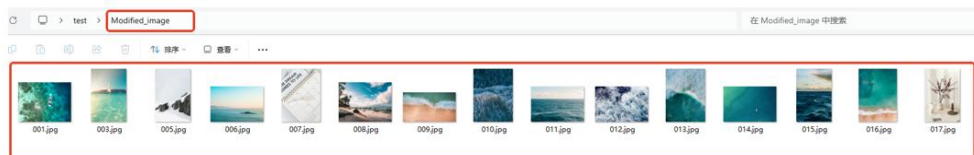
●When the picture dealing completed, press the “Enter” key to exit.



●After picture dealing completed, it will create a new file “Modified\_image” which the dealing pictures all in it.



●Copy the picture to the USB disk.



Notice: Please copy the pictures which in the file “**Modified\_image**”

- Insert the USB disk to the digital kiosk.



- Waiting for auto playing.

## Publish advertisement by APP

### Send program by APP

#### Step 1 Download the app

Scan the following QR code on your phone to download the Ledart



#### Step 2 Establish network connections

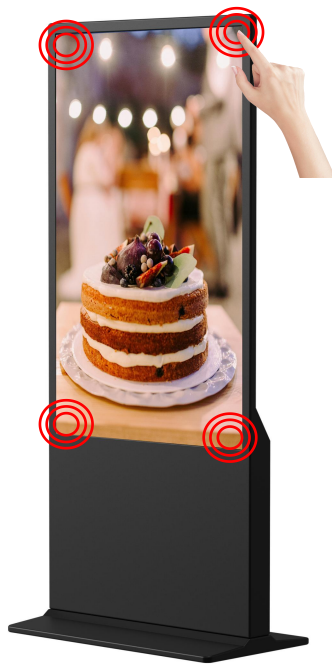
The phone connects to the device's Wi-Fi hotspot. Or both the device and the phone are connected to the same Wi-Fi network

#### Step 3 Edit program

Create a program that matches the device, and add videos, pictures and other materials to the program.

#### Step 4 Send programs to devices





- Click the corner or screen for 4 times to setting mode.

## Publish advertisement by Website

### Send program via cloud platform

#### Step 1 Set the device to cloud networking mode

Go to the menu page, set the device to cloud networking mode in the system mode, and bind the relative server address and user. XiaoHui cloud server Address:

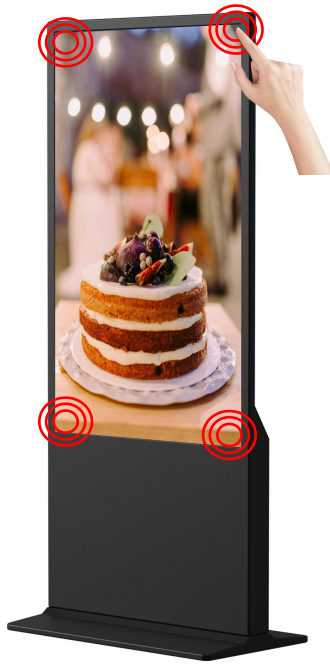
Domestic: <http://www.led-cloud.cn>, Overseas: <http://www.led-cloud.com>

#### Step 2 Login to the cloud platform

Open the server address in the browser, enter username and password to login to the cloud platform.

#### Step 3 Edit program

Create a program that matches the device, and add videos, pictures and other materials to the program.



- Click the corner or screen for 4 times to setting mode.

## Operation instruction

- Navigation bar function keys

Swipe up at the bottom center of the screen to open the navigation bar.

**No programs can be played in the device, just send new program via the following ways**

**Send programs via cloud platform**

• **Operation Steps**

1. Login cloud platform
2. Create and edit programs
3. Send programs to the device

• **Note**

The device mode needs to be adjusted to networking mode and associated with the cloud platform account. Cloud server address: <http://www.led-cloud.cn> or <http://www.led-cloud.com> (international version)

**Send programs via LedArt**

• **Operation Steps**

1. Run mobile APP LedArt
2. Create and edit programs
3. Send programs to the device

• **Note**

The device mode needs to be adjusted to stand alone mode, and the mobile phone is in the same local area network.

**Play programs via U-disk/SD card**

• **Operation Steps**

1. Save programs into U-disk or SD card
2. Insert U-Disk or SD Card
3. Playback programs automatically

• **Note**

The device mode needs to be adjusted to stand alone mode, and the file system format of the U-disk/SD card needs to be FAT32

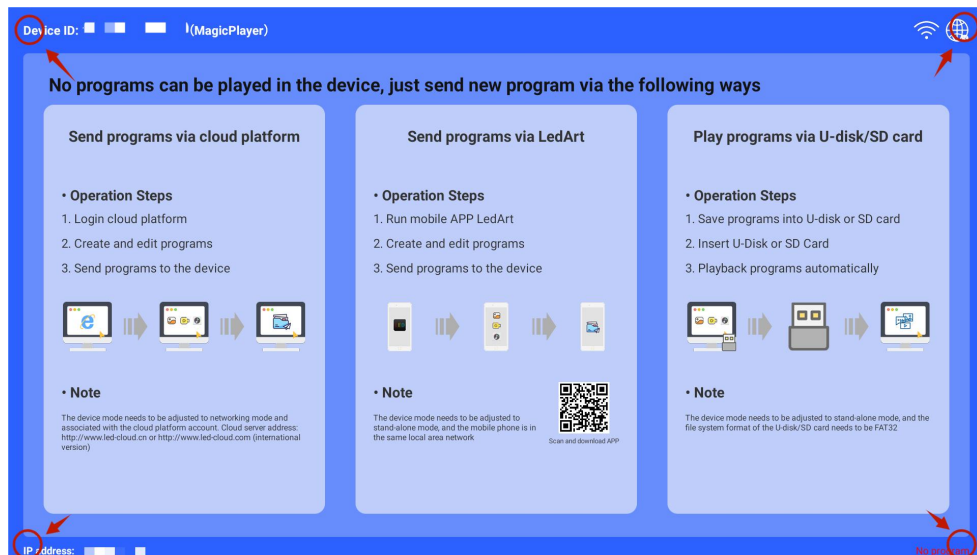
IP address: 0.0.0.0

Navigation bar: A red arrow points to a bar at the bottom center containing five icons: a left arrow, a right arrow, a square, a circle, and a right arrow.

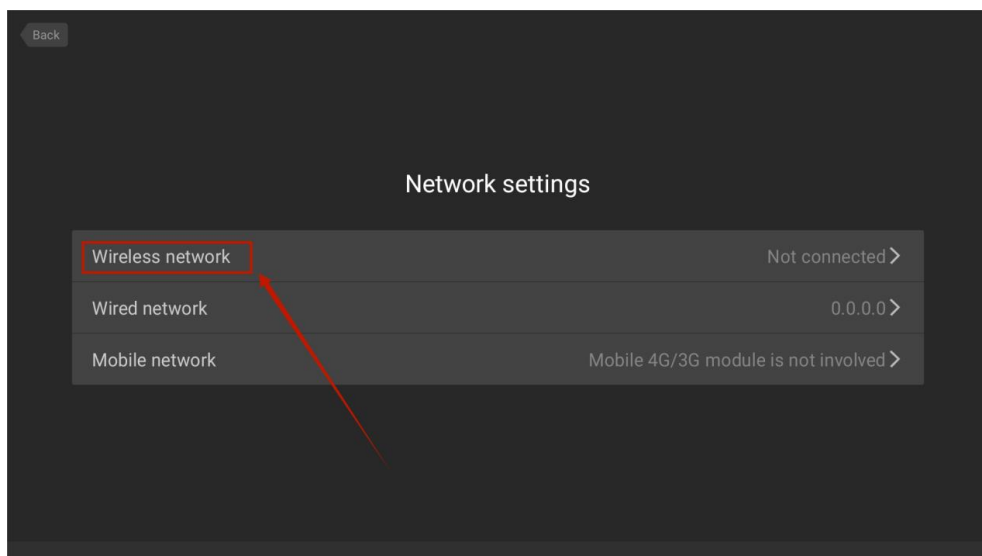
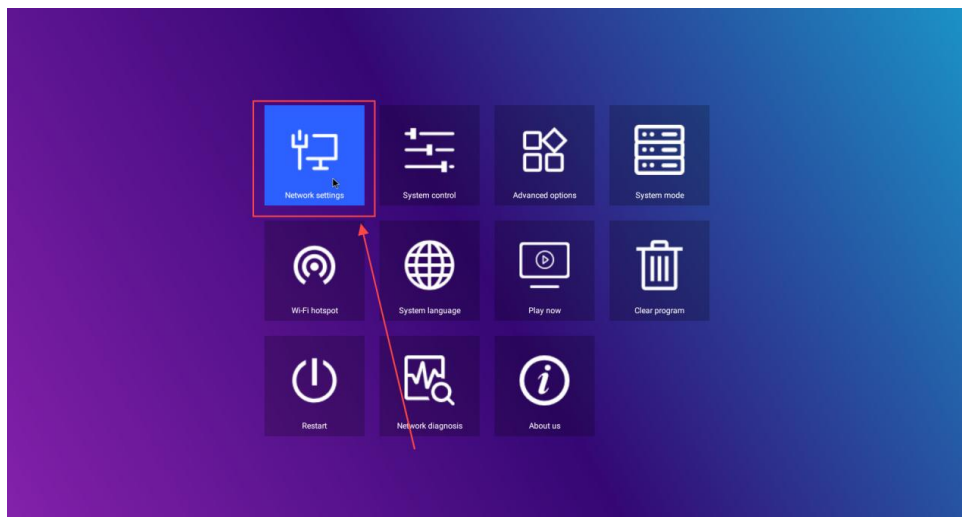
function keys:  Volume,  Back,  Home,  Switch applications

## ● Connect network

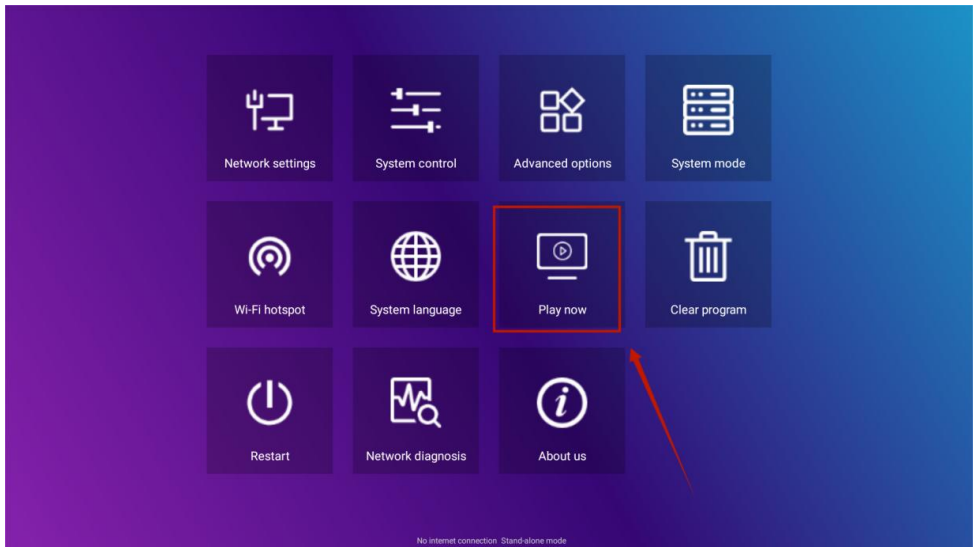
Play any of the four corners of the software interface, touch and click 4 times to enter the system settings




Click to enter->Network settings->Wireless network,select the WIFI to connect.



After connecting, click "Play now" to return to the playback interface.



## ● Volume control


Slide up the middle position at the bottom of the screen, open the navigation bar, click the volume button , and the volume size can be adjusted by popping up on the right side

**No programs can be played in the device, just send new program via the following ways**

**Send programs via cloud platform**

• Operation Steps

1. Login cloud platform
2. Create and edit programs
3. Send programs to the device




• Note

The device mode needs to be adjusted to networking mode and associated with the cloud platform account. Cloud server address: <http://www.led-cloud.cn> or <http://www.led-cloud.com> (international version)

**Send programs via LedArt**


• Operation Steps

1. Run mobile APP LedArt
2. Create and edit programs
3. Send programs to the device



• Note

The device mode needs to be adjusted to stand-alone mode, and the mobile phone is in the same local area network.




Scan and download APP

**Play programs via U-disk/SD card**

• Operation Steps

1. Save programs into U-disk or SD card
2. Insert U-Disk or SD Card
3. Playback programs automatically



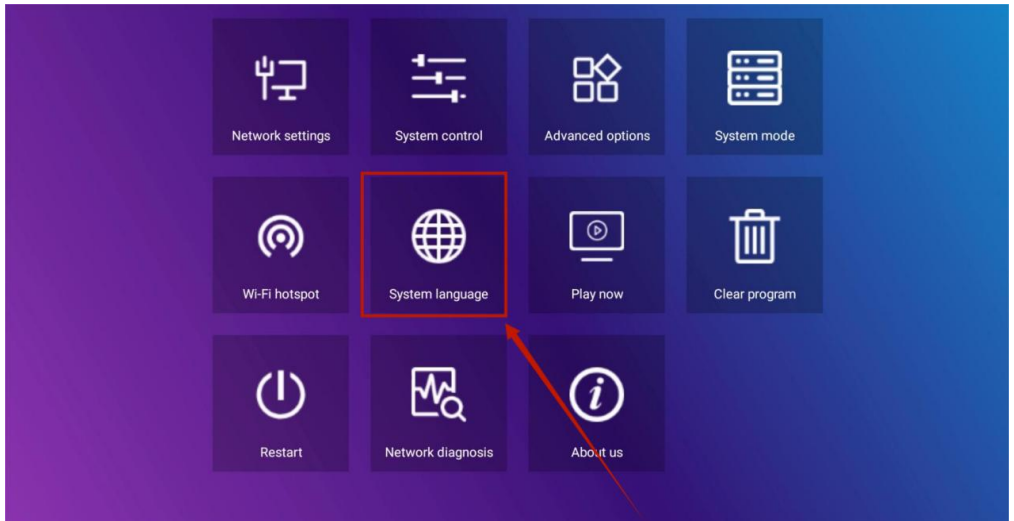
• Note

The device mode needs to be adjusted to stand-alone mode, and the file system format of the U-disk/SD card needs to be FAT32

IP address: 0.0.0.0

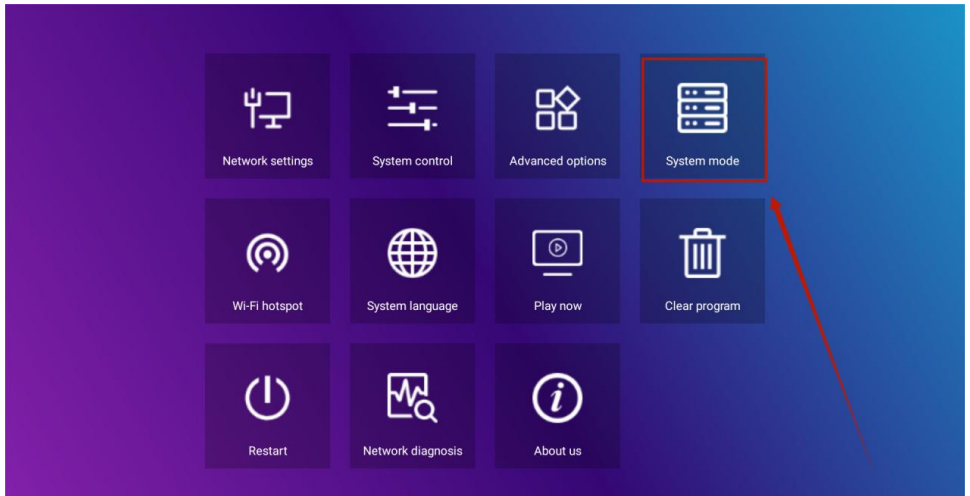
## ● Software language selection

## System settings->System language

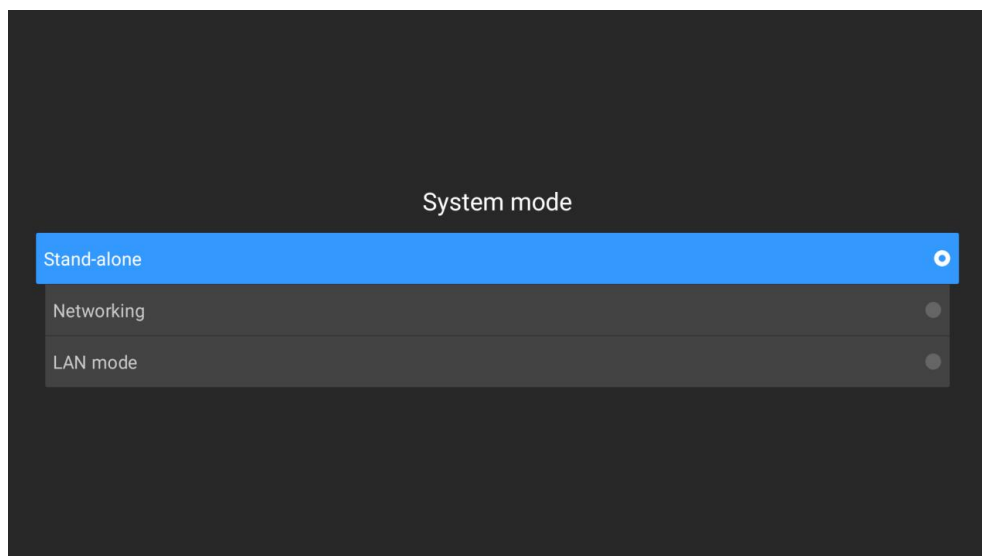
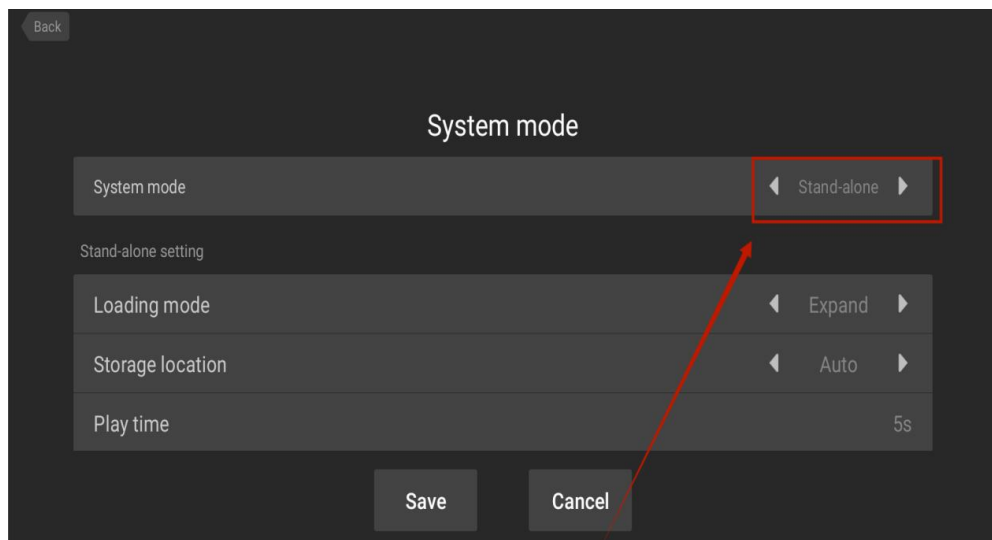


### ●Advertisement mode selection

## System settings->System mode



Click on system mode to select the mode.



**Stand-alone:** Stand-alone mode is played by inserting a USB drive (default setting).

**Networking:** You can remotely control the publication of content (more information can be found in the video operation).

## ● Timing switch machine

Enter Magic Player Setting -> system control-> switch machine settings, as shown in figure:



① Click on System Control



② Set timed power on/off

## ● U disk playback setting

Magic Player Setting -> System Mode-> Select Stand-alone Mode:



① Click on SystemMode



② Select single machine mode

There are two loading modes:

- ① One is the copy mode, which copies the pictures or videos in the root directory of the U disk into the system and then plays them.
- ② 2) One is extended mode, which directly plays pictures or videos in the root directory of the U disk.



## Installation Steps



Step A: Take out six screws and a hexagonal screwdriver.



Step B: Rotate the screen and lie down to align with the base.



Step C: Tighten the six screws.



Step D: Rotate the screen upright and plug it into the power supply.

## Accessories List

User's Guide \* 1,  
Power cord \* 1,  
USB flash drive \* 1,  
Screw \* 8,  
Roller \* 4,  
Key \* 1.

## Matters Need Attention

- If there is a hand pressing the screen, the touch screen operation will not be responded to at this time.
- Scan the QR code for more installation and usage video information.



**Manufacturer:** Shanghaimuxinmuyeyouxiangongsi

**Address:** Shuangchenglu 803nong11hao1602A-1609shi, baoshanqu, shanghai 200000 CN.

**Imported to AUS:** SIHAO PTY LTD. 1 ROKEVA STREETEASTWOOD NSW 2122 Australia

**Imported to USA:** Sanven Technology Ltd. Suite 250, 9166 Anaheim Place, Rancho Cucamonga, CA 91730

<b>UK</b>	<b>REP</b>	YH CONSULTING LIMITED. C/O YH Consulting Limited Office 147, Centurion House, London Road, Staines-upon-Thames, Surrey, TW18 4AX
-----------	------------	--

<b>EC</b>	<b>REP</b>	E-CrossStu GmbH Mainzer Landstr.69, 60329 Frankfurt am Main.
-----------	------------	--

**VEVOR<sup>®</sup>**

**TOUGH TOOLS, HALF PRICE**

**Technical Support and E-Warranty Certificate**

**[www.vevor.com/support](http://www.vevor.com/support)**