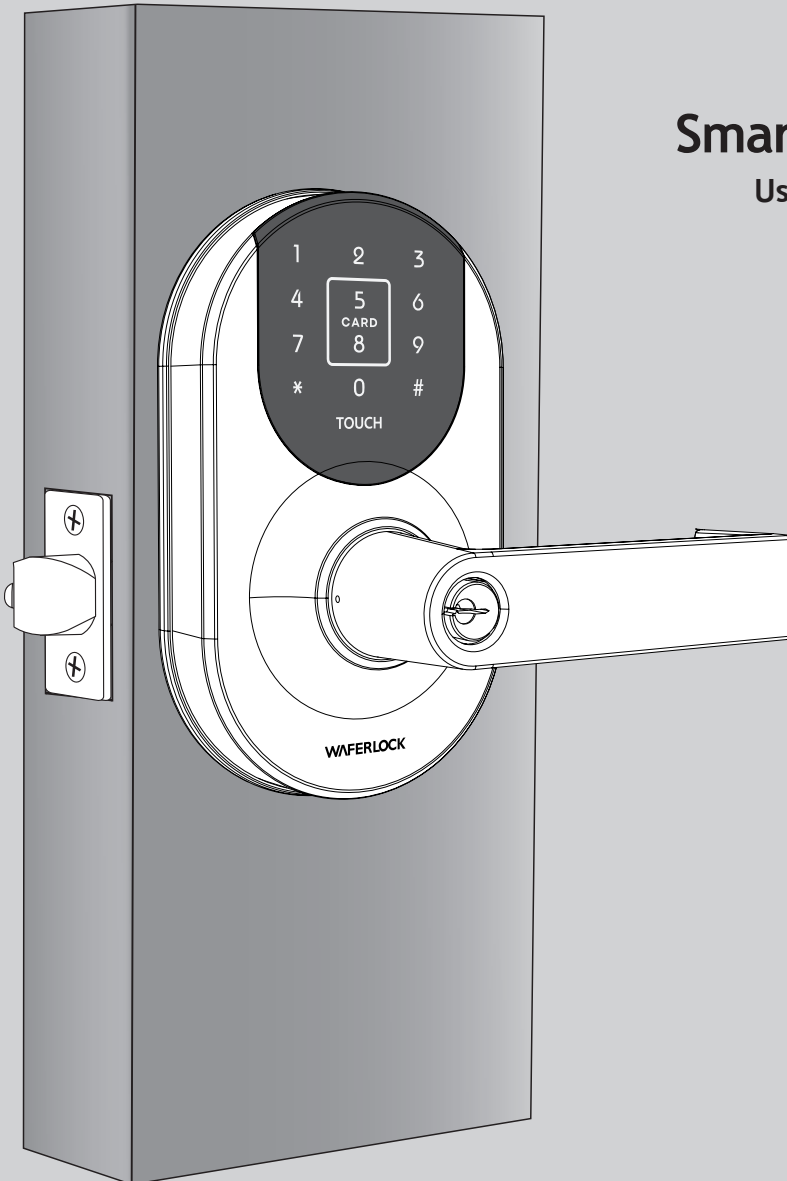


L310

Smart Lock

User Manual



Content

02

■

.....

Specification

03

■

.....

Appearance

04

■

.....

Enroll Programming Card

05

■

.....

Lock Setup with App

STANDALONE MODE PROGRAMMING INSTRUCTION

06

■

.....

Enroll New User Credentials

07

■

.....

Unlock with User Credentials

08

■

.....

Remove All User Credentials

09

■

.....

Enroll New Passcode

10

■

.....

Unlock with Passcode

11

■

.....

Remove All Passcode

12

■

.....

Remove Individual Passcode

13

■

.....

Volume Setting

14

■

.....

Program Door Opening and Closing Mode

15

■

.....

Passcode Anti-Peeping Setup

16

■

.....

Low Battery Warning

17

■

.....

Reminder

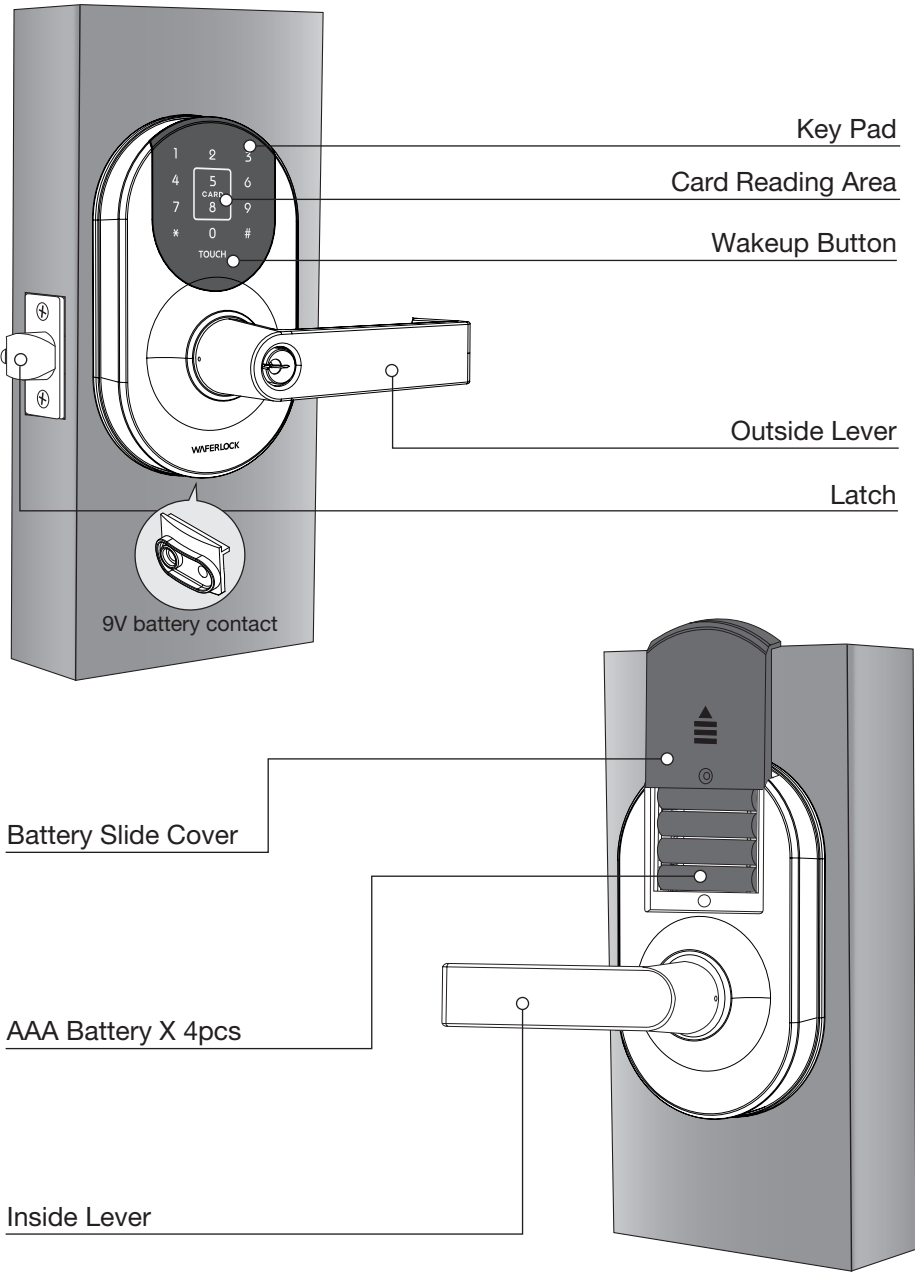
Specification

- Front / Back Escutcheon Dimension (L x W x H) :
3 7/8" x 1" x 6 2/3" (99.4 x 23.8 x 169.4 mm)
- Access Solutions : Key Card / Passcode / App / Mechanical Key
- Acoustic Low Power Warning
- Support 9V External Power Supply
- Door Thickness : 1 3/8" - 2" (35mm-50mm)
- Mechanical Key Override
- Transponder : Mifare Cards
- IP54
- Alkaline Battery : (AAA) 1.5V x 4 pcs

Remark

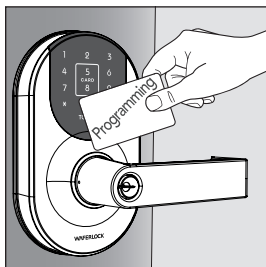
If the product will not be used for more than two months, please remove the battery to avoid battery leakage and damage to the product.

Appearance



Enroll Programming Card

Programming Card must be used first prior to any other steps.



Present the programming card to reading area. Beep sound and blue light blinks in every seconds during process, and 1 long beep / blue light blinks 3 times after 10 seconds means the programming card setup is successful.

Remark

- Before enrolling programming card, L310 is in construction mode and is able to operate by any Mifare card and default passcode 123456.
- If you hear 2 beeps / blue light blinks twice, it means the programming card enrollment failed.
- A lock can be enrolled one programming card only; the programming card cannot be used to unlock.
- Once programming card enrolled successfully, the lock can be operated with authorized credential and passcode only.

Lock Setup with App

Follow below steps to get your lock setup with App supported by **WAFERKEY**. You can also use the mobile App to set up your lock step-by-step and access installation videos.

► Step 1

Download the App by searching “**WAFERKEY**” in the App Store (iOS) or on Google Play (Android).



► Step 2

Open the App, simply use a Third Party Login or register a **WAFERKEY** account.

► Step 3

Make sure the lock has been already programmed by the programming card. Turn on Bluetooth on your smartphone, stay near the lock and follow the instruction in the App.

► Step 4

Pair the lock in the App and start to use it.

Remark

- The **WAFERKEY** App works on iPhone with iOS 13.6 or later, or devices with Android 8.0 or later.
- Be sure to accept any available firmware update.
- Please refer to the instruction in **WAFERKEY** App for more information.

DON'T WANT TO USE THE APP?

Please go to page P6-15 for manual programming instructions for Standalone Mode.

Questions about your new lock?

Let us help you!

support@waferlock.com

STANDALONE MODE PROGRAMMING INSTRUCTION

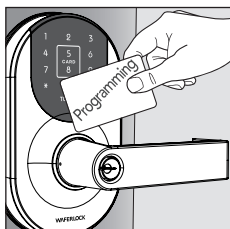
WARNING

Standalone Mode programming functions (Programming Card) are NOT available after the lock is paired with mobile App! If you would like to use Standalone Mode, please unpair the lock via **WAFLERKEY** App.

Please remember to enroll Programming Card, referring to the instruction on P04.

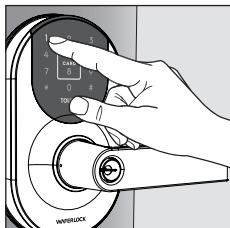
Enroll New User Credentials

► Step 1



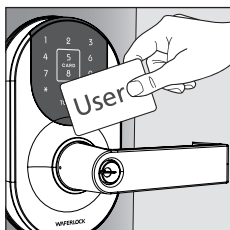
Present the programming card to reading area, number **1**, **2**, and **3** on keypad will blink with 2 beep sounds.

► Step 2



Press “**1**” to enter the programming mode, and blue light will blink.

► Step 3



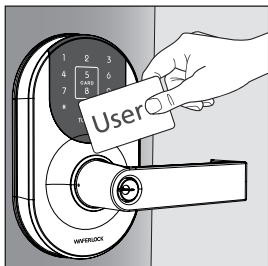
When blue light blinks, present credential to enroll for access. There will be **3** beep sounds if successful.

Remark

- You could enroll user credentials continuously when the blue light blinking.
- The credentials (including passcode) can be set up to maximum 2,000 sets. There will be 10 short beep sounds with blue light blinks 3 times when reaching maximum number.

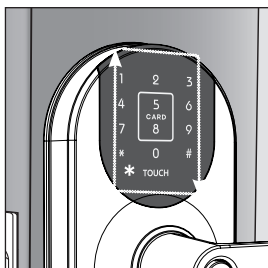
Unlock with User Credentials

► Step 1



Present the user credential to reading area.

► Step 2



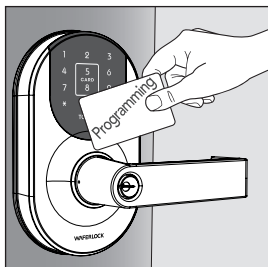
The keypad led run clockwise when access granted.

Remark

- Remark: When blue light blinks twice means the user credential has no access right.

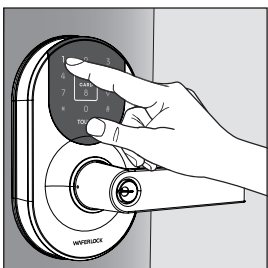
Remove All User Credentials

► Step 1



Present the programming card to reading area, number **1**, **2**, and **3** on keypad will blink with **2** beep sounds.

► Step 2



Press "**1**" to enter the programming mode, and blue light will blink.

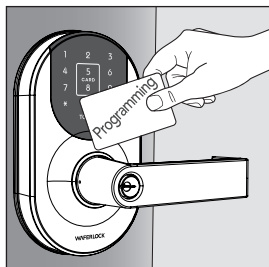
► Step 3



Press the "**TOUCH**" key, keypad lights up and then press *****#**. While a long beep sound and blue light will blink **5** times for successful removed all user credentials.

Enroll New Passcode

► Step 1



Present the programming card to reading area, number **1**, **2**, and **3** on keypad will blink with **2** beep sounds.

► Step 2



Press “**2**” to enter the programming mode, and the keypad lights up.

► Step 3



Key in only 6 digits passcode and press # as end. There will be **3** beeps if successful.

Remark

- To continue enroll new passcode, press “TOUCH” key and repeat step 3.
- The credentials (including passcode) can be set up to maximum 2,000 sets. There will be 10 short beep sounds with blue light blinks 3 times when reaching maximum number.

Unlock with Passcode

► Step 1



Press **"TOUCH"** key and the keypad lights up.

► Step 2



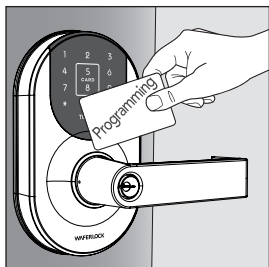
Key in **6** digits passcode and press **#**, the Led will run clockwise when access granted.

Remark

- When blue light blinks twice means the passcode has no access right.
- Keypad will be locked automatically for 3 minutes when passcode without access right has been entered 5 times. The keypad will response again after 3 minutes OR using other user credentials to unlock.
- If the passcode is key in incorrect during the entry, press again **"TOUCH"** key then to re-enter the 6 digits passcode.

Remove All Passcode

► Step 1



Present the programming card to reading area, number **1**, **2**, and **3** on keypad will blink with **2** beep sounds.

► Step 2



Press “**2**” to enter the programming mode, and the keypad lights up.

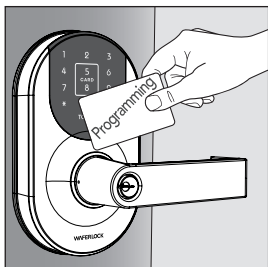
► Step 3



Press *****#**. While a long beep sound and blue light will blink **5** times for successful removed all passcode.

Remove Individual Passcode

► Step 1



Present the programming card to reading area, number **1**, **2**, and **3** on keypad will blink with **2** beep sounds.

► Step 2



Press "**2**" to enter the programming mode, and the keypad lights up.

► Step 3



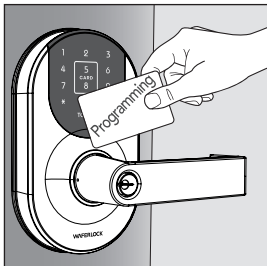
Key in the **6** digits passcode you would like to remove, then follow by **★#**. There will be a long beep sound if successful.

Remark

- When the passcode is incorrect, there will be 4 short beep sounds and blue light will blink twice.
- To continue remove other passcode, press "TOUCH" key and repeat step 3.

Volume Setting

► Step 1



Present the programming card to reading area, number **1**, **2**, and **3** on keypad will blink with **2** beep sounds.

► Step 2



Press "**2**" to enter the programming mode, and the keypad lights up.

► Step 3



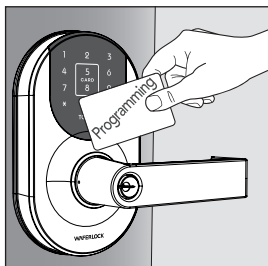
Press ***2#**, there will be 2 short beep sounds.

Key in **001#**, there will be a long beep sound, meaning the lock is in quiet mode.

Key in **002#**, there will be a long beep sound, meaning the lock is in loud mode.

Program Door Opening and Closing Mode

► Step 1



Present the programming card to reading area, number **1**, **2**, and **3** on keypad will blink with **2** beep sounds.

► Step 2



Press "**2**" to enter the programming mode, and the keypad lights up.

► Step 3



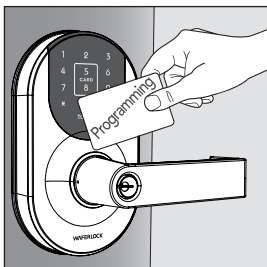
Press ***5#**, there will be 2 short beep sounds.

Key in **001#**, there will be a long beep sound, meaning the door will lock automatically after 5 seconds.

Key in **002#**, there will be a long beep sound, meaning the door is under toggle mode.

Passcode Anti-Peeping Setup

► Step 1



Present the programming card to reading area, number **1**, **2**, and **3** on keypad will blink with **2** beep sounds.

► Step 2



Press "**2**" to enter the programming mode, and the keypad lights up.

► Step 3



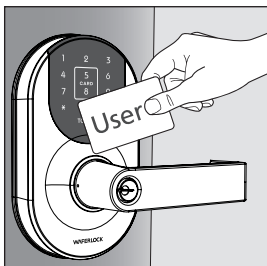
Press ***7#**, there will be 2 short beep sounds.

Key in **001#**, there will be a long beep sound, meaning the passcode anti-peeping mode is OFF.

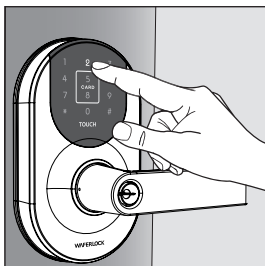
Key in **002#**, there will be a long beep sound, meaning the passcode anti-peeping mode is ON.

Low Battery Warning

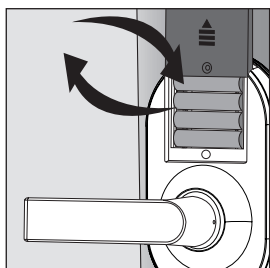
► Step 1



OR



► Step 2



Either when using credentials / passcode / mobile App to unlock or lock the door, or when using the programming card for enrollment, if there is 3 short beep sounds and appear 5 times, and blue light blinks 5 times, meaning the battery is low. Please change new battery immediately.

Reminder

1. When the battery is low, credentials / passcode cannot be added or removed by programming card.
2. The credentials (including passcode) can be set up to maximum 2,000 sets. There will be 10 short beep sounds with blue light blinks 3 times when reaching maximum number. The lock will be able to enroll new credentials or passcode after current credentials and passcode been removed.
3. The spare mechanical key is recommended to be placed outside the room, ex: in the car or office, to prevent the credentials from being lost or out of battery or electronic failure, you can use the spare key to unlock the door.
4. Please removed the battery to avoid leakage damaging the product if you do not use the product for more than 2 months.
5. This is not a waterproof product, do not splash water or get the product wet, which may cause circuit boards damage.
6. When cleaning, do not use water or any cleaning agent to avoid rusting or damaging the finished.
7. Be sure to install the door stop to prevent the handle damaged from door slamming.
8. When the door is open, please be careful of the latch, do not touch it with your hands or body to prevent injury.
9. Please keep children away from this product (including battery and accessory).

Federal Communication Commission Interference Statement

This equipment has been tested and found to comply with the limits for a Class B digital device, pursuant to Part 15 of the FCC Rules. These limits are designed to provide reasonable protection against harmful interference in a residential installation. This equipment generates, uses and can radiate radio frequency energy and, if not installed and used in accordance with the instructions, may cause harmful interference to radio communications. However, there is no guarantee that interference will not occur in a particular installation. If this equipment does cause harmful interference to radio or television reception, which can be determined by turning the equipment off and on, the user is encouraged to try to correct the interference by one of the following measures:

- Reorient or relocate the receiving antenna.
- Increase the separation between the equipment and receiver.
- Connect the equipment into an outlet on a circuit different from that to which the receiver is connected.
- Consult the dealer or an experienced radio/TV technician for help.

FCC Caution: To assure continued compliance, any changes or modifications not expressly approved by the party responsible for compliance could void the user's authority to operate this equipment. (Example - use only shielded interface cables when connecting to computer or peripheral devices).

This device complies with Part 15 of the FCC Rules. Operation is subject to the following two conditions:

(1) This device may not cause harmful interference, and (2) This device must accept any interference received, including interference that may cause undesired operation.

WAFFERLOCK
Security ∞ Simplicity