



簡易手冊

無線

Soundbar

Wireless Soundbar

S40T



MFL72068242
2312_Rev01



www.lg.com
版權所有 © 2024 LG Electronics Inc. 保留一切權利。

中文

規格

- 電源耗用
- 請參閱主標籤。

電源適配器

- 型號：A702-230131W-M21
- 製造商：Dongguan Aohai Technology Co.,Ltd.
- 輸入：100 - 240 V ~ 50 / 60 Hz
- 輸出：23.0 V $\overline{\text{---}}$ 1.31 A

尺寸（闊 x 高 x 深）：大約 720.0 mm x 63.0 mm x 87.0 mm

匯流排電源供應 (USB): 5 V $\overline{\text{---}}$ 500 mA

擴音器（總 RMS 輸出功率）：300 W RMS

注意：開放來源程式碼軟件

欲獲得 GPL、LGPL、MPL 及其他有義務公開包含本產品內容原始程式授權的源代碼，及存取所有提及授權條款、版權聲明及其他相關文件，請瀏覽

<https://opensource.lge.com>。

LG Electronics 也可應您要求，在由您支付相關費用（如媒體成本、運費及處理費）的條件下以 CD-ROM 方式提供開放原始程式碼，如有需要請寄送電子郵件至 opensource@lge.com。

該產品最後一次出貨的三年內，任何收到此資訊的人可享此優惠。

安全注意事項

本機的插頭握柄是專為本產品所設計，且與附贈的電源線結合為一體，若您因為任何理由而需截短此電源線時

請勿再使用該插頭

應使用全新的插頭以確保連續使用之安全性。請依據1994年之插頭及插座規範的規定，將插頭確實地與電源線結合。



符合標準聲明

在此，LG電子聲明 無線 Soundbar 類型的無線電設備符合 2014/53/EU指令。你可以從以下互聯網地址獲得歐盟符合性聲明的全文：

<http://www.lg.com/global/support/cedoc/cedoc#>

為使用者安全着想，安裝或使用裝置時，身體與裝置之間的距離不應少於 20 厘米。

ENGLISH

Specification

Power consumption

- Refer to the main label.

AC adapter

- Model : A702-230131W-M21
- Manufacturer : Dongguan Aohai Technology Co.,Ltd.
- Input : 100 - 240 V ~ 50 / 60 Hz
- Output : 23.0 V $\overline{\text{---}}$ 1.31 A

Dimensions (W x H x D): Approx. 720.0 mm x 63.0 mm x 87.0 mm

Bus Power Supply (USB): 5 V $\overline{\text{---}}$ 500 mA

Amplifier (Total RMS Output power): 300 W RMS

Open Source Software Notice Information

To obtain the source code that is contained in this product, under GPL, LGPL, MPL, and other open source licenses that have the obligation to disclose source code, and to access all referred license terms, copyright notices and other relevant documents, please visit <https://opensource.lge.com>.

LG Electronics will also provide open source code to you on CD-ROM for a charge covering the cost of performing

such distribution (such as the cost of media, shipping, and handling) upon email request to opensource@lge.com.

This offer is valid to anyone in receipt of this information for a period of three years after our last shipment of this product.

IMPORTANT SAFETY NOTICE

The cord grip for the plug fitted to this product is built into the existing power cord as supplied. If, for any reason you need to shorten the cord,

DO NOT RE-USE THE PLUG

A new plug must be used to ensure your continued safety by securing the plug to the power cord in accordance with Plug & Socket Regulations 1994.

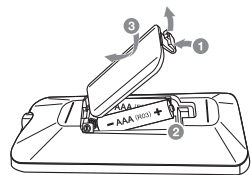
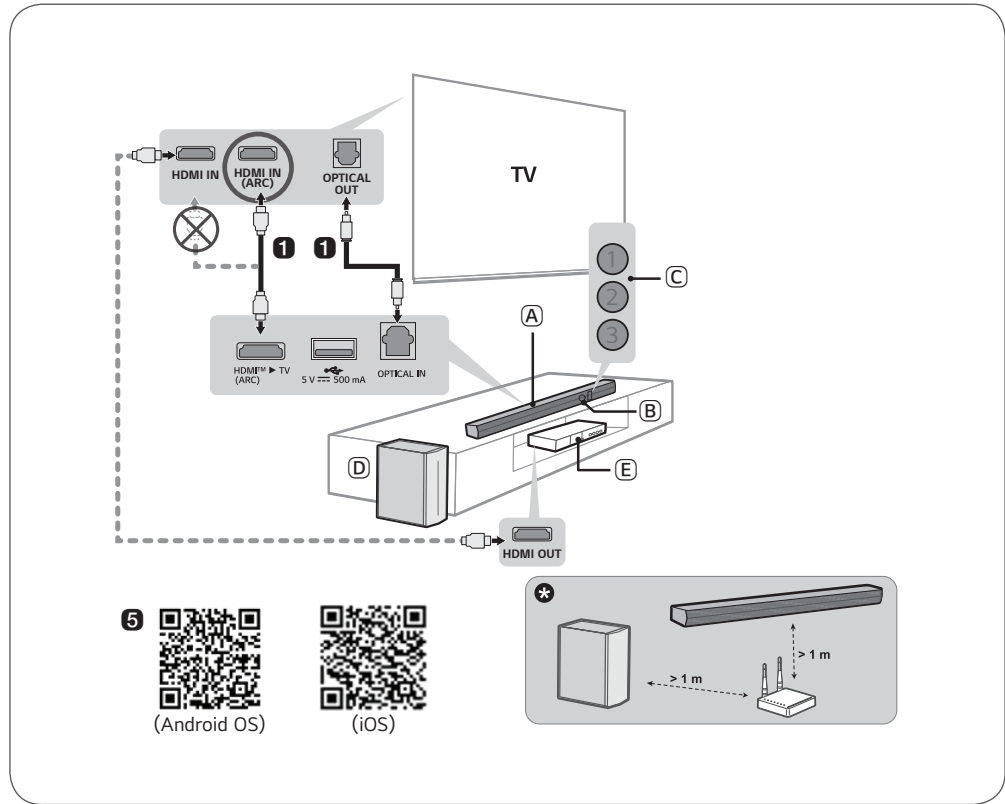
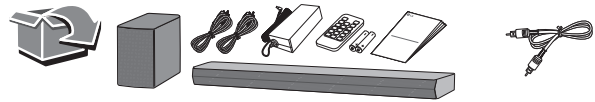


Declaration of Conformity

Hereby, LG Electronics declares that the radio equipment type Wireless Soundbar is in compliance with Directive 2014/53/EU. The full text of the EU declaration of conformity is available at the following internet address:

<http://www.lg.com/global/support/cedoc/cedoc#>

For consideration of the user, this device should be installed and operated with a minimum distance of 20 cm between the device and the body.



更換電池
Replacement of Battery

HDMI™
HIGH-DEFINITION MULTIMEDIA INTERFACE

中文 產品安裝及使用

操作設備前請仔細閱讀本手冊，並保留以備日後參考。
要檢視有關進階功能的指示，請造訪 <http://www.lg.com> 或掃描二維碼下載使用說明書。部份使用說明的內容有可能與你的產品不同。



- A Soundbar
B 遙控接收器
C LED 指示燈狀態 (1 2 3)

- D 無線重低音揚聲器 — 貼近 Soundbar 安裝。
E 外置設備 — (藍光播放機、遊戲機等等)

○ : 亮起 / ● : 熄滅 / ◉ : 閃爍				
紅色閃爍	白色閃爍	白色	白色	紫色
開啟 開機	Bluetooth 就緒	Bluetooth	OPTICAL / HDMI ARC	USB

- 請用光纖線或 HDMI 線將 Soundbar 連接至您的電視機。
- 如果您使用的是外部裝置（如機頂盒、藍光播放器、遊戲機等），透過 HDMI 連接線將其連接到電視。
⚠ 如有必要，請購買 HDMI 線纜、光纖或 USB 延長線來連接 Soundbar。
- 依照以下順序連接電源：無線重低音揚聲器 → Soundbar。然後開啟 Soundbar。與 Soundbar 自動建立連線後，無線重低音揚聲器的 LED 指示燈亮綠色。
- 透過 Bluetooth 將設備連接至您的智能電話
 - 輕觸您的智能電話內的設定 ⚙ 按鈕，選擇 Bluetooth。開啟 Bluetooth 功能。（ 關 > 開）
 - 按下 Bluetooth 配對 ⌘ 按鈕。片刻之後，LED1 和 LED2 指示燈閃爍白色。
 - 於您的智能電話上找到並輕觸產品名稱。產品會顯示為「LG S40T(XX)」。
 - 當產品透過 Bluetooth 連接到智能手機時，LED1 指示燈和 LED2 指示燈亮起白色。
- 連接到 LG Soundbar 應用程式
 - 從您智能電話的 Google Play 或 App Store 應用程式中，找到並安裝 LG Soundbar 應用程式。
 - 您可透過選擇 [設定] 內的 [幫助] 以獲得更多資訊。



如果無線重低音揚聲器上的 LED 指示燈亮紅色，表示 Soundbar 未連接至重低音揚聲器。若出現該情況，請依照以下順序進行連接。

- 按下 Soundbar 的電源 ⏻ 按鈕以關閉它。
 - 按下無線重低音揚聲器背面的 PAIRING 按鈕。確認 LED 指示燈是否閃爍綠色。
 - 如果無線重低音揚聲器上仍出現紅色 LED 指示燈，請再次長按重低音揚聲器背面的按鈕。
 - 按下 Soundbar 的電源 ⏻ 按鈕以開啟它。
 - 建立連線後，無線重低音揚聲器上的 LED 指示燈會亮起綠色。
- ✱ 請將 Soundbar、重低音揚聲器放置在離其他裝置（例如無線路由器、微波爐等等）超過 1 米的位置，以防止無線電干擾。

- 設計和規格若有更改，恕不另行通知。
- Google Play 是 Google LLC 的商標。

ENGLISH Installing and Using the Product

Please read this manual carefully before operating your set and retain it for future reference.
To view the instructions of advanced features, visit <http://www.lg.com> or scan QR code and then download Owner's Manual. Some of the content in this manual may differ from your product.



- A Soundbar
B Remote Control Receiver
C Status LED (1 2 3)

- D Wireless Subwoofer - Install it close to the soundbar.
E External Device - (Blu-ray player, game console, etc.)

○ : On / ● : Off / ◉ : Blink				
Red blinking	White blinking	White	White	Purple
Power on Power off	Bluetooth ready	Bluetooth	OPTICAL / HDMI ARC	USB

- Connect the soundbar to your TV via an optical cable or an HDMI cable.
- If you are using an external device (ex. Set-top box, Blu-ray player, game console, etc.), connect it to the TV via an HDMI cable.
⚠ If necessary, purchase HDMI cables, an optical cable, or a USB extension cable to connect the soundbar.
- Connect to power in the following order: wireless subwoofer → soundbar. Then, turn on the soundbar. When the connection is automatically established with the soundbar, the LED on the wireless subwoofer will light up green.
- Connecting the product to your smartphone via Bluetooth
 - Tap the Settings ⚙ button on your smartphone and select Bluetooth. Turn on the Bluetooth function. (Off > On)
 - Press the Bluetooth pair ⌘ button. After a moment, LED1 and LED2 blink white.
 - Find and tap the product on your smartphone. The product appears as "LG S40T(XX)".
 - When the product is connected to your smartphone via Bluetooth, LED1 and LED2 light up white.
- Connecting to the LG Soundbar app
 - Find and install the LG Soundbar app on Google Play or App Store from your smartphone.
 - You can get more information regarding its use by selecting [Help] in [Setting].



If you see a red LED on the wireless subwoofer, it means that the soundbar is not connected to the subwoofer. If this is the case, connect them in the following order.

- Press the Power ⏻ button on the soundbar to turn it off.
 - Press the PAIRING button on the back of the wireless subwoofer. Check if LED blinks green.
 - If you still see a red LED on the wireless subwoofer, press and hold the button on the back of the subwoofer again.
 - Press the Power ⏻ button on the soundbar to turn it on.
 - When the connection is established, you will see a green LED light on the wireless subwoofer light up.
- ✱ Keep the soundbar, the subwoofer away from the device (ex. wireless router, microwave oven, etc.) over 1 m to prevent wireless interference.

- Design and specifications are subject to change without notice.
- Google Play is a trademark of Google LLC.