

VEVOR[®]

TOUGH TOOLS, HALF PRICE

Technical Support and E-Warranty Certificate www.vevor.com/support

STEEL GARDEN CARTS

USER MANUAL

MODEL:V500/V680

We continue to be committed to provide you tools with competitive price.

"Save Half", "Half Price" or any other similar expressions used by us only represents an estimate of savings you might benefit from buying certain tools with us compared to the major top brands and does not necessarily mean to cover all categories of tools offered by us. You are kindly reminded to verify carefully when you are placing an order with us if you are actually saving half in comparison with the top major brands.

VEVOR[®]

TOUGH TOOLS, HALF PRICE

STEEL GARDEN CARTS

MODEL:V500/V680



NEED HELP? CONTACT US!

Have product questions? Need technical support? Please feel free to contact us:
Technical Support and E-Warranty Certificate www.vevor.com/support

This is the original instruction, please read all manual instructions carefully before operating. VEVOR reserves a clear interpretation of our user manual. The appearance of the product shall be subject to the product you received. Please forgive us that we won't inform you again if there are any technology or software updates on our product.

SAFETY INSTRUCTIONS

WARNING:

Read this material before using this product. Failure to do so can result in serious injury.

Assembly precautions

1. Assemble only according to these instructions. Improper assembly can create hazards.
2. Wear ANSI-approved safety goggles and heavy-duty work gloves during assembly.
3. Keep the assembly area clean and well-lit.
4. Keep bystanders out of the area during assembly.
5. Do not assemble if tired or when under the influence of alcohol, drugs or medication.
6. The product capabilities apply to properly and completely assembled products only.
7. Assemble on a flat, level, hard and smooth surface capable of safely supporting the Wooden Hall Tree.
8. For additional information regarding the parts listed in the following pages, please refer to the Assembly Diagram of this manual. Unwrap and separate all parts in a clean work area.

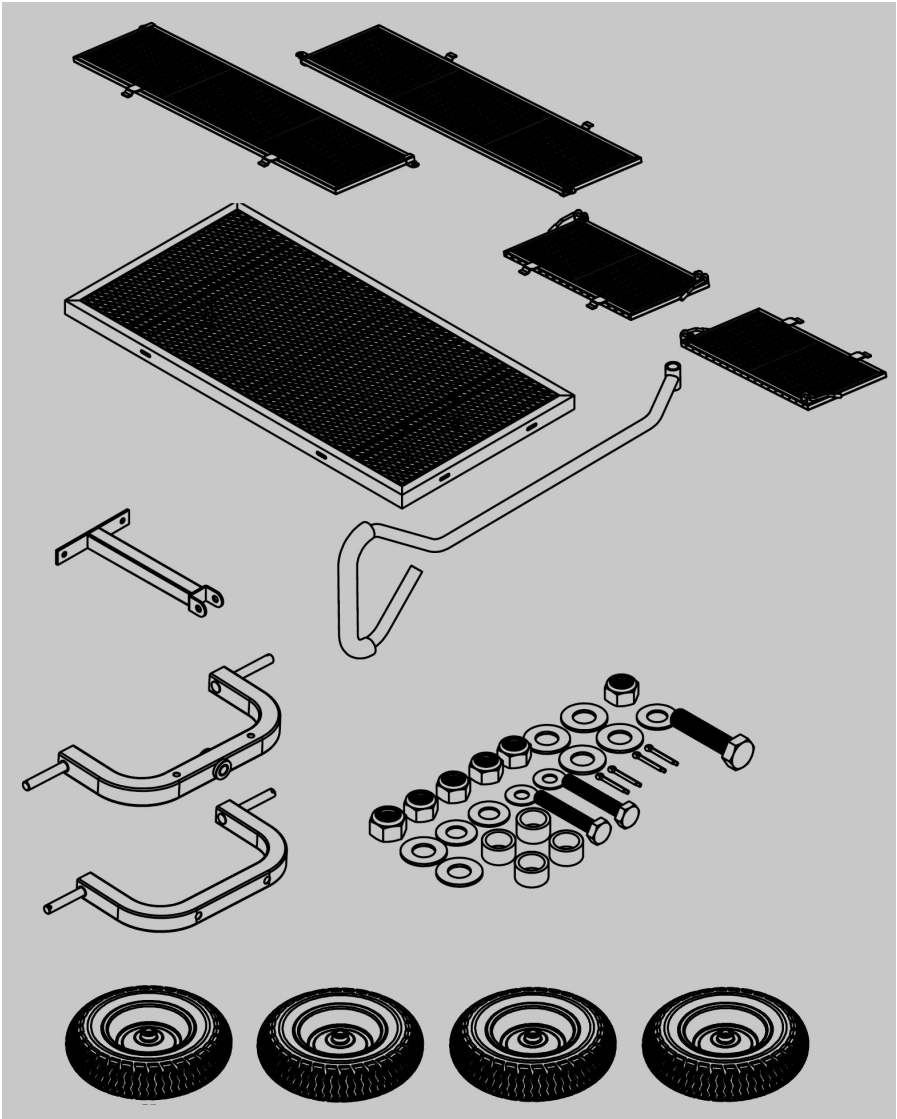
Use precautions

1. Do not exceed the overall maximum load capacity. The weight rating is based on an evenly distributed load.
2. Do not load items on the top edges of the panels. Remove panels before loading oversized items.
3. Distribute the load evenly over the surface of the bed.
4. Do not allow children to use the cart without supervision. This cart is not a
5. Do not use this cart for transporting passengers.
6. This cart is not intended for highway use.
7. Do not exceed 5 mph.
8. If any parts become damaged, broken or misplaced, do not use the cart until replacement parts have been obtained.

9. Do not use the cart on surfaces or for transporting objects that can cause damage to the pneumatic tires or tubes. DO NOT INFLATE TIRES TO MORE THAN 30 PSI (2.07 BAR).

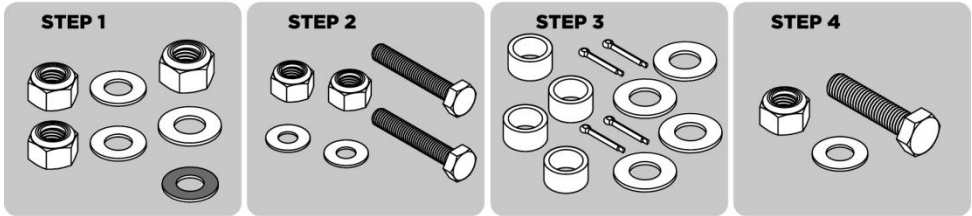
SAVE THIS MANUAL

PARTS LIST



ASSEMBLY STEP

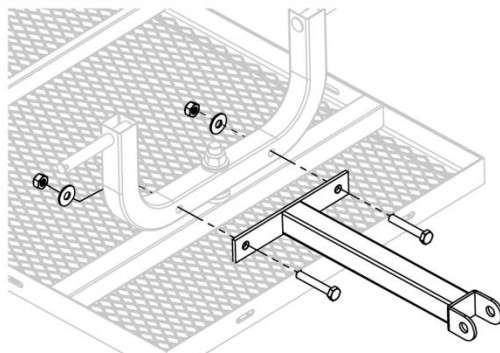
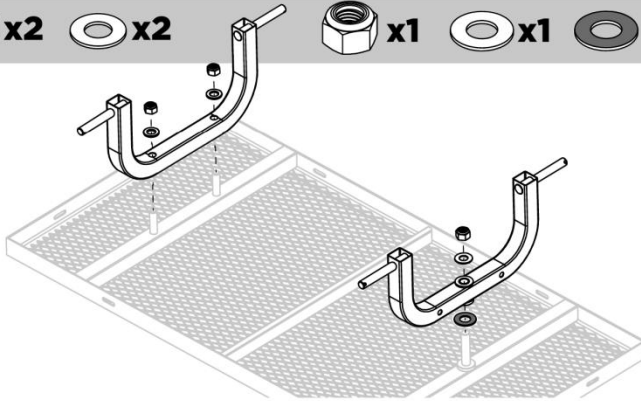
HARDWARE

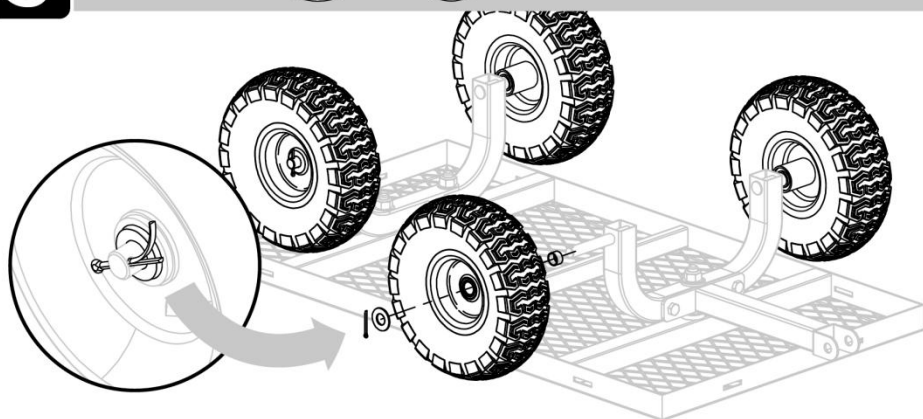
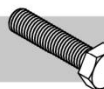
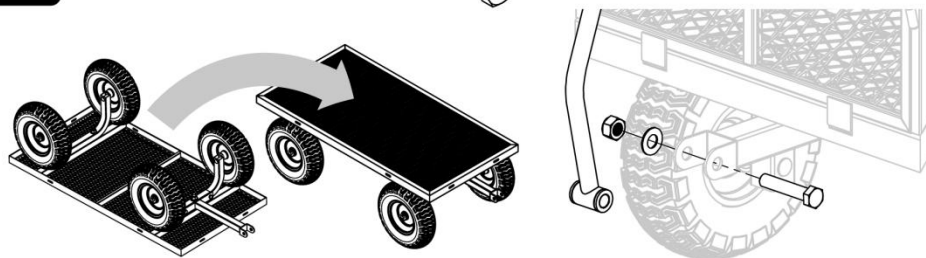
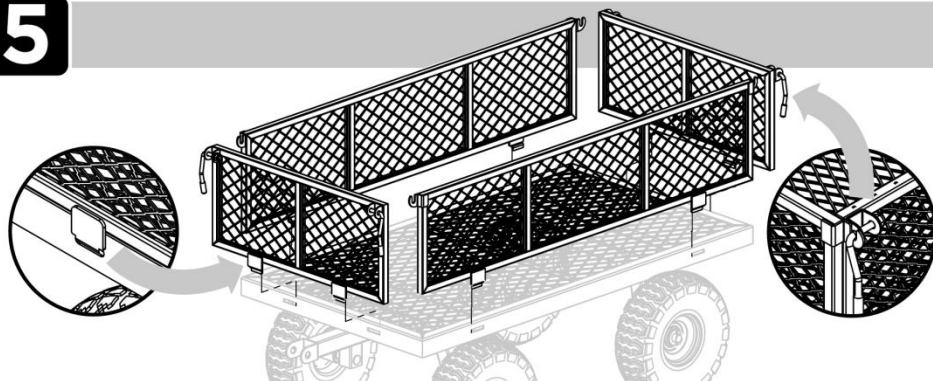


TOOLS REQUIRED



ASSEMBLY INSTRUCTIONS



3**x4****x4****x4****4****x1****x1****x1****5**

PRODUCT PARAMETER

Model	V500	V680
Safe Loading Weight	500 LBS/ 226kg	680 LBS/ 308kg
Colour	Body:Black ; Other: Yellow	Body:Black ; Other: Yellow
Body Size	33.8*18*9.4in 860*457*240mm	33.8*18*9.4in 860*457*240mm

Do not exceed the overall safe loading weight.

Address:Shuangchenglu803nong11hao1602A-1609shi,baoshanqu,
shanghai200000CN.

ECREP:E-CrossStuGmbH.

MainzerLandstr.69,60329FrankfurtamMain.

UKREP:YHCONSULTINGLIMITED.

C/OYHConsultingLimitedOffice147,CenturionHouse,LondonRoad,
Staines-upon-Thames,Surrey,TW184AX

ImportedtoAUS:SIHAOPTYLTD.

1ROKEVASTREETEASTWOODNSW2122Australia

ImportedtoUSA:SanvenTechnologyLtd.

Suite250,9166AnaheimPlace,RanchoCucamonga,CA91730



Technical Support and E-Warranty Certificate
www.vevor.com/support