

TOSHIBA

STAYING CONNECTED MATTERS.

#DetailsMatter



SMART ASSISTANT

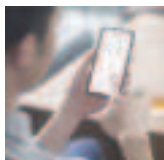


RELIABLE PARTNER



TIMELY SUPPORT

REMOTE CONTROL



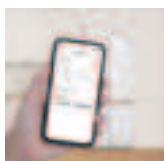
- Adjust Temperature
- Cooling Zone
- Deep Freeze
- Super Cooling
- Super Freezing
- Turbo PureAIR
- Quick Ice

FOOD MANAGEMENT



- You can always monitor the freshness of food to prevent waste.

ENERGY MODE



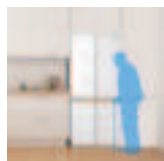
Save electricity and money by setting the refrigerator's temperature and defrosting time to match your off time.

OPEN-DOOR ALARM



Notify when fridge is improperly closed.

FAMILY CARE



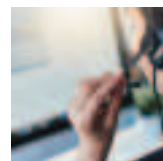
- Check the fridge's opening record by family members.
- Send a reminder if the fridge has not been opened during the setting time.

AI DIAGNOSIS



- The refrigerator actively self-tests and analyzes defects, helping consumers address problems faster and better.

AFTER-SALES



- Click to call after-sales
- FAQ information

* Actual functions are subject to the version after activating the appliances

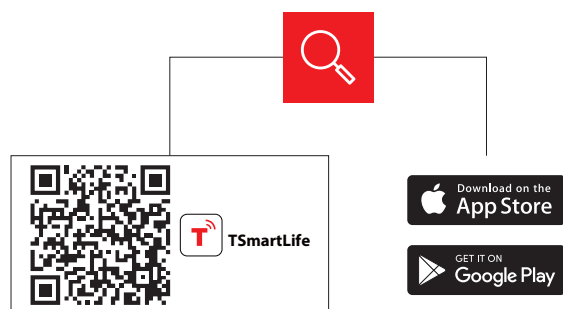


TSmartLife

QUICK START GUIDE

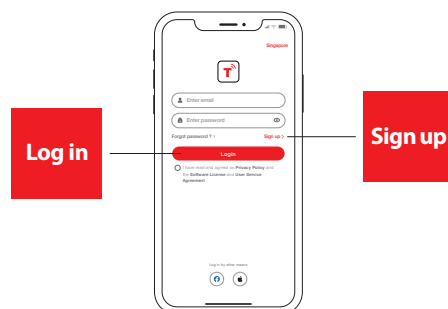
1 DOWNLOAD THE TSmartLife APP

Scan QR code or find us on your app store



2 REGISTER AND LOG IN

Log in for existing users or sign up for new users

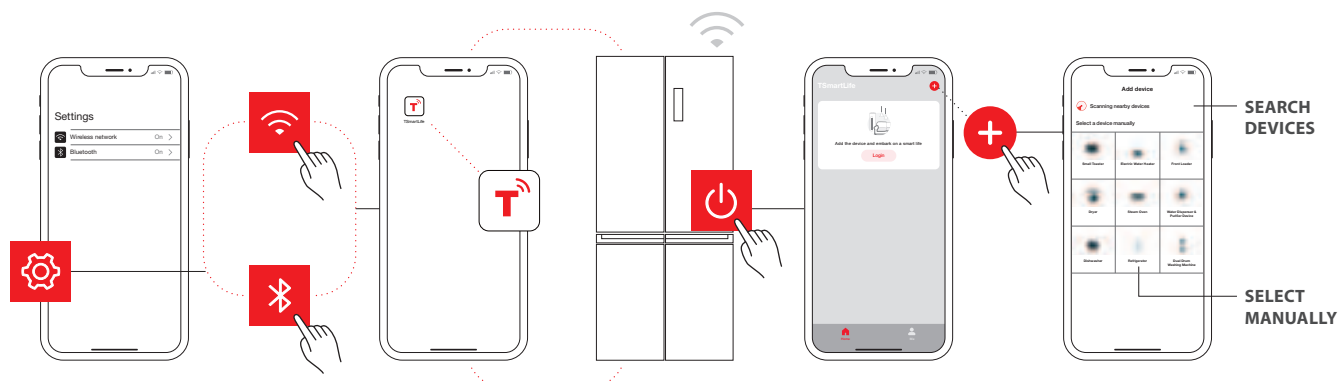


3 CONNECT YOUR DEVICES TO TSmartLife

A. Connect to wireless network and enable Bluetooth

B. Open the TSmartLife app. Power on selected device

C. Add your device using one of the following methods:



QUICK TIPS

- Make sure your devices are powered on.
- Keep your mobile phone close to your device during connection.
- Connect your mobile phone to the wireless network at home.
- Enable the 2.4GHz frequency on your wireless network router. Contact the manufacturer if unsure whether the router supports 2.4GHz.
- The device is unable to connect to wireless network that requires authentication and also appears in public areas such as hotels and restaurants.
- It is recommended to use a wireless network name that only contains letters and numbers. If your wireless network name contains special characters, modify it in the router. Disable WLAN+ (Android) or WLAN Assistant (iOS) when connecting your devices to the network.
- To reconnect a device to the wireless network, click "+" on the app home screen and add the device again by the category and model according to the app prompts.

www.toshiba-lifestyle.com

TOSHIBA