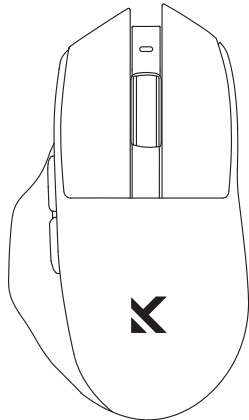


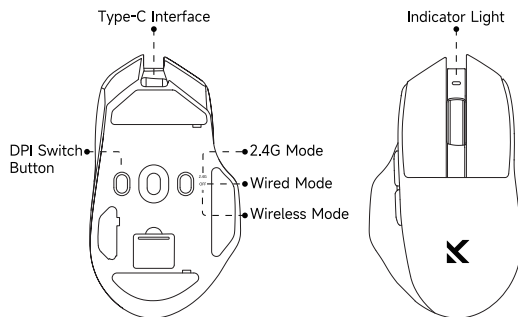
## MCHOSE



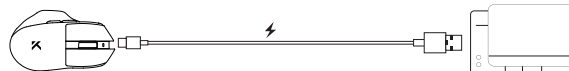
### — G7 USER MANUAL — WIRELESS MOUSE

Warm Reminder: The product images shown are for illustrative purposes only; the actual product shall prevail.

#### · PRODUCT OVERVIEW



#### · CHARGING/WIRED CONNECTION USE



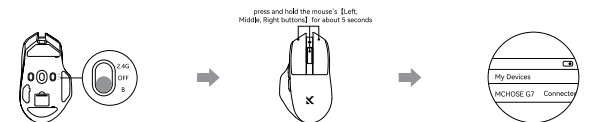
- Plug the provided USB cable's Type-C end into the mouse's corresponding port and the USB end into the corresponding port on your computer to use.
- In 2.4G/Wireless mode, connecting the USB cable will switch to Wired mode while also charging the mouse.

#### · 2.4G CONNECTION USE



- Switch the mode to [2.4G] and plug the mouse's bottom [USB receiver] into the computer's USB port to use.
- Manual pairing (defaulted from factory): Press and hold the mouse's [Left, Middle, Right buttons] simultaneously for about 5s until the indicator light blinks rapidly, entering pairing mode. Insert the receiver into the computer's USB port and bring the mouse near the receiver (within 20cm). Once connected successfully, the indicator light will turn off.

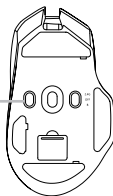
#### · WIRELESS CONNECTION



- Switch the mode to [B], press and hold the mouse's [Left, Middle, Right buttons] simultaneously for about 5s until the indicator light blinks rapidly. Search for the device named [MCHOSE G7] / [MCHOSE G7 Pro] to pair. Once connected, the indicator light will turn off.

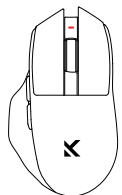
#### · DPI SWITCH

- Indicator Status 1: Red Light 400DPI
- Indicator Status 2: Blue Light 800DPI
- Indicator Status 3: Green Light 1600DPI
- Indicator Status 4: Yellow Light 3200DPI
- Indicator Status 5: Cyan Light 6400DPI
- Indicator Status 6: Purple Light 12000DPI



Press the [DPI Switch Button] to cycle through six DPI levels, adjustable via the driver. G7 Pro with the sixth DPI setting at 26000.

#### · BATTERY STATUS INDICATOR



- The red indicator light is flashing: Please charge immediately.
- The red indicator light is on: Charging in progress.
- The green indicator light is on: Charging completed.
- When the [Indicator Light] flashes red, please charge the mouse promptly.

Note: This device has been tested and complies with the limits for Class B digital devices under Part 15 of the FCC Rules. These limits are designed to provide reasonable protection against harmful interference in residential installations. This device generates, uses, and can radiate radio frequency energy, and if not installed and used in accordance with the instructions, may cause harmful interference to radio communications.

However, there is no guarantee that interference will not occur in a particular installation. If this device does cause harmful interference to radio or television reception (which can be determined by turning the device off and on), we encourage the user to try one or more of the following measures to correct the interference:

- Reorient or relocate the receiving antenna.
  - Increase the separation between the equipment and the receiver.
  - Connect the equipment to an outlet on a circuit different from that to which the receiver is connected.
  - Consult the dealer or an experienced radio/TV technician for help.
- Changes or modifications not expressly approved by the responsible party could void the user's authority to operate the equipment.

This device complies with Part 15 of the FCC Rules. Operation is subject to the following two conditions:

- (1) This device may not cause harmful interference.
- (2) This device must accept any interference received, including interference that may cause undesired operation.

#### ⚠ CHARGING INSTRUCTION ⚡

1. It is recommended to charge the mouse only via a computer USB port.
2. Avoid using substandard or non-compliant power adapters to charge the mouse.
3. Avoid using over-voltage or over-current power adapters for charging.
4. Keep the mouse away from high-temperature devices while charging.
5. Please turn off the power switch if the device will not be used for an extended period.

These charging instructions also apply to other rechargeable devices (keyboard/mouse/headphones/speakers, etc.).

## WARRANTY CARD

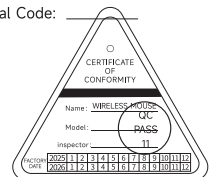
Thank you for purchasing our product. Please contact us if there are any quality issues within the warranty period. Please provide this warranty card so we can provide comprehensive after-sales service.

Product Items: \_\_\_\_\_ Customer Name: \_\_\_\_\_

Serial NO. : \_\_\_\_\_ Address: \_\_\_\_\_

Purchase Date: \_\_\_\_\_ TEL / E-mail: \_\_\_\_\_

Purchase Channel: \_\_\_\_\_ Postal Code: \_\_\_\_\_



Executive standard: GB4943.1-2022