



**Gourmia**

# 3 in 1 Coffee & Tea Maker

Model# GCM-3600

USER  
MANUAL



Read this manual thoroughly  
before using and save it for  
future reference

Model: GCM-3600

© 2016 Gourmia  
[www.gourmia.com](http://www.gourmia.com)  
The Steelstone Group  
Brooklyn, NY

All rights reserved. No portion of this manual may be reproduced by any means whatsoever without written permission from The Steelstone Group, except for the inclusion of quotations in a media review.

Although every precaution has been taken in the preparation of this manual, The Steelstone Group assumes no responsibility for errors or omissions. Nor is any liability assumed for damages resulting from the use of the information contained herein. Although every effort has been made to ensure that the information contained in this manual is complete and accurate, The Steelstone Group is not engaged in rendering professional advice or services to the individual consumer; further, The Steelstone Group shall not be held responsible for any loss or damage allegedly arising from any information or suggestion in this manual.



## **Welcome to the Practical World of** ***Fresh Coffee & Tea in One*** **from Gourmia**

Congratulations on your purchase of the 3 in 1 Coffee & Tea Maker from Gourmia, exclusively designed for the discerning coffee & tea lover!

If you are one of those people who appreciate the convenience of an all in one practical kitchen appliance, then you'll love using our new Coffee and Tea Maker. Switch between making great tasting K-Cup and ground coffee, or fresh loose leaf tea- with just one machine! With its well thought out design and easy operation you'll never again have to think twice about which type of coffee or tea to make.

The pages of this manual offer full and comprehensive instructions to guide you through the functions and features of the Gourmia 3 in 1 Coffee & Tea Maker. Inside this guide, you will also find information on its modes of operation and complete step-by-step instructions for the operation, assembly, cleaning, and maintenance of your appliance.

Please read all safety instructions thoroughly to ensure safe usage at all times.

Thank you for your purchase! We sincerely hope you will enjoy this as well as all the many innovative products brought to you by our family at Gourmia.

## Important Safety Instructions

1. Read all instructions before using.
2. Before connecting the appliance to the power supply, check that the voltage indicated on the appliance corresponds with the voltage in your home.
3. The attached base can only be used for its intended function of beverage frothing /heating.
4. Do not operate appliance empty.
5. Unplug from the outlet when not in use and before cleaning. Allow to cool before the adding or removal of any parts, and before cleaning the appliance.
6. Do not let cord hang over table or counter or touch a hot surface.
7. Do not place on or near a hot gas or electric burner or in a heated oven.
8. Ensure that the appliance is used on a firm and flat surface out of reach of children, this will prevent the appliance from overturning and prevent damage or injury.
9. Keep hands and utensils out of container while in use to reduce the risk of severe injury to persons or damage to the frother.
10. To protect against a fire, electric shock or personal injury, do not immerse cord, electric plugs or heating base in water or other liquids.
11. Close supervision is necessary when any appliance is being used by or near children.
12. Do not touch the hot surface. Use the handle or the button.
13. Extreme caution must be used when moving an appliance containing hot water.
14. Avoid contacting moving parts.
15. The use of attachments not recommended or sold by manufacturer may cause fire, electric shock or injury.
16. Do not operate any appliance with a damaged cord or plug, after the appliance malfunctions, or is dropped or damaged in any manner. Return the appliance to your store of purchase or contact Customer Service.
17. The appliance should only be used for coffee and tea. Do not use the appliance for any other function
18. Use only in a grounded outlet.
19. This appliance is not intended for use by persons (including children) with reduced physical, sensory or mental capabilities, or lack of experience and knowledge, unless under proper supervision by a person responsible for their safety.
20. Always operate the appliance with cover in place.
21. Never place this appliance on or near a hot gas or an electric burner or anywhere it could touch a heated appliance.
22. This appliance is intended for domestic use only.
23. Children should be supervised to ensure that they do not play with the appliance.
24. Do not use outdoors.
25. Save these instructions.

## TABLE OF CONTENTS

**Know Your Coffee & Tea Maker .....6**

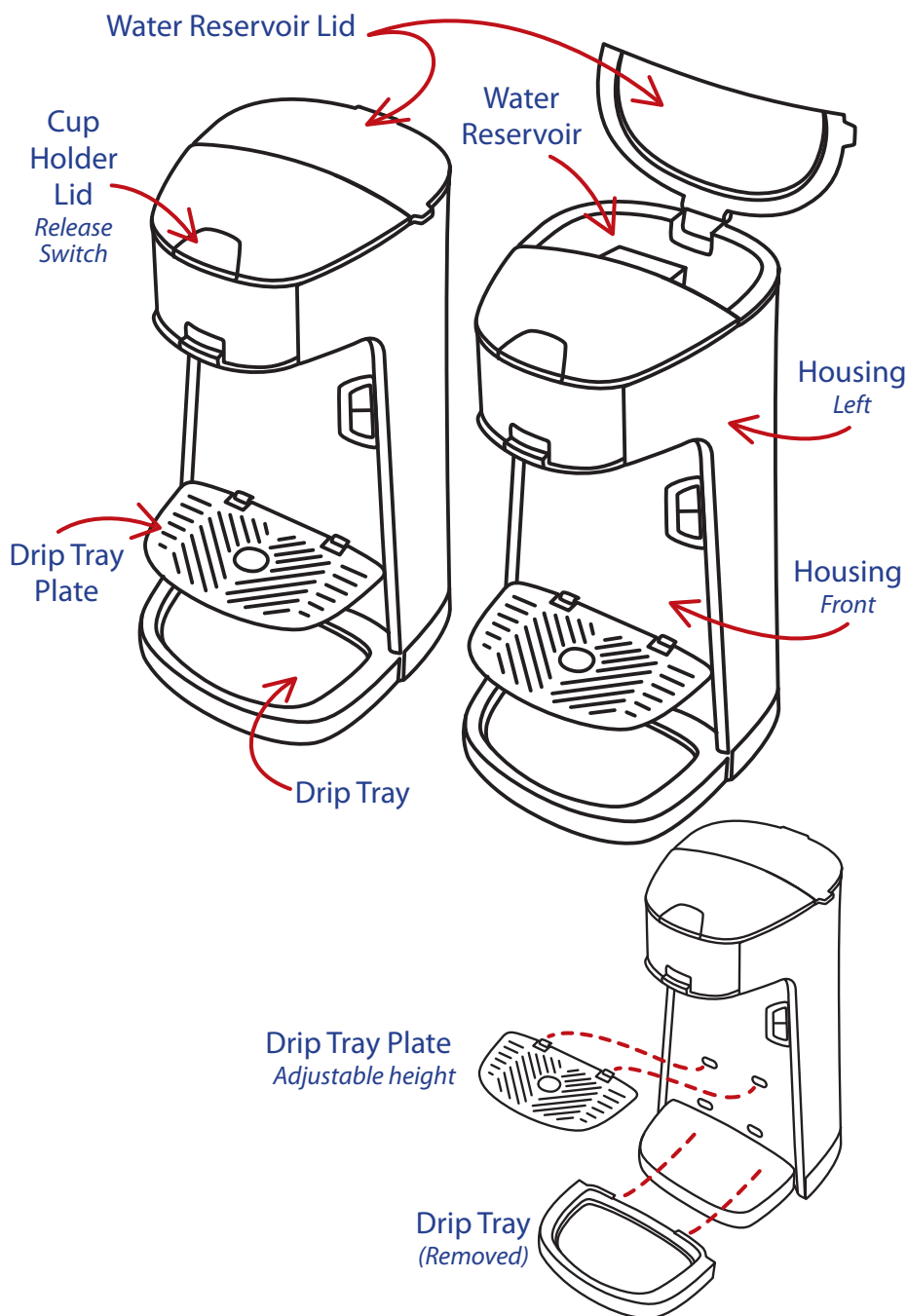
**Using Your Coffee & Tea Maker.....8**

**Cleaning And Maintenance ..... 10**

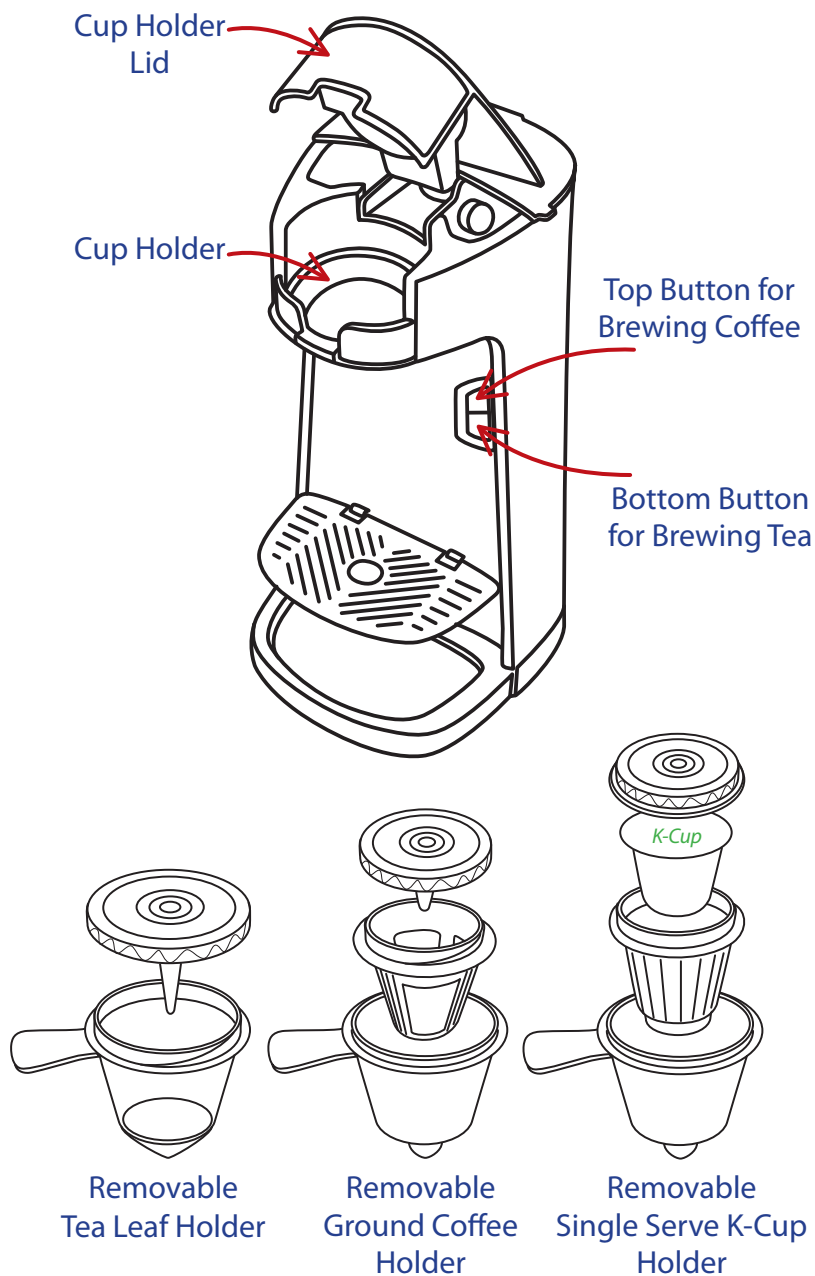
**Warranty & Service..... 11**



## KNOW YOUR THREE in ONE C



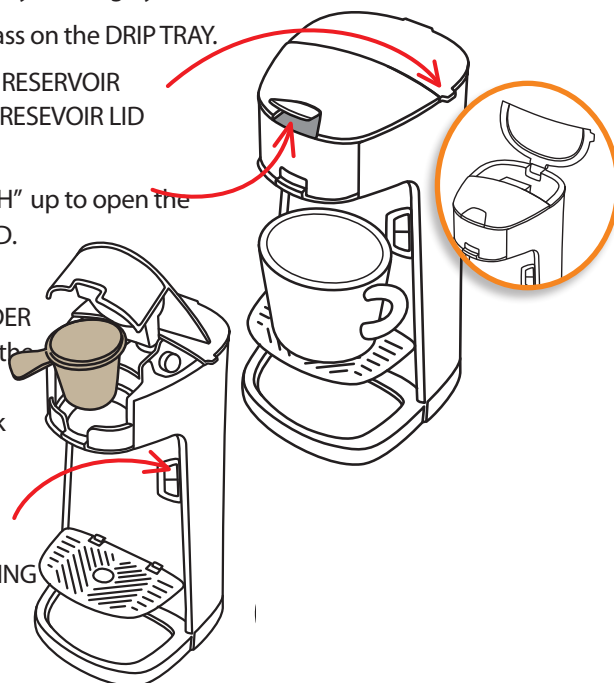
## E COFFEE and TEA MAKER





## Before Using 3 in 1 Coffee & Tea Maker For The First Time

1. Carefully unpack your Coffee / Tea Maker and remove all packing materials.
2. Remove any dust that may have accumulated during packaging.
3. It is advisable to first wash all removable parts with warm, soapy water and soft cloth. Rinse and dry thoroughly.
4. Place a mug or travel glass on the DRIP TRAY.
5. Add water in the WATER RESERVOIR by first lifting the WATER RESEVOIR LID using its handy tab.
6. Pull the RELEASE SWITCH" up to open the brewer's CUP HOLDER LID.
7. Insert the removable SINGLE SERVE CUP HOLDER (without the K-Cup) into the brew support slot. Press the Upper Jaw back down into its original position until you hear a "Click" sound.
8. Press the COFFEE BREWING BUTTON to start the cleaning process.
9. Allow the the cleaning process to continue until no water is left in the reservoir - the appliance will then shut itself down automatically.

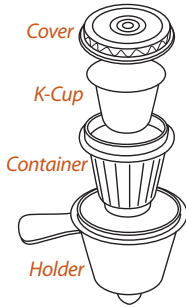


*You are now ready to begin brewing  
your favorite beverage.*



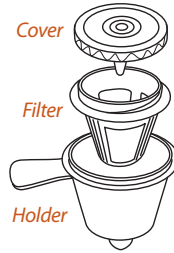
# Using Your 3 in 1 Coffee & Tea Maker

1. Add water to the WATER RESERVOIR by first lifting the WATER RESEVOIR LID using its handy tab.
2. Choose the correct Removable HOLDER parts for your desired beverage.



## For K-Cup Coffee

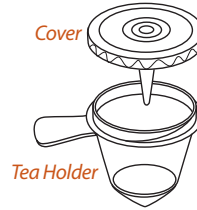
1. Insert K-Cup into Container.
2. Screw on Cover.
3. Place into HOLDER.



## For Ground Coffee

1. Pour Ground Coffee into Filter.
2. Screw on Cover.
3. Place into HOLDER.

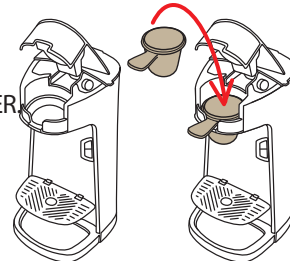
*NOTE: Do not use very fine ground coffee as it could clog the filter.*



## For Ground Tea

1. Pour Ground Tea into TEA HOLDER.
2. Screw on Cover.

3. Pull the RELEASE SWITCH" up to open the brewer's CUP HOLDER LID.
4. Insert fully assembled HOLDER into the CUP HOLDER. Lower the CUP HOLER LID back to its original position - until you hear a "Click" sound.
5. Fill the WATER RESERVOIR with water (do not fill above MAX line). If there is no water in the reservoir, the appliance will automatically shut off.



6. Place a mug or glass on the DRIP TRAY. Adjust tray to fit cup size.
7. Press the Top Button to begin Brewing Coffee, or Press the Bottom Button to begin brewing Tea.

NOTE: You can press either button again if you want to stop brewing. An LED light will illuminate as your beverage is being brewed.

## CLEANING AND MAINTENANCE

**CAUTION:** Make sure to unplug this appliance and let it cool down completely before cleaning. To protect against electrical shock, do not immerse cord, plug or the appliance body in water or liquid. After each use, always make sure to first remove the plug from wall outlet.

1. Unscrew the cover from whichever Removable Holder was used. Discard leftover K-Cup, ground coffee or tea leaves from the Removable Holder. Soak Holder and its attachments in warm soapy water, rinse and dry them thoroughly.
2. Wipe the body with a wet cloth and then dry it completely.
3. When not in use, store appliance in a secure, dry and cool place.

### **CAUTION:**

- Holder may be HOT after brewing, please handle with care .
- The K-cup Holder has sharp needles on its cover and on the inside of the container, which are designed to puncture the capsule, handle with care so as to avoid injury from the needles.
- The water temperature inside the holder is extremely hot, therefore , do not open the UPPER JAW areas while brewing is taking place.

### **IMPORTANT:**

- Avoid fine espresso grind, as this may clog the screen filter.
- Experiment with different grind levels between coarse and fine to suit your taste.
- Don't fill coffee over the filter screen line.

## **WARRANTY & SERVICE**

This Limited Warranty is for one full year from the date of purchase. It is applicable to the original purchaser only and is not transferable to a third party user. Repair or replacement of defective parts is solely at the seller's discretion. In the event that repair isn't possible, the seller will replace the product/part. If product repair/replacement won't suffice, the seller has the option of refunding the cash value of the product or component returned.

Product defects not covered under the Warranty provisions include normal wear and damage incurred from use or accidental negligence, misuse of instruction specifications or repair by unauthorized parties. The manufacturing company is not liable for any incidental or consequential damages incurred by such circumstances.

**FOR CUSTOMER SERVICE  
QUESTIONS OR COMMENTS  
VISIT US @ [GOURMIA.COM](http://GOURMIA.COM)  
OR CALL 888.552.0033**

