

# User Manual of Porch Lights

**WARNING:** TO AVOID RISK OF ELECTRICAL SHOCK, BE SURE TO SHUT OFF POWER WHILE INSTALLING OR SERVICING THIS FIXTURE.

**With Dusk to Dawn Mode:** Auto turn on at night time when ambient brightness less than 20 LUX, auto turn off at daytime when brightness over 100 LUX. You don't need to turn it on/off manually, free your hands, and save your bills on electricity.

## HIHUOS Porch Light Generic Installation Video

QR Code:



Link: <https://youtu.be/ToKnlsQFzvg>

## Install Steps

1. Attach the mounting plate to the outlet box by using two mounting screws.
2. Pull out the wires and grounding wire from the outlet box. Make wire connections using the wire nuts, as follow:
  - Connect the hot wire (usually black insulation) from the fixture to the black wire from the power source.
  - Connect the neutral wire (usually white insulation) from the fixture to the white wire from the power source.
  - Attach the fixture grounding wire (usually green insulation or bare wire) to the mounting strap with the

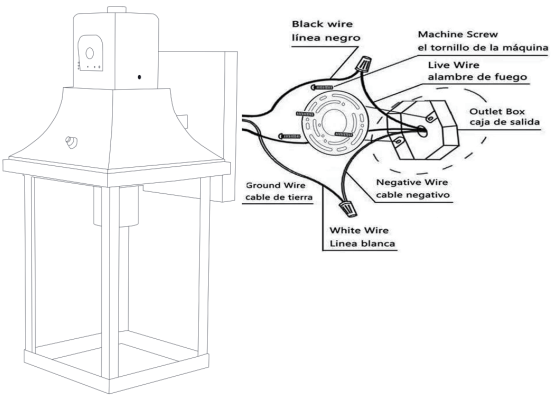
green grounding screw. Then connect it to the house grounding wire with the wire nut.

Carefully put the wires back into the outlet box.

3. Attach the back plate to the mounting plate by inserting the screws, then secure it with two nuts.

**CAUTION:** With silicone caulking compound, caulk completely around where the back plate meets with the wall surface to prevent water from seeping into the outlet box.

Turn on the power at fuse or circuit box.



## Troubleshooting

SYMPTOM	DAY/NIGHT	POSSIBLE CAUSE	SOLUTION
If the light isn't on	Day	Light only work on night	Keep of all sensor for testing
	Night	Wall switch or circuit breaker is off	Turn on wall switch or circuit breaker
		Light bulb may be burned out	Test the light bulb on normal working light fixture
		Light bulb is loose	Tighten the light bulb
		Incorrect or loose wire connections	Check wire connections
		Too much sunlight is shining onto sensor in the early evening	Relocate fixture away from western facing wall
		Too much another light is shining onto motion sensor, such as a street lamp or other light fixture	Eliminate or turn off other lights, block other light shining onto motion sensor, or relocate fixture

# Battery Smart Camera

## User Manual

Thank you for purchasing the smart camera. The device adopts a unique ultra portable design, so that it can be applied in various fields and bring you convenient, safe and colorful daily life. Please set up your camera correctly according to the steps in the instructions.

## DIRECTORY

- I. App Download
- II. Registered User
- III. AP Mode Connection Settings
- IV. WiFi Remote Monitoring Settings
- V. AP Mode And P2P Mode Device List Distinction
- VI. FQA

### I. App Download

Scanning the QR Code to download“Botslab”APP;



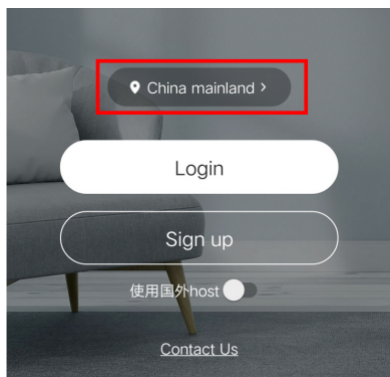
Android phone can search“Botslab”on Google Play or other application markets to download APP;

iPhone/iPad can downloaded“Botslab”on App Store.

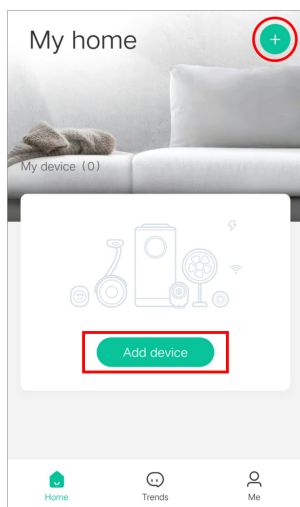
## II. Registered User

Open the APP and click "Sign up", enter your phone number or email to register, receive the verification code, and set the password to complete the registration.

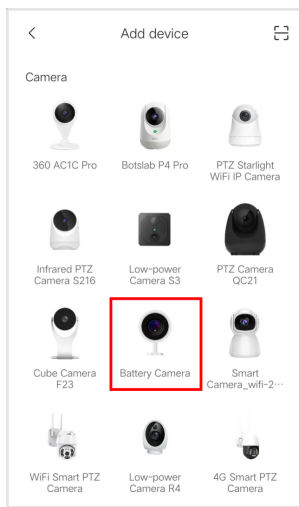
**Note: When logging in to your account, the location should be selected your current area. E.G:**



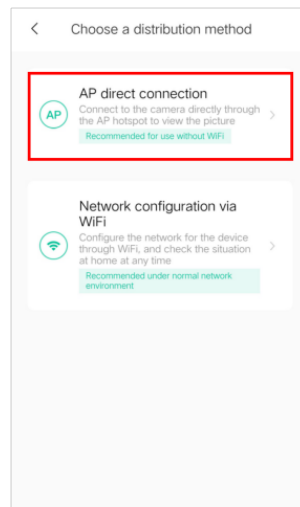
## III. AP Mode Connection Settings



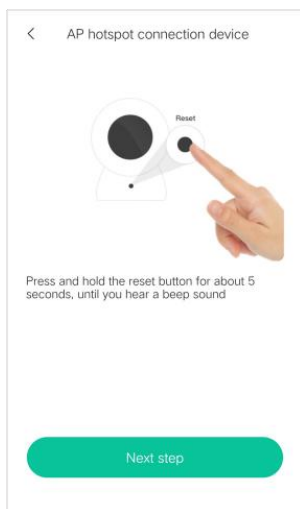
(1) Add device



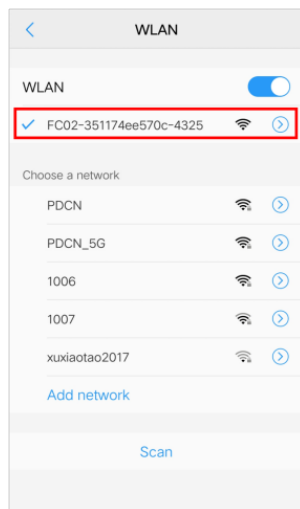
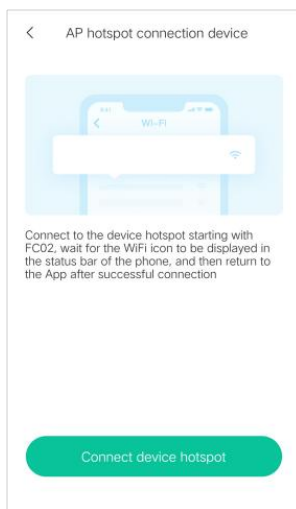
(2) Choose Battery Camera



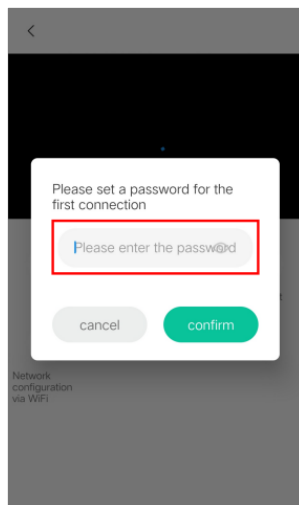
(3) Click AP direct connection



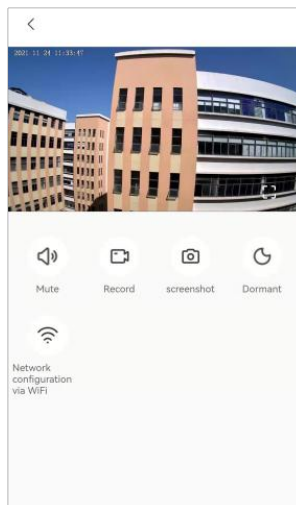
(5) Connect device hotspot



(6) After connecting to the hotspot "fc02 - \*\*\*\*\*", return to app



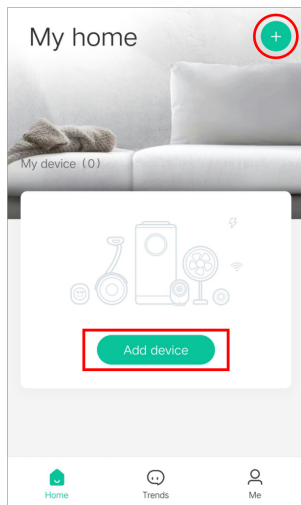
(7) Set password



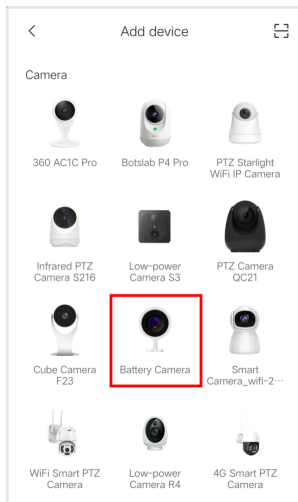
(8) AP mode device is added successfully

## IV. WiFi Remote Monitoring Settings

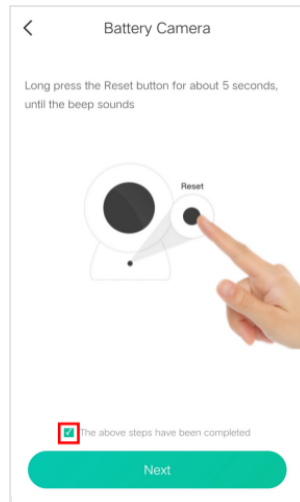
**Note: The phone needs to connect a 2.4G WiFi.**



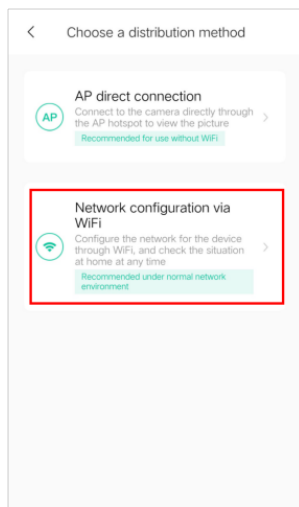
(1) Add device



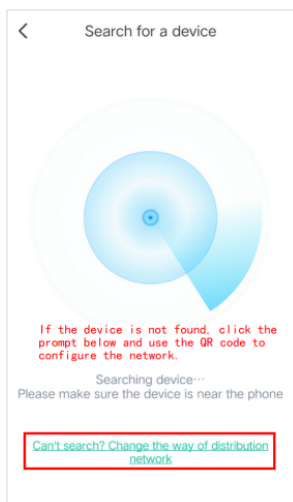
(2) Choose Battery Camera



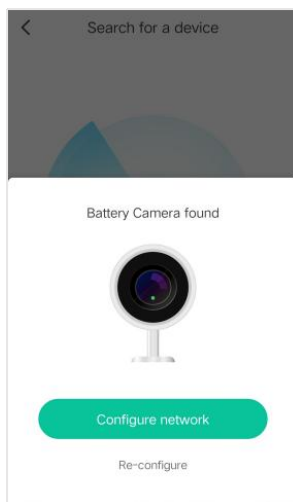
(3) Check and click Next step after camera is reset (red light is on)



(4) Choose Network configuration via WiFi



(5) Searching device Method 2: QR Code Configure Network



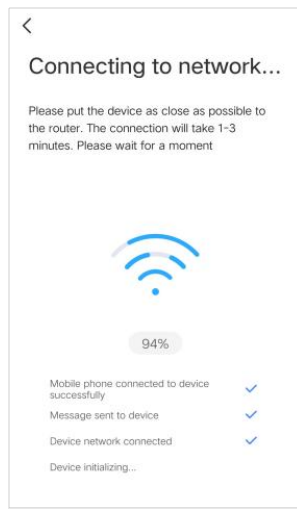
(6-1) When the device is found, click Configure network to connect



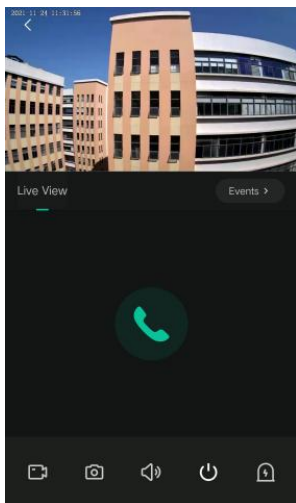
(6.2) Method 2: Aim the QR code at the camera, 10-15cm is better distance



(7) Enter WiFi password  
The device only supports 2.4G network

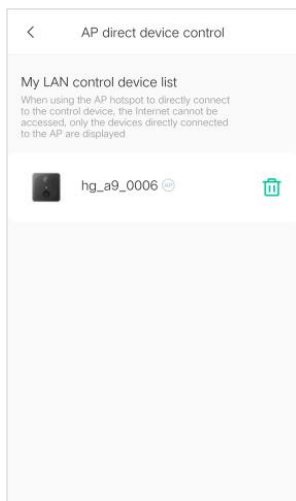


(8) Connecting to network  
—Successfully added

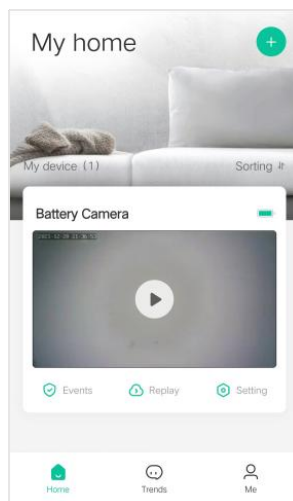


(9) Remote real-time monitoring

## V. AP Mode And P2P Mode Device List Distinction



AP mode device list:  
Me--AP direct device control



P2P mode device list:  
Home--My device

## VI. FQA

1. When logged in, select the correct area where the device is currently located, otherwise the device cannot be added or the device is offline.
2. The device only supports 2.4G network (please don't select 5G network when configuring the network).
3. If the device AP hotspot can be searched, but cannot be connected during network configuration, please delete or forget the hotspot in the WLAN settings, then reconfigure the network again. E.G:

