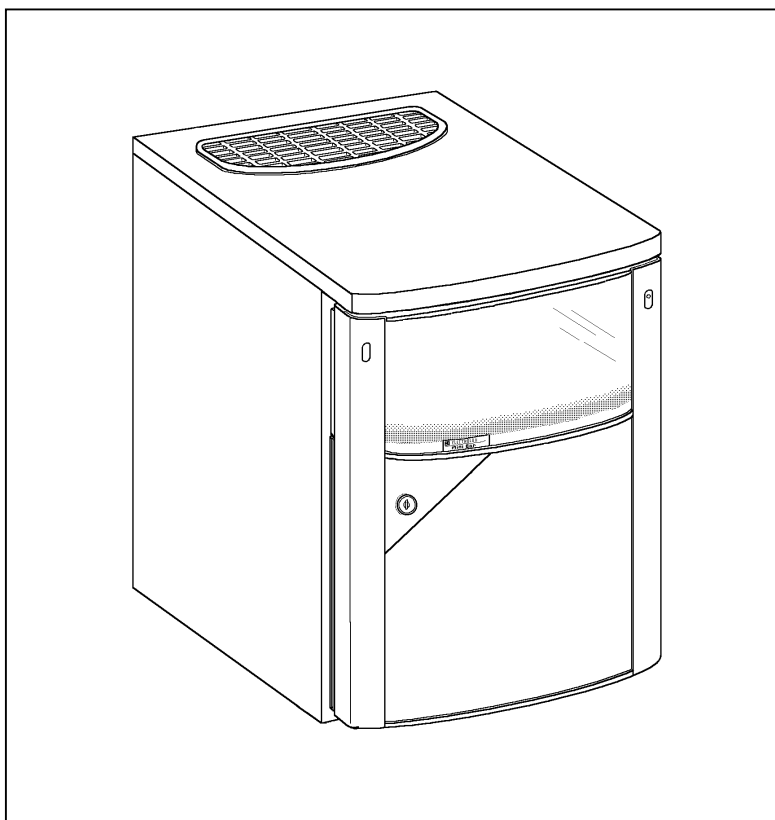


MANUAL

miniBar

**RH 436D
RH 447D
RH 430LD
RH 440LD
RH 441LD
RH 455LD
RH 456LD
RH 460LD
RH 461LD
RH 456LDE**



English

Type H20 / 60
821 2693 -61



T.D. 04/02

TABLE OF CONTENTS

1.0	INTRODUCTION	3
2.0	FOR YOUR SAFETY	3
2.1	Warnings and Safety Advice	3
2.2	Coolants	3
3.0	WARRANTY AND CUSTOMER SERVICE	3
4.0	INSTALLATION	4
4.1	The Purpose of this Manual	4
4.2	Tools/Materials Required	4
4.3	Unpacking	4
4.4	Cleaning	4
4.5	Installation	5
4.6	Securing	6
4.7	Connecting the Device to the Electricity Supply	7
4.8	Changing the Sliding Hinge	8
4.9	Changing the Doorhang	9
5.0	INSTRUCTION FOR USE	10
5.1	Initial Operation	10
5.2	Temperature Control	10
5.3	Automatic Defrost Function	10
5.4	Leakage Detection	10
5.5	Automatic Door Control (ADC)	11
5.6	Interior Light	12
5.7	Environmental Advice	13
5.8	Disposal	13
5.9	Energy Saving Tips	13
5.10	Declaration	13
5.11	Check List	14
5.12	Technical Data	15

1.0

INTRODUCTION

You have made an excellent choice by choosing the **Dometic miniBar**. We are convinced that you will be satisfied with your new appliance in every way. Silent in operation, the miniBar fulfils high quality standards and guarantees an efficient use of resources and energy during its entire working life, i.e. during manufacturing, use and disposal. Please study the installation and operating instructions carefully before attempting to operate the miniBar.

2.0

FOR YOUR SAFETY

2.1

Warnings and Safety Advice

- **In the interests of children's safety:**
When disposing of the refrigerator, remove all doors and leave the shelves inside. This prevents children from being accidentally trapped or suffocated in the refrigerator.
- Never open the cooling unit - it is under high pressure.
- Never store explosive substances, such as lighter fuel, petrol, ether or similar products in the miniBar.
- The minibar is not suitable for the proper storage of medications.
- The miniBar must be installed in such a way that accidental contact with the cooling unit (which heats up when in use) is impossible.
- The appliance has to be connected to a properly earthed socket in line with the relevant valid country regulations.
- Servicing must only be carried out by authorised service personnel.

2.2

Coolants

Ammonia is used as a coolant.

This is a natural compound also used in household cleaning agents (1 litre of Salmiak cleaner contains up to 200g of ammonia - about twice as much as is used in the refrigerator). Sodium chromate is used for corrosion protection (less than 2% of the coolant).

If a leak occurs (which can be easily detected due to the unpleasant smell):

- Switch the device off (pull mains plug, if applicable);
- Ventilate room thoroughly.
- Inform hotel personnel.

For the safety of hotel guests and personnel, it has been established by inspectors that the coolant poses no threat to health.

3.0

WARRANTY AND CUSTOMER SERVICE

Warranty arrangements are in accordance with EC Directive 44/1999/CE and the normal conditions applicable for the country concerned.

For warranty or other servicing, please contact our Dometic Service department. Any damage due to improper use is not covered by the warranty. The warranty does not cover any modifications to the appliance or the use of non-original Dometic parts; the warranty does not apply if the installation and operating instructions are not adhered to and no liability shall be entertained. Parts can be ordered throughout Europe from our Dometic Service department.

When contacting customer service, please always state model, product, MLC-Code and serial number! You can find this information on the model label inside the device. e.g. MOD. No. RH 440LD PROD. No. 0921.0617.10 MLC 01 SER. No. 99410001

4.0

INSTALLATION

4.1

The Purpose of this Manual

The manual shows you how to:

- install the miniBar correctly.
- operate the miniBar correctly.
- guarantee the miniBar's correct maintenance and functioning.
- deal with faults by yourself.

4.2

Tools / Materials Required

You will need the following tools for initial operation:



4.3

Unpacking

Check during unpacking that the device is defect-free.

- Report transport damage to the transport company within 48 hours.
- Check that the voltage noted on the model label corresponds to the mains voltage.

Depending on the model, the following parts can be found in the miniBar :



4.4

Cleaning

Before operating the miniBar, we recommend you clean it both inside and outside.

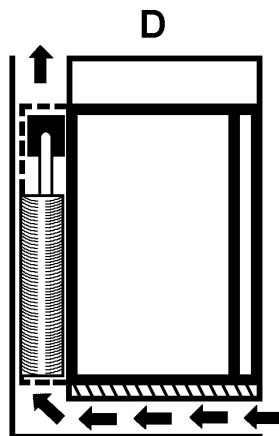
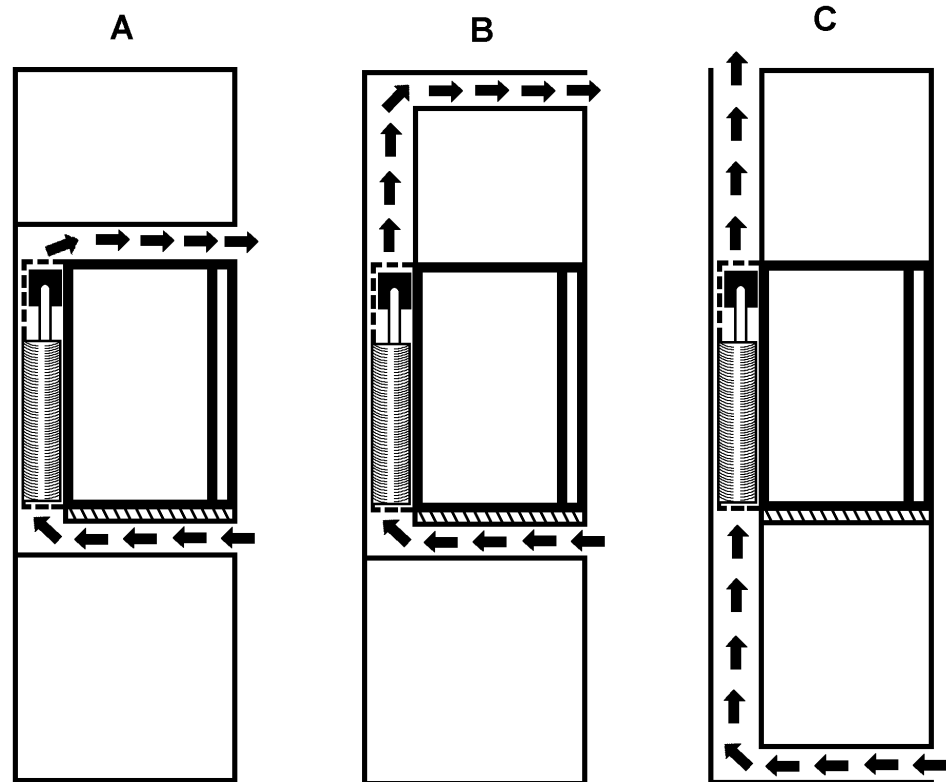
- Use a soft cloth, lukewarm water and a mild detergent.
- Following this, wash out the miniBar using clean water and dry thoroughly.
- At annual intervals, remove dust from fridge aggregate using a brush or soft cloth.



WARNING:

To prevent material damage:

- Do not use soap or detergents which are harsh, coarse or which contain soda.
- Keep the door seal free from oil and grease.
- The cylinder locks have been lubricated in the factory to be long-lasting.

**IMPORTANT:**

Please follow the installation details below carefully. Guarantee is valid for products installed as described only.

1. The refrigerator must be level both directions
2. There should be 20mm clearance to the wall
3. Ventilation must be provided as shown in alternatives A,B,C or D
4. The ventilation duct must at least measure 105mm x the width of the refrigerator
5. Only the entire cooling unit must project into the duct as shown
6. Air passing through the duct must not be preheated by any source of heat
7. Ventilation grills, if used, must have openings of at least 200cm² each

4.6

4.6.1

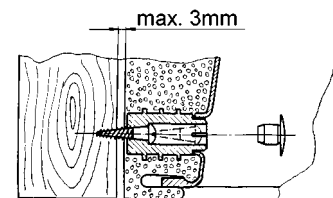
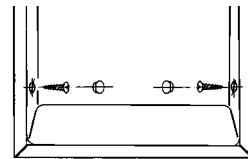
Securing RH456LD/E



1. Tighten screw.



2. Put on cap.



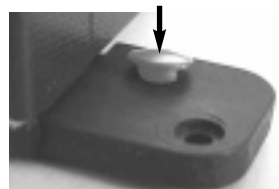
4.6.2

RH436D, RH447D, RH430LD, RH440LD, RH441LD, RH460LD, RH461LD

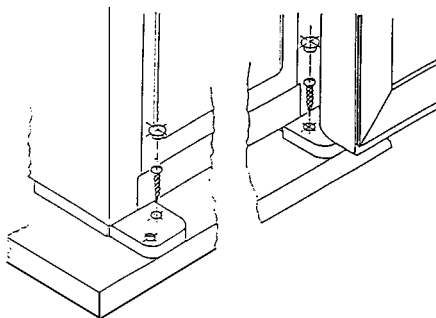
The miniBar must be screwed onto the cupboard using the lower hinges.



1. Tighten screw.



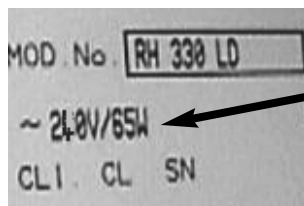
2. Put on cap.



4.7

Connecting the Device to the Electricity Supply

- The device must be connected to a properly earthed socket in line with the relevant valid country regulations.



- Check prior to initial operation that the voltage noted on the model label corresponds to the mains voltage. If this is not the case, do not connect the device and contact your dealer!



If the connection cable is damaged it must be replaced by the Customer Service at Dometic, or by respectively qualified personnel, in order to prevent any hazards.

4.7.1



Attention: For GB Only !

Plug connection (for United Kingdom only)

If a 3-pin plug is used, it should be fitted with a 3 amp fuse, with other plug types, the circuit should contain a 5 amp fuse.

Warning - This appliance must be earthed.

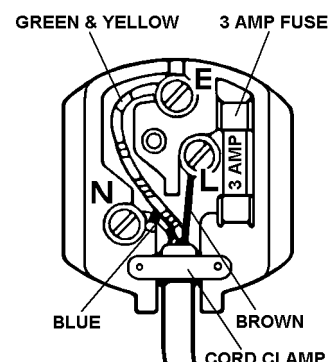
IMPORTANT

The wires in the mains lead of this appliance are coloured in accordance with the following code:

GREEN and YELLOW	: EARTH
BLUE	: NEUTRAL
BROWN	: LIVE

As the colours of the wires in the mains lead may not correspond with the coloured markings identifying the terminals in your plug, proceed as follows.

1. Connect the GREEN and YELLOW coloured wire to the plug terminal marked letter **E** or earth symbol or coloured green or green and yellow.
2. Connect the BROWN coloured wire to the plug terminal marked letter **L** or coloured red.
3. Connect the BLUE coloured wire to the plug terminal marked letter **N** or coloured black.



Moulded-On Plug Version

The mains lead is fitted with a non-rewirable moulded-on plug containing a 3 amp fuse. If the fuse requires replacing at any time, the fuse cover/carrier should be removed using a small screwdriver to level out. The old fuse should be replaced by a 3 amp ASTA approved BS1362 fuse and the fuse cover/carrier must be refitted before the plug is used again.

If the fuse cover-carrier is lost, a replacement can be obtained from the Dometic service Shops.

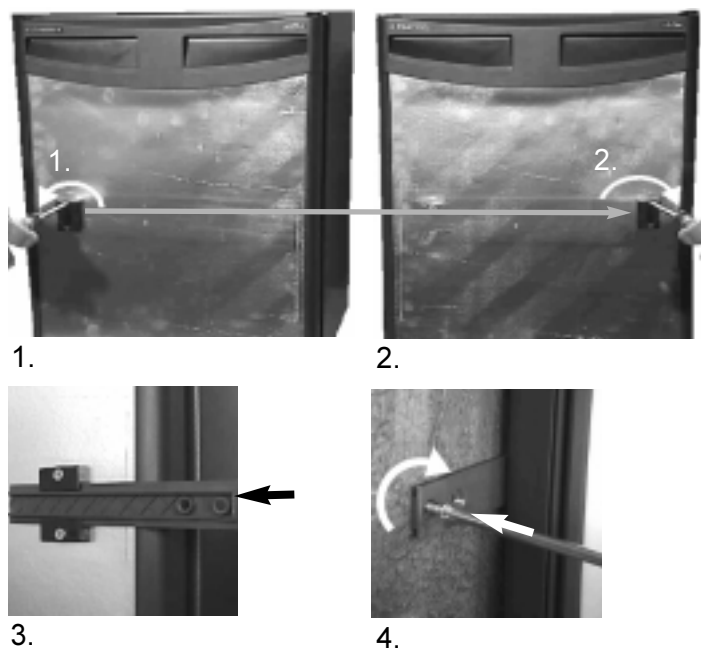
The fuse cover/carrier must be of the same colour as that of the coloured insert in the base of the plug. In no circumstances must the plug be used without a correct fuse cover/carrier fitted.

4.8

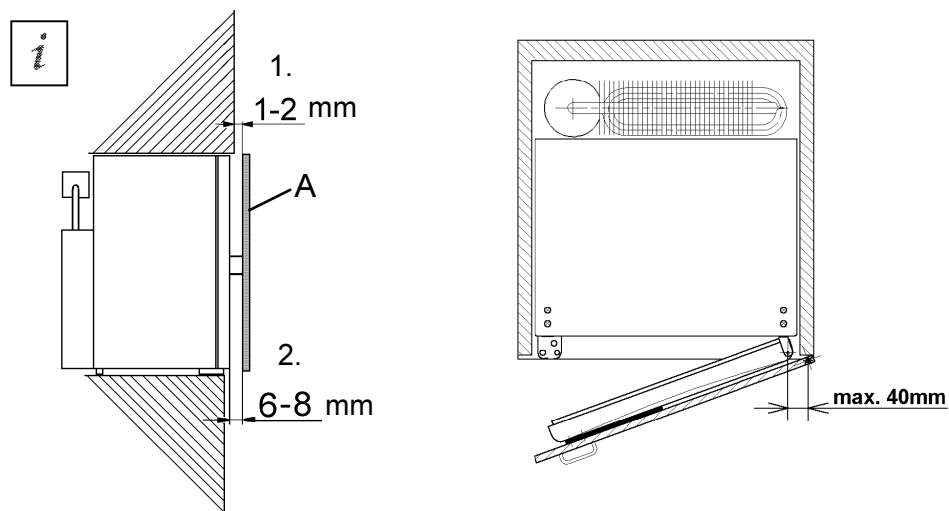
If the plug supplied on the mains lead is not suitable for the socket in your home, it should be cut off and disposed of safely, or destroyed, to avoid any possible shock hazard resulting from the plug being inserted into a 13 amp socket elsewhere in the use. A suitable replacement plug should then be fitted as given above.

Changing the Sliding Hinge

(possible with RH430LD, RH440LD, RH441LD, RH460LD, RH436D, RH447D)



Distance to cupboard door (A)

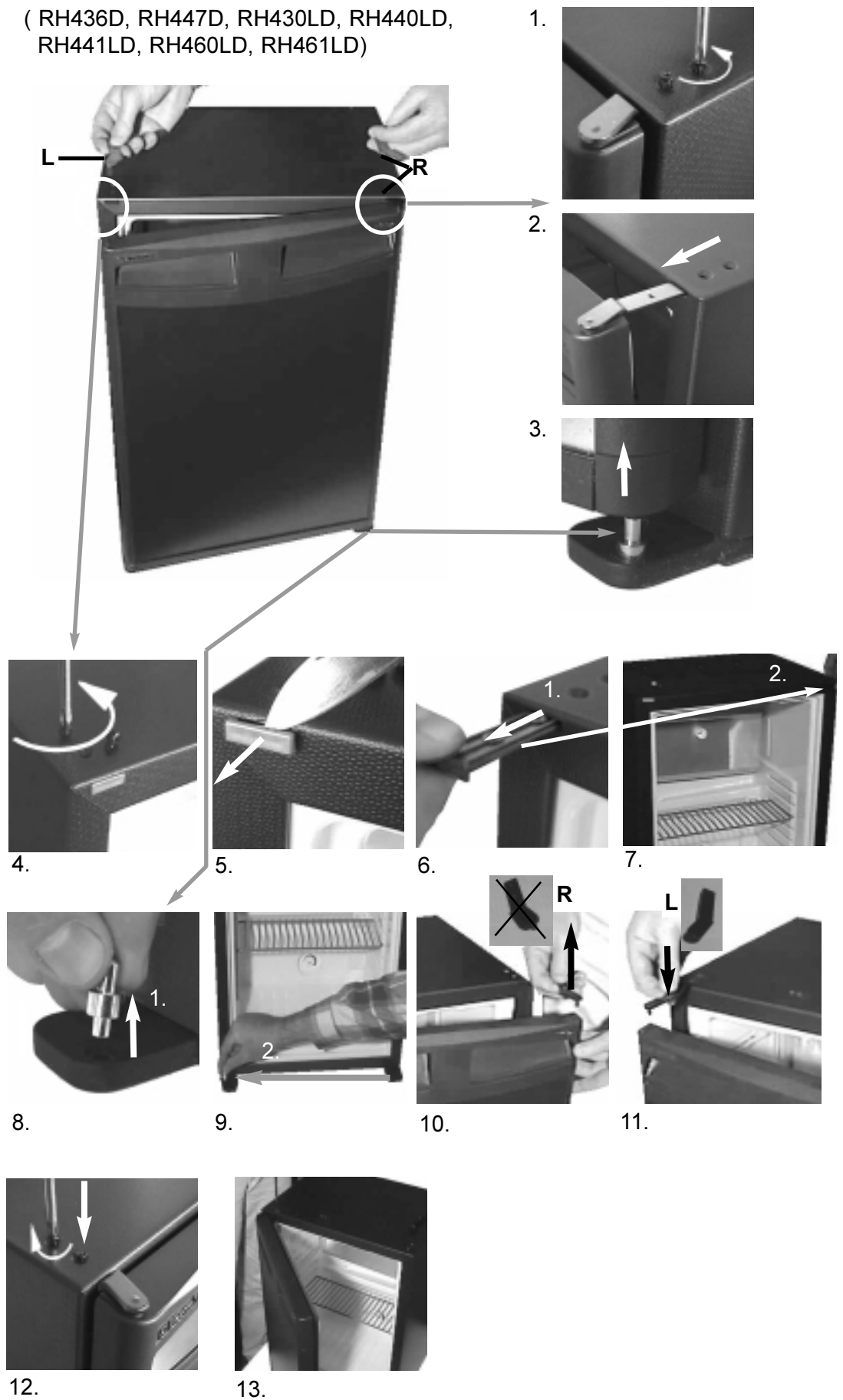


1. When closed, the cupboard door (A) must not lie against the rest of the surrounding cupboard area (distance 1-2mm).
2. There must be a distance of 6-8mm between the cupboard door and the miniBar.

4.9

Changing the Doorhang

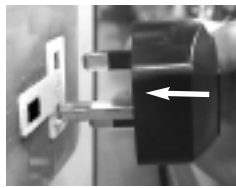
(RH436D, RH447D, RH430LD, RH440LD, RH441LD, RH460LD, RH461LD)



5.0

INSTRUCTION FOR USE

5.1



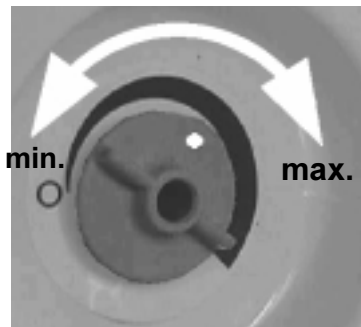
Initial Operation

- The device must be plugged into a properly earthed socket.
- The miniBar achieves its operating temperature after several hours.



The miniBar operates silently !

5.2



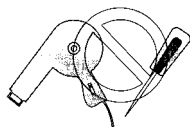
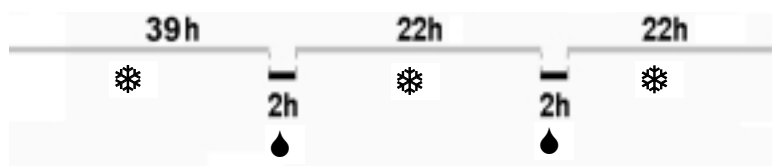
Temperature Control

The miniBar is fitted with an electronic temperature control. The thermostat control button is situated in the internal container's rear area. (RH455LD, RH456LD/E: the thermostat button is situated in the unrefrigerated compartment).

5.3

Automatic Defrost Function

- The first defrosting phase commences 39 hours after the initial operation (5.1) and lasts for two hours.
- After this, the device operates for 22 hours at a time, followed by a defrosting period of 2 hours .



The ice layer must never be removed using force, nor must the defrosting process ever be accelerated using a heater.

5.4

Leakage Detection

The electronics carries out a leakage test after every defrosting period (every 24 hrs) by measuring the temperature at the evaporator by means of a second sensor. If a leakage is detected, the miniBar is shut off by the electronics.



Evaporator sensor

Air sensor

5.5

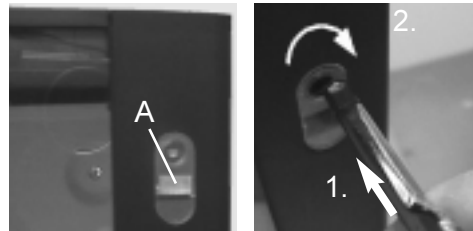
Automatic Door Control (ADC)

The following descriptions only apply to devices with ADC.

Using a red dot in the display window (A, point 3), the ADC shows that the miniBar's door has been opened.

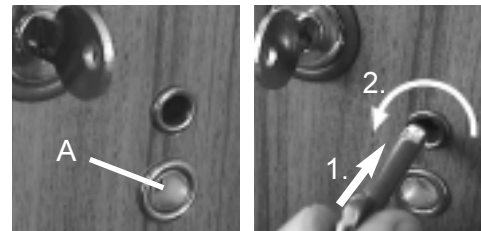
1. Open the miniBar, check its contents and - if applicable- stock it up again.
2. Close the miniBar.

RH456LD/E



3. Insert ADC key and turn to the right.

All other models



3. Insert ADC key and turn to the left.

The red dot has disappeared now.

4. Remove ADC key.

5.5.1

Automatic Door Control (electrical)

When the miniBar is opened, a magnetically operated approximation switch located underneath on the fridge is activated (FIG 1.)

Depending on the connection (opening/closing mechanism), an electric circuit is closed or opened. Accordingly, this is registered and processed at the hotel reception. **Note:** Electrical rating!

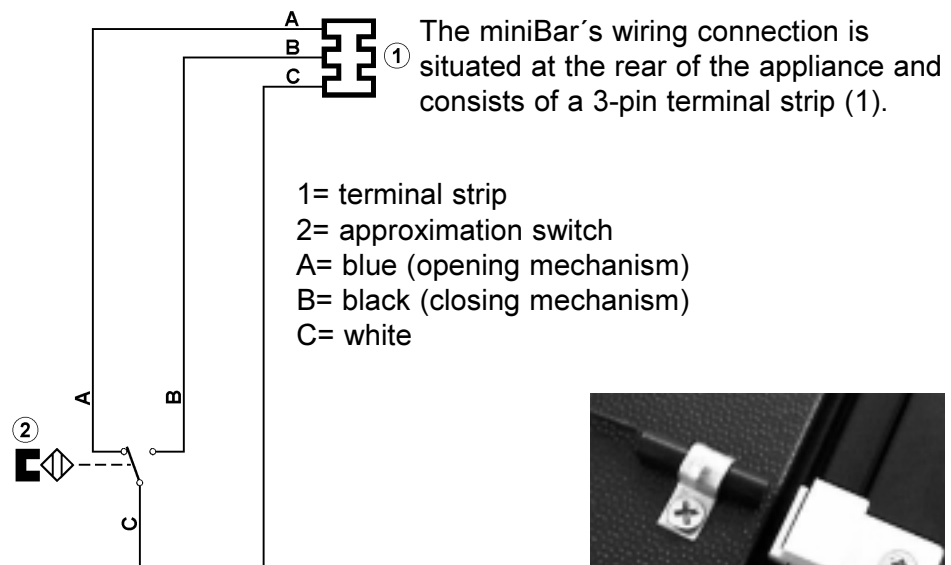


FIG.1

5.6

5.6.1

Interior Light

RH456LD /E

Model RH456LD/E is fitted with low voltage lighting.

- When the door is opened, the light in the cooling shelf is switched on via a sensor.
- The light in the uncooled storage shelf is switched on manually by means of a switch integrated into the lamp.

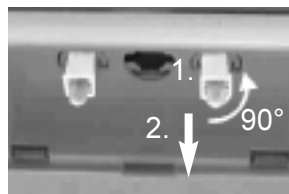
Changing bulbs:



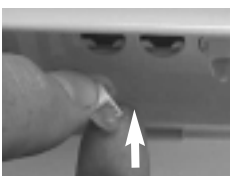
1. Pull out the mains plug.



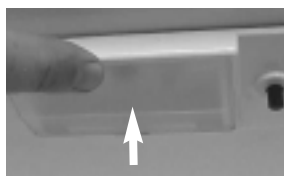
2. Remove the reflector disk.



3. Remove the defective bulb.



4. Insert new bulb.



5. Clip reflector disk back in.

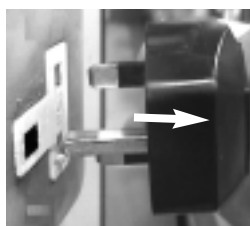
5.6.2

Interior Light

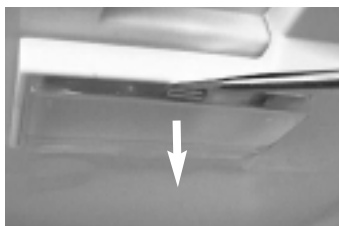
(All other models)

- When the door is opened, the light in the cooling shelf is switched on via a sensor.

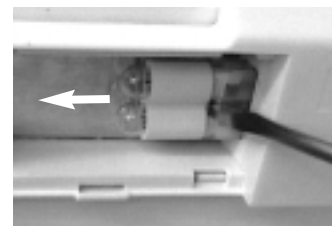
Changing bulbs:



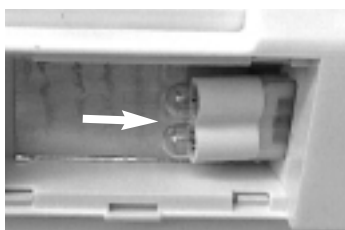
1. Pull out the mains plug.



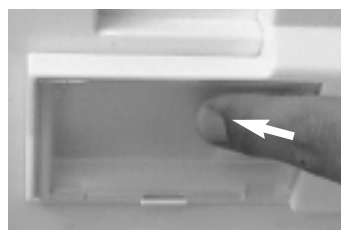
2. Remove the reflector disk.



3. Remove defective bulb.



4. Insert new bulb.



5. Clip reflector disk back in.

To obtain spare bulbs, please contact your Dometic Service Centre.

5.7



Environmental Advice

miniBars manufactured by Dometic GmbH are free from CFCs and fluorinated hydrocarbons.

The cooling unit uses ammonia as the coolant (a natural compound of hydrogen and nitrogen). Cyclopentane, which does not damage the ozone layer, is used as propellant for the insulation made from PU-foam.

5.8



Disposal

In order to ensure the re-use of recyclable packaging materials, these must be disposed of using local collection systems. The device itself must be handed over to a disposal company or local council which will guarantee the correct use of recyclable materials and the proper disposal of the rest.

5.9





Energy Saving Tips

- At an average room temperature of approx. 22°C, it is sufficient to operate the miniBar with an average thermostat setting.
- If possible, always store pre-cooled goods.
- Do not expose the miniBar to direct sunlight and do not place it close to a source of heat.
- An unobstructed air circulation in the fridge aggregate must be ensured.
- When removing goods, only open the miniBar briefly.
- Switch on the miniBar approx. 12 hours prior to stocking.

5.10

Declaration of conformity

 Dometic <small>Created by Electrolux</small>	
DECLARATION OF CONFORMITY	
according to	
Low Voltage Directive 73/23/EEC and the Amendment to LVD 90/683/EEC EMC Directive 89/336/EEC CE Marking Directive 93/68/EEC	
Type of equipment Brand Name Type family Manufacturer's (Factory) name address telephone no telefax no	Absorption Refrigerator DOMETIC H 20/60 DOMETIC GmbH In der Steinwiese 16, D-57074 Siegen INT+49 - 271 692 0 INT+49 - 271 692 304
The following harmonized standards or technical specifications (designations) which comply with good engineering practice in safety matters in force within the EEA have been practiced:	
EN 60335-1 (IEC 335-1), EN 60335-2-24 (IEC 335-2-24) Low Voltage Directive EN 61000-3-2, EN 61000-3-3, EN 55014-1, EN 55014-2 EMC Directive	
The equipment conforms completely with the above stated harmonized standards or technical specifications.	
By signing this document, the undersigned declares as manufacturer, or the manufacturer's authorized representative established within the EEA, that the equipment in question complies with the requirements stated above.	
Manufacturer	
Date 2002.07.01	Signature  Gunther Bittner
	Position General Manager

Check List

1. Failure : No cooling (the aggregate at the back of the device is cold).

Possible Cause	Self Help	Authorised Service
a.) The thermostat is set to "0".	a.) Set temperature control to middle position.	
b.) The device plug is not plugged in.	b.) Plug in device plug.	
c.) No voltage in socket.	c.) Check building fuse.	
d.) Defective electronics or sensor feelers.		d.) Install new electronics or sensor.
e.) Defective heating cartridge.		e.) Install new heating cartridge.
f.) The device is in its defrosting phase.	f.) See operating instruction 5.3	

2. Failure : No cooling (the aggregate is warm).

Possible Cause	Self Help	Authorised Service
a.) The device is not level.	a.) Level the device using a spirit level.	
b.) The device was only switched on a short while ago.	b.) Switch on the device and let it run for 5-6 hours.	
c.) Defective cooling aggregate.		c.) Check whether repair is feasible. If not, exchange device.

3. Failure : Poor Cooling Performance.

Possible Cause	Self Help	Authorised Service
a.) The cooling aggregate is not sufficiently ventilated.	a.) Check that the ventilation grids are not covered. Check that device has been installed properly (installation instruction 4.5).	
b.) The device is exposed to direct sunlight.	b.) Follow installation instruction 4.5.	
c.) The fridge door does not close tightly.	c.) Check installation in line 4.5.	c.) Is door magnet there? Install new door, if required.
d.) Light permanently on when door closed.		d.) Replace lighting sensor. Install new door, if required.
e.) The fridge was stocked a short while ago.	e.) Check fridge after 5-6 hours for proper cooling function.	

4. Failure : Frost formation in fridge.

Possible Cause	Self Help	Authorised Service
a.) The fridge door does not close tightly.	a.) Check installation is in line with 4.5.	a.) Is door magnet there? Install new door.

Model	RH430LD	RH440LD	RH441LD	RH455LD
	Built-in	Built-in	Freestanding / Built-in	Freestanding
Casing	Metal	Metal	Metal	Wood
Gross Contentss (litres)	30	40	40	55
cooled / uncooled	30 / -	40 / -	40 / -	35 / 20
Dimensions (mm)				
(H x W xD)	522x384x412	554x401x446	554x401x449	780x420x445
Electrical Rating (W)	65	65	65	65
Power Consumption				
kWh / 24h*	0,7	0,8	0,8	0,8
Net Weight (kg)	11	14	15	26

Model	RH456LDE	RH456LD	RH460LD	RH461LD
	Built-in	Freestanding	Freestanding / Built-in	Freestanding / Built-in
Casing	Metal	Metal	Metal	Metal
Gross Contents (litres)	56	56	60	60
cooled / uncooled	40 / 16	40 / 16	60 / -	60 / -
Dimensions (mm)				
(H x W x D)	658x450x503	721x450x505	563x486x474	563x486x474
Electrical Rating (W)	65	65	80	80
Power Consumption				
kWh / 24h*	0,9	0,9	1,0	1,45
Net Weight (kg)	21	24,5	20	23

Model	RH436D	RH447D
	Freestanding / Built-in	Freestanding / Built-in
Casing	Metal	Metal
Gross Contents (litres)	30	40
cooled / uncooled	30 / -	40 / -
Dimensions (mm)		
(H x W x D)	522x384x411	554x401x446
Electrical Rating (W)	65	65
Power Consumption		
kWh/ 24h*	0,7	0,8
Net Weight (kg)	11	14

* Power consumption measured at an average ambient temperature of 25°C as an average annual value and at a cooling compartment temperature of 7°C in line with DIN/EN153.
We reserve the right to make technical modifications to our products without notice!



Created by Electrolux

Dometic GmbH
In der Steinwiese 16
D-57074 Siegen

Phone: +49-(0) 271 / 692 0
Fax: +49-(0) 271 / 692 300
www.dometic.de/minibar
www.dometic.com