



PACKTALK BLACK

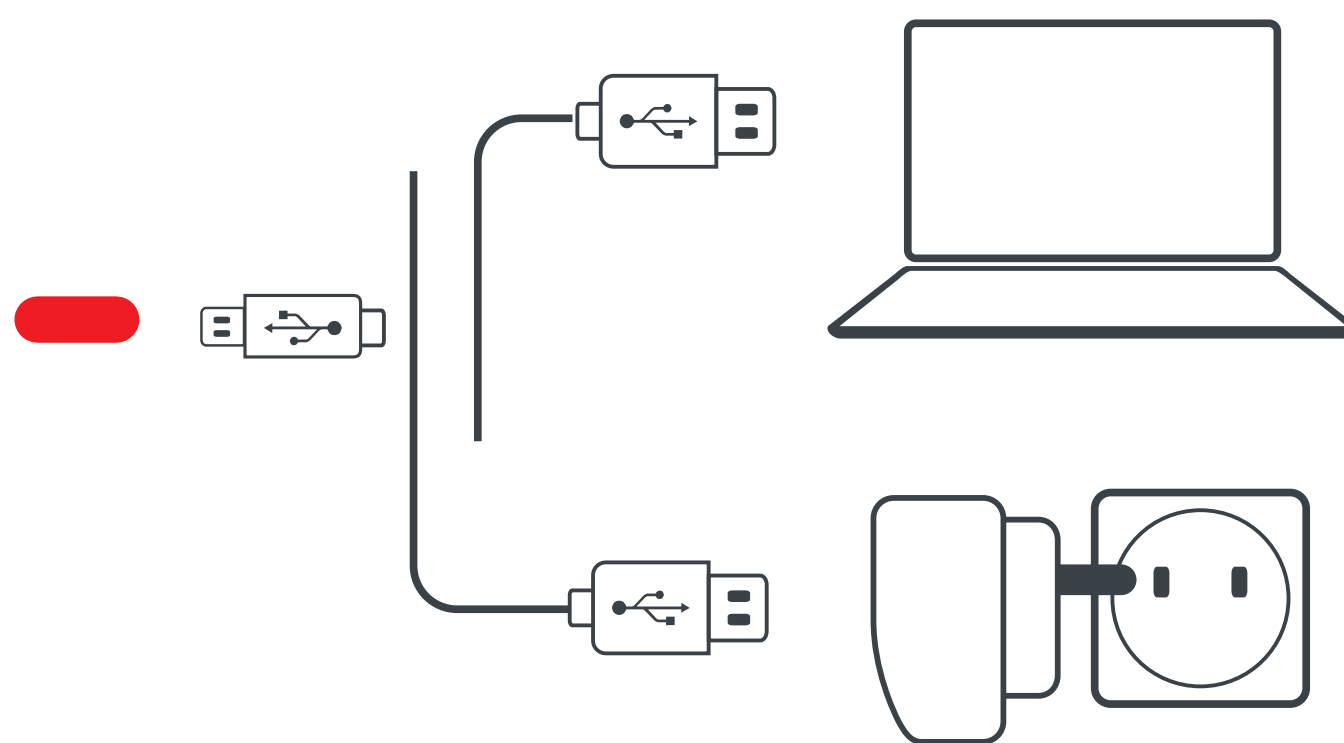
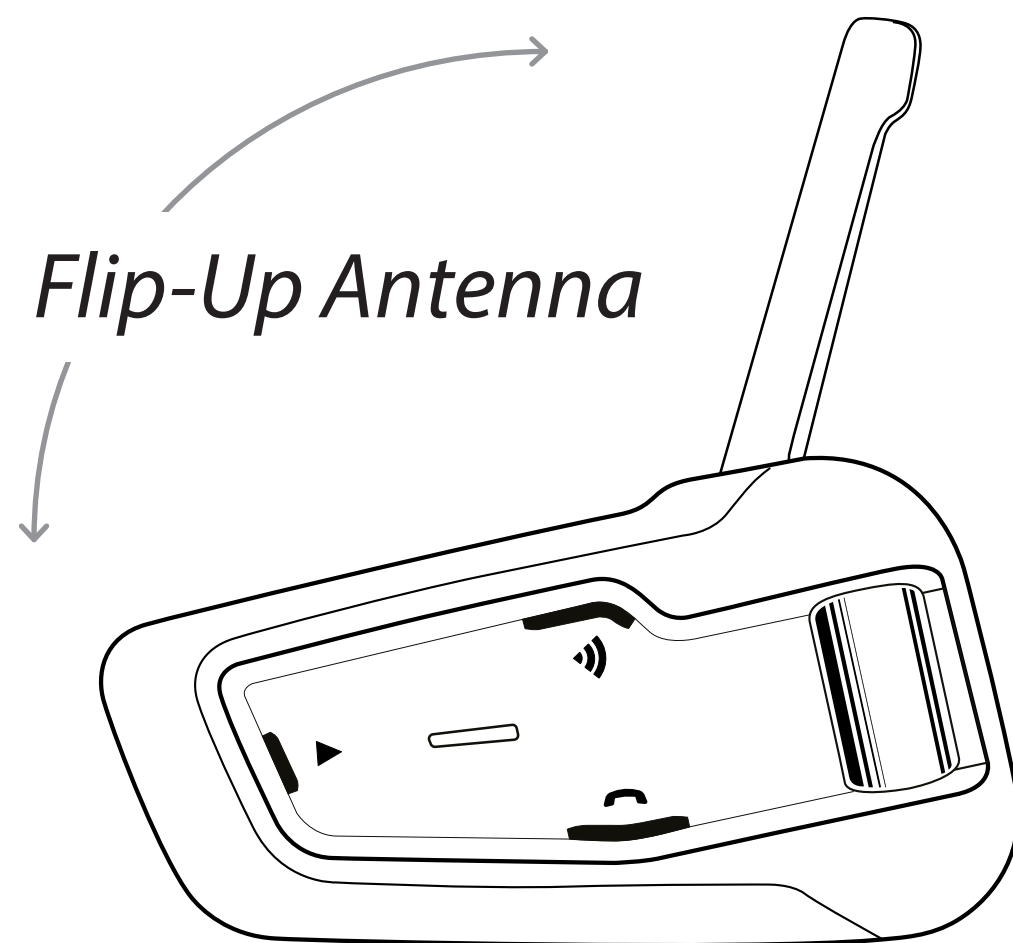
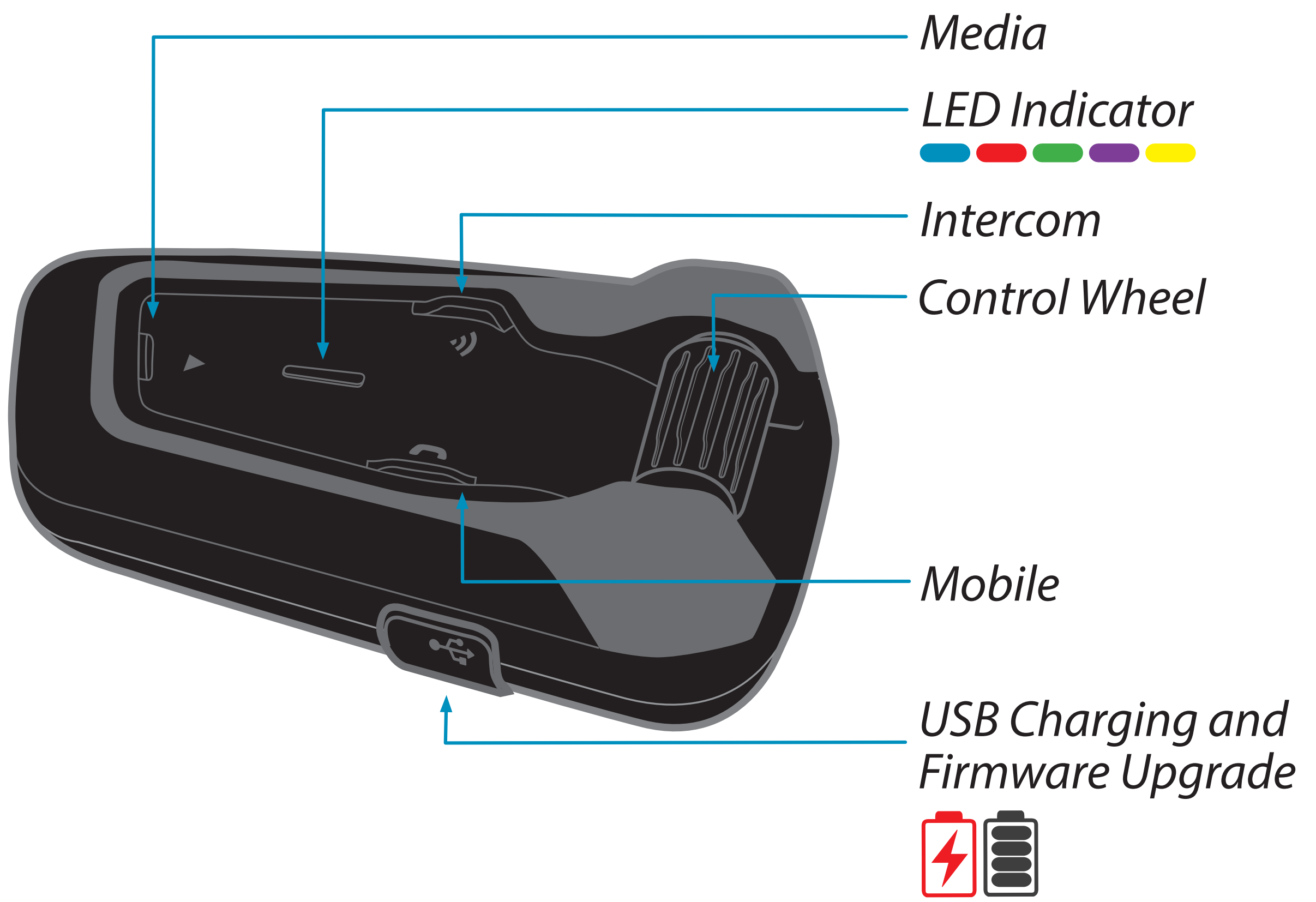
EN POCKET GUIDE



OPERATED BY
NATURAL VOICE



DYNAMIC
MESH
COMMUNICATION

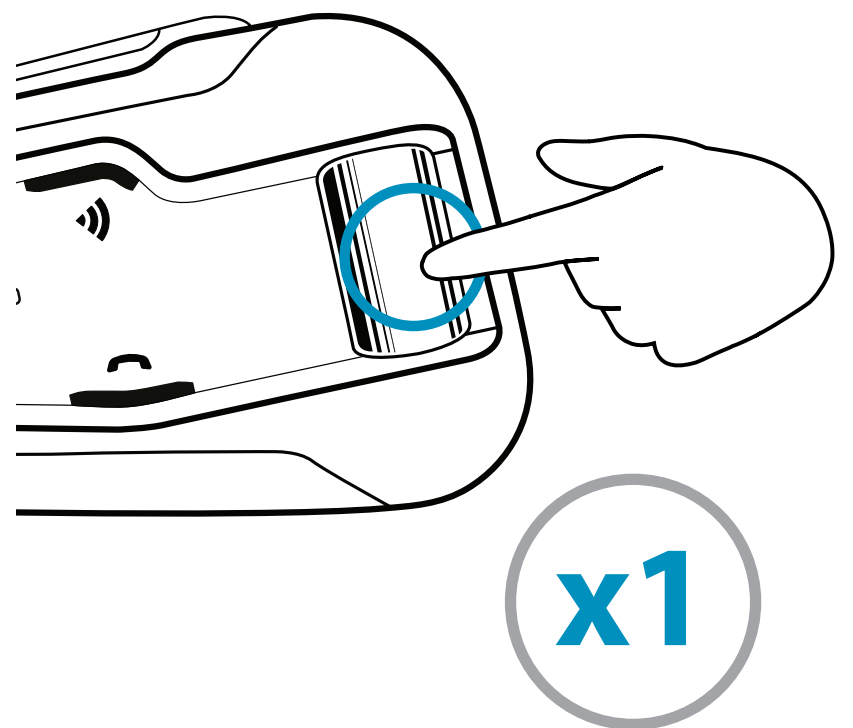
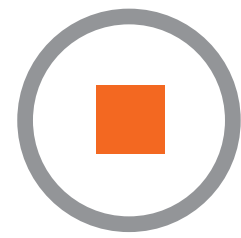
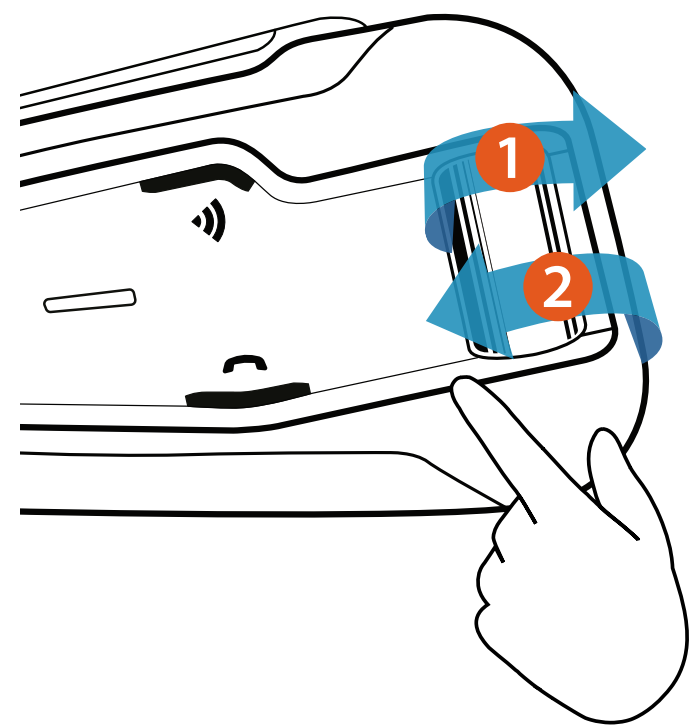
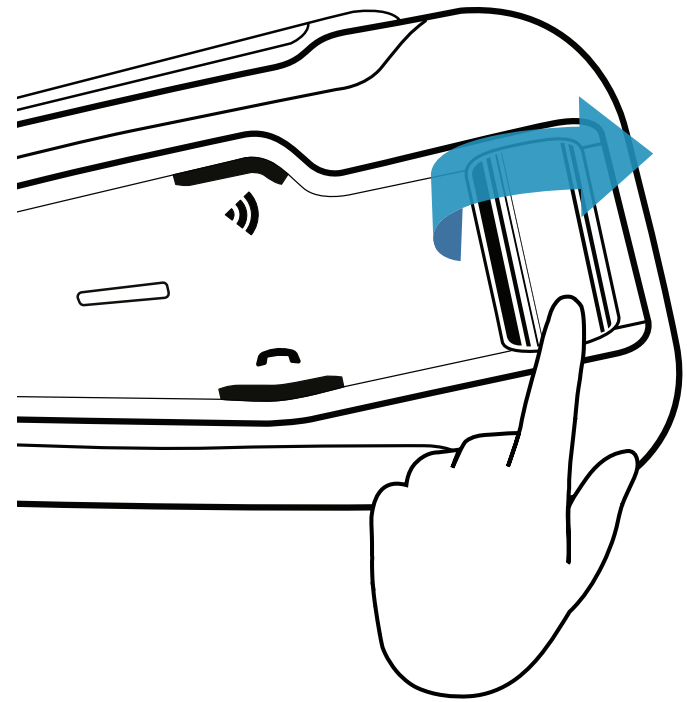
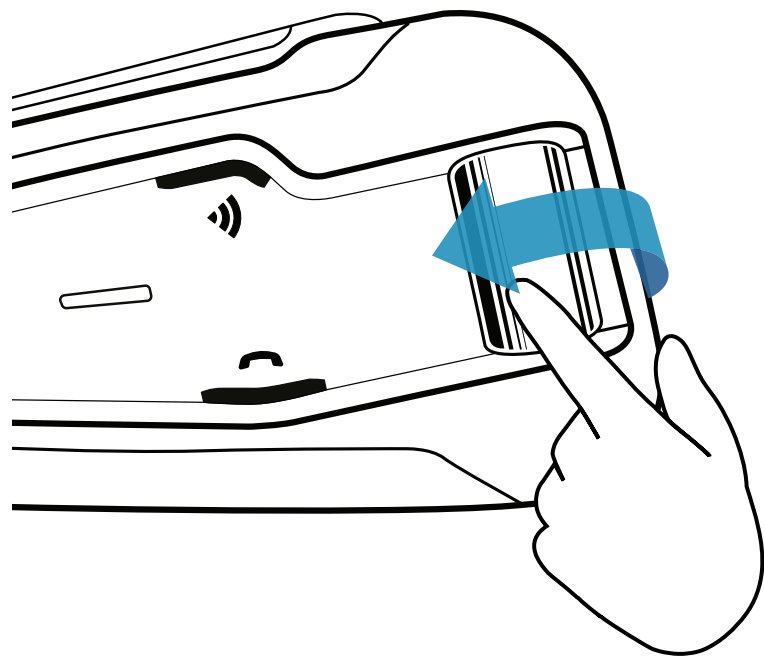
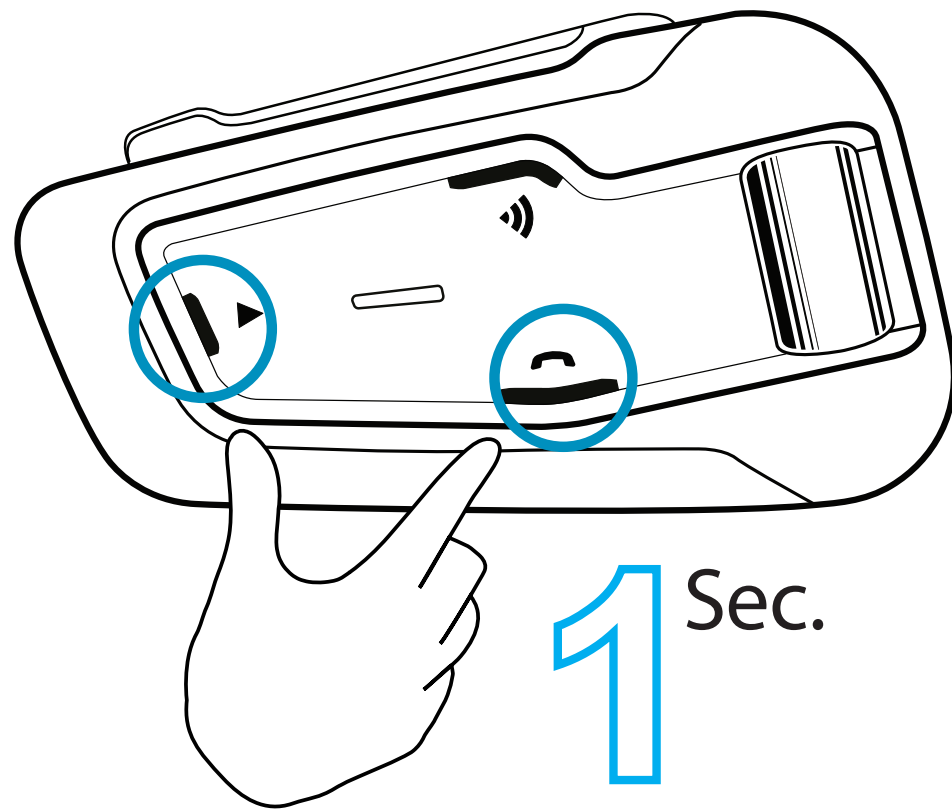


"Language can be changed via the Cardo Connect mobile app"

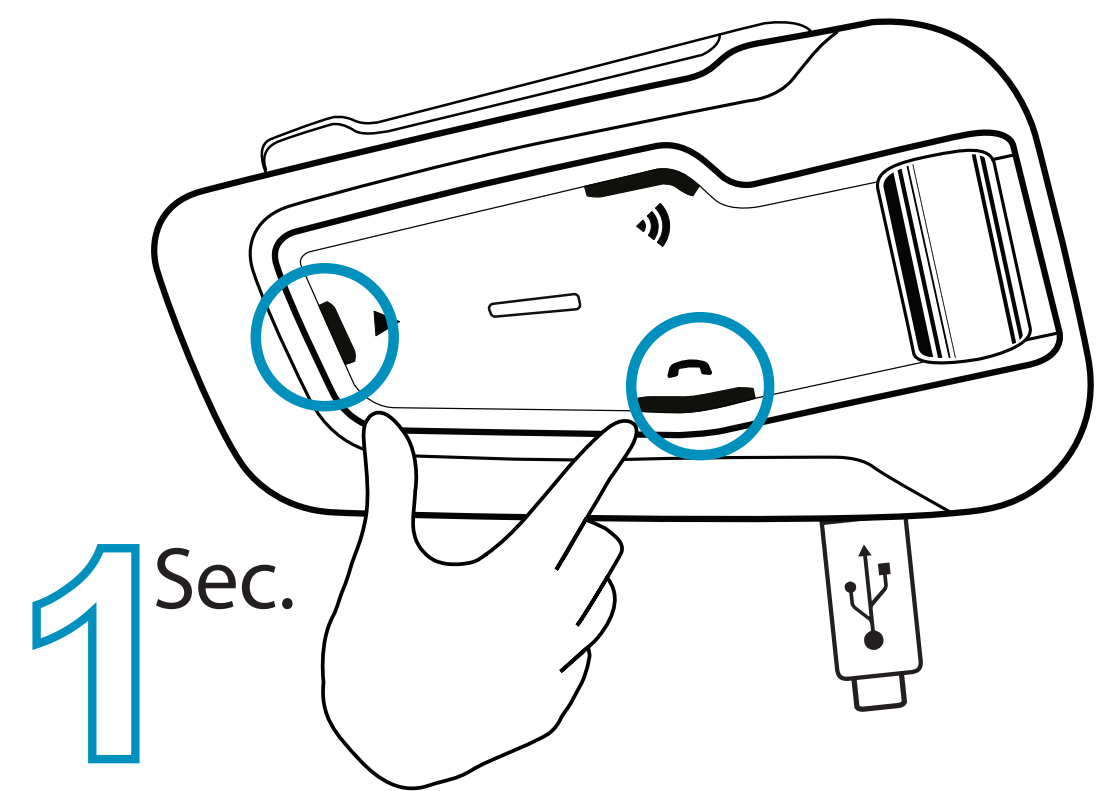
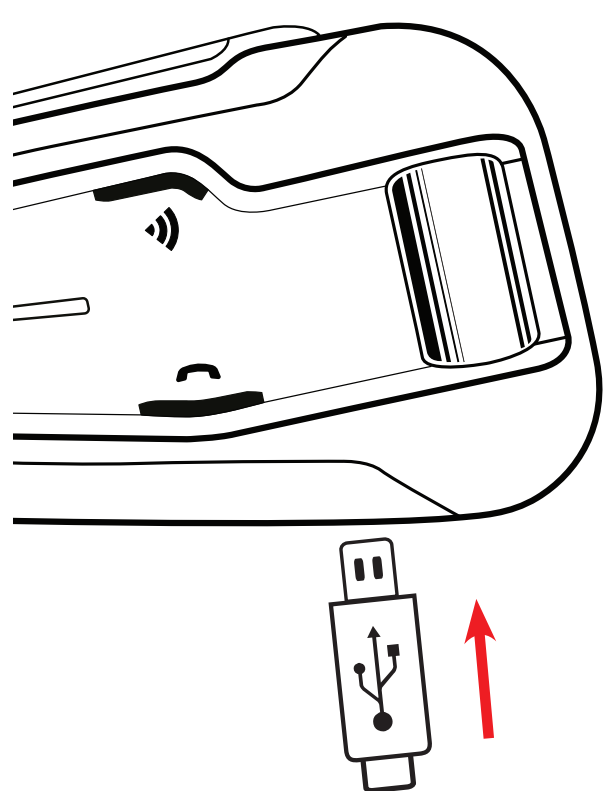
Getting Started



On / Off

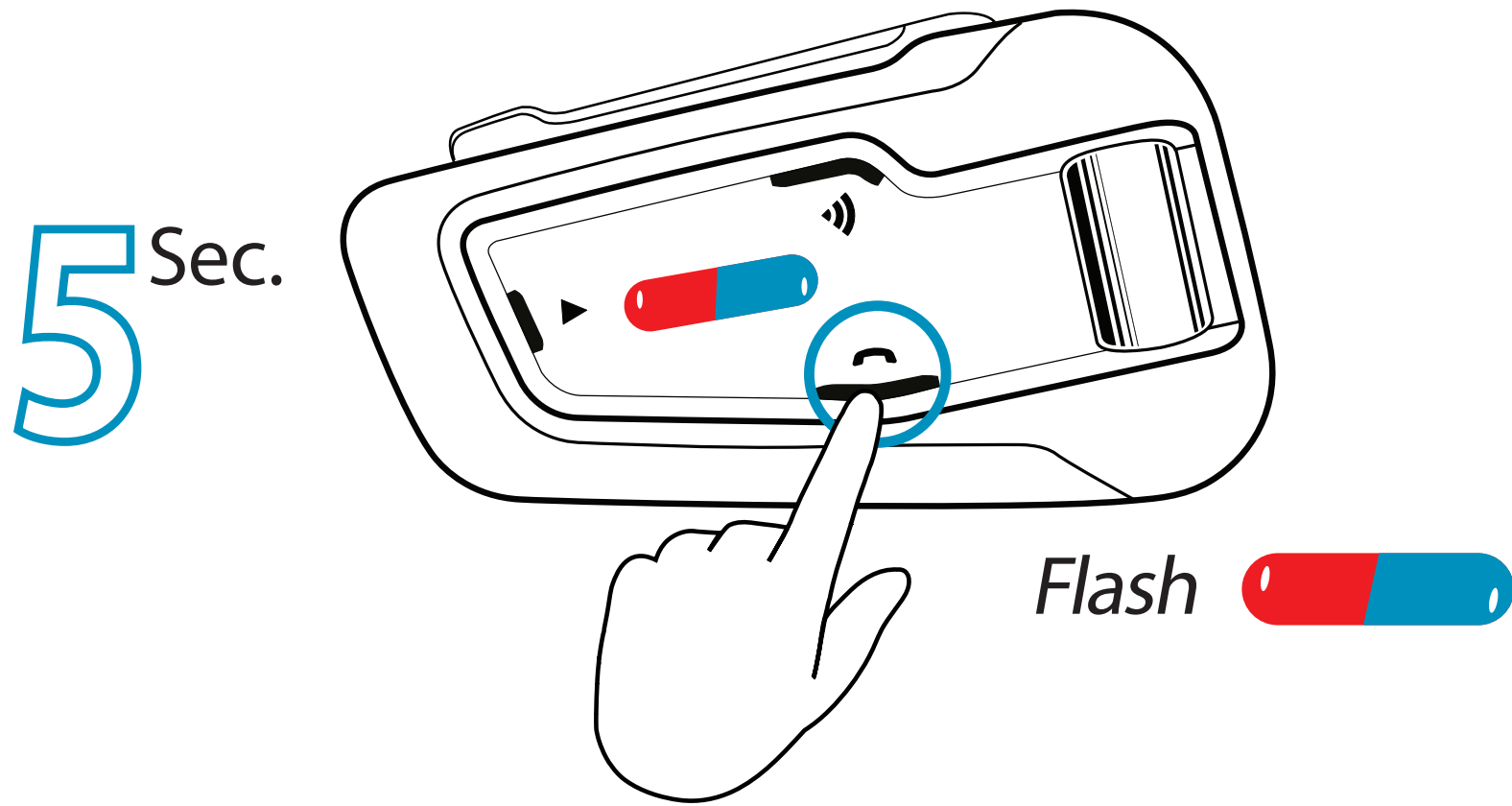


Use while charging



Pair Mobile Devices

1 Initiate Pairing

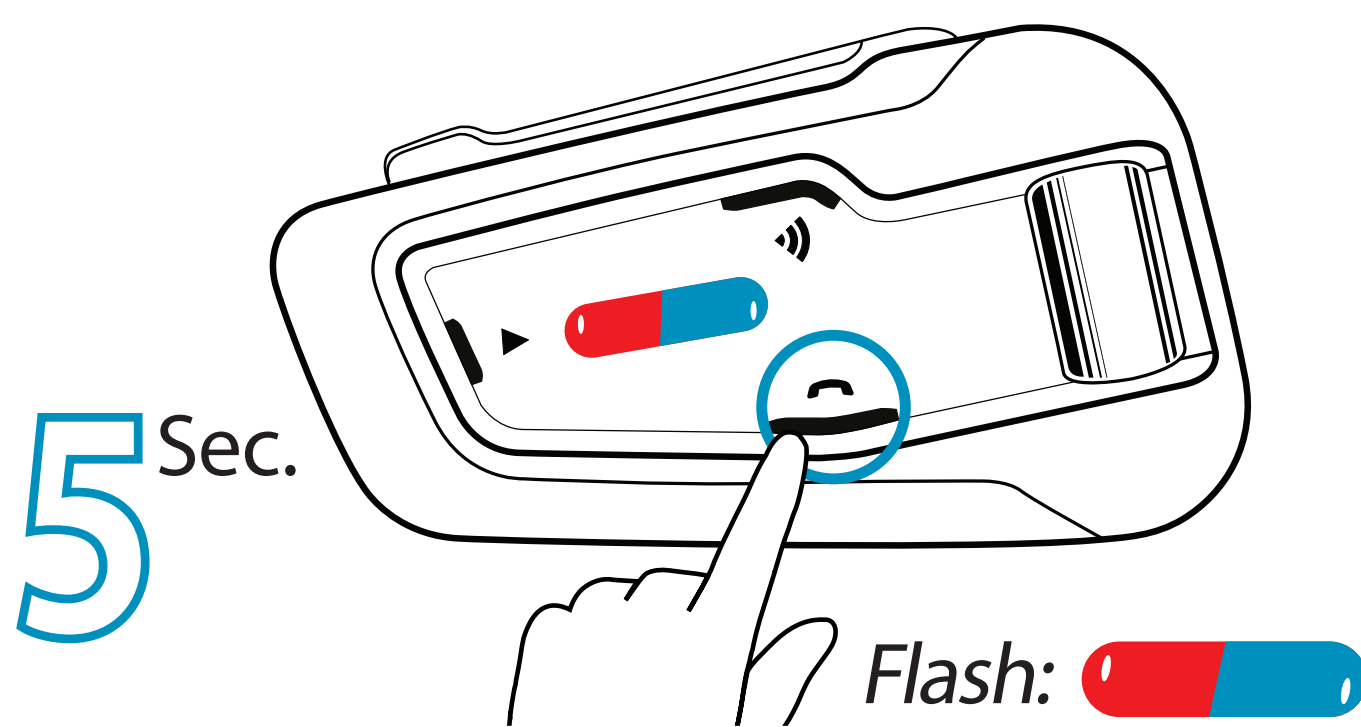


2 Pair Phone

Search for
Bluetooth
devices



Cancel Pairing



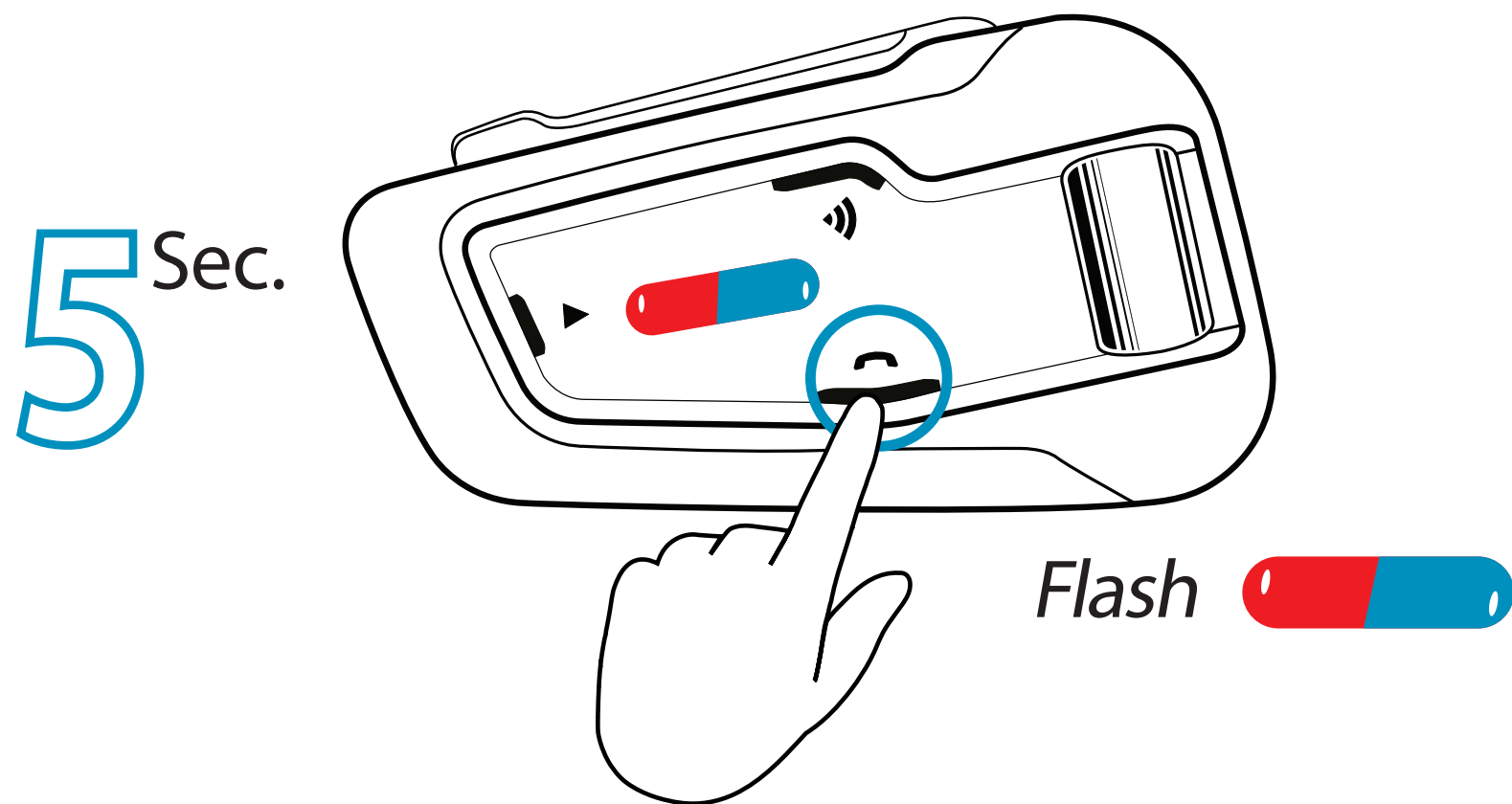
END

Paired successfully

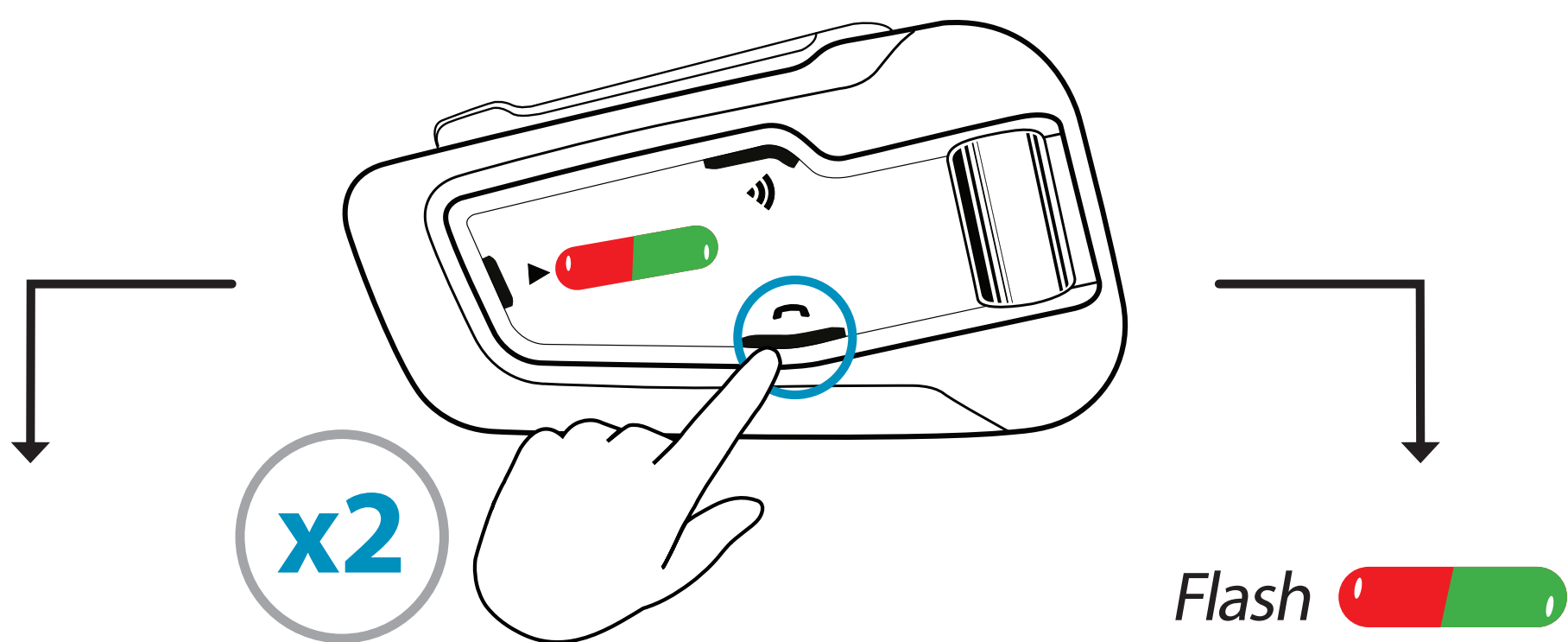
Flash 

Pair Mobile Devices

1 Initiate Pairing



2 Add a 2nd Phone / GPS

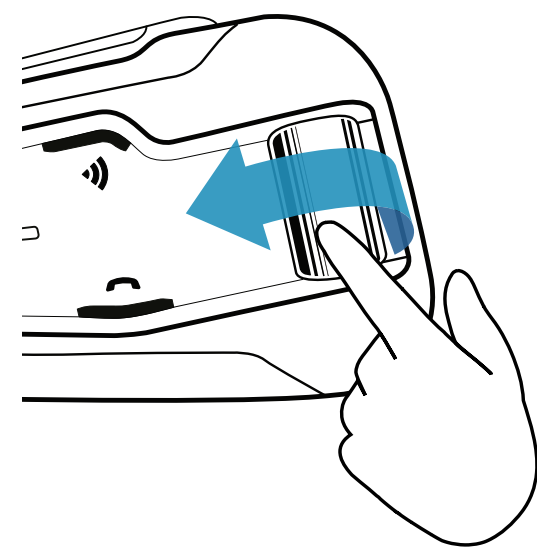


3 Pair Phone

Search for Bluetooth devices



3 Pair GPS



3a

Search for Bluetooth devices on the GPS



END

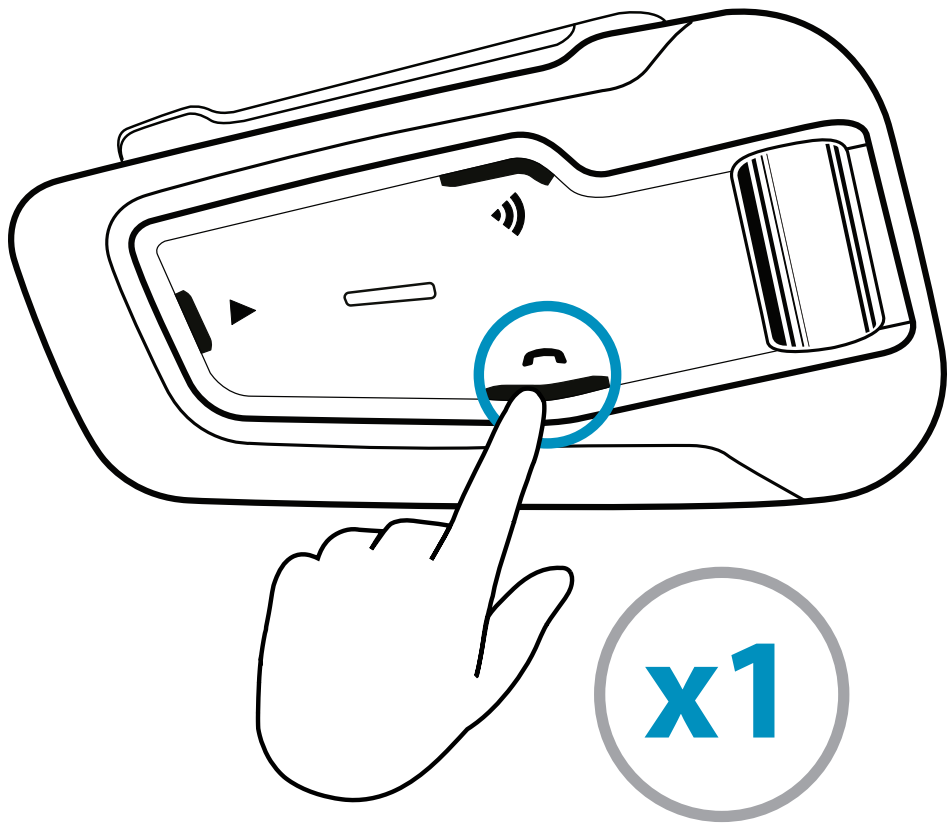
Paired successfully

Flash

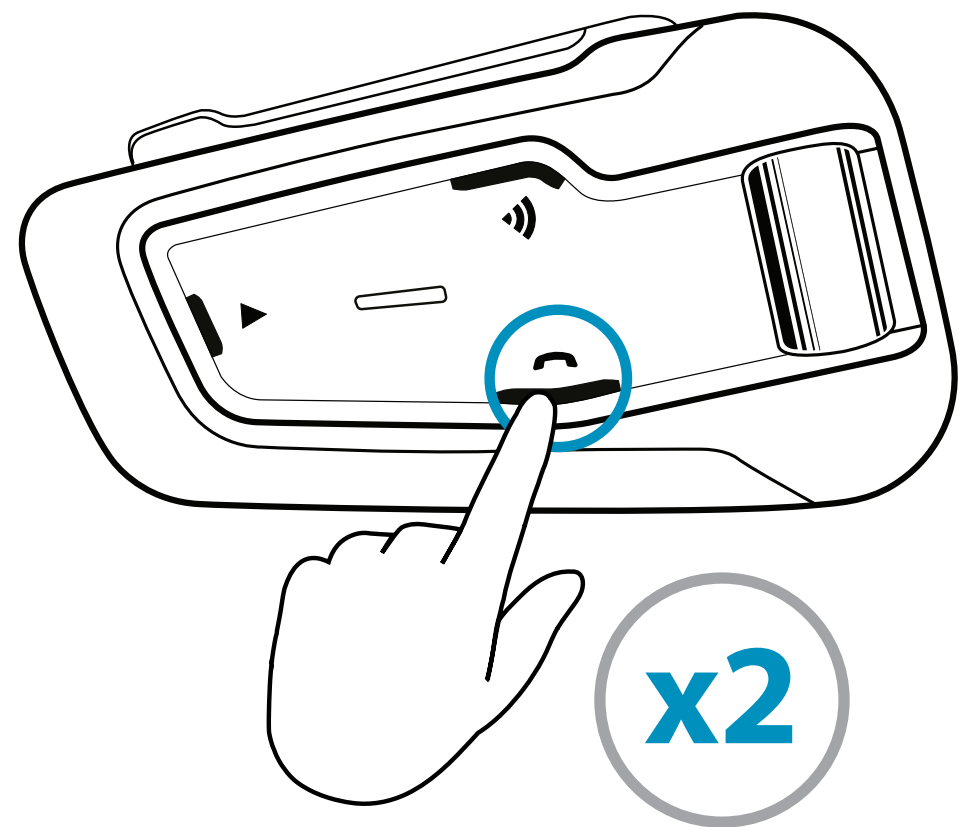
Phone



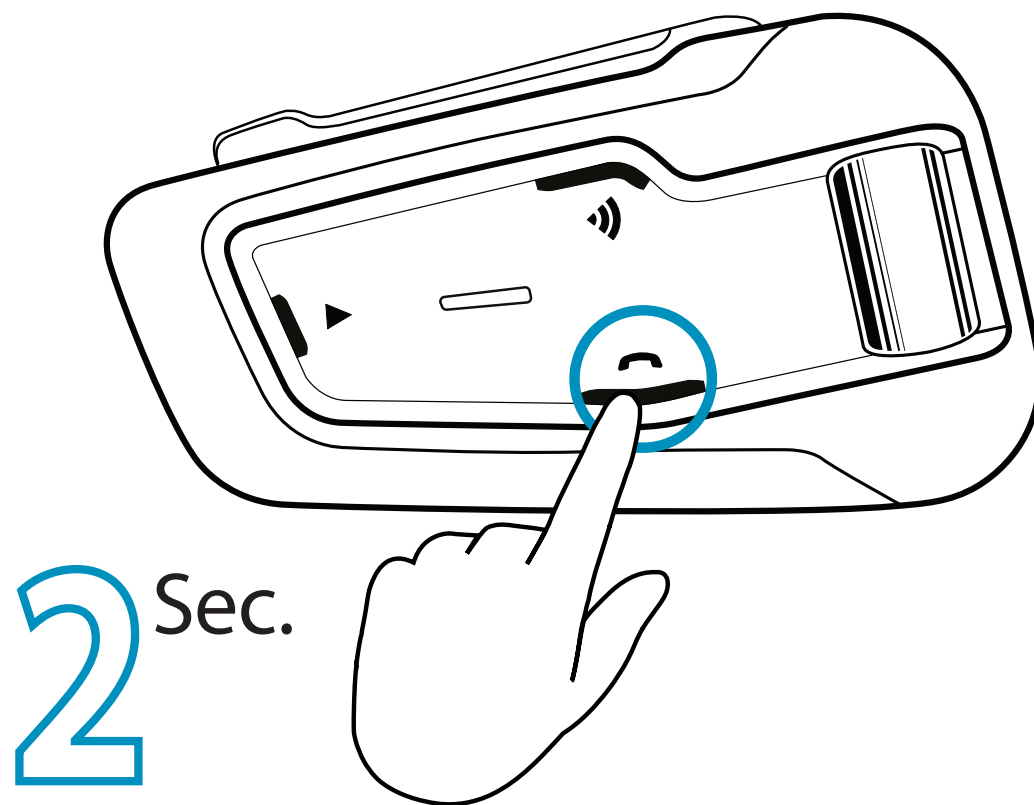
Voice Dial



Redial



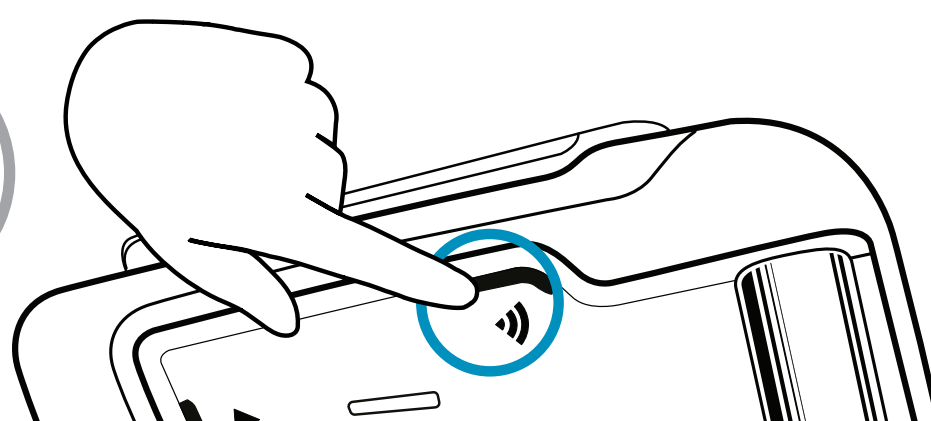
Speed Dial



Set via app

Share call with DMC group

Bridging active phone calls to the DMC group



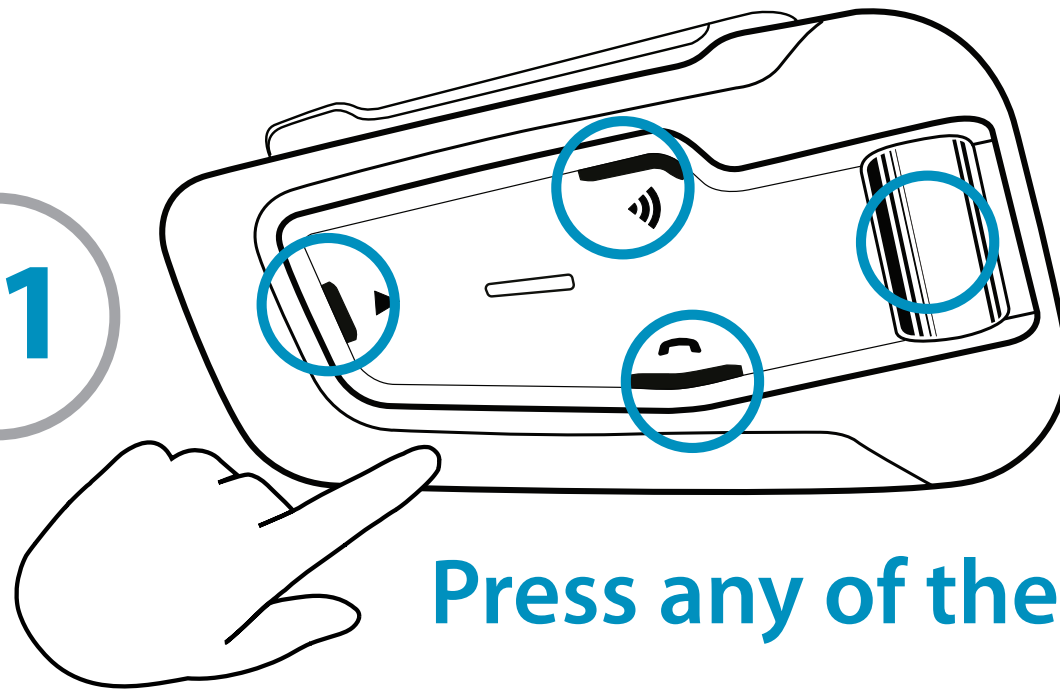
Start / Stop sharing call

Phone



Answer a Call

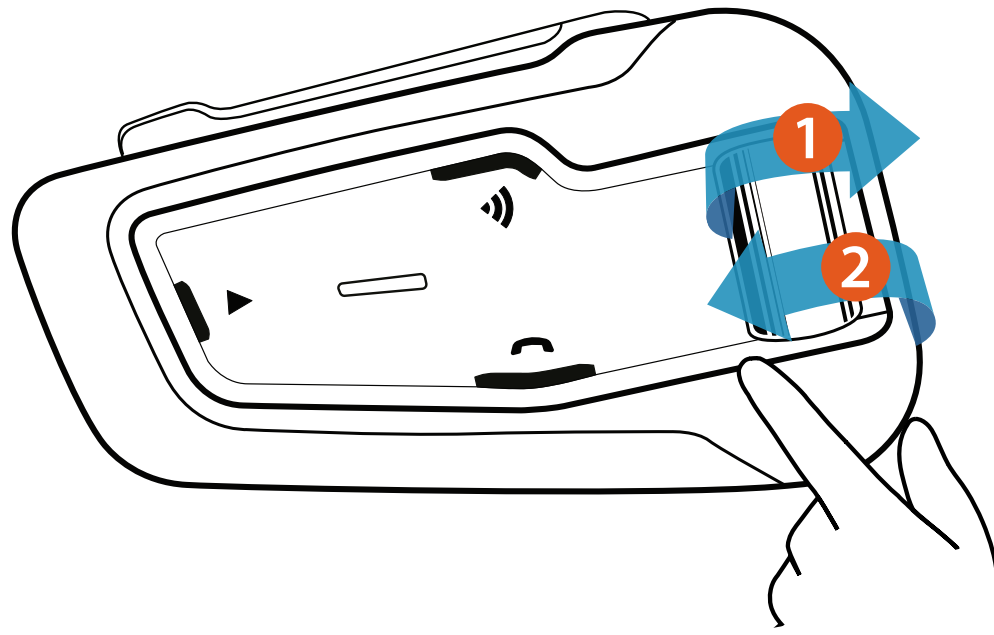
x1



Press any of these buttons

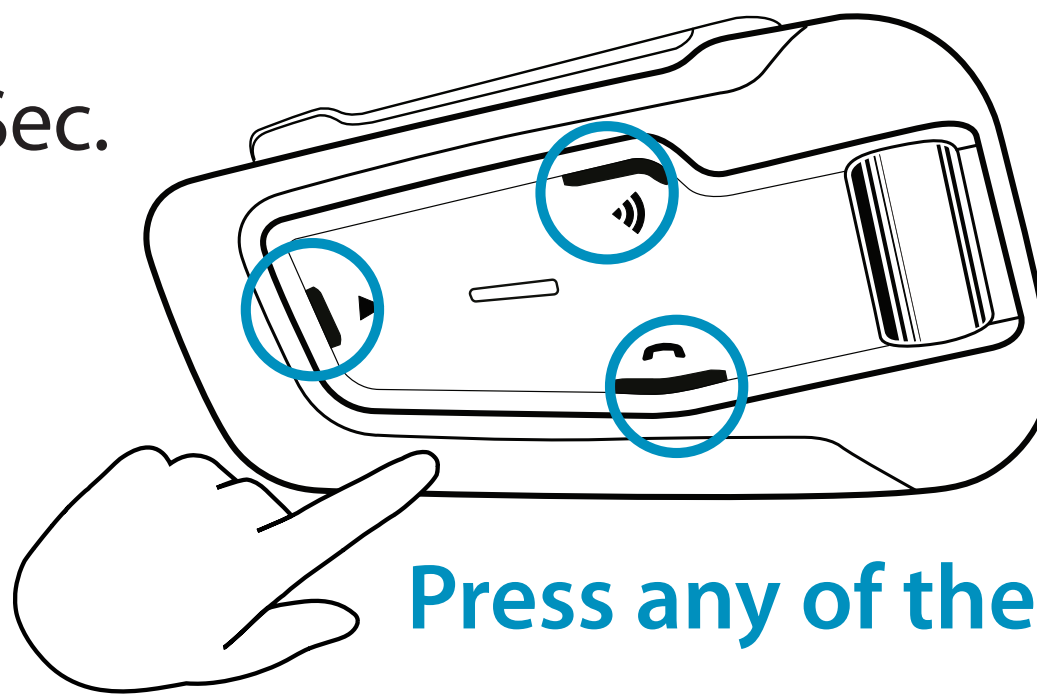


Ignore a Call



Reject a Call

2^{Sec.}

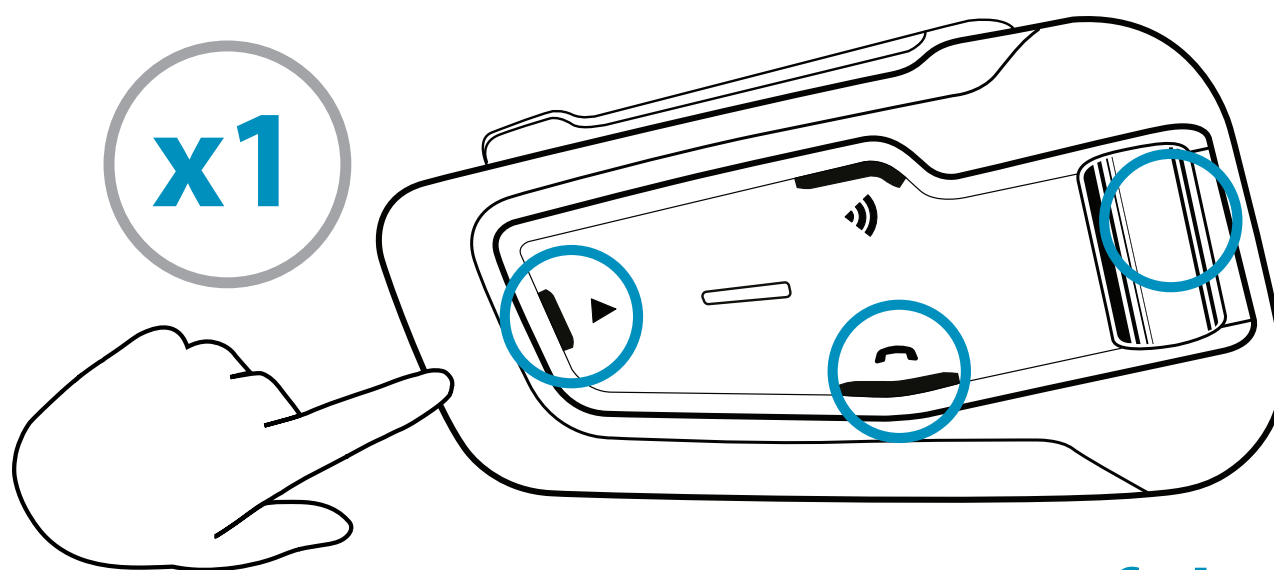


Press any of these 3 buttons



End a Call

x1



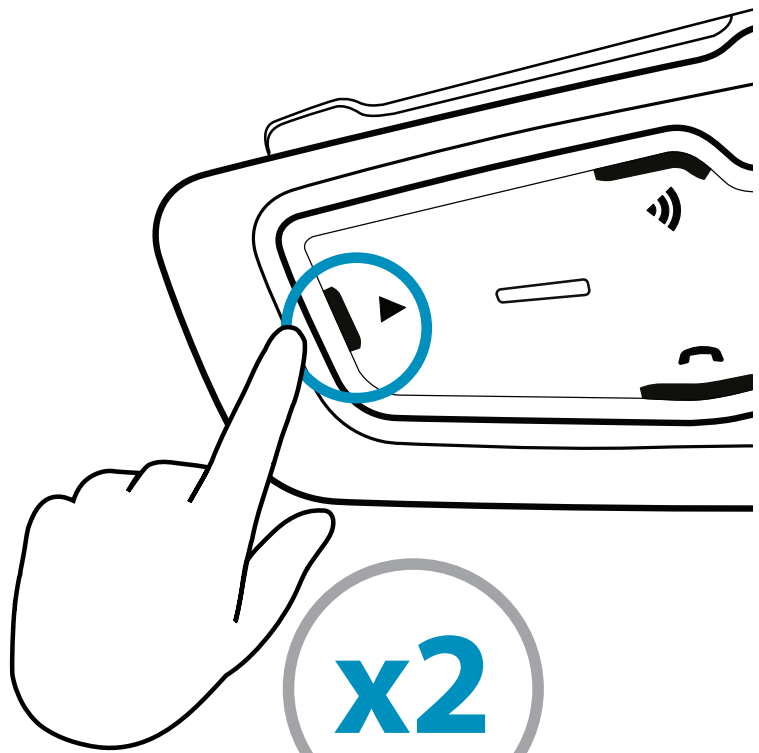
Press any of these 3 buttons

Audio

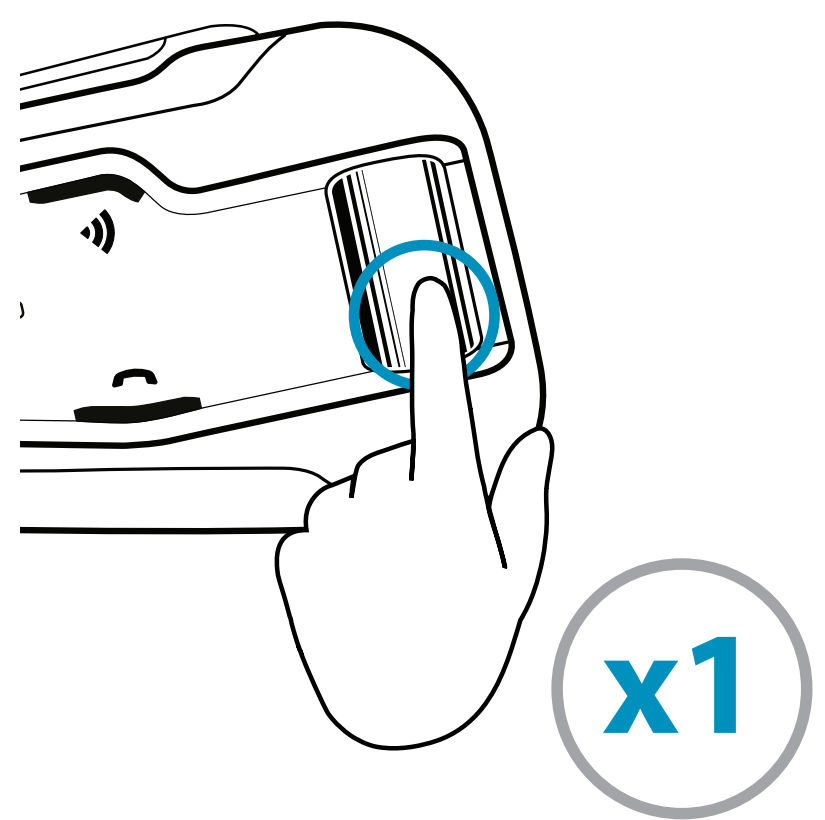
FM Radio



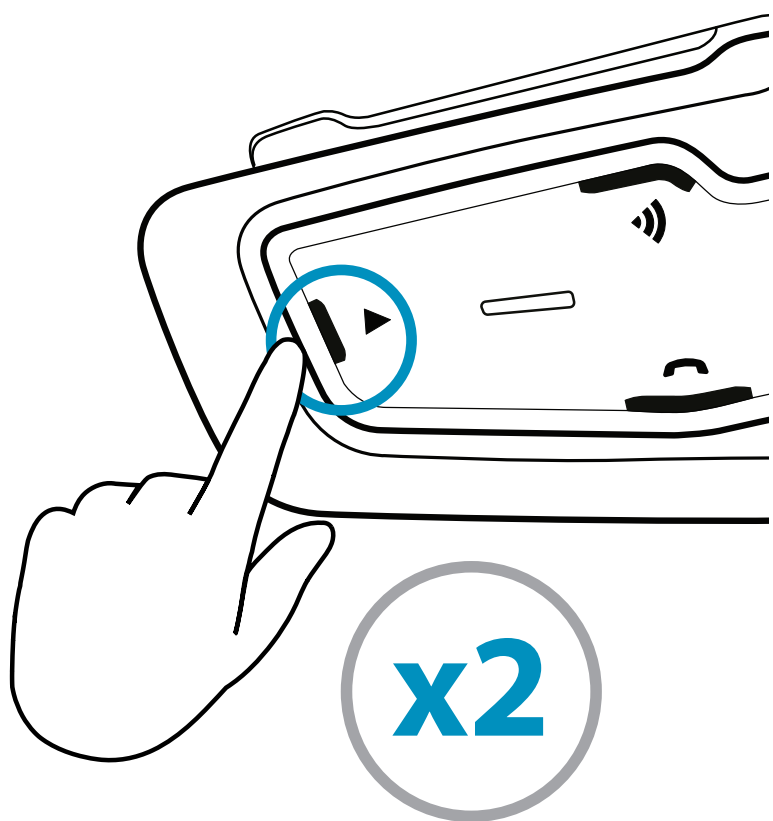
On



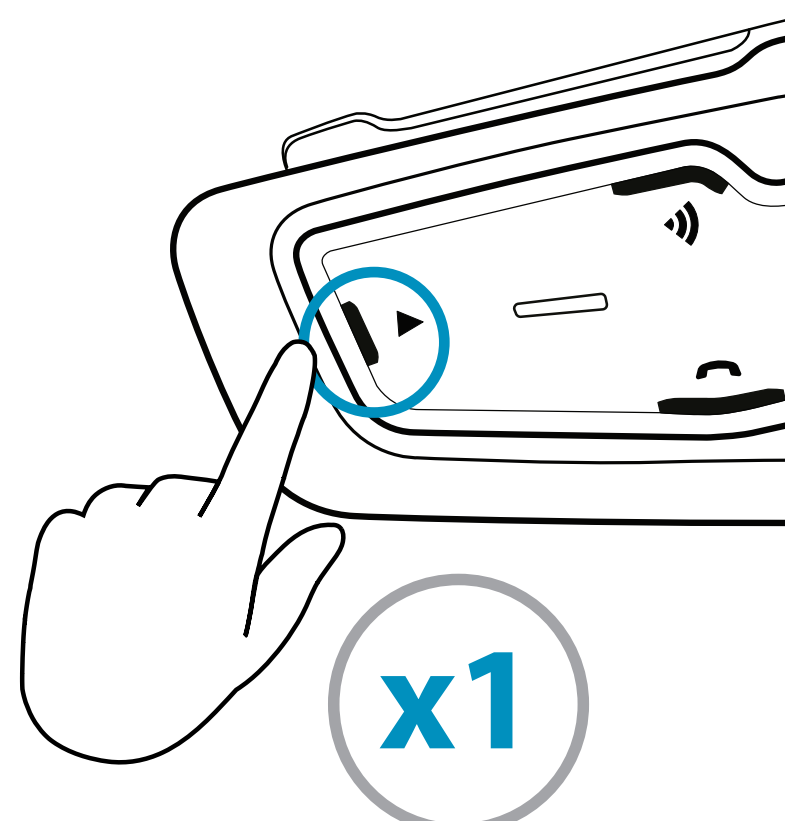
Off



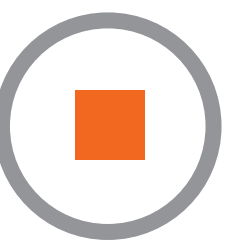
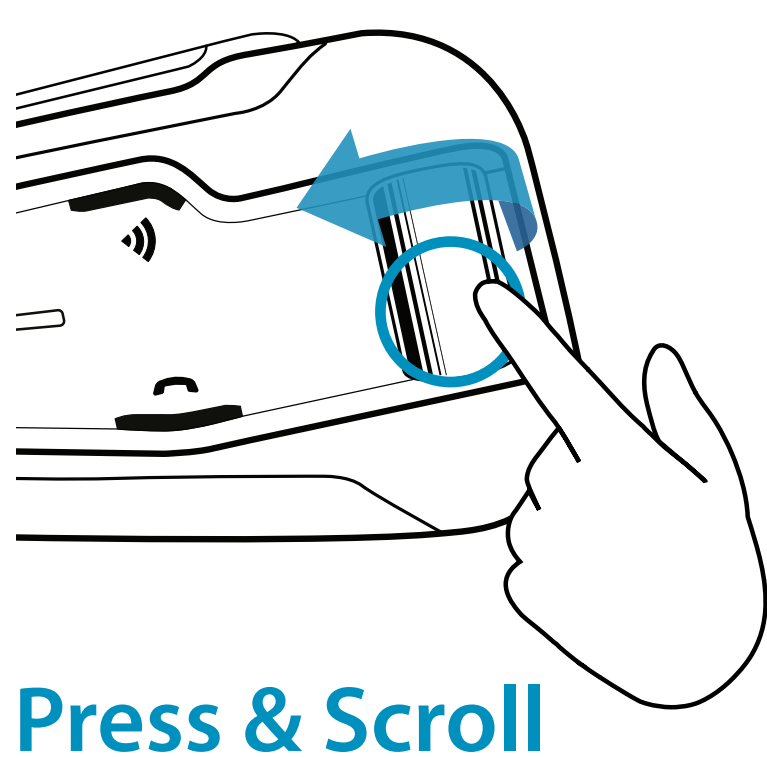
Previous



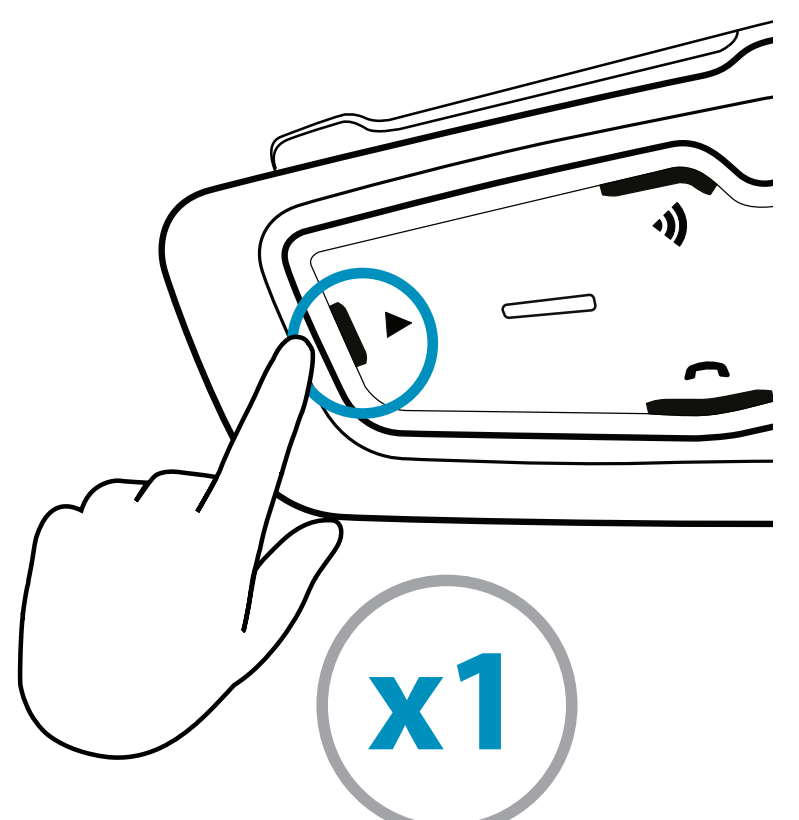
Next



Auto Scan



Stop Scan

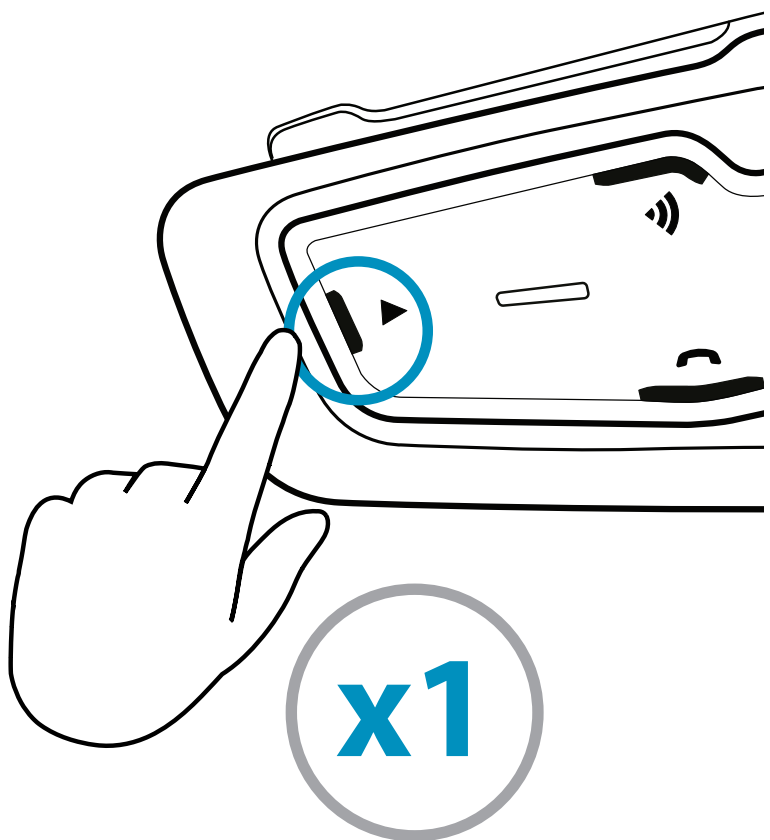


Audio

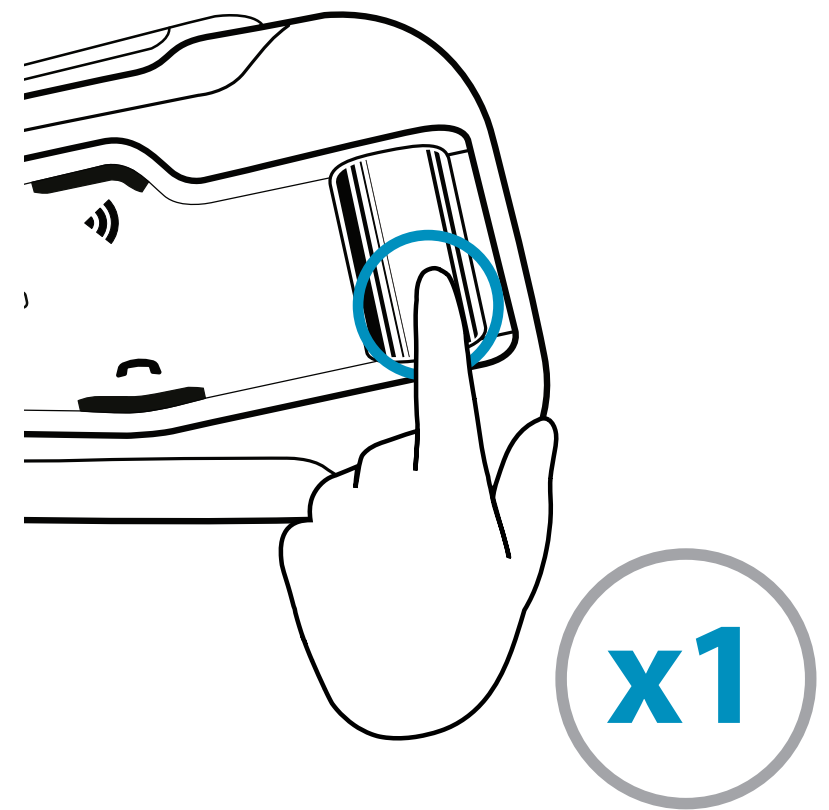
Music



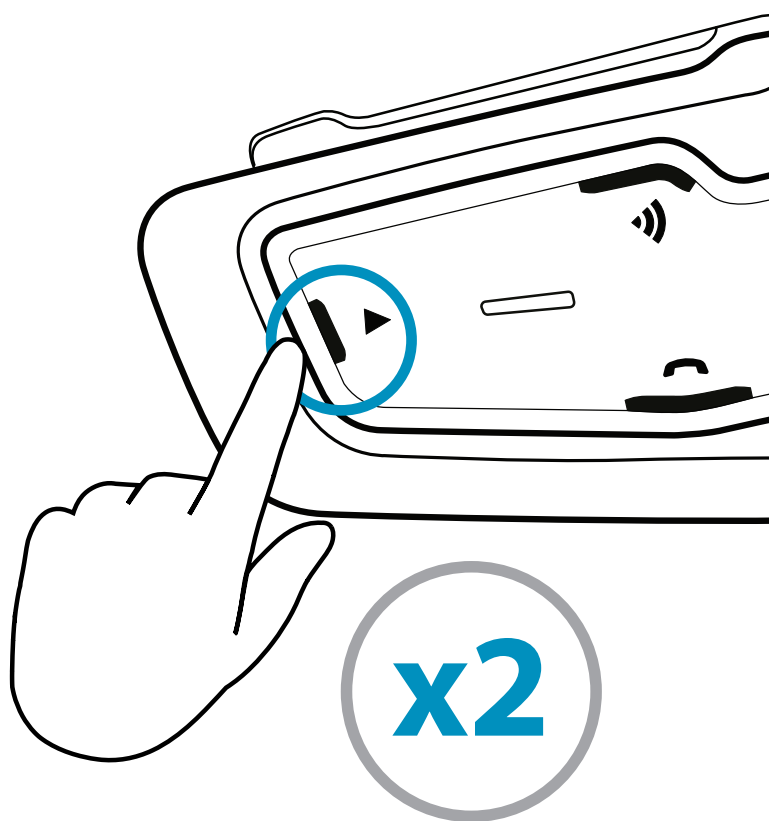
On



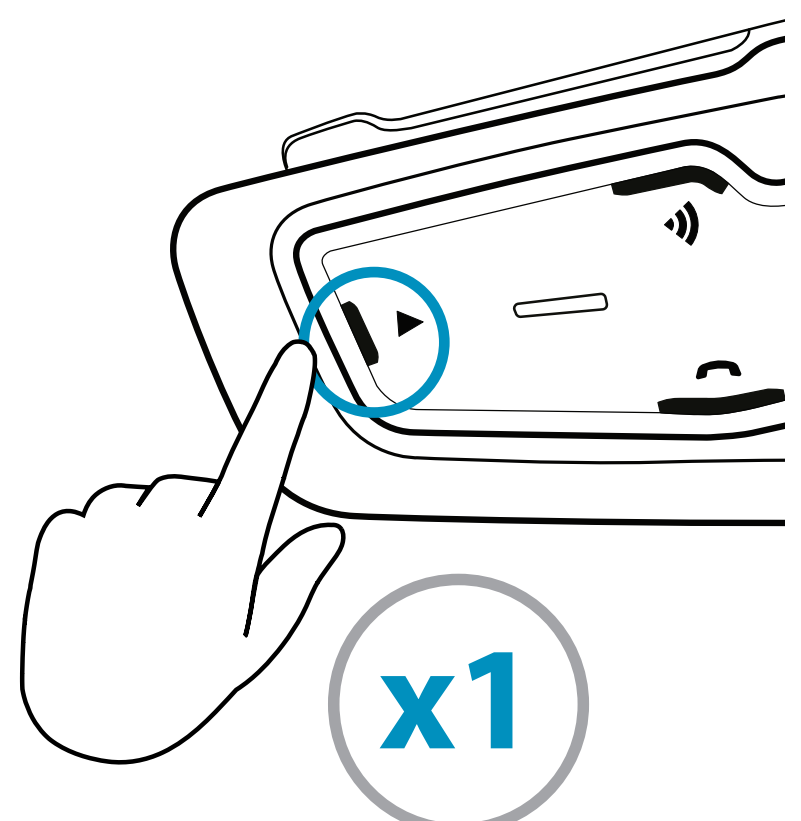
Off



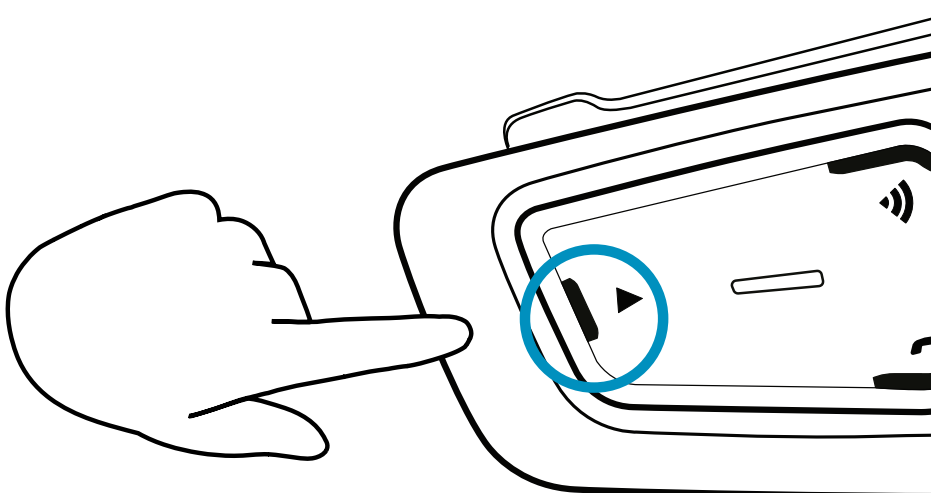
Previous



Next



FM/ Music Toggle



2 Sec.

Sharing Audio

(When in Bluetooth mode)
See opposite page



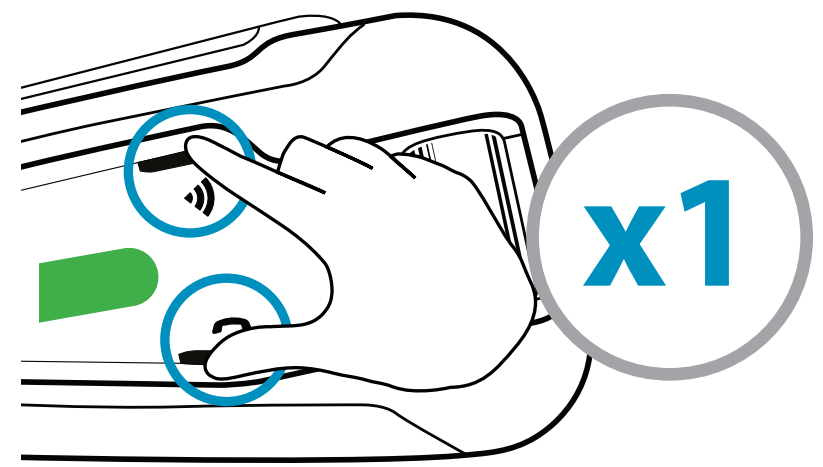
2 Sec.

Start / Stop sharing

DMC Intercom Grouping

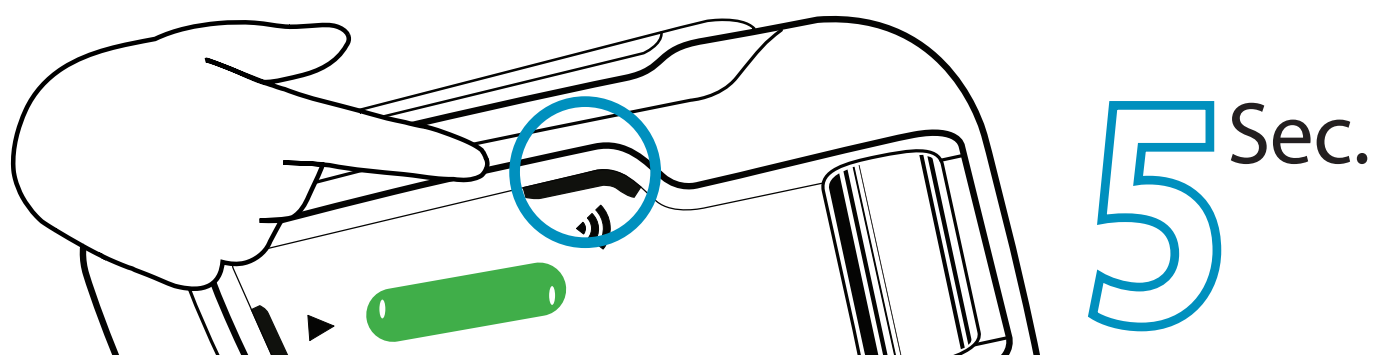
Verify you are in  DMC Mode *Flash* 

 **Bluetooth / DMC**
Change Intercom Mode



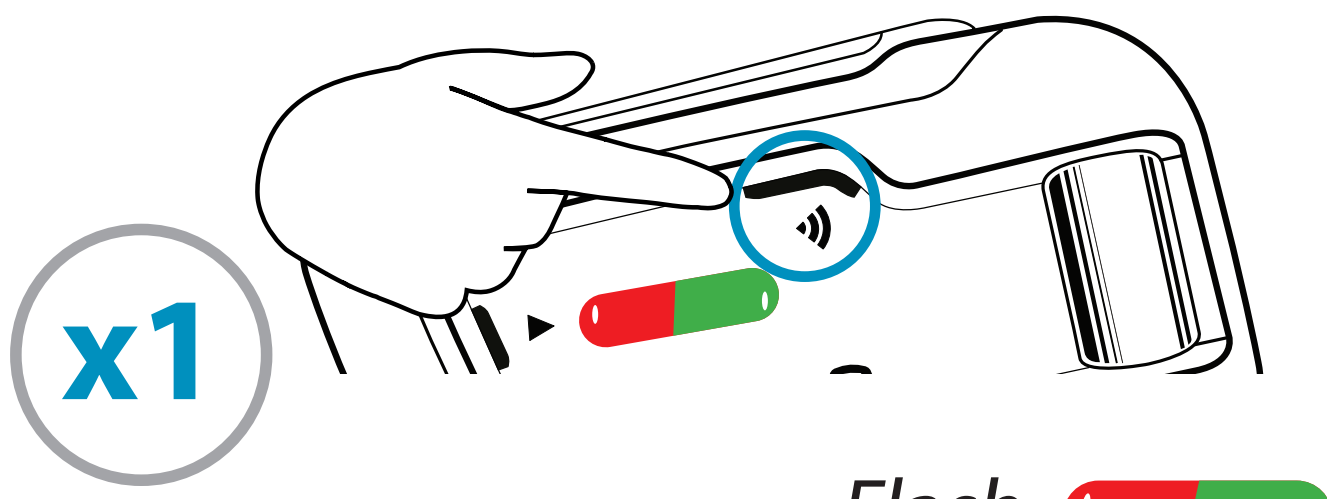
Create / Join a new DMC Group

1 Admin + all group members / new member



Rapid Flash 

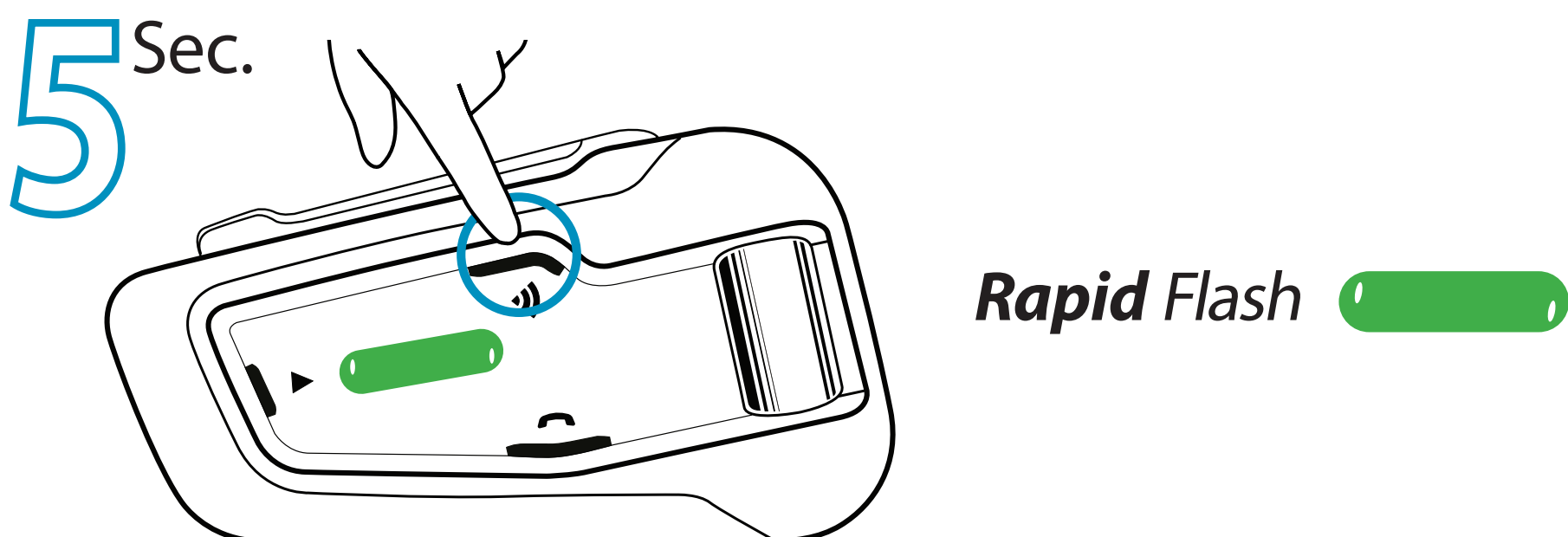
2 **THEN ONLY ONE GROUP ADMIN**



Flash 

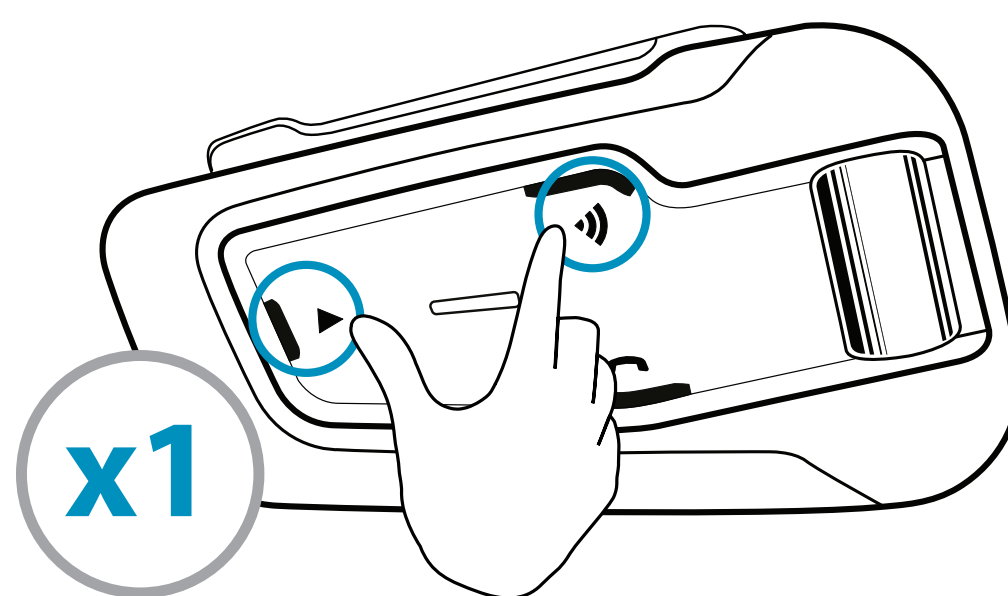
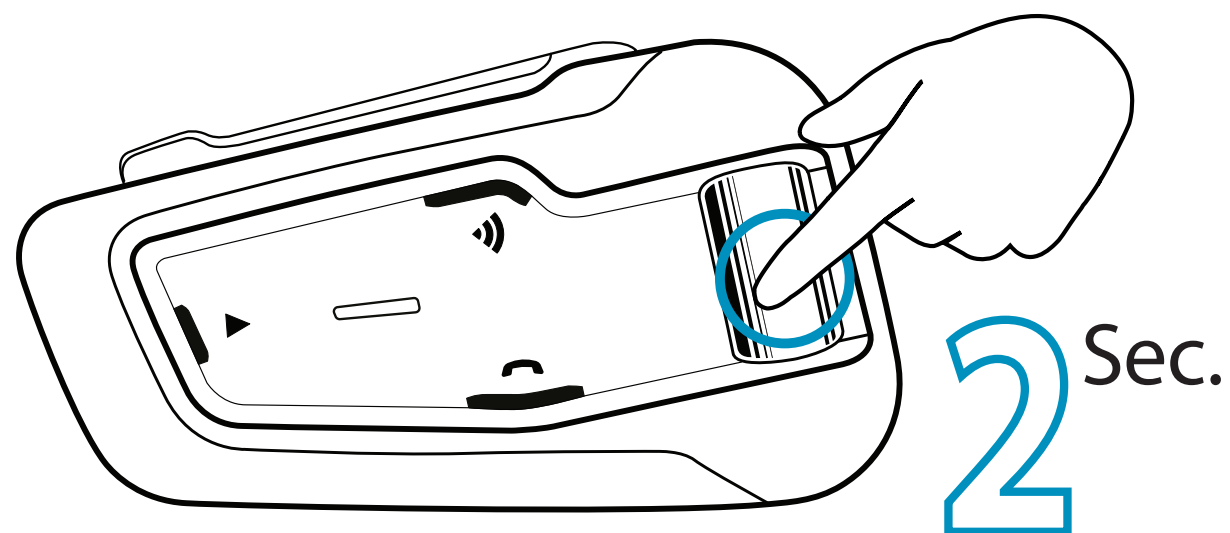
Grouped successfully *Flash* 

Cancel Grouping



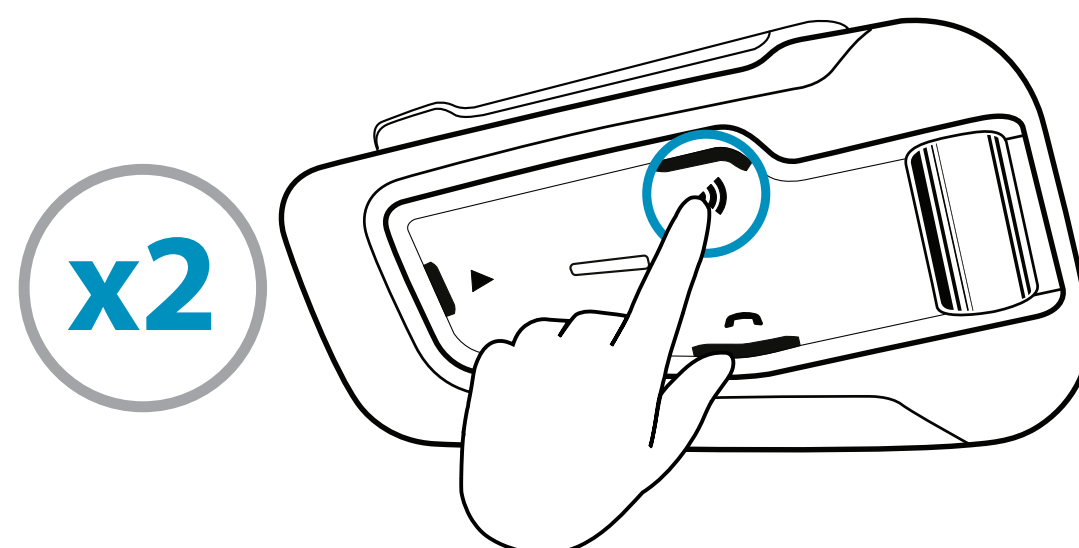
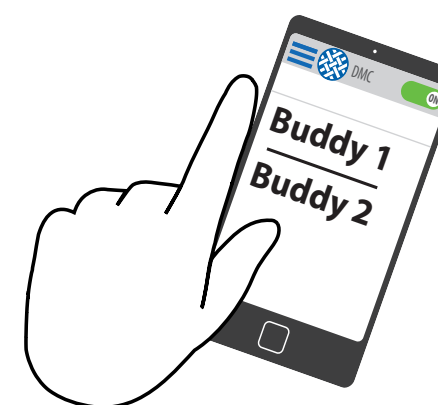
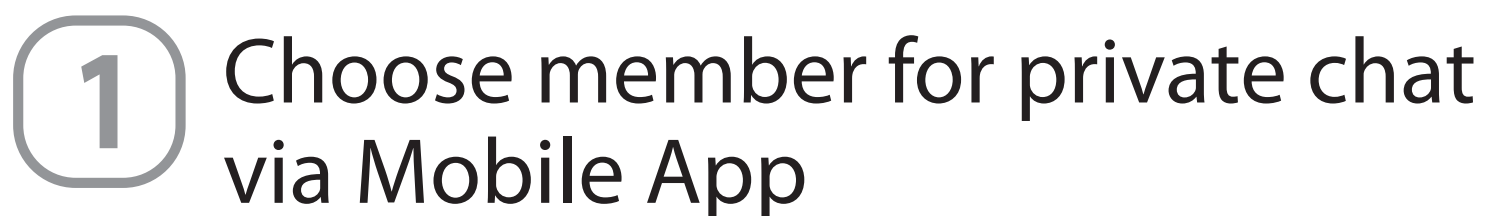
Using DMC Intercom

Talking - always on

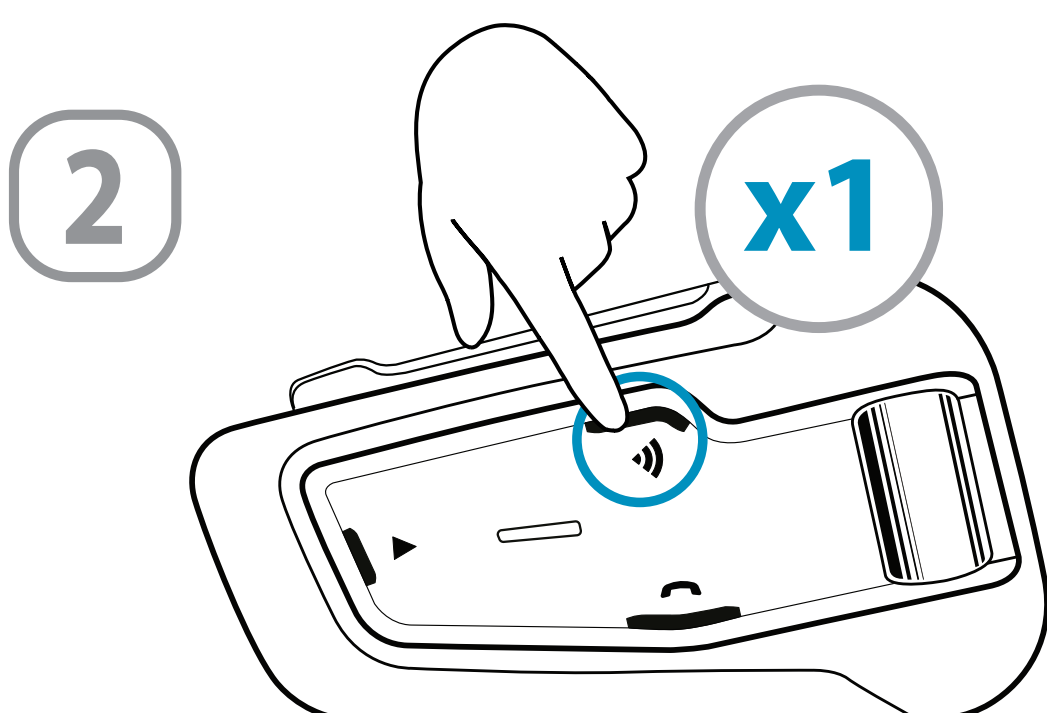


Private Chat

Chat privately with one of the group members



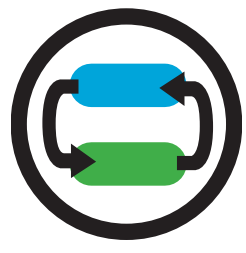
Bridge (add) a non-DMC passenger



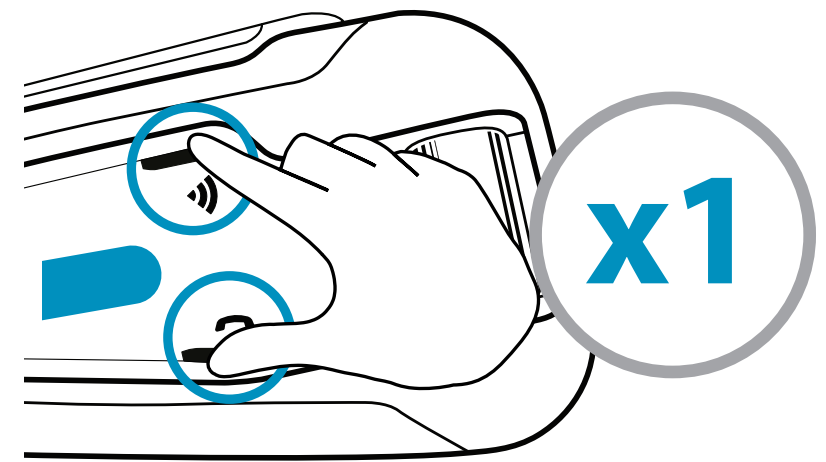
Start / Stop bridging

Set a Cardo non DMC Intercom

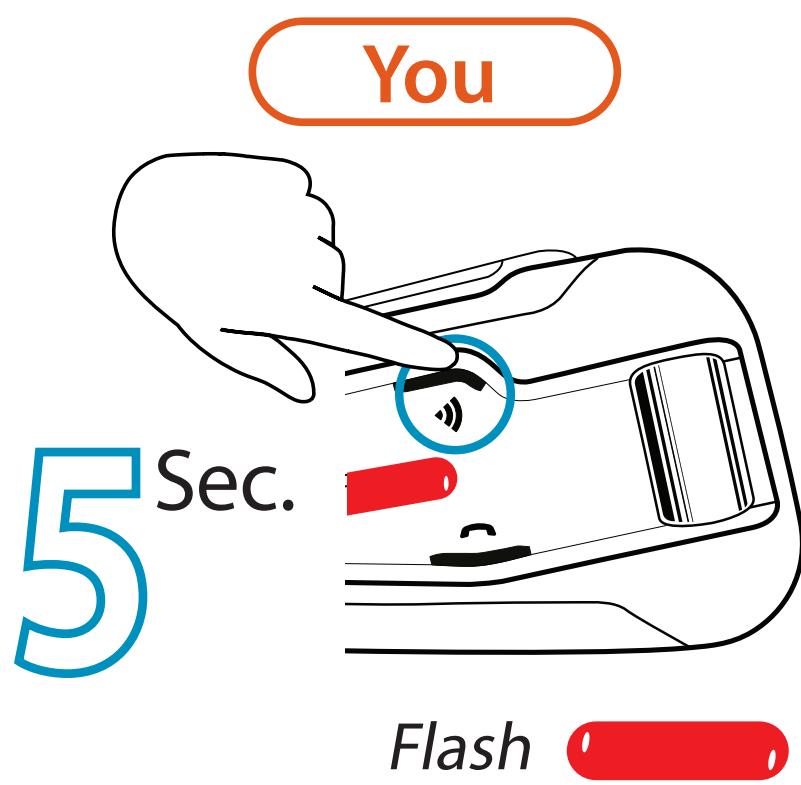
Verify you are in  Bluetooth Mode *Flash* 



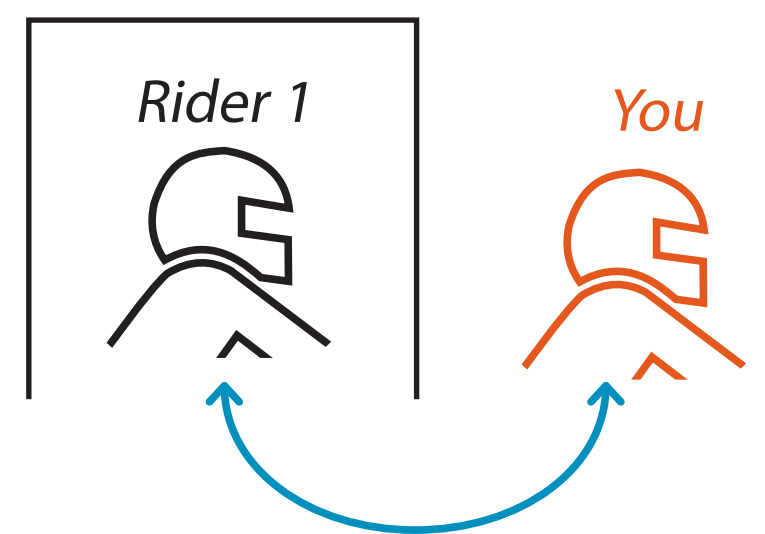
Bluetooth / DMC
Change Intercom Mode



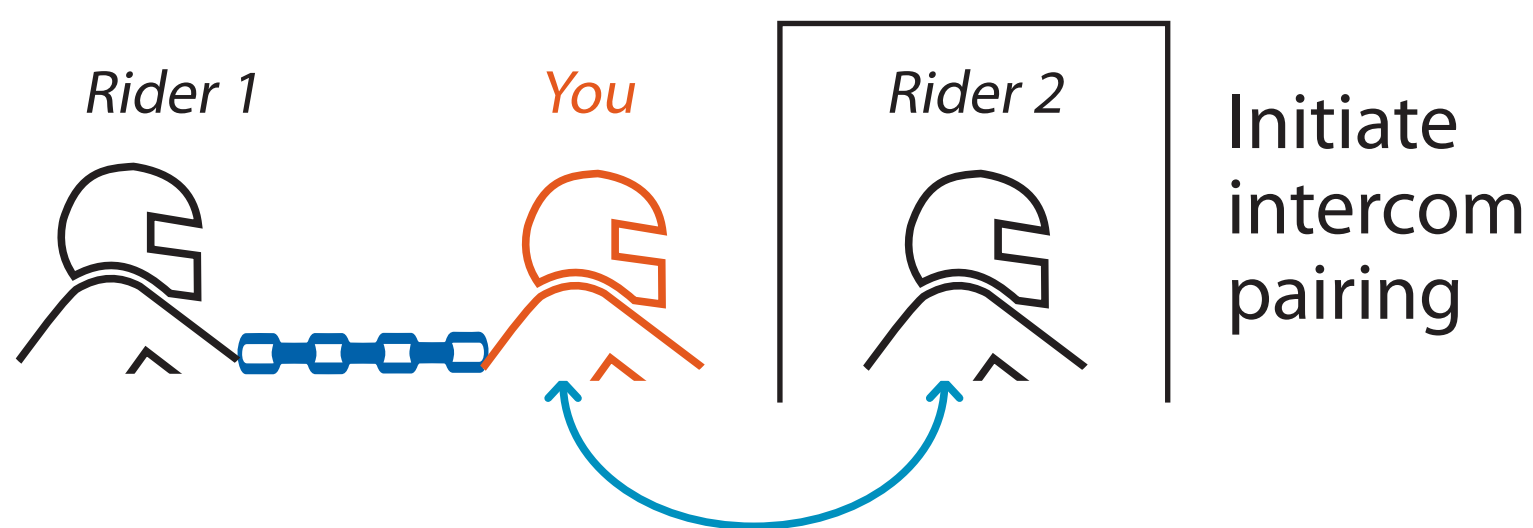
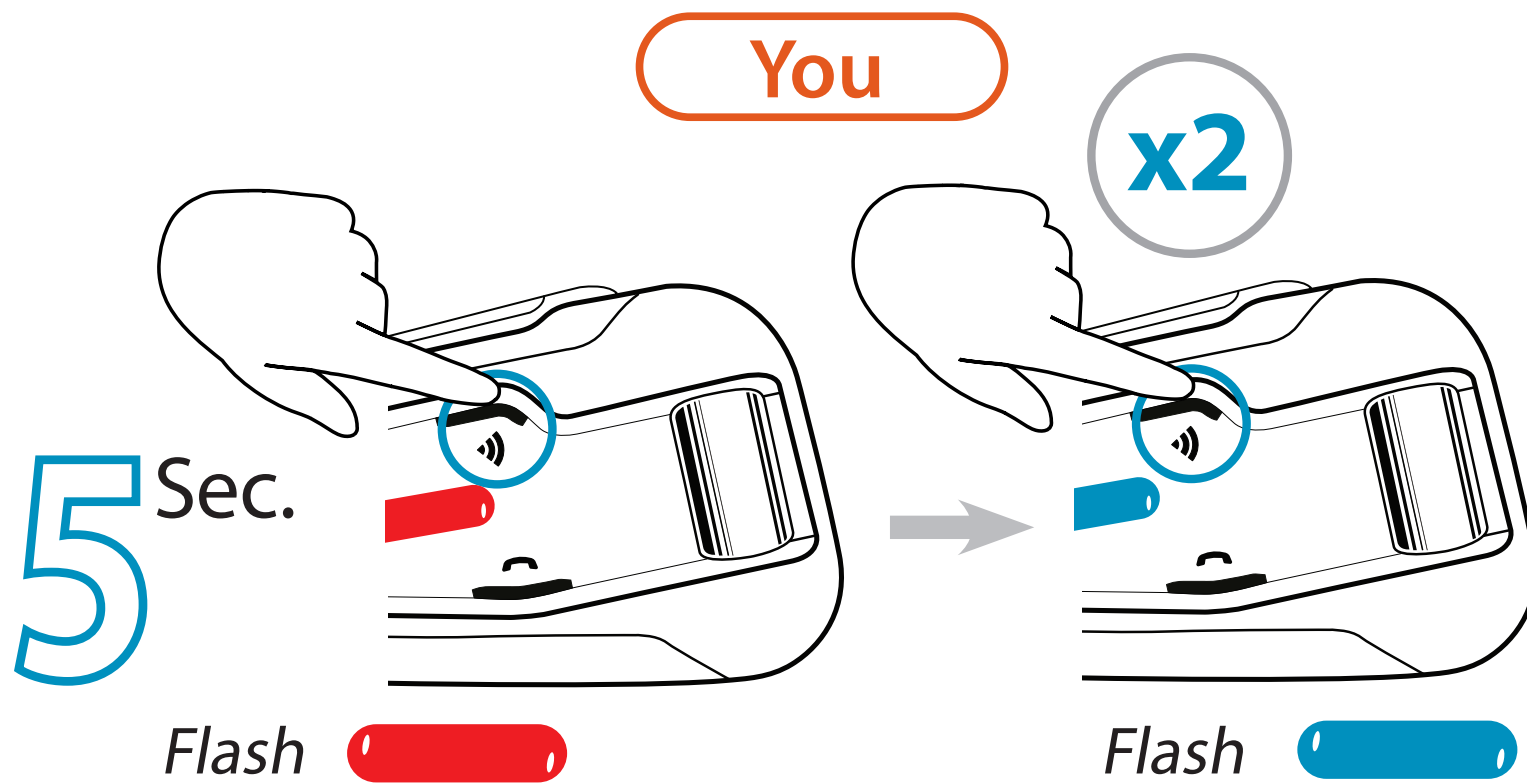
2-way
pairing



Initiate intercom pairing

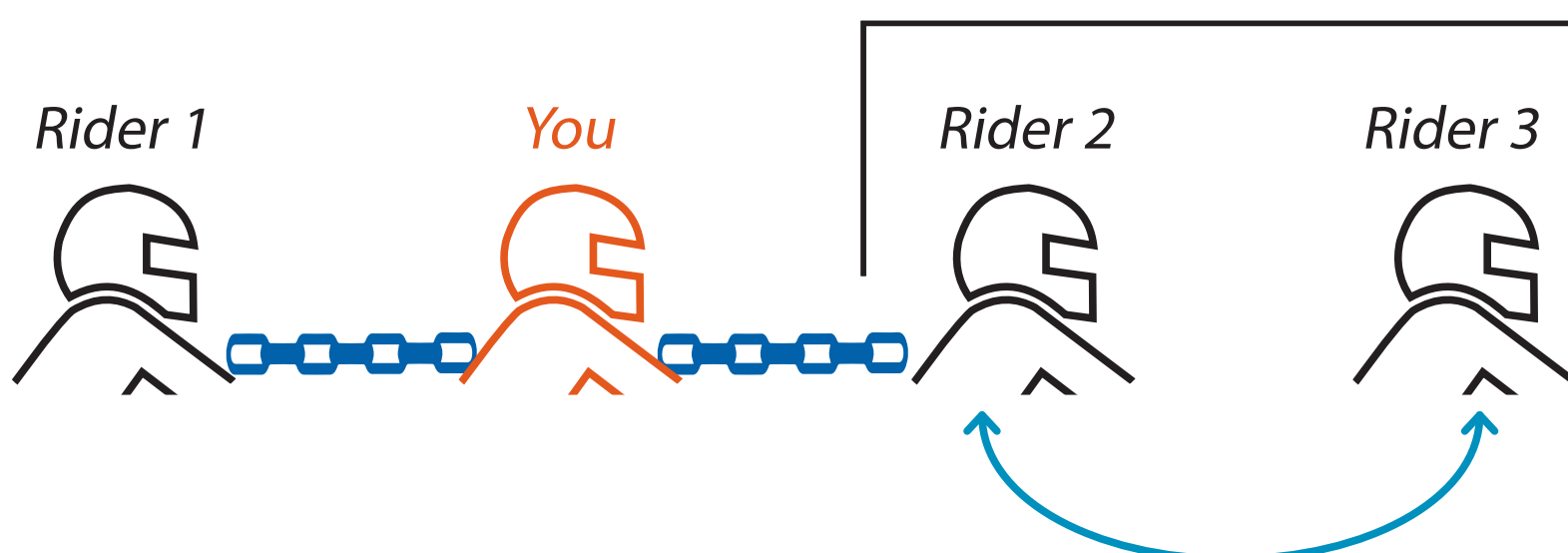


Adding
3rd rider



Adding
4th rider

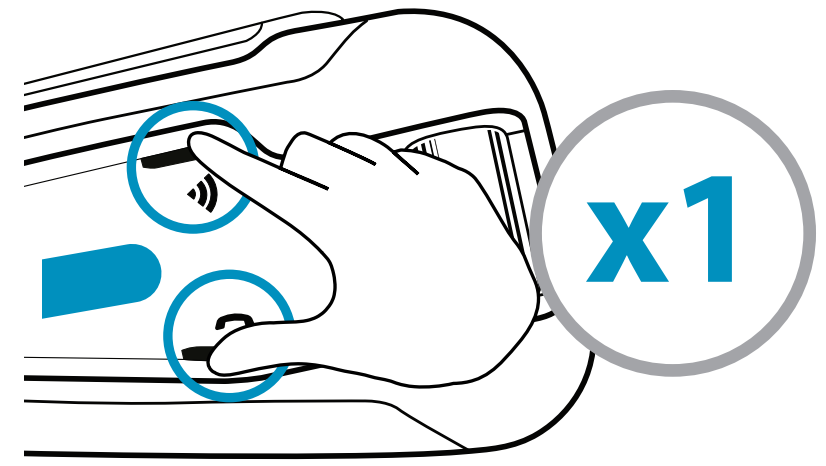
Rider 2 connects to Rider 3
on Rider 2's free channel



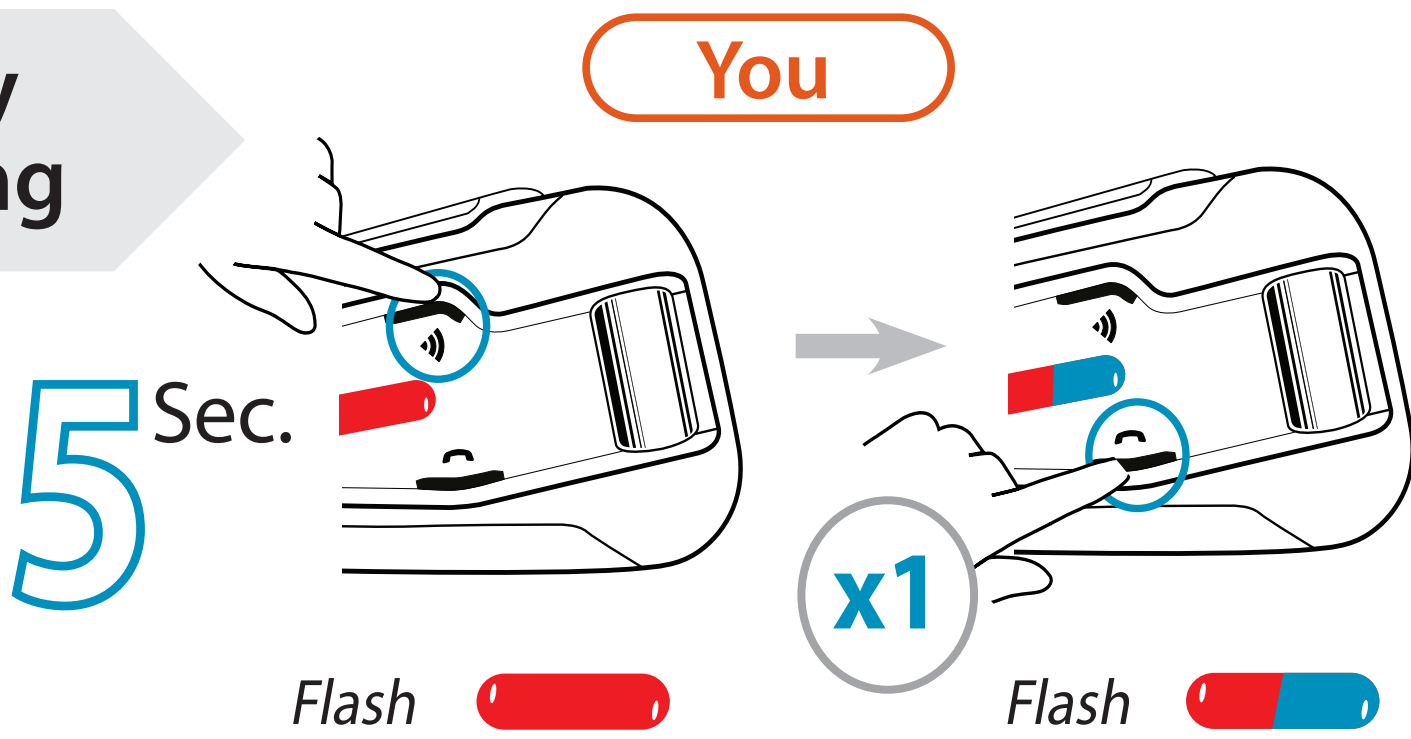
Set a universal intercom

Verify you are in  Bluetooth Mode *Flash* 

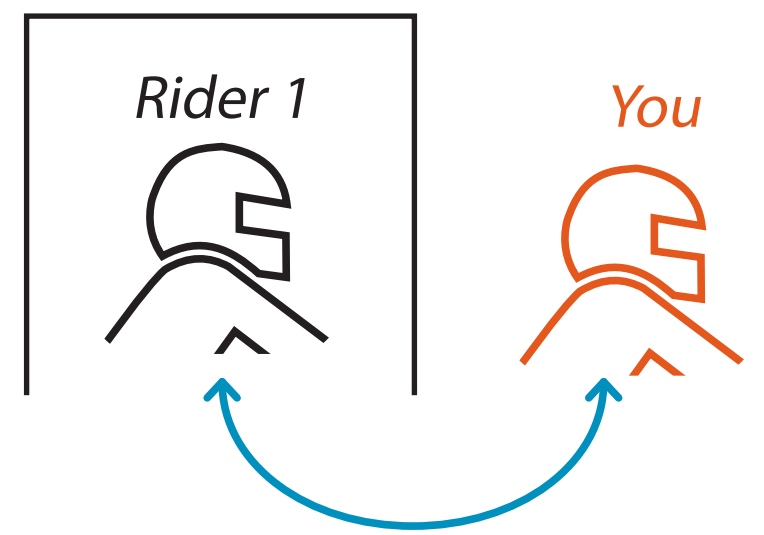
 **Bluetooth / DMC**
Change Intercom Mode



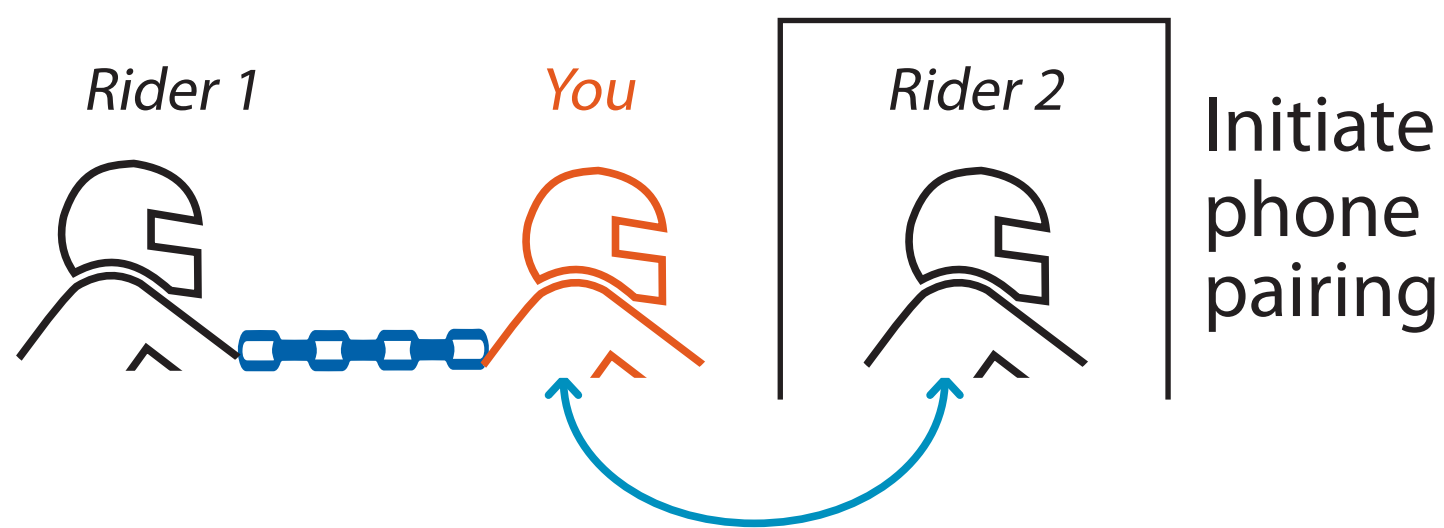
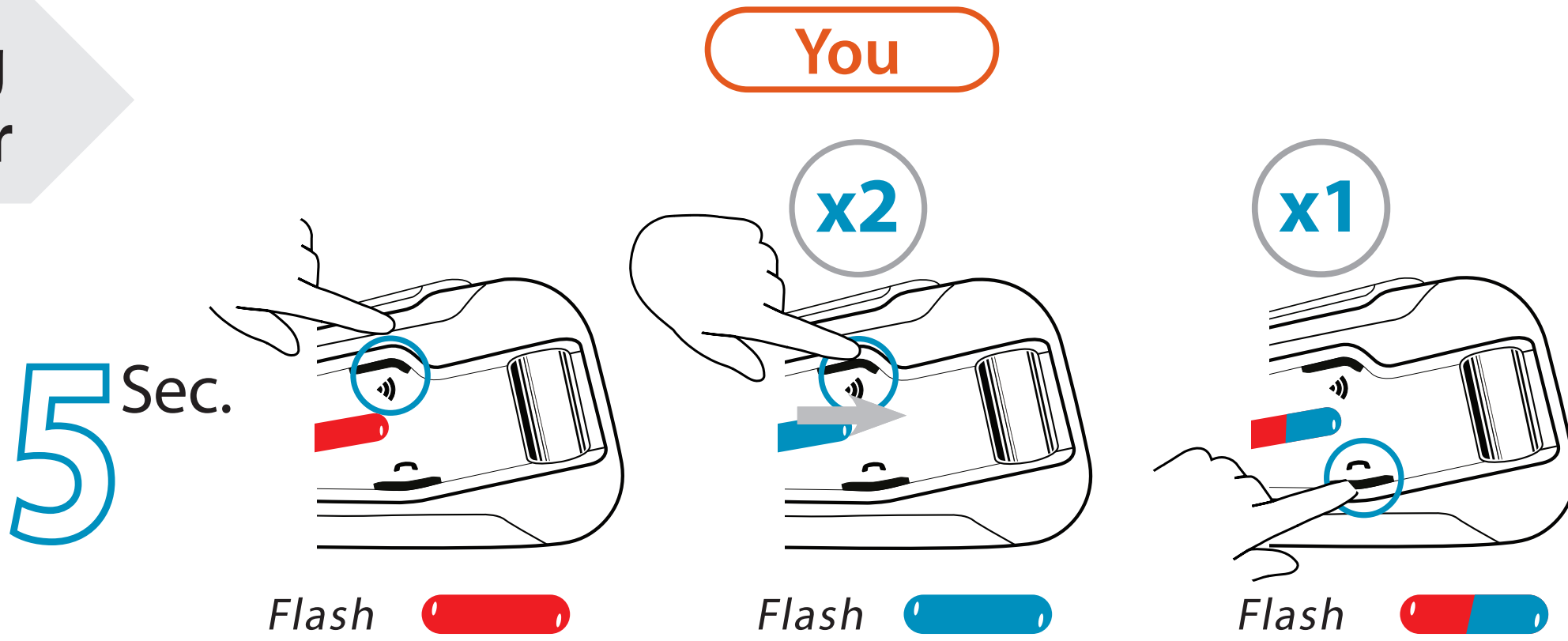
2-way pairing



Initiate phone pairing

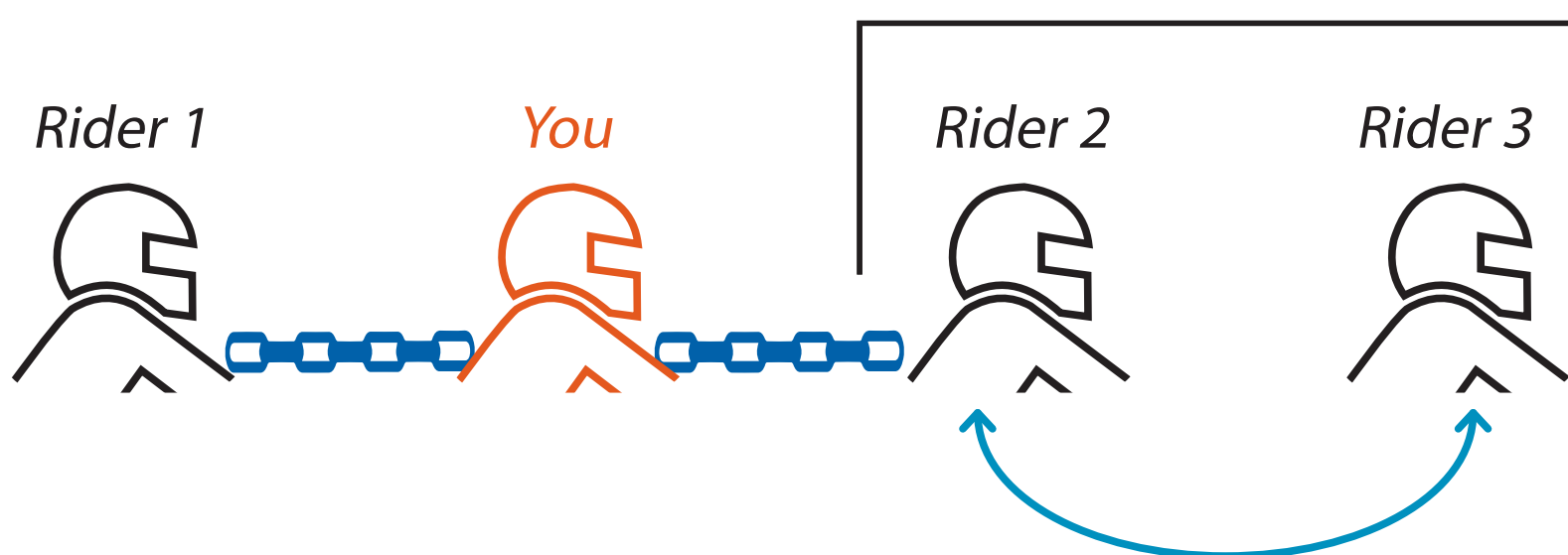


Adding 3rd rider



Adding 4th rider

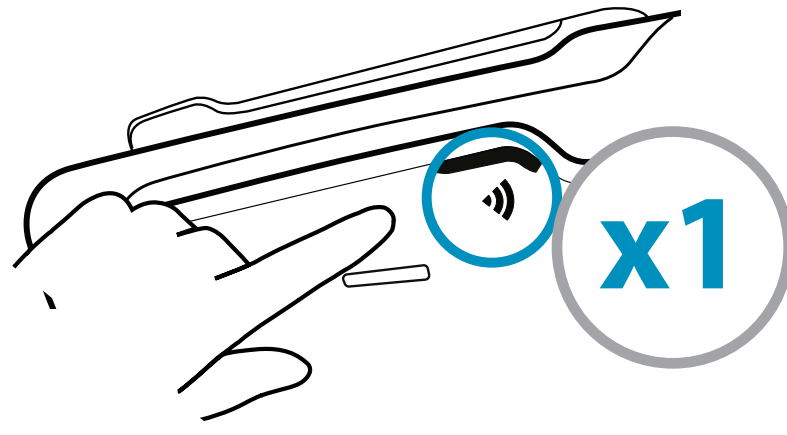
Rider 2 connects to Rider 3 on Rider 2's free channel



Intercom

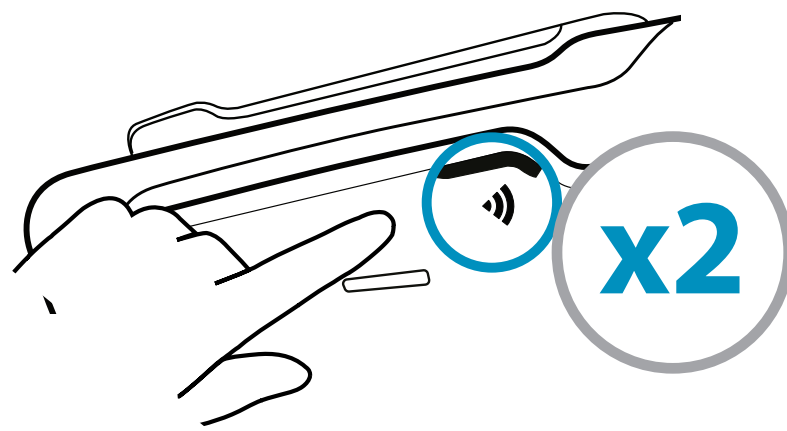
  **Start / End / Add Rider 1**

Rider 1

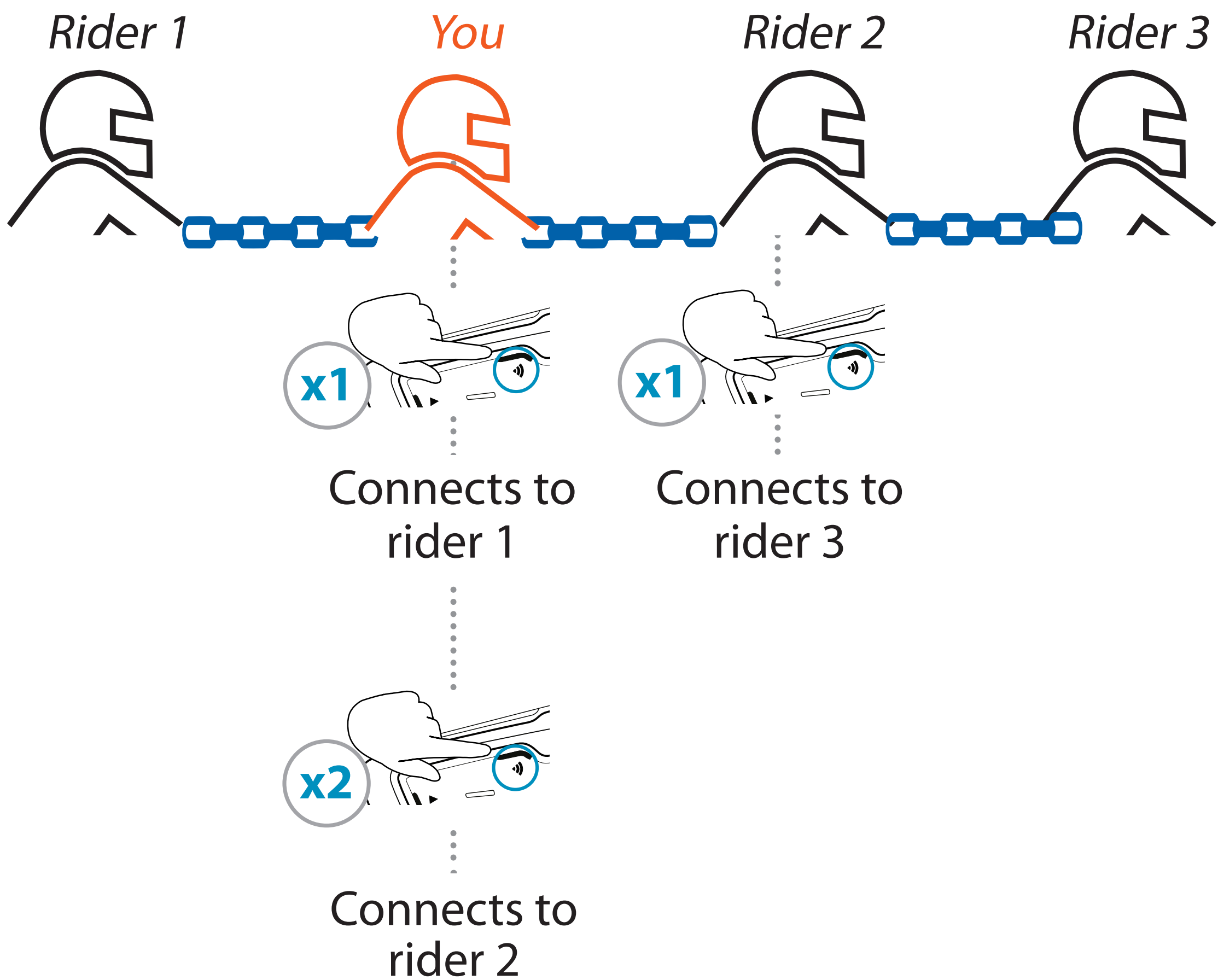


  **Start / End / Add Rider 2**

Rider 2



Initiate 4 way intercom Conference



Voice Commands Always On!



- "Hey Cardo, **radio on**"
- "Hey Cardo, **radio off**"
- "Hey Cardo, **next station**"
- "Hey Cardo, **previous station**"



- "Hey Cardo, **music on**"
- "Hey Cardo, **music off**"
- "Hey Cardo, **next track**"
- "Hey Cardo, **previous track**"



- "Hey Cardo, **volume up**"
- "Hey Cardo, **volume down**"
- "Hey Cardo, **mute audio**"
- "Hey Cardo, **unmute audio**"



- "Hey Cardo, **speed dial**"
- "Hey Cardo, **redial number**"
- **Answer**
- **Ignore**

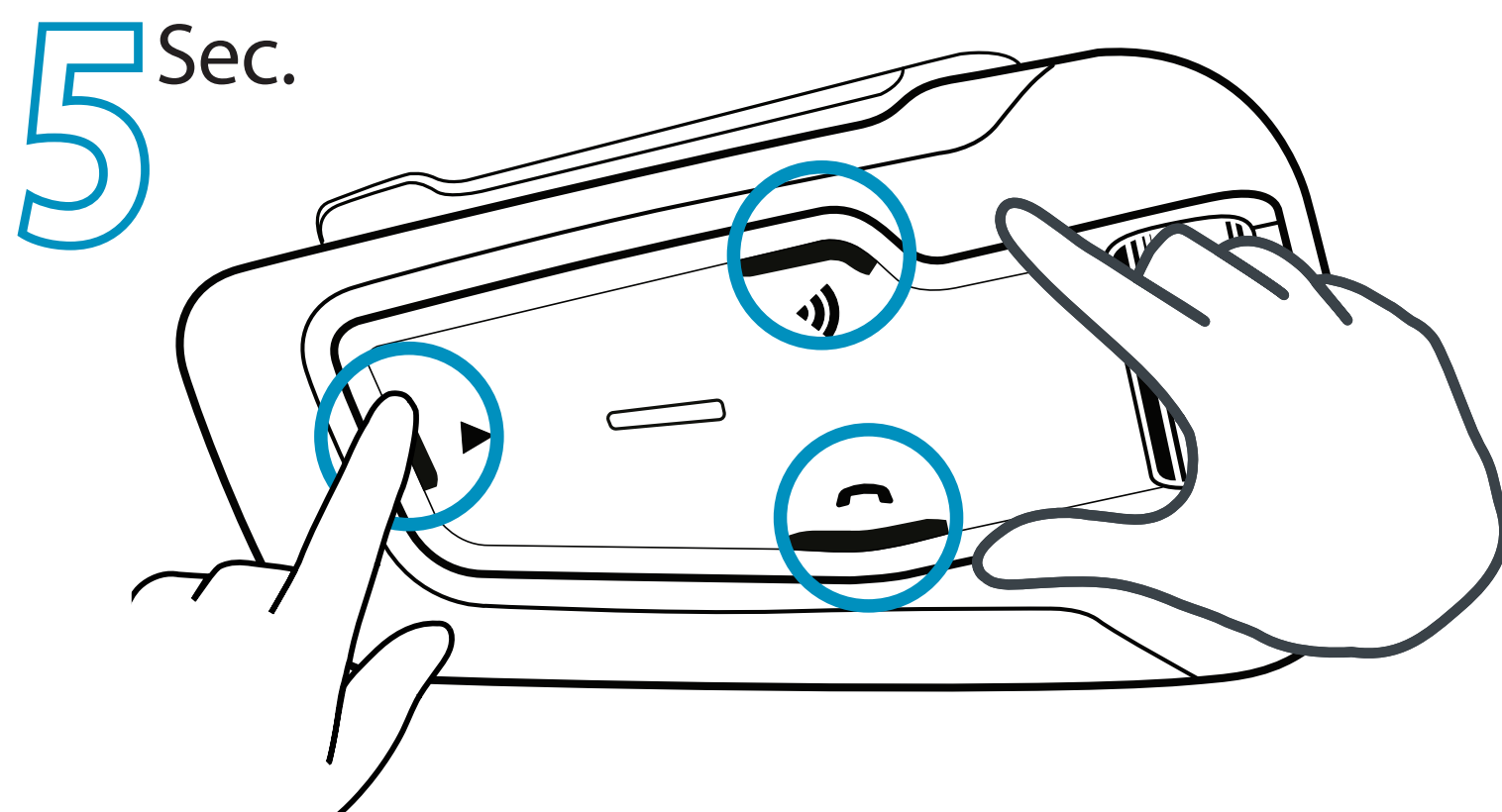


- "Hey Siri"
- "Ok Google"



- "Hey Cardo, **battery status**"
- "Hey Cardo, **call intercom**"

Factory Reset



Flash x5: 

Cardo Mobile App

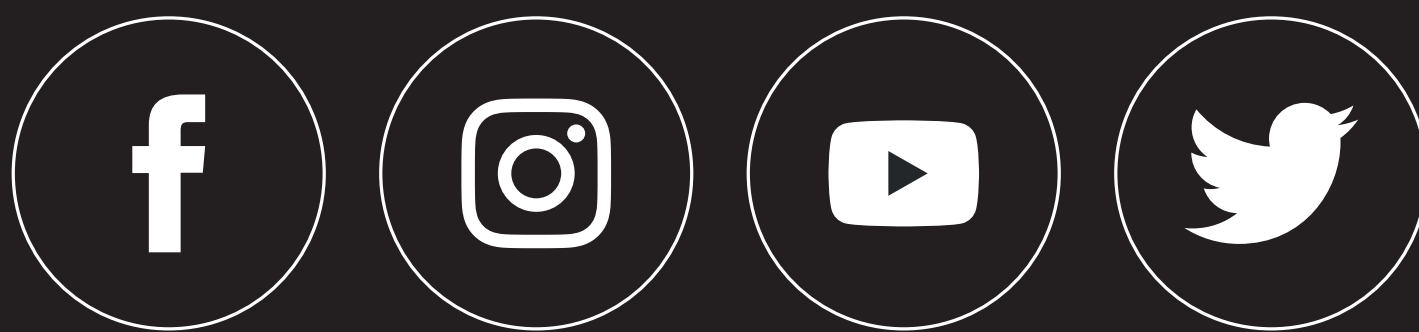
- Easy configuration
- Remote control operation
- On-the-go setting customization
- Managing DMC groups



Cardo Connect
App



Full version of the manual
cardosystems.com/support



cardosystems.com