

KENWOOD

55cm Total Frost Free Fridge
Freezer with Water Dispenser
KNFD55B17 / KNFD55W17 /
KNFD55X17

installation / instructions manual



Contents

safety warnings	4
unpacking.....	6
installation.....	7
location	7
levelling the unit.....	7
free space requirements.....	7
reversing the door swing	8
cleaning before use	11
before using your unit.....	11
product overview	12
main unit.....	12
operation	13
switching on your unit.....	13
super freeze mode	13
holiday mode	13
before using the water dispenser	14
filling the water tank.....	15
receiving water from the water dispenser.....	15
noises inside the unit!.....	16
tips for keeping food in the unit	16
preparations for freezing	16
defrosting frozen food.....	17
cleaning the interior and the exterior of the unit.....	17
cleaning the water tank and water dispenser	17
maintenance.....	18
changing the internal LED light	18
care when handling / moving your unit.....	18
servicing	18
switching off for long periods of time	18
condensation	18
disposal	18
specifications.....	19

safety warnings

For your continued safety and to reduce the risk of injury or electric shock, please follow all the safety precautions listed below.

- Read all instructions carefully before using the unit and keep them for future reference.
- Retain the manual. If you pass the unit onto a third party, make sure to include this manual.
- This appliance is intended for indoor household use and similar applications such as:
 - farm houses and by clients in hotels, motels and other residential type environment;
 - bed and breakfast type environment;
 - staff kitchen areas in shops, offices and other working environment;
 - catering and similar non-retail applications.
- Ensure that the plug is easily accessible to enable disconnection from the mains supply.
- If the mains cable is damaged, it must be replaced by the manufacturer, its service agent or a qualified technician in order to avoid a hazard.
- Choose a location for your unit away from heat sources such as radiators or fires as refrigerant and vesicant are burnable.
- The unit must be manoeuvred by a minimum of 2 persons.
- This appliance can be used by children aged from 8 years and above and persons with reduced physical, sensory or mental capabilities or lack of experience and knowledge if they have been given supervision or instruction concerning use of the appliance in a safe way and understand the hazards involved. Children shall not play with the appliance. Cleaning and user maintenance shall not be made by children without supervision.
- Children should be supervised to ensure that they do not play with the unit.
- If your unit is fitted with a lock to prevent children being trapped inside, keep the key out of reach and not in the vicinity of the unit.

- Do not store explosive substances such as aerosol cans with a flammable propellant in this appliance.
- Do not store bottles or glass containers in the freezer compartment. Contents can expand when frozen (fizzy drinks) which may break the bottle and damage your freezer compartment. (If applicable)



WARNING

- Keep ventilation openings in the unit enclosure or in the built-in structure clear of obstructions.
 - Do not use mechanical devices or other means to accelerate the defrosting process, other than those recommended by the manufacturer.
 - Do not use electrical appliances inside the food storage compartments of the unit, unless they are of the type recommended by the manufacturer.
 - Do not damage the refrigerant circuit (The refrigerant is a very environmental-friendly gas but is also combustible. Take care when transporting or moving the unit to ensure that the refrigeration circuit is not damaged. In the event of damage avoid naked flames or ignition sources and ventilate the room in which the unit is placed for a few minutes.)
-

WARNING



IT IS HAZARDOUS FOR ANYONE OTHER THAN AUTHORISED SERVICE PERSONNEL TO CARRY OUT SERVICING OF REPAIRS WHICH INVOLVE THE REMOVAL OF COVERS.



TO AVOID THE RISK OF AN ELECTRICAL SHOCK DO NOT ATTEMPT REPAIRS YOURSELF.

Thank you

for purchasing your new Kenwood Fridge Freezer.

These operating instructions will help you use it properly and safely.

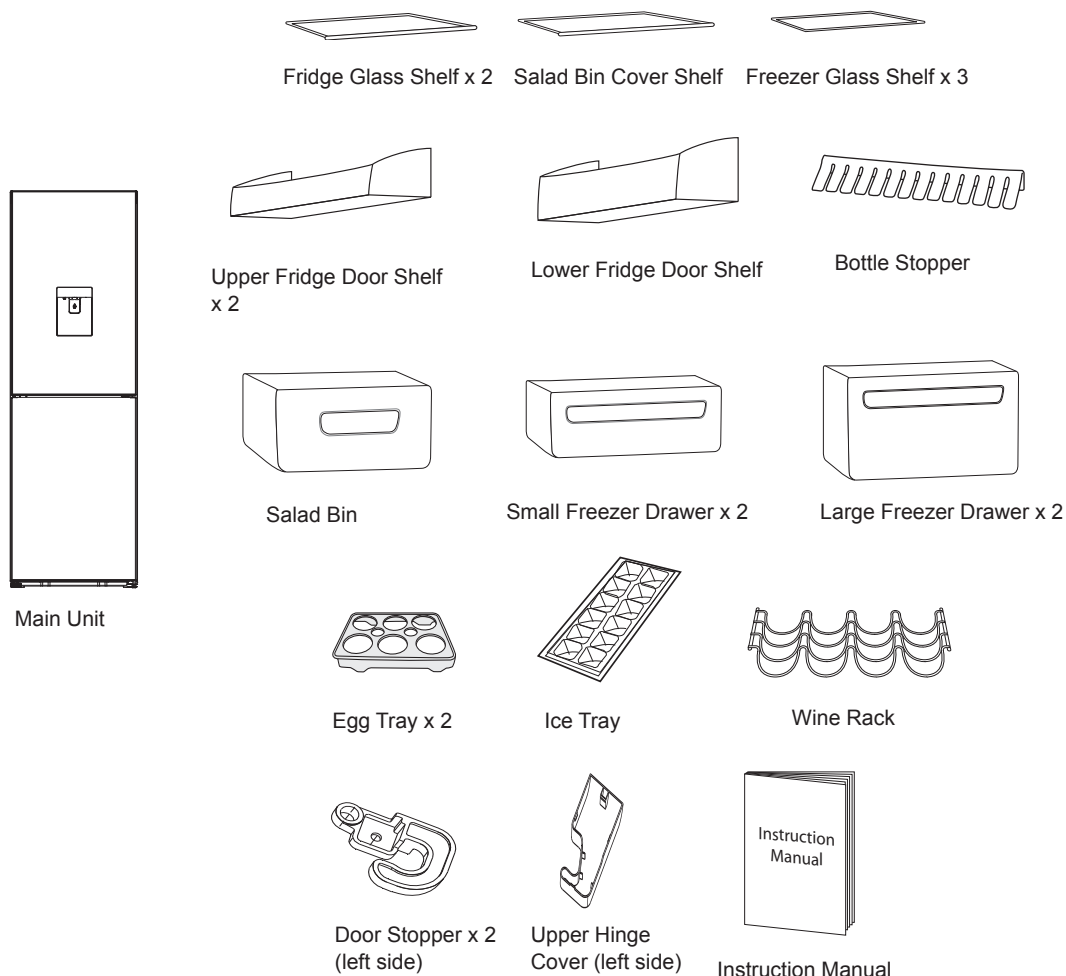
We recommend that you spend some time reading this installation/instruction manual in order that you fully understand all the operational features it offers.

Read all the safety instructions carefully before use and keep this installation/instruction manual for future reference.

unpacking

Remove all items from the packaging. Retain the packaging. If you dispose of it please do so according to local regulations.

The following items are included:



If items are missing or damaged please contact Partmaster (UK only).
Tel: 0344 800 3456 for assistance.

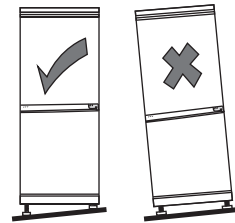
installation

location

When selecting a position for your unit you should make sure the floor is flat and firm, and the room is well ventilated with an average room temperature of between 10°C and 43°C. Avoid locating your unit near a heat source, e.g. cooker, boiler or radiator. Also avoid direct sunlight as it may increase the electrical consumption. Extreme cold ambient temperatures may also cause the unit not to perform properly. This unit is not designed for use in a garage or outdoor installation. Do not drape the unit with any covering.

levelling the unit

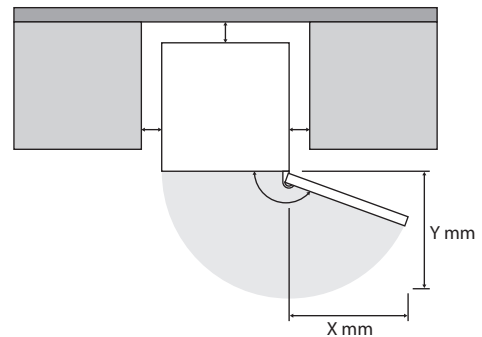
To do this adjust the two levelling feet at the front of the unit.
If the unit is not level, the doors and magnetic seal alignments will not be covered properly.



free space requirements

When installing the unit, ensure that 25 mm of free space is left at both sides, 50 mm at the rear of the unit and 25 mm at the top of the unit. The door can be opened to the right or the left, depending on which best suits the location.

Please ensure there is more than twice the width and depth distance space of the unit to fully open the door to a maximum angle of 130°.



reversing the door swing

tools required: Philips style screwdriver / Flat bladed screwdriver / Hexagonal spanner

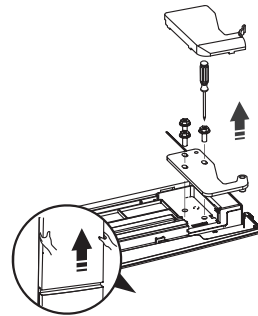


- Ensure the unit is unplugged and empty.
- To take the door off it is necessary to tilt the unit backwards. You should rest the unit on something solid, e.g. a chair just below the top panel.
- All parts removed must be saved to do the reinstallation of the door.
- Do not lay the unit flat as this may damage the coolant system.
- We recommend that 2 people handle the unit during assembly.
- If you want to have the door swing reversed, we recommend that you contact a qualified technician. You should only try to reverse the door yourself if you believe that you are qualified to do so.

1. Remove the water tank and door shelves. Remove the upper hinge cover, screws and upper hinge. Lift the upper door and place it on a padded surface to prevent from being scratched. Remove the screw hole cover from the opposite side and move to cover the hole here.



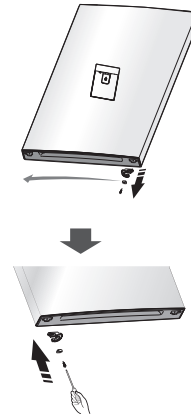
Upper hinge cover has left and right side. The upper hinge cover packed as an accessory is for the left side.



2. Remove the screw and stop block from the bottom of the upper door and move it to the opposite side. Remove also the door stopper and keep it for future use. For the opposite side, use the door stopper for left side. Screw tightly.

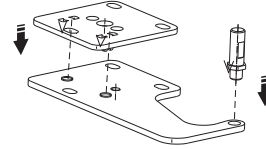
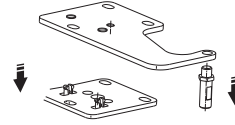


Door stopper has left and right side. The door stopper packed as an accessory is for the left side.

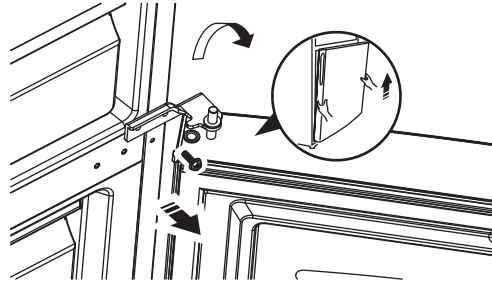


installation

3. Loosen the hinge pin, reverse it and put it back to the hole, tighten into position. Take down the gasket and change its position.



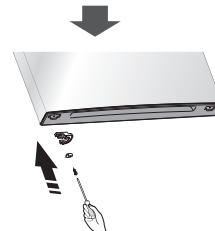
4. Remove the middle hinge. Lift the lower door and place it on a padded surface to prevent from being scratched.



5. Remove the screw and stop block from the bottom of the lower door and move it to the opposite side. Remove also the door stopper and keep it for future use. For the opposite side, use the door stopper for left side. Screw tightly.

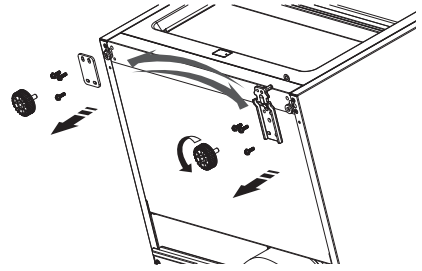


Door stopper has left and right side.
The door stopper packed as an
accessory is for the left side.

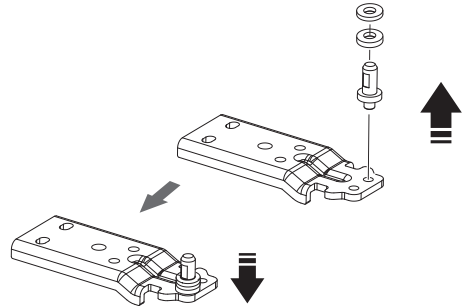


installation

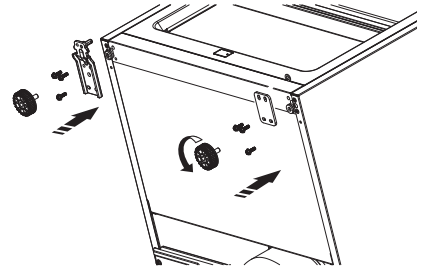
6. Lay down the unit. Remove both levelling feet, levelling feet fix board and bottom hinge. Swap the position of the levelling feet fix board with the bottom hinge. Swap the position of the levelling feet with the bottom hinge.



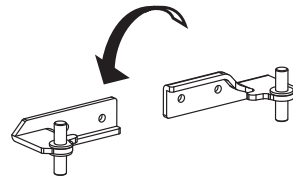
7. On the bottom hinge, move the position of the bottom hinge pin to the other hole. Tighten the pin securely.



8. Screw the levelling feet fix board, bottom hinge and levelling feet tightly on their new position.



9. Stand the unit. Remove the middle hinge hole covers and swap their position with the middle hinge. Reverse the middle hinge.

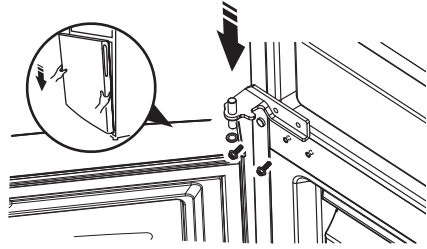


installation

10. Place the bottom hole of the lower door onto the bottom hinge pin. Insert the middle hinge pin into the upper hole of the lower door. Tighten the pin securely. Screw the middle hinge tightly. Cover the remaining holes with the hole covers.



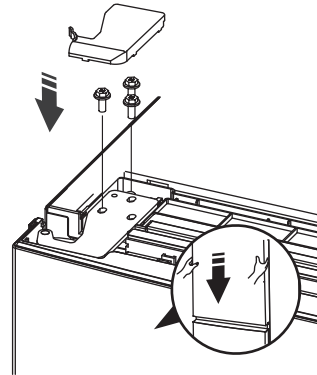
- Ensure the lower door is aligned horizontally and vertically, so that the seals are closed on all sides before finally tightening the pin.



11. Place the bottom hole of the upper door onto the middle hinge pin. Reverse the upper hinge. Insert the upper hinge pin into the upper hole of the upper door. Tighten the pin securely. Screw the upper hinge tightly. Cover the upper hinge with the upper hinge cover for left side.



- Ensure the upper door is aligned horizontally and vertically, so that the seals are closed on all sides before finally tightening the pin.



cleaning before use

Wipe the inside of the unit with a weak solution of bicarbonate soda. Then rinse with warm water using a sponge or cloth. Wipe completely dry before replacing the drawers. Clean the exterior of the unit with a damp cloth.

If you require more information refer to the **Cleaning** section.



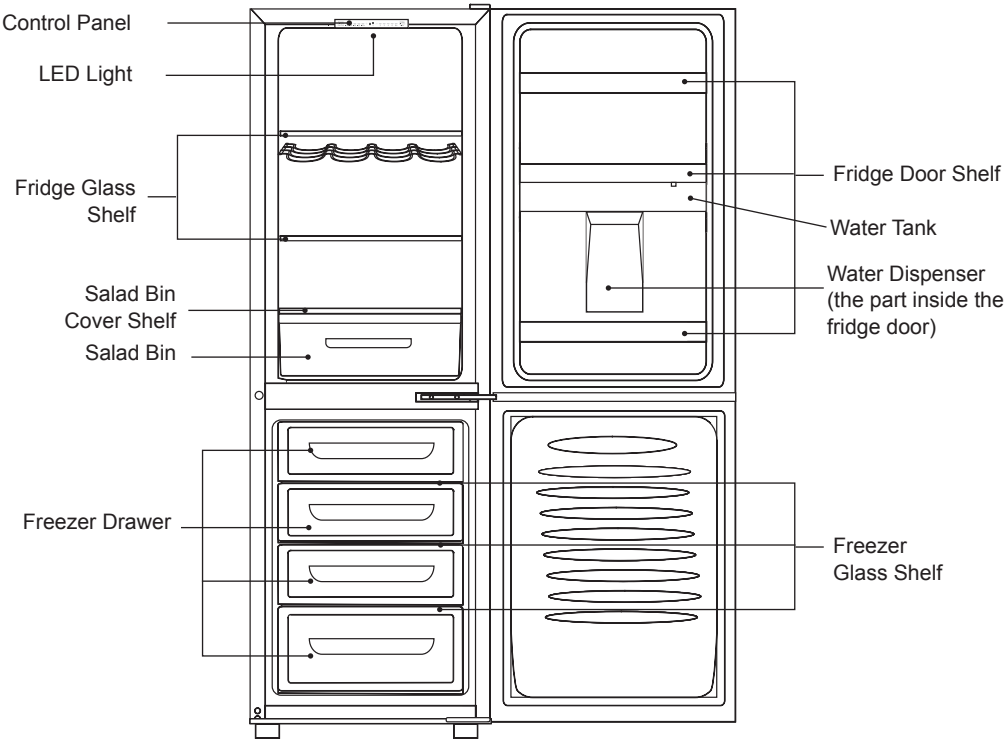
- **Before Plugging in YOU MUST**
Check that you have a socket which is compatible with the plug supplied with the unit.
- **Before Turning On!**
Do not turn on until two hours after moving the unit. The coolant fluid needs time to settle.

before using your unit

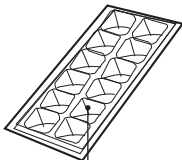
Before placing any food in your unit, turn it on and wait for 24 hours, to make sure it is working properly and to allow it time to fall to the correct temperature. Your unit should not be overfilled.

product overview

main unit



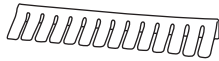
Egg Tray



Ice Tray



Wine Rack

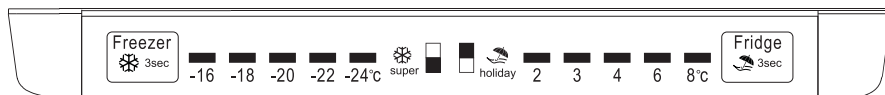


Bottle Stopper (recommend to hang on the lower fridge door shelf)

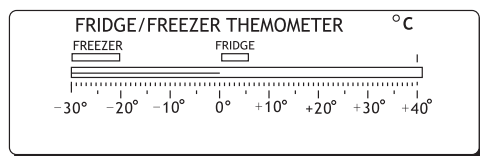
operation

switching on your unit

1. Connect the mains cable to the mains socket. The internal temperature of your unit is controlled by an electronic control panel.
2. Press Fridge button repeatedly to set temperature for the fridge compartment (2 to 8°C) and press Freezer button repeatedly to set temperature for the freezer compartment (-16 to -24°C).



3. The unit may not operate at the correct temperature if it is in a particularly hot or a particularly cold room, or if you open the doors often.
4. To ensure that the unit is cool enough to sufficiently chill your food, wait 24 hours before filling it with food.
5. If you are concerned that your unit is not being kept cold enough and wish to check the temperature, you will need a special fridge/freezer thermometer. These are available from most supermarkets and hardware shops. Place the thermometer in either the fridge or freezer compartment and leave overnight. The correct temperature for the fridge compartment should be at the recommended 0-8°C. The correct temperature for the freezer compartment should be -18°C or lower.



super freeze mode

- Press and hold Freezer button for 3 seconds to activate the super freeze mode. ❄️ will light up. Temperature in the freezer compartment will be quickly lowered.
- To switch off, press and hold Freezer button for 3 seconds, and the freezer temperature will resume to the previous setting. Otherwise, super freeze mode will also automatically deactivate after 26 hours, and the freezer temperature will resume to the previous setting. ❄️ light will extinguish.

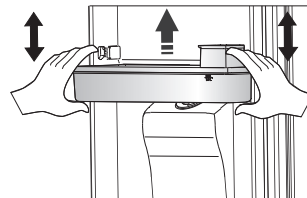
holiday mode

- If you will be away for a period of time, you can set the fridge to holiday mode. Press and hold Fridge button for 3 seconds to activate the holiday mode. ☂️ will light up. Temperature in the fridge will automatically set to 15°C. Do not store any food in the fridge during holiday mode.
- To switch off, press and hold Fridge button for 3 seconds, and the fridge temperature will resume to the previous setting. ☂️ light will extinguish.

before using the water dispenser

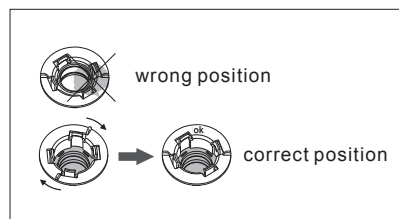
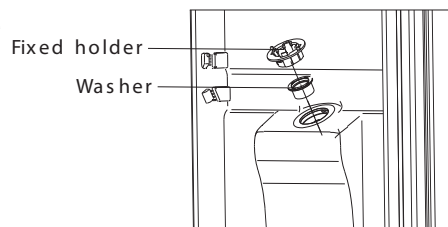
Before using the water dispenser, clean the water tank first.

1. Take out the middle door shelf.
2. Take out the water tank by gripping it tightly on both sides, then keep pulling it upward and downward with some force until removed.
3. Take off the water tank cover, and wash the water tank, valve and its cover. After washing, drain the water from inside the tank and replace the cover.
4. Before installing, check and ensure the washer inside the dispenser hole is positioned properly.



Make sure the washer inside the dispenser hole is in proper position before installing the water tank. This is because the washer may turn inside out or loosen when removing the water tank.

If the washer is not positioned properly, take off the fixed holder then adjust the washer to the correct position. Replace the fixed holder.

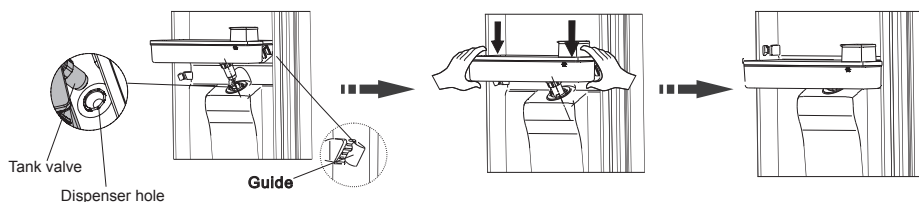


5. Insert the water tank valve into the water dispenser hole first.



Be careful not to press on the tank valve.

6. Fit the water tank along the guides on the door. Press down on both sides of the water tank.
7. When a click is heard, that means the installation is completed.



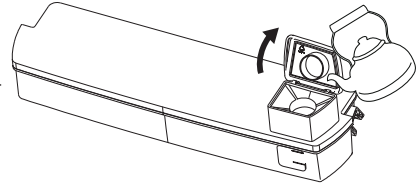
8. Replace the middle door shelf on top of the water tank.

filling the water tank

Open the small tank cover. Fill drinking water into the water tank through the hole. Close the cover after filling.



- Do not fill above the level, otherwise, it may overflow.
- Before filling with water, ensure that the water tank is steady and in a correct position.
- Apart from drinking water, other beverages (such as milk, juice, carbonated beverage, etc) are not suggested to be used, especially beverages that include grain must not be used (may result in blockage and damage).
- Hot water must not be filled into the water tank directly.
- Do not touch other parts of the unit when filling water, it may lead to leakage.



receiving water from the water dispenser

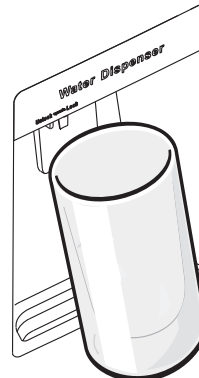
- Before you dispense the water, make sure the lock device is at "Unlock" position.



- Ensure to slide to "Lock" position after each use to prevent children from playing with the lever.
- When at "Lock" position, do not push on the lever with force. It will damage the mechanism.



- You should use the type of container that can fit under the water dispenser. Place the container properly underneath and push on the lever for water to flow.



noises inside the unit!

You may notice that your unit makes some unusual noises. Most of these are perfectly normal, but you should be aware of them!

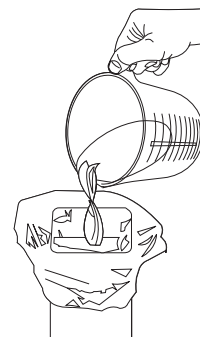
These noises are caused by the circulation of the refrigerant liquid in the cooling system. It has become more pronounced since the introduction of CFC free gases. This is not a fault and will not affect the performance of your unit. This is the compressor motor working, as it pumps the refrigerant around the system.

tips for keeping food in the unit

- Cooked meats/fishes should always be stored on a shelf above raw meats/fishes to avoid bacterial transfer. Keep raw meats/fishes in a container which is large enough to collect juices and cover it properly. Place the container on the lowest shelf.
- Leave space around your food, to allow air to circulate inside the compartments. Ensure all parts of the unit are kept cool.
- To prevent transfer of flavours and drying out, pack or cover the food separately. Fruit and vegetables do not need to be wrapped.
- Always let pre-cooked food cool down before you put in the unit. This will help to maintain the internal temperature of the unit.
- To prevent cold air escaping from the unit, try to limit the number of times you open the doors. We recommend that you only open the doors when you need to put food in or take food out.

preparations for freezing

- Use quality food and handle it as little as possible. Freeze food in small quantities as it freezes faster, takes less time to defrost and enables you to control the quantity you need better.
- Leave cooked food to cool completely. Chill food before freezing if possible.
- Consider how you will want to cook the food before freezing it.
- Don't freeze food in metal containers if you may want to microwave it straight from the freezer.
- Use special freezer bags, freezer film, polythene bags, plastic containers, and aluminium foil (heavy duty grade only). If in doubt, double wrap your food. Don't use aluminium foil for acidic foods, e.g. citrus fruits. Don't use thin cling film, glass, or used food containers without cleaning.
- Exclude as much air from the container as possible. You could buy a special vacuum pump which sucks excessive air out of the packaging.
- Leave a small amount of air space when freezing liquids to allow expansion.
- You can use the space in the freezer most efficiently if you freeze liquids (or solids with liquids, e.g. stew) in square blocks. This is known as "Preforming". Pour the liquid into a polythene bag which is inside a square sided container. Freeze it, and then remove it from the container and seal the bag.
- Label your frozen foods as they will look the same when in frozen state. Use special freezer tapes, labels and pens with different colours. This allows you to easily organise and to effectively use the freezer. Write the contents and date; otherwise the frozen food might exceed the storage time and this could cause food poisoning. Please refer to your food packaging for the recommended storage time.
- You may also add the weight and cooking notes, e.g. "defrost first", "cook from frozen" and keep a separate log of what is in each drawer. This will save opening the door and searching around unnecessarily.



defrosting frozen food

1. Take the frozen food out from the freezer compartment and uncover the frozen food. Let it defrost at room temperature. Don't forget that defrosting in a warm area encourages the growth of bacteria and low temperature cooking may not destroy dangerous bacteria.
2. Drain off and throw away any liquid lost during defrosting.
3. Always make sure there are no ice-crystals in the food before cooking, particularly with meat. These crystals indicate that the food has not fully defrosted.
4. Cook food as soon as possible after defrosting.
5. Many microwaves and ovens have a defrost setting. To avoid bacterial build up, only use these if you intend to cook the food immediately afterwards.



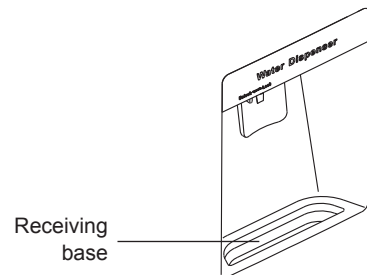
Never re-freeze anything that has been defrosted unless you cook it again, to kill off harmful bacteria. Never re-freeze defrosted shellfish. Re-seal packs properly after removing items. This prevents drying or freezer-burn and a build up of frost on any remaining food.

cleaning the interior and the exterior of the unit

- Remove all the shelves and drawers.
- Wipe the inside of the unit with a weak solution of bicarbonate soda and then rinse with warm water using a sponge or cloth. Wipe completely dry before replacing the shelves, drawers and salad bin.
- Use a damp cloth to clean the exterior, and then wipe with a standard furniture polish. Make sure that the doors are closed to avoid the polish getting on the magnetic door seals or inside the unit.
- The grille of the condenser at the back of the unit and the adjacent components can be vacuumed using a soft brush attachment.

cleaning the water tank and water dispenser

- Remove the water tank. Wash the tank, tank cover and valve lightly under water.
- After cleaning, dry them thoroughly before installing back in the fridge.
- Wipe the receiving base of the water dispenser with dry towel regularly to avoid overflowing.



maintenance

changing the internal LED light

The internal light is an LED panel that cannot be changed by the user. Please contact a qualified service agent.

care when handling / moving your unit

Hold the unit around its sides or base when moving it. Under no circumstances should it be lifted by holding the edges of the top surface.

servicing

The unit should be serviced by an authorised engineer and only genuine spare parts should be used. Under no circumstances should you attempt to repair the unit yourself. Repairs carried out by inexperienced persons may cause injury or serious malfunction. Contact a qualified technician.

switching off for long periods of time

When the unit is not in use for a long period of time, disconnect it from the mains supply, empty all food and clean the appliance, leaving the door ajar to prevent unpleasant smells.

condensation

Condensation may appear on the outside of the unit. This may be due to a change in room temperature. Wipe off any moisture residue. If the problem continues, please contact a qualified technician for assistance.

disposal

Old units still have some residual value. An environmentally friendly method of disposal will ensure that valuable raw materials can be recovered and used again. The refrigerant used in your unit and insulation materials require special disposal procedures. Ensure that none of the pipes on the back of the unit are damaged prior to disposal.

Up to date information concerning options of disposing of your old unit and packaging from the new one can be obtained from your local council office.

When disposing of an old unit break off any old locks or latches and remove the door as a safeguard.

specifications

Model	KNFD55B17 / KNFD55W17 / KNFD55X17
Appliance Category	Category 7 (Refrigerator – Freezer)
Overall Dimension (H x W x D)	1788 x 550 x 605 mm
Fresh Food Storage Volume	156 L
Frozen Food Storage Volume	90 L
Defrosting Type	Total frost free
Climate Class	SN, N, ST, T
This appliance is intended to be used at an ambient temperature between 10°C and 43°C.	
Storage Temperature	Freezer: $\leq -18^{\circ}\text{C}$ Fridge: $0-8^{\circ}\text{C}$, average $\leq 4^{\circ}\text{C}$
Energy Consumption	0.764 kWh / 24 hours
Energy consumption 279 kWh per year , based on standard test results for 24 hours. Actual energy consumption will depend on how the appliance is used and where it is located.	
Airborne Acoustical Noise	41 dB
Energy Grading	A+
Temperature Rise	13 hours
Freezing Capacity	12 kg / 24 hours
Rated Voltage	220-240 V~
Rated Current	0.6 A

Features and specifications are subject to change without prior notice.

Need Help with your product?

Your product is supported by Knowhow

under a Trademark Licence from Fisher & Paykel Appliances Italy SpA.

For help or spare parts please call us on:

0344 561 1234



The symbol on the product or its packaging indicates that this product must not be disposed of with your other household waste. Instead, it is your responsibility to dispose of your waste equipment by handing it over to a designated collection point for the recycling of waste electrical and electronic equipment. The separate collection and recycling of your waste equipment at the time of disposal will help conserve natural resources and ensure that it is recycled in a manner that protects human health and the environment.

For more information about where you can drop off your waste for recycling, please contact your local authority, or where you purchased your product.

DSG Retail Ltd. (co. no. 504877)
1 Portal Way, London, W3 6RS, UK

Manufactured for DSG Retail Limited under Licence from Fisher & Paykel Appliances Italy SpA.
DSG Retail Limited is responsible for after sales service.