



RENLICON
OUTFITTING YOUR ADVENTURES

OUT-IN-ABOUT BOX™ 2.0 *Wheel Kit*

Part: 000-RN-17319
Manual Number -953



Welcome to Your New Out-in-About Box™ 2.0 Wheel Kit!

Thanks for purchasing the Wheel Kit for your new Out-In-About Box™ 2.0!

With wheels built to withstand rugged conditions, you can now move your Out-In-About Box™ 2.0 around your home or camp site with ease, even when fully stocked!

This instruction sheet provides the necessary information for the assembly of the Renlicon Out-In-About Box™ 2.0 Wheel Kit. If you need any additional information or any help along the way, please contact our Customer Service team at (530) 893-5244.

WHAT YOU'LL NEED

Before you begin assembling your Out-In-About Box™ 2.0 Wheel Kit, please take a moment to review the assembly instructions carefully and verify that all parts are included in your kit. If you have any questions or discover any missing or damaged components, please contact our Renlicon Team at (530) 893-5244—we're here to help!

TOOLS (not included)

- 1/8" Hex Key
- 3/8" Wrench
- Mallet/Hammer

NOTICE: *This product is protected by state common law, copyright and/or patent. All legal rights therein are reserved. The design, layout, dimensions, geometry, and engineering features shown in this product are the exclusive property of Renlicon. This product may not be copied or duplicated in whole or part, abstractly or fundamentally, intentionally, or fortuitously, nor shall any design, dimension, or other information be incorporated into any product or apparatus without prior written consent of Renlicon.*

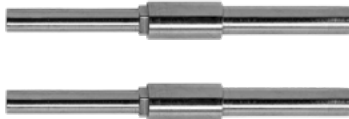
PARTS LIST

- A. Wheels (2)
- B. Axles (2)
- C. Axle Brackets (2)
- D. Hardware Kit

A



B



C

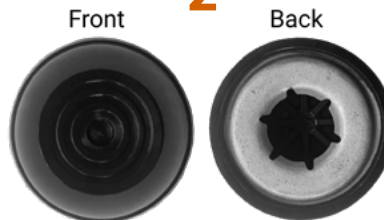


D

1



2



3



4



ITEM	DESCRIPTION	QTY
1	Thumb Screws	2
2	Axle Caps	2
3	Nuts	8
4	Bolts	8

ASSEMBLY

Attaching the Wheel to the Axle

1. Place one of the Axle Caps [Item 2] on the ground with the back facing up. Align one of the Wheels [A] with the hole over the Axle Cap [Item 2]. Insert the square side of one Axle [B] through the Wheel [A]. Tap the end of the round end of the Axle [B] with a Hammer or Mallet to secure it in place. Repeat again for the other Wheel [A] and Axle [B].

INSERT THIS END
THROUGH THE
WHEEL (A) AND INTO
THE AXLE CAP (B)



Attach Wheel Kit to the Out-In-About Box™ 2.0

2. Determine how you want to orient your Out-In-About Box™ 2.0
 - a. If you choose to go with the Tailgate Style (See Diagram A), start by placing the Out-In-About Box™ 2.0 on its side.

If you want the wheels on the left side of the box, you'll tip the box on the right side with the lid facing the to the right. If you want the wheels on the right side of the box, you'll tip the box on the left side with the lid facing the left..

Note: In Tailgate Style, one wheel will have to be removed to open the lid of the box.

- b. If you choose to go with the Camp Chest Style (See Diagram B), start by placing the Out-In-About Box™ 2.0 on its side with the lid facing away from you, no matter which side you want the wheels on.

DIAGRAM A

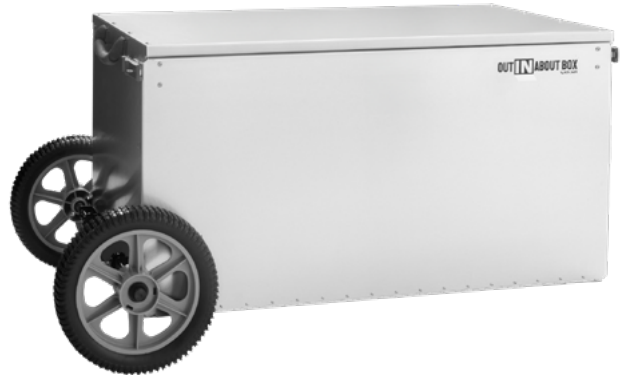
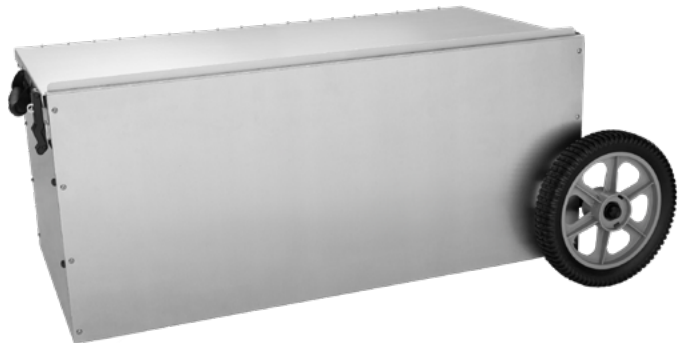


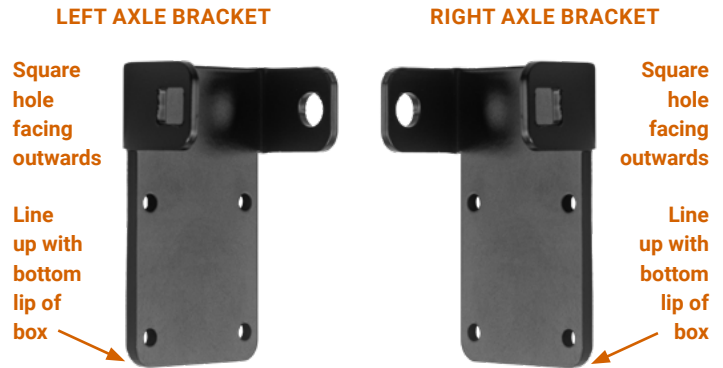
DIAGRAM B



Attaching Axle Brackets to Out-In-About Box™ 2.0

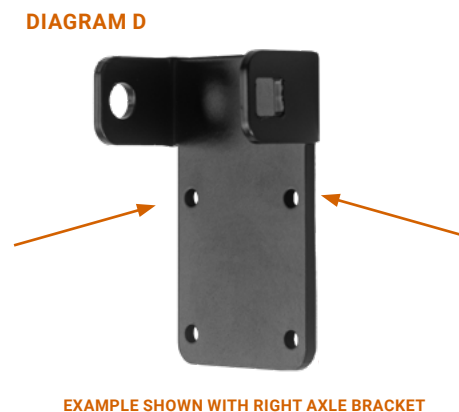
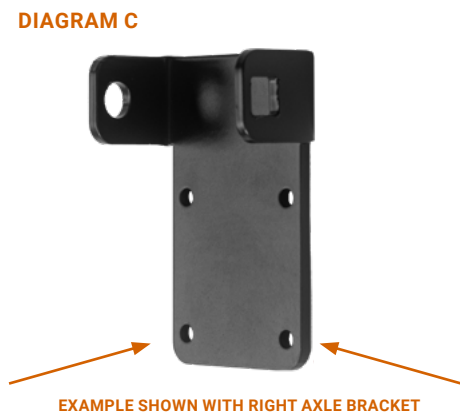
Before securing the brackets, identify the Right and Left Axle Brackets [C]. Each bracket should be positioned on the bottom corners of the box. The square hole facing outward to accommodate the Wheel [A] and Axle [B]. See photo for positioning example.

Important: The necessary holes for the axles may have plugs in them—remove these before attaching the Axle Brackets.



Attach Axle Brackets

- Line up the Right Axle Bracket [C] on the bottom right corner of the box, ensuring the square hole faces outward. Using your 1/8" Hex Key, and your 3/8" Wrench, secure the Axle Bracket [C] by inserting 2 Bolts [Item 4] and 2 Nuts [Item 3] into the bottom two holes, through the bottom lip of the box. Repeat for the Left Axle Bracket [C]. (Diagram C)
- Now that you have the bottom of both Axle Brackets [C] attached to the lip of the box, open the lid to finish screwing in the top of the Axle Brackets [C] on either side. Using your 1/8" Hex Key, and your 3/8" Wrench, secure the top of the Axle Bracket [C] by inserting 2 Bolts [Item 4] and 2 Nuts [Item 3] into the top two holes. (Diagram D)
- Insert the round end of the Axles [B] through the Axle Brackets [C], starting at the square side of the Axle Bracket [C]. The Axle Caps [Item 2] should be visible from the outside of the box. Secure the Axle [B] and Axle Bracket [C] together with a Thumb Screw [Item 1].
- Repeat step 5 on other side.



Congratulations! Your Out-In-About Box™ 2.0 is now now fully equipped with wheels making it easy to move anywhere!



Questions or Concerns?

If you need any assistance during setup or operation, don't hesitate to contact us at (530) 893-5244.

We're here to help!