



**ACQUA
DI
PARMA**

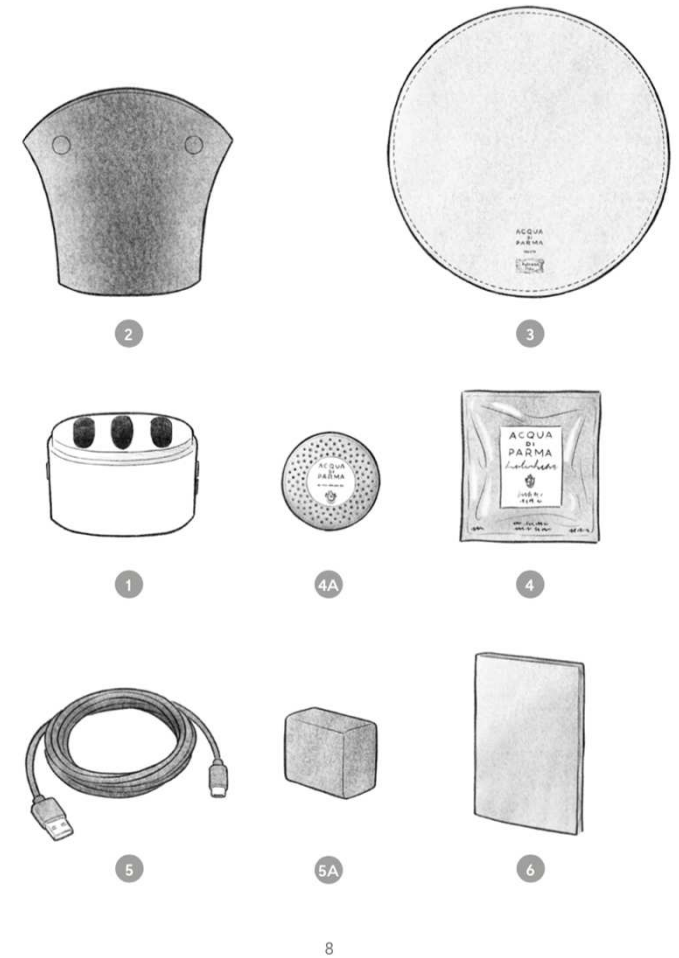
SMART HOME
DIFFUSER 2020

HATBOX CONTENT OVERVIEW

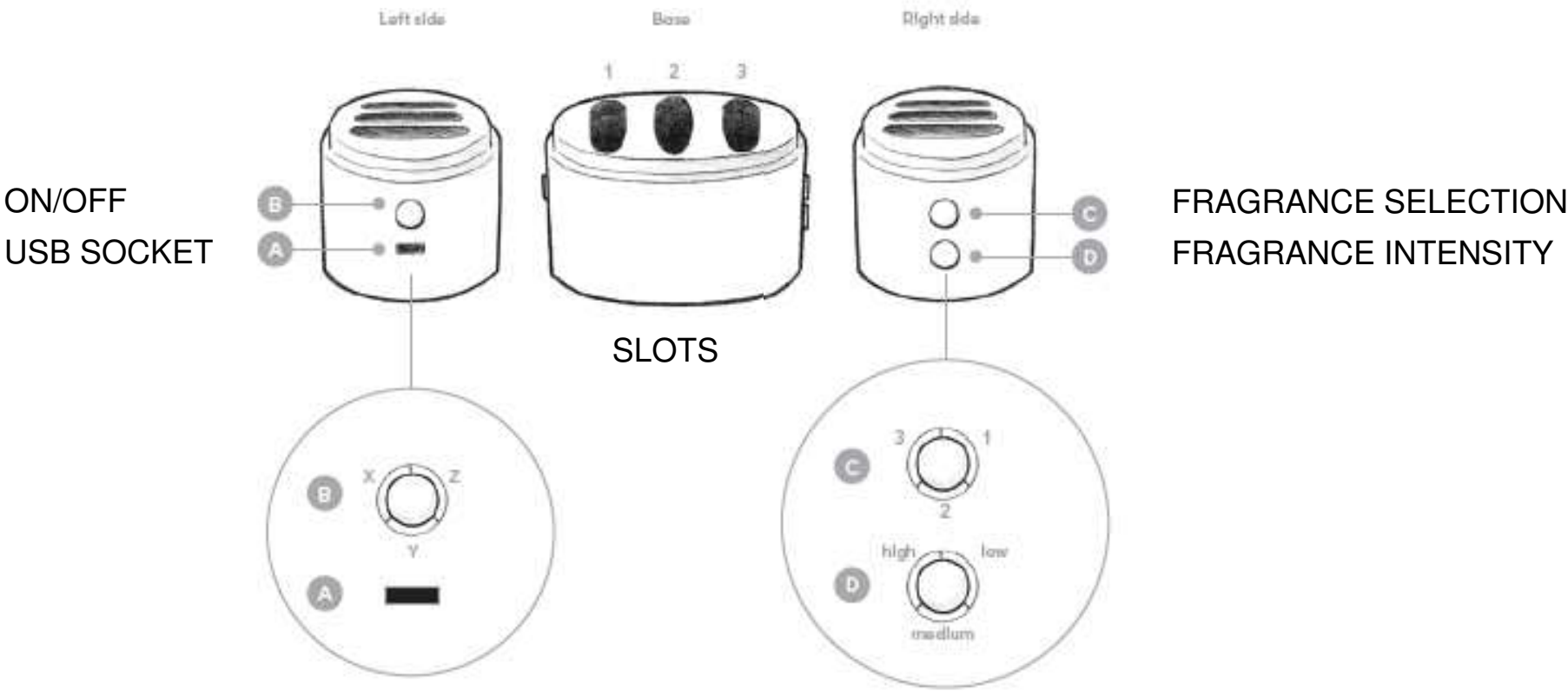
ASSEMBLY OVERVIEW

Contents of the hatbox:

- Base and chimney (1) (2)
- Leather cover (3)
- 3 fragrance refills (4)
- USB cable and power adapter (5 & 5A)
- Instructions manual (6)

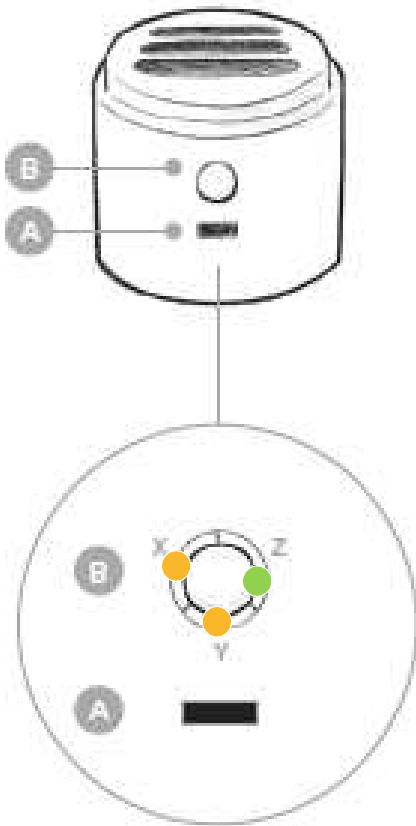


BUTTONS/DESCRIPTIONS



RECAP ON OFF BUTTON

Left side



Segment Y to show if the device is powered with cable AND SHOWS WHEN DEVICE IS ON

Segment Z to show battery status

Segment X to show connectivity status : off = not switched on, blinking = connecting, solid = connected

ON OFF BUTTON ACTIVITY

POWER CONNECTION

The **yellow LED light (Y)** in the bottom of the ON OFF button (B) is turned on when the device is powered with cable.

If cable is connected and device is OFF led light is FIXED

If cable is connected and device is ON led light is BLINKING (to define with exalia blink frequency)

If cable is NOT connected and device is ON led light is BLINKING (to define with exalia blink frequency)

If cable is NOT connected and device is OFF led light is OFF

BATTERY

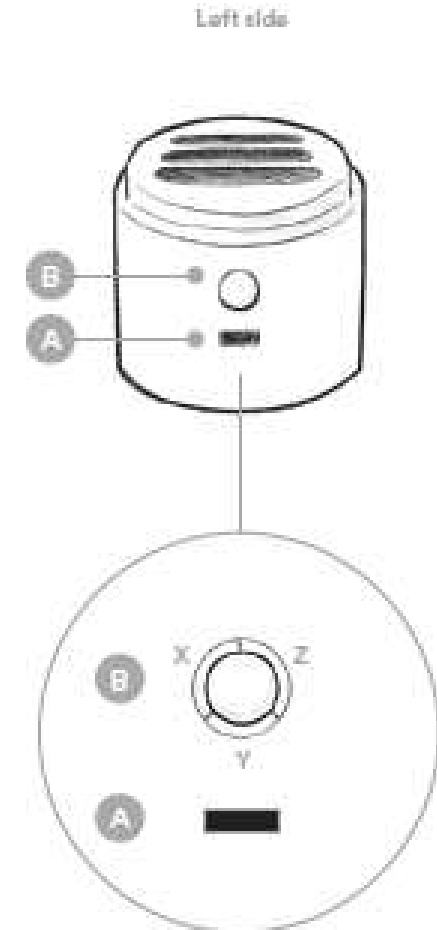
The **green LED light (Z)** in the top right of the button is blinking when the battery is charging, and is turned on when the battery is charged.

When the battery is discharged the light is turned off.

WIFI CONNECTION

The **yellow LED light** in the top left **(X) is blinking** while the smart diffuser is trying to connect to the platform. This light will turn on when configuration is finished and the connection is achieved .

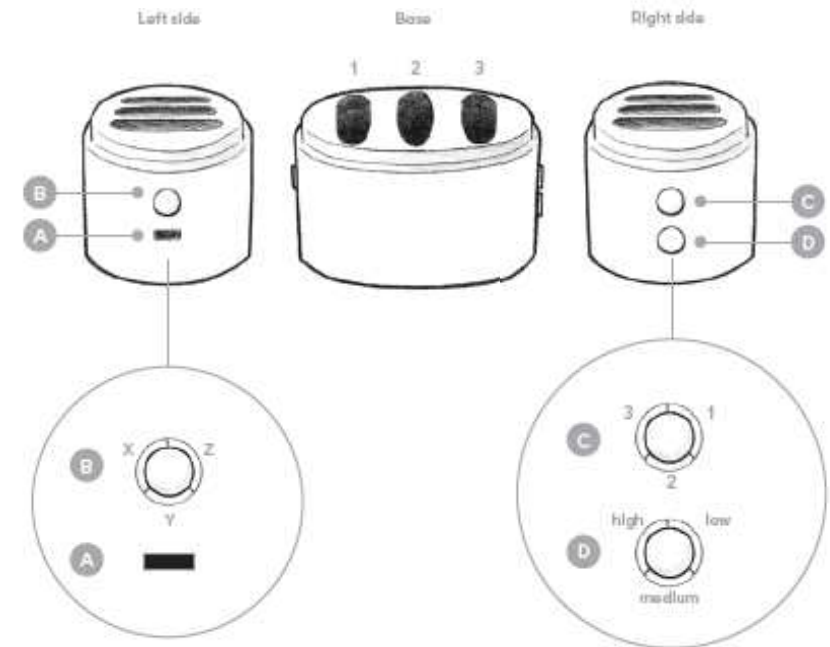
In case of OFF line use when button On is pressed, the upper LED light (X) starts blinking to find wifi and then switches off - has no light



RESTORE FACTORY SETTINGS

You can reset your smart diffuser by restoring the factory settings by **pushing on the 3 buttons at the same time during 10 seconds.**

Then the **yellow LED light** in the upper part of the ON button (X) **blinks again.**



OFF LINE MANAGEMENT – FRAGRANCE CHOICE

To select the desired fragrance, **press** the appropriate **button (C)**:

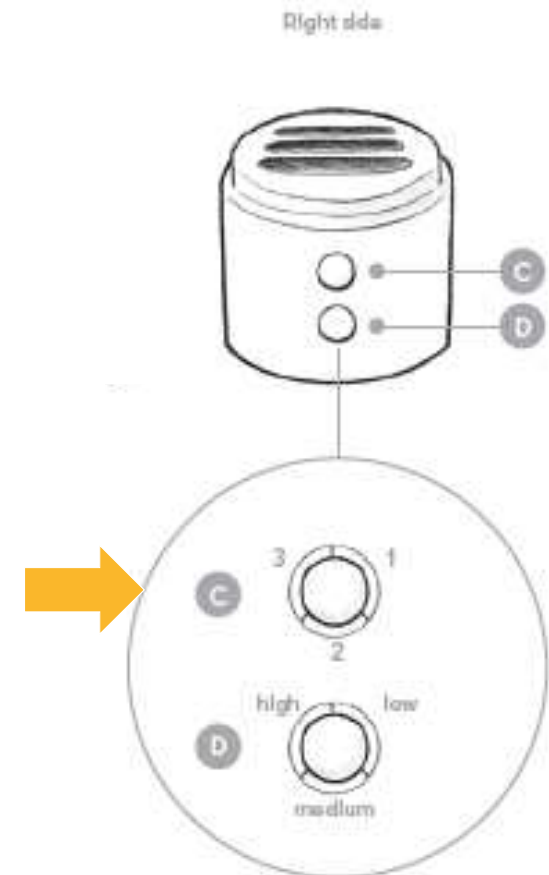
once to select the fragrance in slot 1,

twice to select the fragrance in slot 2,

three times to select the fragrance in slot 3.

The first, second or third **LEDs** will turn on each in correspondence to the fragrances in succession.

When the fragrance in the refill is finished, the **corresponding segment blinks** and **the scent is no longer dispensed**.



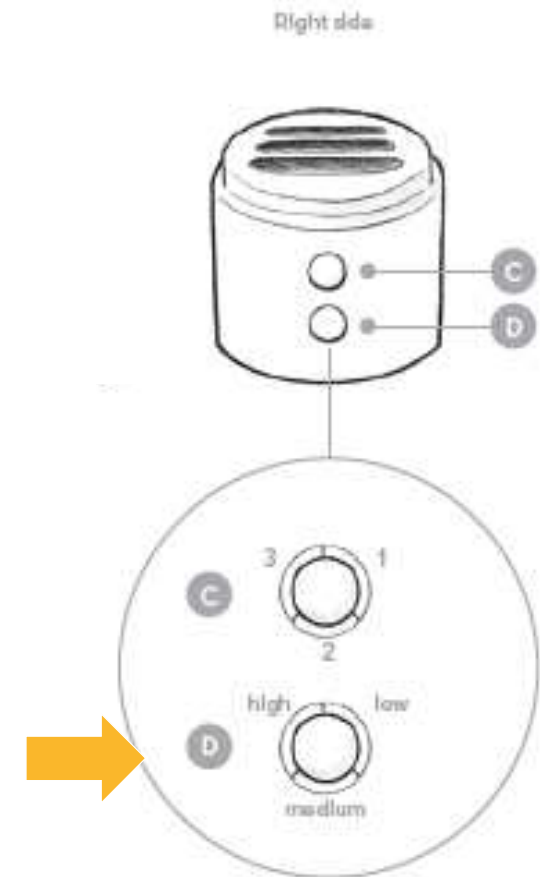
OFF LINE MANAGEMENT – INTENSITY CHOICE

To select the intensity of the fragrance, **press** the dedicated **button (D)**:
once to select **low** fragrance **diffusing** intensity,
twice for **medium diffusing**,
three times for **high intensity** diffusion
of the chosen fragrance.

The first, the first and the second or all LEDs will turn on respectively in correspondence to the low, medium and high fragrance levels selected.

In this use mode, the device will automatically turn off after an hour, unless it is stopped first by the user by pressing the OFF button (B).

Every time user has finished with one fragrance or the device is switched off and back switched on, fragrance selection must be done from scratch.



FRAGRANCE AND INTENSITY LIGHT FUNCTIONING

Fragrance choice and fragrance intensity leds – will be light and have same behaviours also when selection is done through app or we platform