

Pro Audio Solutions

Wireless BT Audio Direct Box

User Manual



BLT-96





Thank you for choosing Kopul.

The Kopul BLT-96 allows you to wirelessly stream audio from Bluetooth-enabled devices like smartphones and tablets to professional equipment like PA systems, powered speakers, and mixing boards. The rugged all-metal DI box accepts Bluetooth signals up to 100 feet away and outputs the audio with two balanced XLR connectors. The audio can also be monitored from the 3.5 mm headphone output.



This DI box features Bluetooth 5.3, which optimizes data transmission and is capable of transferring audio with sampling rates up to 96 kHz. Bluetooth 5.3 also improves reliability while minimizing interference that can degrade an audio signal.

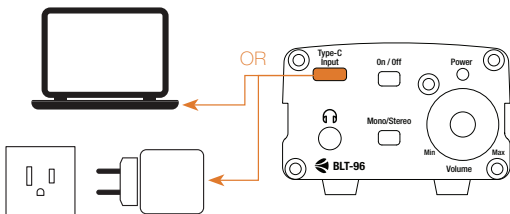
The BLT-96's USB-C port allows you to run the device from a computer or USB wall charger, and its on/off switch can pause the audio without turning off or disconnecting your gear. A mono/stereo output selector gives you the option of outputting a stereo or two-channel mono signal for the best recording and playback results.

Precautions

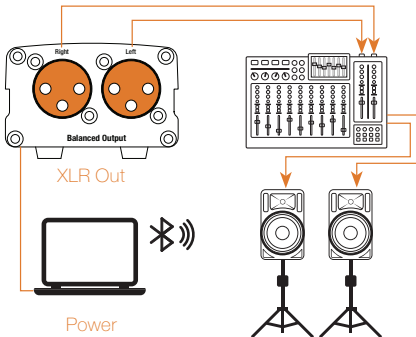
- Please read and follow these instructions, and keep this manual in a safe place.
- Keep this unit away from water and any flammable gases or liquids.
- Do not attempt to disassemble or repair the equipment—doing so will void the warranty, and Kopul will not be responsible for any damage.
- Use only the correct, recommended voltage.
- Clean the unit with only a soft, dry cloth.
- Exposure to high sound levels can cause permanent hearing loss. Avoid listening at high volumes for extended periods of time.
- All images are for illustrative purposes only.

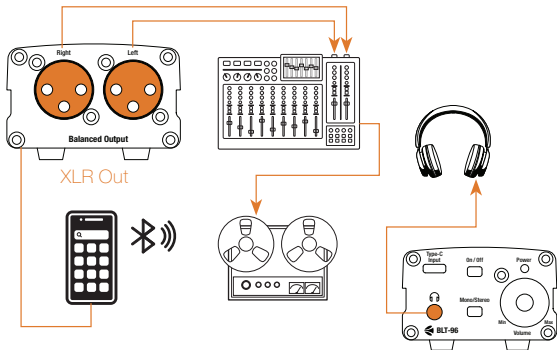
Powering the BLT-96

The BLT-96 is powered via its USB-C port. Use the included USB cable to connect a power source like a computer or USB wall charger. When the power switch is ON, the green LED indicator lights up.



Connecting the BLT-96





Establishing the Bluetooth Connection

Make sure the BLT-96 is turned on, and the Bluetooth setting on your device is in scan mode.

Open the settings on your device and select the BLT-96 from the list of discovered devices.

Once selected, the BLT-96 will automatically pair with your device.

Controls

ON/OFF Switch: Select ON to power the BLT-96. The LED indicator lights up when the power is on. Select OFF to discontinue streaming without powering down or disconnecting the other sound components.

Mono/Stereo Selector: Select Mono to sum the input signals and output the same audio on both channels. Select Stereo to maintain a stereo input signal or to output two discrete channels to a mixing board or recorder.

Volume Knob: Controls the output signal volume. Increase the volume of your audio source if the output signal isn't loud enough when the BLT-96 is at maximum volume.

Specifications

Number of Channels	2
Active/Passive	Active
Power Supply	USB Type-C 5 V
Audio I/O	XLR-M 3-pin balanced output 1/8 in. (3.5 mm) TRS headphone output
Merge/Summing	Selectable stereo or mono output
Wireless	Bluetooth 5.3
Wireless Range	100 ft. (30 m)
Frequency Response	20 Hz to 20 kHz

Audio Sampling Rate	Up to 96 kHz
Output Impedance	600 Ω
Volume Control	Yes (stepless)
Signal to Noise Ratio	90 dB
Maximum Gain	+6 dB (source dependent)
Compatibility	Bluetooth A2DP compatible devices
Material	Steel
Dimensions (W × H × D)	2.5 × 1.7 × 3.5 in. (63 × 43 × 89 mm)
Weight	6.4 oz. (181 g)

One-Year Limited Warranty

This KOPUL product is warranted to the original purchaser to be free from defects in materials and workmanship under normal consumer use for a period of one (1) year from the original purchase date or thirty (30) days after replacement, whichever occurs later. The warranty provider's responsibility with respect to this limited warranty shall be limited solely to repair or replacement, at the provider's discretion, of any product that fails during normal use of this product in its intended manner and in its intended environment. Inoperability of the product or part(s) shall be determined by the warranty provider. If the product has been discontinued, the warranty provider reserves the right to replace it with a model of equivalent quality and function.

This warranty does not cover damage or defect caused by misuse, neglect, accident, alteration, abuse, improper installation or maintenance. EXCEPT AS PROVIDED HEREIN, THE WARRANTY PROVIDER MAKES NEITHER ANY EXPRESS WARRANTIES NOR ANY IMPLIED WARRANTIES, INCLUDING BUT NOT LIMITED TO ANY IMPLIED WARRANTY OF MERCHANTABILITY OR FITNESS FOR A PARTICULAR PURPOSE. This warranty provides you with specific legal rights, and you may also have additional rights that vary from state to state.

To obtain warranty coverage, contact the Kopul Customer Service Department to obtain a return merchandise authorization ("RMA") number, and return the defective product to Kopul along with the RMA number and proof of purchase. Shipment of the defective product is at the purchaser's own risk and expense.

For more information or to arrange service, visit www.kopulcables.com or call Customer Service at 212-594-2353. Product warranty provided by the Gradus Group. www.gradusgroup.com KOPUL is a registered trademark of the Gradus Group.

© 2025 Gradus Group LLC. All Rights Reserved.