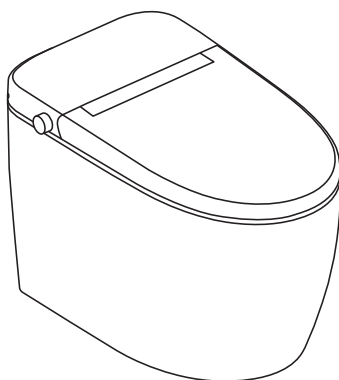


Instruction Manual

T183A SERIES

Smart Toilet




- 
- ※ Please read this Instruction Manual before installing or using your product.
 - ※ Please keep this Instruction Manual properly in a safe place for future reference.


Table of Contents

Safety precautions.....	1
Component list.....	4
Specification.....	5
Parts names.....	6
Product drawing	7
Power and water connection.....	7
Installation precaution.....	8
Product installation.....	9
Remote control installation.....	14
Remote control panel overview.....	15
Remote control instruction.....	16
Side knob instruction.....	18
Side button description.....	19
Cleaning & maintenance.....	20
How to do?.....	21
Trouble shooting.....	22
Maintenance service sheet.....	24



Safety Precautions

To prevent damage to the unit and possible injury to users, please follow the safety warnings. Please be sure to carefully read through the user's manual before installation. Keep the user's manual after installation to refer to for troubleshooting advice.

Symbols And Meanings

 WARNING	Could result in serious injury or death.
---	--

The following symbols are used to indicate important safety precautions when using the product.

	Prohibited.
	Pay close attention; caution.



WARNING



Prohibited

It is not allowed to continue using if the product has some breakdown:

Product heat abnormally;

Product is smoking;

Product has abnormal sound and smell;

Product is leaking, broken or damaged;

Toilet pan is blocked, etc.

When the breakdown happens, if it do not handle in time and continue using, it might trigger the problems like electric shock, injury, firing or water penetration inside the room, etc.

Banana oil, gasoline, putty-powder, nylon brush or other (non-neutral) detergent is not allowed to clean the plastic parts like toilet seat cover, otherwise it might trigger chemical reaction or leakage, damage the product and cause people injury.

Loosen electric outlet is not allowed as it might trigger electric shock or firing.

It is not allowed to pull out and plug in the electric plug by wet hand as it might trigger electric shock or firing.

It is not allowed to touch the electric plug when it is thundering and lighting as it might trigger electric shock.

It is not allowed to use other electric resource, the load of using electric outlet could not be too big, as it might trigger firing due to over-heat.

Detergent, water, wash detergent or urine is not allowed to spot into body and electric outlet, as it might trigger electric shock or firing.

It is not allowed to let child standing or put heavy goods on the seat and cover, toilet pan or seat body, heavy hitting or knocking is not allowed.

It is not allowed to disassemble, repair this product, (it must go for professional repair person service if it is necessary to repair), otherwise, it might cause the damage to this product.

Do not randomly damage the electric plug and electric line, if the electric line, electric plug is damaged, please do not use it any longer or repair by oneself, it must be repaired by professional person, otherwise, it might trigger short-circuit, electric shock, firing.

If the power cord is not long enough, please do not use a extension cord.

The stove or lighted cigarette is not allowed to be placed next to the toilet pan, cigarette butt etc is not allowed to be thrown into toilet pan.

Do not block the air openings of the product. Keep the air openings free of lint, hair, and the like.

Do not use while bathing.



WARNING

When using in shower room, please install air exchange equipment to ensure the air in the shower room not too moist. This product is electric products, it is not allowed to install it in the place that is easy high wet, easy split by water, otherwise it might trigger electric shock or fire.

Please ensure to cut off the electric power before washing this product, do not use water to directly wash this product, otherwise it might trigger the electric shock or fire.

Please put and use this product in the shadow, must not put directly beneath the sun, otherwise it might cause the color-fading, or burn the surface of product due to the instability of temperature.

Do not use industrial water, wastewater, seawater, reclaimed water and other sewage, otherwise it may cause skin inflammation and other problems.

Persons (including children) with physical, perceptual, intellectual disabilities or lack of experience and common sense need to use the product under the guidance or supervision of someone else, or they may cause electric shock, injury or fire.

Please notice the assembly location of electric wiring plug, electric plug should be the water-proof plug. Assembly location of electric plug must be over 0.5m(19.7in) above the floor, and far away from shower, bathtub, otherwise it might cause electricity leakage.



Caution

When installing this product, please remove the old hose assemblies owned by users and install them with new hose assemblies. Do not reuse the old hose assemblies to avoid related safety problems.

The grounding wire of this product must conform to the stipulated construction mode, and the three-level grounding structure must be grounded, otherwise the use of this product is prohibited.

Electric plug need to plug in the electric with air switch.

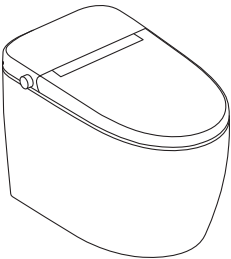
In the same room where this product is installed, a switch of water inlet angle valve needs to be installed at a location within reach. It is used in emergency situations to cut off the waterway of this product without the aid of tools; otherwise, unexpected failures of this product may occur and it will cause user loss.

If you have not used this product for a long time, please close the angle valve, press the water release button to drain the water of ceramic itself and cut off the power; When using the product again, please wash first to prevent water quality problems and skin diseases.

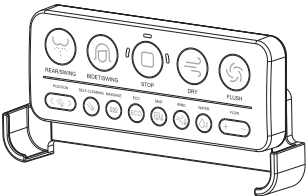
When the outside air temperature is lower than 0°C, in order to prevent water leakage caused by external filter and other accessories likely freezing, please be sure to close the water inlet valve and drain the left water; If pipe has been frozen, please raise the room temperature and wait for pipe normal then use the toilet, otherwise the product may not be used normally.

Component list

SMART TOILET



REMOTE CONTROL



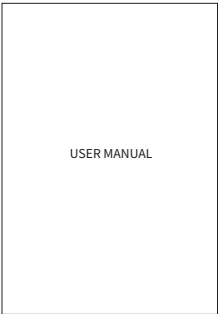
SCREWS & EXPANSION NUTS (2pcs)



TWO 7TH BATTERY



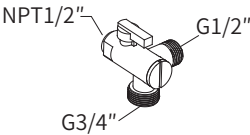
USER MANUAL



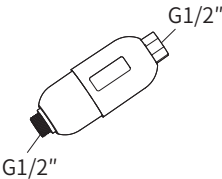
SEALING RING



INLET VALVE



FILTER



TEFLON TAPE



15/16-14UNS ADAPTER

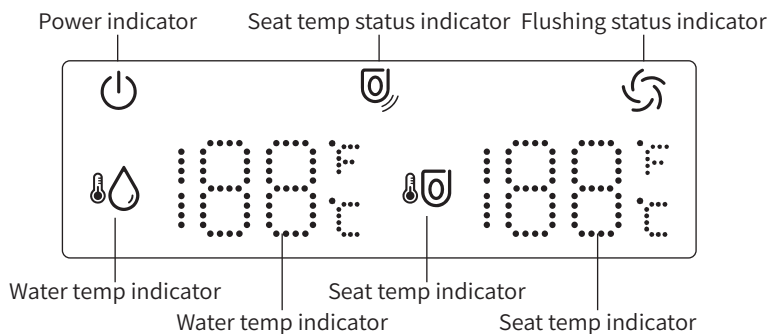
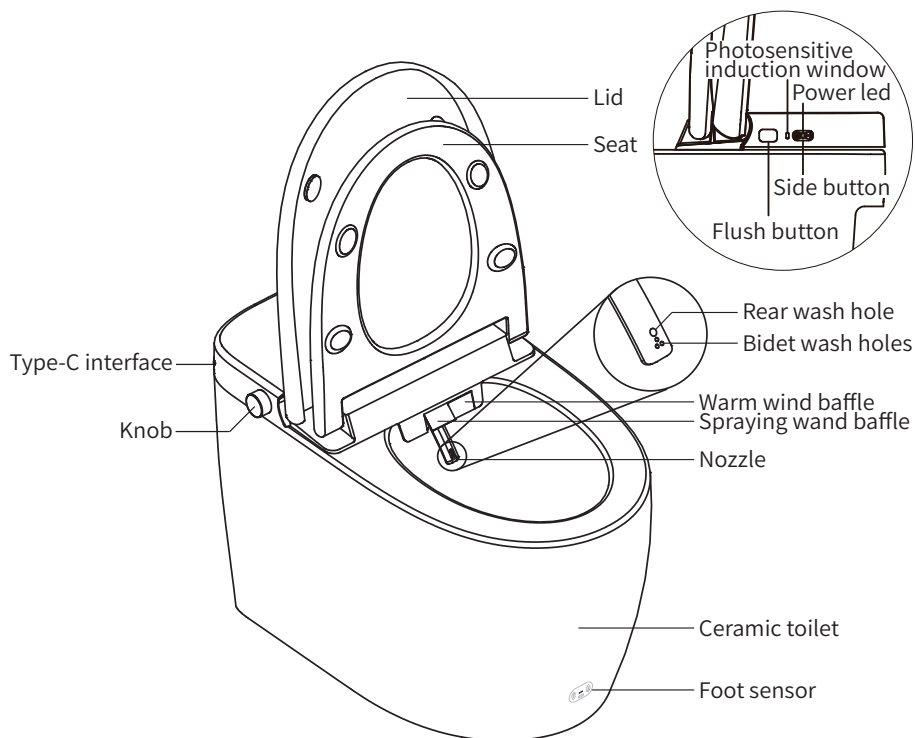


Specifications

Rated voltage			120V~ 60Hz			
Power cord length			About 1.2m (49 in)			
Cleansing	Spray volume	Rear wash	About 0.5L (0.13 gal)-0.7L (0.18 gal) /min (water pressure 0.2MPa, 3 levels adjustable)			
		Bidet wash				
	Swing		Swing cleansing back and forth			
	Massage		Pulsing cleansing, Powerful cleansing			
	Water flow and nozzle		3 levels adjustable			
	Water temperature range		About 68°F-107°F (4 levels adjustable)			
	Safety device		Temperature limit circuit, thermostat, thermal fuse			
Drying	Warm wind temperature		About 89°F-134°F (3 levels adjustable)			
	Safety device		Bimetallic thermostat, thermal fuse			
Seat	Surface temperature		4 levels adjustable, room temperature about 107°F			
	Safety device		Thermal fuse			
Self-cleaning	Antibacterial seat/nozzle		Antibacterial material/stainless steel nozzle			
	Automatic nozzle cleaning		Self-cleaning			
	Pre-wetting		Prewet the toilet bowl before each use			
Toilet	Flush consumption		1.28Gpf/4.8Lpf			
	Flushing mode		Siphon jet			
	Rough-in		305mm (12.0 in)			
Rated power	1150W		Maximum power	1600W	Waterproof level	IPX4
Water supply temperature	39°F-95°F		Ambient temperature	37°F-104°F	Net weight	About 35.4kg (about 78 lb)
Dimension	About 680 * 390 * 443 mm (About 26.8 * 15.4 * 17.4 in)		Water supply pressure	Minimum necessary dynamic pressure: 0.16MPa (flow rate 20L/Min) Maximum static pressure: 0.75MPa		

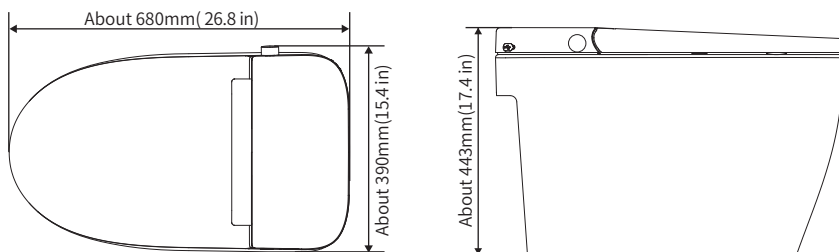
- ※1:Rated power: Set the water volume, seat temperature and water temperature to the highest level under the conditions of ambient temperature 68°F±41°F, inlet water static pressure 0.18MPa±0.02MPa, and inlet water temperature 59°F±33°F. Turn on the bidet function, and test the average power within 60 seconds after the temperature of the outlet water stabilizes.
- ※2:Maximum power: Set the water volume, seat temperature, and water temperature to the highest level under the conditions of an ambient temperature of 73°F±35°F, an inlet static pressure of 0.18MPa±0.02MPa, and an inlet temperature of 41°F±33°F. Turn on the bidet function and continue to work stably at the maximum power for a cleaning cycle.
- ※3:Water consumption test: Test the water consumption separately under the water pressure 0.16Mpa and 0.55Mpa three times. Get six values in total, then divide the sum by six and the average is the nominal water consumption.

Parts Names

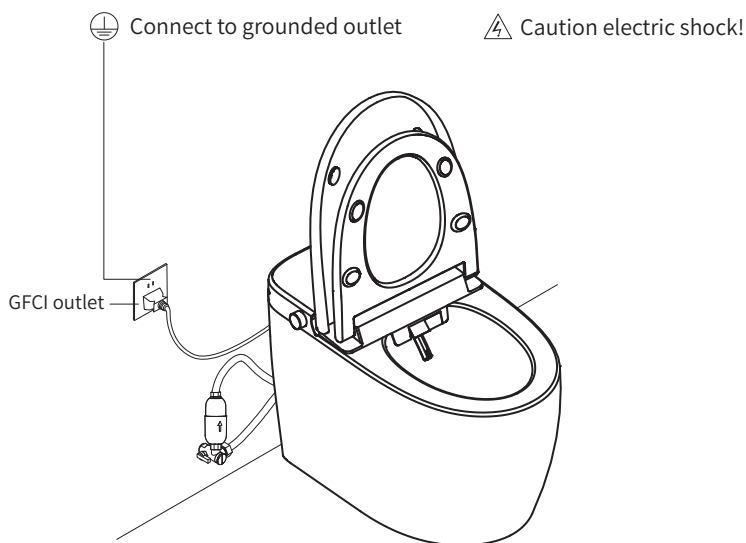


※ After restarting the toilet, press the “DRY” button within two minutes on the remote control to switch the temperature measurement unit on the toilet display.

Product Drawings



Power and Water Supply Connection



※ If the power cord is not long enough, please use extension line which is made by certificated manufacturers.

※ Only for reference.

Installation Precaution

We reserve the right to change, update, modify, alter, redesign this manual/product or its policies without prior notice!

We shall not be liable for any injuries or property damages in connection with this product during installation or use of the product!

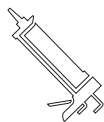
The product must be installed by a fully insured and licensed plumber only. Installation of the product by anyone other than fully insured and licensed plumber shall void limited warranty. We recommend that the licensed plumber have experience in the installation of the product.

During unpacking the product and prior to installation inspect your new product for any damages or missing parts. Do not attempt to install or operate the product if the product is damaged.

Installation Tools



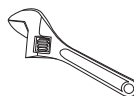
Hammer Drill



Caulking Gun



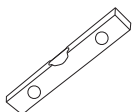
Tape Measure



Adjustable Wrench



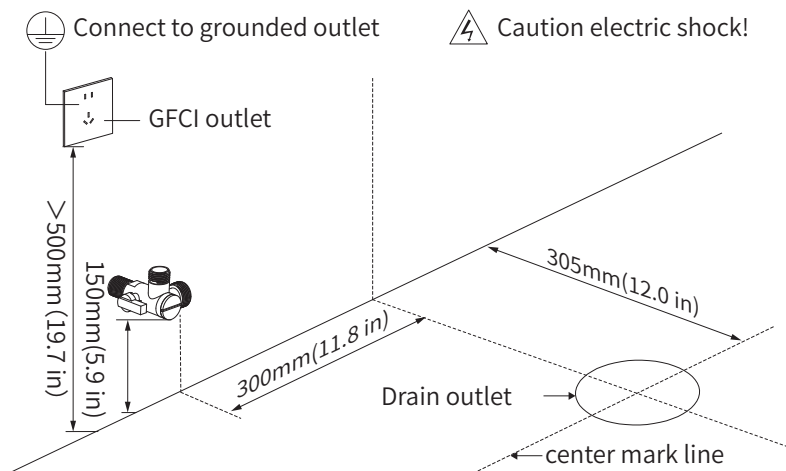
Pliers



Product Installation

1. Install the water inlet valve

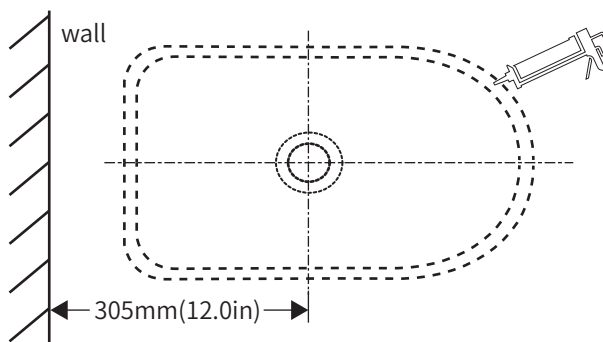
Clean the ground and dry the water before installation. Mark the central lines of the draining outlet, and install the inlet valve on the wall.



2. Mark the curve of ceramics

Align the drain hole of ceramic with the central line. Mark the curve of ceramics for later installation.

Silicone sealant application: Glue the outline with silicone sealant.



Product Installation

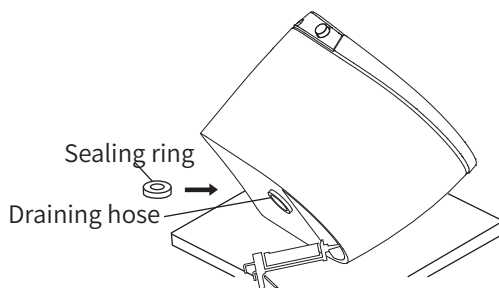
3.Toilet installation(Method 1)

① Sealing ring installation

Gently tilt the toilet sideways until it rests on the side surface.

Install the sealing ring evenly along the outlet, and the small end of the sealing ring facing the toilet.

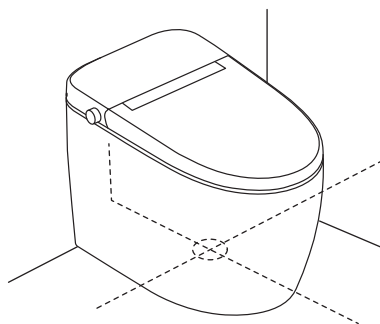
Glue the edge of toilet bottom with silicone sealant, place the toilet base along the outline and position the toilet base.



② Toilet (ceramic) installation

Lift the toilet, take the floor drain as a reference, align the ceramic body of the toilet with the ceramic contour line drawn on the ground, and slowly put the ceramic on the ground so that the two marks overlap. After overlapping, press the ceramic down (can be pressed by the weight of the human body) so that the sealing ring fully contacts the ground.

※Do not move the ceramic or shake it left and right after the marks are overlapped, otherwise the seal produced by the sealing ring may be damaged and cause water leakage.

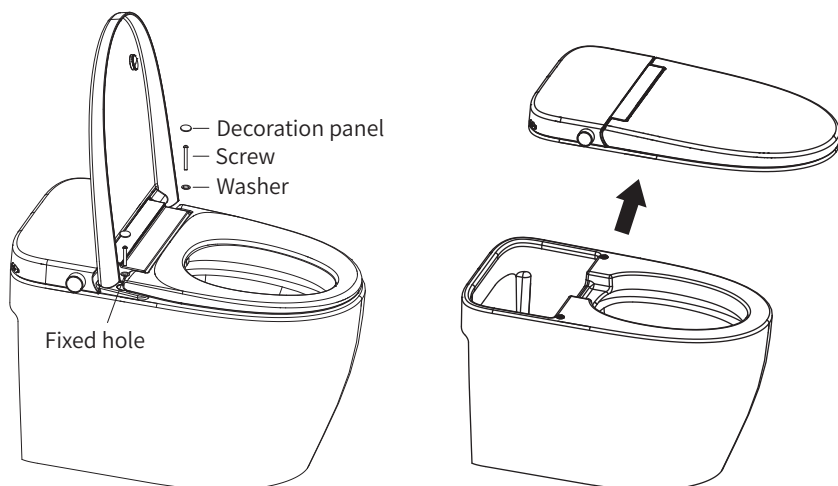


Product Installation

4.Toilet installation(Method 2)

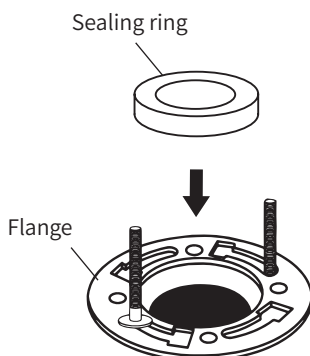
① Remove the bidet seat

Remove the fixing screws of the toilet; remove the connecting pipes and wires of the toilet, separate the bidet seat from the toilet.



② Sealing ring installation

Place the sealing ring onto the flange.



Product Installation

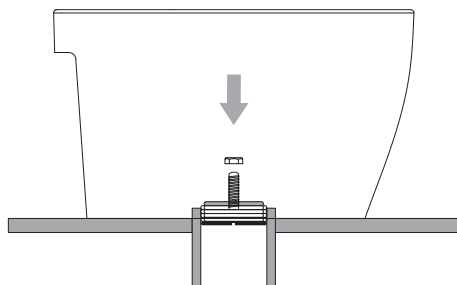
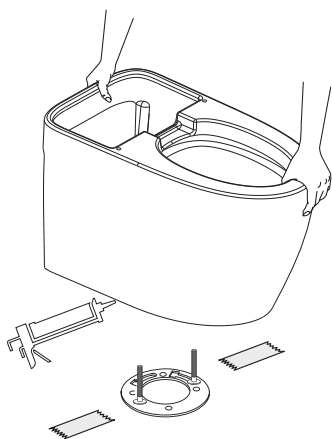
③ Ceramic installation

Glue the edge of toilet bottom with silicone sealant.

Line up the toilet base over the flange screws.

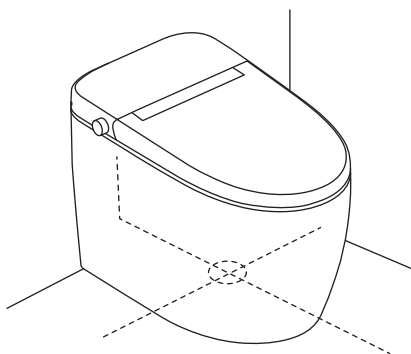
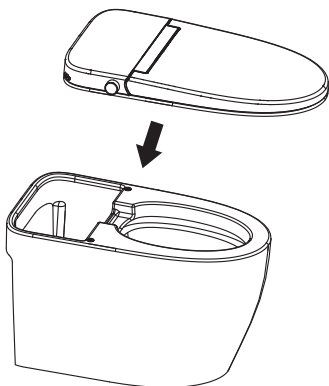
Place the toilet base and secure the flange bolts.

Glue the edge of toilet bottom with silicone sealant, place the toilet base along the outline and position the toilet base.



④ Bidet seat installation

Adjust the bidet seat to match the toilet, use screws to fix the bidet seat on the toilet.



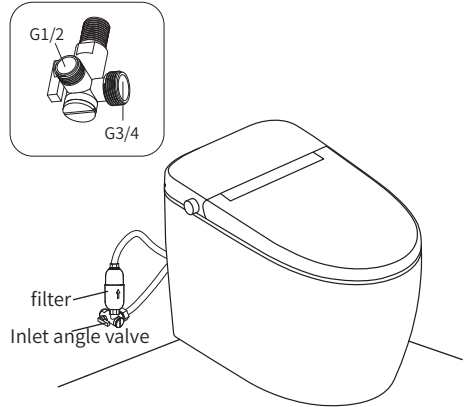
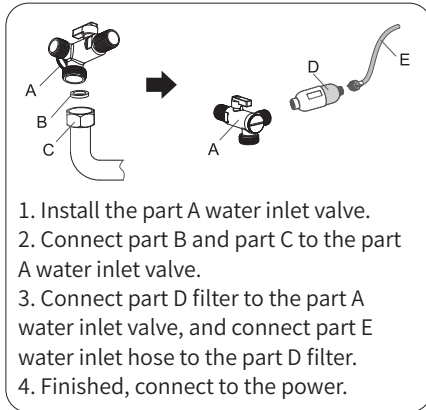
Product Installation

5. Connect the water inlet valve and filter

As shown in the following figures.

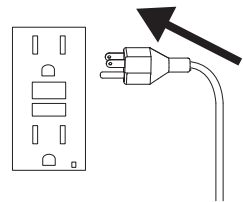
NOTE:

Do not use the smart toilet immediately after installation, use it after 48 hours.



6. Connect to the power

Only connect this product to a properly grounded outlet.



7. Using the product for the first time

① Connect to the power and open the water inlet valve.

Check every function buttons of the remote control and side control. such as rear/bidet wash, dry, flow adjustment, water temp adjustment, massage cleaning, swing cleaning, LED, seat temp adjustment, etc.

② Rear/Bidet wash performance test.

Touch the seat sensor built-in the seat with hand to activate the smart toilet and at the same time press Rear/Bidet button to check if the Rear/Bidet wash functions work properly.

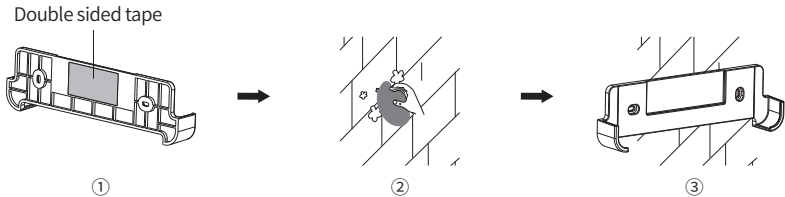
Instructions for Remote Control Installation

Method 1:

- ① Remove off the double-sided adhesive surface on the back of the remote control holder.
- ② Clean dust, grease, water droplets on the walls and wipe them clean.
- ③ Press the remote control fixed seat with double sided tape on it. Press it evenly for 3 to 5 minutes.

Attach the remote control fixed seat to the wall.

Note: The method is applicable to glazed tiles, glass and smooth wall.

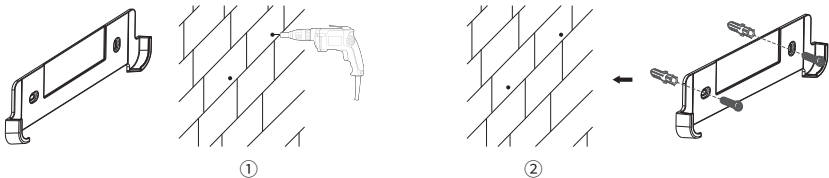


Method 2:

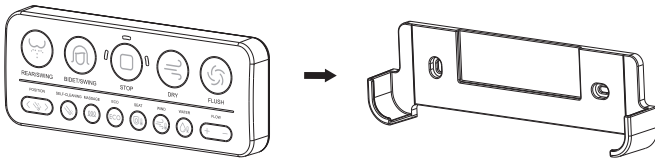
- ① Make two holes in the wall with a drill bit.

Note: the position of the hole shall be satisfied for user to get the remote control conveniently when sitting on the seat.

- ② Point the expansion plug on the wall at the fixing hole of the remote control and lock the bolts.



Put the remote control on the fixed base after installing the battery.

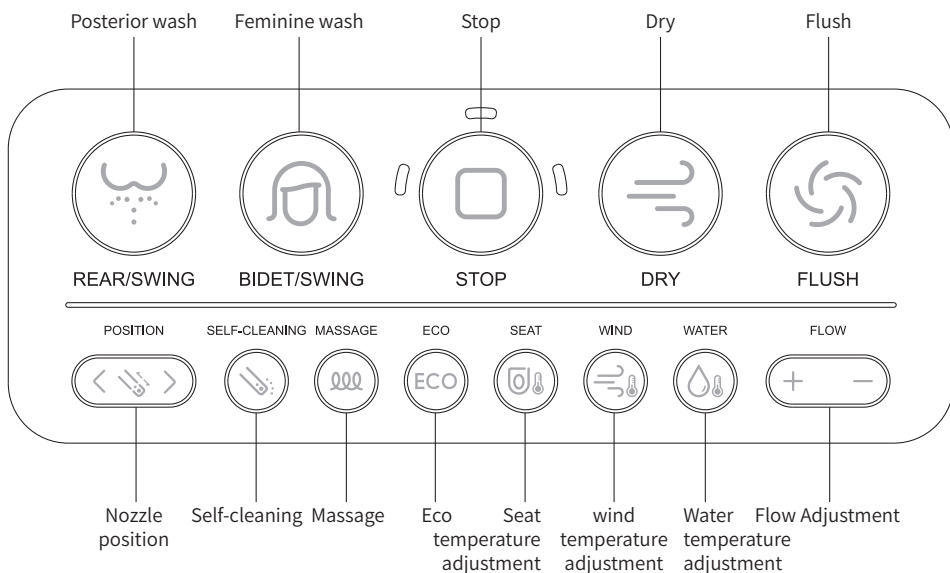


Tips:

※ Please place remote control on the holder after each use. Do not let remote control fall on hard ground, otherwise it would cause malfunction or damage to the remote.

※ Do not spill water on remote control or drop it into water, otherwise it would cause malfunction or damage to the remote.

Remote Control Panel Overview



Remote control to code:

Leave the seat state, Long press the knob on the side of the fuselage for 3s, issued a drop. Long press the remote control woman wash + drying key, enter the code mode, press the water temperature key to select the code value, press the stop key, long drop, the code success. The code should be completed within 2 minutes, and the code can not be matched after the success.

TIPS:

Please keep sitting and make sure the seat sensor is activated before operating the smart toilet by remote or side control.

Using Instructions



STOP

Press the button, all functions stop.



REAR / SWING

Short Press the button to activate the posterior wash function. It will stop after 2 mins automatically or by pressing the stop button. This function will also stop when user leaves.
※ Under Posterior/Feminine wash mode, Long Press the button you can activate the swing function. The nozzle sprays back and forth automatically. Press the button again to stop.



BIDET / SWING

Short Press the button to activate the feminine wash function. It will stop after 2 mins automatically or by pressing the stop button. This function will also stop when user leaves.
※ Under Posterior/Feminine wash mode, Long Press the button you can activate the swing function. The nozzle sprays back and forth automatically. Press the button again to stop.



DRY

Press the button, you can activate the drying function.



FLUSH

Press the button to flush the toilet.



POSITION

Under posterior wash or feminine wash mode, pressing > button to move the spray position forward, pressing < button to move the spray position backward. The spray position is 3 levels adjustable, the initial level is 2th. Under different levels, it has corresponding indicators.



SELF-CLEANING FUNCTION

Press the "Self-cleaning" button, the spray arm can be retracted back and forth, and clean it self.



MESSAGE

Under Posterior/Feminine wash mode, you can activate the massage function.
1. Impulse massage: the nozzle sprays with impulse water flow to clean the body.
2. High pressure massage: the nozzle sprays with high pressure water flow to clean the body.
※ Massage loop control: Impulse massage-High pressure massage-Stop.



ECO

Press the button to enter energy saving mode. Under energy saving mode, seat temperature is low(level 1); Night light turns off, only power indicator turns on.
※ Energy saving mode will resume the seat temperature and video display when used.
※ Energy saving mode will be restored when user leaving.

Using Instructions



SEAT TEMPERATURE ADJUSTMENT

Every time you press the button, the seat temperature will be adjusted by one level, and 3 levels will be cyclically adjustable and closed.



WIND TEMPERATURE ADJUSTMENT

In the drying state, every time you press the button, the air temperature will be adjusted by one level, and 3 levels will be cyclically adjustable.



WATER TEMPERATURE ADJUSTMENT

Under posterior wash or feminine wash mode, each time you press the "water temperature" button, the water temperature is adjusted by one level, 3 levels can be cyclically adjusted and normal temperature (long press the "water temperature" button to Enter the normal temperature), default setting in level 2, and the corresponding level indicator light is on.



FLOW ADJUSTMENT

Under posterior wash or feminine wash mode, pressing "+" button to increase the water flow, pressing "-" button to decrease the water flow. The flow is 3 levels adjustable, the initial level is 2th. Under different levels, it has corresponding indicators.

COMBINATION FUNCTION KEYS

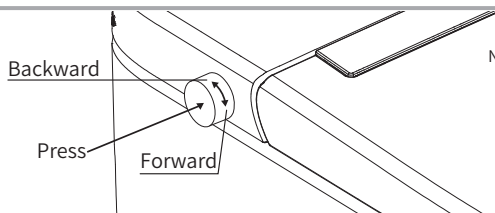
Stop + Self-cleaning: Long press for 5 seconds to clean the spray bar by Manual

Stop + Bidet wash: Long press for 5 seconds to activate or deactivate the night light function

Stop + Massage: Long press for 5 seconds to activate or deactivate the kick flip function
(some models do not have this function)

flush + Rear wash: Long press for 5 seconds to activate or deactivate the Pre-wetting
(some models do not have this function)

Side Knob Control Instruction



Side Knob Control Instruction
No need to reset the side knob after each use

■ User sitting

- Bidet wash: Twist the side knob forward, spray wand extend, bidet wash works about 2 minutes.
- Rear wash: Twist the side knob backward, spray bar extend, rear wash works about 2 minutes.
- Nozzle position: Under bidet/rear wash, twist the side knob forward or backward to adjust nozzle position.
- Stop: Under bidet/rear wash, press the side knob to stop washing.
- Drying: press and hold the side knob for 2 seconds to start air drying;
- Wind temp: Twist the side knob forward to increase the wind temp, backward to decrease the wind temp.
- Flush: Press the side knob to flush the toilet.

■ User standing

- Press the side knob to flush the toilet.

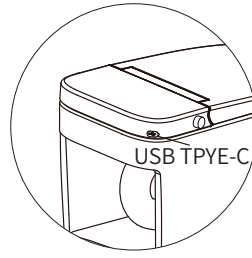
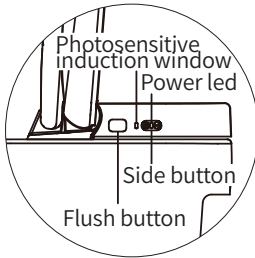
■ Kick sensing

- When the lid and seat ring are closed, touch the kick sensor lightly to open the lid automatically; when the lid is open and the seat ring is closed, touch the kick sensor lightly to open the seat ring automatically; when the lid and seat ring are open, touch the kick sensor lightly to achieve automatic flushing.

■ Motion sensing

- When the lid and seat are closed, the lid will be automatically opened by approaching the toilet; When the lid or seat is opened and the seat sensor is activated, after about 90 seconds, the lid and the seat will automatically close, when user leaves.
When the lid or seat is opened and the seat sensor is not activated, after about 150 seconds, the lid and the seat will automatically close, when user leaves.

Side button description



Drying on/off:

Press and hold “+” or “-” for about 2 seconds to turn on or off the drying in the seating state and non-rinsing state.

Air temperature adjustment:

In the drying state, short press “+” or “-” to adjust the air temperature.

Seat temperature adjustment:

In the non-flushing and non-drying state, short press “+” or “-” to adjust the seat temperature.

Water temperature adjustment:

Press “+” or “-” in the flushing state to adjust the water temperature.

Flushing function:

Short press the flushing button to start the flushing.

Night light function:

Press and hold the “-” for about 5 seconds to turn on or off the night light function when you are not seated.

Auto off seat flushing:

Press the flushing and “-” at the same time for about 5 seconds in the non-sitting state to open or close the automatic flushing function of leaving the seat.

Foot sensing flush:

Press the flushing and the “+” at the same time for about 5 seconds in the non-sitting state to turn on or off the foot sensing flush.

Power-off flushing function:

When the power is off, connect to the USB type C with a power bank to achieve the manual, foot sensing and off seat flushing functions(please do not cut off the power when flushing).

Maintenance and Cleaning

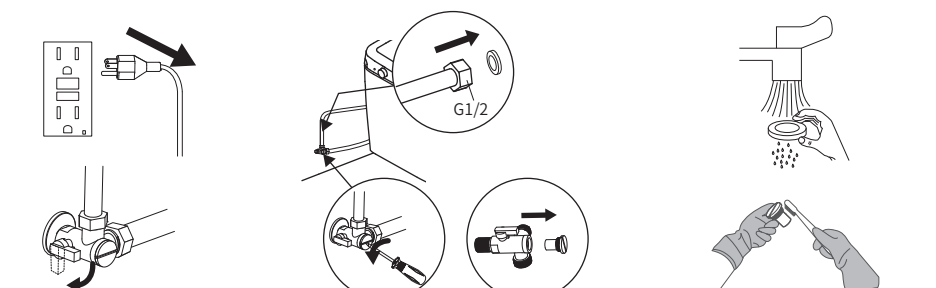
Maintenance and cleaning of toilet lid and seat

1. Turn off the power, close the water outlet valve.
2. Use soft cloth to clean the lid and seat.
 - ※Be careful not to allow water to get inside or leave detergent in the gap between the top unit and the bowl unit.
 - ※Avoid using materials that will damage the surface. Clean the surface with a soft and wet cloth.
 - ※Corrosive chemicals or cosmetics (such as cleaners containing abrasive compounds and aftershave) can not be used to clean the lid and seat.
3. Turn on the power, open the the water outlet valve.

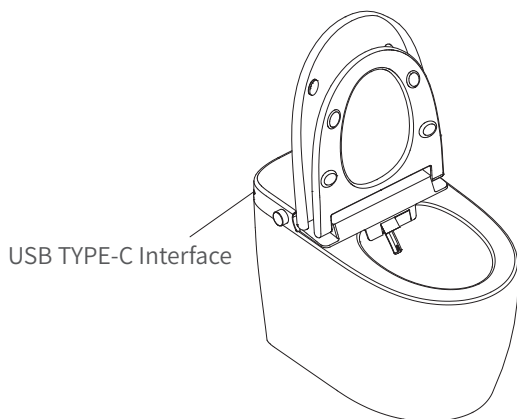
Maintenance and cleaning of the toilet bowl

1. Turn off the power.
2. Use toilet brush and toilet detergent to clean the bowl.
 - ※Corrosive chemicals (such as cleaners containing abrasive compounds and strongly acidic cleaners or strong alkaline cleaners) should not be used to clean the bowl.
 - ※Wire brush or abrasive nylon scrubbing brush should not be used to clean the bowl.
3. Turn on the power.

Cleaning The Water Filter

- 
- ① Turn off the power
Close the water outlet valve.
 - ② Remove the water-inflow filter from the inlet hose.
 - ③ Take out the filter by using a flat-blade screwdriver to unscrew the filter .
 - ④ Remove the filter and rinse it with clean water.
 - ⑤ Install the filter screen as it is, be sure to tighten it, otherwise it will cause water leakage.

How to do?



1. When the toilet can not flush automatically due to power outage.

Connect the smart toilet with power bank through the TPYE-C interface.

2. When the toilet can not flush automatically due to water outage.

- ① Flush the sewage in the toilet away with basin.
- ② After flushing, add water to the toilet to avoid stinking.

3. When the product is left unused for long time

- ① Turn off the power, and close the tee valve, drain the water in the inlet hose.
- ② Especially in winter, the water inside the hose of the toilet should be discharged to avoid freezing.

Trouble Shooting

Phenomenon	Reasons	Measures
The product out of work	Whether the power supply is plugged in.	Insert the plug or detect the power socket.
	Power outage.	Wait until the power supply restored.
	The leakage protector is disconnected.	Restart the product.
▶ Rear cleaning ▶ Bidet cleaning ▶ Dry The toilet does not flush even when the button is pressed.	The wand extends but water does not come out.	Wait until the water supply restored.
	Water pressure is weak.	Open the water outlet valve.
		Is the water filter drain valve clogged with foreign matter? Clean or replace the filter.
	Low water temperature.	Use remote control to adjust the water temperature.
	The seat sensor does not sense someone sitting.	Sit on the toilet seat properly.
The nozzle stops cleaning suddenly.	If the user moves too fast or leaves the seat, the seat sensor cannot detect in short time.	Sit on the toilet seat properly, then press "Rear" or "Bidet" button again.
Low water pressure under rear/bidet wash.	Filtration screen of inlet angle valve may be blocked	Clean or replace the filter.
	The water-inflow hose may leak	Check the hose and tighten it.
Water comes out unexpectedly from the wand.	Abnormal operation	Disconnect the power plug and wait about 1 minutes before inserting it again.
Water comes out unexpectedly from the inlet hose.	The inlet hose is defect.	Replace the inlet hose.
The toilet seat does not get warm.	The seat sensor does not sense someone sitting.	Sit on the toilet seat properly.
	Low seat temperature.	Use the remote control to adjust seat temperature.

Trouble Shooting

Phenomenon	Reasons	Measures
The air drying temperature is low.	The air drying temperature is at the lowest level.	Use remote control to adjust air drying temperature.
The toilet does not flush.	Water is not available from the water supply.	Taking water to flush.
	The water supply valve is not fully open.	Check the tee valve.
The sewage can not be flushed away completely.	The water supply valve is not fully open.	Check the tee valve.
	The water filter is clogged.	Clean the filter.
	The water supply pressure is weak.	Check the water supply.
	Flushing may be difficult due to the consistency of the waste material.	Flush the toilet again. If the bowl is not cleaned with a flushing, remove the stains with a brush or other tools.
There is residue on the bowl unit surface.	Oil and other hard-to-see grime may stick to the bowl unit surface.	Clean the bowl with a non-abrasive toilet detergent.
The remote control fail to control the toilet.	Low battery.	Replace with new batteries.
	Battery polarities are mounted reversely.	Reinstall properly.
	The remote control is too far from the toilet.	Get close to the toilet.
	The remote signal emitter e was blocked.	Clean the remote signal emitter.
LED light doesn't turn on.	The indoor light is too bright.	Please turn off the indoor light and close the curtain.
The top unit is unstable.	There is clearance between the toilet seat cushion and the bowl.	It's common phenomenon.
Water is leaking from pipe joints.	Pipe joints are loose.	Tighten the hose.
	Pipe joints keep leaking.	Close the water outlet valve and replace a new hose.

※ Notice

When encountering a problem, please read the above common troubleshooting carefully, and follow the solution instructions for product maintenance;

Please contact professional maintenance personnel, dealers in time to seek help.

There may be differences between the contents of this manual and the actual product, and the actual product shall prevail.

Maintenance Service Sheet

Product		Product code	
The selling store		Purchase date	
Province	City	Dealer (signature):	
Maintenance content			
<p>Free maintain regulation:</p> <p>1. We warrants our products to be free from defects in materials and workmanship during normal use when properly installed and serviced, for a period of three (3) years from date of purchase. This limited warranty is extended only to the ORIGINAL PURCHASER of the product and is not transferable to any third party, including but not limited to any subsequent purchaser or owner of the product. This warranty applies only to our product is purchased and installed in USA and Canada.</p> <p>2. The obligations under this warranty are limited to repair, replacement or other appropriate adjustment, at our option, of the product or parts found to be defective in normal use, provided that such product was properly installed, used and serviced in accordance with instructions. We reserves the right to make such inspections as may be necessary in order to determine the cause of the defect.</p> <p>3. This warranty does not apply to the following items:</p> <p>a) Damage or loss sustained in a natural calamity such as fire, earthquake, flood, thunder, electrical storm, etc.</p> <p>b) Damage or loss resulting from any accident, unreasonable use, misuse, abuse, negligence, improper care, or maintenance of the product.</p> <p>c) Damage or loss resulting from sediments or foreign matter contained in a water system.</p> <p>d) Damage or loss resulting from the quality of water in the region where the product is used.</p> <p>e) Damage or loss resulting from improper installation or from installation of the product in a harsh and/or hazardous environment, or improper removal, repair or modification of the product.</p> <p>f) Damage or loss resulting from electrical surges or lightning strikes or other acts which are not the fault of the product or which the product is not specified to tolerate, including failure to use the factory equipped cord and plug or use of a loose or faulty electrical outlet or use of a current or socket other than a 120V, 60Hz electrical current from a GFI (ground, fused) socket.</p> <p>g) Damage or loss resulting from normal and customary wear and tear, such as gloss reduction, scratching or fading over time due to use, cleaning practices or water or atmospheric conditions, including but not limited to, the use of bleach, alkali, acid cleaners, dry (powder) cleaners or any other abrasive cleaners or the use of metal or nylon scrubbers.</p>			
<p>Executive standard: CONFORMS TO UL STD. 1431/UL STD. 1591 ASME A112.4.2-2021</p> <p>Warranty period: within three years from the purchase date</p>			

- Due to the constant improvement about our products, we will keep the final interpretation of products change.
- If the products you bought exist differences from the instruction, please in kind prevail.



NOTE: This equipment has been tested and found to comply with the limits for a Class B digital device, pursuant to Part 15 of the FCC Rules. These limits are designed to provide reasonable protection against harmful interference in a residential installation. This equipment generates uses

and can radiate radio frequency energy and, if not installed and used in accordance with the instructions, may cause harmful interference to radio communications.

However, there is no guarantee that interference will not occur in a particular installation. If this equipment does cause harmful interference to radio or television reception, which can be determined by turning the equipment off and on, the user is encouraged to try to correct the interference by one or more of the following measures:

- Reorient or relocate the receiving antenna.
- Increase the separation between the equipment and receiver.
- Connect the equipment into an outlet on a circuit different from that to which the receiver is connected.
- Consult the dealer or an experienced radio/TV technician for help.

Made in China
52200000-01 V1.0

FCC Caution :

This device complies with part 15 of the FCC Rules. Operation is subject to the following two conditions: (1) This device may not cause harmful interference, and (2)

this device must accept any interference received, including interference that may cause undesired operation.

Any Changes or modifications not expressly approved by the party responsible for

compliance could void the user's authority to operate the equipment.

Note: This equipment has been tested and found to comply with the limits for a Class

B digital device, pursuant to part 15 of the FCC Rules. These limits are designed to provide reasonable protection against harmful interference in a residential installation.

This equipment generates uses and can radiate radio frequency energy and, if not installed and used in accordance with the instructions, may cause harmful interference

to radio communications. However, there is no guarantee that interference will not

occur in a particular installation. If this equipment does cause harmful interference to

radio or television reception, which can be determined by turning the equipment off

and on, the user is encouraged to try to correct the interference by one or more of the

following measures:

- Reorient or relocate the receiving antenna.

- Increase the separation between the equipment and receiver.

- Connect the equipment into an outlet on a circuit different from that to which the

receiver is connected.

- Consult the dealer or an experienced radio/TV technician for help.

The device has been evaluated to meet general RF exposure requirement. The device

can be used in portable exposure condition without restriction