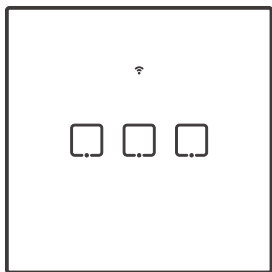
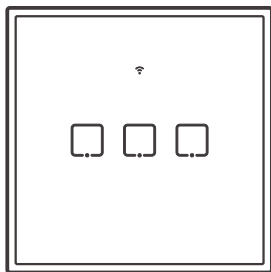




User manual V1.3



T0/T1

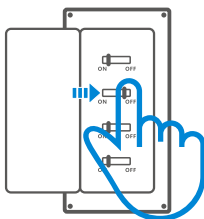


T2/T3

Wi-Fi Smart Wall Switch

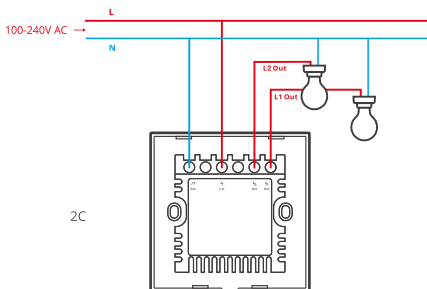
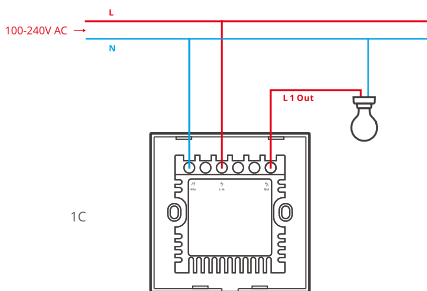
使用说明

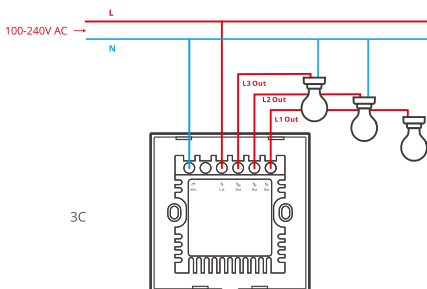
1. 断电



⚠ 设备安装、故障维修请由专业资质电工操作。切勿在设备通电时进行接线操作或触碰到接线端子, 以免发生触电危险!

2. 接线

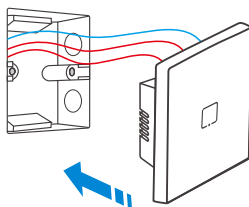




❗ 确保零火线接入无误。

❗ 为确保电气安装的安全, 必须在触摸开关前面安装符合国家安全标准额定电流为 2A(1路)/4A(2路)/6A(3路))的微型断路器 (MCB) 或漏电保护断路器 (RCBO)。

3. 设备安装

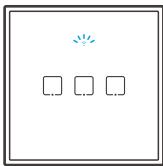


4. 下载“易微联”APP



Android™ & iOS

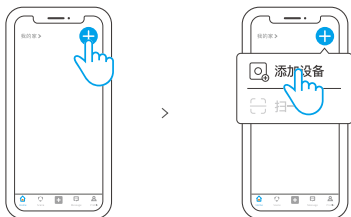
5. 上电



通电后，设备首次使用，默认进入快速配网模式。Wi-Fi指示灯呈“两短一长闪烁”。

⚠ 三分钟内没有进行配网，设备将退出快速模式模式。如需再次进入，长按配对按钮5秒直到Wi-Fi指示灯呈两短一长闪烁即可。

5. 添加设备



点击“+”，选择“添加设备”，再根据app提示进行操作。

兼容模式

如使用快速添加模式配网失败，请使用“兼容模式”进行配对。

- 1 长按配对按钮5秒直到Wi-Fi指示灯呈“两短一长闪烁”状态，松开。再次长按配对按钮5秒直到Wi-Fi指示灯呈“快闪”状态，此时设备进入兼容模式。
- 2 点击“+”，选择“添加设备”，再根据app提示进行操作。

RF遥控配对

设备支持使用 433.92MHz 遥控器控制开关，每路可独立学习遥控器按键，此功能属于本地近程无线遥控与Wi-Fi网络无关。

学习配对遥控器方法：

长触摸将要配对的通道按键3秒直到指示灯呈红色闪烁一下后松开，然后短按遥控器上要配对的按键，指示灯再次呈红色闪烁一下则表示配对成功。其它通道按键按照此方法学习配对即可。

清除遥控器配对方法：

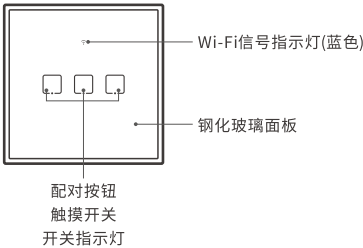
长触摸将要清除的通道按键5秒直到指示灯呈红色闪烁两下，再松开，然后短按遥控器上任意按键，指示灯呈红色闪烁一下则表示清码完成。其它通道按照此方法清码即可。

产品参数

| | |
|--------|---|
| 产品型号 | T0UK1C/T0UK2C/T0UK3C T1UK1C/T1UK2C/T1UK3C T2UK1C/T2UK2C/T2UK3C T3UK1C/T3UK2C/T3UK3C |
| 额定参数 | T0/T1/T2/T3(UK1C): 100-240V~ 50/60Hz 2A Max μ T0/T1/T2/T3(UK2C): 100-240V~ 50/60Hz 2A/gang 4A Total Max μ T0/T1/T2/T3(UK3C): 100-240V~ 50/60Hz 2A/gang 6A Total Max μ |
| LED灯负载 | 150W@110V(每通道), 300W@220V(每通道) |
| Wi-Fi | IEEE 802.11 b/g/n 2.4GHz |
| RF | 433.92MHz(仅接收) |
| 支持平台 | Android & iOS |
| 材 料 | PC+钢化玻璃 |
| 产品规格 | 86x86x35mm |

Ⓢ T0(UK1C/UK2C/UK3C)不支持433MHz遥控功能。

产品介绍



⚠ 设备重量<1Kg, 建议安装高度<2米。

Wi-Fi信号指示灯状态说明

| Wi-Fi指示灯状态 | 状态描述 |
|------------|---------------|
| 两短一长闪烁 | 快速配网模式 |
| 快速闪烁 | 兼容配网模式 |
| 常亮 | 设备已连接 |
| 快闪一下 | 找不到路由 |
| 快闪二下 | 连接上路由, 但没连上外网 |
| 快闪三下 | 升级中 |

产品特点

用您的智能手机在任何地方打开或关闭家里的设备，设置定时开/关、分享给您的家人一起控制等等。



远程控制



智能定时/延时



语音控制



分享功能



智能场景



433MHz控制



添加摄像头



触摸控制



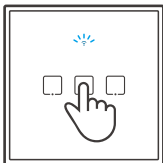
LED背光



局域网功能

恢复出厂设置

长按任意按钮5秒直到Wi-Fi指示灯呈两短一长闪烁再松开，此时设备重置成功，默认进入快速配网模式。



❗ 更换新的网络环境使用时，需要恢复出厂设置，再重新进行网络连接。

常见问题

问：设备添加成功后，显示离线，无法控制？

答：设备刚添加成功后，需要1-2分钟时间连接您的路由器并连网。如果长时间还是显示不在线，请根据Wi-Fi指示灯的状态来判断：

1. 蓝灯2秒快闪一下：说明设备没有连上您的Wi-Fi。

- ① 可能是Wi-Fi密码输入不正确。
- ② 可能是设备离您的路由器太远，信号太弱，或环境有干扰。请先将设备靠近路由器，如无改善，重新添加一遍。
- ③ 设备不能识别5G的Wi-Fi，请选择2.4G的Wi-Fi重新添加。
- ④ 检查您的路由器后台是否开启MAC地址过滤，如有，请关闭。

如果以上均尝试不能解决，请用一部手机开启个人热点，尝试重新添加。

2. 蓝灯2秒快闪两下：说明设备已连接到了Wi-Fi 但没有连上外网。

请确认您的Wi-Fi当前连接外网是否稳定、正常。如时好时坏，频繁出现这种双闪情况，说明您的网络不稳定，并非产品原因。

本产品的无线电发射设备型号核准代码印于产品机身
执行标准:GB/T 16915.2

产品中有害物质的名称及含量

| 部件名称 | 有害物质 | | | | | |
|-------|-----------|-----------|-----------|-----------------|---------------|-----------------|
| | 铅 (Pb) | 汞 (Hg) | 镉 (Cd) | 六价铬 (Cr{VI}) | 多溴联苯 (PBB) | 多溴二苯醚 (PBDE) |
| 塑料件 | o | o | o | o | o | o |
| 电子元器件 | x | o | o | o | o | o |
| 包装盒 | o | o | o | o | o | o |
| PCB板 | o | o | o | o | o | o |
| 五金件 | o | o | o | o | o | o |

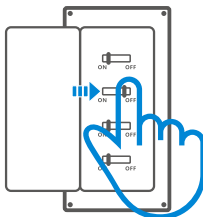
本表格依据SJ/T 11364 的规定编制:

o: 表示该有害物质在该部件所有均质材料中的含量均在GB/T 26572规定的限量要求以下;

x: 表示该有害物质至少在该部件的某一均质材料中的含量超出GB/T 26572规定的限量要求。

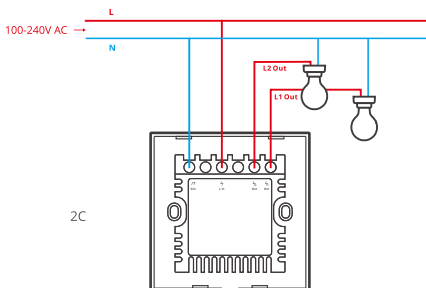
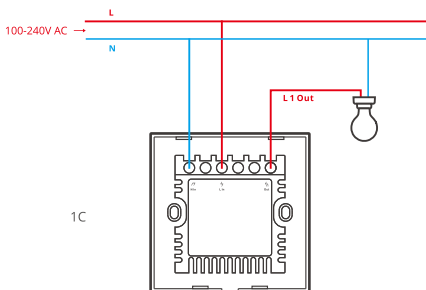
Operating Instruction

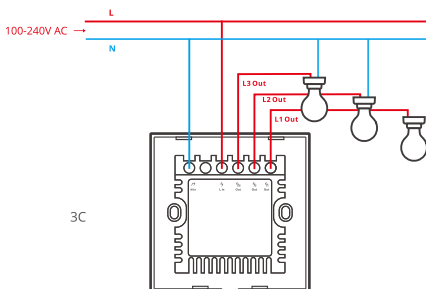
1. Power off



⚠ Please install and maintain the device by a professional electrician. To avoid electric shock hazard, do not operate any connection or contact the terminal connector while the device is powered on!

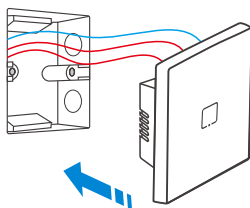
2. Wiring instruction





- ⚠ Make sure the neutral wire and live wire connection is correct.
- ⚠ To ensure the safety of your electrical installation, it's essential either a Miniature Circuit Breaker (MCB) or a Residual Current Operated Circuit Breaker (RCBO) with an electrical rating of 2A(1gang)/4A(2gang)/6A(3gang) has been installed before the switch.

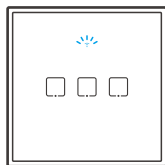
3. Equipment Installation



4. Download the eWeLink APP



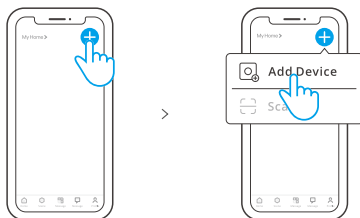
5. Power on



After powering on, the device will enter the quick pairing mode during the first use. The Wi-Fi LED indicator changes in a cycle of two short and one long flash and release.

- ⚠ The device will exit the quick pairing mode if not paired within 3mins. If you want to enter this mode, please long press any configuration button for about 5s until the Wi-Fi LED indicator changes in a cycle of two short and one long flash and release.

6. Add the device



Tap “+” and select “Add Device”, then operate following the prompt on the APP.

Compatible Pairing Mode

If you fail to enter Quick Pairing Mode, please try “Compatible Pairing Mode” to pair.

- 1 Long press Pairing button for 5s until the Wi-Fi LED indicator changes in a cycle of two short flashes and one long flash and release. Long press Pairing button for 5s again until the Wi-Fi LED indicator flashes quickly. Then, the device enters Compatible Pairing Mode.
- 2 Tap “+” and select “Add Device”, then operate following the prompt on the APP.

Pairing and Clearing with RF Remote Controller

The switch supports the remote controller with 433.92MHz frequency brand to turn on/off, and each channel can learn it independently, which is local short-range wireless control not Wi-Fi control.

Pairing Method:

Long press the touch button you want to pair for 3s until the indicator flashes “red” and release, then short press the corresponding button on the RF remote controller and you will see the indicator flashes “red” again after successful pairing. Other buttons can be paired through this method.

Clearing Method:

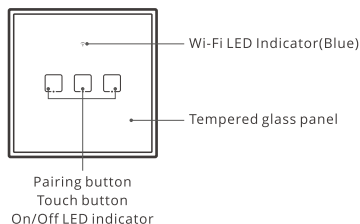
Long press the touch button you want to clear for 5s until the indicator light flashes “red” twice and release, then short press any button on the RF remote controller and you will see the indicator flashes “red” again after successful clearing. Other buttons can be cleared through this method.

Specifications

| | |
|-------------------|---|
| Model | T0UK1C/T0UK2C/T0UK3C T1UK1C/T1UK2C/T1UK3C T2UK1C/T2UK2C/T2UK3C T3UK1C/T3UK2C/T3UK3C |
| Rating | T0/T1/T2/T3(UK1C): 100-240V~ 50/60Hz 2A Max μ T0/T1/T2/T3(UK2C): 100-240V~ 50/60Hz 2A/gang 4A Total Max μ T0/T1/T2/T3(UK3C): 100-240V~ 50/60Hz 2A/gang 6A Total Max μ |
| LED load | 150W@110V(per channel) , 300W@220V(per channel) |
| Wi-Fi | IEEE 802.11 b/g/n 2.4GHz |
| RF | 433.92MHz (Receive only) |
| Operating systems | Android & iOS |
| Materials | PC +tempered glass panel |
| Dimension | 86x86x35mm |

⚠ T0(UK1C/UK2C/UK3C)does not support the remote controller with 433.92MHz.

Product Introduction



- ⚠ The device weight is less than 1 kg.
The installation height of less than 2 m is recommended.

Wi-Fi LED indicator status instruction

| Wi-Fi LED indicator status | Status instruction |
|----------------------------------|--|
| Flashes (one long and two short) | Quick Pairing Mode |
| Flashes quickly | Compatible Pairing Mode |
| Keeps on | Device is connected successfully |
| Flashes quickly once | Unable to discover the router |
| Flashes quickly twice | Connect to the router but fail to connect to Wi-Fi |
| Flashes quickly three times | Upgrading |

Features

Turn on/off the light or fan from anywhere, schedule it power on/off and share it with your family to control together.



Remote Control



Single/Countdown
Timing



Voice Control



Share Control



Smart Scene



433MHz
Remote Control



Camera Feature



Touch Control



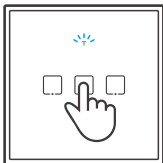
LED Backlight



LAN Control

Factory Reset

Long press any button you desired to pair for about 5s until the Wi-Fi LED indicator changes in a cycle of two short and one long flash and release, then the reset is successful. The device enters quick pairing mode.



- ⓘ Please reset the switch to factory defaults if you want to use other Wi-Fi networks, then reconnect the network.

Common Problems

Q: Why my device stays “Offline”?

A: The newly added device needs 1 – 2mins to connect Wi-Fi and network. If it stays offline for a long time, please judge these problems by the blue Wi-Fi indicator status:

1. The blue Wi-Fi indicator quickly flashes once per second, which means that the switch failed to connect your Wi-Fi:
 - ① Maybe you have entered a wrong Wi-Fi password.
 - ② Maybe there's too much distance between the switch your router or the environment causes interference, consider getting close to the router. If failed, please add it again.
 - ③ The 5G Wi-Fi network is not supported and only supports the 2.4GHz wireless network.
 - ④ Maybe the MAC address filtering is open. Please turn it off.

If none of the above methods solved the problem, you can open the mobile datanetwork on your phone to create a Wi-Fi hotspot, then add the device again.

2. Blue indicator quickly flashes twice per second, which means your device has connected to Wi-Fi but failed to connect to the server.

Ensure steady enough network. If double flash occurs frequently, which means you access an unsteady network, not a product problem. If thenetwork is normal, try to turn off the power to restart the switch.

| Scatola | Scatola | Manuale | Borsa |
|---|---------|---------|----------|
| PAP 20 | PAP 21 | PAP 22 | LDPE 4 |
| Carta | Carta | Carta | Plastica |
| RACCOLTA DIFFERENZIATA | | | |
| Verifica le disposizioni del tuo Comune. Separa le componenti e conferiscile in modo corretto. | | | |

SAR Warning

Under normal use of condition, this equipment should be kept a separation distance of at least 20 cm between the antenna and the body of the user.

Dans des conditions normales d'utilisation, cet équipement doit être maintenu à une distance d'au moins 20 cm entre l'antenne et le corps de l'utilisateur.

EU Declaration of Conformity

Hereby, Shenzhen Sonoff Technologies Co., Ltd. declares that the radio equipment type T0UK1C/T0UK2C/T0UK3C/T1UK1C/T1UK2C/T1UK3C/T2UK1C/T2UK2C/T2UK3C/T3UK1C/T3UK2C/T3UK3C is in compliance with Directive 2014/53/EU. The full text of the EU declaration of conformity is available at the following internet address:

<https://sonoff.tech/compliance/>

WEEE Disposal and Recycling Information



All products bearing this symbol are waste electrical and electronic equipment (WEEE as in directive 2012/19/EU) which should not be mixed with unsorted household waste. Instead, you should protect human health and the environment by handing over your waste equipment to a designated collection point for the recycling of waste electrical and electronic equipment, appointed by the government or local authorities. Correct disposal and recycling will help prevent potential negative consequences to the environment and human health. Please contact the installer or local authorities for more information about the location as well as terms and conditions of such collection points.

For CE Frequency

EU Operating Frequency Range:

802.11 b/g/n20: 2412-2472MHz,

SRD: 433.92MHz (Receive Only for T1UK1C/T1UK2C/T1UK3C/T2UK1C/T2UK2C/T2UK3C/T3UK1C/T3UK2C/T3UK3C)

EU Output Power:

Wi-Fi 2.4G≤20dBm



Shenzhen Sonoff Technologies Co., Ltd.

1001, BLDG8, Lianhua Industrial Park, shenzhen, GD, China
ZIP code: 518000

Website: sonoff.tech

MADE IN CHINA

