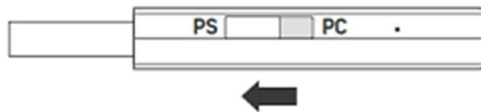


Stealth 700 Gen 2 MAX For PlayStation - PlayStation Setup/Pairing

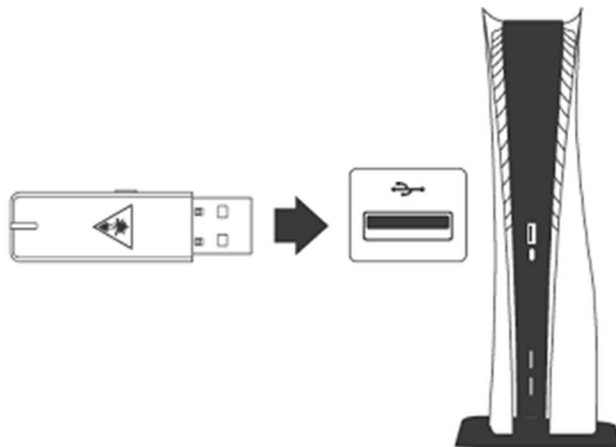
The Stealth 700 Gen 2 MAX headset can be used with a PlayStation 4 or PlayStation 5 console, while in the PS mode. While in the PS Mode, the headset can also be used with a docked Nintendo Switch; for more information on Nintendo Switch setup, please click [here](#). For instructions on PC Mode Setup, please click [here](#).

To set up your Stealth 700 Gen 2 MAX For PlayStation headset for use with a PlayStation console, please do the following:

1. Put the transmitter into the “PS” mode.



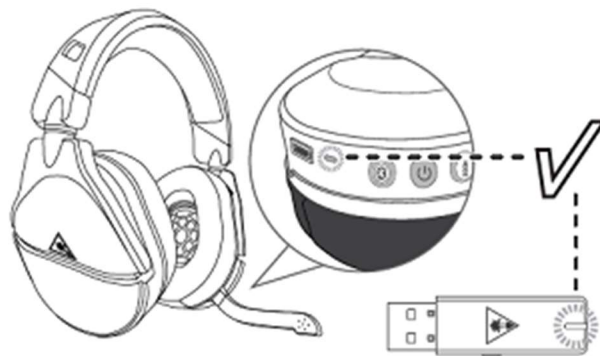
2. Connect the transmitter to the USB port. If you are using this headset with a PS5, it is recommended to insert the transmitter into the USB port at the front of the PS5 console.



3. Power the headset on.



4. Wait for the headset and transmitter to pair.



5. Configure the settings, as follows:
 1. Go to **Settings >> Sound >> Audio Output >> Output Device**
 - Select **Stealth 700 Gen 2 MAX** for **Output Device**
 - Set **Output to Headphones** to **All Audio**
 - Set **Volume Control (headphones)** level to **Maximum**
 2. Adjust your microphone levels by going to **Settings >> Sound >> Microphone >> Adjust Mic Level >> Microphone Level**
 3. On **PS5**, enable **3D Audio** to enhance the audio through the headset, and then go to **Adjust 3D Audio Profile** to select the best profile option for your game.