

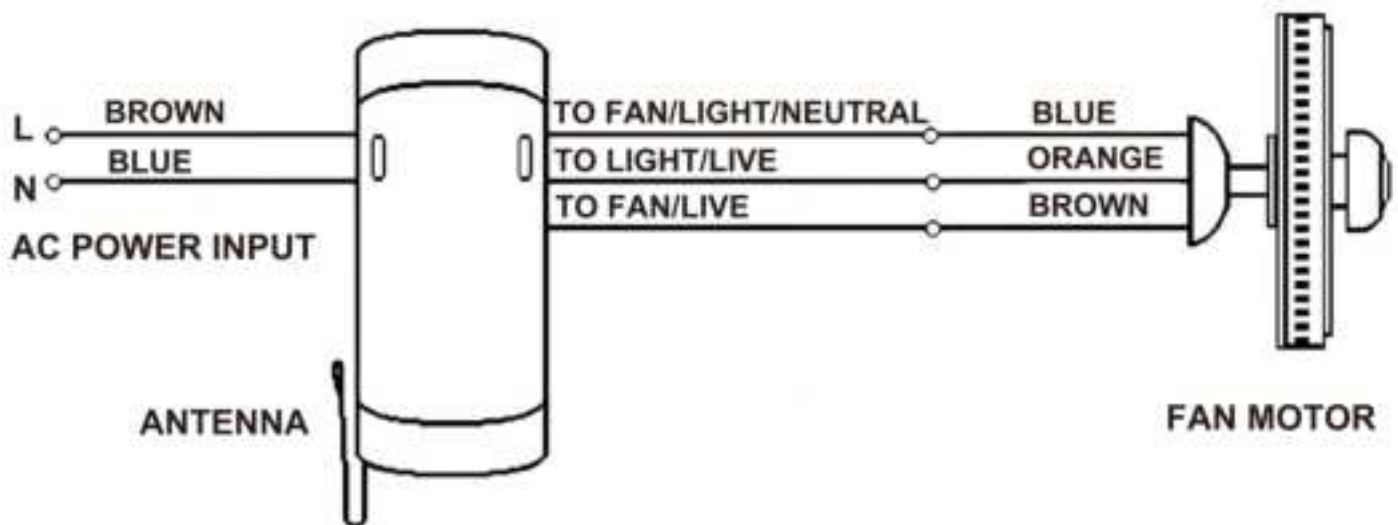
Ceiling Fan Remote Control instruction

FOR YOUR SAFETY:

- 1 Install receiver into the ceiling fan canopy to ensure proper protection.
- 2 This unit is to be used for the control of the ceiling fan only, and to be connected to 120V 60Hz power supply only, do not exceed rated power input specification.
- 3 Do not install in conjunction with a solid state dimmer.
- 4 Do not install in damp locations. Never immerse in water or allow either component to become wet.
- 5 This unit is for indoor use only.
- 6 Do not modify this unit in any manner.
- 7 Do not pull or cut the leads on the receiver.
- 8 Take care with your unit and take care not to drop the remote or receiver.
- 9 The battery within this unit should be replaced at least every year to avoid leakage and subsequent damage.
- 10 IMPORTANT: DO NOT DISPOSE OF BATTERY IN FIRE.
- 11 WARNING: THE REMOTE CONTROL RECEIVER MUST BE INSTALLED INTO THE CEILING FAN HOUSING

RECEIVER WIRING CONNECTION:

Connect the remote control in accordance with the following wiring diagram through hard wiring.



RECEIVER INSTALLATION:

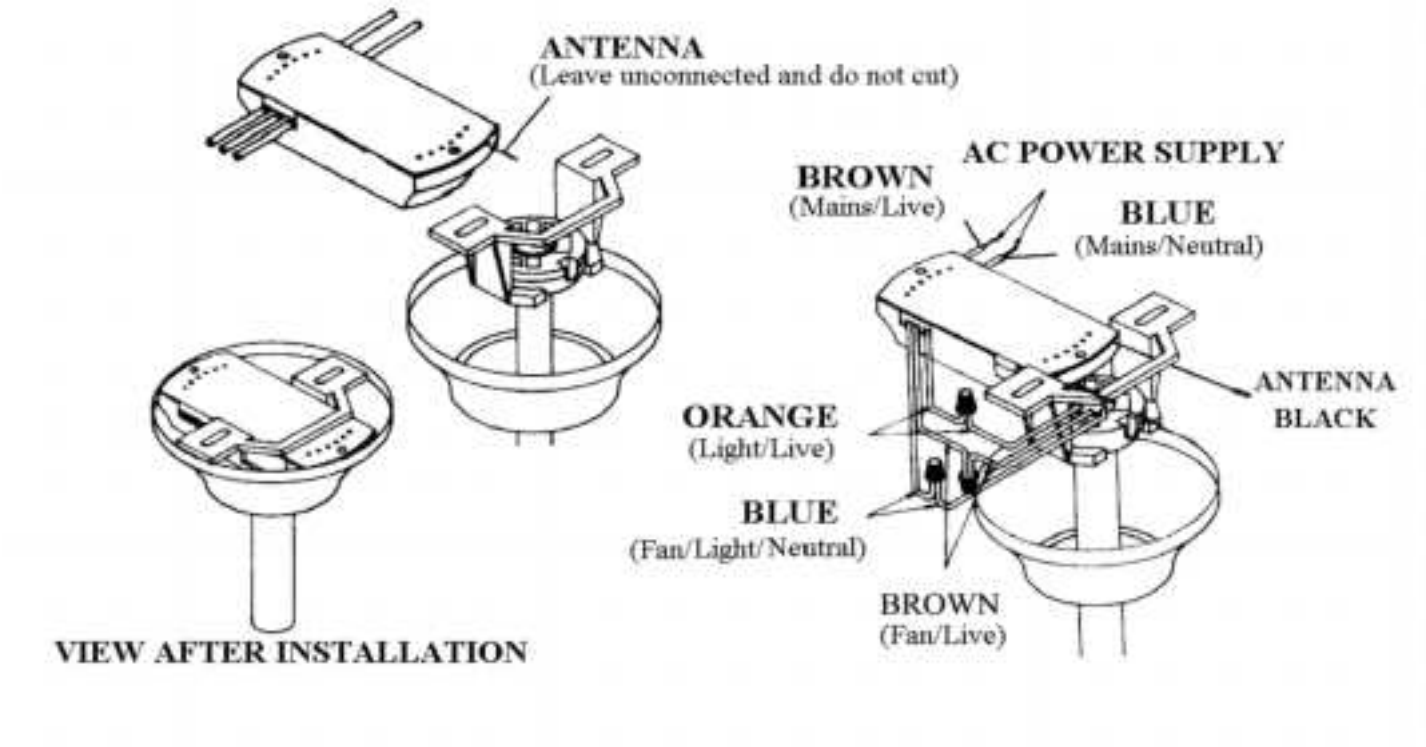
IMPORTANT:

WHEN INSTALLING CEILING FAN REMOTE CONTROL ANY EXISTING CONTROLLER MUST BE BYPASSED OR REMOVED.

REMOTE CONTROL RECEIVER IS INTENDED FOR USE ONLY WITH CEILING FANS WITH ALLOWANCE FOR INSTALLATION OF REMOTE RECEIVER INTO FAN CANOPY






1. Disconnect the power supply before installation.
2. Connect the power input wires marked "AC power input L" (brown) and "AC power input N" (blue) on the remote control receiver to the live and neutral connections of the power supply.
3. Connect the blue wire of the remote control receiver to the neutral wire of the ceiling fan, the brown wire to the motor wire, and the orange wire to the light wire.

- 4.After the fan receiver is powered on, the receiver and remote control will be automatically paired, and the remote control function can be used normally. If the remote control cannot be used properly, please follow the following steps:
Keep pressing the "fan on/off"button on the remote control for more than 3 seconds to pair the remote control with the receiver. After successful pairing, the fan light will flash twice as a reminder signal. After re-pairing, the functionality of the original remote control will be disabled.
5. Insert the receiver into the suspension bracket.Then you can lift the fan cover to hide the receiver and bracket.Note: The receiver must be installed in the fan cover as shown in the figure. The receiver is not designed to operate in any other way.



The following are the parameters and function descriptions of the fan controller:

Receiver device	Input voltage	AC 120V±10% 50/60Hz;	Remote control communication frequency	433 MHz
	Effective Remote control distance	>18M	static power consumption	≤0.5W
	Adaptive motor parameters	AC 120V±10% 50/60Hz; 200W(Max)	Adaptive lamp panel parameters	160W (Max), adjustable light intensity (brightness adjustment Range:1%~100%),dimming method: stepless dimming
	Battery specifications	AAA	Receiver housing fire rating UL 94-VO	
	Safety protection	When the total power exceeds 900AV, the non-recoverable fuse will be disconnected. Temperature protection device; when the temperature is too high, the power supply will be automatically disconnected, and when the temperature drops, the power supply will be automatically turned on.		

	pairing method	After the fan receiver is powered on, the receiver and remote control will be automatically paired, and the remote control function can be used normally. If the remote control cannot be used properly, please follow the following steps: Keep pressing the "fan on/off" button on the remote control for more than 3 seconds to pair the remote control with the receiver. After successful pairing, the fan light will flash twice as a reminder signal. After re-pairing, the functionality of the original remote control will be disabled.	
	Speed regulation mode	Capacitance speed regulation: HI)3 gear (high speed) MED)2 gear (medium speed) LOW)1 gear (low speed gear)	
	Environment of use	Environment temperature: 0~45℃, humidity: 10%~90%	
remote control		Fan Motor on/off button	Just press this key to turn on/off the fan motor function.
		Light on/off button; Light delayed off button	a) Just press this button to turn on/off the light. b) keep pressing this key for 2 seconds, the light will be turned off after 30 seconds.
		Lamp brightness increase key	Keep pressing the key this key to increase the brightness with stepless dimming. And shortly press this key to increase the brightness with graded dimming.
		Lamp brightness decrease key	Keep pressing this key to reduce the brightness with stepless dimming. And shortly press this key to reduce the brightness with graded dimming.
		Fan timing key	Each time you press this key, the fan will correspond to the specified timing time, which is 1, 2, 4, and 8 hours in cycles.



Select
the gear
Key for
fan speed

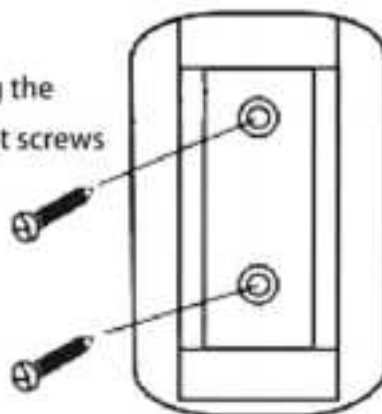
Capacitance speed regulation:
High speed gear HI)3 gear,
Med speed gear MED)2 gear,
Low speed gear LOW)1 gear,



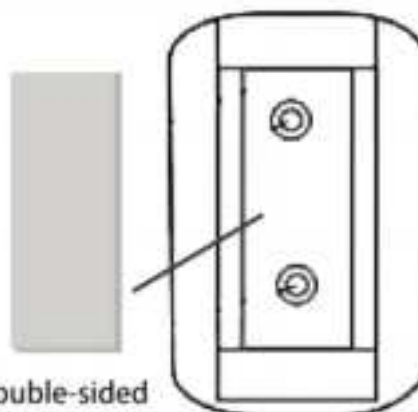
The remote control display screen will display the corresponding function of the button you press. For saving the electricity, the remote control display screen will be turned off automatically after 30 seconds without any operations. When you press any button on the remote control, the display screen will be automatically activated and display the corresponding function.



Install using the
provided set screws



Use the double-sided
tape provided for fixing



This device complies with part 15 of the FCC Rules. Operation is subject to the following two conditions: (1) this device may not cause harmful interference, and (2) this device must accept any interference received, including interference that may cause undesired operation.

Any changes or modifications not expressly approved by the party responsible for compliance could void the user's authority to operate the equipment.

NOTE: This equipment has been tested and found to comply with the limits for a Class B digital device, pursuant to Part 15 of the FCC Rules. These limits are designed to provide reasonable protection against harmful interference in a residential installation. This equipment generates, uses and can radiate radio frequency energy and, if not installed and used in accordance with the instructions, may cause harmful interference to radio communications. However, there is no guarantee that interference will not occur in a particular installation.

If this equipment does cause harmful interference to radio or television reception, which can be determined by turning the equipment off and on, the user is encouraged to try to correct the interference by one or more of the following measures:

- Reorient or relocate the receiving antenna.
- Increase the separation between the equipment and receiver.
- Connect the equipment into an outlet on a circuit different from that to which the receiver is connected.
- Consult the dealer or an experienced radio/TV technician for help.

The device has been evaluated to meet general RF exposure requirement. The device can be used in portable exposure condition without restriction