



Nr 9972-210310

Manual

Combi winch 2103





Thank you for buying a SAHLINS product

We want you to be satisfied with your 2042 power unit, and this Instruction Manual has been written to help you handle and maintain it safely. Please read it carefully before operating the machine, so that you are aware of the safety measures you need to take when you use it.

General.

In designing and manufacturing the equipment, great care has been taken to avoid health and safety risks.

There are risks involved in cable-laying, and to avoid these, it is important:

- to study and follow the instructions
- to train personnel continuously in operation and safety
- to provide suitable equipment and tools
- that the owner and management take responsibility for ensuring that effective safety programs and instructions are produced and are followed by all personnel.

Our instructions contain important information which all users must be familiar with and understand before using the equipment. For the safety of yourself and others, please pay particular attention to the points/sections which have the following headings.

WARNING

Important information which warns you of a risk of serious injury or danger to life, if the instruction is not followed.

CAUTION

Important information which describes how to prevent damage to the machine and equipment, or how to avoid a situation which may cause personal injury.

REMARKS

Advisory information regarding the operation, care and maintenance of machinery and equipment



Contents

Safety regulations	4
Introduction	6
Technical specifications	6
Handling	7
Setting up the machine	7
Fitting the drum	8
Fitting the drum do the outlet shaft of the capstanwheel.....	8
Fitting the wire rope on capstanwheels	9
Operation	10
Start / stop of engine	10
Direction	10
Force	10
Setting of pulling force	10
Setting of speed	10
Maintenance	11
Honda engine:	11
Hydraulic system	11
Hydraulic tank:	11
Winch unit	11
Drive chain	11
Friction coupling	12
Friction brake	12
Chassis	13
Spare parts	14
Accessories	25
Accessories overhead line winch	25
Accessories underground cable winch	26
Other accessories	26



Safety regulations.

General safety measures

Safety for personnel

1. Read and familiarise yourself with all warnings, precautionary measures, and instructions in the operating and care manual, and read and learn the significance of all signs which are attached to and located around the equipment. If there is any doubt, ensure that all questions are answered before work begins.
2. Do not work with machines or equipment if you are under the influence of alcohol, strong medicines, tranquilisers or other drugs which may make you less alert, or which could affect your judgement.
3. Observe safety measures to avoid hair or loose articles of clothing becoming trapped in moving parts or control equipment.
4. If possible, protective gloves should be worn at all times to protect hands and fingers against cuts and abrasions, burns and solvents.
5. Always use eye protection if there is a risk of flying particles, splinters, dust or other objects which may injure the eyes, and where the safety instructions require it. Take care of your eyes!
6. Always use a safety helmet and protective footwear when the work requires it.
7. Use hearing protection at all times in working areas with high noise levels.
8. Do not carry out any unnecessary lifting which may cause back injury, use lifting equipment instead. Use your legs not your back when you are forced to lift by yourself.

Safety at work

9. Keep the working area clean and free from accumulations of material.
10. Do not permit unauthorized personnel to remain in or around the working area.
11. Surfaces which are touched by hands or feet must be kept clean, dry and free from oil or grease.
12. Store parts and tools in the intended place when they are not in use.
13. Carry out an inspection of warning equipment in the work area, and ensure that each individual unit functions satisfactorily before starting the equipment.
14. Do not stand under, or permit anyone else to stand under, the equipment when it is raised or suspended.
15. Find out the weight limits of ropes and lifting equipment, and the free movement which these require.
16. Pay attention to conditions which may obstruct visibility in and around the working area.

Safety of the equipment.

17. Warning, prohibitory and information signs must not be concealed, changed, damaged or removed.
18. Never climb onto the equipment during operation, or when it is moving or being lifted. Do not permit anyone else to do this.
19. Check the components in the equipment before each operating period, to ensure that no parts are damaged or are suspected of being damaged. Repair or replace damaged components, or any which are suspected of damage. Repair or replace damaged parts before starting and operating the equipment. Use only genuine SAHLINS parts.
20. Before starting and operating the equipment, it is essential to ensure that no persons, animals, tools, components or other foreign objects are in, on, under or around it. Check that all protective and safety equipment is correctly installed and in satisfactory condition.
21. Ensure before starting the machine that all staff and visitors in the work area have been informed that the equipment is about to be started. Use suitable warning equipment to warn them.
22. Do not permit untrained personnel to start or run any equipment without the supervision of a trained operator.
23. Never leave the equipment unattended during operation.



24. Watch out when starting and operating the equipment for any defective measuring instruments, visible defects, smells or unusual sounds which may give a warning of a fault. Stop the equipment immediately if a fault is suspected.

25. Carry out all inspections, maintenance, lubrication and adjustments with great care, and in accordance with the manufacturer's recommendations. The machine must always be stopped during maintenance work.

Safety regarding flammable and environmentally-hazardous substances.

26. Store flammable, combustible and dangerous substances in a safe place and in the appropriate containers. These must be clearly marked in accordance with current regulations.

27. Do not permit smoking or open flames in the vicinity of fuel and oil tanks or other flammable regulations.

28. Shut down all engines when filling with oil and fuel. Follow the instructions and recommendations which apply to the handling of these substances.

29. Never start a diesel or petrol engine in a confined space unless it is properly ventilated. Dangerous gases can kill.

30. Do not use flammable and/or combustible substances, such as petrol, paraffin or diesel oil to clean components. Always use non-flammable solvents which are intended for cleaning.



Introduction

Multiwinch 2103

Multiwinch 2103 – a hydraulic driven, 2-speed, combined capstan and drumwinch with large capacity.
Used for overheadline- or underground cable pulling.
The machine is equipped with 2 capstan wheels and separate collectingdrum (see accessories)
For pulling overheadline especially ABC cable, a synthetic line is used, and a mechanical lockingdevice retains the load when you stop pulling.
For underground cablepulling, a steelwire is used.
Because of the capstanwheels you always have access to maximum pullingforce 1000kp.
The line can easily be wound on or off to the capstanwheels, which are open at the side.
The collectingdrum is also easy to change.
When changing old conductors the 2103 can be used as a drumwinch.
A splitdrum can be fitted to the shaft on the rear capstanwheel.
Drums with large amounts of pilot rope (max 1100m) can be used for pulling light conductors when the requirement of pullingforce is low.
The machine is fitted with a manual linespreader

Technical specifications

Pullingforce:	Max 500/1000 Kp
Pullingforce is regulated with a reliefvalve, value is shown on a gauge.	
Speed:	20/40 m/min (capstanwinch) max.140 m/min. (drumwinch)
Pilotrope (overheadline) :	500/1100m syntethic line 6-8mm
Steelwire (underground):	500m steelwire 5mm.
Drive:	Hydraulic with aircooled oiltank
Engine:	Four-stroke petrol engine 13 hp
Chassis:	Suspended wheelaxle, supportlegs, jockeywheel
Dimensions:	Length 2500 mm, width 1270 mm, height 1050 mm.
Weight:	260 kg (without drums).

Basic equipment:

- 13 hp, 4-stroke petrol engine (electric start)
- Gearbox
- 2 capstanwheels
- Dynamometer
- Reliefvalve (pullingforce regulation)
- Suspended wheelaxle
- Jockeywheel
- Supportlegs (2)
- 50mm ballcoupling
- Linespreader



Handling

Setting up the machine



- 1) Remove the machine from the towing hook.
 - 2) Wind the jockeywheel up as far as possible.
 - 3) Adjust the supportlegs to a suitable height and lock them.
 - 4) Wind the jockeywheel down so that the machine rests firmly on the supportlegs.
- If needed anchor the machine at the anchoringeye to a solid object.



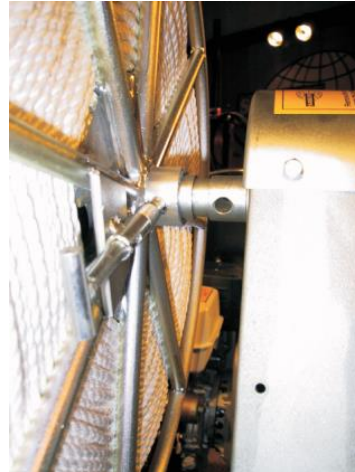


Fitting the drum

The collecting drum is equipped with a springcatch. Pull up the springcatch and fit the drum on the shaft. Make sure that the springcatch hits the hole on the shaft.

When pulling out line – fit the drum so that the springcatch hits the groove on the shaft.

This make it possible to pull the line directly from the drum.(not from the capstanwheels)



Fitting the drum do the outlet shaft of the capstanwheel

Run the winch so that the wide slot on the shaft points forward-upwards.

Fit the drum with the catch pulled in and turn the drumcoupling into the slot and turn so that the catch engages, lock the bearing cover to the shaftend with the excentric lockingdevice.

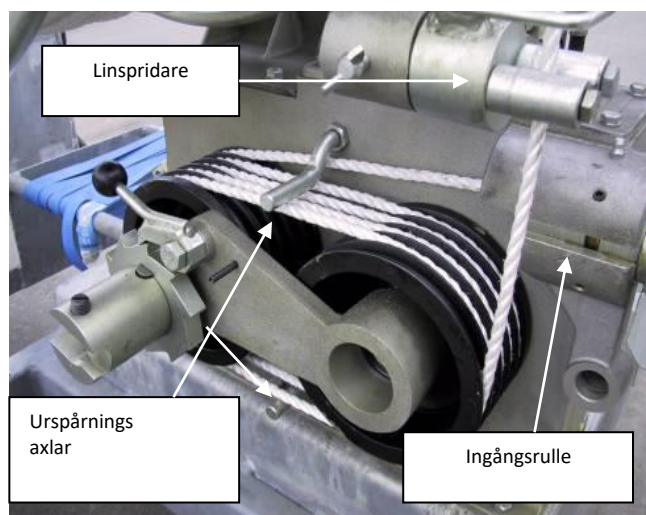
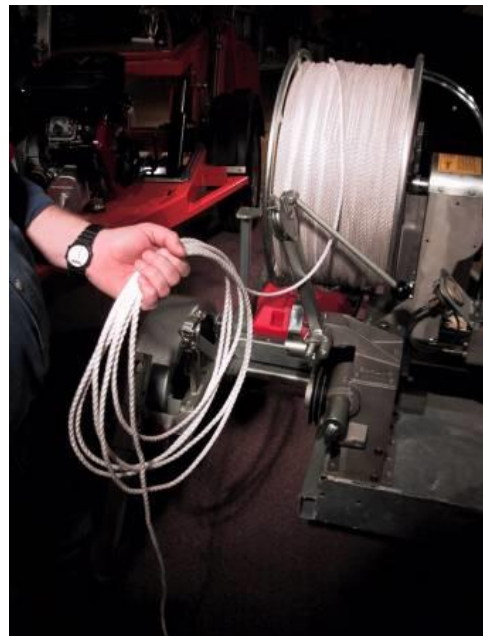




Fitting the wirerope on capstanwheels

Make five loops with the wirerope
Fit the last loop's outgoing rope in the inlet roller
and thread the rope around the inner groove of the rear
wheel, continue to the inner groove of the front wheel.
Wind the rope on all grooves and finish through
the linespreader up to the drum.

Caution! Make sure that the wirerope is accurate fitted in the grooves of the capstanwheels before winching starts.





Operation

Start / stop of engine

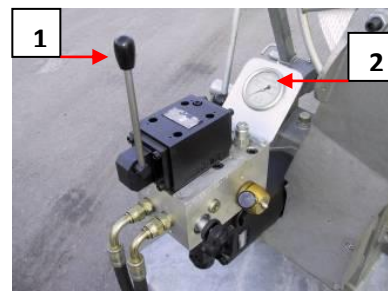
See manual for Honda GX 390

Direction

Operation forward / reverse is performed with control (1) on the winch unit.

Force

The machine is equipped with a dynamometer where you can read the pullinforce.



Setting of pullingforce

The pullingforce is set with a relief valve (3)

- 1) Turn the valve anticlockwise all the way
- 2) Pull the control (1) towards you to reel in.
- 3) Turn valve (1) until capstanwheels and drum starts to rotate.
- 4) Turn the valve (1) another 1-1,5 turn.

This means that the maximum pulling force will be just over what shows on the dynamometer.

If the wirerope for some reason get stuck the pullingforce will increase and reach the preset pullingforce

The valve will overflow and the winch stops.

This to prevent injuries on wirerope or poles.

Gradually the need pullingforce will increase, which means that the valve must be adjusted along the way.

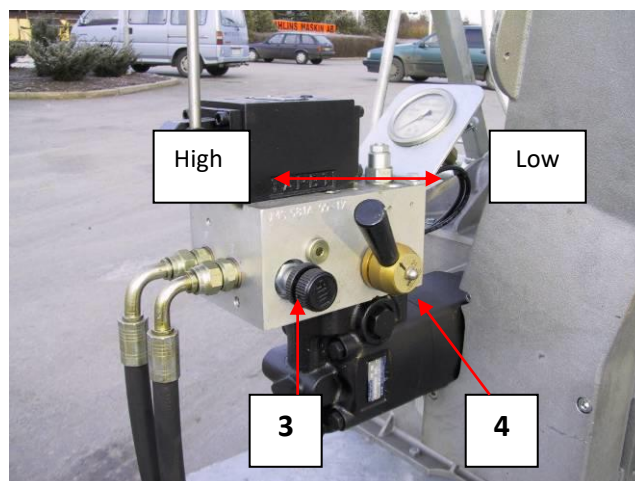
When the weight of the pulled load increases the winch will stop, turn the valve 1-1,5 turn until the pulling is finished.

Setting of speed

The speedcontrol (4) can be adjusted either when winching or during stop.

At low speed maximum pullingforce 1000kp can be reached.

At high speed maximum pullingforce 500kp can be reached.





Maintenance

Honda engine:

See manual for Honda GX 390

Hydraulic system

Hydraulic tank:

The oillevel shall be between min- and max- marking on the levelindicator.

Fill oil at the breatherplug on top of the tank.

The hydraulic fluid shall be analyzed or changed at least once a year.

Clean the tank if neccesary.

Hydraulic fluid: Shell Tellus T32 or equal.

Tankspace: approx. 9 litres.

Hydraulic oilfilter: 10my Change the filter after 200 hours, at least every 6 month.

The oilfilter shall always be changed when changing hydraulic fluid or at a major service of the hydraulic system.

The filter cartridge must under no circumstances be washed, since this can cause serious injuries of the system when re-using cartridges.

Always change to a new cartridge.

Check for leakage at controls and connections. Tighten connections if leakage should occure.

Winch unit

The oillevel in the winchhousing is checked at the upper oilplug of the frontgable.

If needed fill with gearboxoil SAE 90, fill at the breatherplug on the top of the winch.

Change the oil once a year approx. 3litres.

Lubricate the linespreader and the nosewheel with grease.

If needed lubricate the drivechain.

Open the friction coupling cover on top of the winch.

Make sure that the frictiondiscs don't become grasy.

Lubricate the drumshaft with grease

Check the wirerope regularly to ensure that it's not damaged.

Drivechain

The tension of the drivechain for the collectingdrum is adjusted with the tensioner (see picture)

Loosen the two bolts put a screwdriver and break until you get the right tension

Tighten the two bolts again.





Frictioncoupling

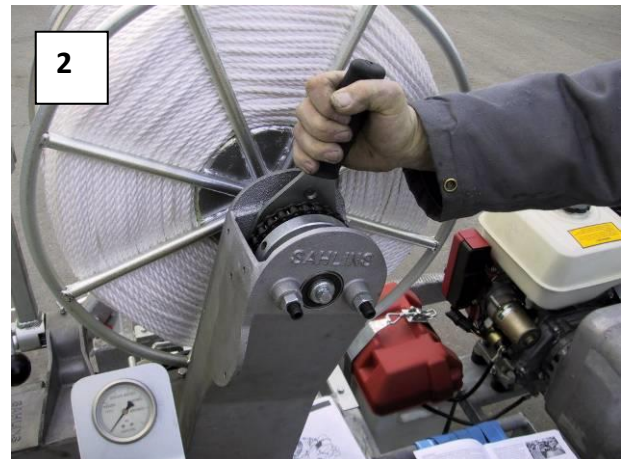
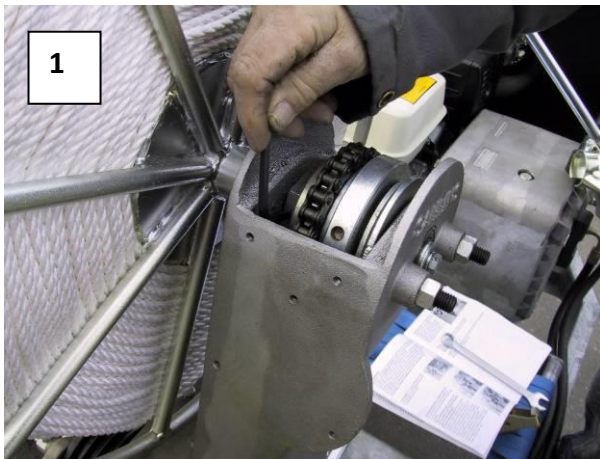
The frictioncoupling works to create tension between the collecting drum and capstanwheels.

To reach the coupling remove the topcover.

If the capstanwheels rotates without the wirerope is collected, the coupling is too loose.

The coupling may need adjustment:

Loosen the lockingscrews.(1)



Turn the nut with attached specialkey.(2)

Turn it bit by bit until the collectingdrum rotates with as much force it takes to get maximum pullingforce.

**Caution! Do not tighten the coupling too much
Damages on the winch may occur.**

Adjustments shall be performed with a full collectingdrum.

Frictionbrake

The frictionbrake that prevents the drum from Overrunning can be adjusted:

Loosen the two locknuts and adjust the screws.

Adjust equal on both screws to get the frictiondisc to maintain an even tension.

The adjustment is performed with a full drum.

Make sure that the drum doesn't rotates too sluggish and that it stops instantly when you stop winching.





Chassis

The chassis is galvanized and do not need any further treatment
Kontrollera regelbundet det främre stödhjulet och däcken.
Däcktryck 2,75 Bar.

General

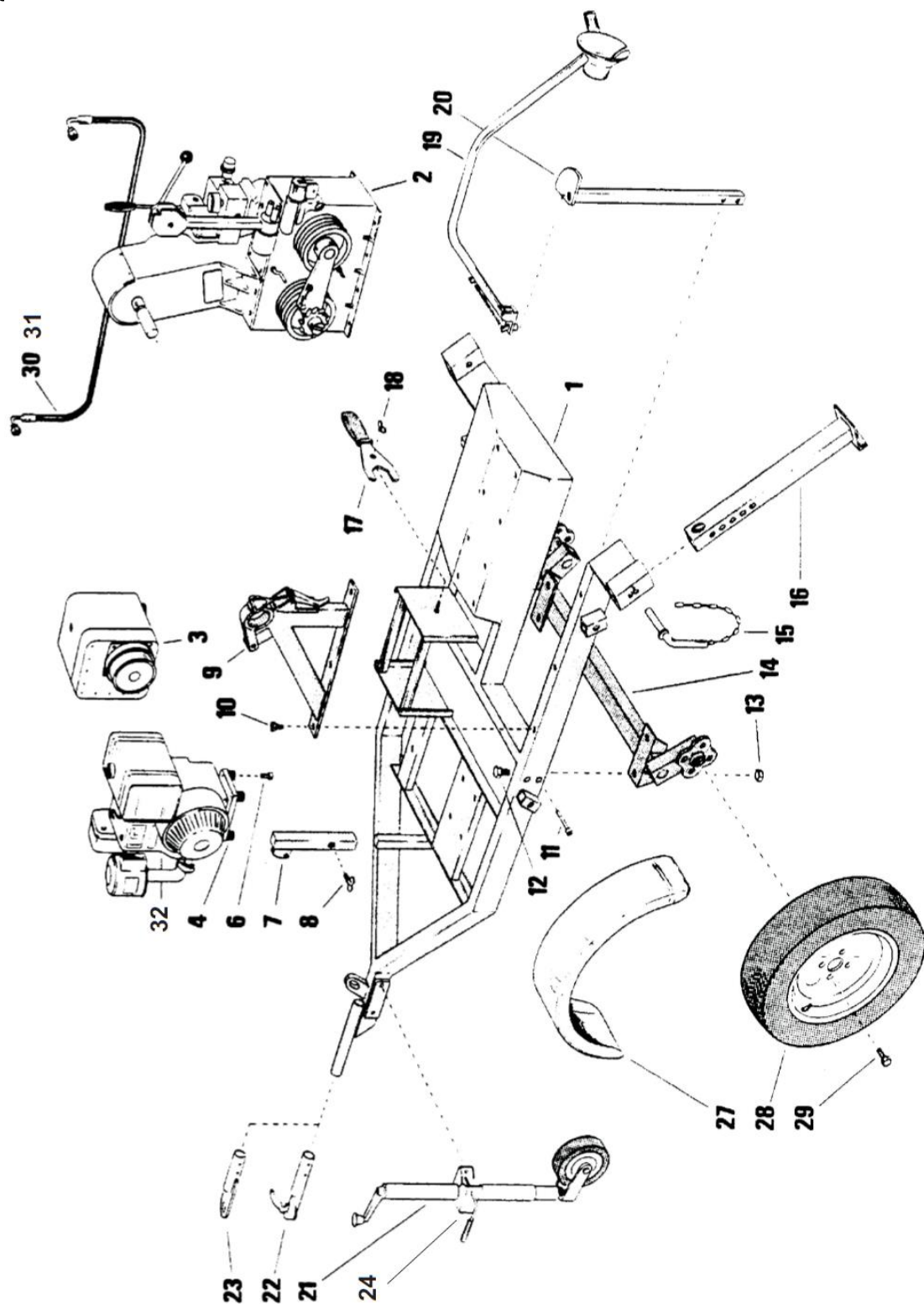
Lift the 2103-winch at the front anchoring eye and at the upper holes of the supportlegs.

Caution! Use approved lifting equipment

Weight approx. 260kg without drum

Spareparts

Chassis

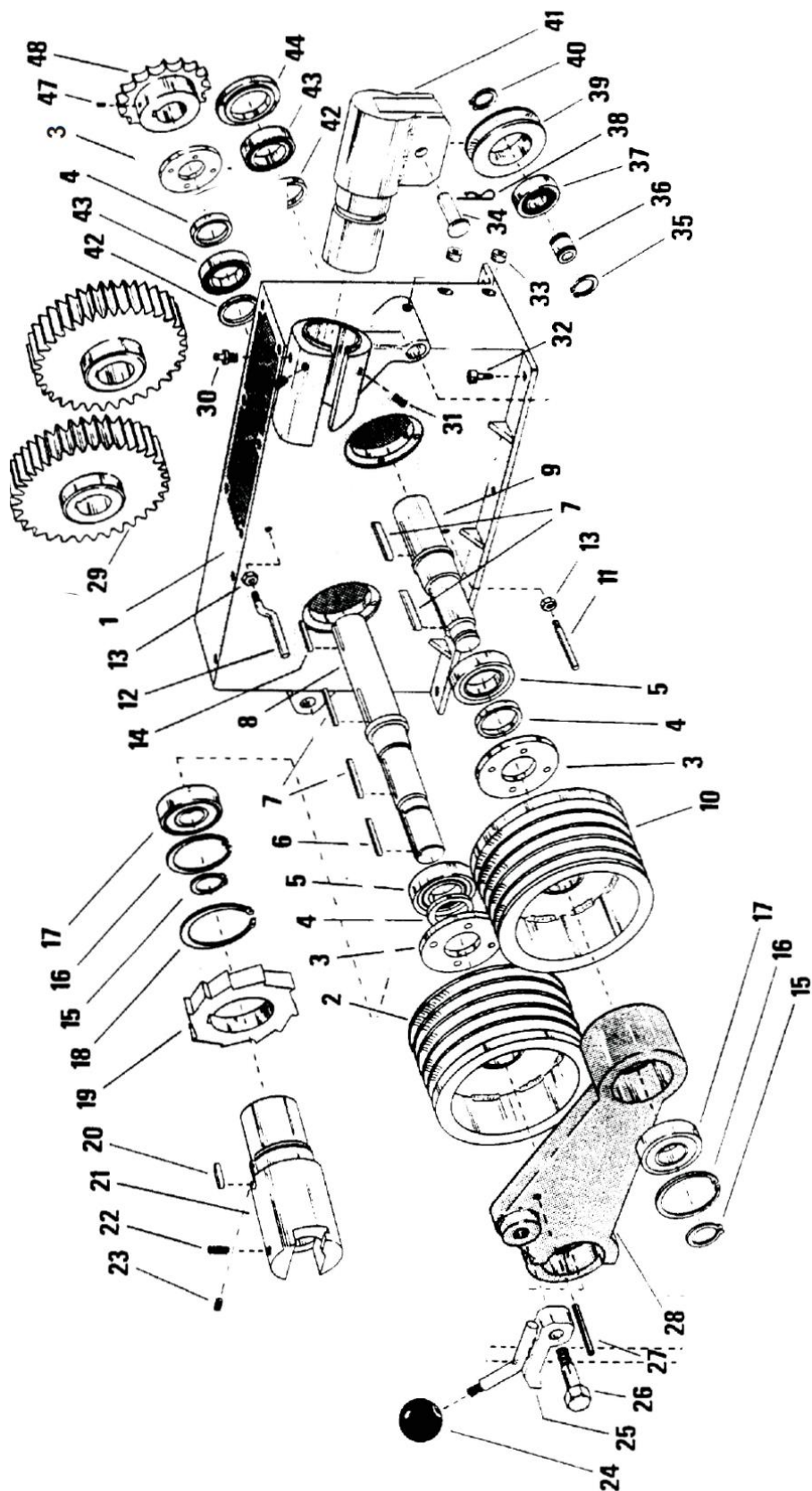




Sparepartlist Chassis ref to page 14

Ref.No.	Qty	Partnumber	Partname
1	1	2100-5011	Frame / Ram
2	1	See page 18	Winchunit / Vinschenhet
3	1	See page 20	Hydraulic tank
4	6	9503-001	Cushion /Motordämpare
5	1	3060-0021	Drum/trumma Ø530
5a	1	3060-0010	Drum/trumma Ø395
6	4	9631-08016	Screw M8x16
7	1	2100-0050	Drumstand / Trumhållare
8	1	9401-08016	Wingscrew
9	1	2100-0200	Drum support / Stödlager
10	3	9361-08020	Screw M8x20
11	2	9371-08080	Screw M8x80
12	4	9361-12040	Screw M12x40
13	4	9422-12	Locknut / Låsmutter
14	1	9580-002	Wheelshaft / Hjulaxel
15	2	2100-5009	Pin supportleg / Sprint stödben
16	2	2100-5010	Supportleg / Stödben
17	2	3060-0080	Friction clutch tool / Friktionskopplingsverktyg
18	1	9425-10	Wingnut M10
19	1	9809-010	Linespreader / Linspridare
20	1	2100-5040	Linespreaderattachment / Linspridarfäste
21	1	9583-001	Jockeywheel ass. / Stödhjul komplett
22	1	9582-007	Ballhead / Kulkoppling Ø50mm
23	1	2100-0030	Pullingeye / Dragögla
27	2	2100-5012	Mudguard / Stänkskärm
28	2	9581-007	Wheel / Hjul
29	8	9589-006	Wheelscrew / Hjulskruv
30	1	9631-314101	Hydraulic hose / Hydraulikslang
31	1	9631-314301	Hydraulic hose / Hydraulikslang
32	1	9602-0132	Engine / Motor Honda 13hp

Winch



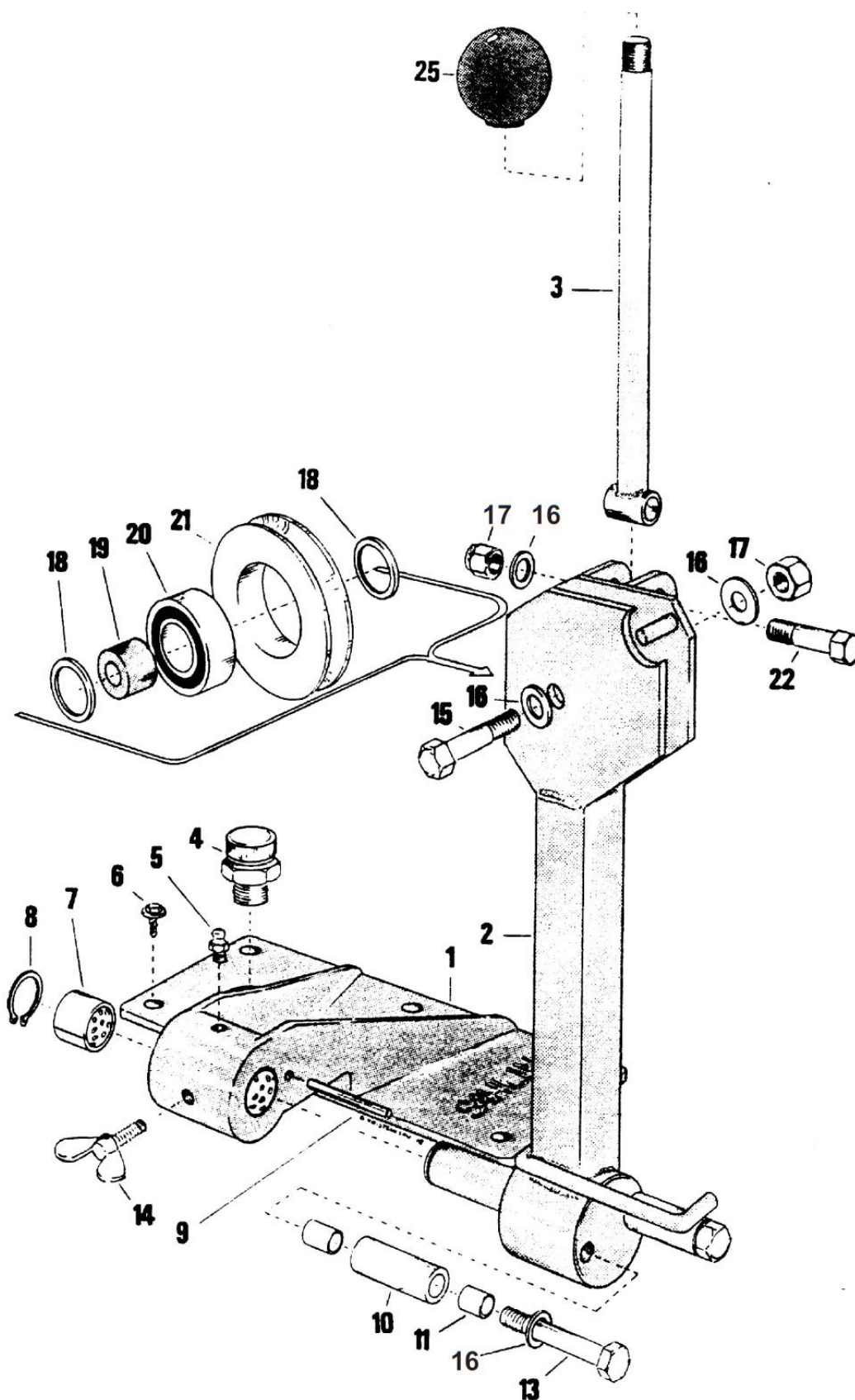


Sparepartlist Winch ref to page 16

Ref.No.	Qty	Partnumber	Partname
1	1	3060-5001	Winchhousing / Vinschhus
2	1	3062-5001	Bullwheel / Nockhjul
3	3	3060-5004	Bearinglid / Lagerlock
4	3	9462-30477	Sealing ring / Tätningsring
5	6	9201-6006-0	Ballbearing / Spårkullager 6006-0
6	1	9322-0840	Flat key / Plattkil 8x7x40 T
7	5	9321-0840	Flat key / Plattkil 8x7x40 R
8	1	3060-5005	Shaft Bullwheel / Axel nockhjul
9	1	3060-5006	Shaft Bullwheel / Axel nockhjul
10	1	3062-5002	Bullwheel / Nockhjul
11	1	3062-5003	Cablepin lower / Lintapp undre
12	1	3062-5004	Cablepin upper / Lintapp övre
13	2	9424-12	Nut / Mutter M12
14	1	9321-0830	Flatkey /plattkil 8x7x30 R
15	2	9302-025	Lockring / Seegersäkring SGA25
16	2	9301-047	Lockring / Seegersäkring SGH47
17	3	9201-6005-20	Ballbearing / Spårkullager 6005-2RS (SKF)
18	1	9302-050	Lockring / Seegersäkring SGA50
19	1	3062-5005	Lockwheel / Spärrhjul
20	1	9322-1416	Flatkey /plattkil 14x9x16T
21	1	3062-5006	Shaftcoupling / Axelkoppling Type C
22	1	9389-001	Ballscrew / Kulskruv M12
23	1	9374-08006	Stopscrew / Stoppskruv M8x6
24	1	9511-2508	Knob / Kula M8 Ø25
25	1	3062-5008	Catchhook / Spärrhake
26	1	3062-5009	Screw / Skruv M12x37 special
27	1	9344-04036	Rollpin / fjädrande rörpinne M4x36
28	1	3062-5010	Shaftspacer / Axeldistans
29	2	3062-5011	Gearwheel / Kugghjul
30	1	9551-06	Greasenipple / Smörjnippel
31	2	9373-06016	Stopscrew / Stoppskruv M6x16
32	8	9361-08040	Screw / Skruv M8x40
33	2	9621-VSTIR1/4ED	Oilplug / Oljeplugg R1/4BSP
34	1	3060-5008	Nosewheelshaft / Noshjulsaxel
35	3	9302-020	Lockring / Seegersäkring SGA20
36	1	3060-5009	Spacecasing / Distanshylsa
37	1	9201-6004-2	Ballbearing / Spårkullager 6004-2RS
38	1	9343-04532	Pin / Ringsprint
39	1	3060-5010	Guideroller / Brythjul
40	2	9302-020	Lockring / Seegersäkring SGA20
41	1	3060-5011	Nosewheel casing / Noshjulshållare
42	2	3060-5012	Spacer / Distans
43	4	9201-6006-0	Ballbearing / Spårkullager 6006-0
44	2	3060-5013	Coverplate / Lock
47	1	9374-08010	Stopscrew / Stoppskruv M8x10
48	1	3060-5014	Chainwheel / Kedjehjul



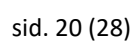
Linespreader





Sparepartlist linespreader ref to page 18

Ref.No.	Qty	Partnumber	Partname
1	1	3062-5012	Cover linespreaderattachment / Lock linspridarfäste
2	1	3062-5013	Arm linespreader / Linspridararm
3	1	3062-5014	Controlarm / Linspridararm
4	1	9674-001	Breatherplug / Lyftningsfilter MTSF R3/8 BSP
5	1	9551-06	Greasenipple / Smörjnippel
6	6	9361-06020	Screw / Skruv M6x20
7	2	9254-2020	Slide bearing / Glidlager 20x23x20
8	1	9302-020	Lockring / Seegersäkring SGA20
9	1	9344-05040	Rollpin / Fjädrande rörpinne FRP 5x40
10	1	3060-5021	Roller / Rulle
11	4	9254-0810	Slide bearing / Glidlager PDE 8x10x10
13	2	9361-08065	Screw / Skruv M8x65
14	1	9401-08016	Wingscrew / Vingskruv M8x16
15	1	9361-08040	Screw / Skruv M8x40
16	3	9441-084	Washer / Bricka BRB 8,4
17	1	9422-08	Locknut / Låsmutter M8
18	2	9449-013	Spacerring / Distansbricka
19	1	3062-5015	Spacer / Distanshylsa
20	1	9201-6004-2	Ballbearing / Spårkullager 6004-2RS
21	1	3060-5010	Guideroller / Brythjul
22	1	9361-08040	Screw / Skruv M8x40
25	1	9511-3010	Knob / Kula M10 Ø30

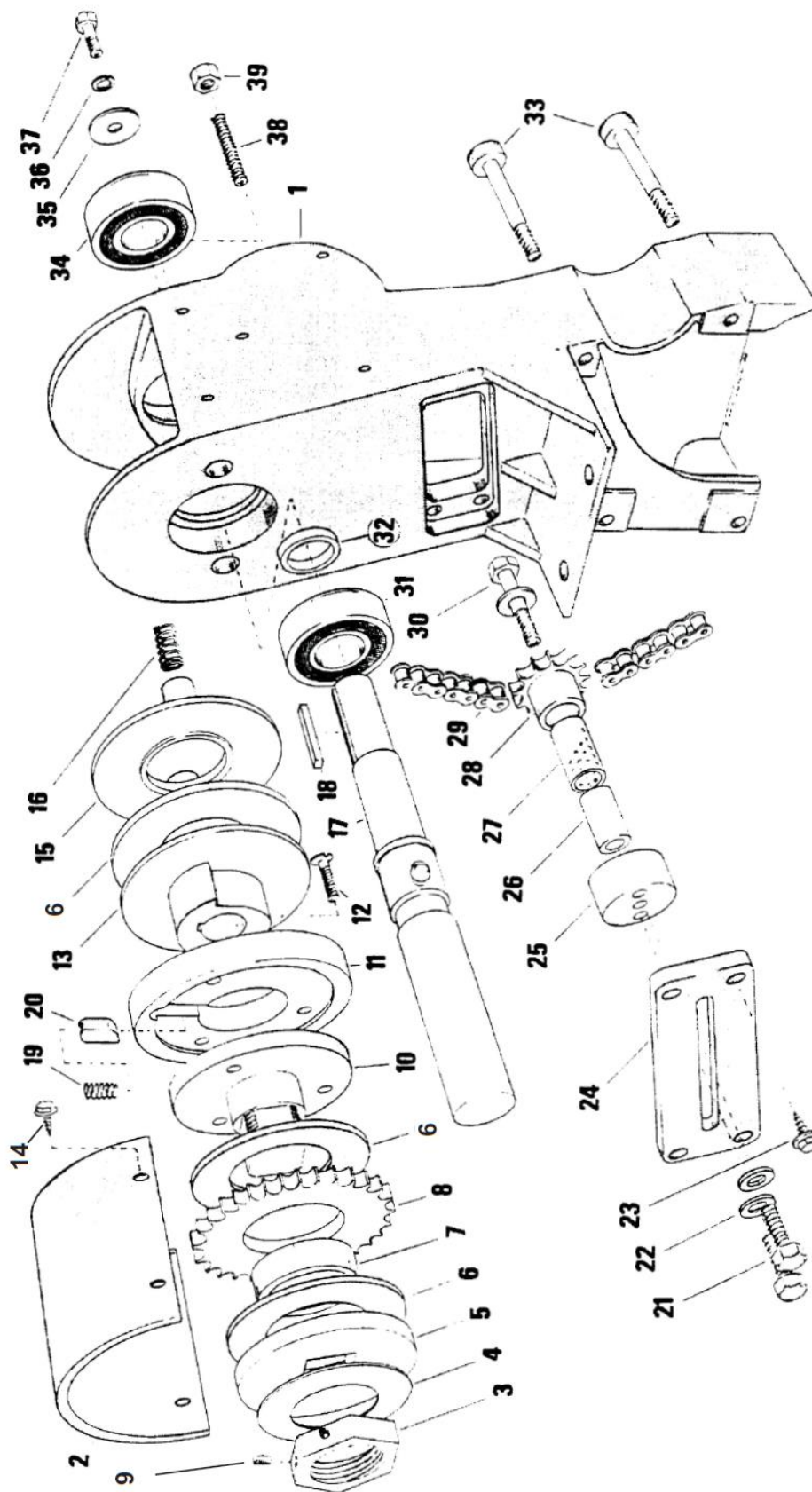




Sparepartlist Powerpack ref to page 20

Ref.No.	Qty	Partnumber	Partname
1	1	1010-5001	Tank
2	1	1010-5002	Tank cover / Tanklock
3	1	9642-00601	Hydraulicpump / Hydraulpump Casappa PLP6,3D
5	1	1013-5005	Shaft spacer engine / Distansrör motoraxel
6	1	1013-5001	Intermediate spacer engine / Mellandistans motor
7	1	1010-5003	Adaptor / Mellanstycke
8	3	9381-04016	Screw / Skruv MCS 4x16
9	1	2103-4020	Coupling complete / Axelkoppling komplett
10	1	1013-5004	Washer / Bricka
11	1	1013-5003	Fan / Fläkt
12	1	1013-5002	Coupling engine / Axelkoppling motor
13	1	9610-010-04	Rubberelement / Gummikors
14	1	9839-003	Nut / Mutter
15	1	9839-002	Washer / bricka
16	1	9610-010-02	Coupling / Axelkoppling pump
17	1	9323-003	Woodruffkey / Woodruffkil
18	1	9461-44624	O-ring 44,6x2,4
19	1	1012-5006	Adaptor pump / Pumpadapter
20	4	9372-06020	Screw / Insexskruv MF6S M6x20
21	1	9461-36020	O-ring
22	1	9631-305001	Hydraulic hose / Hydraulslang
23	1		O-ring
24	1	9649-004	Connectionflange / Anslutningsfläns
25	4	9633-GBR3/8	Washer / Bricka GBR3/8
26	3	9632-R83566	Adaptor R3/8 - R3/8
27	4	9371-08030	Screw / Insexskruv MC6S M8x30
31	1	9674-001	Plug MTSF 3/8
32	1	1010-5013	Cartridgecapsule / Filterhållare
33	1	9671-001	Filter cartridge / Filterpatron
34	1	9461-57624	O-ring 57,6x2,4
35	1	1010-5011	Filtercover / Filterlock
40	1	9673-001	Levelglass / Nivåglas
48	1	9621-VSTIR3/8	Oilplug / Oljeplugg R3/8
49	2	9373-08025	Studscrew / Stoppskruv M8x25
50	2	9503-001	Rubber suspension / Motordämpare R39M8
51	2	9444-082	Washer / Bricka FBB 8,2
52	2	9361-08030	Screw / Skruv M8x30
53	1	9329-006	Key / Kil 1/4"x20
54			Loctite 574 or equal (Tanksealing / Tanktätning)

Frictionunit / drumholder



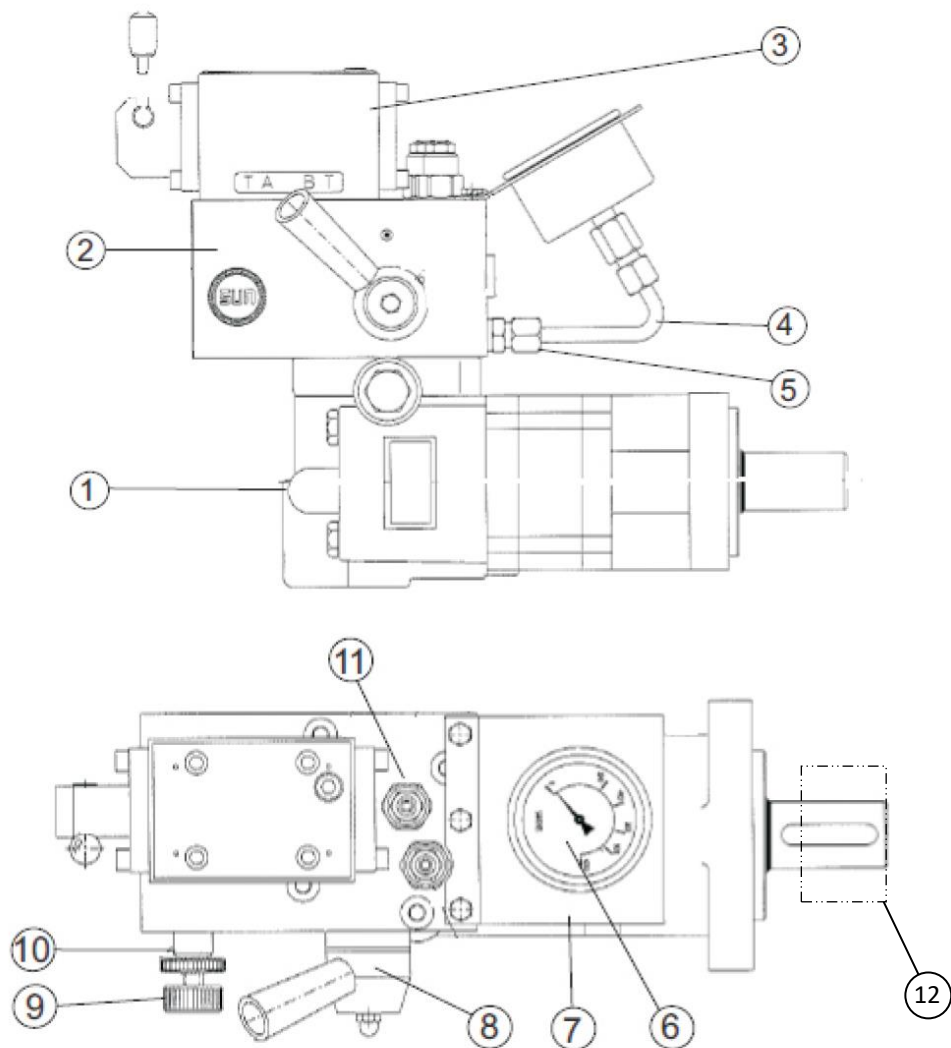


Sparepartlist frictionunit / drumholder ref. to page 22

Ref.No.	Qty	Partnumber	Partname
1	1	3062-5016	Drumholder frame / Trumhållarstativ
2	1	3062-5024	Chainguard / Kedjeskydd
3	1	3060-5047	Nut / Mutter
4	1	9485-001	Discspring / Tallriksfjäder
5	1	3060-5046	Clutch driveplate / Tryckplatta
6	1	9591-001	Frictiondisc / Friktionsbelägg
7	1	9229-001	Needle bearing / Nållager
8	1	3060-5026	Chainwheel / Kedjehjul
9	2	9373-08006	Grubscrew / Stoppskruv M6x8
10	1	3060-5045	Hub / Kopplingsnav
11	1	3060-5027	Coasterhub outer / Frihjulsnav ytterdel
12	3	9372-06025	Screw / Skruv MF6S M6x25
13	1	3060-5028	Coasterhub inner / Frihjulsnav innerdel
14	4	9361-06012	Screw / Skruv M6S M6x12
15	1	3060-5029	Brakehub / Bromsnav
16	2	9481-010	Compressionspring / Tryckfjäder
17	1	3060-5030	Drumshaft / Trumaxel
18	1	9322-0630	Key / Kil 6x6x30
19	1	9481-011	Compressionspring / Tryckfjäder
20	1	3060-5031	Catch / Spärr
21	2	9361-08025	Screw / Skruv M6S M8x25
22	2	9441-084	Washer / Bricka FBB 8,2
23	4	9361-06020	Screw / Skruv M6S M6x20
24	1	3060-5032	Cover / Lock
25	1	3060-5033	Distancepiece / Mellanstycke
26	1	3060-5034	Pipe / Rör
27	1	9251-1525	Slidebearing / Glidlager WB681
28	1	3060-5035	Chainwheel / Kedjehjul
29	1	3060-5025	Chain + Chainlock / Rullkedja + lås
30	1	9361-08045	Screw / Skruv M6S M8x45
31	1	9201-6005-2	Ballbearing / Spårkullager 6005-2RS
32	1	3060-5036	Spacer / Distans
33	4	9371-08080	Screw / Skruv MC6S M8x80
34	1	9201-6204-2	Ballbearing / Spårkullager 6204-2RS
35	1	9449-084	Washer / Bricka FBB 8,2x26x5
36	1	9444-082	Washer / Bricka FRB 8,2
37	1	9361-08020	Screw / Skruv M6S M8x20
38	2	9374-12045	Grubscrew / Stoppskruv SK6SSM12X45
39	2	9421-12	Nut / Mutter M12



Hydraulic manifold and motor



Ref.No.	Qty	Partnumber	Partname
1	1	9641-13102	Hydraulic motor 2-speed / Hydraulmotor 2-hast.
2	1	2103-5001	Hydraulic manifold / Hydraulblock
3	1	9661-010	Directional valve / Ritningsventil
4	1	9675-100	Hose / Måtslang
5	1	9621-GE8L1/4	Hydraulic connector / Hydraulkoppling
6	1	2103-5006	Gauge / Manometer
7	1	2103-5002	Gauge frame / Manometerhållare
8	1	9662-003	Valve / Ventil MRV3-10-D
9	1	9663-901	Control kit / Ratt
10	1	9663-020	Relief valve / Tryckbegränsningsventil
11	2	9663-033	Counterbalance valve / Lasthållningsventil
12	1	3062-5017	Gearwheel / Kugghjul



Accessories

Accessories overheadlinewinch

Pilotropedrum with 1100m Ø 6 mm Polynite
Part.no: **2060-0030**

Empty drum Ø 530
Part.no: **3060-0021**

Pilotrope Polynite 1100m Ø 6 mm
Part.no: **7512-061100**



Pilotropedrum with 1100 m Ø 6 mm Polynite Ø 680
Art.nr.: **204-034**

Piloteropedrum empty Ø 680
Part.no: **2040-0121**

Pilotrope Polynite 1100m Ø 6 mm
Part.no: **7512-061100**



Splitdrum
Part.no.: **2040-0215**





Accessories underground cable winch

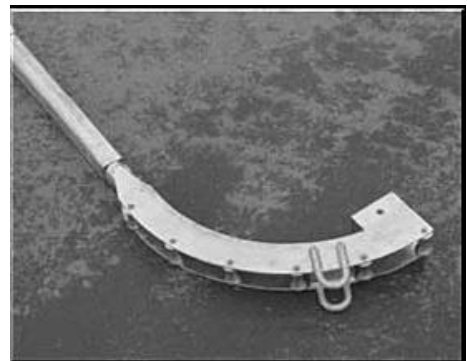
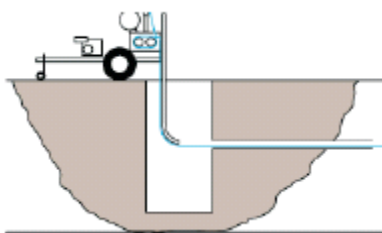
Drum and steel wire rope

Empty drum \varnothing 395 mm
Part. No.: 3060-0010

Steelwire rope 500 m \varnothing 5 mm
Part. No.: 7540-001



Underground boom
Part. No.: 2100-0020



Other accessories

Protective coverl Part.no.: 2100-0060





Sahlins Sweden AB

Företagsvägen 2
512 64 Holsljunga
Sweden

+46 320 209 330
sales@sahlins.com



SAHLINS.COM