

Tayogo[®]

wireless transmitter

Instruction manual



Thank you for buying our products. Please read the instructions carefully before use and use correctly.

Please keep it safe for future reference when you do not understand.

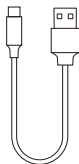
Package Contents



Wireless transmitter



Antenna



Charging cable

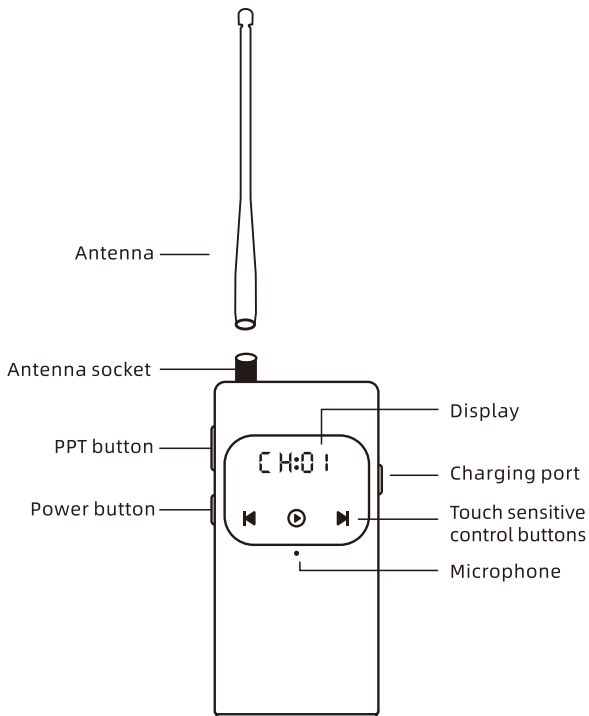


Instruction manual

Product Specifications

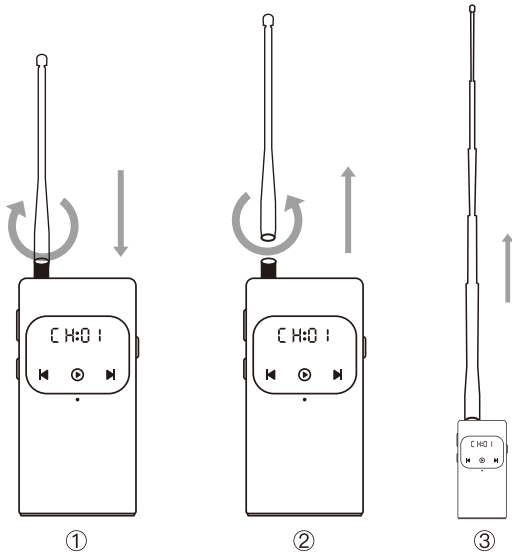
Model	T6
Battery Capacity	2500mAh
Charging Port	Type-C (5V/3A)
Maximum Driving Time	About 5-8 hours
Operating Temperature	-10 ~ 55°C
Applicable earphones	W16R、W23、W2 5
Size	About 112*56*21mm (excluding antenna)
Weight	About 116g
Origin	China

Name of each part



About Antenna

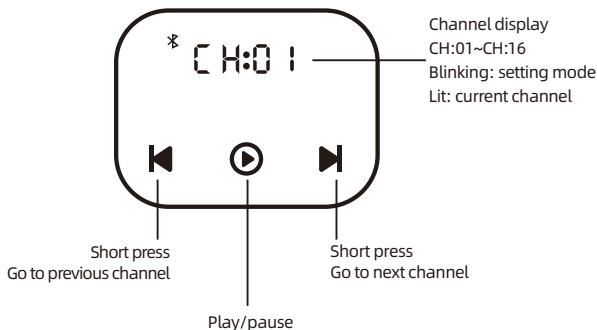
- ① Attachment: Place the antenna squarely on the socket and rotate clockwise to fully secure.
 - ② Remove: Rotate the antenna counterclockwise to remove.
 - ③ Antenna Extension: Can be extended depending on the communication status.
- ※ Do not use the antenna as a handle. Doing so may cause performance degradation due to damage.
- ※ For long-term stable use of the product, avoid frequent removal or bending of the antenna after installation.



How to use the transmitter

- ① Attach the antenna to the transmitter.
- ② Press and hold power button for 3 seconds to power ON/OFF.
- ③ Press and hold power button for 2 seconds to enable the touch buttons. the channel display starts to flash, Tap the ◀/▶ to adjust the value of the transmitter channel; Press power button again to lock the touch buttons (or will automatically lock after 10 seconds of inactivity).
- ④ The transmitter default channel is CH01. The headphones default mode is Receiving Mode on CH01. The transmitter and headphone receiver will automatically connect the first time they are turned on.
- ⑤ Press the power button (while powered on) to check battery level.
- ⑥ Connect your mobile phone to the T6 transmitter via Bluetooth : After the transmitter is switched on, the 📶 icon on the display will flash, when the Bluetooth connection is successful the icon stop Flashing.

※**Note:**The headphone and the T6 transmitter must be set to the same channel.





Power Button:

Press and hold for 3" to tun on/off

Press and hold for 2" to enable the touch button

Press to check the battery level

⑦ Volume adjustment: adjustable the volume on the phone and the receiver headphone.
Can not adjust the volume on the transmitter.

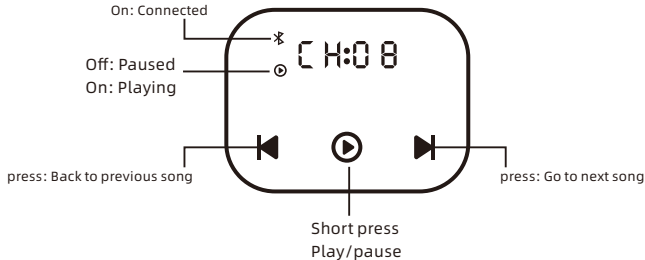
⑧ Play/pause: Enable the screen touch button , then short press ⏮ key music play/pause,
at the same time,the display ⏮ icon play state-light up, pause state-off

Flashing: Waiting for connection

On: Connected

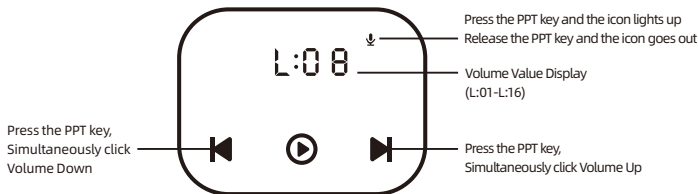
Off: Paused

On: Playing

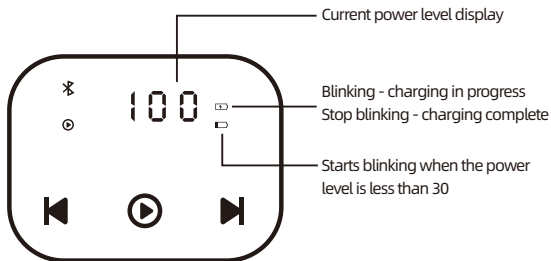


⑨ PPT Button: Under the power on condition, Press and hold to send real-time voice instructions while powered on.

⑩ PPT Volume Adjust: Press PPT button and tap volume button to adjust.



- ⑪ Battery level indicator: press the power button and the display will show the current amount of power remaining.
- ⑫ If the remaining battery power falls below 30%, the indicator will flash and an audible alert will be simultaneously notified by the headphone receiver.
- ⑬ CHARGING: Connect the transmitter to the standard USB port of the charger via the Type-C USB cable and the battery will be fully charged in approximately 2 to 3 hours. The transmitter supports 5 V/3 A input. If the amperage of the charger is low, charging time may be longer.



Note

- Wireless transmitters are not waterproof. Do not wash it in water or use it underwater.
- When using the product for the first time, please charge the product fully before use.
- Do not subject the product to strong shocks or drop it. Doing so may cause damage.
- Keep the product away from fire sources and high temperature environments to prevent damage due to overheating.
- Do not use the product in thunderstorms, storms or other extreme weather conditions. Do not use the product in thunderstorms, storms or other extreme weather conditions, as this may cause product malfunction or safety problems.
- For safety reasons, do not use the product when connected while charging.
- If the product is not used for long periods of time, it is recommended to charge the battery at least once a month to prevent battery degradation and extend product life.

PROPERTY SAFETY NOTICE:

This product is designed for use with a mobile phone. If you are swimming alone, please ensure that your phone and transmitter are placed securely on shore or inside your bag. If your headphone suddenly loses signal while swimming, return to shore immediately to check whether your mobile phone and transmitter are still in place and have not been stolen.

After-Sales Service

Contact Us

※ If you have any questions, feel free to contact the Tayogo customer service team at: **cs@tayogo.com**.

Warranty Period

The warranty period of this product is 1 year from the date of purchase. Please understand that the warranty does not apply in the case of damage or poor function caused by misuse such as falling, or in the case of alteration or repair by informal repairers.

Contact Information

Company Name: Dongguan Gaoyue Digital Technology Co., Ltd.

Address: Room 703, Building 13, No. 1 Jingdong Road, Fenggang Town, Dongguan City, Guangdong Province, China

Phone: +86-186-0306-0866

URL: www.tayogo.com

Email: cs@tayogo.com

