



DIGITAL STAINLESS STEEL KETTLE

Model Number EC-DSSK-03

INSTRUCTION MANUAL

Version 02, 2022



AFTER SALES SUPPORT

  1800 269 981

Toll free

 support@wunsche.com.au

MODEL: EC-DSSK-03 PRODUCT CODE: 710128 11/2022

Contents

- 01 Welcome
- 02 Warranty Details
- 03 General Information and Safety Instructions
- 06 Assembly and Parts List
- 07 Getting Started and Contents
- 08 Instructions
- 10 Other Useful Information

AFTER SALES SUPPORT

  1800 269 981

Toll free

 support@wunsche.com.au

MODEL: EC-DSSK-03 PRODUCT CODE: 710128 11/2022

Welcome

Congratulations on choosing to buy a STIRLING product.

All products brought to you by STIRLING are manufactured to the highest standards of performance and safety, and as part of our philosophy of customer service and satisfaction, are backed by our comprehensive 3 Year Warranty.

We hope you will enjoy using your kettle for many years to come.

These instructions will familiarize you with your Digital Stainless Steel Kettle and simplify use. Please read these instructions thoroughly before use. Please ensure you observe the safety instructions to avoid accidents, injury and damage.

Keep these instructions in a safe place, for later reference and include them if transferring the appliance to a third party.

Explanation of symbols

The following symbols and signal words are used in this user manual, on the toaster or on the packaging.



This product has a three year warranty



This signal symbol/word designates a hazard with moderate degree of risk which may lead to death or severe injury if not avoided.



The Regulatory Compliance Mark (RCM) shows that a product is safe to supply to the Australian market.



This signal word warns against potential damages to property.



Digital Stainless Steel Kettle

Warranty Details

REGISTER YOUR PURCHASE AT www.aldi.com.au/en/about-aldi/product-registration/ TO KEEP UP-TO-DATE WITH IMPORTANT PRODUCT INFORMATION

The product is guaranteed to be free from defects in workmanship and parts for a period of 36 months from the date of purchase. Defects that occur within this warranty period, under normal use and care, will be repaired, replaced or refunded at our discretion. The benefits conferred by this warranty are in addition to all rights and remedies in respect of the product that the consumer has under the Competition and Consumer Act 2010 and similar state and territory laws.

Our goods come with guarantees that cannot be excluded under the Australian Consumer Law. You are entitled to a replacement or refund for a major failure and for compensation for any other reasonably foreseeable loss or damage. You are also entitled to have the goods repaired or replaced if the goods fail to be of acceptable quality and the failure does not amount to a major failure.



General Information and Safety Instructions



Please read carefully through the following information and keep these instructions, in case you need to refer to them later. If you pass the product on to someone else, please also include these instructions.

General Safety Instructions

- The kettle is designed exclusively for private use and for the intended purpose. This kettle is not fit for commercial use. **DO NOT** use it outdoors.
- Keep the kettle away from sources of heat, direct sunlight, humidity (never immerse the kettle in any liquid) or expose the kettle to sharp objects.
- **DO NOT** use the kettle with wet hands. If the kettle is humid or wet, unplug it immediately. **DO NOT** put it in water.
- When cleaning or storing, switch off the kettle and always pull out the plug from the socket (pull on the plug, not the cable) if the kettle is not being used and remove the attached accessories.
- This kettle is not intended for use by persons (including children) with reduced physical sensory or mental capabilities, or lack of experience and knowledge, unless they have been given supervision or instruction concerning use of the kettle by a person responsible for their safety.
- Children should be supervised to ensure that they do not play with the appliance.
- Check the kettle and the cable for damage on a regular basis. **DO NOT** use the kettle if it is damaged.
- **DO NOT** try to repair the kettle on your own. Always contact a qualified electrician.
- To avoid danger, always ensure that damaged or faulty cables are replaced by the manufacturer or a qualified electrician. Replacement cables must be of the same type.
- Use only original spare parts. If spare parts are required, ensure that they are new and unused.
- Pay careful attention to the following "Special Safety Instructions".
- Take care when handling the kettle after use as the inside bottom of the jug is subject to residual heat after use.

WARNING: Avoid spillage on the connector of the power base.

WARNING: Improper installation or misuse of the product may result in the risk of fire, electric shock and/or personal injury.

General Information and Safety Instructions (Cont.)

Usage conditions and restrictions (Cont.)

- This appliance is NOT intended to be used in applications such as:
 - farm houses;
 - staff kitchen areas in shops, offices and other working environments;
 - by clients in hotels, motels and other residential type environments;
 - bed and breakfast type environments.
- Domestic use only: This appliance is intended for indoor domestic use only and is not intended for commercial, industrial or outdoor use.
- Purpose: **DO NOT** use this kettle for anything other than its intended purpose, and only use it as described in this manual. **DO NOT** use the kettle to boil anything other than water. Any other use is not recommended and may cause fire, electric shock or injury.
- Power base: Only use this kettle with the supplied power base. **DO NOT** use the power base to power any appliance other than this kettle.
- Accessories: The use of accessory attachments are not recommended. If used, they may cause injury and void warranty.
- Boiling empty: **DO NOT** use the kettle without water in it. Should you allow the kettle to operate with insufficient water, the overheat protection will automatically switch it off. In this instance, allow the kettle to cool before filling it with cold water and re-using the appliance.
- Noncompliance: We accept no liability for any eventual damages caused by improper use or inappropriate handling, or by any other noncompliance with the instructions in this manual.
- Children: The kettle is not a toy. **DO NOT** let children play with it. Close supervision is necessary when any appliance is used by or near children.

Special Safety Instructions for this Kettle

- Use only cold water when filling.
- The water level must be between the MAX and 0.5L marks. If the kettle is overfilled, boiling water may splatter, which might result in a hazard to the user.

CAUTION:

Ensure that the kettle is switched off before removing it from its stand.

Special Safety Instructions for this Kettle

- The kettle is only to be used with the stand provided.
- The kettle must not be immersed in liquid.
- The kettle is for household use only.
- If winding the power cord, avoid tight bends as this could damage the cord.

General Information and Safety Instructions (Cont.)

Special Safety Instructions for this Kettle (Cont.)

- If the supply cord is damaged, it must be replaced by the manufacturer or a qualified electrician in order to avoid a hazard.
- Always ensure that the lid is shut correctly.
- The base and exterior of the machine must not become wet.

CAUTION:

DO NOT operate the kettle on an inclined plane.

DO NOT operate the kettle unless the element is fully immersed.

DO NOT move while the kettle is switched on.

CAUTION: HOT!

- Kettle surface: The surface of the kettle does get hot during use and remains hot for a while afterwards. **DO NOT** touch hot surfaces, use the handle and switch.
- Safety lid: Always ensure the lid is and remains closed while the water is boiling or straight afterwards. Scalding may occur if the lid is opened during operation. Be careful when opening the lid for refilling when the kettle is hot.
- Hot steam: Avoid contact with steam from the spout when water is boiling or just after it has switched off.
- Water pouring: Always take care when pouring boiling water. Tilt the kettle slowly and carefully without tipping it too fast.
- Moving with hot water: Use extreme caution when moving the kettle containing hot water.

Assembly and Parts List



1. Lid release button
2. Lid
3. Spout
4. Water level indicator

5. Mesh water filter
6. 360° power base with cord storage
7. On/Off switch I/O
8. Temperature preset buttons
9. Keep warm function

Getting Started

- Remove the kettle and accessories from the packaging.
- Carefully remove all packaging material.
- Check whether all of the parts are present and undamaged.
- Clean all of the parts with a soft, damp cloth.
- Before first use, boil fresh water at least twice in the kettle.
Use only water without any additives or ingredients.
- Thoroughly wipe all parts dry.

Variable Temperature Control



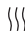
Your Digital Kettle has four temperature settings for ideal tea and coffee brewing.


Temperature range: 70° C, 80° C, 90° C and 100° C.

Different tea varieties all have an optimal brewing temperature which allows for the best flavour to be released. For example, green and white teas are more delicate and are ideally brewed between 80°C - 85°C to achieve the best flavour. Using boiling water may scald delicate teas creating a bitter taste. Please refer to your tea's instructions to find out what the ideal brewing temperature may be.

Keep Warm Function

The Digital Kettle comes equipped with a convenient Keep Warm function. Once the water has reached your selected temperature, the Keep Warm function will maintain the water to this temperature for up to 30 minutes. The kettle will reheat the water to the pre-set temperature and then stop heating if the water temperature is 5° C lower than the pre-set temperature during keep-warm process. For example, if the pre-set temperature is 70° C, the kettle will reheat the water to 70° C and then stop heating if the water temperature is lower than approx. 65° C.

The corresponding selected temperature indicator light, the keep-warm indicator light and the light bar are illuminating while the indicator light of  button is turned off. By pressing the  or  button the keep-warm function can be cancelled.

If the kettle was disconnected from its power base for less than 3 minutes and then placed back onto it, the appliance will continue to keep-warm based on the pre-set temperature. Hold and press " " button for 2 seconds for the appliance switch to sleep-mode or press any button to switch into standby mode.

NOTE: Keep warm function only works for 70°, 80° and 90° C, not 100° C.

Contents

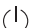
- 1 x Cordless Kettle
- 1 x Base Station with Power Cord
- 1 x Mesh Water Filter
- 1 x Quick Start Guide
- 1 x Instruction Manual
- 1 x Warranty Card

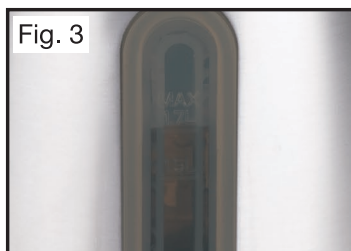
Instructions



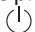
THIS APPLIANCE IS DESIGNED FOR BOILING OF DRINKING WATER ONLY. NEVER USE IT TO HEAT OR BOIL ANY OTHER LIQUIDS OR FOOD. THE LID SHOULD ALWAYS BE FIRMLY IN PLACE AND LOCKED INTO THE CLOSED POSITION BEFORE USE.

General Instructions

1. Place the kettle with base station on a flat surface.
2. To fill the kettle with water, remove it from the power base and open the lid by pressing the lid release button on the handle. The lid will then open automatically. See Fig. 1 and 2
3. Fill the kettle with desired amount of water and make sure to fill the kettle with a minimum of 0.5L and the maximum line. See Fig. 3
4. Ensure that the lid is properly closed and locked firmly. Then place the kettle onto the power base station.
5. Plug the power cord into the 230/240V power outlet and switch it on. The buttons on the base will start to blink.
6. Position the kettle on the power base, the light bar and the 100° C indicator button will light up.
7. Press the  button to turn the kettle on. The On/Off button as well as the light bar will keep illuminating throughout the boiling process. It is pre-set to boil to 100° C unless another temperature button was selected.




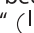
Instructions (Cont.)

8. A temperature of "70° C", "80° C", "90° C" and "100° C" can be selected. After the pre-set temperature has been selected, its corresponding indicator light illuminates. By pressing "  " button the kettle starts heating. When heating the water to a pre-set temperature, one beep can be heard once the desired temperature was reached and the kettle will stop heating and switch to keep-warm mode automatically for max. 30 minutes. The selected pre-set temperature indicator light as well as the indicator light of the keep-warm button and light bar keep illuminating during this process. After 30 minutes, if no other function has been selected, the kettle will stop the keep-warm function, all LEDs will turn off and the appliance switches to sleep mode. Any button can be pressed to switch the appliance to standby mode.

NOTE: Keep warm function only works for 70°, 80° and 90° C, not 100° C.

9. A beep will indicate once the water has reached the selected boiling temperature. The kettle will switch off automatically.
10. Take care when pouring water from your kettle as boiling water will scald. **DO NOT** pour water too quickly. Always keep the lid closed when pouring water. Lift the kettle off the base and pour the water into your desired vessel.
11. When not in use, the kettle should be switched off and stored on its power base station.

NOTE:

- You can press the "  " button to stop the heating process.
- The kettle will switch to sleep mode if the kettle is removed from its power base or if it has not been operated for more than 3 minutes. All LEDs will turn off. If kettle is placed back onto its power base and any button has been pressed the appliance will switch to stand-by mode.
- When pressing the "  " button continuously for 2 seconds the appliance will switch to sleep mode if the kettle is placed on the power base. You can press any button so that the appliance switches into standby mode. The indicator light of 100 ° C and the light bar will light up. If the kettle is not placed on its power base the light bar will blink once per second and all other LEDs are turned off.

Dry boil protection

This kettle is fitted with a boil dry protection safety feature, which protects against overheating should the appliance be operated with insufficient water. The kettle will stop heating and automatically switch 'OFF'. If this occurs, switch off at the power outlet and unplug. Allow kettle to cool before refilling with cold water to re-boil. The safety boil dry protection will automatically reset. If the kettle was accidentally operated without water the kettle will stop heating automatically, meanwhile all of the LEDs will blink for warning.

NOTE:

Always ensure the kettle is filled with minimum 0.5L. Too little water can result in the kettle switching off. Filling above the maximum indicator may result in boiling water splashing from the kettle causing a burning/scalding hazard.

Other Useful Information

Cleaning

- Always ensure that the kettle is switched off and disconnected from the wall socket before cleaning!
- The exterior of the kettle should be cleaned, if necessary, with a slightly damp cloth without additives or cleaning agents.
- The kettle features a removable mesh filter to hold back scale deposits for cleaner water. To clean the mesh filter remove the filter by opening the lid and sliding the filter up and out of the kettle.
- The filter can easily be cleaned by running under hot water and rubbing with a cleaning cloth.
- To reattach the filter, simply slide the filter down into the slot behind the spout of the kettle.

Decalcification

- **DO NOT** use chemicals, steel or abrasive cleaners to clean the inside or outside of the kettle.
- The frequency of the decalcifying operation depends on the hardness of the water and on how often the kettle is used.
- If the kettle switches off before the water boils, it may need to be decalcified.
- Please do not use vinegar to clean. Instead, only a commercially available decalcification agent on the basis of citric acid should be used. Only use the quantities stated in the instructions.



NEVER IMMERSE THE KETTLE BASE, SWITCH AREA, POWER BASE STATION OR POWER SUPPLY CORD IN WATER, OR ALLOW MOISTURE TO COME INTO CONTACT WITH THESE PARTS.

Overheat protection

- The kettle has an integrated, automatic shut-off feature that shuts down power to the kettle if it is empty, preventing accidental operation without water.
- Once this safety feature has been activated, unplug the kettle and let it cool down for 5-10 minutes before filling it with cold water. Then the boiling process can restart.

Storage

- Before storing, ensure the kettle is switched off, empty, clean and dry. Close the lid and make sure it is securely locked into place.
- Wrap the power cord around the cord storage located under the power base.
- Stand the kettle upright on the power base.
- **DO NOT** store anything on top of the kettle.

Other Useful Information (Cont.)

Technical Data

Model:	EC-DSSK-03
Rated voltage:	220-240 V ~ 50-60 Hz
Rated power:	1850 – 2200 W
Capacity:	1.7 Litres
Temperture Setting:	70°C, 80°C, 90°C, 100°C
Concealed heating element	

As our kettle are constantly being further developed and improved, design and technical changes are possible.

Disposal

Packaging materials are considered raw materials and can therefore be reused. Dispose of them according to type in an environmentally friendly manner.



Do not put old devices into your household waste, but take them to collection points for electrical waste.

Your local council can provide you with addresses and opening hours of your local waste disposal centres.

For more information on recycling visit arl.org.au





Digital Stainless Steel Kettle

Repair and Refurbished Goods or Parts Notice

Unfortunately, from time to time, faulty products are manufactured which need to be returned to the Supplier for repair.

Please be aware that if your product is capable of retaining user-generated data (such as files stored on a computer hard drive, telephone numbers stored on a mobile telephone, songs stored on a portable media player, games saved on a games console or files stored on a USB memory stick) during the process of repair, some or all of your stored data may be lost. **We recommend you save this data elsewhere prior to sending the product for repair.**

You should also be aware that rather than repairing goods, we may replace them with refurbished goods of the same type or use refurbished parts in the repair process.

Please be assured though, refurbished parts or replacements are only used where they meet ALDI's stringent quality specifications.

If at any time you feel your repair is being handled unsatisfactorily, you may escalate your complaint. Please telephone us on **Customer service hotline** 1800 269 981 or write to us at:

Wunsche (Australia) Pty Ltd
c/o Install and Fix Solutions Pty Ltd
Unit 1, 9 Kingsbury Street, Brendale, Qld 4500, Australia

Help Desk 1800 269 981
Operating hours 8:30 am - 5:30 pm Monday to Friday
E-mail: support@wunsche.com.au



support@wunsche.com.au

MODEL: EC-DSSK-03 PRODUCT CODE: 710128 11/2022

AFTER SALES SUPPORT

1800 269 981

Toll free

3

YEAR WARRANTY