

HiFuture



RIPPLE

Quick Start Guide

Please read this instruction carefully before using the product and keep it properly

SHENZHEN FUTURE ACCESS TECHNOLOGY CO., LTD. Explore more at www.hifuturegroup.com © All Rights Reserved

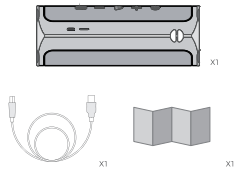
Ripple

HiFuture
MAKES LIFE
MORE VALUABLE

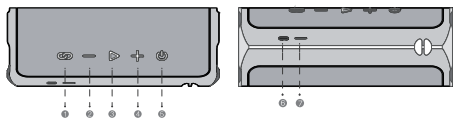


SHENZHEN FUTURE ACCESS TECHNOLOGY CO., LTD. Explore more at www.hifuturegroup.com © All Rights Reserved

Package List



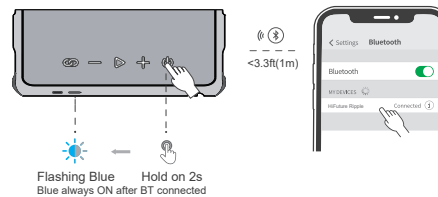
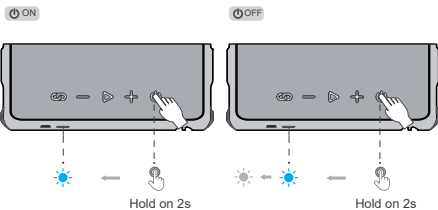
Diagram



- 1.TWS/ EQ
- 2.Volume-/Previous track
- 3.Pause/Play
- 4.Volume+/Next track
- 5.Power button
- 6.Type-C charging port
- 7.Power/Bluetooth indicator light

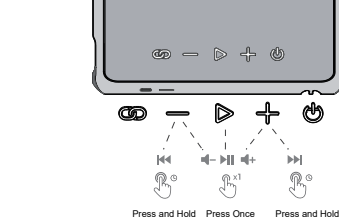
-1-

SHENZHEN FUTURE ACCESS TECHNOLOGY CO., LTD. Explore more at www.hifuturegroup.com © All Rights Reserved

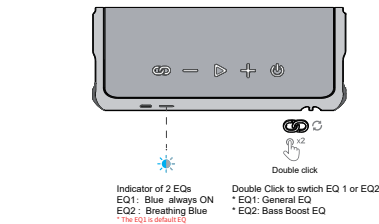


-2-

SHENZHEN FUTURE ACCESS TECHNOLOGY CO., LTD. Explore more at www.hifuturegroup.com © All Rights Reserved

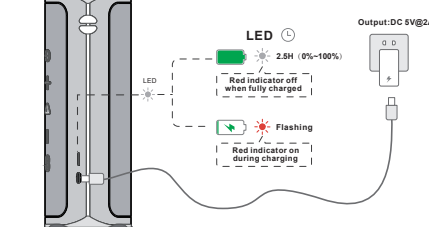


Dual EQ

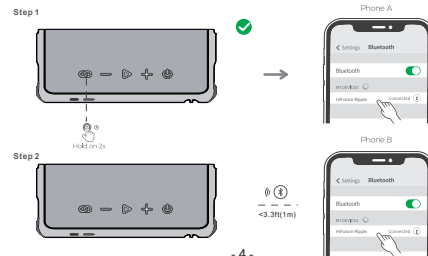


-3-

SHENZHEN FUTURE ACCESS TECHNOLOGY CO., LTD. Explore more at www.hifuturegroup.com © All Rights Reserved



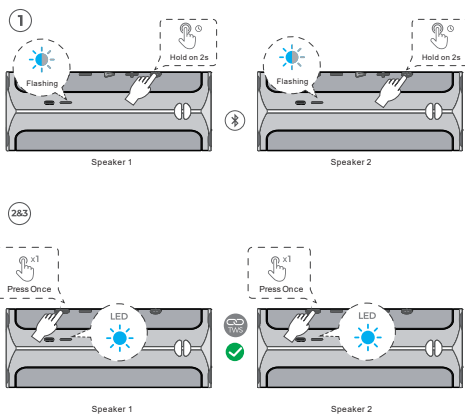
Switch Between 2 Bluetooth Devices



-4-

SHENZHEN FUTURE ACCESS TECHNOLOGY CO., LTD. Explore more at www.hifuturegroup.com © All Rights Reserved

TWS Connection(Twin Speakers Mode)



Indicator flashing blue before pairing
Blue indicator always ON after BT connected

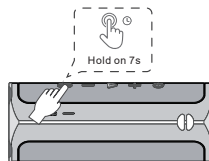
-5-

SHENZHEN FUTURE ACCESS TECHNOLOGY CO., LTD. Explore more at www.hifuturegroup.com © All Rights Reserved

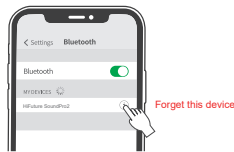


Restore factory settings

Reset the Ripple: With Ripple Powered ON, long press the () for 7 seconds, there will be a prompt sound, which means the Ripple had been reset successfully.



* You might need to Reset the Ripple if it's not in correct connection with your devices
* After Resetting, delete the paired "HiFuture Ripple" from your device and re-pairing it.



-6-

SHENZHEN FUTURE ACCESS TECHNOLOGY CO., LTD. Explore more at www.hifuturegroup.com © All Rights Reserved

Technical Specifications

Type:	Portable Bluetooth Speaker	BT Chipset:	AC696B8
Amplifier & DSP:	ACM8625	Audio Decode:	SBC/CVSD
Preset EQ:	Dual EQ (General or Bass Boost)	Driver Type:	Racetrack-shaped woofer + Tweeter
Bluetooth Version:	Bluetooth 5.3	Speaker diameter:	45*80 mm 36*52 mm
Support profile:	A2DP1.3/AVRCP1.6/HFP1.7	Speaker impedance:	4ohms (±15%)
Speaker Frequency Response:	70Hz-20KHz(±6dB)	Speaker rated power:	1*20W+1*10W
Battery type:	Li-ion polymer battery 4000mAh	Rated power:	30W
Battery lifetime:	Remain 80% capacity after 300 cycles	SPL:	81dB/1m/1W
Music play time:	12hours *	SNR:	>=80dB
Charge Voltage & Current:	DC5V@2A	THD+N:	<=1% (20W/1kHz)
Wireless Range:	10m(Free space)	Standby time:	300Days
Dimension(L*W*H):	200*75*82MM	Charging time:	2.5hours
Water resistance:	IPX7	Charge port:	Type C
Manufacturer Warranty:	1 Year Limited Warranty	Weight:	550g

*Play time base on HiFuture testing standard at 50% volume on IOS phone with Hotel California at temperature 25 degree .

-7-

SHENZHEN FUTURE ACCESS TECHNOLOGY CO., LTD. Explore more at www.hifuturegroup.com © All Rights Reserved

Follow us



<http://www.hifuturegroup.com/>

HiFuture
MAKES LIFE MORE VALUABLE

-8-

SHENZHEN FUTURE ACCESS TECHNOLOGY CO., LTD. Explore more at www.hifuturegroup.com © All Rights Reserved