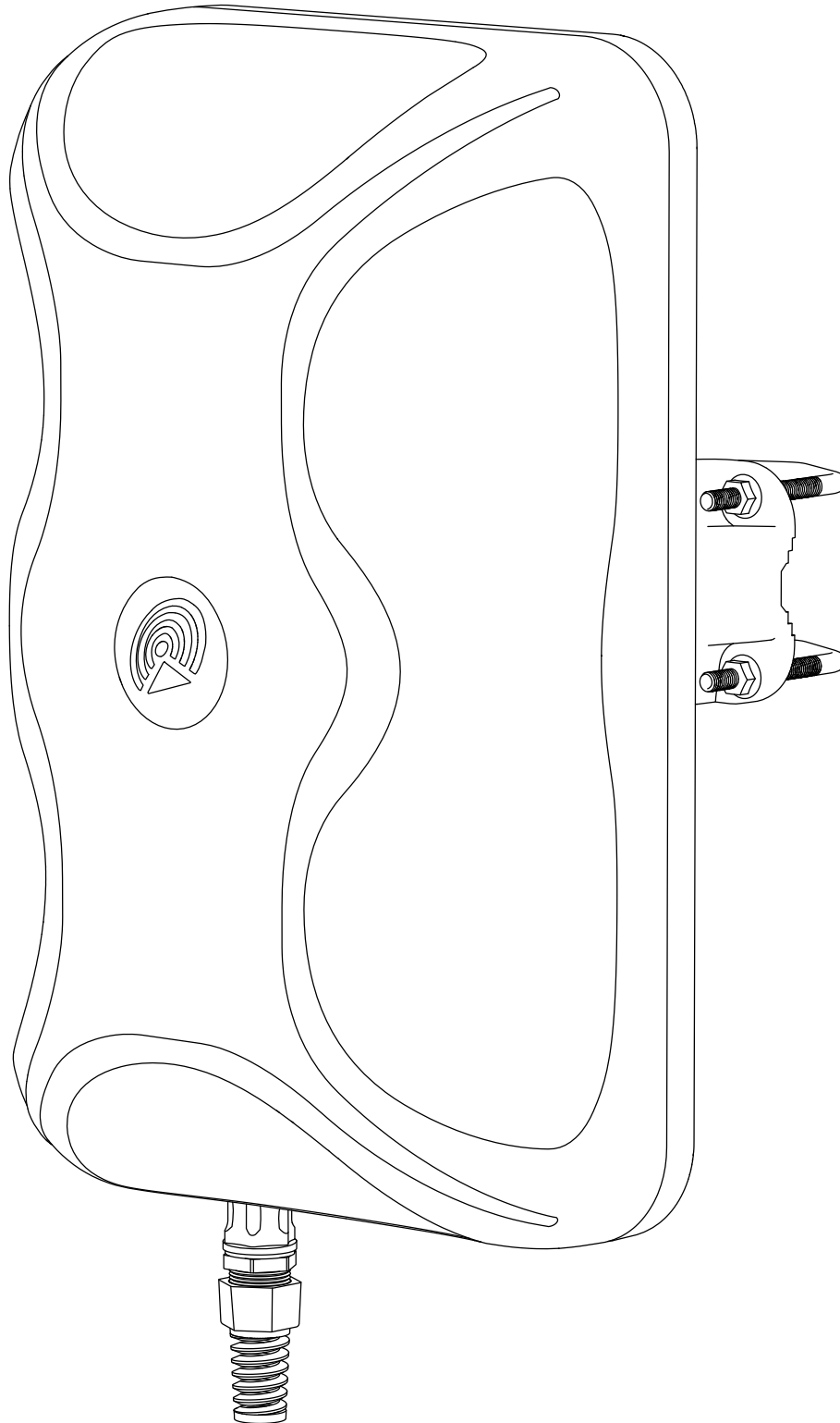
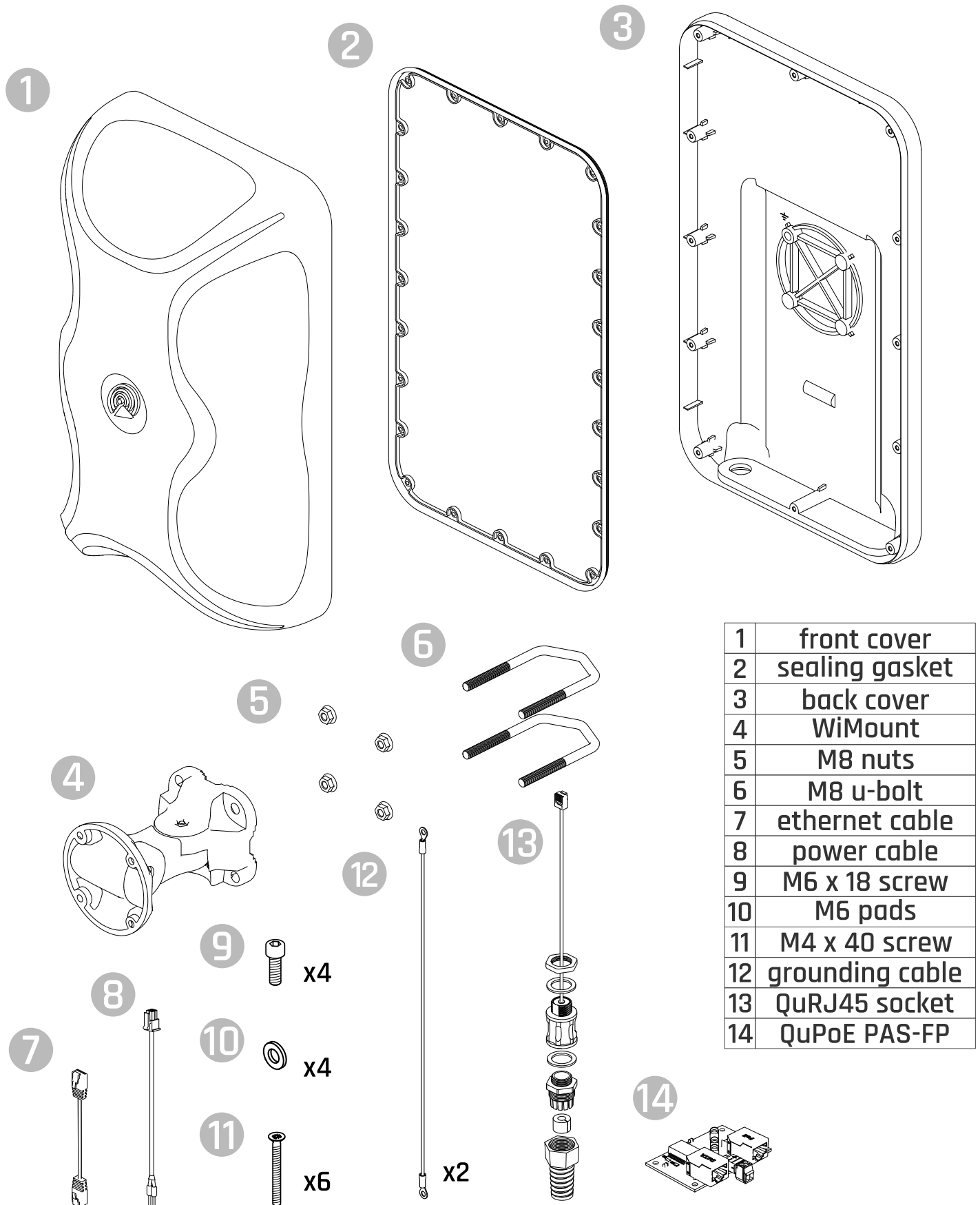


Quick Installation Guide

Antenna QuMax for Semtech XR60

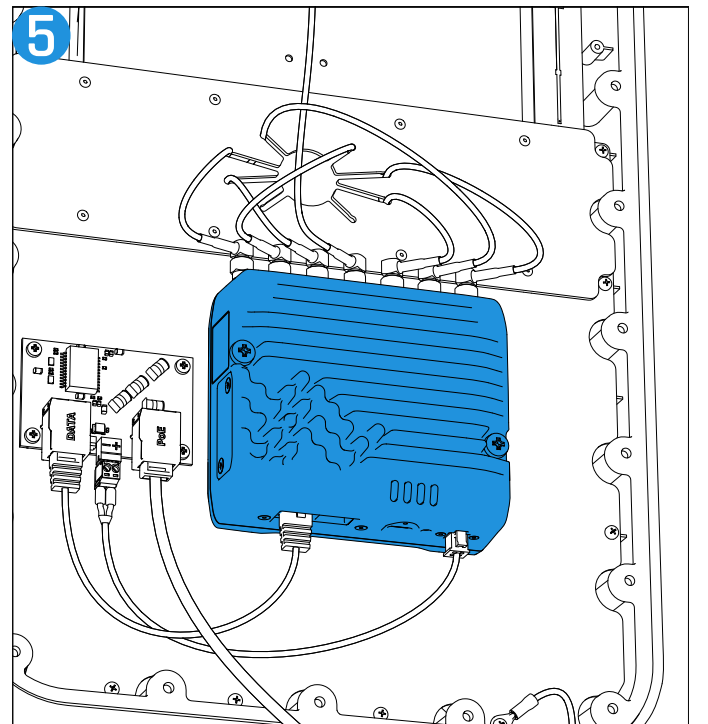
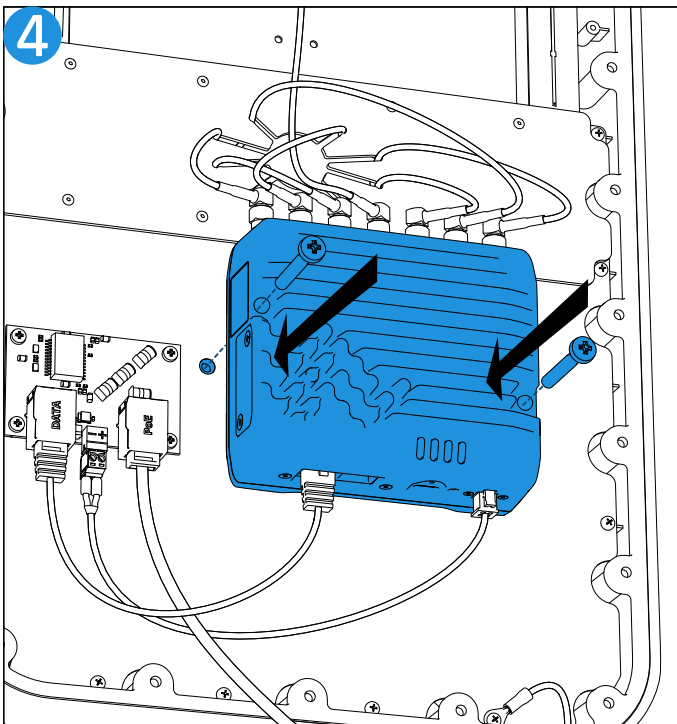
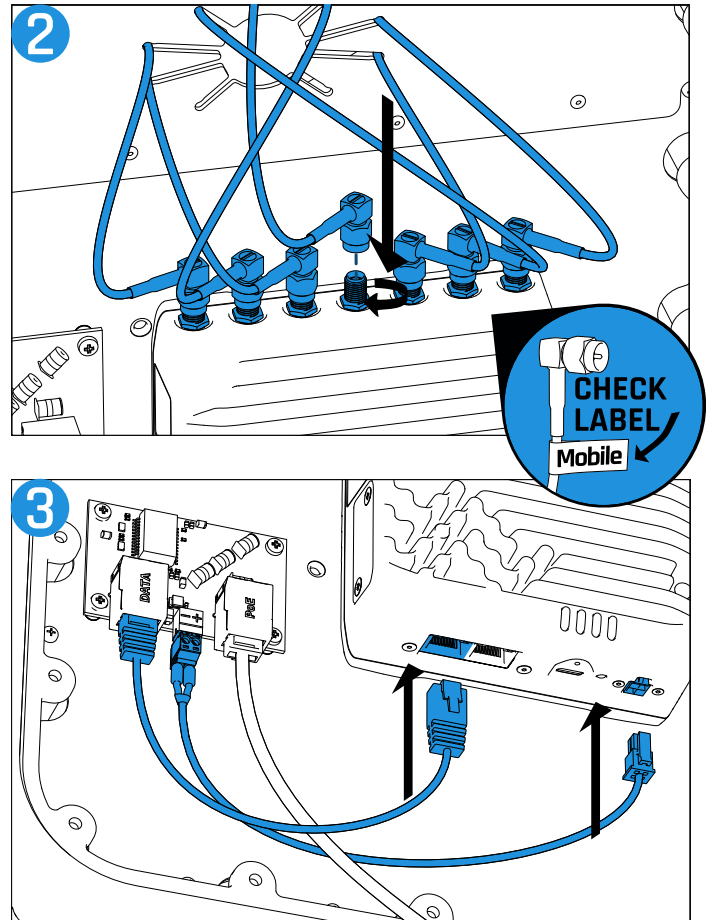
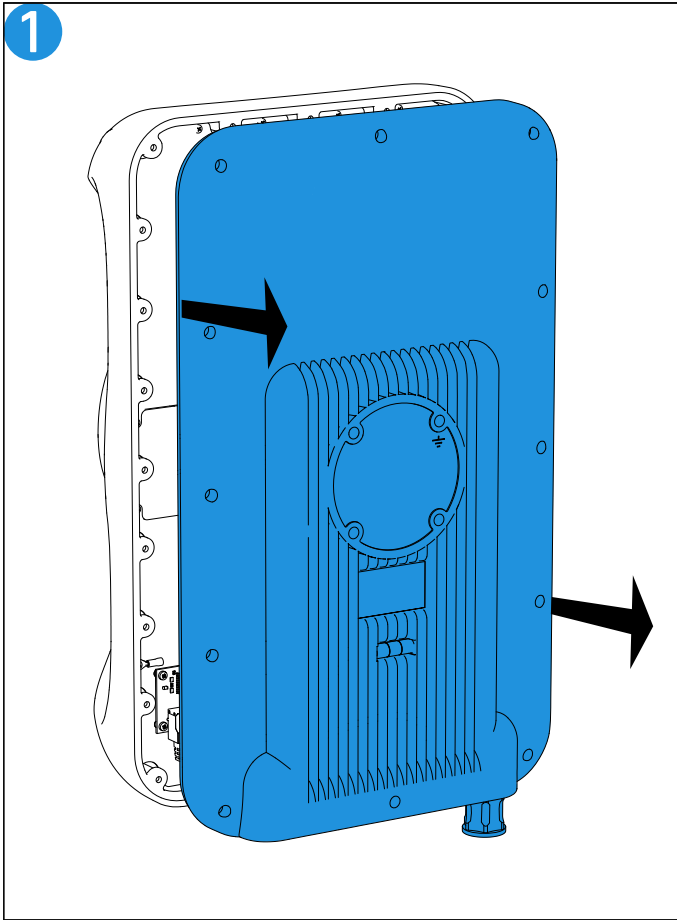


What's inside



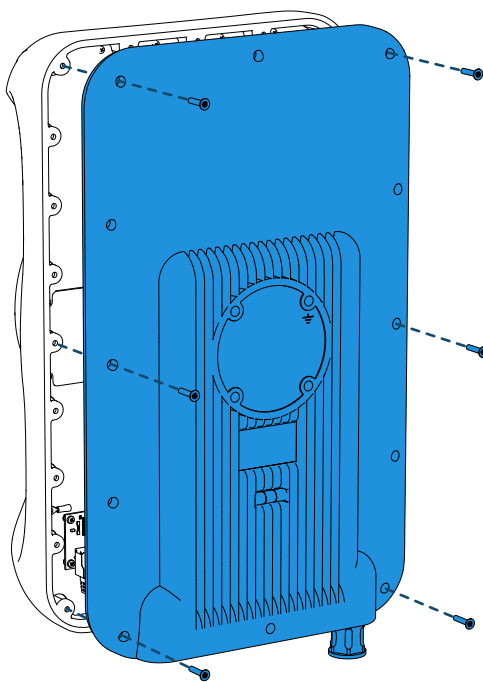
1	front cover
2	sealing gasket
3	back cover
4	WiMount
5	M8 nuts
6	M8 u-bolt
7	ethernet cable
8	power cable
9	M6 x 18 screw
10	M6 pads
11	M4 x 40 screw
12	grounding cable
13	QuRJ45 socket
14	QuPoE PAS-FP

Antenna Installation

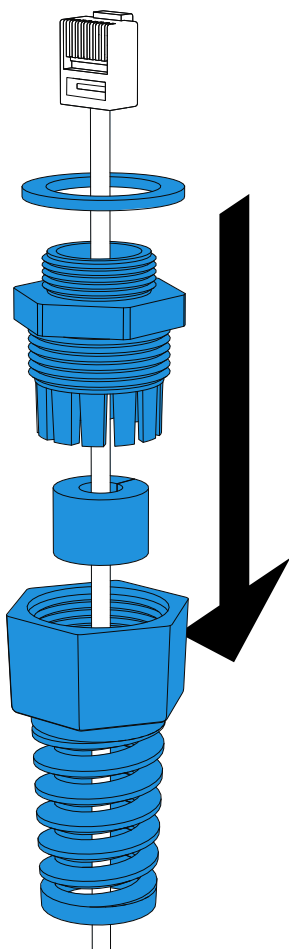


Antenna Installation

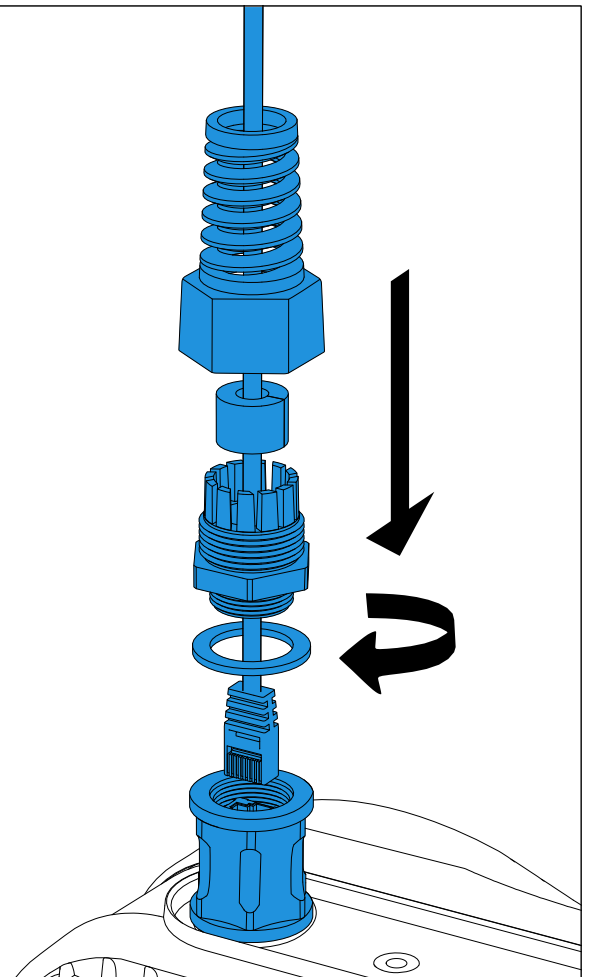
6



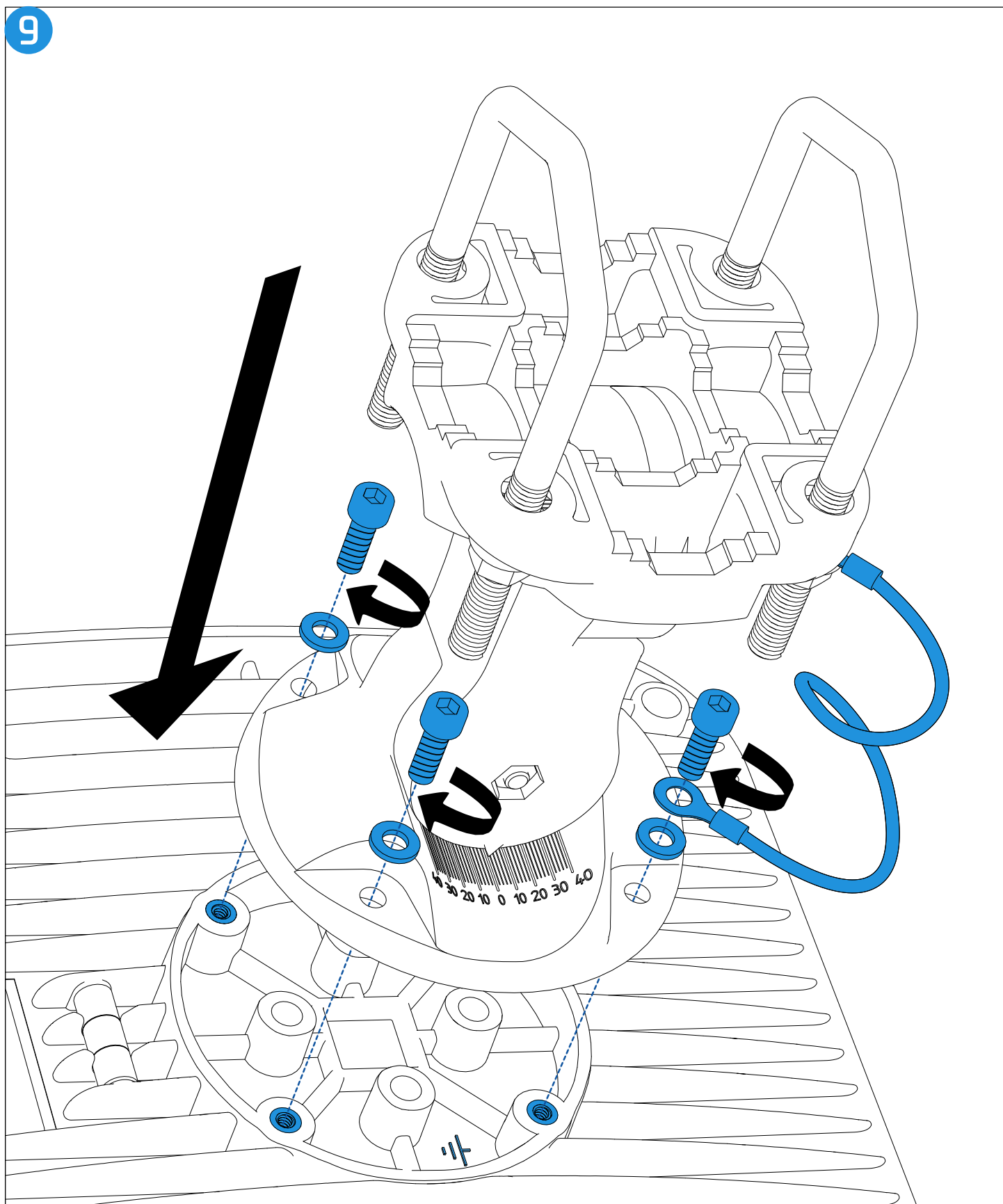
7



8



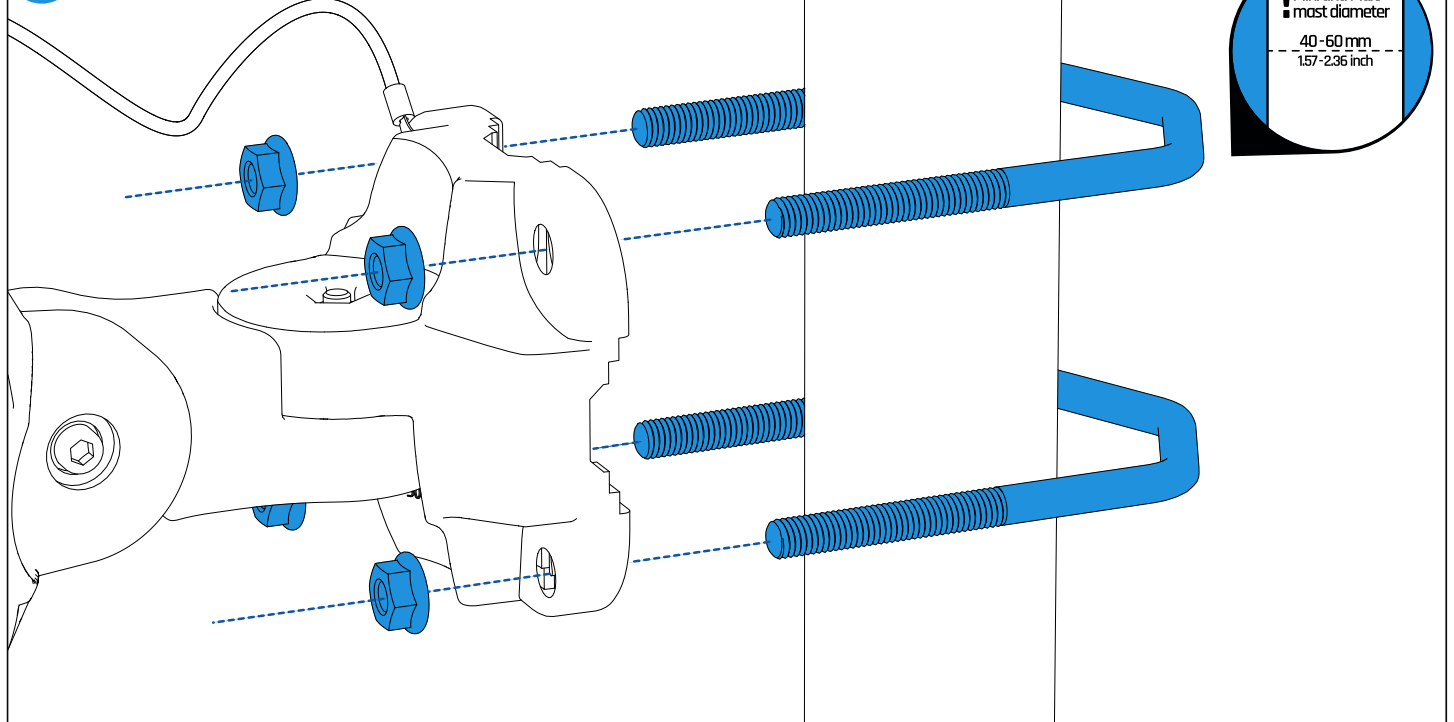
WiMount Installation



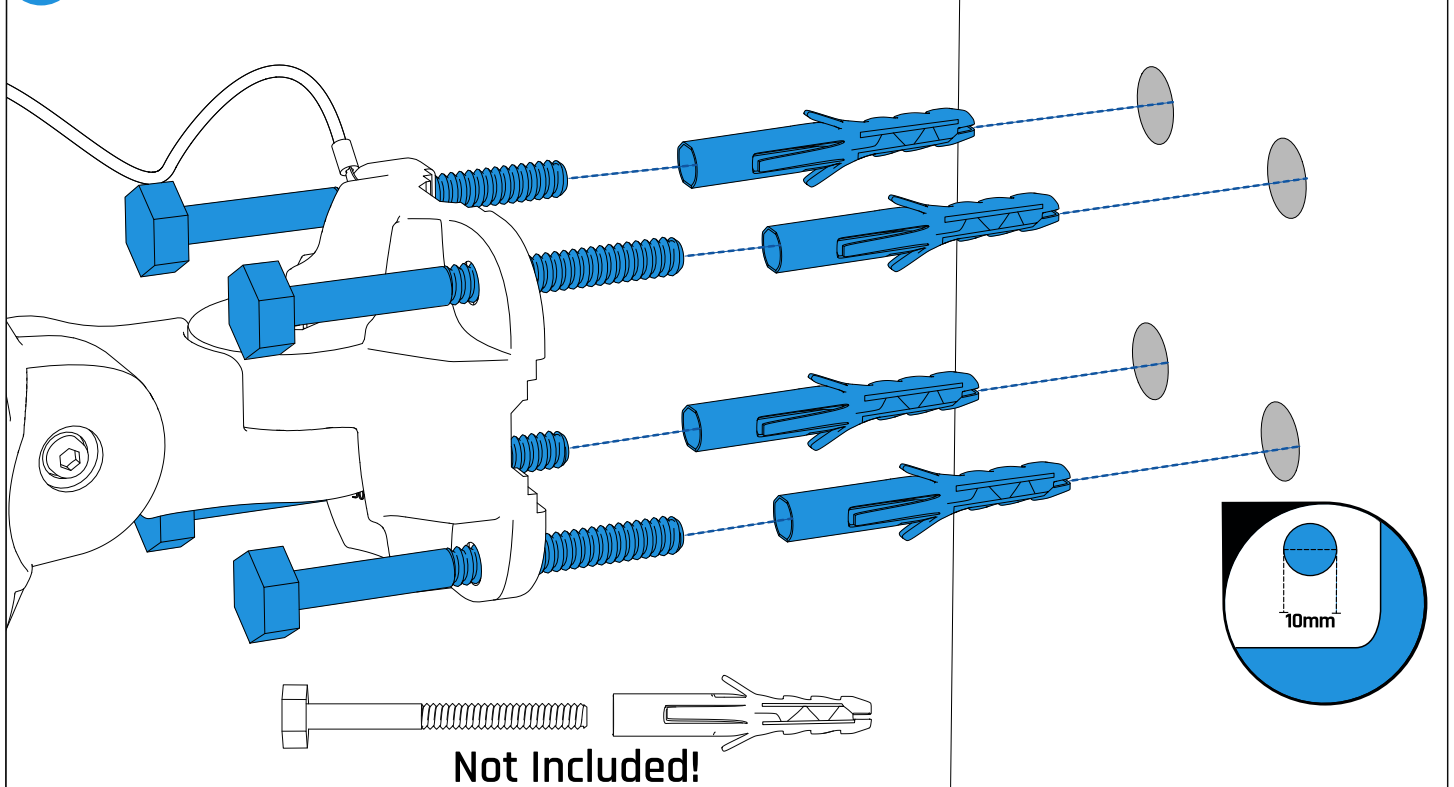
Mast and Wall Installation



10_a MAST - Standard



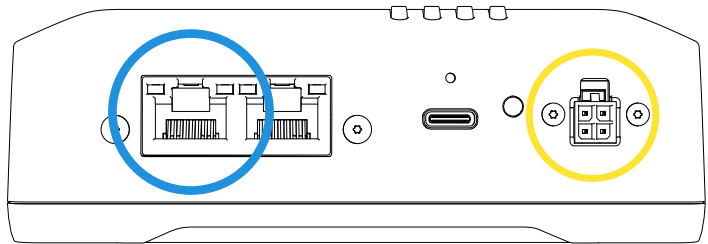
10_b WALL



11 POE Power Supply - STANDARD



Please note that Semtech XR60 router does NOT support Passive PoE on the ETH port



Before connecting PoE to your router, please check specification of your model. Connecting PoE to model that's not supporting PoE can damage your router.

For power supply, you can use any Gigabit Passive PoE power supply with a voltage of 9-30V.

You can use, for example, a power supply from our offer: [QuPSU GP241](#)

Please note that the Passive PoE power supply is not included.



LAN **AC**

