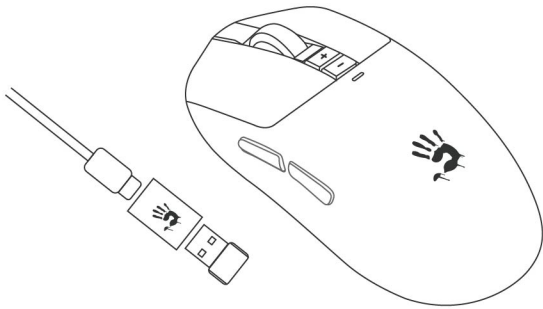


30\*70 mm



R72 Ultra

## QUICK START GUIDE



## WHAT'S IN THE BOX



Wireless Mouse



Nano USB Receiver



USB Type-C Adaptor



USB to Type-C Adaptor



USB Type-C Cable



Mouse Feet

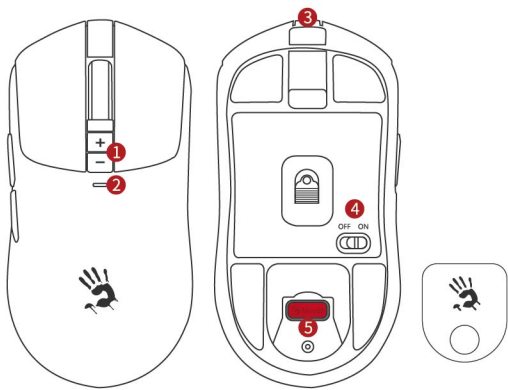


User Manual



Grip Tape

## KNOW YOUR PRODUCT

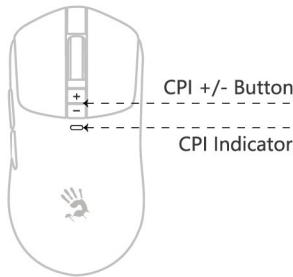


- ① CPI + / - Adjustable
- ② Function Indicator
- ③ Type-C Input Port
- ④ Power Switch
- ⑤ 2.4G Receiver Storage

## CPI ADJUSTABLE



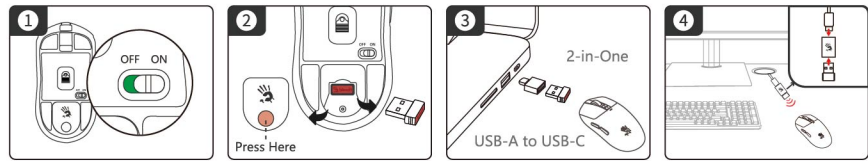
Press the CPI +/- button to switch between the default resolutions: 400, 800, 1000, 1200, 1600, 2,000 CPI. Adjustable via software: 50 ~ 20,000 CPI.



Indicator	Default Resolution
	400 CPI
	800 CPI
	1000 CPI
	1200 CPI
	1600 CPI
	2000 CPI

\*If the CPI button is not clicked for 15s, the indicator will turn off automatically.

## CONNECT 2.4G NANO RECEIVER

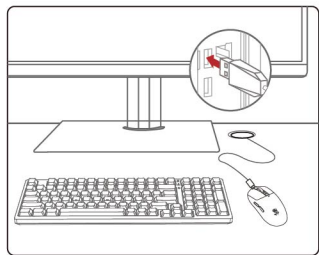


- ① Turn the mouse power switch on.
- ② Press to pop up the lid. Take out the Nano Receiver and put the lid back.
- ③ **Laptop Use:** Plug the receiver into the laptop's USB port or use the Type-C adaptor to connect the receiver to the laptop's Type-C port.
- ④ **Desktop Use:** Use the adaptor to connect the nano receiver to the USB Type-C cable, then plug it into the desktop for wireless signal anti-interference.

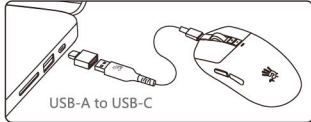
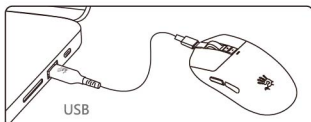
## CONNECTING USB WIRED



The mouse will switch from wireless to wired mode when the USB Type-C cable is connected. **Note:** While in wired mode, the mouse charges simultaneously.

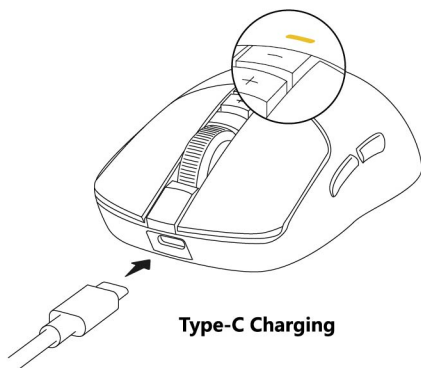


Connect to the Desktop Computer



Connect to the Laptop Computer

## CHARGING & INDICATOR



- Solid Yellow -- Charging
- No Light: Working
- Solid Green -- Fully Charged
- Flashes Red: Below 15% Battery

**75H** 15 MINUTES ≈ 20 HOURS  
Battery Life Charging Time Playback Time

## DIY DISPLAY PICTURE



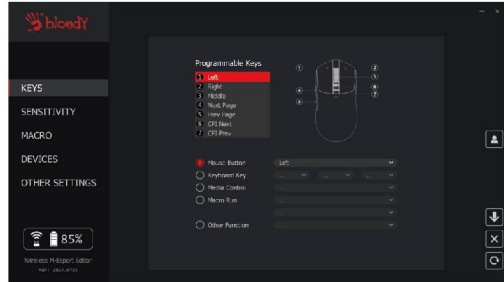
- Tailor Made Pre-Cut
- Easy to Apply



Pattern images of the grip tape are for reference only, shall be subjected to the actual product.

## WIRELESS M-ESPORT EDITOR

Optimize your mouse settings with simple combinations and programming functions. Customize buttons, sensitivity, and macros, then save them to the mouse's on-board memory.



Download Link: <http://www.bloody.com/en/download.php>

## FIRMWARE UPDATE OPERATION



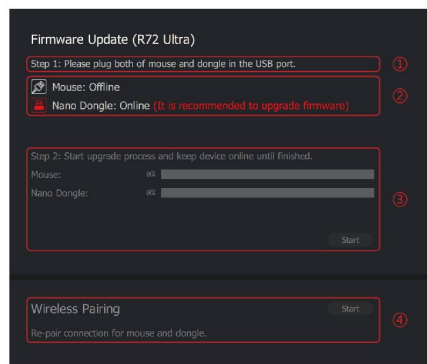
Ensure the USB connection is not interrupted during the update process.

- ① Plug both of mouse and dongle in the USB port.
- ② Confirm that the mouse and nano dongle are online simultaneously.
- ③ When prompted to upgrade the firmware, click the Upgrade button to complete the process.

**Wireless Re-pairing Operation:**

- ④ Plug in the mouse and dongle, then click the Pair Code button to re-pair.

**Note:** Only newly purchased USB Nano receivers need to be re-paired.



## Q&A



**Question** When connected in 2.4G wireless mode, the mouse sometimes lags. How can I fix this?

**Answer** Check the following:

1. Ensure the USB Nano receiver is connected to the adaptor and the USB Type-C cable is properly plugged in.
2. Make sure the wireless environment is within 30-100 cm, without obstacles or metal objects.
3. Ensure there are no strong wireless routers or other interference sources within 1 meter.

## Q&A



**Question** Wireless 1000Hz transmission is smooth like wired. Can I achieve the same with 500Hz?

**Answer** 1000Hz wireless transmission has a 1ms response time, whereas 500Hz has 2ms. Choose the appropriate report rate based on your gaming needs.

**Question** How many wireless devices can be used in the same environment?

**Answer** We recommend using 10 units or fewer. For more than 10 units, maintain a distance of 1.5m to 3m between them.

## Q&A



**Question** Will other wireless devices at home cause interference with my mouse?

**Answer** This mouse features advanced anti-interference technology:

1. Excellent interference resistance, transmitting four times within 1ms (conventional products transmit once).
2. Intelligent frequency hopping to dynamically adjust power (0-6dB), reducing the need for hopping (conventional products have fixed power).
3. The USB anti-interference extension cable creates a clean wireless environment (reducing metal and obstacle attenuation).

## TECH SPEC

Sensor:	Alpha 20K Engineered Engine
Wireless Transmission:	1ms
Operation Range:	10 m
Default Resolution:	400-800-1,000-1,200-1,600-2,000 CPI
Adjustable by Software:	50~20,000 CPI
Frame Speed:	Self-Adjusting
Adjustable by Software:	Self-Adjusting
Acceleration:	40 G
Tracking Speed:	350 IPS
Report Rate:	1000Hz Adjustable
Battery:	300 mAh Lithium Battery
Charging Time:	≤ 1.5 Hours
Playtime:	≤ 75 Hours
Micro-Switch:	Over 30 Million Clicks (Left / Right Button)
Wheel:	Over 800,000 Scrolls
USB Type-C Soft Braided Cable:	180 cm
Size:	125 x 63 x 40 mm
Weight:	70 g (w/o cable)

## WARNING STATEMENT



The following actions may cause damage to the product:

1. Disassembling, bumping, crushing, or throwing into the fire can cause irreparable damage due to lithium battery leakage.
2. Avoid exposing to strong sunlight.
3. Follow local laws for battery disposal; recycle if possible. Improper disposal may cause fire or explosion.
4. Avoid charging in environments below 0°C.
5. Do not remove or replace the battery.
6. Do not use chargers with outputs from 6V to 24V. Use a 5V charger to avoid damage.



[www.Bloody.com](http://www.Bloody.com)

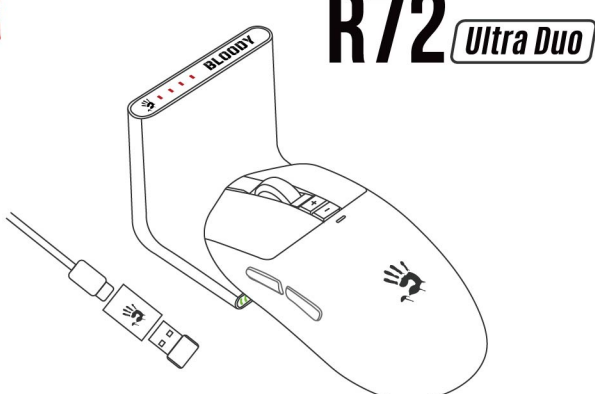


Scan for E-Manual

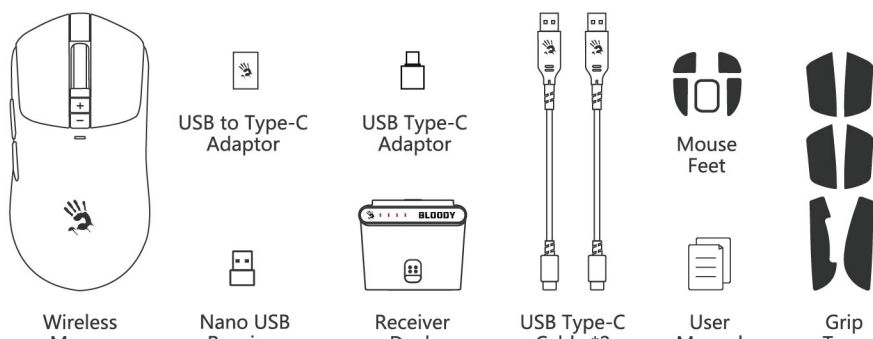




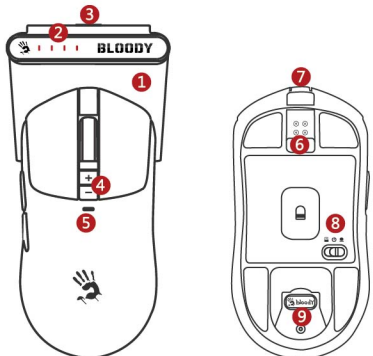
# QUICK START GUIDE



## WHAT'S IN THE BOX



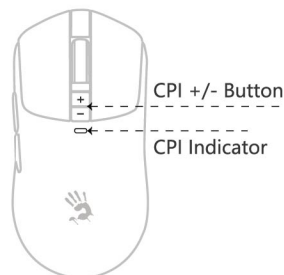
## KNOW YOUR PRODUCT



- ① L++ Multi-Function Charging Dock
- ② Four-Stage Battery Indicator
- ③ Dock Type-C Input Port
- ④ CPI + / - Adjustable
- ⑤ Function Indicator
- ⑥ Snap-On Magnetic Charging
- ⑦ Mouse Type-C Input Port
- ⑧ Dual 2.4G Receiver Switch
- ⑨ 2.4G Receiver Storage

## CPI ADJUSTABLE

Press the CPI +/- button to switch between the default resolutions: 400, 800, 1000, 1200, 1600, 2,000 CPI. Adjustable via software: 50 ~ 20,000 CPI.



Indicator	Default Resolution
	400 CPI
	800 CPI
	1000 CPI
	1200 CPI
	1600 CPI
	2000 CPI

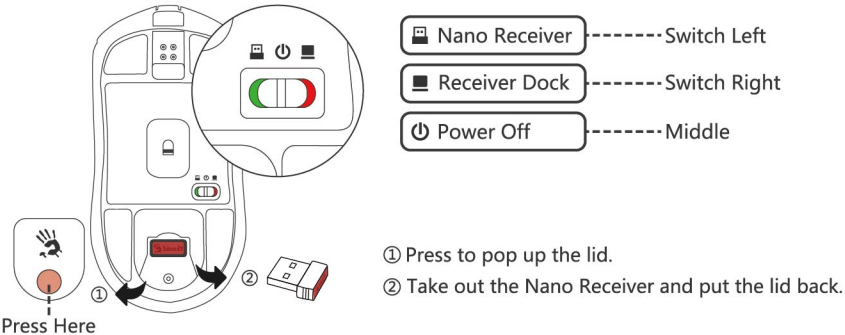
\*If the CPI button is not clicked for 15s, the indicator will turn off automatically.

## DUAL 2.4G RECEIVER

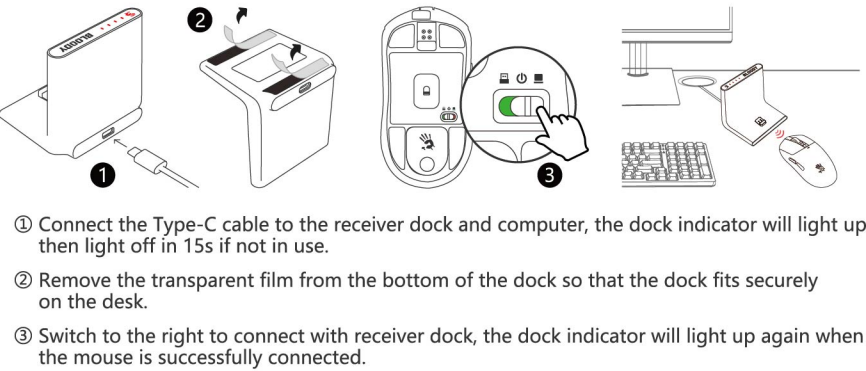
Receiver	L++ Multi-Function Receiver Dock	USB Nano Receiver
Function Comparison	<ul style="list-style-type: none"><li>① Superior Signal Stability</li><li>② Seamless Instant Pairing</li><li>③ Magnetic Quick-Charge Snap-On Magnetic Charging</li><li>④ Four-Stage Battery Indicator</li><li>⑤ 1000Hz Report Rate</li><li>⑥ Desktop Use</li></ul>	<ul style="list-style-type: none"><li>① Superior Signal Stability</li><li>② 1000Hz Report Rate</li><li>③ Travel Portable</li></ul>

## DUAL 2.4G RECEIVER SWITCH

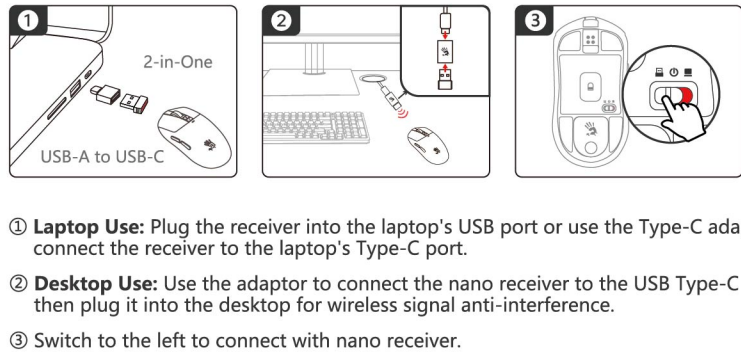
If both receivers are connected, you can choose the active one using the switch on the bottom of the mouse.



## CONNECT RECEIVER DOCK

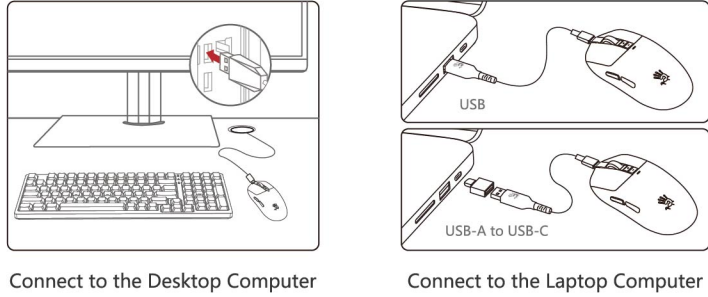


## CONNECT 2.4G NANO RECEIVER



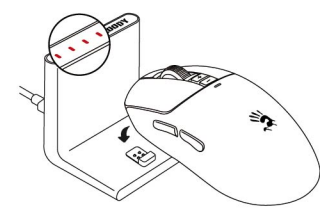
## CONNECTING USB WIRED

The mouse will switch from wireless to wired mode when the USB Type-C cable is connected. **Note:** While in wired mode, the mouse charges simultaneously.



## CHARGING & INDICATOR

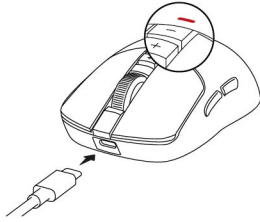
### ① Dock Charging



Dock Indicator (Battery Level)

25%   75%  
 50%   100%

### ② Type-C Charging

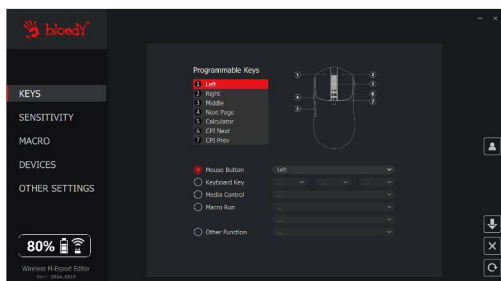


Mouse Indicator

-- Charging   -- Fully Charged  
 -- Working   -- Below 15% Battery

## WIRELESS M-ESPORT EDITOR

Optimize your mouse settings with simple combinations and programming functions. Customize buttons, sensitivity, and macros, then save them to the mouse's on-board memory.



Download Link: <http://www.bloody.com/en/download.php>

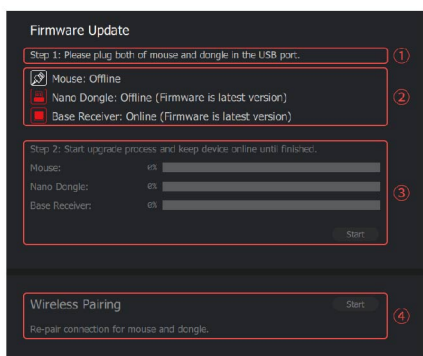
## FIRMWARE UPDATE OPERATION

- Ensure the USB connection is not interrupted during the update process.
- ① Plug both the mouse and dongle into the USB port.
  - ② Confirm that the mouse and dual receivers are online simultaneously.
  - ③ When prompted to upgrade the firmware, click the Upgrade button to complete the process.

### Wireless Re-pairing Operation:

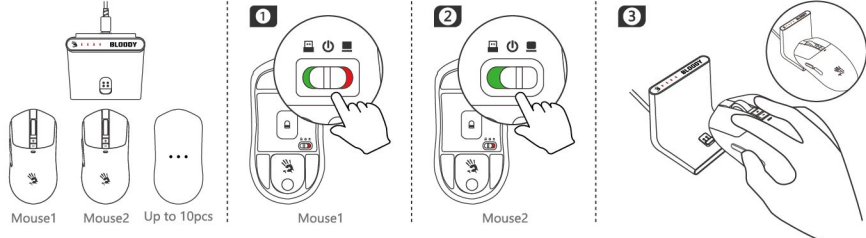
- ④ Plug in the mouse and the dual wireless receiver, then click the Pair Code button to re-pair.

**Note:** Only newly purchased USB Nano receivers need to be re-paired.



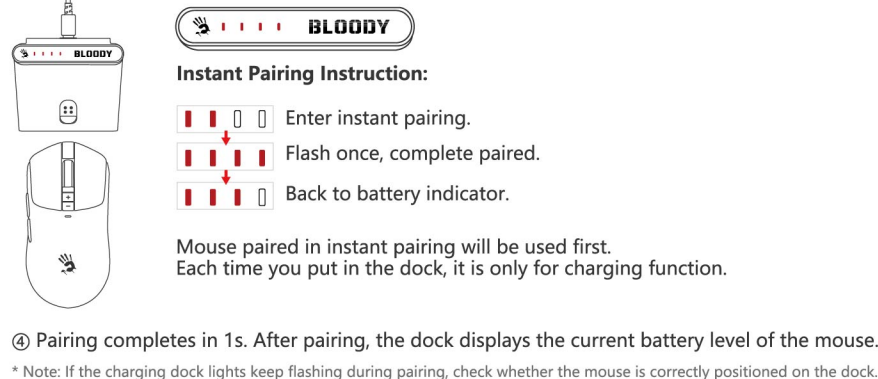
## MULTI-MOUSE PAIRING STEPS

When using the L++ multi-function dock, it can pair with multiple wireless mice that support dual-connected wireless systems. Here's how to perform random pairing.



- ① Turn off the paired Mouse 1 power (Switch Middle).
- ② To pair Mouse 2, switch to Dock mode (Switch Right).
- ③ The mouse will snap-on magnetically for instant pairing.

## MULTI-MOUSE PAIRING STEPS



## Q&A

- Question** When connected in 2.4G wireless mode, the mouse sometimes lags. How can I fix this?
- Answer** Check the following:
1. Ensure the USB Nano receiver is connected to the adaptor and the USB Type-C cable is properly plugged in.
  2. Make sure the wireless environment is within 30-100 cm, without obstacles or metal objects.
  3. Ensure there are no strong wireless routers or other interference sources within 1 meter.

## Q&A

- Question** Wireless 1000Hz transmission is smooth like wired. Can I achieve the same with 500Hz?
- Answer** 1000Hz wireless transmission has a 1ms response time, whereas 500Hz has 2ms. Choose the appropriate report rate based on your gaming needs.

- Question** How many wireless devices can be used in the same environment?
- Answer** We recommend using 10 units or fewer. For more than 10 units, maintain a distance of 1.5m to 3m between them.

## Q&A

- Question** Will other wireless devices at home cause interference with my mouse?
- Answer** This mouse features advanced anti-interference technology:
1. Excellent interference resistance, transmitting four times within 1ms (conventional products transmit once).
  2. Intelligent frequency hopping to dynamically adjust power (0-6dB), reducing the need for hopping (conventional products have fixed power).
  3. The USB anti-interference extension cable creates a clean wireless environment (reducing metal and obstacle attenuation).

## TECH SPEC

Sensor:	Alpha 20K Engineered Engine
Wireless Transmission:	1ms
Operation Range:	10 m
Default Resolution:	400-800-1,000-1,200-1,600-2,000 CPI
Adjustable by Software:	50~20,000 CPI
Frame Speed:	Self-Adjusting
Adjustable by Software:	Self-Adjusting
Acceleration:	40 G
Tracking Speed:	350 IPS
Report Rate:	1000Hz Adjustable
Battery:	300 mAh Lithium Battery
Charging Time:	≤ 1.5 Hours
Playtime:	≤ 75 Hours
Micro-Switch:	Over 30 Million Clicks (Left / Right Button)
Wheel:	Over 800,000 Scrolls
USB Type-C Soft Braided Cable:	180 cm
USB Type-C PVC Cable:	180 cm
Size:	125 × 63 × 40 mm
Weight:	70 g (w/o cable)

## WARNING STATEMENT

The following actions may cause damage to the product:

1. Disassembling, bumping, crushing, or throwing into the fire can cause irreparable damage due to lithium battery leakage.
2. Avoid exposing to strong sunlight.
3. Follow local laws for battery disposal; recycle if possible. Improper disposal may cause fire or explosion.
4. Avoid charging in environments below 0°C.
5. Do not remove or replace the battery.
6. Do not use chargers with outputs from 6V to 24V. Use a 5V charger to avoid damage.



[www.Bloody.com](http://www.Bloody.com)



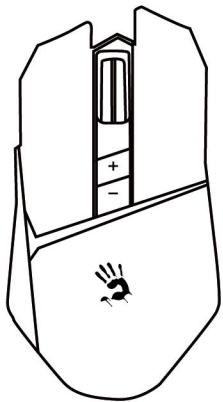
Scan for E-Manual



130\*70 mm



## QUICK START GUIDE



WAVELINK  
CONNECTIVITY

R36 Ultra



## WHAT'S IN THE BOX



Wireless Mouse



Nano USB Receiver



Anti-Interference Extension Dock



Teflon Boot

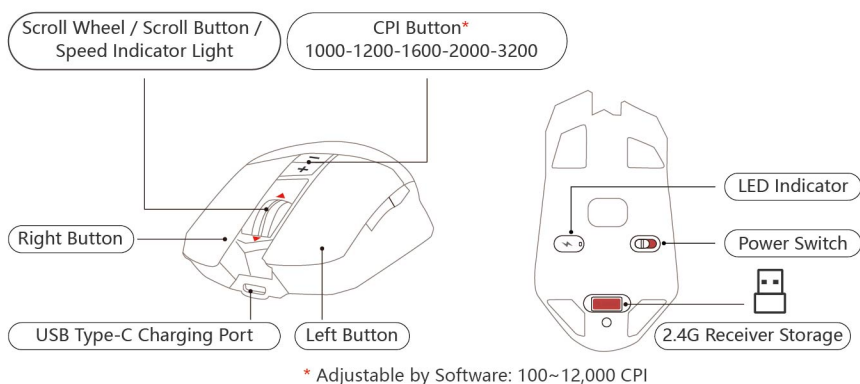


USB Type-C Cable

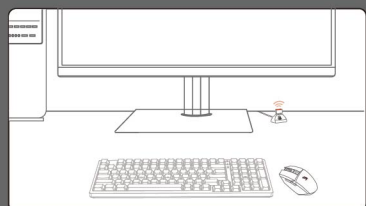


User Manual

## KNOW YOUR PRODUCT

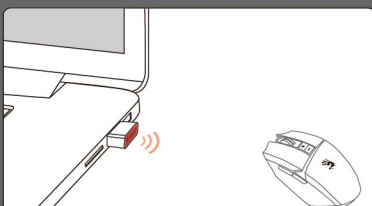


## CONNECTING 2.4G DEVICE



### ① Connect to the Desktop Computer

Connect the extension dock to the host computer, and plug the nano receiver into the extension cord. Place it in front of the mouse, with no obstructions between it.

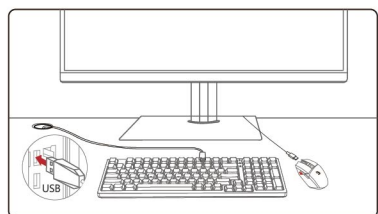


### ② Connect to the Laptop Computer

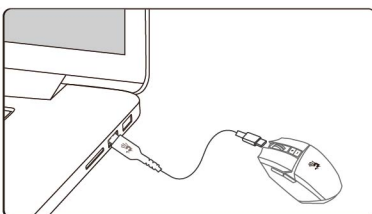
Connect the nano receiver to the laptop computer with no obstructions between the mouse.

## CONNECTING USB WIRED

The mouse switches from wireless mode to wired mode when the USB Type-C cable is plugged in.



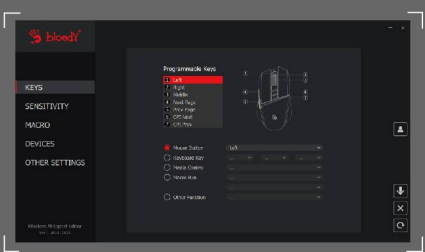
### Connect to the Desktop Computer



### Connect to the Laptop Computer

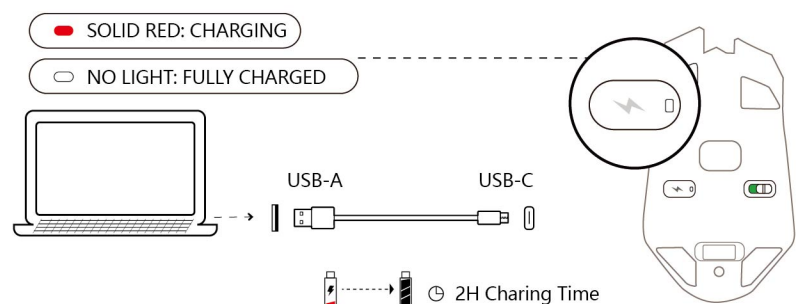
## WIRELESS M-ESPORT EDITOR

Provide the mouse with simple combination settings and programming functions. Players can optimize the most suitable game configuration by buttons, sensitivity, and combination macros, then save it to the mouse on-board memory.

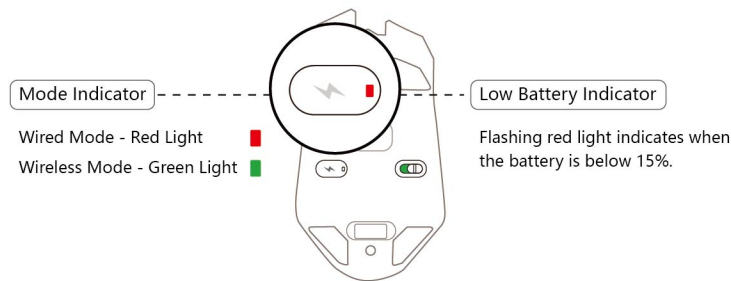


Download Link: <http://www.bloody.com/en/download.php>

## CHARGING & INDICATOR



## INDICATOR



## Q & A

**Question** How to switch wireless or wired mode?

**Answer** Plug in the USB cable to connect with wired mode.  
Plug in the 2.4G nano receiver to switch to wireless mode.

**Question** When connected with 2.4G wireless mode, the mouse occasionally experiences intermittent lag. How can I solve this problem?

**Answer** Please follow the steps below to check.

1. Whether the receiver is inserted in the USB anti-interference extension cable seat.
2. Whether the wireless environment is used within 30~100cm, and no obstacles and metal objects cover.
3. Whether there is a strong power wireless router or other wireless transmitter interference source within 1 meter around.

## Q & A

**Question** Wireless 1000Hz transmission is smooth and like wired, can I achieve the same effect with 500Hz?

**Answer** The wireless transmission of 1000Hz is 1ms, while for 500Hz is 2ms.  
The players can select the proper report rate during the game experience.

**Question** Is there a maximum number of wireless products that can be used in the same environment?

**Answer** We recommend 10 units or less. (For more than 10 units, it is recommended to be 1.5m~3m apart)

## Q & A

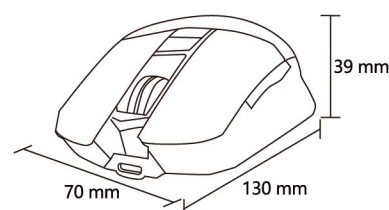
**Question** There are some wireless devices at my home. Will this cause signal interference when I use the mouse via wireless mode?

**Answer** This wireless mouse has powerful wireless anti-interference technology as follows:

1. Excellent anti-interference, transmit four times in 1 ms.  
(Conventional wireless products transmit only one signal)
2. Intelligent frequency hopping mechanism, the same frequency interference can be dynamically adjusted to transmit power 0 ~ 6db, reducing the need for wireless frequency hopping.  
(Conventional wireless products are fixed transmission power)
3. With USB anti-interference extension cable can create a clean wireless environment.  
(Reduce the attenuation of metal and obstacles on the wireless performance)

## TECH SPEC

Sensor: PAW3313 Gaming Optical Engine  
Wireless Transmission: 1ms  
Operation Range: 10 m  
Default Resolution: 1000-1200-1600-2000-3200 CPI  
Adjustable by Software: 100~12,000 CPI  
Frame Speed: Self-Adjusting  
Acceleration: 35 G  
Tracking Speed: 300 IPS  
Report Rate: 1000Hz Adjustable  
Wireless Transmission: 1 ms  
Micro-Switch: Over 20 Million Clicks (Left / Right Button)  
Wheel: Over 800,000 Scrolls  
USB Type-C Charging Cable Length: 180 cm  
USB Extension Dock Cable Length: 120 cm  
Size: 130 x 70 x 39 mm  
Weight: 89 g (w/o cable), 126 g (w/ cable)  
Color: Stone Black



## WARNING STATEMENT

The following actions may/will cause damages to the product.

1. To disassemble, bump, crush, or throwing into fire, you may cause irrefutable damages in event of the lithium battery leakage.
2. Do not expose under the strong sunlight.
3. Please obey all local laws when discarding the batteries, if possible please recycle it.  
Do not dispose it as household garbage, it may cause a fire or an explosion.
4. Please try to avoid charging in the environment below 0°C.
5. Do not remove or replace the battery.
6. Forbidden to use 6V to 24V charger, otherwise the product will be burned.  
Recommended to use a 5V charger for charging.



[www.Bloody.com](http://www.Bloody.com)



Scan for E-Manual

### FCC regulatory conformance:

This device complies with Part 15 of the FCC Rules. Operation is subject to the following two conditions:

- (1) This device may not cause harmful interference.
- (2) This device must accept any interference received, including interference that may cause undesired operation.

**NOTE:** This equipment has been tested and found to comply with the limits for a **Class B** digital device, pursuant to part 15 of the FCC Rules. These limits are designed to provide reasonable protection against harmful interference in a residential installation.

This equipment generates uses and can radiate radio frequency energy and, if not installed and used in accordance with the instructions, may cause harmful interference to radio communications. However, there is no guarantee that interference will not occur in a particular installation. If this equipment does cause harmful interference to radio or television reception, which can be determined by turning the equipment off and on, the user is encouraged to try to correct the interference by one or more of the following measures:

- Reorient or relocate the receiving antenna.
- Increase the separation between the equipment and receiver.
- Connect the equipment into an outlet on a circuit different from that to which the receiver is connected.
- Consult the dealer or an experienced radio/TV technician for help

**NOTE:** The manufacturer is not responsible for any radio or TV interference caused by unauthorized modifications to this equipment. Such modifications could void the user's authority to operate the equipment.

### RF Exposure

This equipment complies with FCC radiation exposure limits set forth for an uncontrolled environment.