



## 168L Upright Frost-Free Freezer

KAHFRZU168A

Safety & Warnings	3
Overview	7
Installation	8
Operation	14
Cleaning & Care	17
Troubleshooting	19
Notes	21

# Safety & Warnings

## General Safety

- In the interest of your safety and to ensure correct use, read this user guide carefully before installing and using the appliance. To prevent accidents and unnecessary damage, all users must be familiar with the appliance's operation and safety features.
- Keep this user guide for future reference. If the appliance is moved or sold, ensure the user guide stays with it, so new users are properly informed about its use and safety.

## Children and Vulnerable Person Safety

- This appliance can be used by children aged 8 years and above, and by persons with reduced physical, sensory, or mental capabilities or lack of experience and knowledge, only if they have been properly supervised or instructed on safe use and understand the potential hazards.
- Children aged 3 to 8 may load and unload the appliance under supervision.
- Children must be supervised to ensure they do not play with the appliance.
- Children under 8 must not carry out cleaning or maintenance unless supervised.
- Keep all packaging materials out of reach of children due to the risk of suffocation.
- When discarding the appliance, unplug it, cut off the power cable (as close to the appliance as possible), and remove the door to prevent children from entering or suffering electric shock.
- If replacing an old appliance with a magnetic door seal, and the old unit has a spring lock, make the lock unusable before disposal to prevent entrapment.

## General Safety

- **Warning:** Keep ventilation openings in the appliance enclosure or built-in structure free from obstruction.
- **Warning:** Do not use mechanical devices or other means to accelerate defrosting unless approved by the manufacturer.
- **Warning:** Do not damage the refrigerant circuit.
- **Warning:** Do not use electrical appliances (e.g., ice cream makers) inside the appliance.
- **Warning:** Do not touch the light bulb after extended use as it may be hot.
- **Warning:** When positioning the appliance, ensure the power cord is not trapped or damaged.

- **Warning:** Avoid placing multiple power boards or power supplies behind the appliance.
- Do not store flammable substances (e.g., aerosol cans) inside the appliance.
- The refrigerant used (R-600a, isobutane) is environmentally friendly but flammable. Avoid damaging the refrigerant circuit.
- During transport and installation, ensure no components of the refrigerant circuit are damaged.
- Keep away from open flames and ignition sources.
- Thoroughly ventilate the area where the appliance is located.
- Do not modify or alter the appliance in any way. Damage to the cord may cause short circuits, fire, or electric shock.
- This appliance is suitable for use in:
  - Household settings.
  - Staff kitchens in shops, offices, and other work environments.
  - Farmhouses and accommodations such as hotels and motels.
  - Bed and breakfast environments.
  - Catering and similar non-retail uses.

## Electrical Safety

- All electrical components (plug, cord, compressor, etc.) must be replaced by a certified technician.
- The supplied light bulb is a 'special use' lamp and is not suitable for domestic lighting.
- Do not extend the power cord.
- Ensure the power plug is not crushed or damaged by the rear of the appliance, which could lead to overheating and fire.
- Ensure access to the power plug is always possible.
- Do not pull the power cable.
- Do not insert the plug into a loose outlet to avoid electric shock or fire.
- Do not operate the appliance without the lamp installed.
- Handle the appliance carefully when moving; it is heavy.
- Avoid touching frozen items with wet hands to prevent frostbite or skin abrasions.
- Do not expose the appliance to direct sunlight for extended periods.

## Daily Use

- Do not place hot items on plastic parts inside the appliance.
- Avoid placing food directly against the rear wall.
- Do not re-freeze food once it has thawed.
- Store frozen food according to the manufacturer's instructions.
- Do not store carbonated or fizzy drinks in the freezer compartment; they may explode and damage the appliance.
- Ice lollies can cause frost burns if consumed directly from the appliance.
- To prevent food contamination:
  - Avoid keeping the door open for extended periods, which may cause internal temperature rise.
  - Regularly clean surfaces that come into contact with food, and clean drainage systems.
  - Clean unused water tanks after 48 hours; flush water systems that have not been used for 5 days.
  - Store raw meat and fish in sealed containers, separate from other food items.
  - Two-star compartments (if applicable) are suitable for storing pre-frozen foods, making ice cubes, and ice cream.
  - One-, two-, and three-star compartments are not suitable for freezing fresh food.
  - If not using the appliance for an extended time, switch it off, defrost, clean, dry, and leave the door open to prevent mould formation.

## Care and Cleaning

- Switch off and unplug the appliance before performing maintenance.
- Do not use metal or sharp objects for cleaning or defrosting. Use a plastic scraper.
- Regularly check and clean the drain hole for defrost water. If blocked, water will collect at the bottom.

## **Installation**

- Follow all electrical connection instructions in the dedicated section.
- Unpack and inspect the appliance. Do not connect it if damaged. Report any damage immediately and retain the packaging.
- Allow the appliance to stand for at least 4 hours before connecting it to let compressor oil settle.
- Ensure adequate air circulation to avoid overheating. Follow installation guidelines.
- Position the appliance with spacers close to the wall to prevent burns from warm parts (e.g., compressor).
- Do not place the appliance near heat sources like radiators or cookers.
- Ensure the power plug remains accessible after installation.

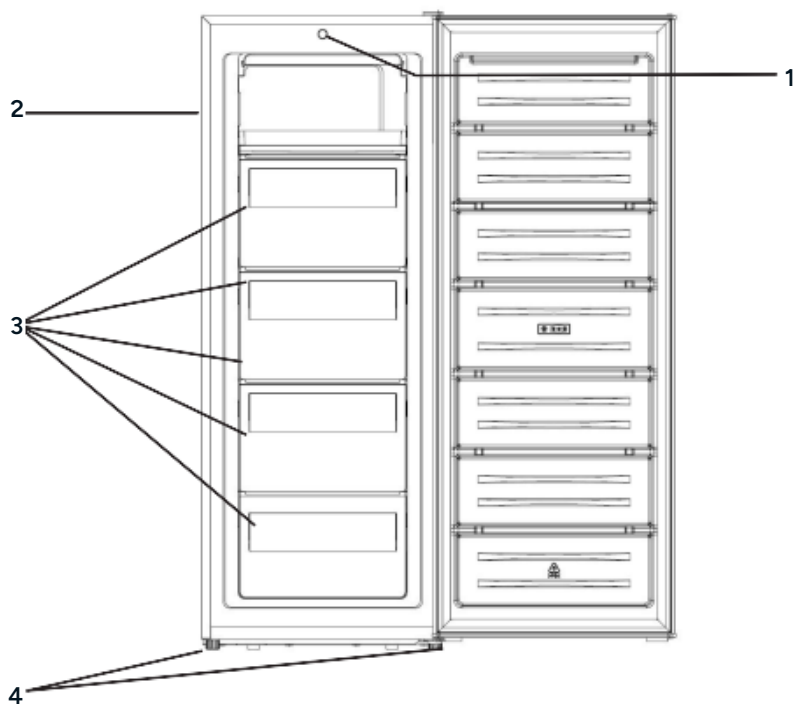
## **Service**

- Electrical servicing must be performed by qualified personnel.
- Service must be done at an authorised Service Centre using only genuine spare parts.

## **Energy Saving Tips**

- Do not place hot food inside the appliance.
- Do not overcrowd; allow air to circulate.
- Prevent food from touching the rear wall.
- If the power goes out, keep doors closed.
- Avoid frequent or prolonged door openings.
- Do not set the thermostat to excessively low temperatures.
- Keep accessories such as drawers and shelves in place for optimal energy use.

# Overview

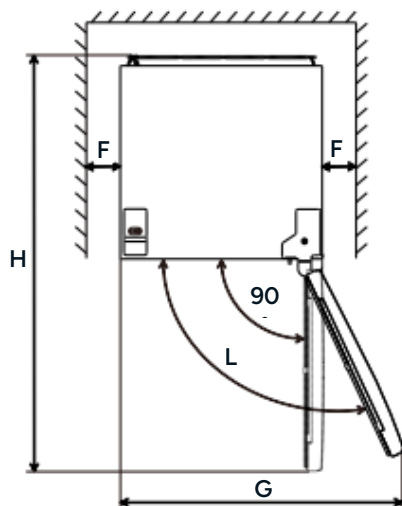
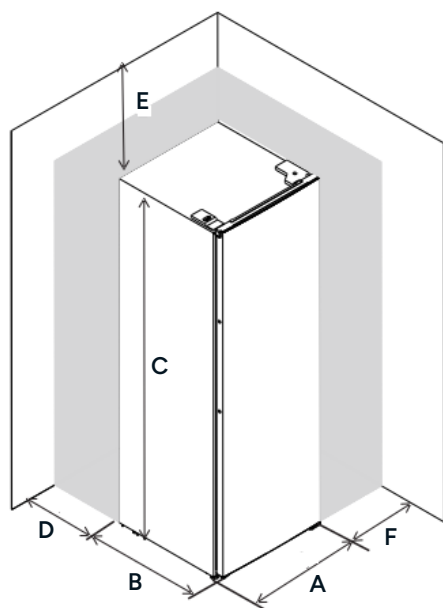


- 1 Thermostat
- 2 Shelf
- 3 Drawers
- 4 Levelling Feet

# Installation

## Space Requirements

- Ensure there is sufficient clearance for the door to open fully.
- It is recommended to maintain a minimum gap of 50mm on both sides of the appliance.



A	544mm
B	571mm
C	1426mm
D	50mm (min)
E	50mm (min)
F	50mm (min)
G	948mm
H	1115mm
L	135°

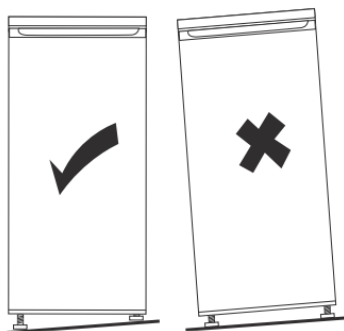
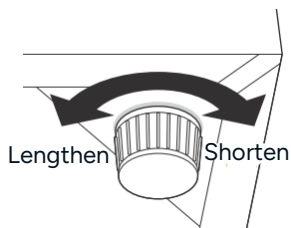


## Levelling the Unit

- To ensure proper operation, adjust the two front levelling feet of the appliance until the unit is stable and level.
- If the unit is not level, the doors may not close correctly, and the magnetic seals may not align properly, which can affect cooling performance and energy efficiency.

## Adjusting the Feet

- Turn the feet clockwise to shorten them.
- Turn the feet anticlockwise to lengthen them.



## Positioning

- Install the appliance in a location where the surrounding (ambient) temperature matches the climate class specified on the appliance's rating plate.
- The permitted ambient temperature ranges for each climate class are:
  - Extended Temperate (SN): 10°C to 32°C.
  - **Temperate (N):** 16°C to 32°C.
  - Subtropical (ST): 16°C to 38°C.
  - **Tropical (T):** 16°C to 43°C.

## Location

### **WARNING:**

The appliance must be installed so that it can be easily disconnected from the mains power supply. Ensure the power plug remains accessible after installation. This appliance is not designed for built-in installation.

- Install the appliance away from heat sources such as radiators, stoves, boilers, or direct sunlight. Ensure there is adequate air circulation around the rear of the unit for optimal performance.
- If placing the appliance under an overhead wall cabinet, maintain a minimum clearance of 50mm between the top of the unit and the cabinet.
- Ideally, avoid installing the appliance beneath overhanging wall units altogether.
- Use the adjustable feet at the base to level the appliance accurately.

## Electrical Connection

- Before connecting the appliance, verify that the voltage and frequency listed on the rating plate match your household power supply.
- The appliance must be earthed. The power plug includes a grounding contact for this purpose.
- If your electrical outlet is not grounded, a separate earth connection must be installed in accordance with local electrical regulations. Consult a qualified electrician to ensure compliance and safety.

## Reversing the Door

### Tool Required

- Philips head screwdriver.
- Flat bladed screwdriver.
- Spanner.

### Preparation

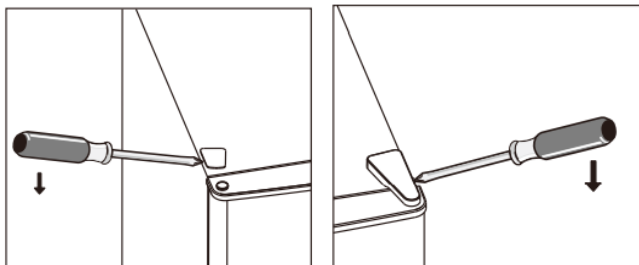
- Ensure the appliance is unplugged and empty before starting.
- Tilt the unit backward and rest it securely on a stable surface to prevent slipping during the procedure.
- Do not lay the unit flat, as this may damage the coolant system.
- Retain all removed parts for reinstallation.
- It is recommended that 2 people carry out this procedure for safety and ease.

## Reversing the Door

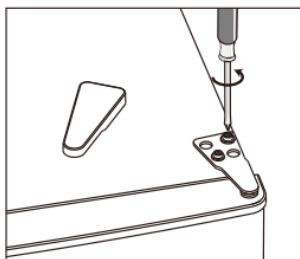
### Note:

Do not lay the appliance flat, as this may disrupt the refrigerant.

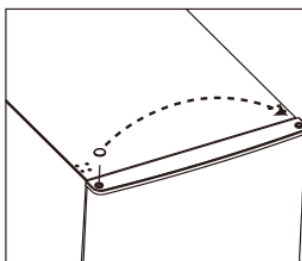
1. Use tape to hold the door closed during the door reversal process.
2. Detach the core and hinge covers on one side and the screw and core cover on the opposite side.



3. Use a Phillips head screwdriver to remove the x3 screws securing the top hinge bracket.

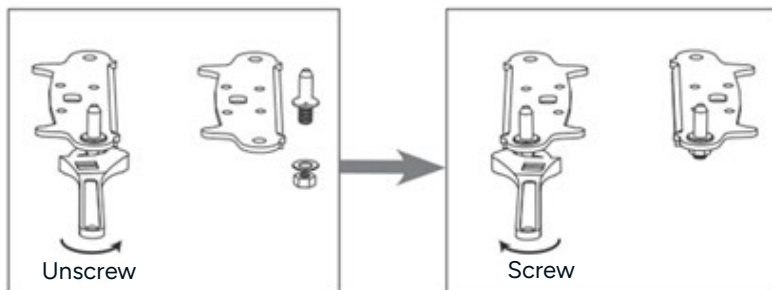


4. Detach the top hinge and flip it so the straight edge aligns with the outer edge of the freezer.
5. Use the previously removed screws to secure the hinge.
6. Fit the core and screw covers onto the opposite side.



7. Install the hinge cover on the new hinge side.
8. Gently tilt the freezer (do not lay it flat) to access the underside.
9. Unscrew the feet and remove them.
10. Use a Phillips head screwdriver to remove the lower screw on the opposite side to the lower hinge.
11. Unscrew the x2 screws and remove the hinge.
12. Move the previously removed lower screw to the opposite side.
13. Remove the hinge pin by removing the nut and washer.

- 14.** Flip the lower hinge. reinstall the hinge pin and secure in place using the washer and nuts. Tighten securely using a spanner.



- 15.** Align the hinge on the new side. Reinsert the x2 screws and tighten.

- 16.** Screw the feet back into place.

# Operation

## Cleaning the Interior

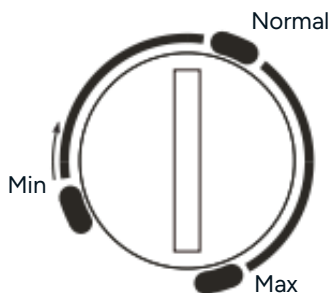
Before using the appliance for the first time, clean the interior and all internal accessories with lukewarm water and a mild neutral soap. Dry all surfaces thoroughly.

### Note:

Do not use detergents or abrasive powders, as these will damage the finish.

## Temperature Setting

- Plug in the appliance. The internal temperature is regulated by a thermostat with 3 settings: MIN, NORMAL, and MAX.
  - MIN is the warmest setting.
  - MAX is the coldest setting.
- The appliance may not maintain the correct temperature if:
  - It is placed in a very hot environment.
  - The door is opened frequently or left open for extended periods.



## Daily Use

### Food Placement Guidelines

Position different food items in different compartments according to the following recommendations.

Freezer Drawer/Shelf	Recommended Contents
Top Drawer/Shelf	<ul style="list-style-type: none"><li>• Ice cream, frozen fruit and frozen baked goods.</li></ul>
Middle Drawer/Shelf	<ul style="list-style-type: none"><li>• Frozen vegetables and chips.</li></ul>
Lower Drawer/Shelf	<ul style="list-style-type: none"><li>• Raw meat, poultry and fish.</li></ul>
All Compartments	<ul style="list-style-type: none"><li>• Foods for long-term storage.</li></ul>

### Freezing Fresh Food

- The freezer compartment is designed to freeze fresh food and store frozen or deep-frozen items long term.
- Place fresh food in the bottom compartment for optimal freezing performance.
- Refer to the appliance's rating plate for the maximum quantity of food that can be frozen in 24 hours.
- Do not add more food during the 24-hour freezing process.

### Storing Frozen Food

- When starting the appliance or after a long period of non-use, allow it to run for at least 2 hours at a high setting before placing food inside.
- **Important:** If accidental defrosting occurs (e.g., due to a power outage) consume the food quickly or cook and re-freeze it immediately.
- To maintain best performance:
  - Ensure frozen food purchased from stores was properly stored before purchase.
  - Transfer frozen items from store to freezer as quickly as possible.
  - Avoid frequent or prolonged door openings.
  - Once thawed, food must not be re-frozen as it deteriorates rapidly.
  - Always follow the storage duration recommendations provided by food manufacturers.

## **Ice-cubes**

- The appliance may include one or more trays for ice cube production.

## **Thawing**

- Frozen food can be thawed in the fridge or at room temperature, depending on how quickly you need it.
- Small items can be cooked directly from frozen; just allow for additional cooking time.

## **Helpful Hints and Tips for Freezing**

To maximise freezing performance:

- Do not exceed the 24-hour freezing capacity listed on the rating plate.
- Avoid adding additional food during the 24-hour freezing period.
- Only freeze high-quality, fresh, and thoroughly cleaned food.
- Divide food into small portions for quicker freezing and easier defrosting.
- Use airtight packaging (e.g., aluminium foil or polythene wrap) to prevent freezer burn.
- Avoid contact between fresh unfrozen food and items that are already frozen.
- Lean foods store better and longer than fatty ones.
- Salt shortens the storage life of frozen food.
- Water ices or ice lollies may cause frostbite if consumed immediately after removal.
- Label each package with the freezing date to monitor storage time.



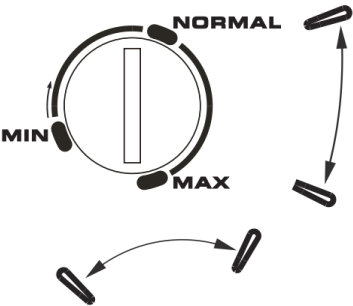
# Temperature Setting Recommendation

- This table provides general guidance for thermostat settings based on seasonal temperatures.
- At the recommended setting, frozen food should ideally be stored for no more than 1 month.
- Storage times may be shorter at other temperature settings.

Ambient Temperature

Freezer Compartment

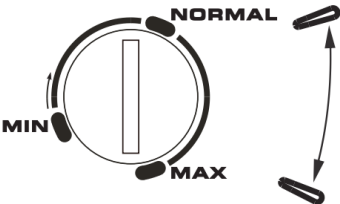
Summer



Normal



Winter



# Cleaning & Care

- For hygiene and optimal performance, the interior of the appliance, including all internal accessories, should be cleaned regularly.
- Always disconnect the appliance from the power supply before cleaning.
- Unplug the unit or switch off the circuit breaker/fuse.
- Never clean the appliance with a steam cleaner. Moisture can infiltrate electrical components, posing a risk of electric shock.
- Steam and high temperatures may also damage plastic parts.
- The appliance must be completely dry before use.
- Avoid using ethereal oils or organic solvents such as lemon juice, orange peel oil, butyric acid, or cleaners containing acetic acid. These can damage plastic components.

## Cleaning Instructions

- Do not allow corrosive substances to come into contact with appliance surfaces.
- Do not use abrasive cleaners or scrubbing tools.
- Remove all food from the freezer and store it in a cool, covered location.
- Switch off the appliance and disconnect it from the power.
- Clean the interior and accessories using a soft cloth with lukewarm water.
- Rinse with clean water and dry thoroughly with a soft cloth.
- Once a year, clean the condenser at the back of the appliance using a soft brush or vacuum cleaner to prevent dust buildup and improve energy efficiency.
- After cleaning and drying, reconnect the appliance and return it to normal use.

## Removing Frost

- Over time, frost will accumulate on the walls of the freezer. This should be removed periodically to maintain efficiency.
- Do not use sharp metal tools to scrape off frost, as this may damage the evaporator.
- When frost buildup becomes excessive, follow these steps for complete defrosting:
  - a. Unplug the appliance from the electrical outlet.
  - b. Remove all food, wrap it in several layers of newspaper, and store it in a cool place.
  - c. Leave the freezer door open and place a shallow bowl or tray beneath the unit to collect melting ice and water.
  - d. Once defrosting is complete, dry the interior thoroughly with a clean cloth.
  - e. Plug the appliance back into the outlet and resume normal operation.

## Disposal



This marking indicates that this appliance should not be disposed with other household wastes. To prevent possible harm to the environment or human health from uncontrolled waste disposal, recycle it responsibly to promote the sustainable reuse of material resources.

# Troubleshooting

- Before troubleshooting, always disconnect the appliance from the power.
- Any repair or troubleshooting not covered in this user guide must be carried out by a qualified electrician.
- Some operational noises, such as compressor hum or refrigerant flow sounds, are normal during appliance use.

Problem	Possible Cause	Solution
Appliance does not operate.	Power plug is not inserted or is loose.	Ensure the plug is firmly inserted into the outlet.
	Fuse is blown or defective.	Check and replace the fuse if necessary.
	Electrical outlet is faulty.	Have the outlet checked and repaired by a qualified electrician.
Excessive freezing.	Temperature setting is too low or set to 'MAX'.	Adjust the thermostat to a warmer setting temporarily.
Insufficient freezing.	Temperature is incorrectly set.	Refer to the Temperature Setting section for proper adjustment.
	Door has been open for too long.	Open the door only when necessary and close it promptly.
	A large amount of warm food was recently added.	Temporarily lower the temperature setting to assist cooling.
	Appliance is installed near a heat source.	Refer to the Installation section for guidance.
Heavy frost on door seal.	Door seal is not airtight.	Gently warm the seal with a hair dryer on cool setting and reshape it to ensure a proper seal.
Unusual noises.	Appliance is not level.	Re-adjust the levelling feet until the unit is stable.
	Appliance is in contact with a wall or furniture.	Move the appliance slightly away from nearby surfaces.
	Internal components (e.g., pipes) are vibrating against other parts or walls	If necessary, carefully bend the component to prevent contact.

## Notes

This image shows a full page of white paper with horizontal blue ruling lines. The lines are evenly spaced and run across the width of the page. There are no margins, text, or other markings on the paper.

[illegible]

[illegible]

### **Need more information?**

We hope that this user guide has given you the assistance needed for a simple set-up.

For the most up-to-date guide for your product, as well as any additional assistance you may require, head online to **help.Kogan.com**.

