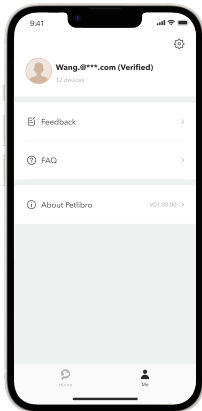


项目名称	PLAF103 视频款WIFI喂食器-单盆版-快速指南-英文		
成型尺寸	130*80 mm	材质	128g铜版纸
印刷工艺	四色印刷		
备注	三折页		

Feedback & FAQ

Go to Me > Feedback in the app to chat with a customer service staff online or send an inquiry email. You can also check the FAQ in the app.



Model: PLAF103

QUICK START GUIDE

Granary Automatic
Pet Feeder - WiFi Control 5L



KEY SECTIONS IN THE USER MANUAL

Section	Reference page in the manual
Installation	Page 06
Power on	Page 08
Recommended feeding portions	Page 15
Disassemble for cleaning	Page 16



Open the PETLIBRO app and go to DEVICE SETTINGS > Instructions for the digital manual and instructional video.

APP CONTROL

Network, router & system requirements

- The feeder supports 2.4GHz and 5GHz Wi-Fi.
- Keep the feeder close to your router for a better Wi-Fi connection. The ideal range is within 6m (19.7ft) without obstacles and walls.
- Supports iPhones running iOS 12.0 or later and Android smartphones running Android 5.0 or later.

Install the app & log in

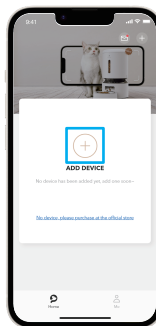
1. Scan the QR code below or search “PETLIBRO” in the App Store  or Google Play  to download the App.
2. Sign up and log into your account.



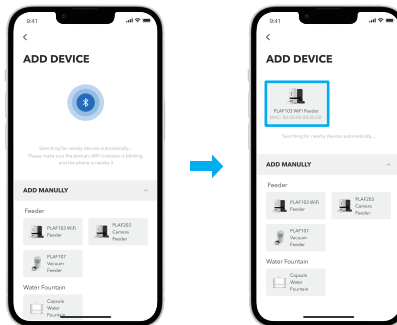
Automatically add the device

Turn on the Bluetooth and location services on your phone before adding a device.

1. Open the app and tap the “+” symbol.



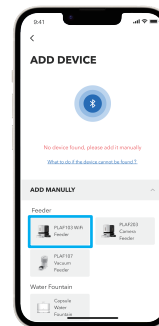
2. The app will automatically search nearby devices. Tap the device you want to add and follow the on-screen instructions.



Manually add the device

If the app can't find any devices, you can manually add the device.

1. Tap the device you want to add in the “ADD MANUALLY” list and follow the on-screen instructions.



2. Tap the device for controls.

Note: All successfully added devices will appear in the Home page.

