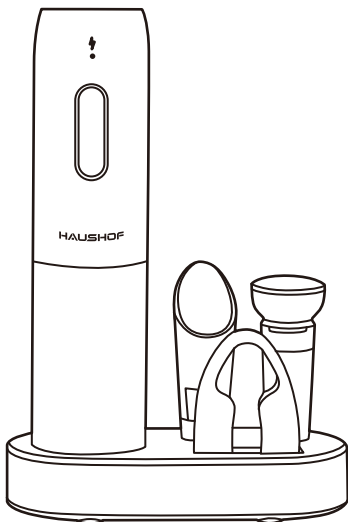


HH23104A

HAUSHOF

ORIGINAL OPERATING INSTRUCTIONS ELECTRIC WINE OPENER SET



Thank you for buying a HAUSHOF Electric Wine Opener Set. It has been engineered and manufactured to HAUSHOF's high standard for dependability, ease of operation, and operator safety. When properly cared for, it will give you years of rugged, trouble-free performance.

⚠ WARNING: To reduce the risk of injury, the user must read and understand the operator's manual before using this products.

SAVE THIS MANUAL FOR FUTURE REFERENCE

Model# KP1125



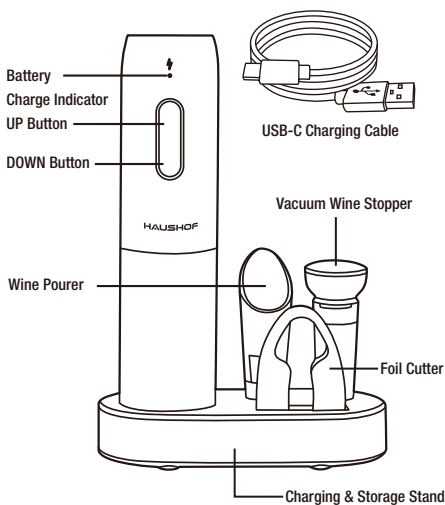
Distributed by:
Hangzhou GreatStar Industrial Co., Ltd.
No.35 Jiuhuan Road, Jiubao Town,
Hangzhou 310019, China
www.greatstartools.com
Made in China

IMPOTANT SAFETY WARNING

⚠ WARNING: Important safety information. When using electric appliances, basic safety precautions should always be followed, including the following:

- **READ THROUGH THIS ENTIRE INSTRUCTION MANUAL.**
- When using or recharging the electric wine opener, keep your workspace clean and free from potential hazards.
- Never force the wine opener onto a bottle or attempt to speed up the mechanism. The wine opener will work best when it is operated at its intended speed.
- Do not touch or adjust the wine opener's mechanism or the corkscrew spiral. Only hold the wine opener by its body.
- Do not use the unit as a handle to lift or move the inserted bottle. This may cause the bottle to fall off.
- Do not operate the wine opener after it has malfunctioned in any way, or if it has dropped or been damaged in any manner.
- Do not attempt to open bottles if the UP/DOWN button is not working correctly.
- The use of attachments not recommended or sold by the manufacturer may cause fire, electric shock, or injury.
- Charge only with the charger provided with the appliance. Do not attempt to use this charger with any other product.
- Do not let the recharging cord hang over the edge of a table or counter.
- Do not let the recharging cord contact hot surfaces, including the stove.
- To protect against the risk of electrical shock, do not put the electric wine opener in water or other liquid. This may cause personal injury and/or damage to the product.
- To protect against fire, do not operate the unit in the presence of explosive and/or flammable fumes.
- Do not incinerate this device even if it is severely damaged. Care should be taken with the rechargeable batteries, as these are flammable when exposed to heat.
- For indoor use only. Do not expose the wine opener or charging stand to rain or other extreme conditions.
- This device is not intended for use by persons (including children) with reduced physical, sensory, or mental capabilities, or lack of experience and knowledge unless they are closely supervised and instructed concerning the use of the device by a person responsible for their safety.
- Close supervision is necessary when any device is used by or near children. Children should be supervised to ensure that they do not play with the device.
- Do not use the wine opener for any other purpose than for its intended use.
- This product is intended for normal domestic household use only.
- Corkscrew is sharp. Handle carefully. Keep hands and utensils out of the container while operating to prevent the possibility of severe personal injury and/or damage to the product or property.
- For storage, it is suggested to recharge the battery between 50% and 75% charge, and charge the device at least once in 3-6 months to preserve battery lifespan.
- **SAVE THIS INSTRUCTION MANUAL.**

LAYOUT



TECHNICAL DATA

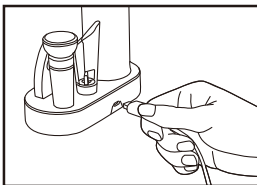
Battery voltage	Maximum 4.0V, Nominal 3.7V
Battery capacity	300 mAh
Battery type	Lithium-ion
Weight	0.36kg/0.79lbs
Battery charge voltage	5V DC
Charging time.	1.5~2.5 hours

CHARGING YOUR ELECTRIC WINE OPENER

Hazard!

Charge the equipment only with the charger cable supplied. Only place the equipment on non-flammable surfaces.

- Place the Electric Wine Opener into the Charging & Storage Stand, rotate the opener until hearing a click making sure it is tightly connected to the stand, and insert the charging cable into the charging port.(located on the back of the stand)
- Connect to power supply (DC 5V), it can be any mobile phone charger or USB port of the computer or power bank (output 5V DC).
- The charge indicator will light white to indicate the battery pack is being charged. When charging is finished, the indicator will go out.
- The battery will take approximately 1.5~2.5 hours to charge.



⚠ WARNING:

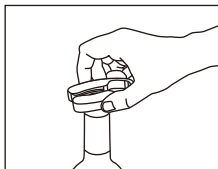
- Keep out of reach of children to avoid injuries!
- To ensure that the battery provides long service, you should take care to recharge it promptly.
- For safety considerations, never pressing the UP/DOWN Button during battery charging.

OPERATING INSTRUCTIONS

WINE OPENER

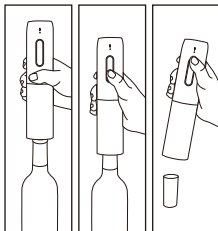
⚠ WARNING:

- Always holding the opener and wine bottle firmly during using.
- Use extreme caution when handling cutter sharp blade.
- Do not use the opener as a handle to lift or move the inserted bottle. This may cause the bottle to fall from the opener.



STEP 1: Put the foil cutter over the neck of wine bottle, pinch and rotate it 360° to remove the foil.

STEP 2: Place the Electric Wine Opener vertically on the wine bottle, remains it directly above the cork.



STEP 3: Hold the Electric Wine Opener firmly and press the DOWN Button for 6-8 seconds to fully pull out the cork. Release the button and take the opener off from the wine bottle.

STEP 4: Press the UP Button for 5-7 seconds to take the cork out of the opener.

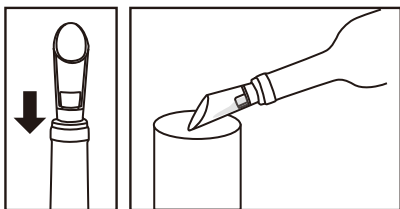
OPERATING INSTRUCTIONS

⚠ CAUTIONS:

- This product is suitable for corks with a diameter of 20 mm to 24 mm and a height of 44 mm.
- This product is suitable for wine bottles with an bottleneck outer diameter of not more than 35 mm and an bottleneck inner diameter of 17.5 mm to 23 mm.

WINE POURER

To prevent spills and leaks when pouring, and enhance aeration, improve the wine's flavor, firmly insert wine pourer into the bottle neck.



⚠ CAUTIONS:

This product is suitable for wine bottles with an bottleneck inner diameter of 17.5 mm to 19.5 mm.

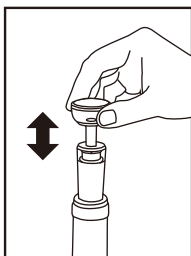
⚠ WARNING:

Do not use the pourer as a handle to lift or move the inserted bottle. This may cause the bottle to fall from the pourer.

VACUUM WINE STOPPER

To preserve your wine, it is advised to release air from the bottle to slow down oxidation.

Insert the vacuum wine stopper to the bottle firmly, pull up and down until the the pole rebounds automatically.



⚠ CAUTIONS:

This product is suitable for wine bottles with an bottleneck inner diameter of 17.5 mm to 20 mm.

⚠ WARNING:

- Do not use the stopper as a handle to lift or move the inserted bottle. This may cause the bottle to fall from the stopper.
- Once installing vacuum wine stopper storing the wine bottle upright.

NOTE:

Store the bottle in a wine cabinet or refrigerator for better preserving effects. It is recommended to finish the wine in 7 days.

CLEANING AND MAINTAINANCE

- When cleaning the opener, never press the UP/DOWN Button as a precaution.
- Electric wine opener set should be wiped clean with a damp cloth or a sponge, using a mild non-abrasive cleaner followed with a clean, dry cloth to dry it completely.
- We recommend that you clean the device immediately each time you have finished using it.
- NEVER immerse the opener set in water, or wash under running water, or wash in dish-washer.

TROUBLE SHOOTING

If the opener does not work or stops while uncorking:

- Charging the battery
- Please confirm that the wine opener is aligned with the wine bottle vertically during the opening process.
- If the above operations are all correct and the opener still works abnormally, please contact the online service center.

STORAGE

Store the equipment and accessories in a dark and dry place at above freezing temperature. The ideal storage temperature is between 5°C(41°F) and 30°C(86°F).

For storage, it is suggested to recharge the battery between 50% and 75% charge, and charge the device at least once in 3-6 months to preserve battery lifespan.

DISPOSAL AND RECYCLING

The equipment is supplied in packaging to prevent it from being damaged in transit. The raw materials in this packaging can be reused or recycled. The equipment and its accessories are made of various types of material, such as metal and plastic. Never place defective equipment in your household refuse. The equipment should be taken to a suitable collection center for proper disposal. If you do not know the whereabouts of such a collection point, you should ask in your local council offices.



DISPOSAL OF THE APPLIANCE

This product has been marked with a symbol relating to removing electric and electronic waste. This means that this product shall not be discarded with household waste but that it shall be returned to a collection system. It will then be recycled or dismantled in order to reduce the impact on the environment. Electric and electronic equipment can be hazardous for the environment and for human health since they contain hazardous substances.



Li-ion

DISPOSAL OF AN EXHAUSTED BATTERY PACK

To preserve natural resources, please recycle or dispose of the battery pack properly. This battery pack contains Li-ion batteries. Consult your local waste authority for information regarding available recycling and/or disposal options. Discharge your battery pack by operating your tool, then remove the battery pack from the tool housing and cover the battery pack connections with heavy-duty adhesive tape to prevent short circuit and energy discharge. Do not attempt to open or remove any of the components.



DISPOSAL OF THE PACKAGING

The packaging consists of cardboard and correspondingly marked plastics that can be recycled. Make these materials available for recycling.

HAUSHOF