

**Important: Read all instructions prior to installation.**

### WP6 Series

## LED Wall Pack

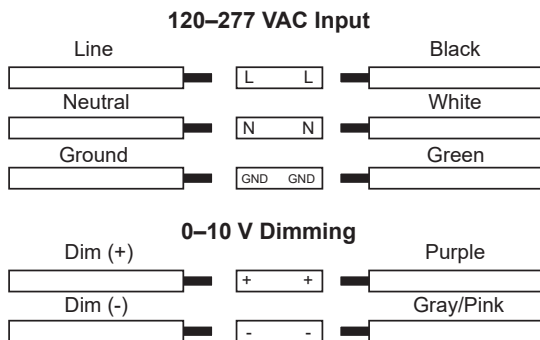


### Specifications

Model	WP6 Series
Operating Temperature	-40°–122° F (-40°–50° C)
IP Rating	IP65
Dimming	0–10 V
Photocell Operation	Light will turn on when the ambient light level falls below 30 lx and will turn off when the ambient light level exceeds 60 lx.

Check product label for specific electrical specifications related to installation.  
Improper installation will void warranty.

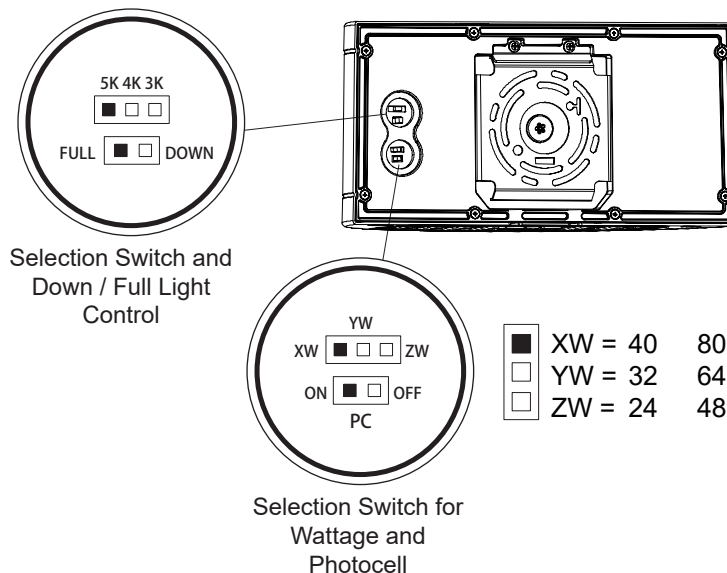
### Wiring Diagram



### Safety and Notes

- Product should be installed and serviced by a certified electrician in accordance with applicable national, state, and local building and electrical codes.
- To reduce the risk of electric shock, ensure that the main power source and circuit breakers are switched off before performing any installation or wiring procedures.
- Avoid looking directly into lamp when illuminated.
- Ensure all mounts are securely attached and will support the weight of the fixture. Failure to properly support fixture may result in damage or injury, for which the manufacturer does not assume responsibility.
- Photocell sensor can be disabled by unplugging it and capping the connector that was attached to the sensor.

### CCT and Wattage Selection

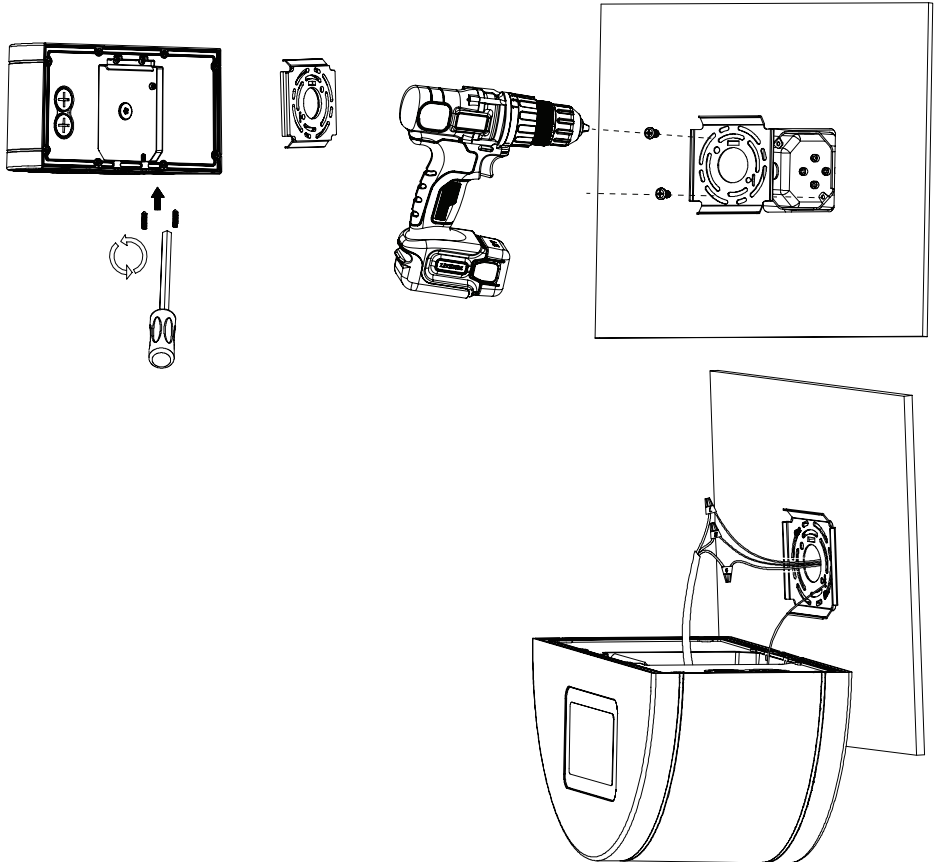


**Important: Read all instructions prior to installation.**

## LED Wall Pack

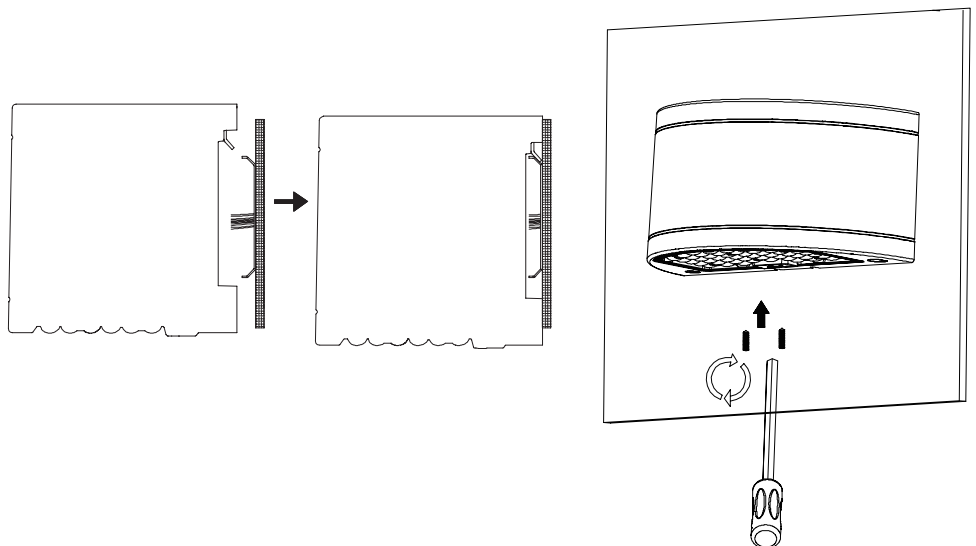
### Wall/Junction Box Installation

1. Turn off power at circuit.
2. Loosen two hex screws on fixture. Remove mounting bracket.
3. Screw mounting bracket to junction box to secure.
4. Attach safety cable. With supply power off, make all wiring connections.
5. Mount LED fixture housing to bracket.
6. Tighten two hex screws to secure LED fixture to bracket.
7. Apply supply power at circuit.



### Flush Mount Installation

1. Turn off power at circuit.
2. Loosen two hex screws on fixture. Remove mounting bracket.
3. Screw mounting bracket to flush surface to secure.
4. Attach safety cable. With supply power off, make all wiring connections.
5. Mount LED fixture housing to bracket.
6. Tighten two hex screws to secure LED fixture to bracket.
7. Apply supply power at circuit.



Rev Date: V1 05/28/2024

4400 Earth City Expy, St. Louis, MO 63045 • 866-590-3533 • [superbrightleds.com](http://superbrightleds.com)