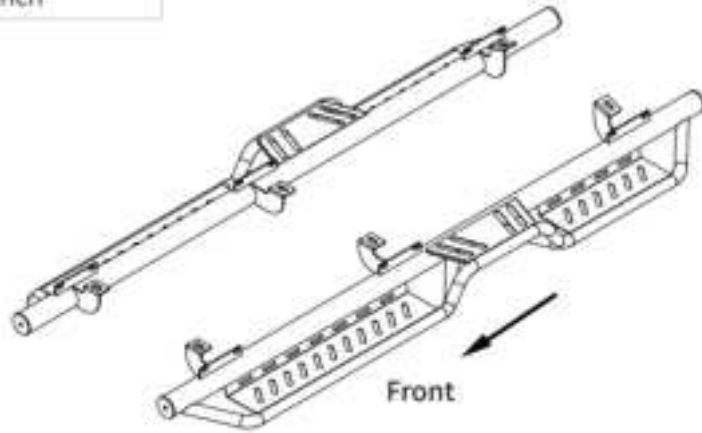


#### Tools Required

10mm 13mm Socket
10mm Wrench
Ratchet
Torque Wrench



## Before Installation:

Read this instruction carefully before starting installation.

Proper tools will improve the quality of installation and reduce the time required.

If missing parts or any damage found, please take a picture and contact us.

**Professional installation would be highly recommended.**

Periodic check to ensure all mounting hardware remains secure and tight.

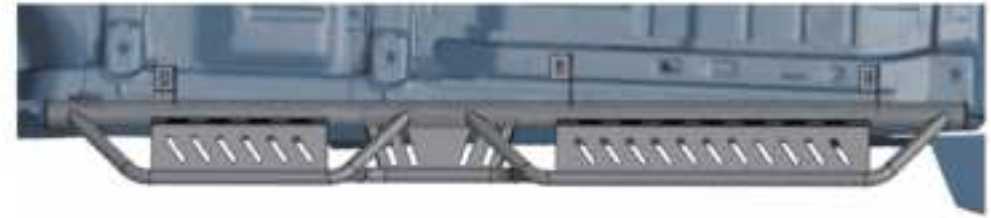
## Step 1:

1. Remove factory rock rails if equipped. Three mounting positions each side.
2. Remove (6) M6 hex nuts on rocker panel and (3) M8 hex bolts on body frame.

**Note: The step bar and factory rock rail cannot coexist.**

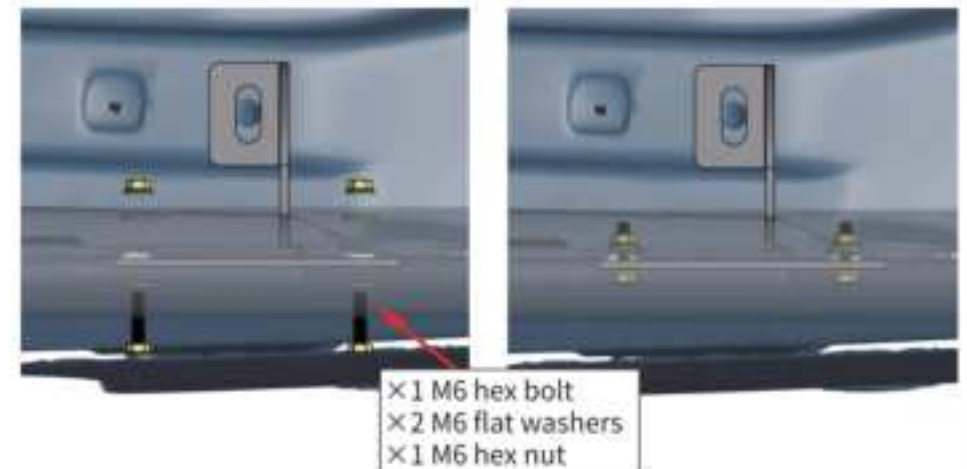
## Step 2:

1. With assistance, lift and attach the step bar to the rocker panel.
2. Align the holes on step bar with mounting holes on rocker panel.



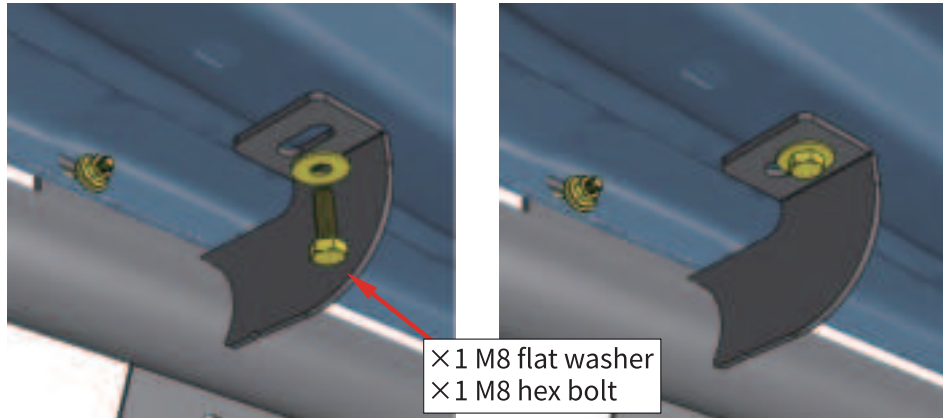
## Step 3:

1. Secure the step bar on rocker panel with (6) M6×25 hex bolts, (12) M6 flat washers, (6) M6 hex nuts.



## Step 4:

1. Secure the step bar on body frame with (3) M8×30 hex bolts, (3) M8 flat washers.



## Step 5:

1. Tighten M8 hex bolts with 15 ft. lbs. torque.
2. Tighten M6 hex bolts and nuts with 7 ft. lbs. torque.
3. After the step bar installed, periodic check to ensure all mounting hardware remains secure and tight.



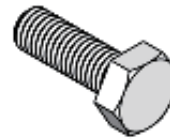
Driver Left Side



Front

## Part List:

	Qty.	Description
①	× 6	M8×30 Hexagon Bolt
②	× 12	M6×25 Hexagon Bolt
③	× 6	M8 Flat Washer
④	× 24	M6 Flat Washer
⑤	× 12	M6 Flange Nut



①



②



③



④



⑤