

2BH5BKRFTP-B

Touch Screen Control Panel



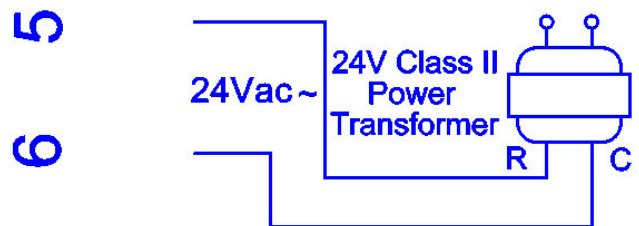
Specifications:

- Supply Voltage: 24V, 50-60Hz Rating: 0.5A
- Wireless operation :Rf Connect Button
- Working frequency: 915.055 MHz
- Working distance: 30 Meters
- Heat pump control (Heating and Cooling).
- Touch Screen
- Temperature Display Range:41°F to 95°F (5°C to 35°C)
- Temperature Control Range:44°F to 90°F (07°C to 32°C)
- Display Accuracy: $\pm 1^{\circ}\text{F}$
- Optimal Start/Stop- This feature involves algorithmically starting or stopping the system in advance. Optimal Start ensures that the set temperature is reached at the scheduled time, while Optimal Stop shuts down the system early upon PROG transition to achieve energy savings.
- Deadband: Adjustable 4 to 6 Degrees. (Default 5)
- aDifferential: adjustable from 0.5°F to 2.0°F (Default 1°F)
- 2nd Stage Offset: adjustable from 2°F to 5°F (Default 3°F)
- Boost Emergency Heat Stage (Electric) Time Variable: 5 minutes and 30 minutes (default 15 min)
- Factory program setting: 5+2/5+1+1 (Default: 5+2)

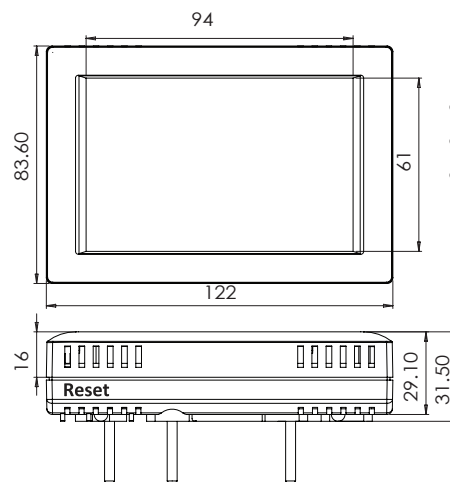
Warning:

1. Changes or modifications to this unit not expressly approved by the party responsible for compliance could void the user authority to operate the equipment.
2. To comply with FCC RF exposure compliance requirements, a separation distance of at least 20 cm must be maintained between the antenna of this device and all persons.
3. This Transmitter must not be co-located or operating in conjunction with any other antenna or transmitter.
4. This device complies with Part 15 of the FCC Rules. Operation is subject to the following two conditions: (1) this device may not cause harmful interference, and (2) this device must accept any interference received, including interference that may cause undesired operation.

Wiring Diagram



Dimensions(unit:mm)



- Length: 122mm
- Width: 83.60mm
- Height: 31.50mm