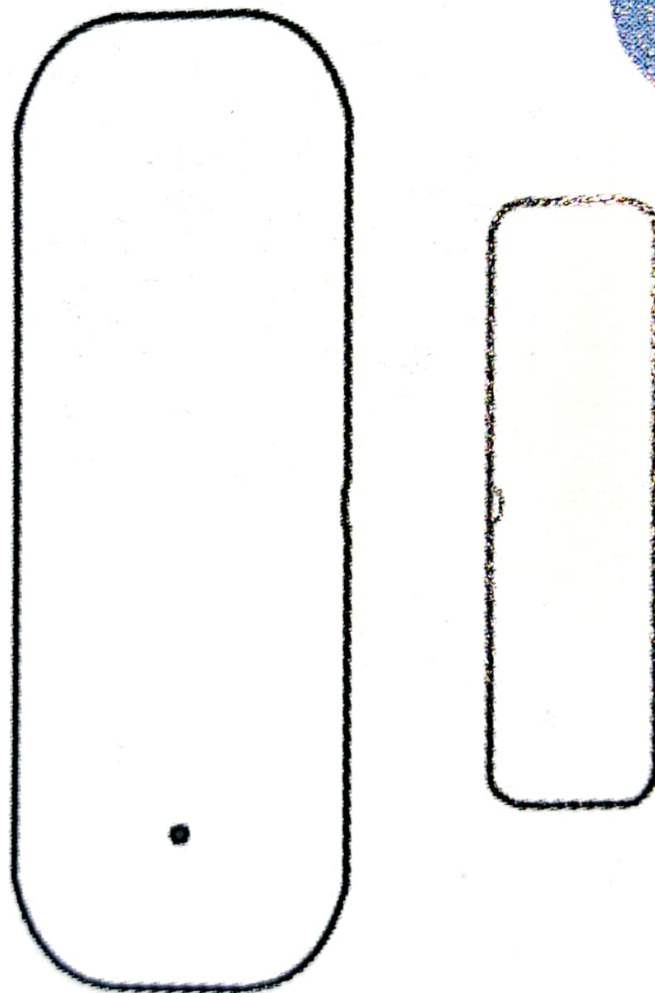


WiFi Smart Door Magnetic User Manual



*Please read this manual carefully before use
and keep it for future reference.

Manual to prevent any damage

- Tamper protection
- Low battery alert
- Alexa compatible
- OTA firmware upgrade supported

Specifications:

Input voltage: DC3V LR03

Quiescent Current: $\leq 10\mu\text{A}$

Alarm Current: $\leq 160\text{mA}$

Low power undervoltage: $\leq 2.7\text{V}$

WiFi: 802.11b/g/n

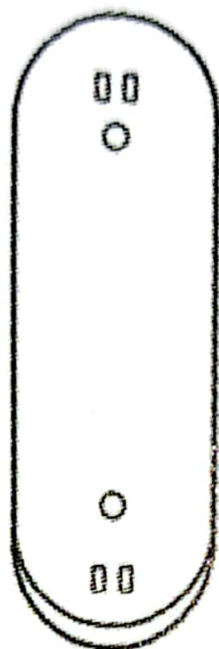
Magnetic control distance: $\geq 15\text{mm}$

Working temperature: $-10\text{--}50^{\circ}\text{C}$

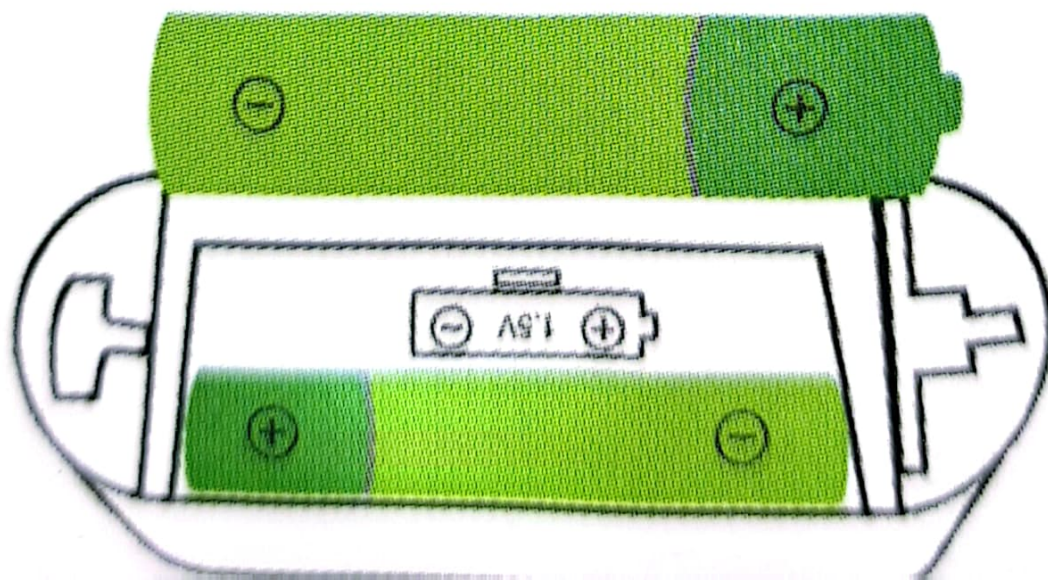
Working humidity: max 95%RH

How to use:

1. Push the mounting bracket upward and take out the bracket, then insert the battery.



2. Put the battery into the battery bin and place it according to the graphics in the battery bin. After two batteries are loaded the indicator lights are always on and then off.



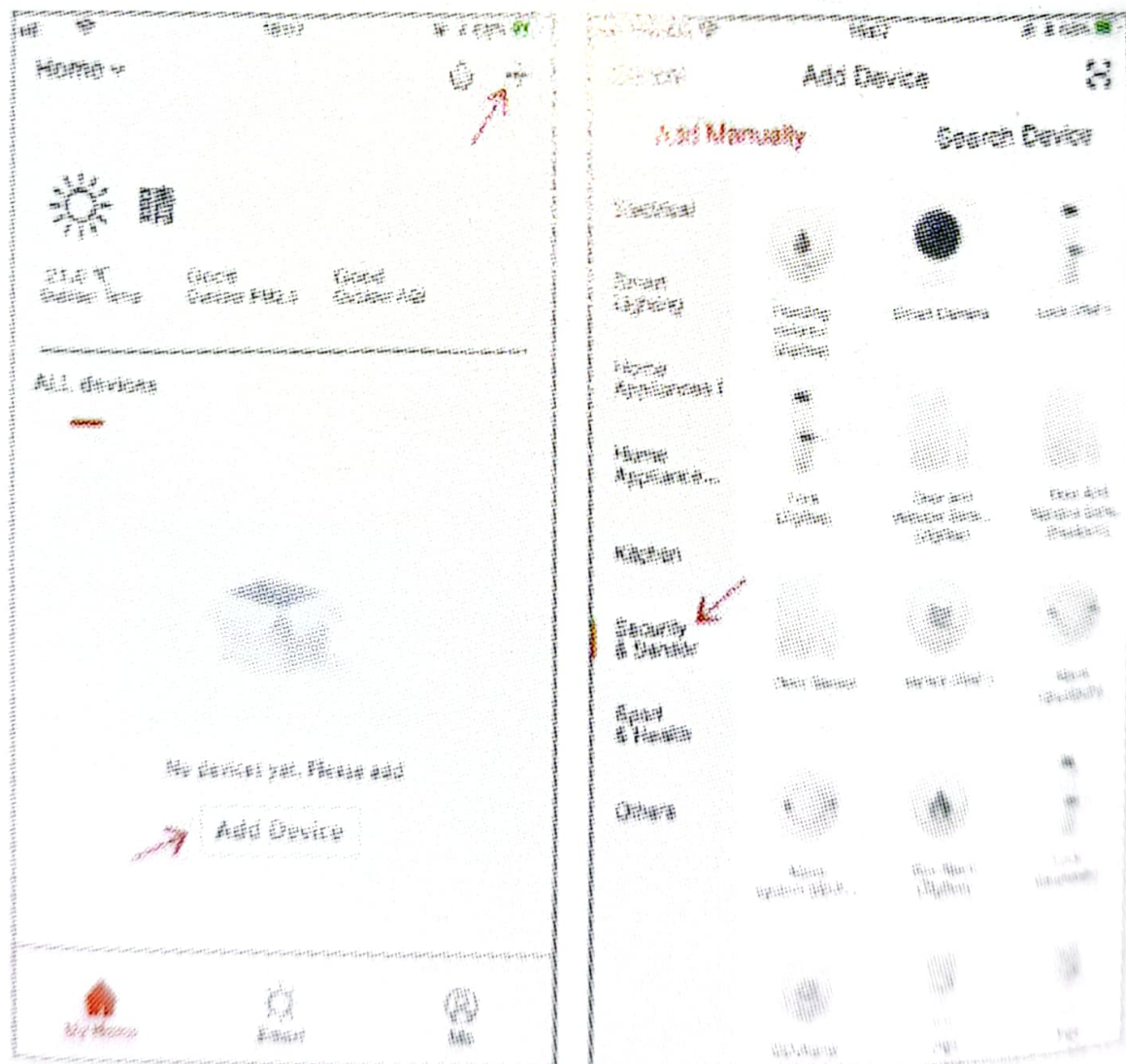
3.Download TUYA Smart APP in app store or google play store,or scan the following QR code.



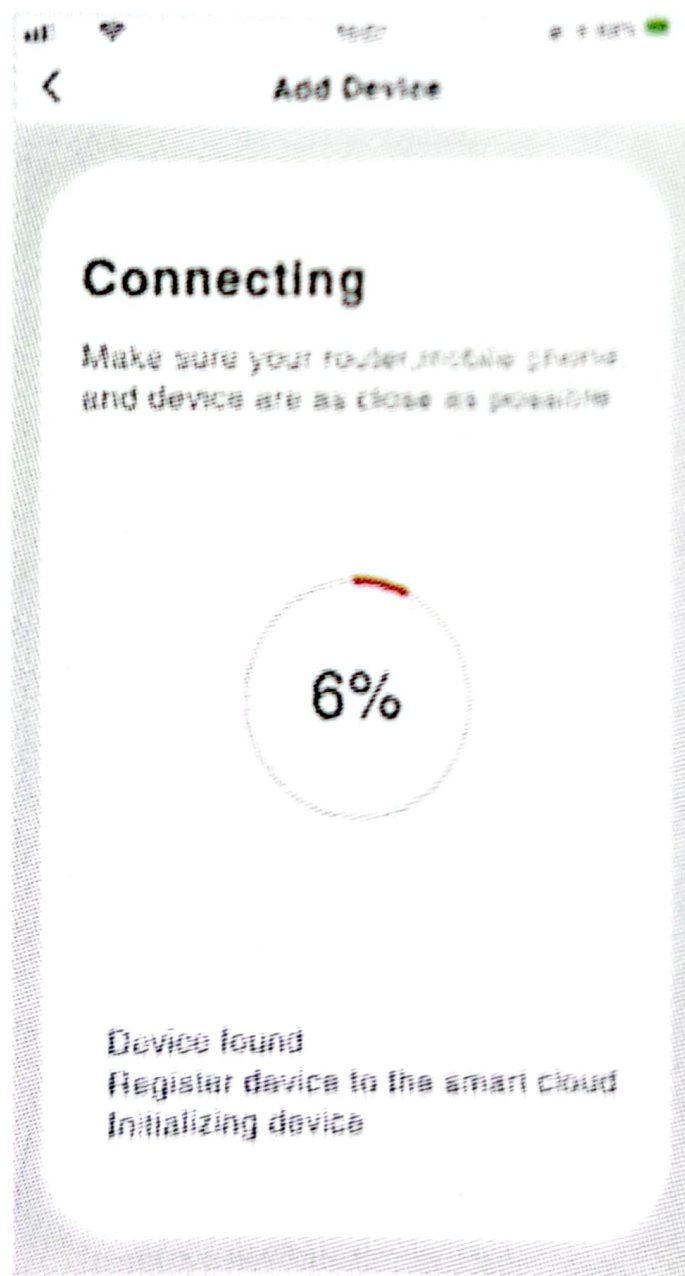
iOS/Android

4. Register with mobile phone number, click "My Home" interface "+" or click "Add Devices" in the middle blank.

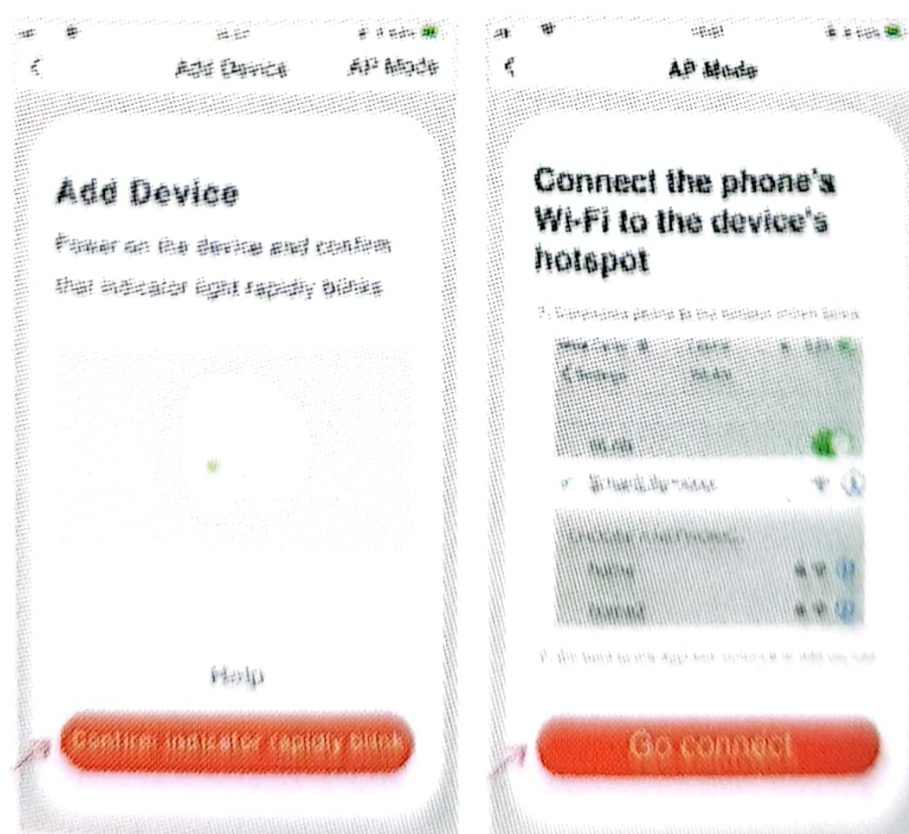
Select the security sensor and click on the door magnetic sensor.



5. With the card pick-up pin in the accessory package, hold the reset key for more than 5 seconds, and the indicator flashes into the automatic network connection mode. Enter the WiFi password according to the prompt, and click to confirm.



6. In the automatic network connection Mode, the indicator flashes quickly, holds the reset key for 5 seconds with the card pickup pin, the indicator flashes slowly, and enters the manual network connection mode. APP chooses compatible mode. According to the prompt, enter "WiFi password" and click confirmation, then switch to the WIFI settings interface. Connect Smartlife-XXXX network and return to APP to continue adding devices.



7. Network connection successfully, click on the door magnetic icon to enter the interface open the door magnetic, APP will remind you the door is open close the magnet door magnetic APP will remind you the door is closed.