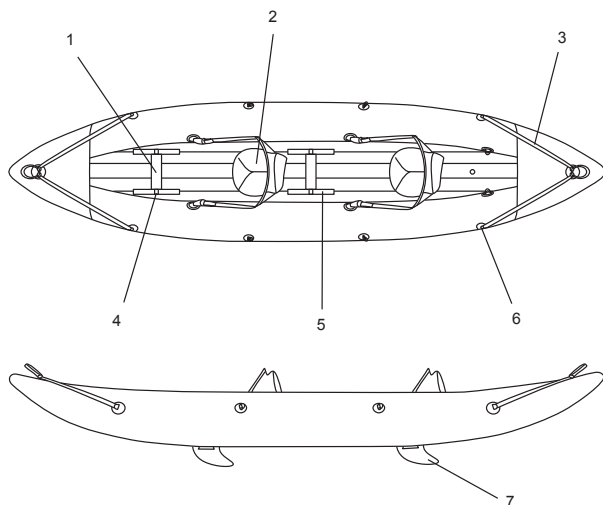
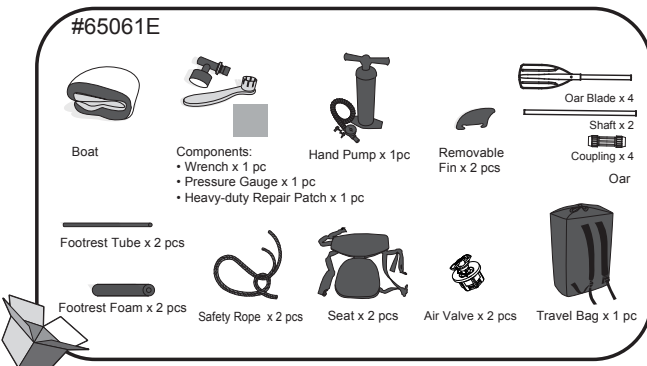


MODEL: #65061E

BOLT X2 KAYAK

OWNER'S MANUAL



NOTE: All drawings for illustration purpose only. May not reflect actual product. Not to scale.

1	2	3	4	5	6	7
Footrest Foam	Seat	Safety Rope	Footrest Tube	Belt	D-ring	Removable Fin

The boats are designed and manufactured in conformity with ABYC H-29.

Boat Design Category -"SHELTERED WATERS": Designed for voyages on sheltered coastal waters, small bays, small lakes, rivers and canals when conditions up to, and including, wind force 4 and significant wave heights up to, and including, 0.3 m may be experienced, with occasional waves of 0.5 m maximum height, for example from passing vessels.

WARNING: To avoid damage to the boat and injury to passengers, please don't exceed the data given on the builder's plate.

Technical Specifications

Item	Inflated Size	Recommended Working Pressure	Maximum Load Capacity	Maximum Number of Persons	Dry Weight
65061E	152 in. x 37 in. (3.85 m x 93 cm)	0.15 bar 2 psi	374 lbs. (170 kg)	2 adults	30.2 lbs. (13.7 kg)



Warning

IMPORTANT SAFETY INSTRUCTIONS

Follow all the Safety and Operating Instructions. If you don't follow these instructions, it may cause the boat to overturn or explode and result in drowning.

- Do not exceed the maximum recommended number of persons. Regardless of the number of persons on board, the total weight of persons and equipment must never exceed the maximum recommended load. Always use the seats /seating spaces provided.

- When loading the craft, never exceeds the maximum recommended load: Always load the craft carefully and distribute loads appropriately to maintain design trim (approximately level). Avoid placing heavy weights high up.

NOTE: The maximum recommended load includes the weight of all persons onboard, all provisions and personal effects, any equipment not included in the light craft mass, cargo (if any) and all consumable liquids(water, fuel, etc.).

- When using the boat, life saving devices such as life jackets and buoys should be pre-inspected and used at all times.

- Before every use, carefully inspect all boat components including air-chambers, grab ropes, oars, and air valves, to ensure everything is in good condition and tightly secured. If you find

any damage, please stop to repair it.

- Buckets, water scoops and air pumps should always be available in case of air leakage or if the boat takes on water.
- When the boat is in motion, all passengers must remain seated at all times to avoid going overboard. Keep the boat balanced. Uneven distribution of persons or load in the boat may cause the boat to overturn and result in drowning.
- Use the craft in sheltered water, up to 984 feet (300 m). Be careful with natural factors such as wind, tide waters and tidal waves. **BE AWARE OF OFFSHORE WINDS AND CURRENTS. Always wear a lifejacket!**
- If one chamber is punctured when the boat is in the water, it may be necessary to fully inflate the other air chamber to prevent the boat from sinking.
- Be careful when landing on the shore. Sharp and rough objects such as rocks, cement, shells, glass, etc. may punctured the boat. To avoid damage, do not drag the boat on rough surfaces.
- The boat is intended for beach use, short-time and short-distance cruising.
- Be aware of the potential harmful effects of liquids such as battery acid, oil or petrol. The liquids may damage your boat.
- Inflate according to the numbered air chamber and rated pressure of the boat, or it will cause over-inflation and potential and boat explosion. Exceeding the data given on the capacity plate may cause the craft to be damaged, overturn and lead to drowning.
- If you use the tow rings to tow the boat, go slowly to avoid over-towing as damage may occur.
- Know how to operate a boat. Check in your local area for information and/or training as needed. Inform yourself about local regulations and dangers related to boating and/or other water activities.
- The operator of a vessel is responsible for the maintenance and safe conduct of the vessel and the safety of passengers.
- Prohibit the product misuse, such as, but not limited to: (a) riding seat back, gunwale, or other unsafe position, (b) failure to use handhold, (c) overloading or improper loading, (d) excessive speed for the operating conditions, (e) using a boat in weather or sea conditions beyond the skill or experience of the operator, (f) continued operation with operator's visibility blocked or impaired (g) operating under the influence of drugs or alcohol, and/or (h) modifications.
- Boat operation where the boat operator or occupants are not under the influence of drugs and/or alcohol.
- Knowledge of federal, state, and/or local regulations concerning operation requirement, including: (a) discharge of oil, (b) solid waste disposal (Marpol Treaty), (c) marine sanitation, (d) speed, (e) noise, and (f) wake.
- Knowledge of accident reporting requirements.
- The owner of operator of a vessel is required by law to render assistance to any individual or vessel in distress, as long as his vessel is not endangered in the process.
- U.S Coast Guard Infoline: (800)368-5647. Web site: www.uscgboating.org

SAVE THESE INSTRUCTIONS

Installation

- Spread out the kayak on level ground.
- Assemble the removable fin to the bottom of the kayak (Fig.1). Make sure the curvature of the fin is pointed towards the back end of the kayak.
NOTE: Assemble the fin before inflation and also disassemble it after deflation.
NOTE: To avoid damage to the removable fin, do not enter shallow water.



Fig. 1

- Inflate the kayak by unscrewing the cap of the air valve (Fig.2 pos.1). Ensure that the inner spring valve is not depressed. If it is depressed (Fig. 2 pos. 2), press the spring valve and turn counter clockwise so the inner spring valve is in the correct position (Fig.2 pos. 3). Attached the pressure gauge onto the hose and the hose to the inflate position on the high-pressure hand pump. Inflate the kayak to 0.15 bar (2 psi). After inflation, screw the cap of air valve (Fig.2 pos. 4)
NOTE: If over-inflation occurs, press the spring valve to release air to an acceptable level and securely fasten the air valve.
NOTE: If the kayak is not in use and exposed under the sun, it may cause overexpansion and damage the kayak. Check the pressure and deflate slightly until the correct pressure is obtained.
NOTE: Pressure gauge is for inflation purpose only, and the value of the pressure gauge is just for reference, should not be used as a precision instrument.

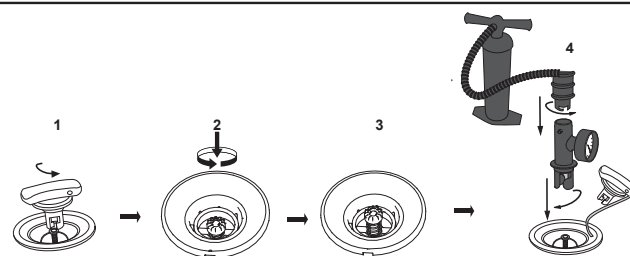


Fig. 2

4. Always carefully check and ensure the air valve is not leaking before using the kayak. If the air valve is leaking, use the provided wrench to tighten the valve. To securely tighten the valve, hold the valve from the bottom of the kayak and turn the wrench clockwise. After you have ensured the valve is not leaking, tighten the cap to close the valve. (Fig. 3)

Attention: Don't adjust the air valve when the kayak is in use.

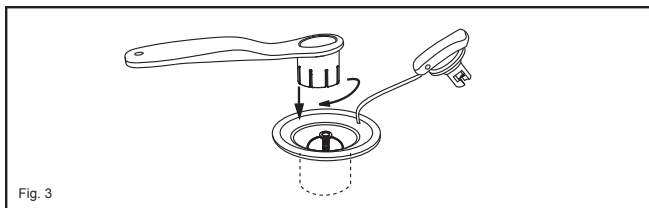


Fig. 3

5. Assemble the footrest and seat to the kayak. The footrest can be adjusted to accommodate the seat.

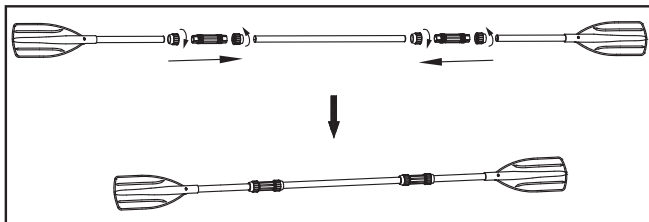
Safety rope installation

Insert the rope into the hole of the grommets orderly, then tighten the rope.

Caution: 1. Safety ropes shall be fitted to both sides of the bow and stern areas only and shall not impede the normal operation of the craft.

2. Do check carefully if the safety rope is tightened well.

Oars Installation



Storage

1. Deflate the kayak by unscrewing the cap of air valve, press the spring valve and turn clockwise.
2. Remove all the accessories from the kayak. Use a cloth to gently dry all surfaces. Keep the kayak and all accessories clean and dry.
3. Fold the kayak from front to back to remove additional air. You can also drain any remaining air using the high pressure hand pump by connecting the hose to the deflation port on the high-pressure hand pump.
4. Store in a cool, dry place and out of children's reach.

Repair

1. If there is a small puncture, repair it according to the instruction on repair patch.
2. If the hole is too big to be repaired with the provided patch, purchase a Bestway repair kit or send the boat to a speciality shop to make the repair.

Registration

If you need to register your boat, please have the boat Hull Identification Number and model name ready and then visit www.bestwaycorp.com to obtain your Certificate of Origin, or you can send e-mail to service@bestwaycorp.us for the Certificate of Origin.

The HIN is located on the starboard outboard side of the hull and near the stern.

PLEASE KEEP THIS MANUAL IN A SECURE PLACE, AND HAND IT OVER TO THE NEW OWNER WHEN YOU SELL THE CRAFT.

For support please visit us at:
www.bestwaycorp.com/support

©2017 Bestway Inflatables & Material Corp.

All rights reserved/Tous droits réservés / Todos los derechos reservados / Alle Rechte vorbehalten / Tutti i diritti riservati

®™ Trademarks used in some countries under license to/Marques ®™ utilisées dans certains pays sous la licence de /
 Marcas comerciales ®™ utilizadas en algunos países bajo la licencia de / ®™ Die Warenzeichen werden in einigen Ländern verwendet unter Lizenz der /
 ®™ Marchi utilizzati in alcuni paesi concessi in licenza a

Bestway Inflatables & Material Corp., No.3065 Cao An Road, Shanghai, 201812, China.

Manufactured, distributed and represented in the European Union by/Fabriqués, distribués et représentés dans l'Union Européenne par/

Fabricado, distribuido y representado en la Unión Europea por/Hergestellt, vertrieben und in der Europäischen Union vertreten von /

Prodotto, distribuito e rappresentato nell'Unione Europea da

Bestway (Europe) S.r.l., Via Resistenza, 5, 20098 San Giuliano Milanese (Milano), Italy

Distributed in North America by/Distribués en Amérique du Nord par/Distribuido en Norteamérica por

Bestway (USA) Inc., 3411 E. Harbour Drive, Phoenix, Arizona 85034, United States of America

Tel: 1-855-838-3888 (For U.S. and Canada)

Distributed in Latin America by/Distribués en Amérique latine par/Distribuido en Latinoamérica por/Distribuido na América Latina por

Bestway Central & South America Ltda, Salar Ascotan 1282, Parque Enea, Pudahuel, Santiago, Chile

Distributed in Australia & New Zealand by **Bestway Australia Pty Ltd, Unit 10/71-83 Asquith Street, Silverwater, NSW 2128, Australia**

www.bestwaycorp.com

Made in China / Fabriqué en Chine / Fabricado en China / Hergestellt in China / Prodotto in Cina

Bestway®