

9K & 12K BTU ROOFTOP AIR CONDITIONER AND AIR DISTRIBUTION BOX WITH LED AND REMOTE CONTROL (AU)

MODEL (LIPPERT PN)

FACTRCSM-PS (2021132281) FACTRCSM-PS-A (2023041404)

FACR09SM-PS_KIT-A(2023041405) FACR12SM-PS_KIT-A (2023041406)

TROUBLESHOOTING AND SERVICE MANUAL



* Picture shown here is for reference only.

This manual contains the product's basic information, safety, maintenance, replaceable parts, fault diagnosis and basic troubleshooting procedures.

TABLE OF CONTENTS

Introduction	2
Safety	2
Handling the device	3
Handling Electrical Cables	3
Maintenance	4
Cleaning of Filter Screen	4
Panel Surface Cleaning	4
Fan Motor	4
Replacable Parts List	5
Troubleshooting	6
Error Code of Display Board	7
Specifications	7
Circuit Diagram of Outdoor Unit and Panel	7

Introduction

This document provides an overview on replaceable parts for Furrion® 9K & 12K BTU Air Conditioner and Air Distribution Box with LED and Remote Control (AU), as well as basic troubleshooting and service information.

NOTE: Images used in this document are for reference only when assembling, installing and/or operating this product. Actual appearance of provided and/or purchased parts and assemblies may differ. For more detailed operation see Instruction Manual at <https://lci-support-doc.s3.amazonaws.com/Furrion/ccd-0005745.pdf> or scan this QR code:



Safety

Read and understand all instructions before installing or operating this product. Adhere to all safety labels. This manual provides general instructions. Many variables can change the circumstances of the instructions, i.e., the degree of difficulty, operation and ability of the individual performing the instructions. This manual cannot begin to plot out instructions for every possibility, but provides the general instructions, as necessary, for effectively interfacing with the device, product or system. Failure to correctly follow the provided instructions may result in death, serious personal injury, severe product and/or property damage, including voiding of the Lippert limited warranty.

WARNING

The "WARNING" symbol above is a sign that a procedure has a safety risk involved and may cause death or serious personal injury if not performed safely and within the parameters set forth in this manual.

WARNING

Failure to follow instructions provided in this manual may result in death, serious personal injury and/or severe product and property damage, including voiding of the component warranty.

CAUTION

The "CAUTION" symbol above is a sign that a safety risk is involved and may cause personal injury and/or product or property damage if not safely adhered to and within the parameters set forth in this manual.

⚠ CAUTION

Always wear eye protection when performing service, maintenance or installation procedures. Other safety equipment to consider would be hearing protection, gloves and possibly a full face shield, depending on the nature of the task.

Handling the device

⚠ WARNING

Installation and repair of the rooftop air conditioner must only be carried out by qualified personnel who are familiar with the risks involved and the relevant regulations. Inadequate repairs may cause serious hazards.

⚠ WARNING

Electrical devices are not toys. Keep electrical devices out of reach of children or elderly persons. Do not allow them to use electrical devices without supervision.

⚠ WARNING

Prevent inexperienced people from using the device without supervision.

⚠ WARNING

Do not undo the upper cover of the rooftop air conditioner in the event of a fire. Use approved extinguishing agents instead. Do not use water to extinguish fires.

⚠ CAUTION

The rooftop air conditioner must be installed securely so that it cannot fall down.

⚠ CAUTION

Only operate the rooftop air conditioner if you are certain that the housing and the cables are not damaged.

⚠ CAUTION

Do not use the rooftop air conditioner near flammable fluids or in closed rooms.

⚠ CAUTION

Make sure no combustible objects are stored or installed near the air outlet. A distance of at least 20" must be kept.

⚠ CAUTION

Do not reach into air outlets or insert any foreign objects into the device.

- Only use the device as intended.
- Do not make any alterations or conversions to the device.
- If faults occur in the refrigerant circuit, the system must be checked by a certified service technician and repaired properly. The refrigerant must never be released into the air.

Handling Electrical Cables

⚠ WARNING

The electrical power supply must only be connected by a qualified electrician.

⚠ CAUTION

Refer to NEC (National Electric Code) for proper sizing of wire gauge (awg) based on cable length and overcurrent protection rating that is supplying power to the air conditioner.

⚠ CAUTION

See rooftop unit nameplate for proper overcurrent protection sizing.

⚠ CAUTION

Attach and lay the cables so that they cannot be tripped over or damaged.

- Only a qualified electrician should connect the rooftop air conditioner to electrical power.
- Do not lay loose or bent cables next to electrically conductive materials.
- Do not pull on the cables.
- Use cable ducts to lay cables through walls with sharp edges.
- Refer to rooftop unit nameplate and NEC for proper power supply rating.

Maintenance

⚠ CAUTION

It is forbidden to operate the air conditioner without the filter screen, otherwise, the evaporator coil will be defiled and the service life of air conditioner will be affected.

Cleaning of Filter Screen

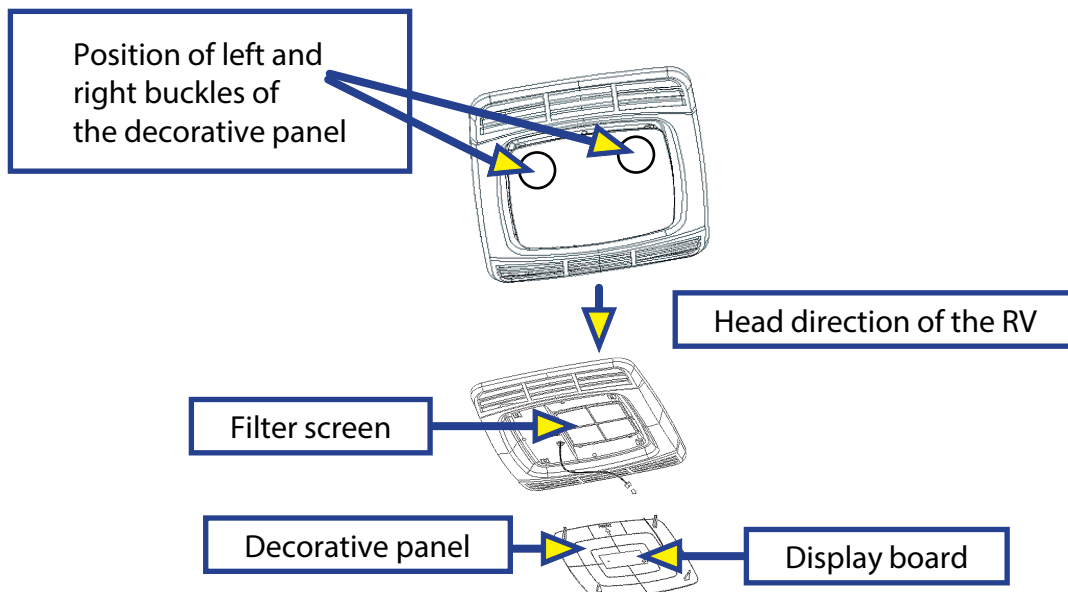
Position of left and right buckles of the decorative panel Regularly remove the filter screen behind the decorative panel inside the panel (press the left and right buckles of the decorative panel, and the decorative panel can be removed), flush it backwards with clear water, dry it and reinstall it.

Panel Surface Cleaning

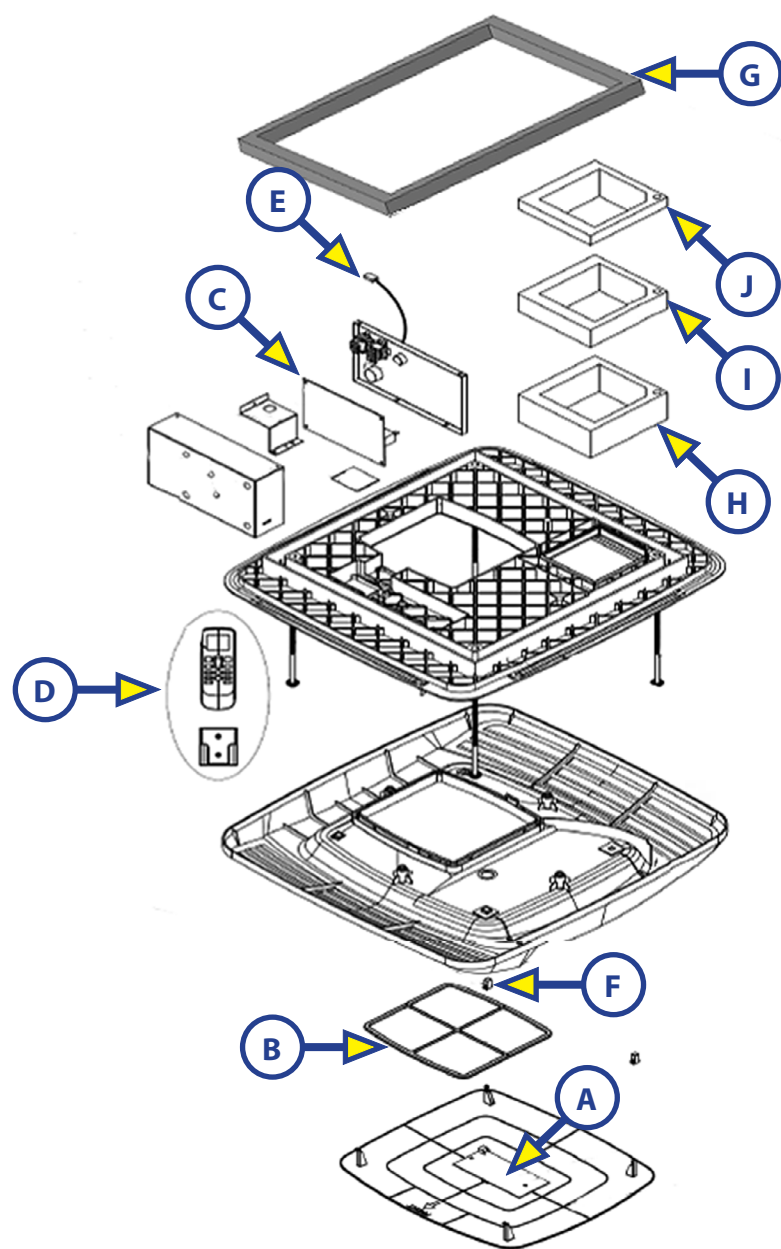
Clean the outer surface of the panel with soft cloth dipped in neutral detergent. Do not use polishing or cleaning powder.

Fan Motor

The fan motor has been lubricated before leaving the factory and does not need special maintenance.



Replaceable Parts List



Callout	Part #	Description	Model
A	2023009326	Display Board (IR Receiver PCB)	All
B	2023009327	Filter	All
C	2023009328	PCB	All
D	2023009310	Remote Control + Remote Control Bracket Kit	All
E	N/A Locally Sourced	Power Plug Pig Tail (J Series - Open End)	FACTRCSM-PS-A, FACR09SM-PS_KIT-A, FACR12SM-PS_KIT-A
F	2023042153	Push Latch	All
G	2024000057	400 X 400 Opening Adapter Gasket	All
H	2024025829	Airflue Foam Rubber 1	All
I	2024025830	Airflue Foam Rubber 2	All
J	2024025838	Airflue Foam Rubber	All

Troubleshooting

If the air conditioning equipment cannot work normally, please carry out inspection as follows to remove the faults:

- A. Check whether the fuse of air conditioning equipment or leakage circuit breaker of the RV is turned on; If the air conditioner is powered by a generator, please first confirm whether the generator power matches the air conditioner, whether the generator runs normally and generates electricity, and whether voltage output of the generator is stable.
- B. If the RV is connected to the mains supply, please make sure that the specification of power line matches the operating load of this product and that there is power supply. Check whether the mains voltage meets related requirements (the operating voltage of air conditioner is 220V);
 - I. Check whether the connecting wires of air conditioner are inserted in place and connected in good condition.
 - II. If the air conditioner still cannot work normally after the above inspection, please contact the factory for further help.

Trouble/ Symptom	Cause	Solution
Rooftop air conditioner constantly switches itself off	Freeze sensor has tripped.	Outer temperature is too low or all air nozzles are closed.
Not cooling well	The rooftop air conditioner is not set to cooling.	Set the rooftop air conditioner to cooling.
	The set temperature is too high.	Select a lower temperature.
	The evaporator fan is damaged.	Contact an authorized service agent or Furrion (see the detail contact info at the back page of this manual).
	The condenser fan is damaged.	Contact an authorized service agent or Furrion (see the detail contact info at the back page of this manual).
	The air intake grilles are blocked or obstructed.	Remove any leaves and other dirt from the ventilation grilles of the rooftop air conditioner.
	The blower is defective.	Contact an authorized service agent or Furrion (see the detail contact info at the back page of this manual).
Water enters the vehicle	The condensation water drainage openings are clogged up.	Clean the drainage openings for condensation water.
	The seals are damaged.	Contact an authorized service agent or Furrion (see the detail contact info at the back page of this manual).
Rooftop air conditioner does not switch on	No supply voltage connected.	Check the power supply.
	The voltage is too low.	Contact an authorized service agent or Furrion (see the detail contact info at the back page of this manual).
	Fuse blown or circuit protector tripped.	Check the electrical fuse of the power supply.

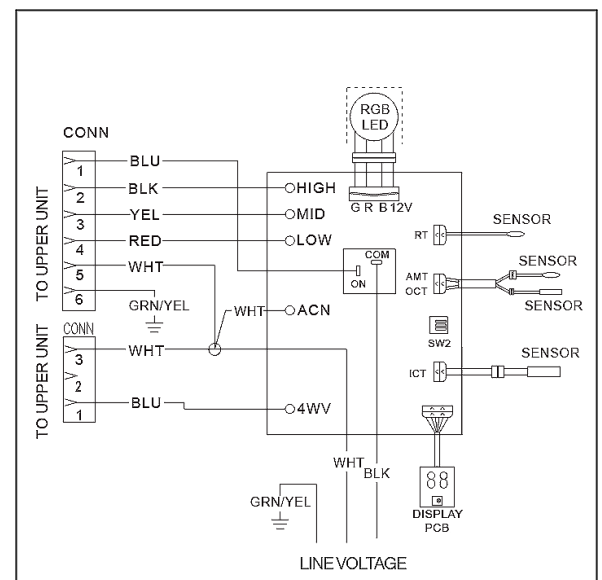
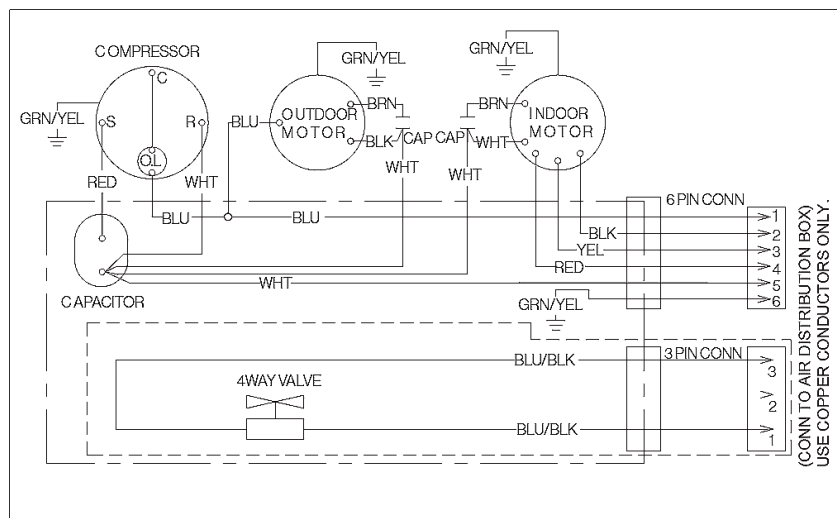
Error Code of Display Board

Code	Cause	Solution
E1	Fault of indoor temperature sensor	Check the sensor butt joint and replace the temperature sensing head.
E2	Fault of indoor coil temperature sensor	Check the sensor butt joint and replace the temperature sensing head.
E3	Fault of outdoor coil temperature sensor	Check the sensor butt joint and replace the temperature sensing head.
E4	Fault of outdoor ambient temperature sensor	Check the sensor butt joint and replace the temperature sensing head.

Specifications

	FACR09SM-PS	FACR12SM-PS
Rated cooling capacity	9000BTU	12000BTU
Rated heating capacity	9500BTU	12500BTU
Power supply	220-240 VAC/ 50Hz	
Compressor	Running current - 4.2A	Running current - 5.5A
	Locked -rotor current - 22.5A	Locked -rotor current - 28A
Rated cooling power	1000W	1300W
Rated heating power	800W	1060W
Air volume (high speed)	490m3/h	480m3/h
Refrigerant (R 410 A)	620g	740g
Cable standard	12AWG Copper wire with the length of no more than 8m	
Circuit protection	20A safety wire or fuse	

Circuit Diagram of Outdoor Unit and Panel





FURRION®

Furrion, LLC (Furrion) are wholly owned subsidiaries of Lippert Components, Inc. (Lippert)
Furrion, LLC (Furrion) sont des filiales en propriété exclusive de Lippert Components, Inc. (Lippert)
Furrion, LLC: 52567 Independence Ct., Elkhart, IN, 46514

Furrion Innovation Center & Institute of Technology
Centre d'innovation et institut de technologie Furrion
22244 Innovation Drive, Elkhart, IN 46514-5514, USA
Toll free/Numéro gratuit/Línea telefónica gratuita: 1-800-789-3341
Email/Courriel/Correo electrónico: support@furrion.com

©2007-2025 Furrion, LLC. All rights reserved.

©2007-2025 Furrion, LLC. Tous droits réservés.

For Patent Info: www.Lippert.com/patents

Pour des informations sur les brevets: www.Lippert.com/patents

FURRION.COM



The contents of this manual are proprietary and copyright protected by Lippert. Lippert prohibits the copying or dissemination of portions of this manual unless prior written consent from an authorized Lippert representative has been provided.

Any unauthorized use shall void any applicable warranty.

The information contained in this manual is subject to change without notice and at the sole discretion of Lippert. Revised editions are available for free download from lippert.com.

Please recycle all obsolete materials.

Les renseignements contenus dans le présent manuel peuvent seulement être distribués sous forme de document complet, à moins de recevoir l'approbation explicite de Lippert Components pour distribuer des parties individuelles. Tous les renseignements contenus dans le présent manuel peuvent être modifiés sans préavis. Les éditions révisées pourront être téléchargées gratuitement sur le site lci1.com. Ces renseignements sont considérés comme étant factuels jusqu'à ce qu'une version révisée les rende désuets.

Veuillez recycler tout le matériel désuet.

For all concerns or questions, please contact Lippert.

Communiquer avec Lippert Components si vous avez des questions ou des préoccupations.

Ph: 432-LIPPERT (432-547-7378) | Web: lippert.com | Email: customerservice@lci1.com