

Full Length Mirror 3Installation Options



1.Wall mounted






2.Paste installation



3.Leaning on the wall

Installation Instruction	
Before Installation	<div>*Please make sure that the installed wall is a load bearing wall.</div> <div>*Please be aware of the wires and water pipes while drilling</div>

Product and accessories			
3M adhesive strip*8	 Glue*1	 Non-slip Mat*4	 Screw*2 Expansion screw*2

1.Wall mounted

Tools Needs(not included in the package)



Pencil



Electric Drill



Hammer



Tapeline

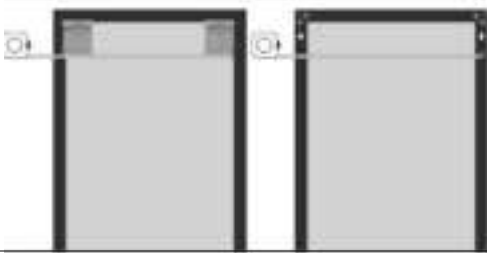


Level Ruler



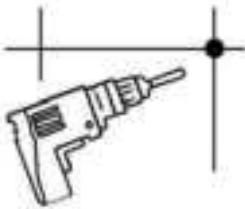
Screwdriver

1.



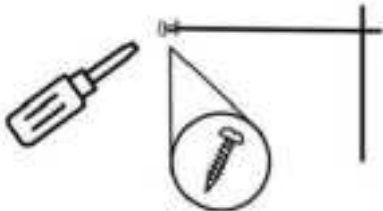
1.Measure the distance between the two hooks and mark the points on the wall

2.



2.Drill holes at the marking points with an electric drill

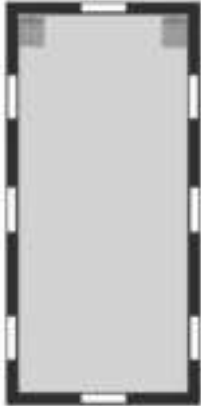
3.



3.Insert the plastic expansion tube into the wall with hammer then screw into the expansion tube. Rememberto leave 5mm distance from the wall.

2.Paste installation

1.



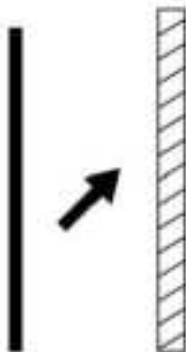
1.Stick83M rubber strips on the back of the frame respectively.

2.



2.Apply structural adhesive to the back of the frame and tear off the back of the adhesive tape.

3.

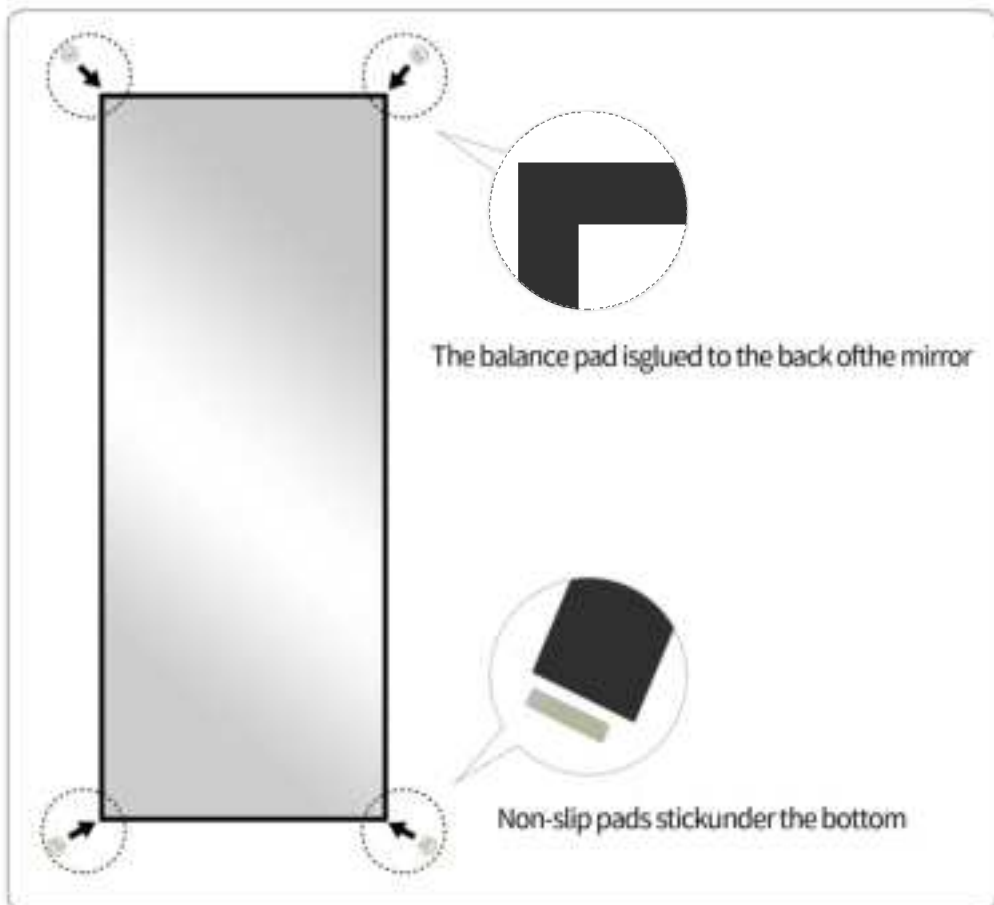


3.Stick the mirror on the wall.

Note:the wall should be smooth and flat when pasting(wall covering /wallpaper,wet/dusty wall can't be pasted).

3. Leaning on the wall

Put two non-slip pads on the bottom, two non-slip pads on the back of the mirror, put the bracket away and lean against the wall.



The mirror can be used when it is put away and tilted against the wall