



# Q1 Hummer User Manual



Copyright© Qiewa Industrial Co., Ltd

All Right Reserved



**Qiewa**



# Safety Precaution

- Do not place battery near fire, flammable, explosive, or corrosive objects.
- Do not disassemble battery or charger, any damage caused by such actions are not eligible for warranty.
- Do not short the circuit with wires or fuses.
- Do not drop or throw battery and charger.
- Please store battery in dry, ventilated environment.
- Do not cover battery or charger with other objects to prevent overheating.
- Keep battery and charger away from young children.
- Do not carry charger while riding, any damage caused by user's mistake will void warranty.



# Battery Usage

- **Avoid sharp or uneven surfaces such as railroads and stairs.**
- **Please double check all structures and brake system before riding.**
- **Do not temp to service or modify any part.**
- **Do not overload or hang object on handle bar.**
- **Please wear rain coat if riding in rain, do not ride while holding umbrella.**
- **Please wear protection gears at all time and obey all local traffic laws.**





# Battery Usage

- **Keep Battery charged if possible, or it may shorten battery life.**
- **Recharge the battery at least once per month if not in use.**
- **Replace the battery if any damage found on exterior of the battery or wire.**
- **Park at cool area and avoid direct sunlight in hot seasons, keep battery in 5 - 30°C environment.**
- **Do not overcharge the battery.**
- **Do not recharge while using.**



# How to Recharge

- Do not charge continuously more than 18 hours.
- Please remove power plug from power source first, then remove the charge plug from the battery.
- Red light indicates power connection; green light indicates recharge completed.



# Remote Controller

- **Lock:** Lock mode, vehicle cannot be started.
- **Unlock:** Unlock mode, vehicle cannot be started.
- **Lightning:** After alarm deactivated, press twice to trigger siren sound, now the vehicle is ready to be started.
- **Siren:** Activate alarm.



# Product Structure



# Electronic Instrument Gauge

- Press and hold  to turn off.
- While turned off, press  once to turn on, press again to switch data review.

ODO = Total travelled mileage

Trip = Single trip mileage.

RM = Remaining mileage

TM = Current Time

ERRO = Error / Malfunction

- Press +/- to adjust travel speed

Gears: 1<sup>st</sup> gear is slowest, 3<sup>rd</sup> gear to be traveled at highest speed.



# Electronic Instrument Gauge

- Press and hold + and – to enter setting mode, press  to change setting

PO1: Background lighting: higher the number the brighter. (Def. 2)

PO2: Unit: 0 for km, 1 for mile

PO3: Voltage level: 24v,36v,48v.(Def.48v)

PO4:Gauge Stand by time: 0 means always on,  
can be set 1 to 60 min. (Def. 5 min)

PO6: Wheel Size: Def 0011.0, do not change this setting.

PO7: Speed Calibration: Def.00024, do not change this setting.

PO9: 0 = Accelerator starts , 1 = Slide start(Def. 0)

P14: Remote Control Current Limit: 1-20A, Def. 12, do not change this setting.

P15: Speed Limit: Set 0 – 100km/h, Def. 60km/h

P16: Cruise Control: 0 to shut off, 1 to activate. Def. 1.

■ **WARNING:** Suggest NOT to change any of above settings, any damages caused by altering setting references are not eligible for warranty.

# Specifications

## ● Specification

【Dimension】 113\*61\*121cm

【Wheel Base】 93cm

【Weight】 25kg

【Max Load】 200kg

【Battery】 Lithium Battery

【Voltage】 48v

【Output】 800w

【Tire Size】 10”

【Tire Type】 Inflatable

【Handle Bar】 Quick Release

【Chassis】 Quick Release

【Max Speed】 55km/h

【Suspension】 F&R

【Range】 100km

(Range may vary by load.)

## ● Safety

【Headlight】 O

【Chassis Lamp】 O

【Remote】 O

【Brake Light】 O

【Aluminum】 O

【Seat】 Removable

【Brakes】 Disk

## ● Charger

【Power】 48v3a

【Recharge Time】 12Hr

# Chassis Folding / Unfolding

**Step1**

Push quick release outwards



**Step2**

Fold down handle bar



**Step3**

Pull down safety release



**Step4**

Pull to fold down





# Seat Installation

**Step1**

**Fold lock handle outwards**



**Step2**

**Fold down the seat**



**Step3**

**Pull up the lock handle**



**Step4**

**Fold seats forwards**





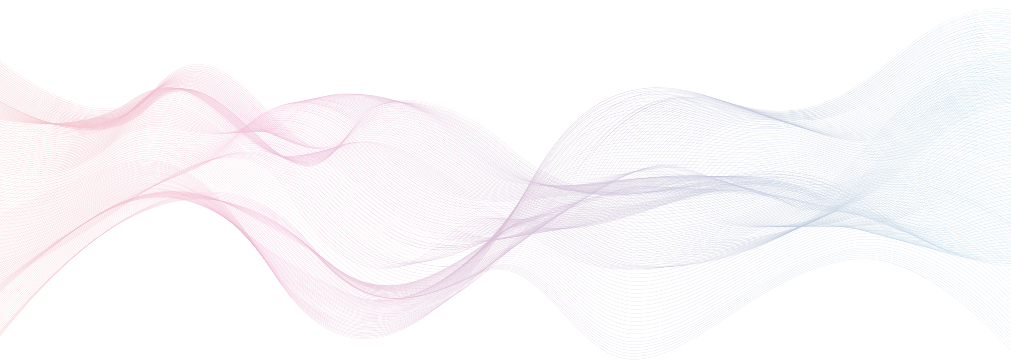
# Trouble Shooting

- **ERRO 1 : Electrical error**
- **ERRO 2 : Throttle error**
- **ERRO 3 : Controller error**
- **ERRO 4 : Brake malfunction**
- **ERRO 5 : Low voltage protection**
- **ERRO 6 : Communication fail, gauge fail to receive input from remote.**
- **ERRO 7 : Communication fail, remote fail to receive output from gauge.**
- **It is normal and do not worry if ERRO flashes on gauge while braking.**



# Support

Malfunction	Reason	How to fix
Gauge shows no power	1.Battery too low	Replace switch unit
	2.Broken fuse	Fully charge the battery
Gauge shows enough power but cannot start	1.Battery false wiring	Reconnect firmly
	2.Damaged wires	Send to distributor for service
	3.Handle bar false wiring	Send to distributor for service
Range too short	1.Low tire pressure	inflate the tires
	2.Damaged battery	Replace the battery
	3.Low charge or damaged charger	Fully charge the battery or replace the charger
	4.Uphill, against wind, or overweight loads	Suggest to assist with man-power
Not charging	1.Charger plug misconduct	Clean conduct points.
	2.Damaged charger	Replace charger
	3.Damaged Battery	Replace battery
	4.False wiring	Replace fuse
Others	1.If above trouble shooting does not solve issue	Please contact distributor or manufacturer
	2.Damaged controller, battery, or charger	Temp to disassemble and fix may void warranty



Visit us at  
[QiewaScooter.com](http://QiewaScooter.com)  
for any questions about  
your scooter.