



*In the box you will find:*

### In the box you will find:

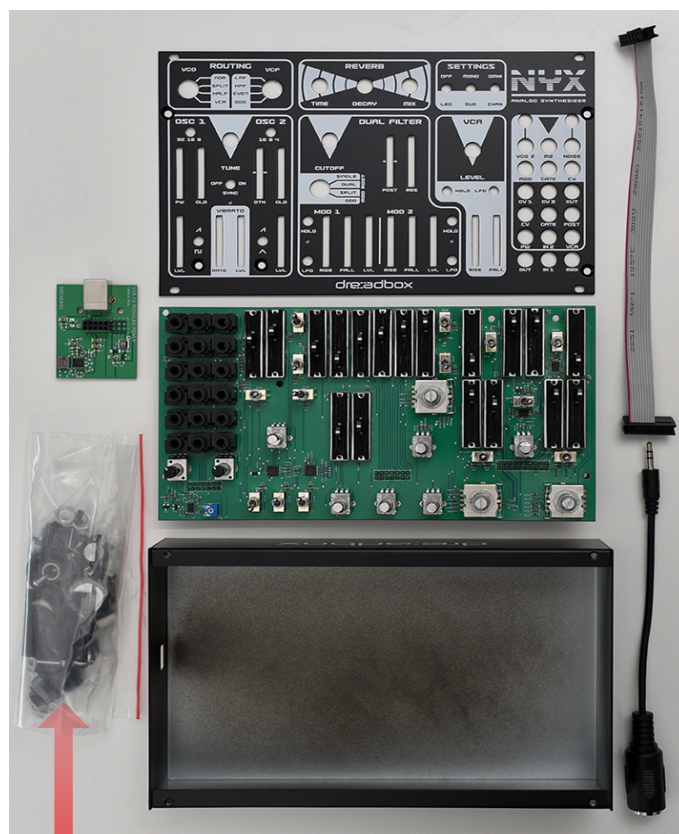
- 3x PCB boards
- A plastic bag with the parts
- The metal enclosure with the panel
- Midi to 3,5mm adapter
- 1 ribbon cable for modular use

### Bag contains:

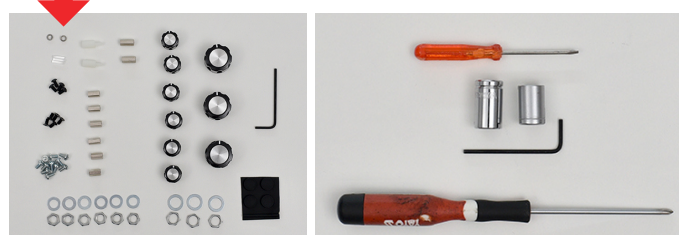
- 4x rubber feet
- 1x 2mm Allen key
- 11x M3 brass screws
- 4x M3 black screws for panel mounting
- 5x M3 black screws countersunk type
- 2x metal spacers 12mm long M3
- 6x metal spacers 10mm long M3
- 2x plastic spacers 11mm long M3 double ended
- 6x M8 nuts and washers
- 3x M10 nuts and washers
- 1x M3 washer
- 6x small knob
- 3x big knob
- 3x LED lens

### Additionally, you will need to have:

- A flat 1,5mm wide screwdriver for the knobs
- A PH1 screwdriver
- A 10mm Allen key
- A 11mm Allen key

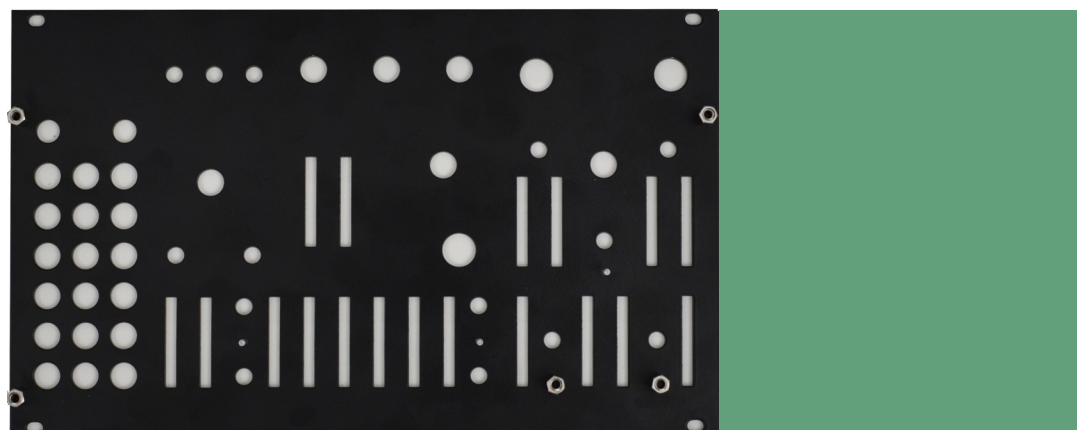
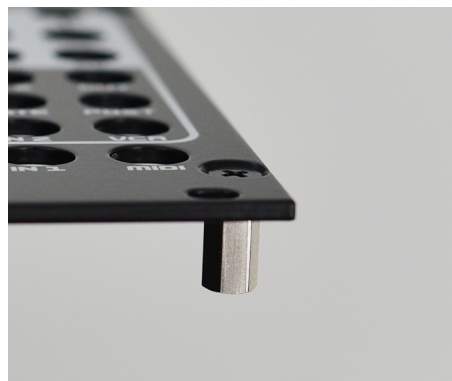
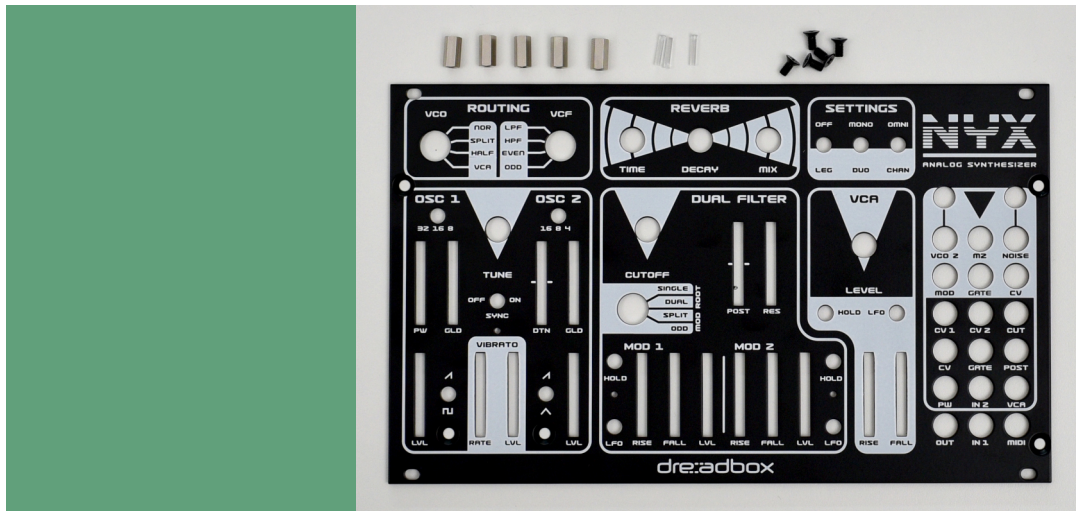


*Bag contains:*



## Step 1

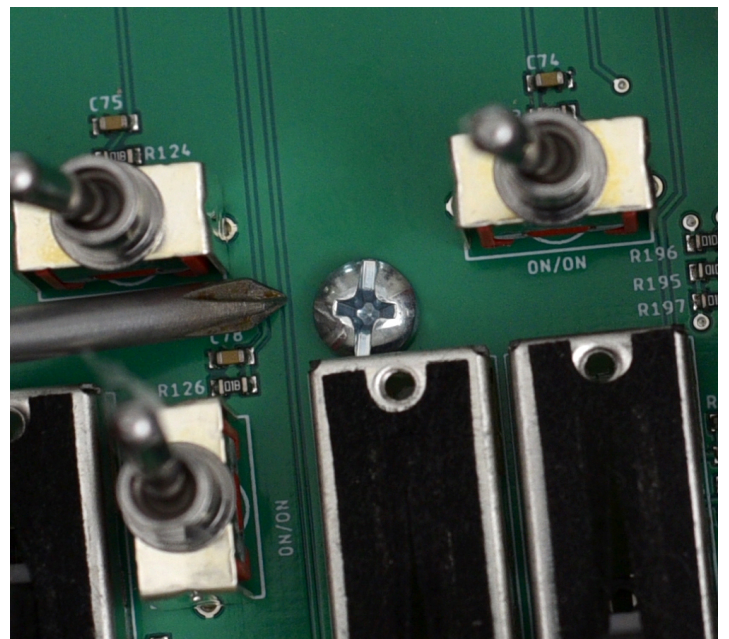
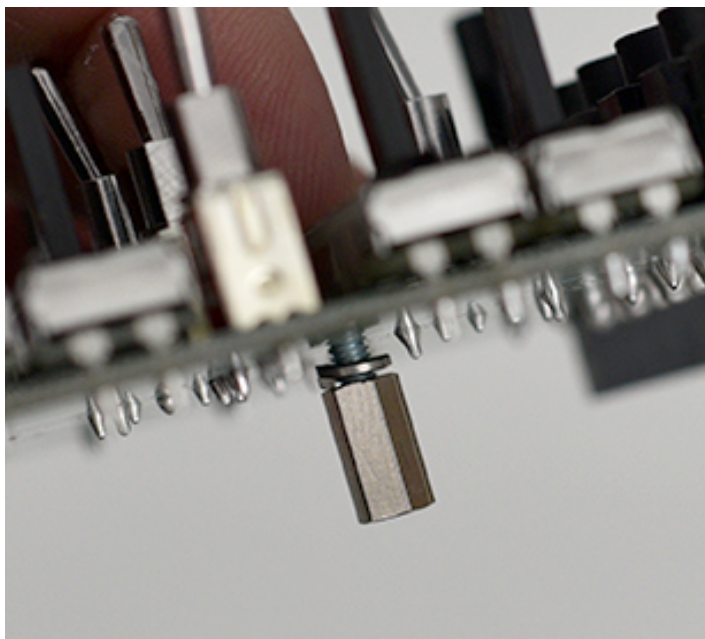
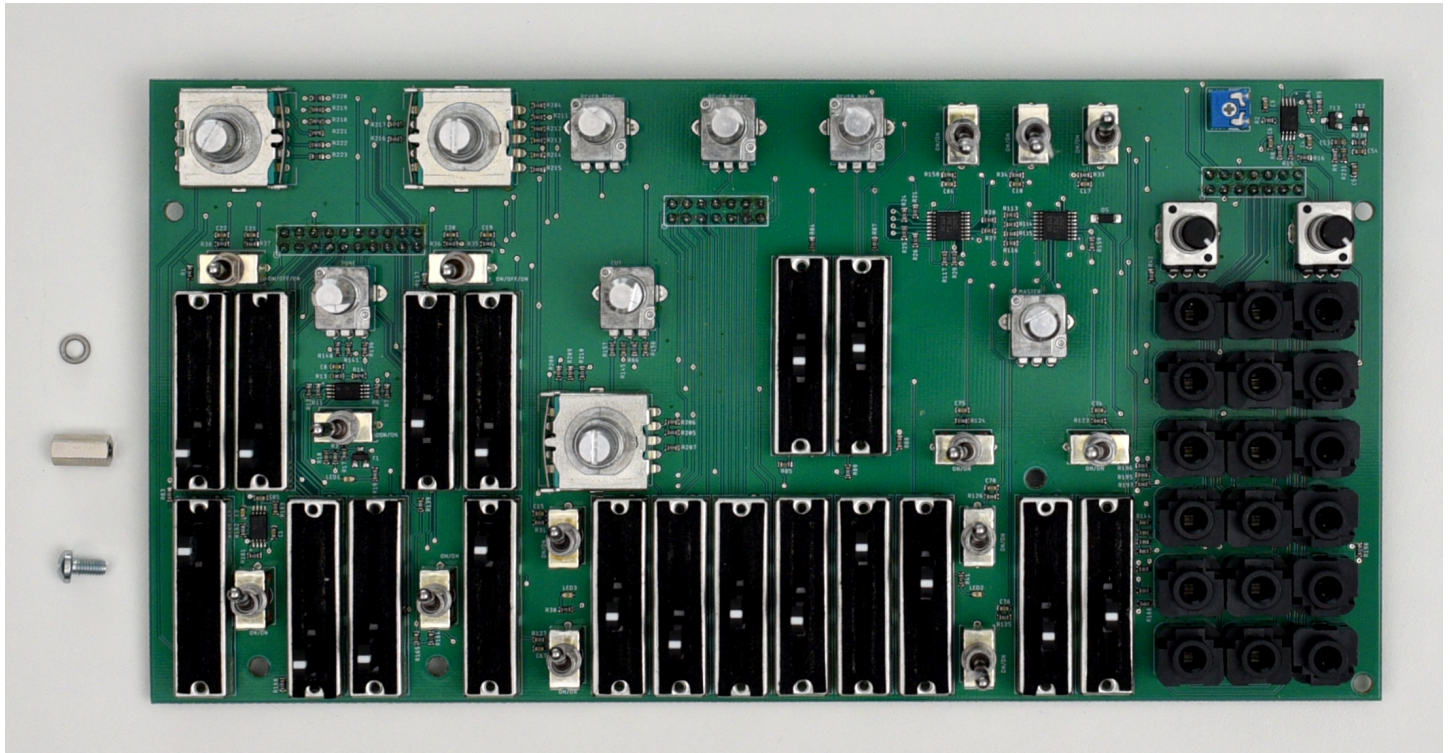
On the front panel add the LED lens and push them with the soft end of the screwdriver so that they stick firmly in place. Then add 5x10mm metal spacers with 5xM3 black screws as shown.





## Step 2

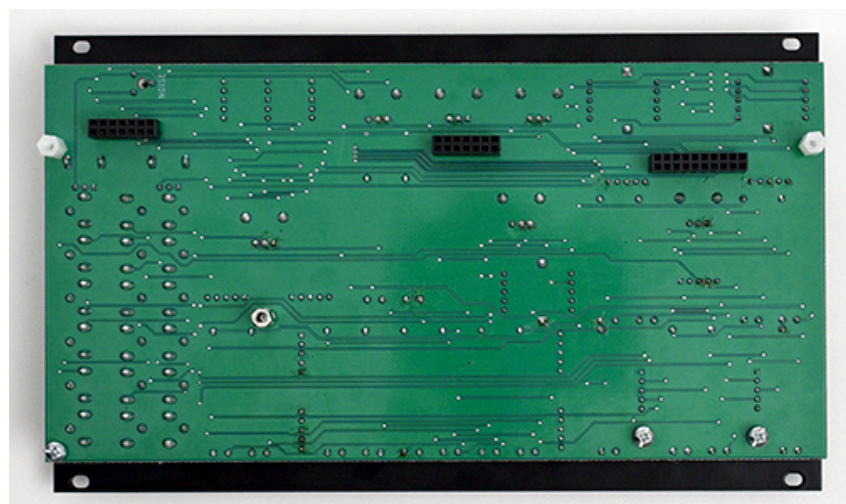
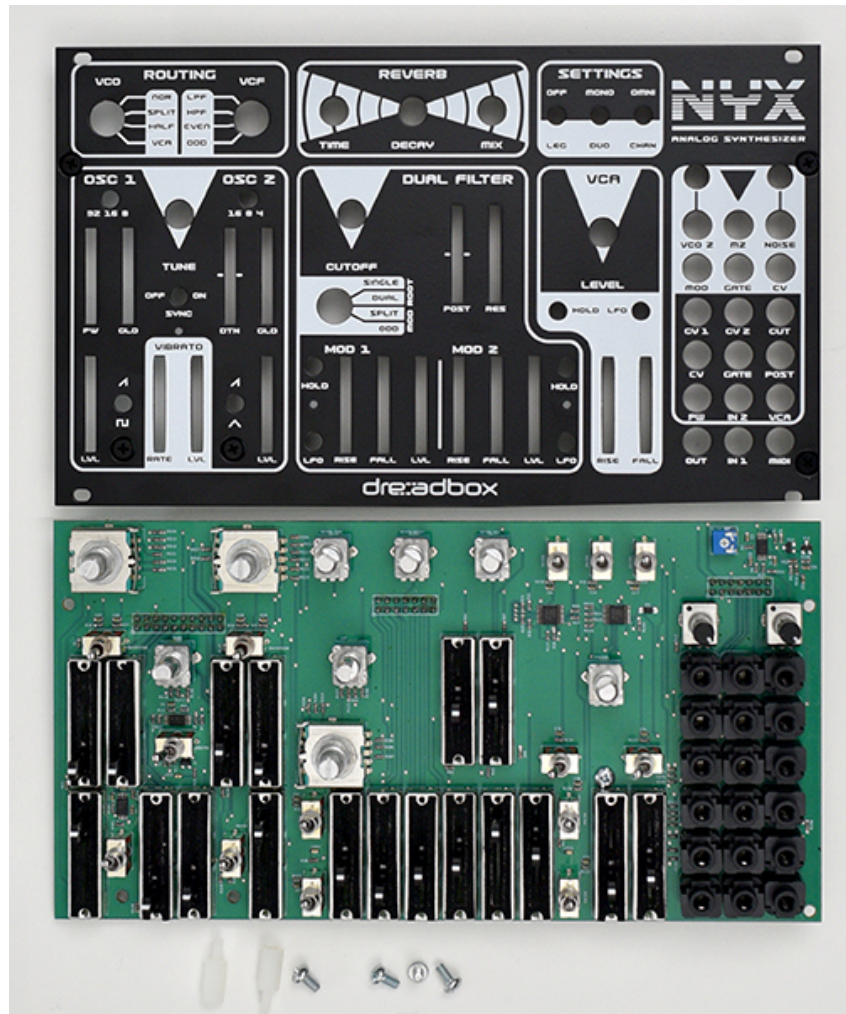
On the top PCB above the 2nd slider to the right as shown in the picture, add an M3 brass screw through the front side and secure it with the M3 washer + a 10mm metal spacer from the bottom side. Make sure the screw is tight enough to straighten the washer.





### Step 3

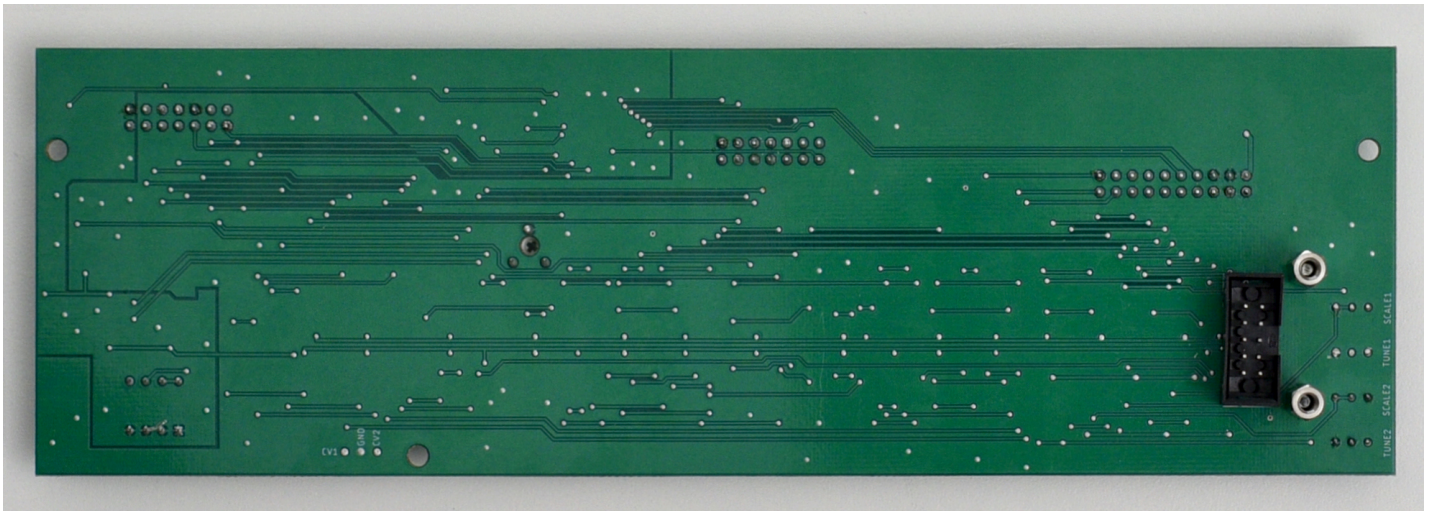
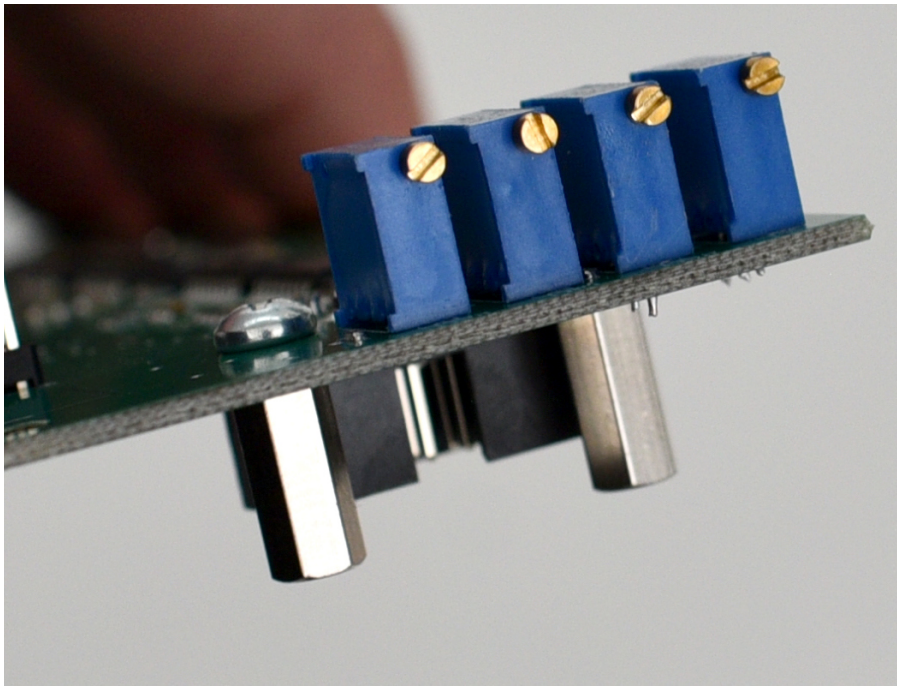
Insert the top PCB to the panel as shown, it needs some pressure and alignment of the switches. You will need 2x11mm long M3 plastic spacers to be screwed into the 2 top corner holes and 3xM3 brass screws to be screwed into the 3 bottom holes. All from the underside of the top PCB to attach the panel to the top PCB as shown.





## Step 4

On the bottom PCB, screw the 2x12mm metal spacers with 2xM3 brass screws as shown (they will serve as the power supply base).





## Step 5

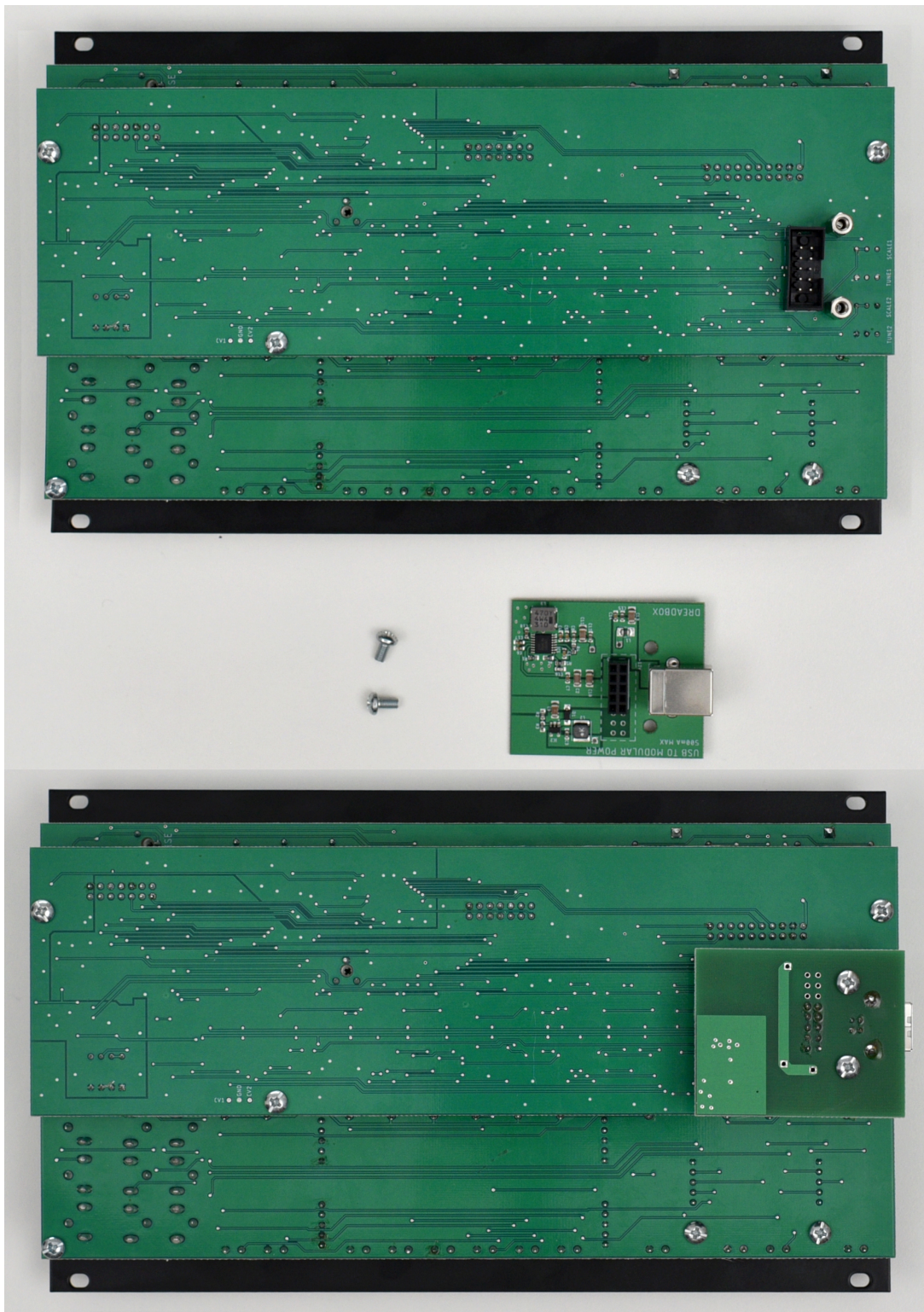
Connect the bottom PCB to the top PCB and fix them with 3xM3 brass screws as shown.





## Step 6

Attach the power board to the assembly as shown and secure with 2xM3 brass screws.





## Step 7

Add the adhesive feet to the enclosure.





## Step 8

Place the unit in the metal enclosure. To easily achieve this, place the unit with the USB side first, and then push down the rest.





## Step 9

Screw the 4xM3 black screws so that its held to the enclosure as shown.





## Step 10

Screw in the pots and rotary switches, taking care that the rotary switches should not be over-tightened but not too loose. The M10 nuts are for the rotary switches and the M8 for the pots.





## Step 11

Screw the knobs to the pots and rotary switches as shown.



Congratulations! Enjoy your new synth unit!