

WE APPRECIATE FEEDBACK!

Please allow our customer service team to help  
with any issues before you leave a review.



/atomismartino



/atomi\_smart



@atomi.smart



# Qi Wireless Alarm Clock

Detachable Alarm Clock with Built-in  
Apple Watch Charger + 15W Qi Charge Pad

## User Manual

Need assistance?

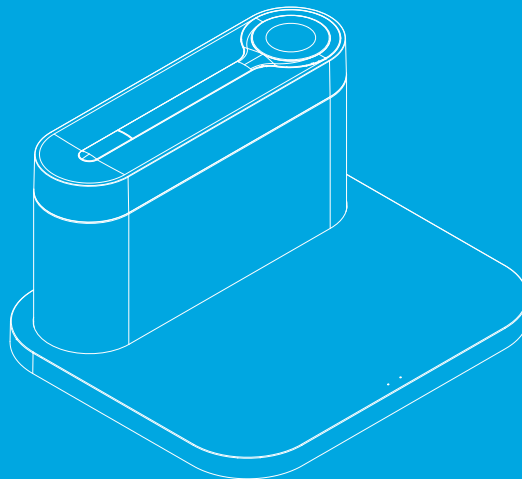


DO NOT RETURN THIS  
PRODUCT TO THE STORE

Call 1-800-757-1440

Mon-Fri 9:00 a.m. - 5:00 p.m. EST (US)

or email us at [info@atomiusa.com](mailto:info@atomiusa.com)



Date Code: 09/22

## Thank you for purchasing the Atomi Qi Wireless Alarm Clock

Power all your devices, uninterrupted, while you sleep. This Qi Alarm Clock will ensure you, your smartphone, and Apple Watch are recharged and ready to go every morning! Its detachable feature makes it a must-have for over-nights away from home. The bright LED display, snooze and night-light features, plus other settings make it a breeze to operate even if you're half asleep!

To use the fast charging feature, use a 20W USB-A charger adapter.

NOTE: USB-A Wall Charger not included.

When using wireless charging, please connect a charge adapter.

## What's Inside

Qi Wireless Alarm Clock

## Specifications

Battery capacity: 3.7V, 1200mAh

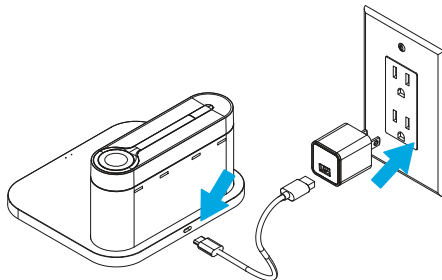
Type-C Input: DC 5V/3A, 9V/2A, 12V/1.5A

Wireless Output: 15W

## Charging Your Devices

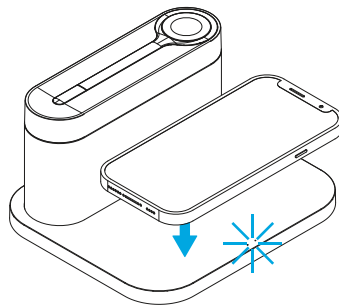
1

Plug the Qi Wireless Alarm Clock into any nearby outlet.



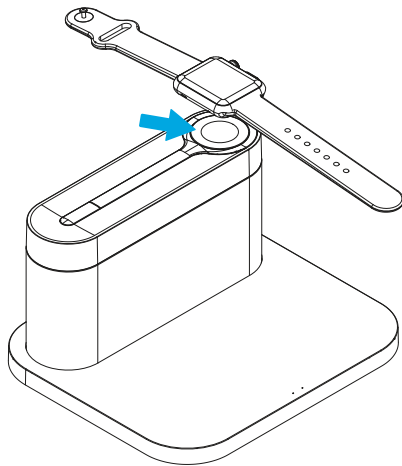
2

To charge your smartphone, place the device on the designated charging base. Charging will begin on contact, and the indicator light will turn on.



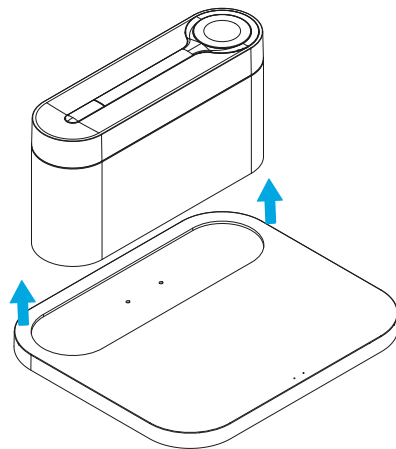
3

To charge your Apple Watch, place the device on the designated area atop the Qi Wireless Alarm Clock.



## Detaching your Alarm Clock

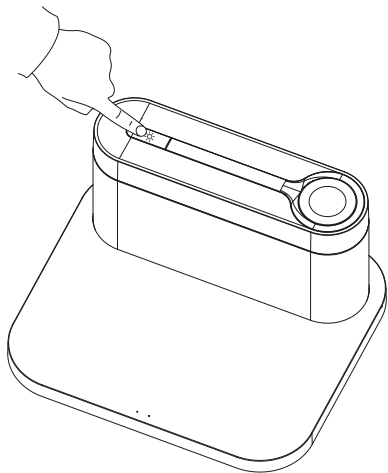
The magnetic Alarm Clock easily pulls away from its base, allowing you to bring it anywhere you go. It can also be attached to any flat desktop magnetic surface.



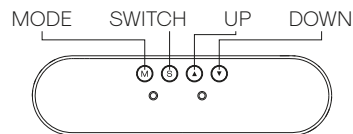
## Night Light Function

Press the top area of the Alarm Clock to change the light between Warm, Cool, Neutral and Off.

While the light is on, long press to adjust the light brightness.



## Clock Button Function



- (M) MODE**  
Short press **(M)** to cycle between: Clock Setting -> 12/24 Hour Format -> Alarm Setting -> Year -> Month/-Day -> Clock Display  
Long press **(M)** -> Return to clock display mode
- (S) SWITCH**  
In clock display mode, short press **(S)** to cycle between -> View Current Hour Format -> View Alarm -> View Year -> View Month/Day -> Clock Display  
When setting the clock, hour format, alarm or month/-day, short press **S** to switch between hour/minute, 12/24h and month/day
- (▲) UP**  
When the alarm is not ringing, short press **(▲)** -> Adjust the brightness of the clock screen  
When the alarm is ringing, short press **(▲)** -> Snooze (5 minutes)  
When the alarm is ringing, press and hold **(▲)** for 3 seconds -> Stop the alarm  
When setting the clock or alarm, short press **(▲)** -> Increase hours/minutes

## ▼ DOWN

Short press ▼ -> Adjust the volume of the alarm

Long press ▼ -> Enable/Disable the alarm

When setting the clock or alarm, short press ▼ -> Decrease hours/minutes

## Additional Commands

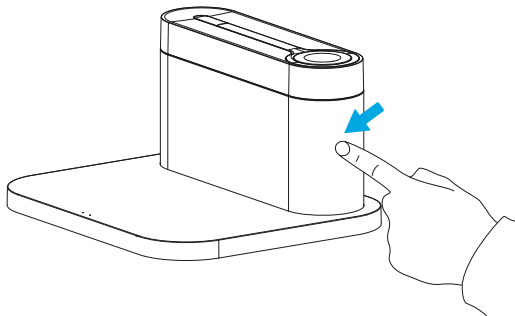
### Clock Screen Brightness

When the alarm is not ringing, touch the side to adjust the brightness of the clock screen

### Snooze/Stop Alarm

When the alarm is ringing, quickly touch the side to snooze (5 minutes), or touch and hold for 3 seconds to stop the alarm for the day.

Note: The alarm will still be enabled for the following days.



## Safety Information

1. Read these instructions carefully for best use.
2. DO NOT use the Qi Wireless Alarm Clock near water or expose it to rain or moisture.
3. DO NOT use the Qi Wireless Alarm Clock near open flames, such as candles, heat sources, radiators and stoves.
4. Only clean the Qi Wireless Alarm Clock with a dry cloth.
5. Caution: Risk of electric shock. Grounding continuity must be maintained.
6. For connection to a power supply not in the U.S.A., use an attachment plug adapter of the proper configuration for the power outlet, if needed.
7. Please check prior use, if output voltage and current of the power supply is suitable for the product.
8. Children should be supervised to ensure that they do not play with the appliance.

For questions or concerns, email us at [info@atomiusa.com](mailto:info@atomiusa.com)  
Manufactured and marketed by Atomi Inc.  
10 West 33rd St., New York, NY 10001  
atomium™ is a trademark of Atomi Inc.  
Designed by Atomi in New York. Made in China

One-year limited warranty from the date of purchase  
against defects in material and workmanship.