

Service Bulletin

no. 22, 2019-04-03

Installing a new magnetic valve on a Deckma OMD-24 unit

System applicability: Marinfloc Oily Water Separators and Marinfloc WhiteBoxes supplied with the Deckma OMD-24 oil content monitor

Background

According to instructions from Deckma, it is not allowed to open the magnetic valve, not even for cleaning purposes. It is only allowed to replace the valve with a new one. The two sealed screws should never be opened. Some valve distributed are missing the sticker on the bottom of the valve, but the screws are sealed with the red paint, see pictures below.



Magnetic valve for the measuring cell



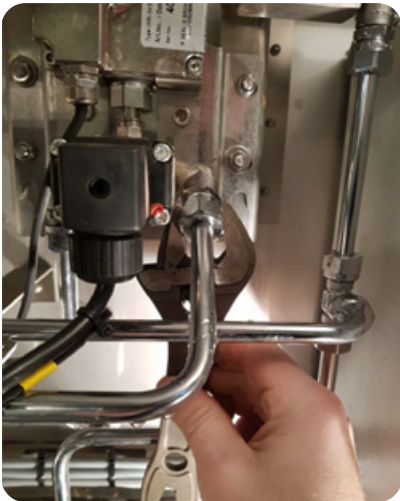
Replacing the magnetic valve for the measuring cell

Tools needed for replacing the valve:

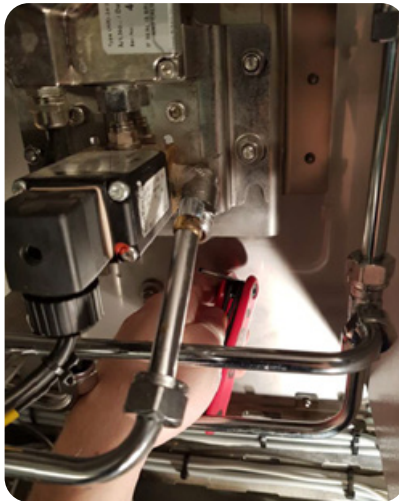
- Screwdriver for electrical contact
- Spanner
- Allen key
- Thread tape

Replacement instructions

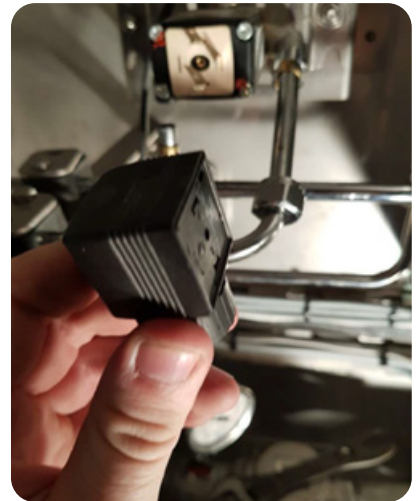
1. Disconnect the pipe fittings on the magnetic valve with a spanner, see picture no. 1.
2. Disconnect the valve body from the measuring cell support with an Allen-key (four screws on the rear side of the measuring cell support), see picture no. 2.
3. Disconnect the electric connection with a screwdriver, see picture no. 3.



Picture 1.



Picture 2.



Picture 3.

4. Disconnect the magnetic valve from the measuring cell, see picture no. 4.
5. Move the pipe couplings from the old magnetic valve to the new valve. Use thread tape on the pipe couplings, see picture no. 5.



Picture 4.

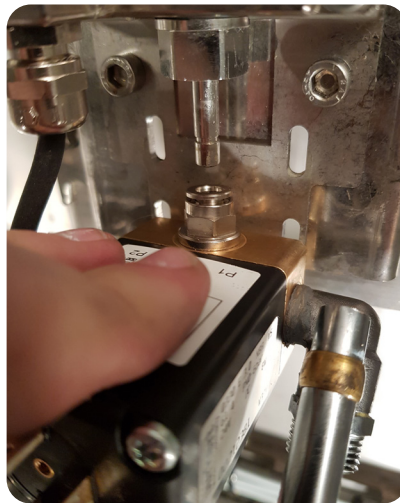


Picture 5.

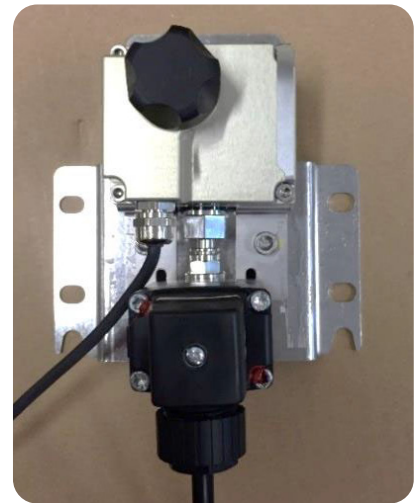
6. Position the valve correctly so that the valve fits on the screw holes. The connector of the valve must be correctly positioned in the connector of the measuring cell.
7. Re-connect the new valve body to the measuring cell support with the four Allen screws.
8. Re-connect the pipe fittings on the magnetic valve with a spanner.
9. Re-connect the electrical connection with a screwdriver. Make sure the rubber bracket is in place to keep the IP rating.



Picture 6.



Picture 7.



Picture 8.

Make a successful function test of the Marinfloc equipment according to the Marinfloc manual and make sure the magnetic valve is working correctly on the Deckma OMD-24 Oil content meter. Also make sure the pipe fittings aren't leaking on the magnetic valve.

All previous service bulletins and other important information, e.g. updated lists of approved chemicals and flocculants, can be found on our website www.marinfloc.com